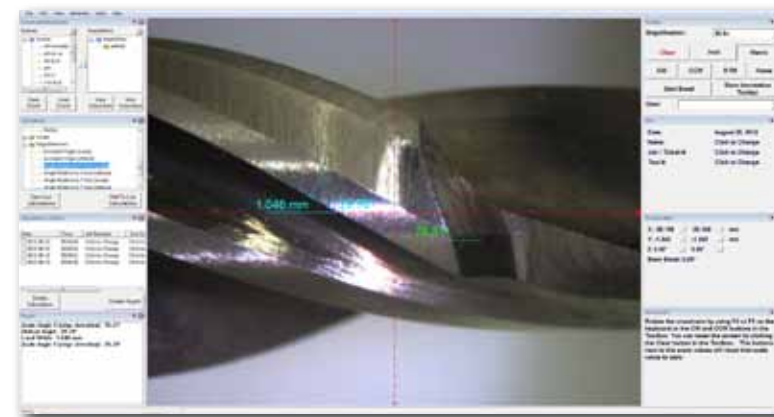
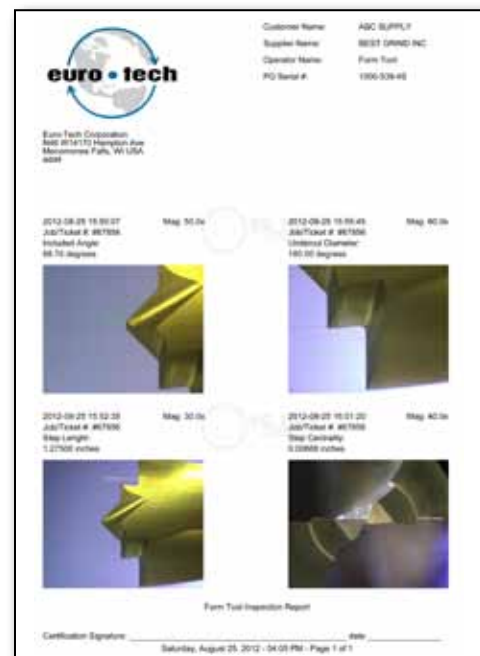
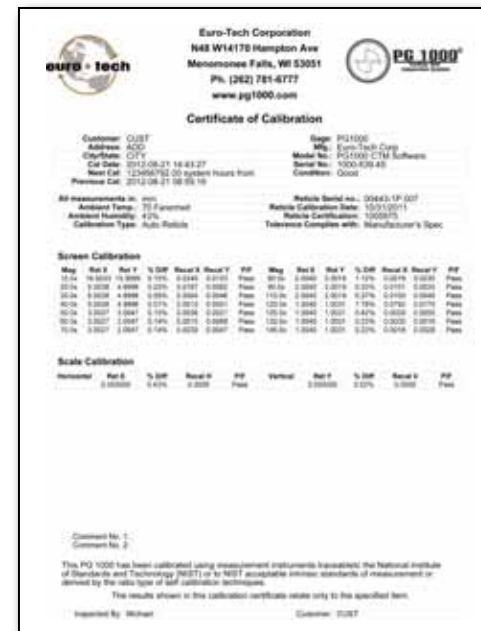


tool inspection  
report

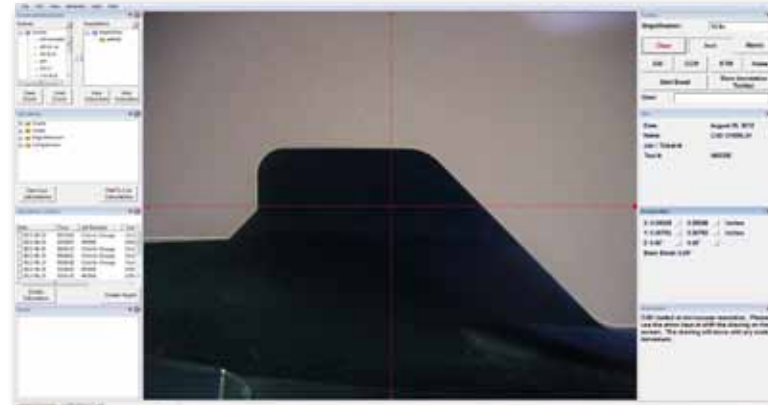


tool inspection  
using edge  
detection



gauge calibration  
report

dxr file overlay



## 400-Advanced REACTION<sup>1</sup> SYSTEM

### HARDWARE SPECIFICATIONS:

Microscope: \*00484-1A 12X optical system  
Magnification: 12.5x, 20x, 30x, 40x, 50x, 60x, 70x, 80x, 90x, 110x, 120x, 125x, 130x, and 145x, 212.5x  
Field of View: 12.5x = 25 mm, 20x = 16.7 mm, 30x = 11.6 mm, 40x = 8 mm, 50x = 6.6 mm, 60x = 5.4 mm, 70x = 4.55 mm, 80x = 4.0 mm, 90x = 3.5 mm, 110 = 3.0 mm, 120x = 2.8 mm, 125X = 2.6 mm, 130x = 2.5 mm, 145x = 2.3 mm  
Camera: \*1.3 mega pixel 1/2" format USB CCD color camera  
Computer: \*Dell mini-tower or desk top, i3 or higher quad core processor 3 GB RAM 250 GB hard drive. Digital DVI video interface  
Monitor: 20" to 22" Flat panel wide screen

Operating System: \*Windows 7, 32 or 64 bit  
Scales: \*Fagor  
Light: Variable Intensity LED work light  
Language: <sup>3</sup>English  
Software: All software documentation is electronic and available for download from the PG1000 web site [www.pg1000.com](http://www.pg1000.com)  
Screen Resolutions: Low = .020 mm (.00078")  
High = .0017 mm (.00012")  
Repeatability: .005 mm (.0002")  
Warranty: 1 year on all parts supplied by Euro-Tech at the time of purchase as an upgrade or full system  
General Information: Dimensions: 24" wide x 19" deep x 18" high  
Weight: 140 lbs  
Power: 110 volts default; 220 optional

\*Euro Tech reserves the right to change microscope, digital readout, scale manufacturers and camera Manufacturers, computer manufacturers, operating systems and computer components as needed

<sup>1</sup>REALtime Cutting Tool Inspection

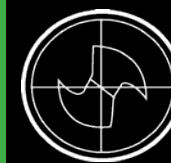
<sup>2</sup>Optional magnifications available at the time of order

<sup>3</sup>Additional operating system languages to be available after introduction of REACTION Software

Euro-Tech Corporation • N48 W14170 Hampton Ave. • Menomonee Falls, WI 53051 • PH: 262.781.6777 • FAX: 262.781.2822



## PG 1000 Cutting Tool Inspection Systems



**PG 1000**  
Cutting Tool  
Inspection System

for more information visit  
[www.pg1000.com](http://www.pg1000.com)  
[www.eurotechcorp.com](http://www.eurotechcorp.com)  
or email  
[pg1000@eurotechcorp.com](mailto:pg1000@eurotechcorp.com)

Package Includes Hardware,  
Software & Computer

## 400-Advanced REACTION<sup>1</sup> SYSTEM

### COMPARE THE FEATURES:

- Advanced **REACTION<sup>1</sup>** Software
- 1.3 Mega Pixel USB CCD camera
- Low light imaging requires minimum light and reduces hot spots
- 12x Microscope, magnifications from 12.5X to 145X
- Do multiple screen scale, edge detection and comparisons in different colors over a single image
- Magnifications automatically synchronized to PC
- Base block and focus encoder
- Focus indication
- User Macros
- CAD overlay software synchronized to scale movement
- Automatic screen calibration with magnification change stabilization
- Segmented scale calibration
- Euro-Tech PGEB6 6 Channel USB Encoder Interface
- Free upgrade software downloads as hardware permits

<sup>1</sup>REALtime Cutting Tool Inspection

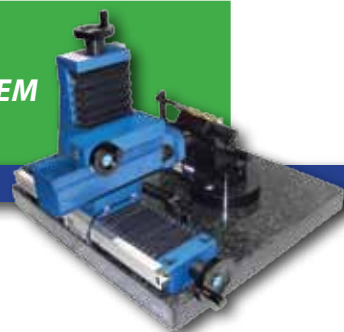


Euro-Tech Corporation  
Menomonee Falls, WI 53051  
PH: 262.781.6777  
FAX: 262.781.2822

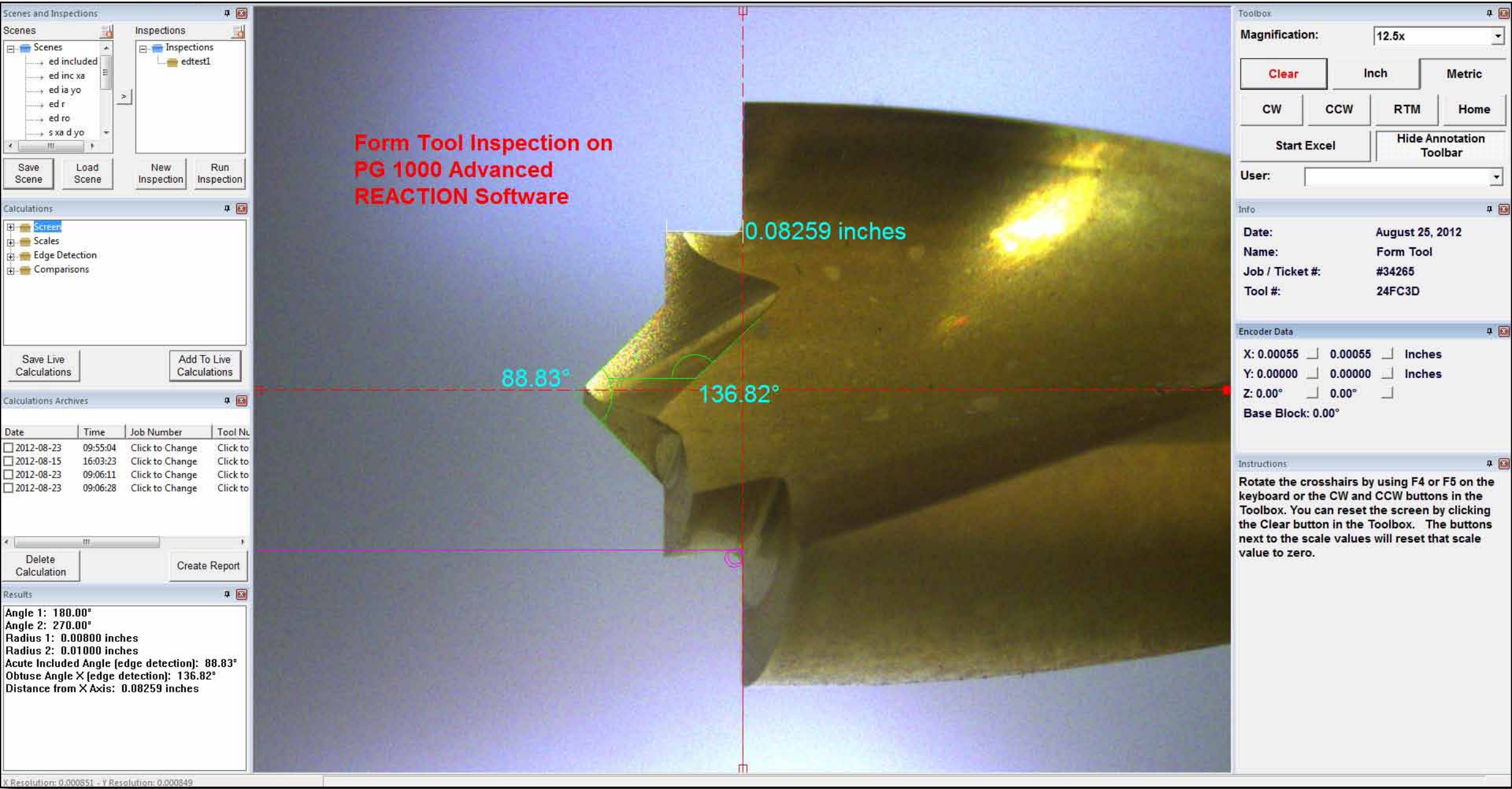




# 400-Advanced REACTION<sup>1</sup> SYSTEM



## ADVANCE REACTION<sup>1</sup> SOFTWARE



<sup>1</sup>REALtime Cutting Tool Inspection

Shown at 1920 x 1080 Resolution; 1680 x 1050 Minimum Resolution

## SOFTWARE SPECIFICATIONS

- Software language\*: English, German
- Screen display: Date, tool number and name input by operator, electronic crosshair (Z-axis), slide positions "X" horizontal and "Y" vertical, inch/metric display, menu bar, tool bar, status bar, note pad, Windows "Help" file
- Software features\*:
  - Toolbox: Control the most frequently used inspection functions on the desktop with the click of your mouse
  - Info: Displays the date, enter the tool or operator name, job or ticket number and tool number for future reference use
  - Encoder Data: Displays primary and secondary positions of "X" and "Y" axis, crosshair rotation, base block position (Advance systems only)
  - Instructions: Text instructions on how functions work, video demos are available for all calculations by right mouse clicking the calculation you choose
  - Scenes and Inspections: Save all calculations on the screen image or scene, put multiple scenes together to make a tool inspection
  - Calculations: Choose a calculation method to make your inspection or inspections on a scene, use multiple calculations in different colors, save the scene for reuse in scenes or inspections
  - Calculation Archives: Save your calculations to create tool inspection reports for documentation
  - Results: See the results of all your screen calculations, transfer them to your own Excel spread sheets
- Network compatible.
- Supports ISO

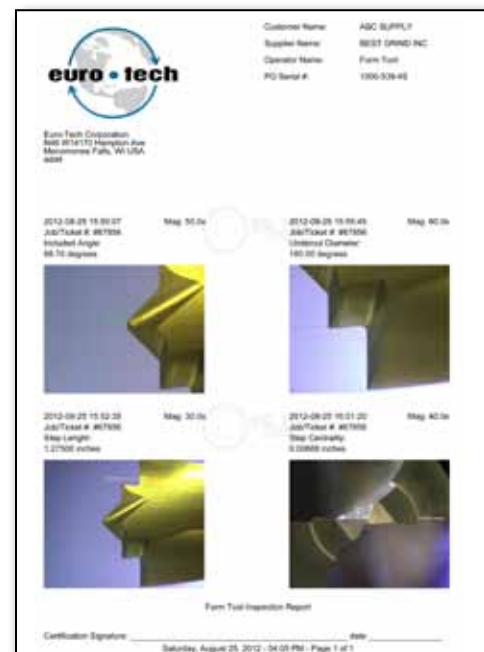
\*Euro Tech reserves the right to change microscope, digital readout, scale manufacturers and camera Manufacturers, computer manufacturers, operating systems and computer components as needed



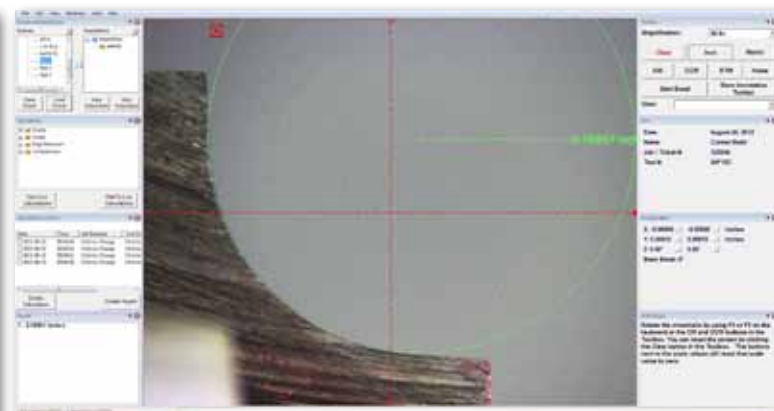
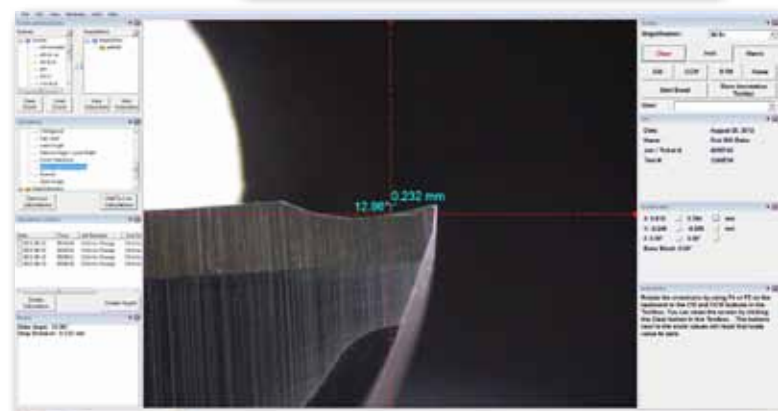
for more information visit [www.pg1000.com](http://www.pg1000.com)



tool inspection  
report ▶



rake angle inspection  
using scales ▼



radii inspection  
using edge detection



gage calibration  
report

## 200-Basic REACTION<sup>1</sup> SYSTEM

### ▼ HARDWARE SPECIFICATIONS:

Microscope:	*00464-1A 6X optical system	Language:	English <sup>3</sup>
Magnification:	15x, 20x, 30x, 40x, 55x, 75x, 95x <sup>2</sup>	Software:	All software documentation is electronic and available for download from the PG1000 web site <a href="http://www.pg1000.com">www.pg1000.com</a>
Field of view:	15x = 22 mm, 20x = 16.5 mm, 30x = 11.0 mm, 40x = 8 mm, 55x = 6.5 mm, 75x = 4.2 mm, 95x = 3.5 mm	Screen Resolutions:	Low = .020 mm (.00078") High = .0017 mm (.000078")
Camera:	*1.3 mega pixel 1/2" format USB CCD color camera	Repeatability:	.010 mm (.0008")
Computer:	*Dell mini-tower or desk top, i3 or higher quad core processor 3 GB RAM 250 GB hard drive. Digital DVI video interface	General Information:	Dimensions: 24" wide x 19" deep x 18" high Weight: 140 lbs Power: 110 volts default; 220 optional
Operating System:	*Windows 7, 32 or 64 bit		
Scales:	*Fagor		
Light:	Variable Intensity LED work light		

\*Euro Tech reserves the right to change microscope, digital readout, scale manufacturers and camera Manufacturers, computer manufacturers, operating systems and computer components as needed

<sup>1</sup>REALtime Cutting Tool Inspection

<sup>2</sup>Optional magnifications available at the time of order

<sup>3</sup>Additional operating system languages to be available after introduction of REACTION Software

Euro-Tech Corporation • N48 W14170 Hampton Ave. • Menomonee Falls, WI 53051 • PH: 262.781.6777 • FAX: 262.781.2822



## PG 1000 Cutting Tool Inspection Systems



**PG 1000**  
Cutting Tool  
Inspection System

for more information visit  
[www.pg1000.com](http://www.pg1000.com)  
[www.eurotechcorp.com](http://www.eurotechcorp.com)  
or email  
[pg1000@eurotechcorp.com](mailto:pg1000@eurotechcorp.com)

Package Includes Hardware,  
Software & Computer

## 200-Basic REACTION<sup>1</sup> SERIES

### COMPARE THE FEATURES:

- Basic REACTION<sup>1</sup> Software
- 1.3 Mega Pixel USB CCD camera
- Low light imaging requires minimum light and reduces hot spots
- 6X Microscope, magnifications from 15X to 95X
- Focus indication for edge detection calculation
- CAD overlay software
- Automatic screen calibration
- Segmented scale calibration
- Euro-Tech PGEB6 6 channel USB Encoder Interface
- Free upgrade software downloads as hardware permits

<sup>1</sup>REALtime Cutting Tool Inspection

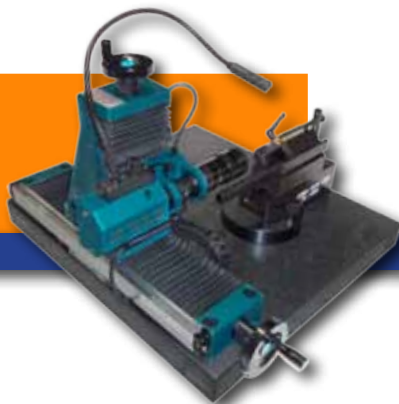


Euro-Tech Corporation  
Menomonee Falls, WI 53051  
PH: 262.781.6777  
FAX: 262.781.2822

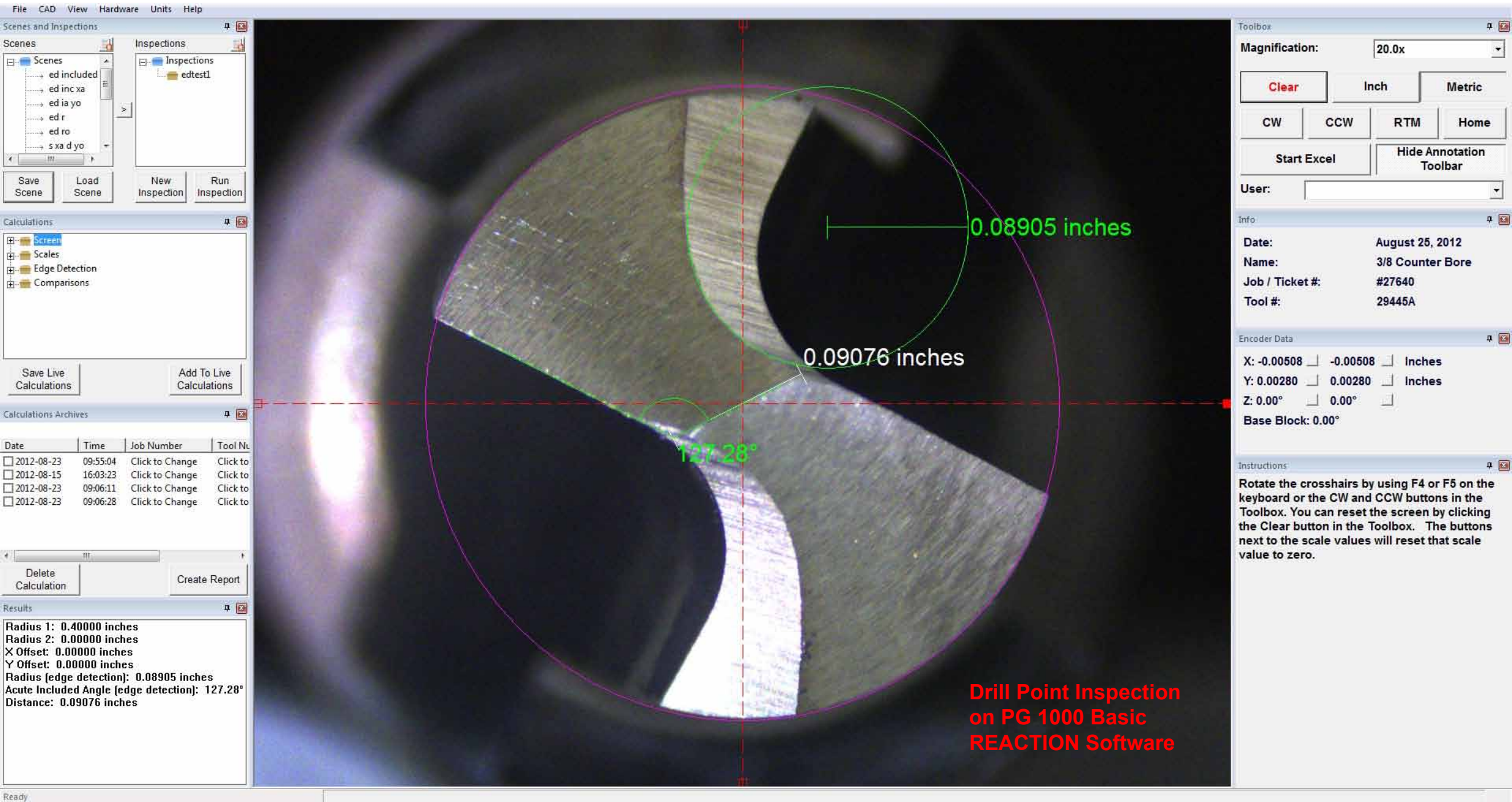




# 200-Basic REACTION<sup>SERIES</sup>



## BASIC REACTION<sup>1</sup> SOFTWARE



### ▼ SOFTWARE SPECIFICATIONS

Software language*:	English, German
Screen display:	Date, tool number and name input by operator, electronic crosshair (Z-axis), slide positions "X" horizontal and "Y" vertical, inch/metric display, menu bar, tool bar, status bar, note pad, Windows "Help" file
Software features*:	
Toolbox:	Control the most frequently used inspection functions on the desktop with the click of your mouse
Info:	Displays the date, enter the tool or operator name, job or ticket number and tool number for future reference use
Encoder Data:	Displays primary and secondary positions of "X" and "Y" axis, crosshair rotation, base block position (Advance systems only)
Instructions:	Text instructions on how functions work, video demos are available for all calculations by right mouse clicking the calculation you choose
Scenes and Inspections:	Save all calculations on the screen image or scene, put multiple scenes together to make a tool inspection
Calculations:	Choose a calculation method to make your inspection or inspections on a scene, use multiple calculations in different colors, save the scene for reuse in scenes or inspections
Calculation Archives:	Save your calculations to create tool inspection reports for documentation
Results:	See the results of all your screen calculations, transfer them to your own Excel spread sheets
	Network compatible
	Supports ISO

<sup>1</sup>REALtime Cutting Tool Inspection

Shown at 1920 x 1080 Resolution; 1680 x 1050 Minimum Resolution

\*Euro-Tech reserves the right to change microscope, digital readout, scale manufacturers and camera Manufacturers, computer manufacturers, operating system computer components and software as needed



for more information visit [www.pg1000.com](http://www.pg1000.com)

# PG 1000 Cutting Tool Inspection Systems



**PG 1000**  
Cutting Tool  
Inspection System

for more information  
visit  
[www.pg1000.com](http://www.pg1000.com)  
[www.eurotechcorp.com](http://www.eurotechcorp.com)

Package Includes Hardware,  
Digital Readout and Linear Scales

## Model 1000-200-E

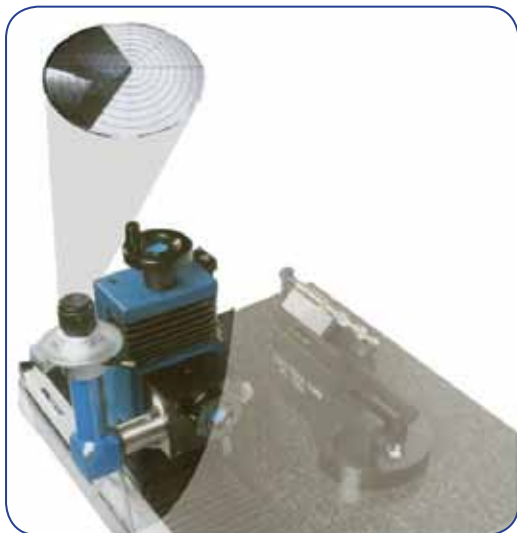
### COMPARE THE FEATURES:

- Competitive cost
- Robust, shop floor durable
- High quality Swiss Centering microscope with protractor for angle measurement
- Image viewed under magnification as corrected image
- 10x and 25x standard magnification; 5x, 50x and 100x optional
- Uses same base and slides as software system
- Can be upgraded to basic software system
- Designed exclusively for cutting tool inspection
- Large selection of workholding accessories.



Euro-Tech Corporation  
N48 W14170 Hampton Avenue  
Menomonee Falls, WI 53051  
PH: 262.781.6777 FAX: 262.781.2822  
Email: [pg1000@eurotechcorp.com](mailto:pg1000@eurotechcorp.com)





# Model 1000-200-E

## ► Microscope Specifications:

Microscope:	*Isoma 157 Centering microscope with protractor for angle measurement.
Measurement range:	360 degrees
Accuracy:	10'
Magnification:	10x and 25x standard (Optional 5x, 50x and 100x)
Field of view:	10x lens 15 mm (.590") 25x lens 6 mm (.236")
Scales:	*Fagor
Digital Readout:	* Fagor Innova 20iM DRO
Features:	Inch/mm conversion, presets and memory
Resolution:	.00005" standard ( .000010" Optional)
Voltage:	110/V, 60 Hz 220/V, 50 Hz (Optional)

### Optional Readout

Manufacturer:	* Fagor Innova 30iM DRO
Features:	Centerline locator, presets, memory, metrology functions. RS 232 output for SPC data collector. Serial output for a printer
Resolution:	.00005"standard (.000010" Optional)
Voltage:	110/V, 60 Hz 220/V, 50 Hz (Optional)

### Product Information:

Base Hardware	See Euro-Tech web site <a href="http://www.pg1000.com">www.pg1000.com</a> or PG 1000 brochure for construction details.
Warranty:	1 year on all parts supplied by Euro-Tech at the time of purchase as an upgrade or full system
Calibration:	Euro-Tech recommends the purchase of calibration part #1000-570 for monitor screen and scale calibration. This reticle can be rented from Euro-Tech for \$200 per week. See Euro-Tech web site for complete details and rental form.

\* Euro-Tech reserves the right to change microscope, digital readout and scale manufacturers, camera manufacturers, computer manufacturers, operating systems and computer components as needed.





# PG 1000 Cutting Tool Inspection Systems



**PG 1000**  
Cutting Tool  
Inspection System

for more information  
visit  
[www.pg1000.com](http://www.pg1000.com)  
[www.eurotechcorp.com](http://www.eurotechcorp.com)

## PG 102

### FEATURES:

Tool diameter range .078" through 1.562"

- Applications
  - Cutting edge height
  - Index accuracy
  - Web concentricity (Requires accessory kit)
  - Step concentricity (Requires accessory kit)
- Application
  - Standard twist drills
  - 3 or 4 flute drills
  - Right or left hand drills
- Construction
  - Roller bearing supported cutting edge tester with carbide insert and indicator
  - Carbide tipped end stop
  - Five (5) interchangeable fully ground V-Blocks to accommodate both large and small diameter drills
  - Indicator measuring stand with positioning arms and clamps (optional)
  - Stepped cutting edge stop (optional)



Euro-Tech Corporation  
N48 W14170 Hampton Avenue  
Menomonee Falls, WI 53051  
PH: 262.781.6777 FAX: 262.781.2822  
Email: [pg1000@eurotechcorp.com](mailto:pg1000@eurotechcorp.com)



# PG 1000 Cutting Tool Inspection Systems

PG 102





# PG 1000 Cutting Tool Inspection Systems

## Custom Fixtures Available

*Just a few of the toolholding devices  
designed for cutting tool inspection*

### LIST OF ACCESSORIES

Part No.	Description
1000-580	Back Light
1000-545	Ball Bushing Chuck
1000-542	Ball Bushing Chuck
1000-540	Ball Bushing Chuck
1000-625	Collet Chuck
1000-055	Fiber Optic Light
1000-570	Concentricity Fixture
1000-575	Calibration Fixture

Continued on Back Page ►



**PG 1000**  
Cutting Tool  
Inspection System

for more information  
visit  
[www.pg1000.com](http://www.pg1000.com)  
[www.eurotechcorp.com](http://www.eurotechcorp.com)

## PG Accessories



1000-580



1000-055



1000-540



1000-570



1000-625



1000-575



Euro-Tech Corporation  
N48 W14170 Hampton Avenue  
Menomonee Falls, WI 53051  
PH: 262.781.6777 FAX: 262.781.2822  
Email: [pg1000@eurotechcorp.com](mailto:pg1000@eurotechcorp.com)



# PG Accessories cont.

## PG 1000 Cutting Tool Inspection Systems

1000-026-2



1000-257



1000-515



1000-590



1000-500

1000-501



1000-650



1000-510

### LIST OF ACCESSORIES Cont.

Part No.	Description
1000-026-2	10" V-block
1000-257	Mini V-block
1000-590	Base Block with Encoder
1000-650	Gun Drill Fixture
1000-515	Light Diffuser
1000-500	Large Centers Fixture
1000-501	Mini Center Fixture
1000-510	ISO 50 Taper Adjuster

Euro-Tech Corporation  
N48 W14170 Hampton Avenue  
Menomonee Falls, WI 53051  
PH: 262.781.6777 FAX: 262.781.2822  
Email: [pg1000@eurotechcorp.com](mailto:pg1000@eurotechcorp.com)



**YKT** Exclusive Distributor  
**YKT Corporation**

URL <http://www.ykt.co.jp> E-mail [ykt100@ykt.co.jp](mailto:ykt100@ykt.co.jp)  
Headquarters

7-5, Yoyogi 5-chome, Shibuya-ku, Tokyo 151-8567, Japan  
Phone: +81-3-3467-1251 Fax: +81-3-3485-7990

**YKT (Shanghai) International Trading Co., Ltd.**

7th Fl.-K. Huamin Empire Plaza 726, Yan An West Road,  
Shanghai, 200050, P.R.China

Phone: +86-21-6225-9911 Fax: +86-21-5238-0087

**YKT (TAIWAN) CORPORATION**

6th Fl.-3, Nanjing World Trade IC Building 343,  
Nanjing E Rd.Sec. 5, Taipei, Taiwan

Phone: +886-2-2745-5430 Fax: +886-2-2745-5630

**YKT EUROPE GmbH**

Hedelfinger Strasse 1773760 Ostfildern, F.R.Germany  
Phone: +49-711-443264 Fax: +49-711-4411281