



## Thermo Scientific Laboratory Consumables Catalog

Bioproduction | Cell Culture | Diagnostics  
Filtration | General Labware | IVF  
Microplates for Drug Discovery | Packaging  
Sample Storage

**Quality, Choice**  
**and Innovation**  
for your applications

	Cosmos Supply Co.,Ltd. cosmos_supply@hotmail.com cosmos_supply@yahoo.co.th
	QTS Agro Co.,Ltd. qts_agro@hotmail.com qts_agro@yahoo.co.th
<a href="http://www.cosmos-supply.com">www.cosmos-supply.com</a>	

**Thermo**  
SCIENTIFIC

<b>Thermo Scientific Products</b>	<b>Page</b>
Nalgene Large Funnels	326
Nalgene Heavy-duty Funnels	327
Nalgene Büchner Two-Piece Funnels	327
Nalgene Separatory Funnels PPCO	328
Nalgene Separatory Funnels Teflon® FEP	329
Nalgene Mason Jars	330
Nalgene Fluid-Transfer Closure	331
Nalgene Straight-Sided Wide-Mouth Jars	332
Nalgene Straight-Sided Jar and Mason Jar Replacement Closures	335
Nalgene Jars with Cover	336
Nalgene Hydrometer Jar	337
Nalgene Lab Notebooks with PolyPaper Pages	338
Nalgene Laboratory Notebooks with Regular Paper Pages	339
Nalgene Deluxe Laboratory Notebooks with Regular Paper Pages	339
Nalgene Duplex Lab Notebooks	340
Nalgene Field Notebook, Spiral-Bound	341
Nalgene Polyolefin Plastic Paper Sheets	342
Nalgene Polyolefin Pressure-Sensitive Labels	343
Nalgene Right-To-Know Custom Labeling System	344
Nalgene Lab Markers	344
Nalgene Pipet Box Holder	345
Nalgene Dispensing Bins	345
Nalgene Parafilm Dispensers	346
Nalgene Stackable Drawer, All Purpose	346
Nalgene Pipetter Rack and Stand	347
Nalgene Utility Boxes	347
Nalgene Large Sterilizing Pans	348
Nalgene Autoclavable Pans	348
Nalgene Pipet/Instrument Sterilizing Tray with Cover	349
Nalgene Pans	349
Nalgene Autoclaving Baskets	350
Nalgene Pneumatic Trough	350
Nalgene Pipet Baskets	351
Nalgene Pipet Jars	353
Nalgene Pipet Washers/Rinsers	354
Nalgene Pipet Cleaning Equipment Sets	354
Nalgene Unwire Test Tube Racks	355
Nalgene Unwire Test Tube Racks	356
Nalgene Unwire Half-Racks	357
Nalgene Unwire Test Tube Racks PP	358
Nalgene Test Tube Racks, General Purpose PC	359
Nalgene Test Tube Racks, General Purpose PP	359
Nalgene Test Tube Slant Racks	360
Nalgene Test Tube Peg Racks	361
Nalgene Microcentrifuge Tube Rack	361
Nalgene Floating Microtube Racks	362
Nalgene Safety Bottle Carriers	363
Nalgene Safety Half-Liter Bottle Carriers	364
Nalgene 4-in-1 EZ Tote Bottle Carrier	364
Nalgene Multi-Bottle Rack	365
Nalgene Benchtop Beta Radiation Shield	366

<b>Thermo Scientific Products</b>	<b>Page</b>
Nalgene Beta Waste Container (with bottle)	367
Nalgene Beta Waste Containers	368
Nalgene Safety Splash Shield	369
Nalgene Faceshield	370
Nalgene Staining Boxes	371
Nalgene Suspended Magnetic Stir Bars	372
Nalgene Stirring Rod	372
Nalgene 180 Clear Plastic Tubing	373
Nalgene 180 Clear Plastic Vacuum Tubing	375
Nalgene 180 Clear Plastic Metric Tubing	376
Nalgene 980 Braided Clear Tubing	377
Nalgene 280 Tubing	378
Nalgene 489 Tubing	379
Nalgene 689 Tubing	380
Nalgene 870 Tubing	381
Nalgene 890 Tubing	382
Selection Guide For Thermo Scientific Nalgene Tubing Products	383
Chemical Resistance	384
Recommended Applications	384
Tolerances	385
Nalgene Vacuum Chamber	386
Nalgene Replacement Plates for Vacuum Chambers	386
Nalgene Replacement Vacuum Jars	387
Nalgene Repairable Hand-Operated Vacuum Pumps without Gauge	388
Nalgene Repairable Hand-Operated Vacuum Pumps with Gauge	389
Nalgene Repairable PVC Hand-Operated Vacuum Pump Repair Kits	389
Nalgene Repairable Hand-Operated Pump with Gauge	390
Nalgene Metal Hand-Operated Vacuum Pump Repair Kit	390
Nalgene Vacuum Pump Aspirator	391
Nalgene Sample Vials with Closure	392
Nalgene Economy Wash Bottles	393
Nalgene Unitary Wash Bottles	394
Nalgene Wash Bottles	395
Nalgene Wide-Mouth Wash Bottles	396
Nalgene Narrow-Mouth Color-Coded Wash Bottles	397
Nalgene Color-Coded Unitary Wash Bottles	397
Nalgene Unitary Safety Wash Bottles	398
Nalgene Autoclavable Wash Bottles	398
Nalgene Fluorinated Solvent Wash Bottles	399
Nalgene Right-To-Know Labeling Guide	400
Nalgene Right-To-Know Custom Labeling System	401
Nalgene Vented Unitary Right-To-Know Wash Bottles	402
Nalgene Right-To-Know Narrow-Mouth Wash Bottles	403
Nalgene Biohazardous Waste Containers	404
Nalgene Safety Waste Funnel Systems	405
Nalgene Safety Waste Funnel Systems	406
Nalgene Large Waste Containers with Cover	407

## Closure system

Designed and offered as a system, Nalgene bottles and closures are guaranteed leakproof\* and offer superior resealability. Most Nalgene closures have no liner\*\* that can wear, crease, cause contamination or separate.

Nalgene closures are made specifically for Nalgene bottles. Use of Nalgene bottles or closures with non-Nalgene components voids the leakproof guarantee. All bottles in this catalog have Nalgene closures available.

\* *Leakproof* defined in the product sections.

\*\* Closures with gaskets or liners are noted in the product descriptions.



## ► Thermo Scientific Nalgene Sample Bags low-density polyethylene



**Nalgene™ Sample Bags are ideal for small lab items, botanical samples and other specimens.**

These heavy-duty, double-track zipper bags lock securely, so dry samples stay dry and moist samples stay moist.

### details

- Low-density polyethylene is clear for easy identification of contents
- 4-mil thick walls are strong and waterproof, to protect your samples
- Bags are waterproof to keep contents dry
- Transparent

*Notes: Not recommended for storing liquids*

### Nalgene Sample Bags

Cat. No.	W x L, cm (in.)	No. per Pack	No. per Case
6255-0406	10.2 x 15.2 (4 x 6)	50	500
6255-0508	12.7 x 20.3 (5 x 8)	50	500
6255-0613	15.2 x 33.0 (6 x 13)	50	250
6255-0913	22.9 x 33.0 (9 x 13)	50	250
6255-0918	22.9 x 45.7 (9 x 18)	50	250

**seal ring** A seal ring molded inside the closure fits tightly against the beveled inner edge (chamfer) of the bottle neck forming a leakproof valve seal as the closure is tightened. Most bottles and closures are molded of different materials to enhance their sealing capability.

**neck ring** Most Nalgene bottles have a neck ring for use with tamper-evident shrink bands.

**threads** Nalgene containers have continuous straight-shouldered, semi-buttruss threads. They are deeper than you'll find on typical plastic or glass bottles. It's virtually impossible to jump or strip the threads by over-torque. They're another mark of good bottle design.

**heavy-duty, uniform walls** You can feel and see the difference. Advanced molding technology provides walls with a degree of uniform thickness and quality you will not find in other bottles. The durable walls of Nalgene bottles are unusually resistant to splitting or puncturing.

**bottom** Look at the bottom of a Nalgene bottle. The base is flatter than most for greater stability – especially important when bottles are used on filling lines. Resin identification letters are molded into the bottom, along with the capacity. SPI recycling codes are molded into Lab Quality Bottles 500 mL and larger.

► **Thermo Scientific Nalgene Griffin Low-Form Beakers**  
polypropylene copolymer



**Nalgene™ Griffin Low-Form Beakers provide excellent chemical resistance and convenient stacking capabilities.**

All sizes have easy-to-read silk-screened graduations.

**details**

- No drip, single-spout design provides precision pouring control
- With ribs for easy stacking
- Silk screened with graduations, size code, resin code, catalog number, max. temperature and "No Flame" symbol for easy identification and safe use
- Autoclavable/Graduated

**Compliance:** Meets ISO/DIN 7056 International Standards for Laboratory Plasticware Beakers.

*Notes: Not for use on hotplates.*

**Nalgene Griffin Low-Form Beakers**

Cat. No.	Capacity, mL	No. per Pack	No. per Case
1201-0030	30	12	48
1201-0050	50	12	48
1201-0100	100	12	48
1201-0150	150	12	48
1201-0250	250	6	36
1201-0400	400	6	36
1201-0600	600	4	24
1201-1000	1000	3	12
1201-2000	2000	1	6
1201-4000	4000	1	4



## ► Thermo Scientific Nalgene Griffin Low-Form Beakers polymethylpentene



**Nalgene™ Griffin Low-Form Beakers are suitable for continuous use at 150°C with intermittent service to 175°C.**

Beakers have the transparency of glass, excellent chemical resistance and heat tolerance. All size beakers have easy to read silk-screened graduations.

### details

- Transparent PMP material allows a clear view of beaker contents
- No-drip, single-spout design provides precision pouring control
- With ribs for easy stacking
- Silk-screened with graduations, size code, resin code, catalog number, max. temperature and “No Flame” symbol for easy identification and safe use
- Autoclavable/Graduated/Transparent

**Compliance:** Meets ISO/DIN 7056 International Standards for Laboratory Plasticware Beakers.

*Notes: Not for use on hotplates.*

### Nalgene Griffin Low-Form Beakers

Cat. No.	Capacity, mL	No. per Pack	No. per Case
1203-0030	30	12	36
1203-0050	50	12	36
1203-0100	100	12	36
1203-0150	150	12	36
1203-0250	250	6	24
1203-0400	400	6	24
1203-0600	600	4	12
1203-1000	1000	3	12
1203-2000	2000	1	4
1203-4000	4000	1	4

► **Thermo Scientific Nalgene Griffin Low-Form Beakers**  
Teflon® PFA (perfluoroalkoxy)



**Nalgene™ Low-Form Beakers are molded from chemically-resistant perfluoroalkoxy resin.**

Heavy-wall design makes these beakers sturdy and tough for continual lab usage. Tolerates a wide temperature range: -270°C to +250°C.

**details**

- No-drip single-spout design provides precision pouring control
- Highly resistant to most chemicals, including the strongest sulfuric, nitric, chromic and phosphoric acids – will not contaminate contents with leachables
- Withstands extreme temperatures from -270°C to +250°C for versatility in your lab
- Autoclavable/PFA

*Notes: Not for use on hotplates.*

Teflon® is a registered trademark of DuPont used under license by Nalge Nunc International Corporation.

**Nalgene Griffin Low-Form Beakers**

Cat. No.	Capacity, mL	No. per Pack	No. per Case
1510-0050	50	1	6
1510-0100	100	1	6
1510-0250	250	1	6
1510-0600	600	1	4
1510-1000	1000	1	4



## ► Thermo Scientific Nalgene Graduated Beakers with Handles

high-density polyethylene



**Nalgene™ HDPE Beakers with handles feature an extra-heavy wall for safe handling of acids, alkalis and hot solutions.**

Sturdy rectangular handle is easy on the hands, and provides reliable support and dispensing control.

### details

- Molded-in graduations in both oz. and mL won't wear off with continuous use or washings
- Molded-in rectangular handle provides easy, safe handling and pouring
- Excellent chemical resistance makes these usable for a wide range of solutions
- Graduated

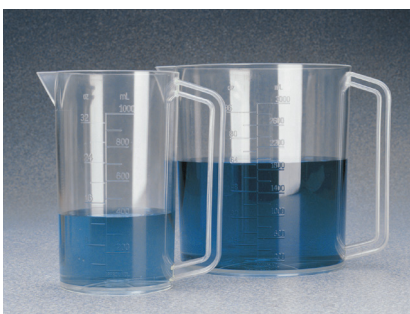
*Notes: Not for use on hotplates.*

#### Nalgene Graduated Beakers with Handles

Cat. No.	Capacity, mL	No. per Pack	No. per Case
1220-1250	1000	1	6
1220-2500	3000	1	6

## ► Thermo Scientific Nalgene Graduated Beakers with Handles

polymethylpentene



**Nalgene™ PMP Beakers resist acids, bases, aliphatic alcohols, aldehydes and esters.**

Beakers have rectangular handle for easy carrying and pouring and withstand continuous use at high temperatures.

### details

- Withstands continuous exposure to temperatures as high as 150°C and intermittent temperatures to 175°C
- Transparent to microwaves
- Transparent PMP material allows a clear view of beaker contents
- Molded-in graduation in both oz. and mL won't wear off with continuous use or washings
- Excellent chemical resistance to acids, bases and aliphatic alcohols make these beakers useful for a broad range of solutions
- Sturdy, molded-in rectangular handle provides easy, safe handling and pouring
- Autoclavable/Transparent/Graduated

*Notes: Not for use on hotplates.*

#### Nalgene Graduated Beakers with Handles

Cat. No.	Capacity, mL	No. per Pack	No. per Case
1223-1000	1000	1	6
1223-3000	3000	1	6

## ► Thermo Scientific Nalgene Graduated Beakers with Handles

Teflon® PFA (perfluoroalkoxy)



**Nalgene™ Beakers with Handles feature extraordinary chemical resistance and can be used repeatedly for high-purity applications.**

Can be used (and re-used) with strong oxidizing agents, acids, hydrocarbons and ketones. Widest temperature range: -270°C to +250°C. Not for use on hot plates. Teflon® PFA is “non-stick” making the beaker easy to clean and resistant to contamination.

### details

- Withstands exposure to extreme temperatures from -270°C to 250°C
- Rigid and translucent, enabling easy and consistent viewing of liquid levels
- Molded-in graduation in both oz. and mL won't wear off with continuous use or washings
- Excellent chemical resistance to strong oxidizing agents, acids, hydrocarbons and ketones make these beakers useful for a broad range of high-purity applications
- Molded-in rectangular handle provides easy, safe handling and pouring
- Autoclavable

*Notes: Not for use on hotplates.*

Teflon® is a registered trademark of DuPont used under license by Nalge Nunc International Corporation.

### Nalgene Graduated Beakers with Handles

Cat. No.	Capacity, mL	No. per Case
DS1511-1000	1000	1
DS1511-3000	3000	1



The Thermo Scientific Nalgene Labware Value Pack offers a convenient assortment of beakers and other popular labware items.

see page 302



## ► Thermo Scientific Nalgene Clean Sheets Bench/Drawer Liner polyethylene



**Nalgene™ polyethylene bench/drawer liners are ideal as a sink liner or titration background.**

Can be cut to any size and stapled, tacked or taped. Provides cushioning and liquid barrier protection.

### details

- Made of 1/8 in. (3.2 mm) thick closed-cell polyethylene foam to cushion benchtop items
- Smooth and resilient, this nonabsorbent pad is versatile in your lab – use for a multitude of purposes
- Excellent chemical resistance provides protection wherever placed against spills
- Can be cut to any size to fit benches, shelves, drawers – anywhere protection is needed against spills, vibration, heat, dirt or breakage
- Non-absorbant

### Nalgene Clean Sheets™ Bench/Drawer Liner

Cat. No.	W x L	No. per Pack	No. per Case
6283-1250	305 mm x 15.2 m (12 in x 50 ft.)	1	2
6283-1850	457 mm x 15.2 m (18 in x 50 ft.)	1	2

► **Thermo Scientific Nalgene Versi-Dry Surface Protectors**  
absorbent fiber with polyethylene backing



**Nalgene™ Versi-Dry™ Surface Protectors have thousands of Thirsty Cells to quickly absorb spills and cushion breakable labware.**

The polyethylene backing protects your benchtop from the harshest of chemicals. Can be used as a bench protector, shelf liner, cabinet liner or for wiping up isolated spills.

**details**

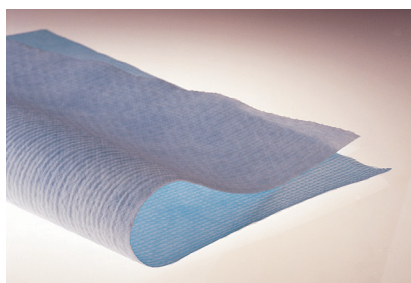
- Cushioned surface minimizes breakage of glass labware when dropped or tipped over
- Skid resistant polyethylene backing resists harsh chemicals and protects your benchtop from spills and corrosion
- Low-pile flat surface provides stability for glassware that is likely to tip
- Versi-Dry quickly absorbs up to 750 mL/m<sup>2</sup> spills with its thousands of Thirsty Cells

**Nalgene Versi-Dry Surface Protectors**

Cat. No.	L x W	No. per Case
<b>Mat</b>		
62080-00	46 cm x 51 cm (18 x 20 in.)	350
<b>Dispenser Roll</b>		
62050-00	51 cm x 91 m (20 in x 300 ft)	1
62070-00	51 cm x 30 m (20 in x 100 ft)	4
<b>Rolls</b>		
62060-00	51 cm x 91 m (20 in x 300 ft)	2
62065-00	51 cm x 46 m (20 in x 150 ft)	2

## ► Thermo Scientific Nalgene Super Versi-Dry Surface Protectors

absorbent fiber with polyethylene backers



**Nalgene™ Super Versi-Dry™ Surface Protectors are long-lasting, waterproof, skid-resistant and chemical resistant.**

Cloth-like top layer will not fall apart even when wet. Absorbs spills and cushions breakable items.

### details

- Cushioned surface minimizes breakage of glass labware when dropped or tipped over
- Sheets lie flat and are skid resistant – use as a bench protector, tray liner, floor mat, cage liner or surgical mat
- Low-pile flat surface provides stability for glassware that is likely to tip and is an ideal replacement for the “blue diaper”
- Polyethylene backing resists harsh chemicals and protects your benchtop from spills and corrosion
- Super Versi-Dry quickly absorbs up to 1050 mL/m<sup>2</sup> to quickly absorb spills with its thousands of Thirsty Cells

### Nalgene Super Versi-Dry Surface Protectors

Cat. No.	Description	L x W	No. per Case
<b>Mats</b>			
74018-00		46 x 51 cm (18 x 20 in.)	350
74040-00		46 x 102 cm (18 x 40 in.)	175
74043-00	Table Mat	51 x 110 cm (20 x 43 in.)	150
74200-00	Floor Mat	102 x 508 cm (40 x 200 in.)	1
74218-00	Fume Hood Mat	46 x 51 cm (18 x 20 in.)	100
74240-00	Floor Mat	46 x 102 cm (18 x 40 in.)	50
<b>Rolls</b>			
74000-00		51 x 76m (20 in. x 250 ft.)	1
74050-00		30m x 51 cm (20 in. x 100 ft.)	4

► **Thermo Scientific Nalgene Lab Quality Wide-Mouth Bottles**  
high-density polyethylene



**Nalgene™ Lab Quality Wide-Mouth Bottles are general purpose bottles with countless applications in the lab or field.**

Wide mouth makes these bottles easy to fill. They exhibit excellent chemical resistance to most acids, bases and alcohols and suitable for freezer use to -100°C or for shipping liquids. Leakproof<sup>†</sup> performance guaranteed.

**details**

- Wide mouth makes these bottles easy to fill with solids or liquids
- Excellent chemical resistance to most corrosives make these bottles versatile and indispensable in your lab
- Ideal for storing, shipping and packaging liquids – uniform walls provide durability and resistance to splitting or punctures
- Can be used in a freezer down to -100°C (-148°F)
- Linerless caps provide the ultimate in leakproof protection without the use of liner that can wrinkle, cause leaks, or contaminate your reagents
- Leakproof<sup>†</sup>

**Includes:** Polypropylene screw closures

<sup>†</sup> The term “leakproof” applies to Thermo Scientific Nalgene products that meet the following criteria: a) Bottle/flask/funnel closure systems with closures smaller than 100 mm, after they are filled with water, inverted, withstand air pressure of 2psig for 2 minutes, and no water escapes; b) Bottle/funnel/flask closure systems of larger than 100 mm after they are filled with water, inverted for 15 minutes, and no water escapes. Note: these tests, using other liquids, may not yield the same results. To ensure safe usage, customers are advised to test Thermo Scientific Nalgene bottles and closures under conditions of their planned applications. Thermo Scientific Nalgene products are leakproof at ambient temperature and pressure when used with their Nalgene closures.

**Nalgene Lab Quality Wide-Mouth Bottles**

Cat. No.	Capacity, mL (oz)	Closure Size, mm	Neck I.D., mm	O.D., mm	Height with Closure, mm	No. per Pack	No. per Case
2104-0001	30 (1)	28	21	34	63	12	72
2104-0002	60 (2)	28	21	39	86	12	72
2104-0004	125 (4)	38	28	50	99	12	72
2104-0008	250 (8)	43	33	61	131	12	72
2104-0016	500 (16)	53	44	73	168	12	48
2104-0032	1000 (32)	63	53	91	199	6	24
2104-0048	1500 (48)	63	52	91	284	6	24



## ► Thermo Scientific Nalgene Wide-Mouth Economy Bottles

natural high-density polyethylene, natural polypropylene screw closure



**Nalgene™ Wide-Mouth Economy Bottles are lightweight versions of the original Nalgene Lab Quality Bottles, and are suitable for general purpose laboratory applications.**

A leakproof<sup>†</sup>, lighter-weight, more flexible version of Nalgene Lab Quality Bottles for less rigorous lab use where a heavier bottle is not required. Wide mouth is easy to fill.

### details

- Economical and recyclable
- Wide mouth makes these bottles easy to fill with solids or liquids
- Linerless caps ensure leakproof performance without a liner that can wrinkle, cause leaks and contaminate your solutions
- Leakproof<sup>†</sup>

**Includes:** Polypropylene screw closures

### Nalgene Translucent Wide-Mouth Economy Bottles

Cat. No.	Capacity, mL (oz)	Closure Size, mm	Neck I.D., mm	O.D., mm	Height with Closure, mm	No. per Case
2189-0001	30 (1)	28	21	34	63	72
2189-0002	60 (2)	28	21	39	86	72
2189-0004	125 (4)	38	28	50	99	72
2189-0008	250 (8)	43	33	61	131	72
2189-0016	500 (16)	53	44	73	168	48
2189-0032	1000 (32)	63	53	91	199	24



► **Thermo Scientific Nalgene Wide-Mouth Economy Bottle Bulk Pack**  
high-density polyethylene, polypropylene screw closure



**Nalgene™ Wide-Mouth Economy Bottle is a lightweight version of the original Nalgene bottle bulk packed for ultimate economy.**

Suitable for short-term general purpose laboratory and field applications such as collecting samples and containing working solutions like buffers, bench reagents and chemical aliquots. Thinner-walled and more flexible than the Nalgene Lab Quality Bottle, but still guaranteed leakproof†. Wide mouth is easy to fill with dry materials or liquids.

Lightweight versions of the original Nalgene Lab Quality bottle, suitable for light-duty, general purpose applications where a heavier bottle is not required

**details**

- Excellent chemical resistance to most acids, bases and alcohols
- Bulk packed for the ultimate in economical liquid containment
- Wide mouth makes these bottles easy to fill with solids or liquids
- Linerless caps ensure leakproof† performance without a liner that can wrinkle, cause leaks and contaminate your solutions
- Leakproof†

**Ordering Information:** Packaged in bulk quantities.

**Includes:** Polypropylene screw closures.

*Notes: Direct UV exposure should be avoided. The Nalgene Lab Quality Bottle (Cat. No. 2104) is recommended for hazardous and critical material containment.*

**Nalgene Wide-Mouth Economy Bottle Bulk Pack**

Cat. No.	Capacity, mL (oz)	Closure Size, mm	Neck I.D., mm	O.D., mm	Height with Closure, mm	No. per Case
332189-0002	60 (2)	28	21	39	86	1000
332189-0004	125 (4)	38	28	50	99	500
332189-0008	250 (8)	43	33	61	131	250
332189-0016	500 (16)	53	44	73	168	125
332189-0032	1000 (32)	63	53	91	199	50

## ► Thermo Scientific Nalgene Large Wide-Mouth Bottles

high-density polyethylene, white polypropylene screw closure



**Nalgene™ Large Wide-Mouth Bottles are great for a wide range of lab and field uses – particularly recommended for storage of dry chemicals or water sampling.**

Good for use in the freezer to -100°C (-148°F). Chemical resistant HDPE is compatible with a wide variety of lab reagents.

### details

- Excellent chemical resistance to most acids, bases and alcohols make this a versatile bottle
- Can be used in freezer to -100°C (-148°F) for long-term storage
- Linerless cap closes the bottle without a liner that can wrinkle, cause leaks and contaminate your solutions
- This bottle is not liquid leakproof

**Includes:** 100 mm polypropylene screw closures.

### Nalgene Large Wide-Mouth Bottles

Cat. No.	Capacity, L (gal.)	Closure Size, mm	Neck I.D., mm	O.D., mm	Height with Closure, mm	No. per Pack	No. per Case
2120-0005	2 (1/2)	100	89	119	244	1	6
2120-0010	4 (1)	100	89	153	288	1	6

## ► Thermo Scientific Nalgene Wide-Mouth Bottles

low-density polyethylene, polypropylene screw closures



**Nalgene™ Wide-Mouth Bottles are translucent and offer flexibility and impact resistance.**

Ideal for storing chemicals and standards, collecting and storing distilled water. Extremely low trace metal content in LDPE makes it ideal for trace metal analysis. Excellent chemical resistance to most acids, bases and alcohols.

### details

- Extremely low trace metal content in LDPE makes it ideal for trace metal analysis
- Excellent chemical resistance to most acids, bases and alcohols make this a versatile bottle; suitable for shipping liquids
- Can be used in freezer to -100°C (-148°F) for long-term storage
- Wide mouth is easy to fill
- Translucence allows easy viewing of liquid levels
- Linerless caps ensure leakproof performance without a liner that can wrinkle, cause leaks and contaminate solutions
- Leakproof†

**Includes:** Polypropylene screw closures.

### Nalgene Wide-Mouth Bottles

Cat. No.	Capacity, mL (oz.)	Closure Size, mm	Neck I.D., mm	O.D., mm	Height with Closure, mm	No. per Pack	No. per Case
2103-0001	30 (1)	28	21	34	63	12	72
2103-0002	60 (2)	28	21	39	86	12	72
2103-0004	125 (4)	38	28	50	99	12	72
2103-0008	250 (8)	43	33	61	131	12	72
2103-0016	500 (16)	53	44	73	168	12	48
2103-0032	1000 (32)	63	53	91	199	6	24



## ► Thermo Scientific Nalgene Lab Quality Wide-Mouth Bottles

polypropylene copolymer, polypropylene screw closure



**Nalgene™ Lab Quality Wide-Mouth Bottles are ideal for storing specimens and where autoclaving is required.**

Wide mouth makes it easy to fill. Exhibits excellent chemical resistance to most acids, bases and alcohols.

### details

- General purpose bottle exhibits excellent chemical resistance for a variety of uses in the lab
- Translucence allows easy viewing of liquid levels
- Linerless caps ensure leakproof performance without a liner that can wrinkle, cause leaks and contaminate your solutions
- Autoclavable/Leakproof†

**Includes:** Polypropylene screw closures.

*Notes: Completely disengage threads or remove cap before autoclaving.*

### Nalgene Lab Quality Wide-Mouth Bottles

Cat. No.	Capacity, mL (oz.)	Closure Size, mm	Neck I.D., mm	O.D., mm	Height with Closure, mm	No. per Pack	No. per Case
2105-0001	30 (1)	28	21	34	63	12	72
2105-0002	60 (2)	28	21	39	86	12	72
2105-0004	125 (4)	38	28	50	99	12	72
2105-0008	250 (8)	43	33	61	131	12	72
2105-0016	500 (16)	53	44	73	168	12	48
2105-0032	1000 (32)	63	53	91	199	6	24

## ► Thermo Scientific Nalgene Wide-Mouth Economy Bottles

polypropylene copolymer, polypropylene screw closure



**Nalgene™ Wide-Mouth Economy Bottles are lightweight versions of the original Nalgene Lab Quality bottle, suitable for light-duty, general purpose applications where a heavier bottle is not required.**

### details

- Lightweight versions of the original Nalgene Lab Quality bottle, suitable for light-duty, general purpose applications where a heavier bottle is not required
- Economical and recyclable
- Translucence allows easy viewing of liquid levels
- Linerless caps ensure leakproof performance without a liner that can wrinkle, cause leaks and contaminate your solutions
- Autoclavable/Leakproof†

**Includes:** Polypropylene screw closures.

*Notes: Completely disengage threads or remove cap before autoclaving.*

### Nalgene Wide-Mouth Economy Bottles

Cat. No.	Capacity, mL (oz.)	Closure Size, mm	Neck I.D., mm	O.D., mm	Height with Closure, mm	No. per Case
2187-0001	30 (1)	28	21	34	63	72
2187-0002	60 (2)	28	21	39	86	72
2187-0004	125 (4)	38	28	50	99	72
2187-0008	250 (8)	43	33	61	131	72
2187-0016	500 (16)	53	44	73	168	48
2187-0032	1000 (32)	63	53	91	199	24

## ► Thermo Scientific Nalgene Large Wide-Mouth Bottles

polypropylene copolymer, white polypropylene screw closure



**Nalgene™ Large Wide-Mouth Bottles** are specifically designed for applications where large volumes require autoclaving – large cap makes it easy to access contents.

### details

- Designed for applications where large volumes require autoclaving
- Large cap makes it easy to access contents
- Excellent chemical resistance makes this bottle suitable for a wide variety of uses in the lab or field
- Linerless cap closes the bottle without a liner that can wrinkle, cause leaks and contaminate your solutions
- Autoclavable

**Includes:** 100 mm polypropylene screw closures.

*Notes: Completely disengage threads or remove cap before autoclaving. This bottle is not liquid leakproof.*

### Nalgene Large Wide-Mouth Bottles

Cat. No.	Capacity, L (gal.)	Closure Size, mm	Neck I.D., mm	O.D., mm	Height with Closure, mm	No. per Pack	No. per Case
2121-0005	2 (1/2)	100	89	120	244	1	6
2121-0010	4 (1)	100	89	153	288	1	6



► **Thermo Scientific Nalgene Lab Quality Amber Wide-Mouth Bottles**  
 amber high-density polyethylene, amber polypropylene screw closures



**Nalgene™ Amber Wide-Mouth Bottles reduce UV light transmissions to protect light-sensitive contents.**

Useful for storage, shipping and packaging. Excellent chemical resistance to most acids, bases and alcohols. Easy to fill wide mouth. Guaranteed Leakproof\*.

**details**

- Opaque amber reduces UV light transmissions to protect light-sensitive contents
- Excellent chemical resistance to most acids, bases and alcohols make this a versatile bottle where exposure to light needs to be restricted
- Can be used in freezer to -100°C (-148°F) for long-term storage
- Wide mouth is easy to fill
- Linerless caps ensure leakproof performance without a liner that can wrinkle, cause leaks and contaminate solutions
- Leakproof\*

**Includes:** Amber polypropylene screw closures.

**Compliance:** Product meets the requirements for light-resistant containers per USP latest edition.

**Nalgene Lab Quality Amber Wide-Mouth Bottles**

Cat. No.	Capacity, mL (oz.)	Closure Size, mm	Neck I.D., mm	O.D., mm	Height with Closure, mm	No. per Pack	No. per Case
2106-0001	30 (1)	28	21	34	63	12	72
2106-0002	60 (2)	28	21	39	86	12	72
2106-0004	125 (4)	38	28	50	99	12	72
2106-0008	250 (8)	43	33	61	131	12	72
2106-0016	500 (16)	53	44	73	168	12	48
2106-0032	1000 (32)	63	53	91	199	6	24



## ► Thermo Scientific Nalgene Amber Wide-Mouth Economy Bottles

amber high-density polyethylene, amber polypropylene screw closures



**Nalgene™ Amber Wide-Mouth Bottles** are lightweight versions of the original Nalgene Amber Lab Quality bottle, suitable for light-duty, general purpose applications where a heavier bottle is not required.

Opaque Amber HDPE bottles reduce UV light transmissions to protect light-sensitive liquids.

Excellent chemical resistance to most acids, bases and alcohols make this a versatile bottle where exposure to light needs to be restricted

### details

- Opaque amber reduces UV light transmissions to protect light-sensitive liquids
- Economical and recyclable; designed for single use
- Can be used in freezer to -100°C (-148°F) for long-term storage
- Wide mouth for easy filling, sampling
- Linerless caps ensure leakproof performance without a liner that can wrinkle, cause leaks and contaminate your solutions
- Leakproof†

**Includes:** Polypropylene screw closures.

**Compliance:** Product meets the requirements for light-resistant containers per USP latest edition.

### Nalgene Amber Wide-Mouth Economy Bottles

Cat. No.	Capacity, mL (oz.)	Closure Size, mm	Neck I.D., mm	O.D., mm	Height with Closure, mm	No. per Case
DS2185-0001	30 (1)	28	21	34	63	72
DS2185-0002	60 (2)	28	21	39	86	72
DS2185-0004	125 (4)	38	28	50	99	72
DS2185-0008	250 (8)	43	33	61	131	72
DS2185-0016	500 (16)	53	44	73	168	48
DS2185-0032	1000 (32)	63	53	91	199	24

► **Thermo Scientific Nalgene Wide-Mouth Bottles**  
 polymethylpentene, polypropylene screw closure



**Nalgene™ Wide-Mouth PMP Bottles are designed to withstand temperatures from 20° to 175°C (68° to 347°F).**

Clear bottles offer better chemical resistance than transparent polycarbonate bottles. Withstands repeated autoclaving – even at 150°C (302°F). Guaranteed Leakproof†.

**details**

- Designed to tolerate a wide range of temperatures for versatility in the lab
- Good chemical resistance to acids and bases make these bottles suitable for a wide range of solutions
- Better clarity than other bottles of similar chemical resistance
- Linerless caps ensure leakproof performance without a liner that can wrinkle, cause leaks and contaminate your solutions
- Autoclavable/Transparent/Leakproof†

**Includes:** Polypropylene screw closures.

*Notes: Completely disengage threads or remove cap before autoclaving.*

**Nalgene Wide-Mouth Bottles**

Cat. No.	Capacity, mL (oz.)	Closure Size, mm	Neck I.D., mm	O.D., mm	Height with Closure, mm	No. per Pack	No. per Case
2107-0004	125 (4)	33	28	46	114	4	24
2107-0008	250 (8)	43	33	58	125	4	24
2107-0016	500 (16)	48	38	71	155	4	16
2107-0032	1000 (32)	53	43	89	203	4	16

## ► Thermo Scientific Nalgene Lab Quality Narrow-Mouth Bottles

high-density polyethylene, polypropylene screw closure



**Nalgene™ Lab Quality Bottles are specifically designed for demanding lab use.**

Nalgene Lab Quality Narrow-Mouth bottles are all-purpose Boston round bottles that are highly reliable and durable for long-term use. Ideal for storing, shipping and packaging liquids, these semi-rigid and translucent bottles offer excellent chemical resistance. Guaranteed leakproof†.

### details

- Excellent chemical resistance to most corrosives make these bottles versatile and indispensable in your lab
- Ideal for storing, shipping and packaging liquids – uniform walls provide durability and resistance to splitting or punctures
- Can be used in a freezer down to -100°C (-149°F)
- Linerless caps provide the ultimate in leakproof protection without the use of liner that can wrinkle, cause leaks or contaminate your reagents
- Leakproof†

**Includes:** Polypropylene screw closures.

### Nalgene Lab Quality Narrow-Mouth Bottles

Cat. No.	Capacity, mL (oz.)	Closure Size, mm	Neck I.D., mm	O.D., mm	Height with Closure, mm	No. per Pack	No. per Case
2002-9125	4 (1/8)	13	8	16	41	12	72
2002-9025	8 (1/4)	20	14	25	45	12	72
2002-9050	15 (1/2)	20	14	25	58	12	72
2002-0001	30 (1)	20	14	34	61	12	72
2002-0002	60 (2)	20	14	37	85	12	72
2002-0004	125 (4)	24	18	50	101	12	72
2002-0006	175 (6)	24	18	54	125	12	72
2002-0008	250 (8)	24	18	61	133	12	72
2002-0016	500 (16)	28	21	73	170	12	48
2002-9016	500 (16)	38-430	27	73	170	12	48
2002-0032	1000 (32)	38-430	27	91	216	6	24

### ► Select the perfect container for your application.

Go to: [www.thermoscientific.com/nalgenecontainers](http://www.thermoscientific.com/nalgenecontainers)  
or download our free apps from iTunes or the Android market  
– search *Nalgene Bottles*.

► **Thermo Scientific Nalgene Narrow-Mouth Economy Bottles**  
natural high-density polyethylene



**Nalgene™ Narrow-Mouth Economy Bottles are lightweight versions of the original Nalgene Lab Quality Bottle, suitable for lighter-duty, general-purpose applications.**

Nalgene Economy Bottles are guaranteed leakproof, and are suitable for containing samples and daily working solutions like buffers and bench reagents. Guaranteed leakproof†.

**details**

- Lightweight versions of the original Nalgene Lab Quality bottle, suitable for light-duty, general-purpose applications where a heavier bottle is not required
- Economical and reusable
- Translucence allows easy viewing of liquid levels
- Linerless caps provide the ultimate in leakproof protection without the use of liner that can wrinkle, cause leaks or contaminate your reagents
- Leakproof†

**Includes:** Polypropylene screw closures.

**Nalgene Narrow-Mouth Economy Bottles**

Cat. No.	Capacity, mL (oz.)	Closure Size, mm	Neck I.D., mm	O.D., mm	Height with Closure, mm	No. per Case
2089-0001	30 (1)	20	14	34	61	72
2089-0002	60 (2)	20	14	37	85	72
2089-0004	125 (4)	24	18	50	101	72
2089-0008	250 (8)	24	18	61	133	72
2089-0016	500 (16)	28	21	73	170	48
2089-0032	1000 (32)	38-430	27	91	216	24

## ► Thermo Scientific Nalgene Narrow-Mouth Economy Bottle Bulk Pack

high-density polyethylene, assembled



**Nalgene™ Narrow-Mouth Economy Bottle Bulk Packs are constructed of break-resistant translucent HDPE.**

These durable, break-resistant bottles are a lightweight version of the original Nalgene Lab Quality bottle, suitable for light-duty, general-purpose applications where a heavier bottle is not required. Guaranteed leakproof†.

### details

- Lightweight versions of the original Nalgene Lab Quality bottle suitable for light-duty, general-purpose applications where a heavier bottle is not required
- Economical and recyclable; designed for single use
- Translucence allows easy viewing of liquid levels
- Linerless caps provide the ultimate in leakproof protection without the use of liner that can wrinkle, cause leaks or contaminate your reagents
- Leakproof†

**Includes:** Polypropylene screw closures

**Ordering Information:** Conveniently packaged in bulk quantities

*Notes: Direct UV exposure should be avoided. The Nalgene Lab Quality Bottle (Cat. No. 2002-series) is recommended for hazardous or other critical material containment.*

### Nalgene Narrow-Mouth Economy Bottle Bulk Pack

Cat. No.	Capacity, mL (oz.)	Closure Size, mm	Neck I.D., mm	O.D., mm	Height with Closure, mm	No. per Case
332089-0004	125 (4)	24	18	50	101	500
332089-0008	250 (8)	24	18	61	133	250
332089-0016	500 (16)	28	21	73	170	125
332089-0032	1000 (32)	38-430	27	92	216	50





► **Thermo Scientific Nalgene Narrow-Mouth Bottles**  
low-density polyethylene



**Nalgene™ LDPE Narrow-Mouth bottles are extremely low in trace metal content, making them an excellent choice for applications like trace metal analysis. Exhibits flexibility, impact resistance and excellent visibility of contents.**

Excellent chemical resistance to most acids, bases and alcohols. Guaranteed leakproof†.

**details**

- Extremely low in trace metal content, making them an excellent choice for applications including trace metal analysis.
- Exhibits flexibility, impact resistance and excellent visibility of contents for a wide variety of uses in the lab
- Excellent chemical resistance to most acids, bases and alcohols make this a versatile bottle
- Can be used in freezer to -100°C (-148°F) for long-term storage
- Translucence allows easy viewing of liquid levels
- Linerless caps provide the ultimate in leakproof protection without use of liner that can wrinkle, cause leaks or contaminate your reagents
- Leakproof†

**Includes:** Polypropylene screw closures.

*Notes: Nalgene LDPE, HDPE, PP and PMP containers can be used for long-term storage, but direct UV exposure should be avoided.*

**Nalgene Narrow-Mouth Bottles**

Cat. No.	Capacity, mL (oz.)	Closure Size, mm	Neck I.D., mm	O.D., mm	Height with Closure, mm	No. per Pack	No. per Case
2003-9025	8 (1/4)	20	14	25	45	12	72
2003-9050	15 (1/2)	20	14	25	58	12	72
2003-0001	30 (1)	20	14	34	61	12	72
2003-0002	60 (2)	20	14	37	85	12	72
2003-0004	125 (4)	24	18	50	101	12	72
2003-0008	250 (8)	24	18	61	133	12	72
2003-0016	500 (16)	28	21	73	170	12	48
2003-9016	500 (16)	38-430	27	73	170	12	48
2003-0032	1000 (32)	38-430	27	91	216	6	24

## ► Thermo Scientific Nalgene Large Narrow-Mouth Bottles

low-density polyethylene



**Nalgene™ Large Narrow-Mouth Bottles are translucent and offer flexibility, impact resistance and excellent visibility of contents.**

Ideal for storing chemicals and standards, collecting and storing distilled water. Extremely low trace metal content in LDPE makes them ideal for trace metal analysis. Guaranteed leakproof†.

### details

- Extremely low trace metal content in LDPE makes them ideal for trace metal analysis
- Excellent chemical resistance to most acids, bases and alcohols make these versatile bottles
- Can be used in freezer to -100°C (-148°F) for long-term storage
- 4 and 8 L sizes feature a built-in shoulder loop for attaching identification tag
- Translucence allows easy viewing of liquid levels
- Linerless caps provide the ultimate in leakproof protection without the use of liner that can wrinkle, cause leaks, or contaminate your reagents
- Leakproof†

**Includes:** Leakproof† polypropylene screw closures.

*Notes: Nalgene LDPE, HDPE, PP and PMP containers can be used for long-term storage, but direct UV exposure should be avoided.*

### Nalgene Large Narrow-Mouth Bottles

Cat. No.	Capacity, L (gal.)	Closure Size, mm	Neck I.D., mm	O.D., mm	Height with Closure, mm	No. per Pack	No. per Case
2202-0005	2 (1/2)	38-430	25	121	249	1	6
2202-0010	4 (1)	38-430	25	152	333	1	6
2202-0020	8 (2)	53B	37	193	409	1	6

	Cosmos Supply Co., Ltd. cosmos_supply@hotmail.com cosmos_supply@yahoo.co.th
	QTS Agro Co., Ltd. qts_agro@hotmail.com qts_agro@yahoo.co.th
<a href="http://www.cosmos-supply.com">www.cosmos-supply.com</a>	

► **Thermo Scientific Nalgene Lab Quality Amber Narrow-Mouth Bottles**  
 amber high-density polyethylene



**Nalgene™ Lab Quality Amber Narrow-Mouth Bottles reduce UV light transmissions to protect light-sensitive liquids.**

Useful for storage, shipping and packaging. Excellent chemical resistance to most acids, bases and alcohols.

**details**

- Opaque Amber reduces UV light transmissions to protect light-sensitive liquids
- Excellent chemical resistance to most acids, bases and alcohols make these versatile bottles useful where exposure to light needs to be restricted
- Can be used in freezer to -100°C (-148°F) for long-term storage
- Linerless caps provide the ultimate in leakproof protection without the use of liner that can wrinkle, cause leaks, or contaminate your reagents
- Leakproof†

**Includes:** Amber polypropylene screw closures.

**Compliance:** Product meets the requirements for light-resistant containers per USP latest edition.

*Notes: Nalgene LDPE, HDPE, PP and PMP containers can be used for long-term storage, but direct UV exposure should be avoided.*

**Nalgene Lab Quality Amber Narrow-Mouth Bottles**

Cat. No.	Capacity, mL (oz.)	Closure Size, mm	Neck I.D., mm	O.D., mm	Height with Closure, mm	No. per Pack	No. per Case
2004-9125	4 (1/8)	13	8	16	41	12	72
2004-9025	8 (1/4)	20	14	25	45	12	72
2004-9050	15 (1/2)	20	14	25	58	12	72
2004-0001	30 (1)	20	14	34	61	12	72
2004-0002	60 (2)	20	14	37	85	12	72
2004-0004	125 (4)	24	18	50	101	12	72
2004-0008	250 (8)	24	18	61	133	12	72
2004-0016	500 (16)	28	21	73	170	12	48
2004-0032	1000 (32)	38-430	27	91	216	6	24

## ► Thermo Scientific Nalgene Amber Narrow-Mouth Economy Bottles

amber high-density polyethylene



**Nalgene™ Amber Narrow-Mouth Bottles** are lightweight versions of the original Nalgene Amber Lab Quality bottle, suitable for light-duty, general purpose applications where a heavier bottle is not required.

Opaque Amber HDPE bottles reduce UV light transmissions to protect light-sensitive liquids. Useful for storage, shipping and packaging. Guaranteed leakproof†.

### details

- Opaque Amber reduces UV light transmissions to protect light-sensitive liquids
- Excellent chemical resistance to most acids, bases and alcohols make these versatile bottles useful where exposure to light needs to be restricted
- Suitable for light-duty, general purpose applications where a heavier bottle is not required
- Economical and recyclable; designed for single use
- Can be used in freezer to -100°C (-148°F) for long-term storage
- Linerless caps provide the ultimate in leakproof protection without the use of liner that can wrinkle, cause leaks, or contaminate your reagents
- Leakproof†

**Includes:** Amber polypropylene screw closures.

**Compliance:** Product meets the requirements for light-resistant containers per USP latest edition.

*Notes: Nalgene LDPE, HDPE, PP and PMP containers can be used for long-term storage, but direct UV exposure should be avoided.*

### Nalgene Amber Narrow-Mouth Economy Bottles

Cat. No.	Capacity, mL (oz.)	Closure Size, mm	Neck I.D., mm	O.D., mm	Height with Closure, mm	No. per Pack	No. per Case
DS2085-0001	30 (1)	20	14	34	61	72	72
DS2085-0002	60 (2)	20	14	37	86	72	72
DS2085-0004	125 (4)	24	18	50	101	72	72
DS2085-0008	250 (8)	24	18	61	133	72	72
DS2085-0016	500 (16)	28	21	73	170	48	48
DS2085-0032	1000 (32)	38-430	27	91	216	24	24

► **Thermo Scientific Nalgene Large Amber Narrow-Mouth Bottles**  
 amber polypropylene copolymer



**Nalgene™ Amber Narrow-Mouth reduce UV light transmissions to protect light-sensitive liquids.**

Useful for storing chemicals and standards, collecting and storing distilled water. Amber color reduces exposure to UV light.

**details**

- Opaque amber reduces UV light transmissions to protect light-sensitive liquids
- Excellent chemical resistance to most acids, bases and alcohols make these versatile bottles where exposure to light needs to be restricted
- 4 and 8 L sizes feature a built-in shoulder loop on larger sizes for attaching identification tag
- Linerless caps provide the ultimate in leakproof protection without the use of liner that can wrinkle, cause leaks, or contaminate your reagents
- Autoclavable/Leakproof†

**Includes:** Amber polypropylene screw closures, except for 8 L which includes a white PP closure with a TPE gasket.

**Compliance:** Product meets the requirements for light-resistant containers per USP latest edition.

*Notes: Completely disengage threads or remove cap before autoclaving. Nalgene LDPE, HDPE, PP and PMP containers can be used for long-term storage, but direct UV exposure should be avoided.*

**Nalgene Amber Narrow-Mouth Bottles**

Cat. No.	Capacity, L (gal.)	Closure Size, mm	Neck I.D., mm	O.D., mm	Height with Closure, mm	No. per Pack	No. per Case
2204-0005	2 (1/2)	38-430	25	121	249	1	6
2204-0010	4 (1)	38-430	25	152	333	1	6
2204-0020	8 (2)	53B	37	193	409	1	6



## ► Thermo Scientific Nalgene Narrow-Mouth Bottles

polypropylene copolymer, polypropylene screw closures



**Nalgene™ Narrow-Mouth Boston Round Bottles are ideal for lab applications requiring excellent chemical resistance and autoclaving with and without contents.**

Translucence provides good clarity for viewing contents. Autoclavable. Guaranteed leakproof†.

### details

- Provides excellent chemical resistance for a variety of lab applications
- Versatile – can autoclave with and without contents for repeated use in the lab
- Translucence provides good clarity for viewing contents
- Linerless caps provide the ultimate in leakproof protection without the use of liner that can wrinkle, cause leaks, or contaminate your reagents
- Autoclavable/Leakproof†

**Includes:** Polypropylene screw closures.

*Notes: Completely disengage threads or remove cap before autoclaving. Nalgene LDPE, HDPE, PP and PMP containers can be used for long-term storage, but direct UV exposure should be avoided.*

### Nalgene Autoclavable Narrow-Mouth Bottles

Cat. No.	Capacity, mL (oz.)	Closure Size, mm	Neck I.D., mm	O.D., mm	Height with Closure, mm	No. per Pack	No. per Case
2006-9125	4 (1/8)	13	8	16	41	12	72
2006-9025	8 (1/4)	20	14	25	45	12	72
2006-9050	15 (1/2)	20	14	25	58	12	72
2006-0001	30 (1)	20	14	34	61	12	72
2006-0002	60 (2)	20	14	37	85	12	72
2006-0004	125 (4)	24	18	50	101	12	72
2006-0008	250 (8)	24	18	61	133	12	72
2006-0016	500 (16)	28	21	73	170	12	48
2006-0032	1000 (32)	38-430	27	91	216	6	24

## ► Thermo Scientific Nalgene Narrow-Mouth Economy Bottles

polypropylene copolymer, polypropylene screw closure



**Nalgene™ Narrow-Mouth Economy Bottles are lightweight versions of the original Nalgene Lab Quality bottle, suitable for light-duty, general purpose applications where a heavier bottle is not required.**

Economically priced, these bottles are designed for single use. Guaranteed leakproof†.

### details

- Economical and recyclable; designed for single use
- Translucence allows easy viewing of liquid levels
- Linerless caps provide the ultimate in leakproof protection without the use of liner that can wrinkle, cause leaks, or contaminate your reagents
- Autoclavable/Leakproof†

**Includes:** Polypropylene screw closures.

*Notes: Completely disengage threads or remove cap before autoclaving.*

### Nalgene Narrow-Mouth Economy Bottles

Cat. No.	Capacity, mL (oz.)	Closure Size, mm	Neck I.D., mm	O.D., mm	Height with Closure, mm	No. per Pack	No. per Case
2087-0001	30 (1)	20	14	34	61	72	72
2087-0002	60 (2)	20	14	37	85	72	72
2087-0004	125 (4)	24	18	50	101	72	72
2087-0008	250 (8)	24	18	61	133	72	72
2087-0016	500 (16)	28	21	73	170	48	48
2087-0032	1000 (32)	38-430	27	91	216	24	24

## ► Thermo Scientific Nalgene Large Narrow-Mouth Bottles

polypropylene copolymer, polypropylene screw closure



**Nalgene™ Large Narrow-Mouth Bottles are excellent for storing corrosive chemicals and distilled water.**

These bottles are resistant to most acids, bases and alcohols and can be autoclaved repeatedly with or without contents.

### details

- 4 and 8 L feature a built-in shoulder loop on larger sizes for attaching identification tag
- Lighter weight than glass alternatives make for easy lifting
- Translucence allows easy viewing of liquid levels
- Linerless caps provide the ultimate in leakproof protection without the use of liner that can wrinkle, cause leaks, or contaminate your reagents
- Autoclavable/Leakproof†

**Includes:** Polypropylene screw closures. 8 L includes a white PP closure with a TPE gasket.

*Notes: Completely disengage threads or remove closure before autoclaving. Nalgene LDPE, HDPE, PP and PMP containers can be used for long-term storage, but direct UV exposure should be avoided.*

### Nalgene Large Narrow-Mouth Bottles

Cat. No.	Capacity, L (gal.)	Closure Size, mm	Neck I.D., mm	O.D., mm	Height with Closure, mm	No. per Pack	No. per Case
2203-0005	2 (1/2)	38-430	25	121	249	1	6
2203-0010	4 (1)	38-430	25	152	333	1	6
2203-0020	8 (2)	53B	37	193	409	1	6

► **Thermo Scientific Nalgene Large Narrow-Mouth Bottles**  
polycarbonate, polypropylene screw closure



**Nalgene™ Large Narrow-Mouth Bottles are window-clear with excellent impact resistance.**

Good for freezer use. Guaranteed leakproof†.

**details**

- Half-liter and liter sizes are good for smaller volume applications where contents need to be seen
- 2 L and 2.5 L sizes can be used as culture vessels for batch, suspension or nonattached roller culturing
- 4 L and 8 L sizes have built-in shoulder loops for attaching an identification tag
- Excellent impact resistance makes these bottles good for freezer use to -135°C (-211°F)
- Linerless caps provide the ultimate in leakproof protection without the use of liner that can wrinkle, cause leaks, or contaminate your reagents
- Autoclavable/Transparent/Leakproof†

**Includes:** Polypropylene screw closures. 8 L size includes a white PP closure with a TPE gasket.

*Notes: Before autoclaving, completely disengage threads or remove cap. Autoclave empty. Repeated autoclaving will shorten the bottle life.*

**Nalgene Narrow-Mouth Bottles**

Cat. No.	Capacity, L	Closure Size, mm	Neck I.D., mm	O.D., mm	Height with Closure, mm	No. per Pack	No. per Case
2205-0016	.5	38-430	27	82	180	4	24
2205-0032	1	38-430	27	99	221	4	24
DS2205-0210	2	38-430	25	121	249	1	1
DS2205-0250	2.5	38-430	25	121	295	1	1
DS2205-0010	4	38-430	25	152	333	1	1
DS2205-0020	8	53B	37	193	409	1	1

## ► Thermo Scientific Nalgene Wide-Mouth Rectangular Bottles

high-density polyethylene, polypropylene screw closure



**Nalgene™ Wide-Mouth Rectangular Bottles feature a space-saving rectangular design that takes up less shelf space than traditional round bottles.**

### details

- Excellent chemical resistance to most acids, bases and alcohols make these excellent containers to protect your valuable samples
- Rectangular shape makes it easy to fit in freezer for storage up to -100°C (-148°F)
- Linerless caps provide the ultimate in leakproof protection without the use of liner that can wrinkle, cause leaks, or contaminate your reagents
- A sturdy, uniform wall construction with straight sides and a wide mouth that are resistant to splitting or punctures
- Leakproof†

**Includes:** Polypropylene screw closures.

### Nalgene Wide-Mouth Rectangular Bottles

Cat. No.	Capacity, mL (oz.)	Closure Size, mm	Neck I.D., mm	O.D., mm	Height with Closure, mm	No. per Pack	No. per Case
2007-0004	125 (4)	28	21	61 x 38	102	12	72
2007-0008	250 (8)	38	28	76 x 51	117	12	72
2007-0016	500 (16)	48	37	94 x 60	147	12	48
2007-0032	1000 (32)	53	44	125 x 71	180	6	24
2007-0064	2000 (64)	63	51	152 x 84	242	4	12



## ► Thermo Scientific Nalgene Amber Wide-Mouth Rectangular Bottles

high-density polyethylene, amber polypropylene screw closure



**Nalgene™ Amber Wide-Mouth Rectangular Bottles help protect light-sensitive liquids or dry materials from exposure and take up less shelf space than traditional round bottles.**

### details

- Amber HDPE reduces UV light transmissions to protect light-sensitive liquids
- Rectangular shape is great for space-saving use in the freezer to -100°C (-148°F)
- Excellent chemical resistance to most acids, bases and alcohols make these excellent containers to protect your valuable samples
- Linerless caps provide the ultimate in leakproof protection without the use of liner that can wrinkle, cause leaks, or contaminate your reagents
- Leakproof†

**Includes:** Opaque amber polypropylene screw closures.

**Compliance:** Product meets the requirements for light-resistant containers per USP latest edition.

### Nalgene Amber Wide-Mouth Rectangular Bottles

Cat. No.	Capacity, mL (oz.)	Closure Size, mm	Neck I.D., mm	O.D., mm	Height with Closure, mm	No. per Pack	No. per Case
2009-0004	125 (4)	28	21	61 x 38	102	12	72
2009-0008	250 (8)	38	28	76 x 51	117	12	72
2009-0016	500 (16)	48	37	94 x 60	147	12	48
2009-0032	1000 (32)	53	44	125 x 71	180	6	24
2009-0064	2000 (64)	63	51	152x84	242	4	12

► **Thermo Scientific Nalgene Narrow-Mouth Square Bottles**  
polycarbonate, polypropylene screw closure



**Nalgene™ Narrow-Mouth Square Bottles are durable and autoclavable, and feature an easy-to-handle square design.**

Ideal for storage of aqueous solutions and short-term storage of media.

**details**

- This product can be autoclaved in your lab for repeated sterilization and decontamination – autoclave only when empty.
- Square sides allow for good use of space in the freezer to -135°C (-275°F)
- Excellent clarity make these bottles ideal for general purpose storage of aqueous solutions and short-term storage of media
- 2 L size has molded-in handgrips to aid in lifting and pouring contents
- Molded-in graduations for ease in dispensing
- Linerless caps provide the ultimate in leakproof protection without the use of liner that can wrinkle, cause leaks, or contaminate your reagents
- Guaranteed leakproof†
- Autoclavable/Transparent/Graduated

**Includes:** Leakproof† polypropylene screw closures.

*Notes: Remove cap or completely disengage threads before autoclaving. Autoclave empty. Repeated autoclaving will shorten bottle life.*

**Nalgene Narrow-Mouth Square Bottles**

Cat. No.	Capacity, mL (oz.)	Closure Size, mm	Neck I.D., mm	O.D., mm <sup>2</sup>	Height with Closure, mm	No. per Pack	No. per Case
2015-0030	30 (1)	20	14	38	64	12	96
2015-0060	60 (2)	24	18	41	83	12	96
2015-0125	125 (4)	38-430	28	53	109	6	48
2015-0250	250 (8)	38-430	28	61	146	6	48
2015-0500	500 (16)	38-430	28	74	178	4	24
2015-1000	1000 (32)	38-430	28	92	218	4	24
2015-2000	2000 (64)	53B	39	116	271	1	6

► **Thermo Scientific Nalgene Square Bottles**  
polypropylene copolymer with polypropylene closures



**Nalgene™ Square Bottles are graduated, repeatedly autoclavable; resistant to alcohols and bases, and is translucent.**

Space-saving square bottles are have well-proportioned mouths for easy measuring and dispensing.

**details**

- Square sides allow for good use of space and an easy grip
- Graduated for ease of dispensing
- Linerless caps provide the ultimate in leakproof<sup>†</sup> protection without the use of liner that can wrinkle, cause leaks, or contaminate your reagents
- Translucent bottles provide visible liquid level
- Useful between 0° and 135°C (32° and 275°F)
- Autoclavable/Leakproof<sup>†</sup>

**Includes:** Leakproof<sup>†</sup> polypropylene screw closures.

*Notes: Remove cap or completely disengage threads before autoclaving.*

**Nalgene Narrow-Mouth Square Bottles**

Cat. No.	Capacity, mL (oz.)	Closure Size, mm	Neck I.D., mm	O.D. <sup>2</sup> , mm	Height with Closure, mm	No. per Pack	No. per Case
2016-0030	30 (1)	20	14	38	64	12	72
2016-0060	60 (2)	24	18	41	83	12	72
2016-0125	125 (4)	38-430	28	53	109	12	72
2016-0250	250 (8)	38-430	28	61	146	12	72
2016-0500	500 (16)	38-430	28	74	178	12	48
2016-1000	1000 (32)	38-430	28	92	218	6	24

## ► Thermo Scientific Nalgene Narrow-Mouth Square Bottles

high-density polyethylene, polypropylene screw closure



**Nalgene™ Narrow-Mouth Square Bottles are the most chemically and break resistant of all Nalgene square bottles, yet are economically priced for a wide range of lab uses.**

### details

- Square sides allow for good use of space and an easy grip
- Linerless caps provide the ultimate in leakproof protection without the use of liner that can wrinkle, cause leaks, or contaminate your reagents
- Graduated for ease of dispensing
- Can be used to -100°C (-148°F)
- Most chemical- and break-resistant of all Nalgene square bottles, yet economically priced for a wide range of lab uses
- Leakproof<sup>†</sup>/Graduated

**Includes:** Leakproof polypropylene screw closures.

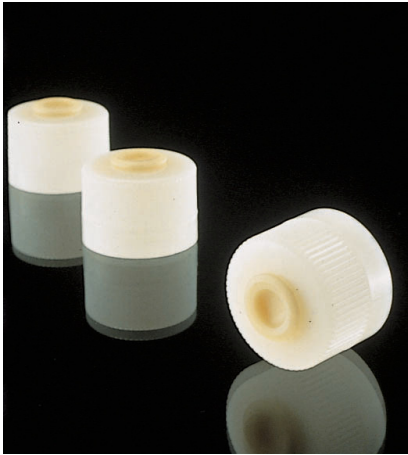
*Notes: Nalgene LDPE, HDPE, PP and PMP containers can be used for long-term storage, but direct UV exposure should be avoided.*

### Nalgene Narrow-Mouth Square Bottles

Cat. No.	Capacity, mL (oz.)	Closure Size, mm	Neck I.D., mm	O.D., mm <sup>2</sup>	Height with Closure, mm	No. per Pack	No. per Case
2018-0030	30 (1)	20	14	38	64	12	72
2018-0060	60 (2)	24	18	41	83	12	72
2018-0125	125 (4)	38-430	28	53	109	12	72
2018-0250	250 (8)	38-430	28	61	146	12	72
2018-0500	500 (16)	38-430	28	74	178	12	48
2018-1000	1000 (32)	38-430	28	92	218	6	24



► **Thermo Scientific Nalgene Autoclavable Septum Closures**  
polypropylene closure, thermoplastic elastomer septum



**Nalgene™ Autoclavable Septum Closures allow aseptic injection of reagent or sample withdrawal without compromising sterility or integrity of contents.**

Suitable for use with any bottle or container with 38-430 neck, including Nalgene culture vessels.

**details**

- Use with 18-gauge or smaller needles for aseptic injection of reagent or sample withdrawal without compromising sterility or integrity of contents
- Fits Nalgene bottles with 38-430 threaded mouth
- Autoclavable

*Notes: For laboratory use only; not for in vitro diagnosis or parenterals.*

**Nalgene Autoclavable Septum Closure**

Cat. No.	Description	Closure Size, mm	No. per Case
DS2168-0384	Autoclavable Septum Closures	38-430	12





## ► Thermo Scientific Nalgene Wide-Mouth Square Bottles

polypropylene copolymer, polypropylene screw closures



**Nalgene™ Wide-Mouth Square Bottles feature a wide-mouth design for easy cleaning, sample filling and retrieval.**

Save valuable lab space with a square design. Repeatedly autoclavable.

### details

Resistant to acids, alcohols and bases

- Contact-clear bottle provides visible liquid level
- Square design allows good use of space and provides a large area for labeling
- Linerless caps provide the ultimate in leakproof protection without the use of liner that can wrinkle, cause leaks, or contaminate your reagents
- Autoclavable/Leakproof†

**Includes:** Polypropylene screw closures.

*Notes: Completely disengage threads or remove cap before autoclaving.*

### Nalgene Wide-Mouth Square Bottles

Cat. No.	Capacity, mL (oz.)	Closure Size, mm	Neck I.D., mm	O.D., mm <sup>2</sup>	Height with Closure, mm	No. per Pack	No. per Case
2110-0002	60 (2)	28	21	36	83	12	72
2110-0006	175 (6)	38	28	51	102	12	72
2110-0008	250 (8)	43	33	61	116	12	72
2110-0016	500 (16)	53	43	74	146	12	48
2110-0032	1000 (32)	63	53	95	181	6	24

## ► Thermo Scientific Nalgene Large Wide-Mouth Square Bottle

polypropylene copolymer, polypropylene screw closures



**Nalgene™ Large Wide-Mouth Square Bottles** are ideal for autoclaving and storing contaminated slides and other small lab equipment. Excellent for collecting, storing and transporting dry chemicals and environmental samples.

Space-saving design features molded-in handgrips for greater convenience and safety when pouring.

### details

- Ideal for storing contaminated slides and other small lab equipment
- Space-saving bottle design features molded-in handgrips for greater convenience and safety when pouring
- Wide mouth makes it excellent for collecting, storing and transporting dry chemicals and environmental samples
- Autoclavable

**Includes:** Polypropylene screw closures.

*Notes: Completely disengage threads or remove cap before autoclaving. This bottle is not liquid leakproof.*

### Nalgene Large Wide-Mouth Square Bottle

Cat. No.	Capacity, L (gal.)	Closure Size, mm	Neck I.D., mm	O.D., mm <sup>2</sup>	Height with Closure, mm	No. per Pack	No. per Case
2122-0010	4 (1)	100	89	142	282	1	6

### ► Select the perfect container for your application.

Go to: [www.thermoscientific.com/nalgenecontainers](http://www.thermoscientific.com/nalgenecontainers) or download our free apps from iTunes or the Android market – search *Nalgene Bottles*.

## ► Thermo Scientific Nalgene Wide-Mouth Square Bottles

high-density polyethylene, polypropylene screw closures



**Nalgene™ Wide-Mouth Square Bottles feature durable, uniform walls resistant to splitting or puncturing.**

Easy-to-grip bottles save valuable storage space.

### details

- Wide mouth is easy to fill
- Space-saving bottle design saves space in freezer – store samples to -100°C (-148°F)
- HDPE exhibits excellent chemical resistance to most acids, bases and alcohols making these bottles suitable for a wide variety of uses
- Linerless caps provide the ultimate in leakproof protection without the use of liner that can wrinkle, cause leaks, or contaminate your reagents
- Leakproof†

**Includes:** Polypropylene screw closure.

### Nalgene Wide-Mouth Square Bottle

Cat. No.	Capacity, mL (oz.)	Closure Size, mm	Neck I.D.	O.D., mm <sup>2</sup>	Height With Closure	No. per Pack	No. per Case
2114-0002	60 (2)	28	21	36	83	12	72
2114-0006	175 (6)	38	28	51	106	12	72
2114-0008	250 (8)	43	33	61	116	12	72
2114-0016	500 (16)	53	43	74	146	12	48
2114-0032	1000 (32)	63	53	95	181	6	24

## ► Thermo Scientific Nalgene Large Wide-Mouth Square Bottle

high-density polyethylene, white polypropylene screw closures



**Nalgene™ Large Wide-Mouth Square Bottles feature molded-in handgrips that provide greater convenience and safety when pouring.**

Excellent for collecting, storing and transporting dry chemicals and environmental samples.

### details

- Wide mouth allows easy access to contents
- Space-saving bottle features convenient, molded-in handgrips for greater convenience and safety when pouring
- Excellent chemical resistance to most acids, bases and alcohols making these bottles suitable for storing and transporting dry chemicals, environmental samples, reagents and distilled water
- Space-saving bottle design saves space in freezer – store samples to -100°C (-148°F)

*Notes: This bottle is not liquid leakproof.*

### Nalgene Large Wide-Mouth Square Bottle

Cat. No.	Capacity, L (gal.)	Closure Size, mm	Neck I.D., mm	O.D., mm <sup>2</sup>	Height with Closure, mm	No. per Pack	No. per Case
2123-0010	4 (1)	100	89	142	292	1	6

► **Thermo Scientific Nalgene Dilution Bottles**  
polypropylene copolymer, polypropylene screw closure



**Nalgene™ PPCO Dilution Bottles offer excellent chemical resistance to strong acids, alcohols and bases. Bottles are contact-clear so that liquid levels are easy to read.**

**details**

- Excellent chemical resistance to strong acids, alcohols and bases – ideal for use with a wide variety of solutions
- Useful for a wide range of temperatures -40°C (-40°F) to +121°C (250°F)
- Translucent, so you can read graduations at both 90 mL (for 0.1 dilutions) and 99 mL (for 0.01 dilutions) accurate to ±0.4 mL
- Withstands repeated washing and autoclaving with Tween
- Autoclavable/Leakproof†

**Includes:** Polypropylene screw closure.

*Notes: Completely disengage threads or remove cap before autoclaving.*

**Nalgene Dilution Bottles**

Cat. No.	Capacity to Brim, mL	Capacity to Neck, mL	Closure Size, mm	No. per Pack	No. per Case
2500-0280	210	200	28	12	48
2500-0380	220	205	38	12	48

► **Thermo Scientific Nalgene Dilution Bottles**  
Polysulfone, polypropylene screw closure



**Nalgene™ Polysulfone Dilution Bottles are our clearest and most accurate dilution bottles.**

**details**

- Excellent chemical resistance to bases and weak acids – ideal for use with food products
- Useful for a wide range of temperatures -100°C (148°F) to +165°C (329°F)
- Transparent, so its easy to read graduations at both 90 mL (for 0.1 dilutions) and 99 mL (for 0.01 dilutions) accurate to ±0.1 mL
- Autoclaving when used with Tween will reduce the life of this dilution bottle
- Autoclavable/Transparent/Leakproof†

**Includes:** Polypropylene screw closure.

*Notes: Completely disengage threads or remove cap before autoclaving.*

**Nalgene Dilution Bottles**

Cat. No.	Capacity to Brim, mL	Capacity to Neck, mL	Closure Size, mm	No. per Pack	No. per Case
2505-0280	210	200	28	12	48
2505-0380	220	205	38	12	48

## ► Thermo Scientific Nalgene Narrow-Mouth Passport IP2 Bottles

high-density polyethylene, polypropylene screw closure



Excellent for small-scale inter-lab shipping of hazardous samples and chemicals such as corrosives and cleaning compounds.

### details

- Recommended for customers designing, certifying or assembling their own combination packaging
- Heavy-duty walls resist splitting and puncturing
- Markings molded into bottom of bottles: IP2 marking, material, volume, registration notch
- Evaluated at 15 psi (103 kPa) per 49 CFR 173.27 (c)(2), ICAO Technical Instructions Part 4; 1.1.6, and IATA Dangerous Goods Regulations Section 5.0.2.9
- Leakproof†

**Includes:** Polypropylene screw closures.

**Compliance:** Meets IATA Dangerous goods Regulations Section 5.0.2.9.

### Nalgene™ Narrow-Mouth Passport IP2 Bottles

Cat. No.	Capacity, mL	No. per Pack	No. per Case
2099-0001	30	12	72
2099-0002	60	12	72
2099-0004	125	12	72
2099-0008	250	12	72

## ► Thermo Scientific Nalgene Wide-Mouth Passport IP2 Bottles

high-density polyethylene, polypropylene screw closure



Safe, durable cost-effective line of wide-mouth bottles for packaging and transporting hazardous samples and chemicals such as corrosives and cleaning compounds

### details

- Wide-mouth for easy filling with fluids or powders
- Recommended for customers designing, certifying or assembling their own combination packaging
- Heavy-duty walls resist splitting and puncturing
- Markings molded into bottom of bottles: IP2 marking, material, volume, registration notch
- Evaluated at 15 psi (103 kPa) per 49 CFR 173.27 (c)(2), ICAO Technical Instructions Part 4; 1.1.6, and IATA Dangerous Goods Regulations Section 5.0.2.9
- Leakproof†

**Includes:** Polypropylene screw closures.

**Compliance:** Meets IATA Dangerous goods Regulations Section 5.0.2.9.

Cat. No.	Capacity, mL	No. per Pack	No. per Case
2199-0004	125	12	72
2199-0008	250	12	72
2199-0016	500	12	48
2199-0032	1000	6	24



## ► Thermo Scientific Nalgene Low Particulate/Low Metals Bottles

low-density polyethylene, polypropylene closure



**Nalgene™ Low Particulate/Low Metals Bottles feature a narrow mouth and certification to contain less than 20 particles per mL at 0.3 microns and greater.**

Metals certified to micrograms per liter (ppb) levels. Each bottle is double bagged under Class 10 laminar flow hoods inside a Class 100 clean room. Excellent for ICP-MS reagent and standard storage. Product includes a certificate of quality that assures the product has been tested and accepted in accordance with specifications.

### details

- Certified to particulate and trace metals levels
- Linerless caps provide the ultimate in leakproof protection without the use of liner that can wrinkle, cause leaks, or contaminate your reagents
- Exhibits flexibility, impact resistance and excellent visibility of contents for a wide variety of uses in the lab
- Excellent chemical resistance to most acids, bases and alcohols make this a versatile bottle
- Metals certified to microliter (ppb) levels <0.20Hg, <0.5 Be, <1.0 As, Cd, Pb, <2.0 Sb, Se, <5.0 Ag, Co, Cr, Cu, Mn, Ti, V, <10 Ba, Ni, Zn, <50 Mg, <75 Al, <100 Ca, Fe, K, Na.
- Translucent/Leakproof†

**Includes:** Polypropylene screw closure.

### Nalgene Low Particulate/Low Metals Bottles

Cat. No.	Capacity, mL (oz)	Closure Size, mm	Neck I.D., mm	O.D., mm	Height with Closure, mm	No. per Pack	No. per Case
382003-0004	125 (4)	24	18	50	101	1	72
382003-0008	250 (8)	24	18	61	133	1	72
382003-0016	500 (16)	28	21	73	170	1	48
382003-0032	1000 (32)	38-430	27	91	216	1	24

## ► Thermo Scientific Nalgene Low Particulate/Low Metals Bottles

Teflon® FEP, Tefzel™ ETFE closure



**Nalgene™ Low Particulate/Low Metals Teflon® FEP Bottles feature a narrow mouth and certification to contain less than 20 particles per mL at 0.3 µm and greater**

Metals certified to micrograms per liter (ppb) levels. Each bottle is double bagged under Class 10 laminar flow hoods inside a Class 100 clean room. Excellent for storing high purity chemicals. Product includes a certificate of quality that assures the product has been tested and accepted in accordance with specifications.

### details

- Certified to particulate and trace metals levels
- Linerless caps provide the ultimate in leakproof<sup>†</sup> protection without the use of liner that can wrinkle, cause leaks, or contaminate your reagents
- Exhibits flexibility, impact resistance and excellent visibility of contents for a wide variety of uses in the lab
- Excellent chemical resistance almost any lab chemical
- Non-sterile
- Metals certified to microliter (ppb) levels <0.20Hg, <0.5 Be, <1.0 As, Cd, Pb, <2.0 Sb, Se, <5.0 Ag, Co, Cr, Cu, Mn, Tl, V, <10 Ba, Ni, Zn, <50 Mg, <75 Al, <100 Ca, Fe, K, Na.
- Autoclavable/Translucent/Leakproof<sup>†</sup>

**Includes:** ETFE screw closure.

*Notes: Completely disengage threads or remove cap before autoclaving.*

Teflon® is a registered trademark of DuPont used under license by Nalge Nunc International Corporation.

### Nalgene Low Particulate/Low Metals Bottles

Cat. No.	Capacity, mL (oz.)	Closure Size, mm	Neck I.D., mm	O.D., mm	Height with Closure, mm	No. per Pack	No. per Case
381600-0004	125 (4)	24	17	46	115	1	6
381600-0008	250 (8)	24	17	60	134	1	4
381600-0016	500 (16)	28	20	73	166	1	4
381600-0032	1000 (32)	38	26	90	203	1	4

## ► Thermo Scientific Nalgene Narrow-Mouth Bottles

Teflon® FEP, Tefzel™ ETFE closure



**Nalgene™ FEP Narrow-Mouth Bottles are the most inert, chemical-resistant, corrosion-resistant containers available.**

Outstanding resistance to virtually all chemicals and extreme temperatures. Ideal for trace metal analysis and applications involving organic solvents. Can be rigorously cleaned in boiling nitric acid. Guaranteed leakproof†.

### details

- Most inert, chemical-resistant, corrosion-resistant containers available – ideal for trace metal analysis and applications involving organic solvents
- Can withstand rigorous cleaning in boiling nitric acid – temperature range from -105°C (-157°F) to +150°C (+302°F) for a wide range of uses including high-purity storage. Can be autoclaved for sterilization
- Autoclavable/Leakproof†/Transparent/Teflon® FEP

**Includes:** ETFE screw closure.

*Notes: These bottles cannot withstand gamma irradiation. Completely disengage threads or remove cap before autoclaving.*

Teflon® is a registered trademark of DuPont used under license by Nalge Nunc International Corporation.

### Nalgene Narrow-Mouth Bottles

Cat. No.	Capacity, mL (oz.)	Closure Size, mm	Neck I.D., mm	O.D., mm	Height with Closure, mm	No. per Pack	No. per Case
1600-0001	30 (1)	20	14	32	75	1	8
1600-0002	60 (2)	20	14	39	84	1	8
1600-0004	125 (4)	24	17	46	115	1	6
1600-0008	250 (8)	24	17	60	134	1	4
1600-0016	500 (16)	28	20	73	166	1	4
1600-0032	1000 (32)	38	26	90	203	1	4
1600-0064	2000 (64)	38-430	24	121	245	1	2

## ► Thermo Scientific Nalgene Narrow-Mouth Bottles

Teflon® PFA, Teflon® PFA screw closure screw closure



**Nalgene™ Narrow-Mouth Bottles, Teflon® PFA; Teflon® PFA screw closure**  
**Thermo Scientific Nalgene PFA Narrow-Mouth Bottles are the most temperature resistance, inert, chemical-resistant, corrosion-resistant containers available.**

Outstanding resistance to virtually all chemicals and extreme temperatures. Ideal for trace metal analysis and applications involving organic solvents. Can be rigorously cleaned in boiling nitric acid. Guaranteed leakproof†.

### details

- Withstand -270° to +250°C (-454° to +482°F)
- Inert to virtually all chemicals except molten alkali metals, fluorine at high temperatures, and complex halogenated compounds at high temperatures and pressures
- Packaged individually
- Autoclavable
- Leakproof† PFA closure

**Includes:** Leakproof†, linerless PFA screw closures.

*Notes: These bottles cannot withstand gamma irradiation. Completely disengage threads or remove cap before autoclaving.*

Teflon® is a registered trademark of DuPont used under license by Nalge Nunc International Corporation.

### Nalgene Narrow-Mouth Bottles

Cat. No.	Capacity, mL (oz.)	Closure Size, mm	Neck I.D., mm	O.D, mm	Height with Closure, mm	No. per Pack	No. per Case
DS1630-0001	30 (1)	20	14	32	75	1	8
DS1630-0002	60 (2)	20	14	39	84	1	8
1630-0004	125 (4)	38-430	24	46	127	1	6
1630-0008	250 (8)	38-430	24	59	146	1	4
1630-0016	500 (16)	38-430	24	72	181	1	4
1630-0032	1000 (32)	38-430	24	90	216	1	4

## ► Thermo Scientific Nalgene Wide-Mouth Bottles

Teflon® FEP, Tefzel™ ETFE closure



**Nalgene™ FEP Bottles with ETFE closures provide excellent temperature and chemical resistance.**

Outstanding resistance to virtually all chemicals and extreme temperatures. Ideal for trace metal analysis and applications involving organic solvents. Can be rigorously cleaned in boiling nitric acid. Guaranteed leakproof†.

### details

- Most inert, chemical-resistant, corrosion-resistant containers available – ideal for trace metal analysis and applications involving organic solvents
- Can withstand rigorous cleaning in boiling nitric acid – temperature range from -105°C (-157°F) to +150°C (+302°F) for a wide range of uses including high-purity storage. Can be autoclaved for sterilization
- Wide-mouth for easy filling
- Autoclavable/Leakproof†/Transparent/Teflon® FEP

**Includes:** ETFE screw closure.

*Notes: These bottles cannot withstand gamma irradiation. Completely disengage threads or remove cap before autoclaving.*

Teflon® is a registered trademark of DuPont used under license by Nalge Nunc International Corporation.

### Nalgene Wide-Mouth Bottles

Cat. No.	Capacity, mL (oz.)	Closure Size, mm	Neck I.D., mm	O.D., mm	Height with Closure, mm	No. per Pack	No. per Case
2100-0004	125 (4)	33	25	46	117	1	6
2100-0008	250 (8)	43	33	59	128	1	4
2100-0016	500 (16)	48	38	71	165	1	4
2100-0032	1000 (32)	53	43	91	209	1	4



## ► Thermo Scientific Nalgene Wide-Mouth EP Tox/TCLP Bottle

Teflon® FEP, Teflon® PFA lined white polypropylene closure



**Nalgene™ Wide-Mouth EP Tox Bottles are ideal to use at high and low temperatures for trace metal analysis and applications with organic solvents.**

Offers laboratory a safer alternative to glass.

### details

- 2.2 L temperature-resistant PTFE resin FEP bottle has wide mouth for testing large-sized samples
- PTFE resin-lined polypropylene caps included
- Specially designed for U.S. EPA Method 1311: Toxicity Characteristic Leaching Program (TCLP)
- Autoclavable/Leakproof†

**Includes:** Polypropylene screw closure with PFA lining.

*Notes: This bottle cannot withstand gamma irradiation. Completely disengage threads before autoclaving.*

Teflon® is a registered trademark of DuPont used under license by Nalge Nunc International Corporation.

### Nalgene Wide-Mouth EP Tox/TCLP Bottle

Cat. No.	Capacity, L	Closure Size, mm	Neck I.D., mm	O.D., mm	Height with Closure, mm	No. per Pack	No. per Case
2101-2200	2.2	100	89	119	241	1	2

► **Thermo Scientific Nalgene Fluorinated Narrow-Mouth Bottles**  
 fluorinated high-density polyethylene; fluorinated polypropylene screw closure



**Nalgene™ Narrow-Mouth Fluorinated bottles are fluorinated inside and out for improved barrier properties and reduced solvent absorption and permeation.**

Fluorination enhances long-term container performance, prevents permeation loss and yields lower extractables. Provides a cost-effective alternative to costly fluoropolymer containers. Guaranteed leakproof†.

**details**

- Fluorinated to enhance long-term performance and prevent solvent permeation loss
- Constructed with heavy-duty walls that are safe, durable and resistant to splitting and punctures
- Leakproof†

**Includes:** fluorinated polypropylene screw closures.

**Nalgene Fluorinated Narrow-Mouth Bottles**

Cat. No.	Capacity, mL (oz.)	Closure Size, mm	Neck I.D., mm	O.D., mm	Height with Closure, mm	No. per Pack	No. per Case
2097-0008	250 (8)	24	18	61	133	12	72
2097-0016	500 (16)	28	21	73	170	12	48
2097-0032	1000 (32)	38-430	27	91	216	6	24
2097-0005	2000 (67)	38-430	27	120	250	1	6
2097-0010	4000 (135)	38-430	26	153	334	1	6

► **Select the perfect container for your application.**

Go to: [www.thermoscientific.com/nalgenecontainers](http://www.thermoscientific.com/nalgenecontainers)  
 or download our free apps from iTunes or the Android market  
 – search *Nalgene Bottles*.

## ► Thermo Scientific Nalgene Fluorinated Wide-Mouth Bottles

fluorinated high-density polyethylene, fluorinated polypropylene screw closure



**Nalgene™ Fluorinated Wide-Mouth bottles are fluorinated inside and out for improved barrier properties and reduced solvent absorption and permeation.**

Fluorination enhances long-term container performance, prevents permeation loss and yields lower extractables. Provides a cost-effective alternative to costly fluoropolymer containers. Wide-mouth allows easy access. Guaranteed leakproof†.

### details

- Fluorinated to enhance long-term performance and prevent solvent permeation loss
- Constructed with heavy-duty walls that are safe, durable and resistant to splitting and punctures
- Leakproof†

**Includes:** fluorinated polypropylene screw closures.

#### Nalgene Fluorinated Wide-Mouth Bottles

Cat. No.	Capacity, mL (oz.)	Closure Size, mm	Neck I.D., mm	O.D., mm	Height with Closure, mm	No. per Pack	No. per Case
2197-0004	125 (4)	38	28	50	99	12	72
2197-0008	250 (8)	43	33	61	131	12	72
2197-0016	500 (16)	53	44	73	168	12	48
2197-0032	1000 (32)	63	53	91	199	6	24

## ► Thermo Scientific Nalgene Fluorinated Large Wide-Mouth Bottle

fluorinated high-density polyethylene, fluorinated polypropylene screw closure



**Nalgene™ bottle with Fluorinated Surface enhances long-term performance and prevents permeation loss.**

Fluorinating these HDPE bottles provides a cost-effective alternative to costly fluoropolymer containers.

Enhances long-term performance and prevents permeation loss.

### details

- Fluorinated to enhance long-term performance and prevent solvent permeation loss
- Wide mouth allows access
- Yields lower extractables than other bottles

**Includes:** fluorinated polypropylene screw closures.

*Notes: This bottle is not liquid leakproof.*

#### Nalgene Fluorinated Large Wide-Mouth Bottle

Cat. No.	Capacity, L	Closure Size, mm	Neck I.D., mm	O.D., mm	Height with Closure, mm	No. per Pack	No. per Case
2124-0005	2.2	100	89	119	244	1	6

► **Thermo Scientific Nalgene Pour Spout**  
polypropylene, polyethylene insert



**Nalgene™ pour spout is made to fit all Nalgene bottles with 38-430 neck finish. Vented to allow smooth flow for easy liquid dispensing.**

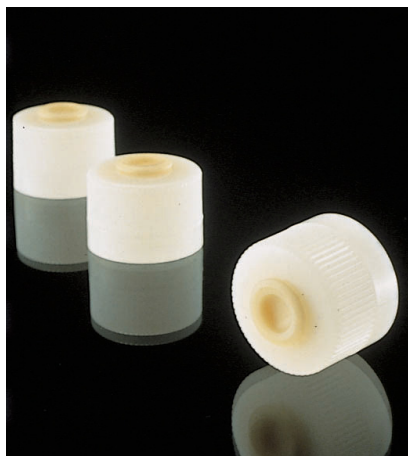
**details**

- Used for all Nalgene bottles with 38-430 neck finish
- Allows easy one-handed liquid dispensing without leaving bottles completely open to the environment

**Nalgene Pour Spout**

Cat. No.	Description	Closure Size, mm	No. per Case
DS2176-0384	Pour Spout	38-430	6

► **Thermo Scientific Nalgene Autoclavable Septum Closures**  
polypropylene closure, thermoplastic elastomer septum



**Nalgene™ Autoclavable Septum Closures allow aseptic injection of reagent or sample withdrawal without compromising sterility or integrity of contents.**

Suitable for use with any bottle or container with 38-430 neck, including Nalgene culture vessels.

**details**

- Use with 18-gauge or smaller needles for aseptic injection of reagent or sample withdrawal without compromising sterility or integrity of contents
- Fits Nalgene bottles with 38-430 threaded mouth
- Autoclavable

*Note: For laboratory use only; not for in vitro diagnosis or parenterals.*

**Nalgene Autoclavable Septum Closure**

Cat. No.	Description	Closure Size, mm	No. per Case
DS2168-0384	Autoclavable Septum Closures	38-430	12



Thermo Scientific Products –  
meeting the challenges of science and industry



# Nalgene™ Bottles and Carboy Selection Guide

**Thermo Scientific** HALGENE™

Thermo Scientific Nalgene Bottle, Carboy and Vial Selection Guide

It's easy to take for granted the containers you entrust with your valuable samples and solutions. But not all bottles are created equal. Nalgene is the #1 choice, with more than 3,000,000 safely at work in laboratories around the world. This guide will help you to select a container matching your needs. Enter your criteria and see the range of Thermo Scientific Nalgene bottles that match your criteria.

Found 673 bottles matching your criteria - scroll down to view the results.

Chemical Compatibility:  Storage Time:  Material/Resin:

Container Contents:  Volume:  mL

Application Temperature Range:  Max. temp. (degrees centigrade):  Ambient room temperature:  Shape:

Certifications:  Any  Yes  No

Low Particulate:  Any  Yes  No

ADC Free:  Any  Yes  No

Non-pyrogenic:  Any  Yes  No

Non-cytotoxic:  Any  Yes  No

Low metals:  Any  Yes  No

Air shipment:  Any  Yes  No

Standard Quality Certificate:  Any  Yes  No

Search Catalog Number:  Cat. No.

Cat. No.	Description	Nominal Volume	Material	Dimension
1600-0001	Narrow-Mouth Bottle FEP	30 mL	FEP	32 x 39 x 100
1600-0002	Narrow-Mouth Bottle FEP	60 mL	FEP	39 x 46 x 100
1600-0004	Narrow-Mouth Bottle FEP	125 mL	FEP	46 x 59 x 100
1600-0008	Narrow-Mouth Bottle FEP	250 mL	FEP	60 x 72 x 100
1600-0016	Narrow-Mouth Bottle FEP	500 mL	FEP	72 x 90 x 100
1600-0032	Narrow-Mouth Bottle FEP	1000 mL	FEP	90 x 121 x 100
1600-0064	Narrow-Mouth Bottle PFA	2000 mL	PFA	121 x 152 x 100
1630-0004	Narrow-Mouth Bottle PFA	125 mL	PFA	46 x 59 x 100
1630-0008	Narrow-Mouth Bottle PFA	250 mL	PFA	59 x 72 x 100
1630-0016	Narrow-Mouth Bottle PFA	500 mL	PFA	72 x 90 x 100
1630-0032	Narrow-Mouth Bottle PFA	1000 mL	PFA	90 x 121 x 100

Thermo Scientific Nalgene Lab

resources to use

1. Request a quote
2. Request a sample
3. Request a quote
4. Request a sample
5. Request a quote
6. Request a sample
7. Request a quote
8. Request a sample
9. Request a quote
10. Request a sample

Get the guide on USB or request a sample kit

Thermo Scientific Nalgene bottles and carboys set the standard for quality and superior performance, protecting your valuable liquids. So exceptional, they come with a leakproof guarantee. So trusted, millions are used in laboratories around the world.

See how easy it is to choose the best bottles, carboys and vials for your applications.

Visit the Nalgene Bottle and Carboy Selection Guide by using the QR code below or online at

[www.thermoscientific.com/nalgenecontainers](http://www.thermoscientific.com/nalgenecontainers)

– or get the app at the iTunes store or Android Market.





► **Thermo Scientific Nalgene Narrow-Mouth and Wide-Mouth Bottle Replacement Closures**



**details**

- Made to fit Nalgene Narrow-Mouth and Wide-Mouth Bottles

**Nalgene Bottle Replacement Closures**

Cat. No.	Closure Size, mm	Description	No. per Pack	No. per Case
712150-0240	24	PP	12	12
712150-0280	28	PP	12	12
712150-0430	43	PP	12	12
712150-0530	53	PP	12	12
712150-0630	63	PP	12	12
712150-1000	100	White PP	12	12
712151-0200	20	HDPE	12	12
712151-0380	38	HDPE	12	12
712160-0384	38-430	PP	12	12
712171-0530	53	Amber PP	12	12
712172-0020	20	PFA	2	12
712174-0530	53	ETFE	2	12

## ► Thermo Scientific Nalgene Graduated Bucket

high-density polyethylene



**Nalgene™ Buckets feature a wide-lipped pour spout and polyethylene-coated handle.**

Chemically compatible with a wide range of lab reagents. Heavy duty construction for years of rugged use. Ideal for transfer of laboratory solutions and powders.

### details

- High-density polyethylene construction offers more durability than hard rubber
- Polyethylene-coated wire bail handle provides a comfortable and sturdy grip
- Molded-in graduations in pints and liters are easy-to-read
- Graduated

### Nalgene Graduated Bucket

Cat. No.	Capacity, L (gal.)	No. per Pack	No. per Case
7002-0025	9.5 (2-1/2)	1	6

## ► Thermo Scientific Nalgene Autoclavable Graduated Buckets

white polypropylene



**Nalgene™ graduated, autoclavable buckets are ideal for use in food industries and can be used for many chemicals and corrosive liquids.**

These general purpose laboratory buckets are fully autoclavable and provide excellent chemical resistance. Sturdy construction and convenient tall size make these buckets a lab necessity.

### details

- White polypropylene pails offer sturdy construction for long-lasting use in the lab
- Nylon-coated wire bail handle provides a comfortable and sturdy grip
- Molded-in graduated in pints and liters are easy-to-read
- Autoclavable/Graduated

### Nalgene Autoclavable Graduated Buckets

Cat. No.	Capacity, L (qt.)	No. per Pack	No. per Case
7012-0080	7.6 (8)	1	6
7012-0110	10.4 (11)	1	6
7012-0140	13.2 (14)	1	6

## ► Thermo Scientific Nalgene Buckets with Lids

low-density polyethylene, nylon coated wire bail



**Nalgene™ Buckets with air-tight lids meet OSHA standards for storage of bloodborne pathogens.**

These air-tight buckets are ideal for storing specimens in formalin and other preservatives. Excellent for no-splash transport around the lab. Chemically-resistant to a wide range of lab solutions.

### details

- White air-tight polyethylene cover is close-fitting, making these pails ideal for storing specimens in formalin and other preservatives
- Nylon-coated wire bail handle provides a comfortable and sturdy grip
- Molded-in graduated in pints and liters are easy-to-read
- Graduated

**Compliance:** Meets OSHA 29CFR 1910.1030 standard for use as protection against bloodborne pathogens.

### Nalgene Buckets with Lids

Cat. No.	Capacity, L (qt.)	Height with Closure, cm (in.)	No. per Pack	No. per Case
7102-0080	7.6 (8)	26.7 (10-1/2)	1	12
7102-0140	13.2 (14)	32.8 (12-9/10)	1	6

## ► Thermo Scientific Nalgene Large Cylindrical Containers with Covers

high-density polyethylene



**Nalgene™ Large Cylindrical HDPE Containers are ideal for storing and transporting dry and solid materials, specimens and general lab supplies.**

Containers are stackable and have positive-lock lids that seal tight for storing both dry and solid materials.

### details

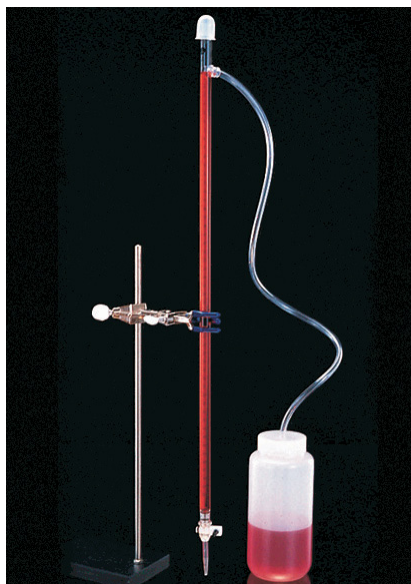
- High-density polyethylene containers provide excellent chemical and temperature resistance protecting contents from contamination
- Easy-grip molded-in handles are comfortable and durable for lifting and moving
- Positive-lock lid provides a tight seal for transport or storage

**Certifications:** National Sanitation Foundation (NSF) approved for food and beverage storage.

### Nalgene Large Cylindrical Containers with Covers

Cat. No.	Capacity, L (gal.)	O.D. x H, cm (in)	No. per Pack	No. per Case
7142-0015	15 (4)	30.5 x 24 (12 x 9.5)	1	6
7142-0020	20 (5.3)	30.5 x 38 (12 x 15)	1	6
7142-0030	30 (8)	39 x 30.5 (15.5 x 12)	1	6

► **Thermo Scientific Nalgene Break-Resistant Self-Zeroing Automatic Burets**  
 acrylic body, PMP stopcock and tip, Teflon® TFE plug, polyvinyl chloride tubing,  
 low-density polyethylene bottle



**Nalgene™ Break-Resistant Self-Zeroing Burets offer repeatable, accurate results.**

Crystal clear, durable, easy to use, safer than glass.

**details**

- Individually calibrated to meet accuracy of ASTM\* E287 for repeatable, accurate results
- Can be used with dilute mineral acids and bases except hydrofluoric acid and ammonium hydroxide
- pH range of 1-14 is ideal; compatible with up to 5% wt/wt acids and up to 30% bases accommodating a wide range of titrants
- Comes complete with everything you need to get started: acrylic buret, LDPE squeeze bottle assembly, 3 ft. (91 cm) PVC tubing, and buret cover
- Transparent/Graduated

**Compliance:** ASTM E 287

*Disclaimer: Not for use with alcohols and organic solvents. Exposure to these solutions will cause immediate damage.*

Teflon® is a registered trademark of DuPont used under license by Nalge Nunc International Corporation.

**Nalgene Break-Resistant Self-Zeroing Automatic Burets**

Cat. No.	Capacity, mL	Reservoir, mL	Graduations, mL	Tolerance, mL	No. per Pack	No. per Case
3640-0010	10	500	0.1	±0.04	1	4
3640-0025	25	500	0.1	±0.06	1	4
3640-0050	50	1000	0.1	±0.10	1	4

## ► Thermo Scientific Nalgene Self-Zeroing Buret Filler Kit

low-density polyethylene bottle, PVC tubing, polypropylene fill tube and adapter



**The Nalgene™ Self-Zeroing Buret Filler Kit converts any conventional glass or plastic 25 or 50 mL buret into an automatic-filling, self-zeroing buret to save time and convenience.**

Avoid messy spills from manual filling or funneling reagents into the top of the buret. The squeeze bottle is the reservoir for your titrant which is delivered into the mouth of buret through the provided clear PVC tubing.

### details

- Reverse adapter plug to switch from 25 to 50 mL buret or to store or transport titrating reagents
- Squeeze bottle closure without dispensing port also included for storing titrant in the bottle or field transport
- Converts any bottle into an automatic-filling, self-zeroing buret

**Directions for Use:** Connect the PP fill tube to the end of the transfer tubing and insert tubing into the mouth of the buret using the adapter provided. Adjust the fill tube tip so it is just above the zero mark of your buret. Squeeze the bottle to fill the buret above the zero mark. when you release the squeeze on the bottle, the excess titrant will be drawn back into the reservoir bottle, leaving the titrant level in the buret at the zero line.

**Includes:** 1000 mL low-density polyethylene squeeze bottle, 4 ft. length (1.2 m) of clear, flexible PVC tubing, fill tube, adapter, and closure for reagent bottle.

*Disclaimer: Buret not included.*

### Nalgene Self-Zeroing Buret Filler Kit

Cat. No.	Description	No. per Pack	No. per Case
3645-2550	Self-zeroing Buret Filler Kit	1	4



## ► Thermo Scientific Nalgene Burets

acrylic body, polymethylpentene tip; Teflon® TFE (tetrafluoroethylene) stopcock and plug



**Nalgene™ break-resistant burets offer repeatable, accurate results.**

Crystal clear, durable, easy to use, safer than glass. For use with acids and bases (use as directed).

### details

- Buret is durable and unaffected by diluted acids and bases (except hydrofluoric acid and ammonium hydroxide) used as titrants
- pH range of 1-14 is ideal; compatible with up to 5% wt/wt acids and up to 30% bases accommodating a wide range of titrants
- Transparent/Graduated

**Compliance:** ASTM E 287, Class B

*Notes: Not for use with alcohols and organic solvents. Exposure to these solutions will cause immediate damage.*

Teflon® is a registered trademark of DuPont used under license by Nalge Nunc International Corporation.

### Nalgene Burets

Cat. No.	Capacity, mL	Graduations, mL	Tolerance, mL	No. per Pack	No. per Case
3650-0025	25	0.10	±0.06	1	4
3650-0050	50	0.10	±0.10	1	4
3650-0100	100	0.20	±0.20	1	4
713650-1025	Replacement Stopcock Assembly for 25 mL			2	2

► **Thermo Scientific Nalgene Autoclavable Carboys with Spigot**  
 polypropylene, white polypropylene screw closure with thermoplastic elastomer gasket,  
 polypropylene spigot



**Nalgene™ Autoclavable Carboys have a spigot boss which is molded in one piece with the carboy for convenience and strength – great for storing and dispensing solutions and media.**

Can be autoclaved before refilling to eliminate bacterial growth when storing sterile water.

**details**

- Molded-in graduations in 1 gal. and 5 L increments for ease in dispensing
- Integral shoulder handles make lifting comfortable
- Ideal for storing and dispensing solutions and media and can be autoclaved before refilling to eliminate bacterial growth
- Molded-in spigot boss provides strength and leak resistance
- Autoclavable/Graduated/Leakproof†

**Ordering Information:** Neck accepts No. 13.5 rubber stopper. Includes spigot closure. Follow product insert instructions for autoclaving to ensure proper function.

**Includes:** Polypropylene screw closure, spigot, spigot closure and tubing adapter.

*Notes: Containers can be used for long-term storage, but direct UV exposure should be avoided. Remove and disassemble spigot before autoclaving. May be assembled with spigot closure for autoclaving. Completely disengage closure threads before autoclaving avoided.*

**Nalgene Autoclavable Carboys with Spigot**

Cat. No.	Capacity, L (gal.)	Closure Size, mm	Neck I.D., mm	O.D., mm	Height with Closure, mm	No. per Pack	No. per Case
2319-0020	10 (2-1/2)	83B	64	250	389	1	6
2319-0050	20 (5-1/2)	83B	64	286	528	1	4
2319-0130	50 (13)	83B	64	379	678	1	1

► **Select the perfect container for your application.**

Go to: [www.thermoscientific.com/nalgenecontainers](http://www.thermoscientific.com/nalgenecontainers)  
 or download our free apps from iTunes or the Android market  
 – search *Nalgene Bottles*.

## ► Thermo Scientific Nalgene Round Carboys with Spigots

low-density polyethylene; polypropylene spigot and screw closure



**Nalgene™ Round Carboys have a spigot boss which is molded in one piece with the carboy for convenience, strength and leak resistance.**

Suitable for collecting and dispensing distilled water, acids and reagents.

### details

- Molded-in graduations in 1 gal. and 5 L increments for ease in dispensing
- Integral shoulder handles make lifting comfortable for four largest sizes
- Molded-in spigot boss provides strength and leak resistance
- Graduated/Leakproof†

**Ordering Information:** Shoulder loop on 1 gal. (3.8 L) size, shoulder handles on all other sizes. 1 gal. size is not graduated.

**Includes:** Polypropylene screw closure, spigot, spigot closure and tubing adapter.

### Nalgene Round Carboys with Spigots

Cat. No.	Capacity, L (gal.)	Closure Size, mm	Neck I.D., mm	O.D., mm	Height with Closure, mm	No. per Pack	No. per Case
2318-0010	4 (1)	38-430	26	154	335	1	6
2318-0020	10 (2-1/2)	83B	64	250	389	1	6
2318-0050	20 (5-1/2)	83B	64	286	528	1	4
2318-0065	25 (6-1/2)	83B	64	287	594	1	1
2318-0130	50 (13)	83B	64	379	678	1	1

► **Thermo Scientific Nalgene Clearboys**

polycarbonate, polypropylene closure with thermoplastic elastomer gasket, polypropylene spigot



**Nalgene™ Clearboys are durable, lighter and safer than glass.**

Useful for large-volume media and culture preparation, especially where visual inspection of contents for quality is important. Autoclavable for sterile applications and ideal for refrigerated or frozen storage of aqueous solutions such as sterile water, aqueous reagents and media.

**details**

- With white polypropylene screw closure; TPE gasket
- Molded-in graduations in 1 gal. and 5 L increments for ease in dispensing
- Polycarbonate is glass-clear for easy visual inspection and volume measurements
- Clearboys are suitable for mixing, storing and freezing aqueous-based reagents and biologicals
- Designed with 83 mm neck to accept TopWorks and other Nalgene accessories for versatility
- Graduated "To Contain"
- Autoclavable/Transparent/Graduated/Leakproof†

**Includes:** Polypropylene closure and TPE gasket, spigot, spigot closure and tubing adapter.

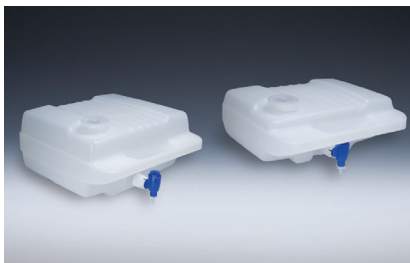
*Notes: Remove and disassemble spigot before autoclaving. May be assembled with spigot closure for autoclaving. Completely disengage closure threads before autoclaving. Repeated autoclaving will shorten the life of polycarbonate carboys.*

**Nalgene Round Transparent Clearboys**

Cat. No.	Capacity, L (gal.)	Closure Size, mm	Neck I.D., mm	O.D., mm	Height with Closure, mm	No. per Pack	No. per Case
2317-0020	10 (2-1/2)	83B	66	253	394	1	4
2317-0050	20 (5-1/2)	83B	66	290	536	1	4

## ► Thermo Scientific Nalgene Low-Profile Lowboys

high-density polyethylene



**Nalgene™ Low-Profile Lowboys™ are perfect for dispensing most liquids, including reagents, distilled water and titrants.**

The low-profile design fits into tight spaces on shelves and in refrigerators and can stack three high. Exhibits excellent chemical resistance.

### details

- Stack up to three high to save space on benchtop or in refrigerator
- Contour handle allows easy one-handed carrying – even when full
- Excellent chemical resistance – can tolerate strong acids and bases for a wide variety of solutions
- Leakproof†

**Includes:** Spigot and spigot closure and four acid-proof, pressure-sensitive labels. Also includes a spigot tubing adapter.

**Alerts:** Not recommended for use with aggressive organic solvents

#### Nalgene Low-Profile Lowboys

Cat. No.	Capacity, L (gal.)	Closure Size, mm	L x W, mm	No. per Pack	No. per Case
2323-0008	8 (2)	63	305 x 366	1	4
2323-0015	15 (4)	63	371 x 371	1	4

## ► Thermo Scientific Nalgene Autoclavable Lowboys with Spigot

polypropylene copolymer; polypropylene spigot and screw closure



**Nalgene™ Low-Profile Lowboys are perfect for dispensing most liquids, including reagents, distilled water and titrants.**

The low-profile design fits into tight spaces on shelves and in refrigerators and can stack three high. Exhibits excellent chemical resistance.

### details

- Stack up to three high to save space on benchtop or in refrigerator
- Contour handle allows easy one-handed carrying – even when full
- Excellent chemical resistance – can tolerate strong acids and bases for a wide variety of solutions
- Follow autoclave instructions provided with the product to ensure proper function.
- Autoclavable/Leakproof†

**Includes:** Polypropylene spigot, spigot closure and 63 mm screw closure.

*Notes: Remove and disassemble spigot before autoclaving. May be assembled with spigot closure for autoclaving. Completely disengage closure threads before autoclaving.*

#### Nalgene Autoclavable Lowboys with Spigot

Cat. No.	Capacity, L (gal.)	Closure Size, mm	L x W, mm	No. per Pack	No. per Case	No. per Case
2324-0008	8 (2)	63	305 x 366	1	4	4
2324-0015	15 (4)	63	371 x 371	1	4	4



► **Thermo Scientific Nalgene Autoclavable Rectangular Carboys with Spigot**  
polypropylene copolymer, polypropylene spigot and screw closure



**Nalgene™ Rectangular Carboys have a space-saving design for storing and dispensing media, solutions and sterile water.**

These carboys feature a wide mouth opening for filling and cleaning and a spigot for easy dispensing. Sturdy stainless steel handle.

**details**

- Wide-mouth opening permits easy filling, transferring and cleaning of carboys
- Molded-in graduations in 1 gal. and 5 L increments for ease in dispensing
- Stainless steel handle for ease in transporting containers
- Molded-in spigot boss provides strength and leak resistance
- 20 L size has molded-in hand grip for easy handling
- Durable design made to withstand rigorous lab and field use
- Spigot comes with tubing adapter for added versatility
- Autoclavable/Graduated

**Includes:** Polypropylene spigot and screw closure, spigot closure and tubing adapter.

*Notes: Remove and disassemble spigot before autoclaving. May be assembled with spigot closure for autoclaving. Completely disengage closure threads before autoclaving.*

**Nalgene Autoclavable Rectangular Carboys with Spigot**

Cat. No.	Capacity, L (gal.)	Closure Size, mm	Neck I.D., mm	Height with Closure, mm	No. per Pack	No. per Case
2321-0020	9 (2)	100	86	361	1	6
2321-0050	20 (5-1/2)	100	86	399	1	4

► **Thermo Scientific Nalgene Rectangular Clearboy with Spigot**  
 polycarbonate; polypropylene spigot and screw closure



**Nalgene™ Rectangular Clearboys** have a space-saving design for storing and dispensing media, solutions and sterile water. These carboys feature a wide mouth opening for filling and cleaning. Features a sturdy stainless steel handle and extreme impact resistance. Ideal for cold room use.

**details**

- Wide-mouth opening permits easy filling, transferring and cleaning of carboys
- Molded-in graduations in 1 gal. and 5 L increments for ease in dispensing
- Stainless steel handle for ease in transporting containers
- Molded-in spigot boss provides strength and leak resistance
- Clear wall makes this carboy ideal when visual inspection of contents is necessary
- 20 L size has molded-in hand grip for easy handling
- Durable design made to withstand rigorous lab and field use
- Spigot comes with tubing adapter for versatility
- Follow autoclave instructions provided with the product for proper function
- Autoclavable/Transparent/Graduated/Leakproof†

**Includes:** Polypropylene spigot and screw closure; spigot, spigot closure and tubing adapter.

*Notes: Remove and disassemble spigot before autoclaving. May be assembled with spigot closure for autoclaving. Completely disengage closure threads before autoclaving.*

**Nalgene Autoclavable Clear Rectangular Carboys with Spigot**

Cat. No.	Capacity, L (gal.)	Closure Size, mm	Neck I.D., mm	Height with Closure, mm	No. per Pack	No. per Case
2322-0020	9 (2)	100	86	361	1	6
2322-0050	20 (5-1/2)	100	86	399	1	4

► **Thermo Scientific Nalgene Rectangular Carboy with Spigot**  
 high-density polyethylene, polypropylene spigot and screw closure



**Nalgene™ Rectangular Carboys have a space-saving design for storing and dispensing media, solutions and deionized water.**

These carboys feature a wide mouth opening for filling and cleaning and a sturdy stainless steel handle. Tough, rigid and excellent chemical resistance make this carboy a good choice for dispensing stock solutions.

**details**

- Wide-mouth opening permits easy filling, transferring and cleaning of carboys
- Molded-in graduations in 1 gal. and 5 L increments for ease in dispensing
- Stainless steel handle for ease in transporting containers
- Molded-in spigot boss provides strength and leak resistance
- Spigot comes with a convenient tubing adapter providing versatility
- 20 L size has molded-in hand grip for easy handling
- Durable design made to withstand rigorous lab and field use
- Rectangular shape saves valuable space on your benchtop
- Graduated

**Includes:** Polypropylene screw closure and spigot, spigot closure and tubing adapter.

**Nalgene Rectangular Carboy with Spigot**

Cat. No.	Capacity, L (gal.)	Closure Size, mm	Neck I.D., mm	Height with Closure, mm	No. per Pack	No. per Case
2320-0020	9 (2)	100	86	361	1	6
2320-0050	20 (5-1/2)	100	86	399	1	4

► **Thermo Scientific Nalgene Fluorinated Rectangular Carboy with Spigot**  
 fluorinated high-density polyethylene, Tefzel™ ETFE spigot, fluorinated white polypropylene screw closure



**Nalgene™ Fluorinated Rectangular Carboys have a space-saving design for storing and dispensing a variety of solvents.**

These carboys feature a wide mouth opening for filling and cleaning and a sturdy stainless steel handle. Fluorinated surface (inside and out) improves barrier properties and reduces solvent absorption while enhancing long-term container performance and prevents loss due to permeation.

**details**

- With Tefzel™ ETFE spigot; fluorinated white polypropylene screw closure
- Wide-mouth opening permits easy filling, transferring and cleaning of carboys
- Molded-in graduations in 1 gal. and 5 L increments for ease in dispensing
- Stainless steel handle for ease in transporting containers
- Molded-in spigot boss provides strength and leak resistance
- Rectangular shape saves valuable space on your benchtop
- 20 L size has molded-in hand grip for easy handling
- Durable design made to withstand rigorous lab and field use
- Graduated

**Includes:** ETFE spigot and fluorinated white polypropylene screw closure, ETFE spigot, spigot closure and tubing adapter.

**Nalgene Fluorinated Rectangular Carboy with Spigot**

Cat. No.	Capacity, L (gal.)	Closure Size, mm	Neck I.D., mm	L x W, mm	Height with Closure, mm	No. per Case
DS2327-0020	9 (2)	100	86	216 x 147	358	1
DS2327-0050	20 (5-1/2)	100	86	318 x 219	381	1

## ► Thermo Scientific Nalgene Carboys with Tubulation

low-density polyethylene, polypropylene screw closure



**Nalgene™ Carboys with Tubulation are molded in one piece with serrated tubulation for strength, leak resistance and a longer life.**

Convenient wide-shoulder handles for easy carrying.

### details

- Molded-in graduations in 1 gal. and 5 L increments for ease in dispensing
- Carboy and tubulation molded in one piece for strength, leak resistance and a longer life
- Low outlet provides for more complete drainage
- Molded-in handle for ease in transporting containers
- Graduated/Leakproof†

**Includes:** Polypropylene screw closure.

*Notes: Hose clamp should be used when attaching tubing to ensure a tight fit and avoid leaking. Containers can be used for long-term storage, but direct UV exposure should be avoided.*

Nalgene Carboys with Tubulation

Cat. No.	Capacity, L (gal.)	Closure Size, mm	Neck I.D., mm	O.D., mm	Height with Closure, mm	No. per Pack	No. per Case
2302-0020	10 (2-1/2)	83B	64	245	389	1	6
2302-0050	20 (5-1/2)	83B	64	281	528	1	4

## ► Thermo Scientific Nalgene Autoclavable Carboys with Bottom Tubulation

polypropylene; polypropylene screw closure; TPE (thermoplastic elastomer) gasket



**Nalgene™ Autoclavable Carboys with Bottom Tubulation are used with distilled water and culture media.**

These carboys are molded in one piece with serrated tubulation for strength, leak resistance and a longer life. Tubulation accepts 1/2 in. (13 mm) I.D. tubing. Low outlet ensures more complete drainage.

### details

- Bottom tubulation molded in one piece with bottle ensures strength and leak resistance
- Location of outlet low on the carboy ensures more complete drainage
- Molded-in handles for ease in transporting containers
- Molded-in graduations in 1 gal. and 5 L increments for ease in dispensing
- Follow autoclave instructions provided with the product for proper function
- Autoclavable/Graduated/Leakproof†

**Ordering Information:** Both sizes accept 1/2 in. I.D. (1.3 cm) tubing (not included).

**Includes:** White polypropylene screw closure with TPE gasket.

*Notes: A hose clamp should be used when attaching tubing to ensure tight fit. Completely disengage threads or remove cap before autoclaving*

Nalgene Autoclavable Carboys with Bottom Tubulation

Cat. No.	Capacity, L (gal.)	Closure Size, mm	Neck I.D., mm	O.D., mm	Height with Closure, mm	No. per Pack	No. per Case
2301-0020	10 (2-1/2)	83B	64	245	389	1	6
2301-0050	20 (5-1/2)	83B	64	281	528	1	4



## ► Thermo Scientific Nalgene Rectangular Carboys with Tubulation

high-density polyethylene; polypropylene screw closure



**Nalgene™ Rectangular Carboys are molded in one piece with serrated tubulation for strength, leak resistance and a longer life.**

Tubulation accepts 1/2 in. (13 mm) ID tubing. Efficient use of laboratory space with rectangular shape.

### details

- Wide-mouth opening permits easy filling, transferring and cleaning of carboys
- Molded-in graduations in 1 gal. and 5 L increments for ease in dispensing
- Carboy and tubulation molded in one piece for strength, leak resistance and a longer life
- Low outlet provides for more complete drainage
- Stainless steel handle attached and built-in hand grip for ease in handling
- Rectangular shape saves valuable space on your benchtop
- Graduated

**Includes:** Polypropylene screw closure.

*Notes: Hose clamp should be used when attaching tubing to ensure a tight fit and avoid leaking. Containers can be used for long-term storage, but direct UV exposure should be avoided.*

### Nalgene Rectangular Carboys with Tubulation

Cat. No.	Capacity, L (gal.)	Closure Size, mm	Neck I.D., mm	L x W, mm	Height with Closure, mm	No. per Pack	No. per Case
2303-0020	9 (2)	100	86	220 x 153	361	1	6
2303-0050	20 (5-1/2)	100	86	229 x 320	399	1	4

### ► Select the perfect container for your application.

Go to: [www.thermoscientific.com/nalgenecontainers](http://www.thermoscientific.com/nalgenecontainers)  
or download our free apps from iTunes or the Android market  
– search *Nalgene Bottles*.

► **Thermo Scientific Nalgene Safety Dispensing Jugs**

low-density polyethylene; white polypropylene screw closure



**Nalgene™ Dispensing Jug has a permanently attached pour spout and a polypropylene screw closure.**

Lighter in weight than glass, this jug protects against leakage, breaking and contamination. Wide shoulder handle and molded bottom grip for additional support when pouring.

**details**

- Integral shoulder handle and molded bottom grip make carrying and pouring comfortable and easy
- Molded-in pour spout reduces splash, back off closure to vent
- Attached closure won't get lost
- Leakproof†

**Includes:** Polypropylene screw closure.

**Nalgene Safety Dispensing Jugs**

Cat. No.	Capacity, L (gal.)	Closure Size, mm	Neck I.D., mm	O.D., mm	Height with Closure, mm	No. per Pack	No. per Case
2340-0020	10 (2-1/2)	83B	64	250	389	1	4
2340-0050	20 (5-1/2)	83B	64	286	528	1	4

## ► Thermo Scientific Nalgene Jugs

polypropylene copolymer, polypropylene screw closure



**Nalgene™ PPCO Jugs have a large carrying handle which allows the use of rubber gloves for safe handling of corrosive liquids.**

Excellent chemical resistance. The pour spout is offset for easy, accurate pouring.

### details

- Lightweight for easy handling and carrying – one-third the weight of glass
- Autoclavable/Leakproof†

**Includes:** Polypropylene screw closure; 8 L size has a white PP closure with a TPE gasket.

*Notes: Completely disengage threads or remove cap before autoclaving polypropylene jugs. For the best results, autoclave using a properly vented closure.*

Nalgene Jugs

Cat. No.	Capacity, L (gal.)	Closure Size, mm	Neck I.D., mm	O.D., mm	Height with Closure, mm	No. per Pack	No. per Case
2221-0010	4 (1)	38-430	25	152	304	1	6
2221-0020	8 (2)	53B	39	195	385	1	6

## ► Thermo Scientific Nalgene Jugs

low-density polyethylene, polypropylene screw closure



**Nalgene™ LDPE Jugs have a large carrying handle which allows the use of rubber gloves for safe handling of corrosive liquids.**

Excellent chemical resistance. The pour spout is offset for easy, accurate pouring.

### details

- Lightweight for easy handling and carrying – one-third the weight of glass
- Leakproof†

**Includes:** Polypropylene screw closure.

Nalgene Jugs

Cat. No.	Capacity, L (gal.)	Closure Size, mm	Neck I.D., mm	O.D., mm	Height with Closure, mm	No. per Pack	No. per Case
2220-0010	4 (1)	38-430	25	152	304	1	6
2220-0020	8 (2)	53B	39	195	385	1	6

► **Thermo Scientific Nalgene Quick-Action Spigots**  
polypropylene with high-density polyethylene tubing adapter



**Nalgene™ Quick-Action Spigots are the standard for Nalgene carboys.**

Includes HDPE tubing adapter which accepts tubing with 1/4 or 5/16 in. I.D.

**details**

- Takes 5/8 in. (1.6 cm) I.D. tubing without a tubing adapter
- Supplied with adapter for 1/4 or 5/16 in. (0.6 or 0.8 cm) tubing
- Autoclavable (unassembled)

*Notes: Spigot should be disassembled before autoclaving. Tubing adapter is not autoclavable.*

**Nalgene Quick-Action Spigots**

Cat. No.	Material	No. per Pack	No. per Case	No. per Case
6422-0010	Polypropylene	1	12	12

► **Thermo Scientific Nalgene Quick-Action Spigots**  
Tefzel™ ETFE (ethylene-tetrafluoroethylene), polypropylene



**Nalgene™ ETFE Quick-Action Spigots are chemically resistant to selected solvents and other chemicals.**

Body and plug are made of Tefzel™ ETFE. Accepts tubing with 5/8 in. I.D.

**details**

- Replacement spigot for DS2327-series fluorinated carboys
- Tubing adapter not included
- Autoclavable (unassembled)

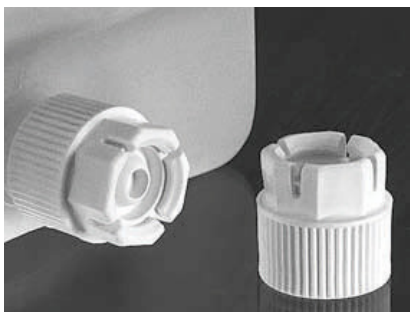
*Notes: Disassemble spigot before autoclaving.*

**Nalgene Quick-Action Spigots**

Cat. No.	Material	No. per Pack	No. per Case	No. per Case
6432-0010	ETFE	1	2	2

## ► Thermo Scientific Nalgene Spigot Closure

white polypropylene lock nut, thermoplastic elastomer plug



**Nalgene™ Spigot Closure fits all Nalgene carboys with spigot and selected Nalgene tanks with spigot.**

Use to replace the spigot during autoclaving. Also useful when handling could damage or accidentally turn on a spigot or when a spigot-less carboy is required. Included with all Nalgene carboys with spigot.

Closure keeps solutions safe by providing a leakproof seal when handling could damage or accidentally turn spigot on

Designed to fit Nalgene carboys, Clearboys, Lowboys and tanks that have a thread size of 1-1/8 in., 12 male screw head

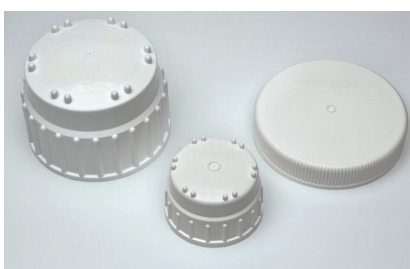
### details

- Autoclavable/Leakproof

#### Nalgene Spigot Closure

Cat. No.	Description	No. per Pack	No. per Case
6423-0010	Spigot Closure for Nalgene Bottles, Jars, Carboys	4	24

## ► Thermo Scientific Nalgene Carboy Replacement Screw Closures and Gaskets



**Nalgene™ Replacement Screw Closures for Nalgene Carboys fit securely for guaranteed leakproof service. Gaskets for 53B and 83B closures are also available.**

### details

- Made to fit Nalgene Carboys

#### Nalgene Carboy Replacement Screw Closures and Gaskets

Cat. No.	Closure Size, mm	Description	No. per Pack	No. per Case
712150-1000	100	Screw White Closure PP 100 mm	12	12
712155-1200	120	Large Jar Closure White PP 120 mm	12	12
712160-0053	53B	Sealing Gasket TPE For 53B closure	12	12
712160-0530	53B	Screw Closure White PP 53B	12	12
712160-0830	83B	Screw Closure White PP 83B	2	2
712162-1830	–	Sealing Gasket TPE for Sealing Closure 712160-0830	5	5



► **Thermo Scientific Nalgene Magnetic Carboy Stirrer**

polyvinylidene fluoride, stainless steel-reinforced shaft, Teflon® TFE stir bar, TFE, impeller, polypropylene screw closure



**Nalgene™ Magnetic Carboy Stirrer is used with Nalgene 10 L and 20 L carboys for low-speed mixing of high volumes of media and buffer solution.**

Adjusts easily to fit either a 10 L or 20 L Nalgene carboy with an 83B size closure. Supplied with a closure and two impellers. Eliminates the need to retrieve magnets from your solution.

**details**

- Provides low-speed mixing of high volumes of media and buffer solution
- Fits 10 L or 20 L Nalgene carboys with 83B closure
- For use with a magnetic stir plate (not included)
- Autoclavable

*Notes: Includes closure and two impellers.*

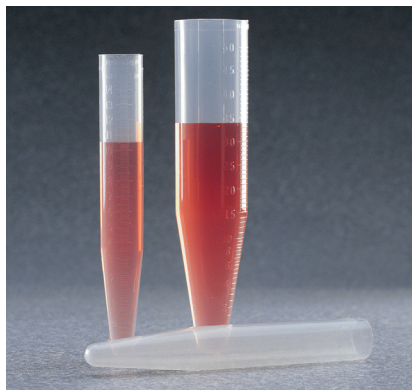
Teflon® is a registered trademark of DuPont used under license by Nalge Nunc International Corporation.

**Nalgene Magnetic Carboy Stirrer**

Specifications	
Closure size, mm	83B
Shaft O.D.	13 mm
Shaft Length	588 mm
Stir Bar Diameter	13 mm
Stir Bar Length	75 mm

Cat. No.	Length, mm	No. per Case
DS2227-0020	588	1

## ► Thermo Scientific Nalgene Conical-Bottom Centrifuge Tubes polypropylene copolymer



**Nalgene™ PPCO Conical-Bottom Centrifuge Tubes with molded-in graduations have excellent chemical resistance.**

Designed for low-speed centrifugation up to 6000 xg in refrigerated and non-refrigerated centrifuges

### details

- Translucent PPCO is compatible with a wide range of lab reagents
- Conical bottoms concentrate pellet in a small area for easy isolation and retrieval
- Molded-in graduations last the life of the tube
- Last longer than polycarbonate tubes under conditions of repeated autoclaving
- Autoclavable/Graduated

**Ordering Information:** Supplied without closure; friction fit closures available. For 15 mL use DS3111-00017; for 50 mL use DS8111-0029.

*Notes: Conical centrifuge tubes must be filled at least 80% for proper performance.*

### Nalgene Conical-Bottom Centrifuge Tubes

Cat. No.	Capacity, mL	O.D. x H, mm	No. per Pack	No. per Case	Cap, sold separately
3103-0015	15	16.8 x 118.6	10	100	DS3111-0017
3103-0050	50	28.7 x 133.1	10	100	DS3111-0029

## ► Thermo Scientific Nalgene Conical-Bottom Centrifuge Tubes polycarbonate



**Nalgene™ PC open-top Conical-Bottom Tubes have outstanding mechanical strength and clarity, making them excellent for whole-cell separations.**

Versatile polycarbonate tubes can be used up to 6000 xg in both refrigerated and nonrefrigerated centrifuges.

### details

- Conical bottoms concentrate pellet in a small area for easy isolation and retrieval
- Excellent clarity for viewing tube contents
- Molded-in graduations last the life of the tube
- Autoclavable/Graduated/Transparent

**Ordering Information:** Supplied without closure; friction fit closures available. For 15 mL use DS3111-0017; for 50 mL use DS3111-0029.

*Notes: Conical centrifuge tubes must be filled at least 80% for proper performance. Autoclaving repeatedly shorten the life of polycarbonate tubes.*

### Nalgene Conical-Bottom Centrifuge Tubes

Cat. No.	Capacity, mL	O.D. x H, mm	No. per Pack	No. per Case	Caps, sold separately
3105-0015	15	17.0 x 120.1	10	100	DS3111-0017
3105-0050	50	28.7 x 134.1	10	100	DS3117-0029

► **Thermo Scientific Nalgene High-Speed Round-Bottom Centrifuge Tubes**  
polypropylene copolymer



**Nalgene™ High-Speed Round-Bottom Centrifuge Tubes feature uniform wall thickness and diameter, providing improved rotor fit and performance.**

Designed for use up to 50,000 xg to fit high speed rotors in refrigerated or nonrefrigerated centrifuges.

**details**

- Molding technique produces uniform wall thickness for increased strength
- Uniform diameter (no taper) for better rotor fit and force tolerance
- 50 mL (Cat. No. 3110-9500) and 100 mL sizes lipped for easier retrieval from rotor cavities
- Excellent chemical resistance
- Economical choice – may also be used as test tubes
- Longer-lasting than polycarbonate tubes under conditions of repeated autoclaving
- Autoclavable

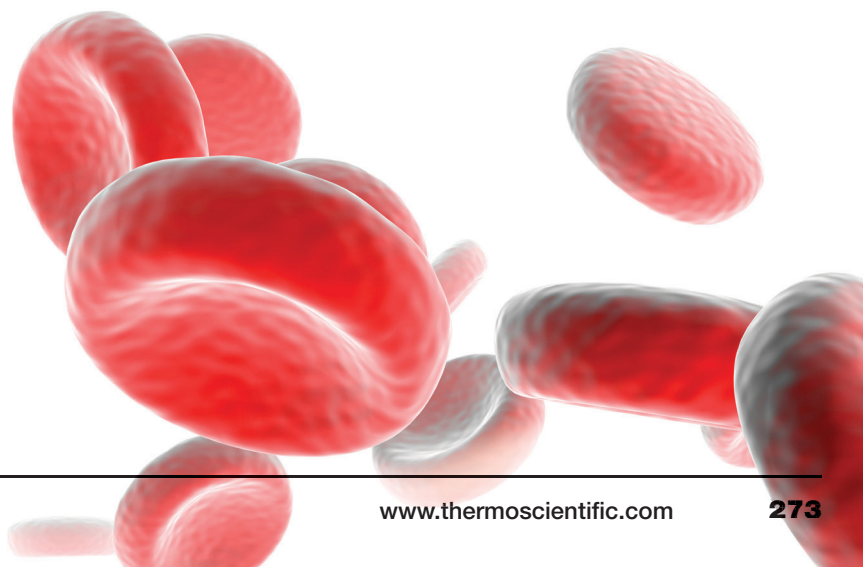
**Ordering Information:** Supplied without closure; friction-fit closures available separately (Cat. No. DS3111-series).

**Alerts:** Use with friction fit closures (Cat. No. DS3111-series) for high speed centrifugation.

*Notes: Centrifuge tubes must be filled at least 80% for proper performance.*

**Nalgene Oak Ridge High-Speed Centrifuge Tubes**

Cat. No.	Capacity, mL	O.D. x H, mm	No. per Pack	No. per Case	Caps, sold separately
3110-0120	12	15.8 x 102.1	10	100	DS3111-0016
3110-0150	15	15.8 x 112.8	10	100	DS3111-0016
3110-0160	16	17.8 x 98.6	10	100	DS3111-0018
3110-0380	38	25.2 x 88.1	10	100	DS3111-0025
3110-0500	50	28.5 x 102.4	10	100	DS3111-0030
3110-9500	50	28.4 x 102	10	40	DS3111-0029
3110-1000	100	31.5 x 163.1	10	100	DS3111-0032



## ► Thermo Scientific Nalgene High-Speed Round-Bottom Centrifuge Tubes polycarbonate



**Nalgene™ High-Speed Round-Bottom Centrifuge Tubes demonstrate outstanding mechanical strength and clarity.**

Designed for high-speed centrifugation up to 50,000 xg in refrigerated and non-refrigerated centrifuges

### details

- Designed with round bottoms and uniform diameter (no taper) for better fit and force tolerance to fit high-speed rotors
- Molding technique produces uniform wall thickness for increased strength
- Lip (on Cat. Nos. 3117-1000 and 3117-9500) allows easier retrieval from rotor cavities
- Economical choice – may also be used as test tubes
- Excellent clarity for viewing contents
- These high-speed polycarbonate tubes withstand temperatures from -135° to +135°C (-211° to +275°F)
- Autoclavable/Transparent

**Ordering Information:** Supplied without closure; friction-fit closures available separately (Cat. No. DS3111-series).

**Alerts:** Use with friction-fit closures (Cat. No. DS3111-series) for high-speed centrifugation.

*Notes: Centrifuge tubes must be filled at least 80% for proper performance.*

### Nalgene Oak Ridge High-Speed Centrifuge Tubes

Cat. No.	Capacity, mL	O.D. x H, mm	No. per Pack	No. per Case	Cap, sold separately
3117-0120	12	15.9 x 103.1	10	100	DS3111-0016
3117-0150	15	16.0 x 114.0	10	100	DS3111-0016
3117-0160	16	17.9 x 99.8	10	100	DS3111-0018
3117-0380	38	25.3 x 88.6	10	100	DS3111-0025
3117-0500	50	28.8 x 103.1	10	100	DS3111-0030
3117-9500	50	28.5 x 102.0	10	100	DS3111-0029
3117-1000	100	31.5 x 164.3	10	40	DS3111-0032

► **Thermo Scientific Nalgene Oak Ridge High-Speed Centrifuge Tubes**  
Teflon® FEP, Tefzel™ ETFE screw closure



**Nalgene™ FEP Oak Ridge High-Speed Centrifuge Tubes are excellent for high-speed centrifugation of aggressive chemicals.**

Excellent for chloroform and phenol extractions in refrigerated machines up to 50,000 xg.

**details**

- Withstand temperatures from -100°C to 150°C (-148°F to 302°F) for versatility from the freezer to the autoclave and more
- Use to 50,000 xg in refrigerated centrifuges (tubes must be filled 100% to prevent collapse)
- Leakproof† Tefzel™ ETFE closures prevent material loss under ordinary use for most spins up to 10,000 xg
- Sealing caps available for 30 mL and 50 mL size to assure leakproof service especially at high speeds >10,000 xg or when spinning hazardous materials
- Autoclavable/Biohazard/Leakproof†/Teflon® FEP

**Ordering Information:** Optional sealing caps available – Cat. No. DS3131-0020 (for 30 mL tube) and DS3131-0024 (for 50 mL tube).

**Includes:** Tefzel™ ETFE screw closures (Cat. No. DS3131-series).

**Alerts:** Must be filled to 100% of total capacity for centrifugation.

Teflon® is a registered trademark of DuPont used under license by Nalge Nunc International Corporation.

**Nalgene Oak Ridge High-Speed Centrifuge Tubes**

Cat. No.	Capacity, mL	O.D. x H, mm	Closure Size, mm	No. per Pack	No. per Case
3114-0010	10	16.0 x 79.0	13	2	10
3114-0030	30	25.7 x 93.0	20	2	10
3114-0050*	50	28.8 x 106.7	24	2	10

\*Designed to fit standard rotors. Actual brim capacity of Cat. No. 3114-0050 is 42 mL.



## ► Thermo Scientific Nalgene Oak Ridge Centrifuge Tubes with Sealing Cap

polysulfone, polypropylene screw closure



**Nalgene™ Oak Ridge PSF Centrifuge Tubes feature enhanced resistance to acids and bases and excellent clarity for viewing separation interfaces and pellets.**

Designed for high-speed centrifugation up to 50,000 xg in refrigerated and non-refrigerated centrifuges.

### details

- With round bottoms to fit high speed rotors
- Transparent, with straw-colored cast, allows easy content viewing
- PP linerless screw closures included – easy to clean and provides leakproof performance under ordinary use for most spins up to 10,000 xg
- For leakproof assurance at speeds >10,000 xg, use with sealing cap or sealing cap assembly sold separately
- Autoclavable/Transparent/Leakproof†

**Includes:** Polypropylene sealing cap.

**Ordering Information:** Sealing cap assembly also available separately (Cat. No. DS3131-series).

*Notes: Tubes must be filled at least 80% for proper performance.*

### Nalgene Oak Ridge Centrifuge Tubes with Sealing Cap

Cat. No.	Capacity, mL	O.D. x H, mm	Closure Size, mm	No. per Pack	No. per Case
3115-0030	30	25.8 x 94.0	20	10	100
3115-0050*	50	29.0 x 107.2	24	10	100

\*Designed to fit standard rotors. Actual brim capacity of Cat. No. 3115-0050 is 42 mL.

► **Thermo Scientific Nalgene Oak Ridge High-Speed Centrifuge Tubes**  
polycarbonate; polypropylene screw closure



**Nalgene™ Oak Ridge High-Speed Centrifuge Tubes are strong and have excellent mechanical strength.**

Transparent tubes are clear and allow easy viewing of contents. Designed for high-speed centrifugation up to 50,000 xg in refrigerated and non-refrigerated centrifuges.

**details**

- Excellent mechanical strength and visual clarity
- Can be autoclaved repeatedly – but autoclaving will reduce product life
- PP linerless closures included – easy to clean and provide leakproof performance under ordinary use for most spins <10,000 xg
- For leakproof performance >10,000 xg, use a sealing cap or sealing cap assembly (sold separately)
- Autoclavable/Biohazard/Transparent/Leakproof<sup>†</sup>

**Includes:** polypropylene screw closure.

**Ordering Information:** Optional sealing-cap assemblies available for selected sizes. Use Cat. No. DS3131-0020 (for 30 mL tube) and Cat. No. DS3131-0024 (for 50 mL tube).

*Note: Centrifuge tubes must be filled at least 80% for proper performance.*

**Nalgene Oak Ridge High Speed Centrifuge Tubes**

Cat. No.	Capacity, mL	O.D. x H, mm	Closure Size, mm	No. per Pack	No. per Case
3118-0010	10	16.1 x 80.5	13	10	100
3118-0028	28	25.8 x 94.0	20	10	100
3118-0030	30	25.8 x 94.0	20	10	100
3118-0050*	50	28.8 x 106.4	24	10	100
3118-0085	85	38.2 x 105.2	33	10	100

*\*Designed to fit standard rotors. Actual brim capacity of Cat. No. 3118-0050 is 42 mL.*

## ► Thermo Scientific Nalgene Oak Ridge High-Speed Centrifuge Tubes

polypropylene copolymer, polypropylene screw closure



**Nalgene™ Oak Ridge High-Speed Centrifuge Tubes are strong and have excellent mechanical strength. Translucent tubes are contact-clear and allow easy viewing of contents.**

### details

- Greater chemical resistance than polycarbonate
- Can be autoclaved repeatedly – lasts longer than polycarbonate tubes under conditions of repeated autoclaving
- PP linerless closures – easy to clean and provides leak proof protection under normal conditions up to 10,000 xg
- For speeds >10,000 xg, sealing caps or sealing cap assemblies are recommended
- Autoclavable/Biohazard/Leakproof†

**Ordering Information:** Optional sealing cap assemblies are also available for select sizes. Use Cat. No. DS3131-0020 for 28 mL and 30 mL tubes and DS3131-0024 for 50 mL tube.

**Includes:** Polypropylene screw closures.

*Notes: Centrifuge tubes must be filled at least 80% for proper performance.*

### Nalgene Oak Ridge High Speed Centrifuge Tubes, PPCO

Cat. No.	Capacity, mL	O.D. x H, mm	Closure Size, mm	No. per Pack	No. per Case
3119-0010	10	16.1 x 80.5	13	10	100
3119-0028	28	25.8 x 94.0	20	10	100
3119-0030	30	25.8 x 93.5	20	10	100
3119-0050	50	28.8 x 105.9	24	10	100

► **Thermo Scientific Nalgene Oak Ridge High-Speed Centrifuge Tubes**  
 polysulfone, polypropylene screw closure with silicone gasket



**Nalgene™ PSF High-Speed Oak Ridge Centrifuge tubes feature enhanced resistance to acids and bases and come with sealing caps.**

Designed for high-speed centrifugation up to 50,000 xg in refrigerated and non-refrigerated centrifuges.

**details**

- With round bottoms to fit high speed rotors
- Transparent, with straw-colored cast, allows easy content viewing
- PP sealing cap closure with silicone gasket for extra leak protection when spinning hazardous substances at >10,000 xg
- Autoclavable/Biohazard/Transparent/Leakproof†

**Includes:** Polypropylene sealing cap with silicone gasket.

**Ordering Information:** Sealing cap assembly available separately (Cat. No. DS3131-0024).

*Note: Conical centrifuge tubes must be filled at least 80% for proper performance.*

**Nalgene Oak Ridge Centrifuge Tubes**

Cat. No.	Capacity, mL	O.D. x H, mm	Closure Size, mm	No. per Pack	No. per Case
3137-0050*	50	28.8 x 114.8	24	10	50

*\*Designed to fit standard rotors. Actual brim capacity of Cat. No. 3137-0050 is 42 mL.*

## ► Thermo Scientific Nalgene Oak Ridge High-Speed Centrifuge Tubes

polycarbonate; polypropylene screw closure; silicone gasket



**Nalgene™ Polycarbonate High-speed Oak Ridge Centrifuge Tubes are strong and have excellent mechanical strength. Transparent tubes provide clarity for easy viewing of contents.**

Designed for high-speed centrifugation up to 50,000 xg in refrigerated and non-refrigerated centrifuges

### details

- With round bottoms to fit high speed rotors
- Transparent, allowing easy content viewing
- PP sealing caps with silicone gaskets for extra leak protection when spinning >10,000 x g or spinning hazardous materials
- Autoclavable/Biohazard/Transparent/Leakproof†

**Includes:** Polypropylene sealing cap with silicone gasket.

**Ordering Information:** Sealing cap assembly available separately (Cat. No. DS3131-0020 for 30 mL tube and DS3131-0024 for 50 mL tube).

*Notes: Conical centrifuge tubes must be filled at least 80% for proper performance*

### Nalgene Oak Ridge High Speed Centrifuge Tubes

Cat. No.	Capacity, mL	O.D. x H, mm	Closure Size, mm	No. per Pack	No. per Case
3138-0010	10	16.1 x 83.8	13	10	50
3138-0016	16	18.1 x 107.2	15	10	50
3138-0030	30	25.8 x 102.6	20	10	50
3138-0050*	50	28.8 x 114.8	24	10	50

\*Designed to fit standard rotors. Actual brim capacity of Cat. No. 3138-0050 is 42 mL.



## ► Thermo Scientific Nalgene Oak Ridge High-Speed Centrifuge Tubes

polypropylene copolymer, polypropylene screw closure, silicone gasket



**Nalgene™ Oak Ridge High-speed Centrifuge Tubes are strong and have excellent mechanical strength.**

Translucent tubes are contact-clear and allow easy viewing of contents. Designed for high-speed centrifugation up to 50,000 xg in refrigerated and non-refrigerated centrifuges

### details

- Greater chemical resistance than polycarbonate
- Can be autoclaved repeatedly – last longer than polycarbonate tubes under conditions of repeated autoclaving
- PP sealing caps with silicone gaskets included for extra leak protection when spinning >10,000xg or spinning hazardous materials
- Autoclavable/Biohazard/Leakproof†

**Includes:** polypropylene sealing cap with silicone gasket.

**Ordering Information:** Optional sealing-cap assemblies available for selected sizes. Use Cat. No. DS3131-0020 (for 30 mL tube) and DS3131-0024 (for 50 mL Tube).

*Note: Centrifuge tubes must be filled at least 80% for proper performance.*

### Nalgene Oak Ridge High-Speed Centrifuge Tubes with Sealing Cap

Cat. No.	Capacity, mL	O.D. x H, mm	Closure Size, mm	No. per Pack	No. per Case
3139-0010	10	16.1 x 82.8	13	10	50
3139-0016	16	18.1 x 106.4	15	10	50
3139-0030	30	25.8 x 102.1	20	10	50
3139-0050*	50	28.8 x 113.5	24	10	50

\*Actual brim capacity of Cat. No. 3139-0050 is 42 mL.

## ► Thermo Scientific Nalgene Conical Oak Ridge High-Speed 35 mL Graduated Centrifuge Tubes

polycarbonate, polypropylene screw closure



**Nalgene™ Conical Oak Ridge tubes combine the better separation and pelleting of a conical tube with the superior sealing capability of an Oak Ridge tube.**

Tube can spin up to 50,000 xg in a refrigerated or non-refrigerated centrifuge, conical tube adapter required.

### details

- With conical bottoms for superior separation and pelleting
- Feature silk-screened graduations from 5 to 35 mL in 1 mL increments
- Polycarbonate tubes offer high strength, white graduations and are transparent
- Can withstand forces to 50,000 xg in refrigerated or non-refrigerated centrifuges – requires adapter, Cat. No. DS3147-0050, sold separately
- Supplied with polypropylene linerless closures for leakproof performance up to 10,000 xg
- Autoclavable/Biohazard/Transparent/Graduated/Leakproof†



**Includes:** Linerless, polypropylene screw closure.

**Ordering Information:** To assure leakproof service, especially at speeds greater than 10,000 xg or when spinning hazardous materials, use Nalgene sealing caps Cat. No. DS3132-0024 or sealing cap assemblies Cat. No. DS3131-0024.

**Requires:** white polycarbonate tube adapter (see Cat. No. DS3147-0050 below) to centrifuge.

*Note: Conical centrifuge tubes must be filled at least 80% for proper performance. Repeated autoclaving will shorten the life of PC tubes.*

### Nalgene Conical Oak Ridge High-Speed 35 mL Graduated Centrifuge Tubes

Cat. No.	Capacity, mL	O.D. x H, mm	Closure Size, mm	No. per Pack	No. per Case
3146-0050	35	28.3 x 104.4	24	10	100
DS3147-0050	35	Oakridge Conical Tube Adapter	–	–	6

► **Thermo Scientific Nalgene Conical Oak Ridge Centrifuge Tube**  
 graduated, polypropylene copolymer, polypropylene screw closure



**Nalgene™ Conical Oak Ridge tubes combine the better separation and pelleting of a conical tube with the superior sealing capability of an Oak Ridge tube.**

Tube can spin up to 50,000 xg in a refrigerated or non-refrigerated centrifuge, conical tube adapter required. Can be used with sealing caps, sold separately, for added leakproof performance >10,000 xg.

**details**

- With conical bottoms for superior separation and pelleting
- Feature silk-screened graduations from 5 to 35 mL in 1 mL increments
- Polypropylene copolymer tubes are translucent and offer better chemical resistance than polycarbonate; repeatedly autoclavable
- Can withstand forces to 50,000 xg in refrigerated or non-refrigerated centrifuges – requires adapter, Cat. No. DS3147-0050, sold separately
- Supplied with polypropylene linerless closures for leak-proof performance up to 10,000 xg
- Autoclavable/Biohazard/Graduated/Leakproof†



**Includes:** Linerless, polypropylene screw closure.

**Ordering Information:** To assure leakproof service, especially at speeds greater than 10,000 xg or when spinning hazardous materials, use Nalgene sealing cap Cat. No. DS3132-0024 or sealing cap assembly Cat. No. DS3131-0024.

**Requires:** White polycarbonate tube adapter (see Cat. No. DS3147-0050 in the table below).

**Nalgene Conical Oak Ridge Centrifuge Tube**

Cat. No.	Capacity, mL	O.D. x H, mm	Closure Size, mm	No. per Pack	No. per Case
3148-0050	35	28.3 x 103.8	24	10	100
DS3147-0050	35	Oakridge Conical Tube Adapter	–	–	6

## ► Thermo Scientific Nalgene Friction-Fit Closures for Plastic Centrifuge Tubes polypropylene



**Nalgene™ Friction-Fit closures are designed to fit Nalgene open-top round bottom and conical centrifuge tubes and feature a pull tab for easy removal from the centrifuge.**

May not be liquid-tight during high-speed centrifugation.

### details

- Designed to be compatible with Nalgene open-top round bottom and conical centrifuge tubes
- Cat. No. DS3111-0030 fits non-lipped 50 mL centrifuge tubes only
- Autoclavable



### Nalgene Friction-Fit Closures for Open Top Centrifuge Tubes

Cat. No.	Closure Size, mm	No. per Case
DS3111-0016	16	20
DS3111-0017	17	20
DS3111-0018	18	20
DS3111-0025	25	20
DS3111-0029	29	20
DS3111-0030	30	20
DS3111-0032	32	20

## ► Thermo Scientific Nalgene Sealing Cap Assemblies polypropylene screw closure, Tefzel™ ETFE plug, Viton™ fluoroelastomer o-ring



**Nalgene™ Sealing Cap Assembly permits tube use at their highest rated speed level (10,000 xg or greater) without leakage, even when full.**

Recommended when spinning hazardous materials compatible with centrifuge tube material.

### details

- Top fits securely for use at maximum speeds without leakage
- Autoclavable/Biohazard/Leakproof†

*Notes: Completely disengage threads before autoclaving.*

### Nalgene Sealing Cap Assemblies

Cat. No.	Closure Size, mm	No. per Case
DS3131-0020	20	2
DS3131-0024	24	2

► **Thermo Scientific Nalgene Oak Ridge High-Speed Centrifuge Tube Sealing Caps**  
polypropylene screw closure, silicone gasket



**Nalgene™ Sealing Caps for Oak Ridge Centrifuge Tubes ensure leakproof service at their maximum speeds >10,000 xg, even when full.**

Also recommended when spinning hazardous materials compatible with centrifuge tube material.

**details**

- White polypropylene with red silicone gaskets for leakproof high speed spin performance
- Designed to fit Oak Ridge centrifuge tubes with 20 or 24 threaded closure
- Autoclavable/Biohazard/Leakproof†

*Notes: Before autoclaving, set closure on top of the container without engaging the threads.*



**Nalgene Sealing Caps for Oak Ridge Tubes**

Cat. No.	Closure Size, mm	No. per Case
DS3132-0020	20	2
DS3132-0024	24	2

► **Thermo Scientific Nalgene Oak Ridge Conical Centrifuge Tube Adapter**  
white polycarbonate



**Nalgene™ Oak Ridge Conical Tube Adapter must be used with Nalgene 35 mL conical Oak Ridge Tubes (Cat. Nos. 3146, 3148).**

**details**

- Easily removed from rotors after use
- Autoclavable

**Nalgene Oak Ridge Conical Tube Adapter**

Cat. No.	Use with 35 mL Oak Ridge Tubes	No. per Case
DS3147-0050	Cat. Nos. 3146-0050 and 3148-0050	6



## ► Centrifuge Chemical Resistance Table

Chemical, Concentration	Centrifugeware												
	Tubes						O-rings		Closures				
	FEP	PPCO	PC	PE	PP	PSF	PS	SILI	Viton®	PP	Tefzel® ETFE	PE	PPE
1-(4-Chlorophenyl)ethanone, pure	S	S	M	S	M	M	U	U	U	M	S	S	–
1,3-Butadiene, pure	S	U	U	U	U	U	U	U	S	U	S	U	U
1,4-Dioxane, pure	S	M	U	M	M	U	U	U	U	M	M	M	U
1:3 Mixture Of Nitric And Hydrochloric Acids, pure	S	U	U	U	U	U	U	U	M	U	S2	U	U
1-Pentanol, pure	S	S	M	M	M	M	S2	U	S	M	S	M	M
1-Phenylethanone, pure	S	M	U	M	M	U	U	U	U	M	S	M	U
1-Undecanol, pure	S	S2	M	S	M	M	M	–	S	M	S2	S	–
2,2,4-Trimethylpentane, pure	S	U	U	U	U	M	U	U	–	U	S2	U	–
2,2'-Oxybispropane, pure	S	U	U	U	U	U	U	U	U	U	S2	U	–
2,4,6-Trinitrophenol, pure	S	M	U	U	M	U	U	U	S	M	M	U	S2
2-Hydroxy-1,2,3-Propanetricarboxylic Acid Tributyl Ester, pure	S	M	U	M	M	U	U	U	U	M	S2	M	U
2-Hydroxybenzaldehyde, pure	S	S2	M	S	M	M	U	U	M	M	U	S	–
2-Isopropoxypropane, pure	S	U	U	U	U	U	U	U	U	U	S2	U	–
2-Methoxyethanol, pure	S	S	U	S	M	U	U	U	U	M	S2	S	–
2-Methoxyethyl Oleate, pure	S	S2	U	S	M	U	U	U	–	M	S	S	–
2-Propanol, pure	S	S	U	S	S	M	S2	S2	S	S	S	S	S2
2-Propanone, pure	S	M	U	U	M	U	U	U	U	M	M	U	U
2-Propenenitrile, pure	S	U	U	S	U	U	U	U	U	U	S2	S	U
3-Phenyl-2-propenal, pure	S	U	M	U	U	M	U	U	U	U	S2	U	–
4'-Chloroacetophenone, pure	S	S	M	S	M	M	U	U	U	M	S	S	–
Acetaldehyde, pure	S	M	U	U	M	U	U	U	U	M	M	U	U
Acetic Acid Benzyl Ester, pure	S	S2	U	M	S	U	U	U	S	S	S2	M	–
Acetic Acid Phenylmethyl Ester, pure	S	S2	U	M	S	U	U	U	S	S	S2	M	–
Acetic Anhydride, pure	S	M	U	U	M	U	U	U	U	M	S	U	U
Acetone, pure	S	M	U	U	M	U	U	U	U	M	S2	U	U
Acetonitrile, pure	S	U	U	S	M	U	U	U	U	M	S2	S	U
Acetophenone, pure	S	M	U	M	M	U	U	U	U	M	S	M	U
Acrylonitrile, pure	S	U	U	S	U	U	U	U	U	U	S2	S	U
Adipic Acid, pure	S	S	S	S	S	S	S	–	S2	S	S	S	–
Alanine, pure	S	S	S	S	S	S	S	S2	S	S	S	S	S
Allyl Alcohol, pure	S	S	M	U	S	M	U	–	S	S	S2	U	–
Aluminum Chloride, pure	S	S	S2	S	S	S	S	U	S	S	S	S	S
Aluminum Hydrate, pure	S	S	U	S	S	M	M	S2	S	S	S	S	S
Aluminum Hydroxide, pure	S	S	U	S	S	M	M	S2	S	S	S	S	S

### Key:

S = Satisfactory

S1 = Satisfactory, may cause discoloration

S2 = Satisfactory below 26°C only

M = Marginal; may be satisfactory for use in a centrifuge depending on length of exposure and speed. Testing under operation conditions is suggested before actual run.

U = Unsatisfactory; not recommended

Chemical, Concentration	Centrifugeware												
	Tubes						O-rings		Closures				
	FEP	PPCO	PC	PE	PP	PSF	PS	SILI	Viton®	PP	Tefzel® ETFE	PE	PPE
Aluminum Salts, pure	S	S	M	S	S	M	S2	U	M	S	S	S	S2
Aluminum Trihydrate, pure	S	S	U	S	S	M	M	S2	S	S	S	S	S
Amino Acids, pure	S	S	S	S	S	S	S	S2	S	S	S2	S	S
Ammonia, pure	S	S	U	S	S	M	S2	U	U	S	S	S	M
Ammonium Chloride, pure	S	S	S2	S	S	S	S	S2	S2	S	S	S	S2
Ammonium Glycolate, pure	S	S2	M	S	S	M	S	–	S2	S	S	S	–
Ammonium Oxalate, pure	S	S2	S	S	S	S	S	–	–	S	S	S	–
Ammonium Salts, pure	S	S	M	S	S	M	M	S2	M	S	S	S	S2
Amyl Alcohol, pure	S	S	M	M	M	M	S2	U	S	M	S	M	M
Amyl Chloride, pure	S	U	U	U	U	U	U	U	M	U	S	U	U
Aniline, pure	S	U	U	U	M	U	U	U	U	M	M	U	U
Aqua Regia, pure	S	U	U	U	U	U	U	U	M	U	S2	U	U
Arsenic Acid, pure	S	M	S	S	S	S	S	S2	S	S	S	S	M
Benzaldehyde, pure	S	M	U	U	M	U	U	U	U	M	M	U	U
Benzenamine, pure	S	U	U	U	M	U	U	U	U	M	M	U	U
Benzene, pure	S	U	U	U	U	U	U	U	S	U	S2	U	U
Benzol, pure	S	U	U	U	U	U	U	U	S	U	S2	U	U
Benzyl Acetate, pure	S	S2	U	M	S	U	U	U	S	S	S2	M	–
Benzyl Alcohol, pure	S	U	U	U	M	U	U	U	S	M	S	U	–
Boric Acid, pure	S	S	S	S	S	S	S	S2	S	S	S	S	S
Bromine, pure	S	U	U	U	U	U	U	U	U	U	S2	U	U
Bromoform, pure	S	U	U	U	U	U	U	U	S	U	M	U	–
Butadiene, pure	S	U	U	U	U	U	U	U	S	U	S	U	U
Butyl Acetate, pure	S	M	U	U	U	U	U	U	U	U	S2	U	U
Butyl Chloride, pure	S	U	U	U	U	U	U	U	–	U	S	U	U
Butyl Citrate, pure	S	M	U	M	M	U	U	U	U	M	S2	M	U
Butyric Acid, pure	S	U	U	U	U	M	U	U	M	U	S	U	–
Calcium Chloride, pure	S	S	S	S	S1	S	S	S2	S	S1	S	S	S
Calcium Hypochlorite, Saturated	S	S	U	S	S	M	S2	U	S	S	S	S	M
Carbazole, pure	S	S	U	S	S	U	S	–	–	S	S	S	–
Carbon Disulfide, pure	S	U	U	U	M	U	U	U	S	M	M	U	U
Carbon Tetrachloride, pure	S	U	U	U	U	U	U	U	S	U	S	U	U
Cedarwood Oil, pure	S	U	M	U	U	M	U	U	S	U	S2	U	–
Cellosolve® Acetate, pure	S	S2	U	S	M	U	U	U	U	M	S2	S	–
Chlorobenzene, pure	S	U	U	U	U	U	U	U	S	U	M	U	U
Chloroform, pure	S	U	U	U	U	U	U	U	S	U	M	U	U

**Key:**

S = Satisfactory

S1 = Satisfactory, may cause discoloration

S2 = Satisfactory below 26°C only

M = Marginal; may be satisfactory for use in a centrifuge depending on length of exposure and speed. Testing under operation conditions is suggested before actual run.

U = Unsatisfactory; not recommended

## ► Centrifuge Chemical Resistance Table, continued

Chemical, Concentration	Centrifugeware												
	Tubes						O-rings		Closures				
	FEP	PPCO	PC	PE	PP	PSF	PS	SILI	Viton®	PP	Tefzel® ETFE	PE	PPE
Cinnamaldehyde, pure	S	U	M	U	U	M	U	U	U	U	S2	U	–
Cinnamic Aldehyde, pure	S	U	M	U	U	M	U	U	U	U	S2	U	–
Cinnamon Oil, pure	S	M	M	U	U	M	U	U	U	U	S2	U	–
Copper Sulfate, pure	S	S	S	S	S	S	S	S2	M	S	S	S	S
Cresol, pure	S	M	U	U	U	U	U	U	U	U	S2	U	U
Cyanoethylene, pure	S	U	U	S	U	U	U	U	U	U	S2	S	U
Cyclohexane, pure	S	M	M	M	M	M	U	U	S2	M	S2	M	U
Cyclohexanone, pure	S	U	U	M	M	U	U	U	U	M	S	M	U
Cyclopentane, pure	S	U	U	U	U	U	U	U	S	U	S	U	U
Decahydronaphthalene, pure	S	U	U	M	U	U	U	U	S	U	S	M	U
Decalin, pure	S	U	U	M	U	U	U	U	S	U	S	M	U
Diacetone Alcohol, pure	S	M	U	S	M	U	M	U	U	M	S2	S	–
Diacetone, pure	S	M	U	U	S2	U	U	U	U	S2	S2	U	U
Dibutyl Phthalate, pure	S	M	M	U	M	M	U	U	M	M	M	U	U
Diethyl Benzene, pure	S	U	U	U	U	U	U	U	S	U	S2	U	–
Diethyl Ether, pure	S	U	U	U	U	U	U	U	U	U	S2	U	U
Diethyl Ketone, pure	S	M	U	U	M	U	U	U	U	M	M	U	U
Diethyl Malonate, pure	S	S	U	S	S	U	U	U	U	S	S	S	–
Diethylamine, pure	S	M	U	U	M	M	M	U	U	M	U	U	–
Diethylene Dioxide, pure	S	M	U	M	M	U	U	U	U	M	M	M	U
Diethylene Glycol Monoethyl Ether, pure	S	S	U	S	S	M	U	U	M	S	S	S	–
Diethylene Glycol, pure	S	S	M	S	S	M	S2	U	S	S	S	S	–
Diisopropyl Ether, pure	S	U	U	U	U	U	U	U	U	U	S2	U	–
Dimethyl Acetamide, pure	S	S	U	M	S	U	U	U	U	S	S2	M	–
Dimethyl Formamide, pure	S	S	U	S	S	U	U	U	U	S	M	S	U
Dimethyl Ketone, pure	S	M	U	U	M	U	U	U	U	M	M	U	U
Dimethylsulfoxide, pure	S	S	U	S	S	U	U	U	U	S	S2	S	S
Dioxane, pure	S	M	U	M	M	U	U	U	U	M	M	M	U
DIPE, pure	S	U	U	U	U	U	U	U	U	U	S2	U	–
Dipropylene Glycol, pure	S	S	M	S	S	M	S	U	S	S	S	S	S2
DMSO, pure	S	S	U	S	S	U	M	U	U	S	S2	S	S
Ether, pure	S	U	U	U	U	U	U	U	U	U	S2	U	U
Ethyl Acetate, pure	S	M	U	M	M	U	U	U	U	M	S2	M	U
Ethyl Alcohol, pure	S	S	U	M	S	S2	M	U	S	S	S	M	S
Ethyl Benzene, pure	S	U	U	U	U	U	U	U	S	U	M	U	U

### Key:

S = Satisfactory

S1 = Satisfactory, may cause discoloration

S2 = Satisfactory below 26°C only

M = Marginal; may be satisfactory for use in a centrifuge depending on length of exposure and speed. Testing under operation conditions is suggested before actual run.

U = Unsatisfactory; not recommended

Chemical, Concentration	Centrifugeware												
	Tubes							O-rings		Closures			
	FEP	PPCO	PC	PE	PP	PSF	PS	SILI	Viton®	PP	Tefzel® ETFE	PE	PPE
Ethyl Benzoate, pure	S	M	U	U	M	U	U	U	U	M	S2	U	U
Ethyl Butyrate, pure	S	M	U	M	M	U	U	U	U	M	S2	M	–
Ethyl Chloride, pure	S	U	U	U	U	U	U	U	S	U	S	U	U
Ethyl Cyanoacetate, pure	S	S	U	S	S	U	M	U	–	S	S	S	–
Ethyl Lactate, pure	S	S	U	S	S	U	U	U	U	S	S	S	–
Ethylene Chloride, pure	S	U	U	U	U	U	U	U	M	U	U	U	U
Ethylene Glycol Monomethyl Ether, pure	S	S	U	S	M	U	U	U	U	M	S2	S	–
Ethylene Glycol, pure	S	S	U	S	S	M	S	S2	S	S	S	S	S2
Ethylene Oxide, pure	S	U	U	U	M	U	U	U	U	M	S2	U	S2
EtO, pure	S	S	U	S	S	U	U	U	U	S	S	S	S2
Fatty Acids, Saturated, pure	S	S2	M	S	S	M	S2	U	S	S	S	S	S2
Fatty Acids, Unsaturated, pure	S	S2	M	S	S	M	M	U	S	S	S	S	S2
Fluorides, pure	S	S	S	S	S	S	M	U	M	S	S	S	S2
Formic Acid, pure	S	S2	U	M	S	M	U	U	M	S	S	M	S
Freon TF, pure	S	S2	M	S	M	M	U	U	M	M	S2	S	–
Fuel Oil No. 1, pure	S	M	S2	U	M	S2	U	U	S	M	S	U	U
Gasoline, pure	S	U	U	M	U	U	U	U	S	U	S	M	U
Glutaraldehyde Disinfectant, pure	S	S	M	S	S	M	M	U	M	S	S2	S	S
Glutaraldehyde, pure	S	S	M	S	S	M	M	U	U	S	S2	S	S
Glycerine, pure	S	S	S	S	S	S	S	S2	S	S	S	S	S
Glycerol, pure	S	S	S	S	S	S	S	S2	S	S	S	S	S
Hexane, pure	S	M	U	U	M	U	U	U	S	M	S2	U	U
Hydrated Alumina, pure	S	S	U	S	S	M	M	S2	S	S	S	S	S
Hydrazine, pure	S	U	U	U	U	U	U	U	S	U	U	U	–
Iodine Crystals, pure	S1	U	S1	U	S1	S1	S1	U	S	S1	S2	U	U
Isobutanol, pure	S	S	S2	S	S	S2	S2	S2	S	S	S	S	S
iso-Butyl Alcohol, pure	S	S	S2	S	S	S2	S2	S2	S	S	S	S	S
Isopropanol, pure	S	S	U	S	S	M	S2	S2	S	S	S	S	S2
Isopropyl Acetate, pure	S	M	U	M	M	U	U	U	U	M	S2	M	–
Isopropyl Alcohol, pure	S	S	U	S	S	M	S2	S2	S	S	S	S	S2
Isopropyl Benzene, pure	S	U	U	U	U	U	U	U	S	U	S2	U	–
Isopropyl Ether, pure	S	U	U	U	U	U	U	U	U	U	S2	U	–
Jet Fuel, pure	S	U	M	U	U	M	M	U	S	U	S2	U	M
Kerosene, pure	S	M	S2	U	M	S2	U	U	S	M	S	U	U
Lacquer Thinner, pure	S	U	U	U	U	U	U	U	U	U	S	U	U

**Key:**

S = Satisfactory

S1 = Satisfactory, may cause discoloration

S2 = Satisfactory below 26°C only

M = Marginal; may be satisfactory for use in a centrifuge depending on length of exposure and speed. Testing under operation conditions is suggested before actual run.

U = Unsatisfactory; not recommended

## ► Centrifuge Chemical Resistance Table, continued

Chemical, Concentration	Centrifugeware												
	Tubes							O-rings		Closures			
	FEP	PPCO	PC	PE	PP	PSF	PS	SILI	Viton®	PP	Tefzel® ETFE	PE	PPE
L-alpha-amino Propionic Acid, pure	S	S	S	S	S	S	S	S2	S	S	S	S	S
Lead Acetate, pure	S	S	S	S	S	S	S	U	M	S	S	S	S
L-Tartaric Acid, pure	S	S2	S2	M	S	S	S	S2	S	S	S	M	S2
Magnesium Chloride, pure	S	S	S	S	S	S	S	S2	S	S	S	S	S
MEK, pure	S	S2	U	U	M	U	U	U	U	M	M	U	U
Mercuric Chloride, pure	S	S	S	S	S	S	S2	M	S	S	S	S	S
Methoxyethyl Oleate, pure	S	S2	U	S	M	U	U	U	–	M	S	S	–
Methyl Acetate, pure	S	M	U	U	M	U	U	U	U	M	S2	U	U
Methyl Alcohol, pure	S	S	M	M	S1	S2	U	S2	M	S1	S	M	S
Methyl Ethyl Ketone, pure	S	S2	U	U	M	U	U	U	U	M	M	U	U
Methyl Isobutyl Ketone, pure	S	M	U	U	S2	U	U	U	U	S2	S2	U	U
Methyl Propyl Ketone, pure	S	M	U	U	M	U	U	U	U	M	S2	U	U
Methylene Chloride, pure	S	U	U	U	U	U	U	U	S	U	U	U	U
Methyloxirane, pure	S	U	U	U	M	U	U	U	U	M	S	U	S2
Methyl-t-Butyl Ether, pure	S	U	U	U	U	U	U	U	M	U	S2	U	–
MIBK, pure	S	M	U	U	S2	U	U	U	U	S2	S2	U	U
Mineral Spirits, pure	S	U	U	U	U	U	M	U	S	U	S2	U	–
n-Butanol, pure	S	S	M	S	S	M	S2	U	S	S	S	S	M
n-Butyl Acetate, pure	S	M	U	M	U	U	U	U	U	U	S2	M	U
n-Butyl Alcohol, pure	S	S	M	S	S	M	S2	U	S	S	S	S	M
n-Decane, pure	S	U	U	M	M	M	U	U	S	M	S	M	–
n-Heptane, pure	S	U	U	U	U	M	U	U	S	U	S	U	U
Nitrobenzene, pure	S	U	U	U	M	U	U	U	U	M	S2	U	U
Nitrohydrochloric Acid, pure	S	U	U	U	U	U	U	U	M	U	S2	U	U
Nitromethane, pure	S	U	U	U	U	U	U	U	U	U	M	U	U
n-Octane, pure	S	S2	M	U	U	M	U	U	S	U	S	U	U
Oil, Cedarwood, pure	S	U	U	U	U	U	U	U	S	U	S2	U	–
Oil, Cinnamon, pure	S	M	M	U	U	M	U	U	U	U	S2	U	–
Oil, Mineral, pure	S	S2	S2	U	U	S2	M	S2	S	U	S	U	S2
Oil, Orange, pure	S	M	U	U	M	M	U	U	S	M	S	U	–
Oil, Pine, pure	S	M	U	U	M	U	U	U	S	M	S2	U	–
Orange Oil, pure	S	M	U	U	M	M	U	U	S	M	S	U	–
Orthoarsenic Acid, pure	S	M	S	S	S	S	S	S2	S	S	S	S	S2
Ozone, pure	S	S2	U	M	U	S	U	S2	S2	U	S	M	U
p-Chloroacetophenone, pure	S	S	M	S	M	M	U	U	U	M	S	S	–
p-Dichlorobenzene, pure	S	U	U	U	U	U	U	U	U	U	U	U	U

### Key:

S = Satisfactory

S1 = Satisfactory, may cause discoloration

S2 = Satisfactory below 26°C only

M = Marginal; may be satisfactory for use in a centrifuge depending on length of exposure and speed. Testing under operation conditions is suggested before actual run.

U = Unsatisfactory; not recommended



Chemical, Concentration	Centrifugeware												
	Tubes						O-rings		Closures				
	FEP	PPCO	PC	PE	PP	PSF	PS	SILI	Viton®	PP	Tefzel® ETFE	PE	PPE
Pentyl acetate, pure	S	M	U	S	M	U	U	U	U	M	S	S	U
Perchloric Acid, pure	U	M	U	U	M	U	U	U	S	M	M	U	M
Perchloroethylene, pure	S	U	U	U	U	U	U	U	S	U	S2	U	–
Petroleum, pure	S	M	M	U	U	S2	U	U	S	U	S	U	S2
Phenyl Methyl Ketone, pure	S	M	U	M	M	U	U	U	U	M	S	M	U
Phenylacrolein, pure	S	U	M	U	U	M	U	U	U	U	S2	U	–
Picric Acid, pure	S	M	U	U	M	U	U	U	S	M	M	U	S2
Pine Oil, pure	S	M	U	U	M	U	U	U	S	M	S2	U	–
Potassium Chloride, pure	S	S	S	S	S	S	S	S2	S	S	S	S	S
Potassium Permanganate, pure	S	S1	S1	S	S1	S1	S2	S2	S2	S1	S	S	S
Propane, pure	S	S	S	S	S	S	U	S2	S	S	S	S	M
Propionic Acid, pure	S	S2	U	M	M	M	M	–	–	M	M	M	–
Propylene Glycol, pure	S	S	M	S	S	M	S	S2	S	S	S	S	S2
Pyridine, pure	S	U	U	U	U	U	U	U	U	U	U	U	U
Salicylaldehyde, pure	S	S2	M	S	M	M	U	U	M	M	U	S	–
sec-Butanol, pure	S	S	S2	S	S	S2	S2	S2	S	S	S	S	S
sec-Butyl Alcohol, pure	S	S	S2	S	S	S2	S2	S2	S	S	S	S	S
Silicone Oil, pure	S	S	S	S	S	S	S2	U	S	S	S	S	S2
Silver Acetate, pure	S	S	S2	S	S	S	S	U	S	S	S	S	S
Silver Nitrate, pure	S	S1	S	S	S1	S	S	S2	S	S1	S	S	S1
Skydrol LD4 Aviation Hydraulic Fluid, pure	S	M	U	M	M	U	U	U	S	M	S	M	–
Soda Ash, pure	S	S	M	M	S1	S	S2	S2	S	S1	S	M	S
Sodium Acetate, pure	S	S	S2	S	S	S	S	U	U	S	S	S	S
Sodium Carbonate, pure	S	S	M	M	S1	S	S2	S2	S	S1	S	M	S
Sodium Dichromate, pure	S	S	S	S	S	S	M	S2	S	S	S	S	–
Stearic Acid, pure	S	S	M	M	S2	S2	S2	U	S	S2	S	M	S2
Sulfur Dioxide, pure	S	S	M	S	S	M	U	U	S2	S	S	S	U
Sulfur Salts, pure	S	U	U	M	M	M	U	U	M	M	S2	M	M
Tartaric Acid, pure	S	S2	S2	M	S	S	S	S2	S	S	S	M	S2
TCA, pure	S	S	U	S2	S	U	U	U	U	S	M	S2	S2
tert-Butanol, pure	S	S	M	S	S	M	S2	U	S	S	S	S	S
tert-Butyl Alcohol, pure	S	S	M	S	S	M	S2	U	S	S	S	S	S
Tetrahydrofuran, pure	S	M	U	U	U	U	U	U	U	U	U	U	U
THF, pure	S	M	U	U	U	U	U	U	U	U	U	U	U
Thionyl Chloride, pure	S	U	U	U	U	U	U	–	M	U	S2	U	–

**Key:**

S = Satisfactory

S1 = Satisfactory, may cause discoloration

S2 = Satisfactory below 26°C only

M = Marginal; may be satisfactory for use in a centrifuge depending on length of exposure and speed. Testing under operation conditions is suggested before actual run.

U = Unsatisfactory; not recommended

## ► Centrifuge Chemical Resistance Table, continued

Chemical, Concentration	Centrifugeware												
	Tubes							O-rings		Closures			
	FEP	PPCO	PC	PE	PP	PSF	PS	SILI	Viton®	PP	Tefzel® ETFE	PE	PPE
Tincture of Iodine, pure	S1	U	S1	S2	S1	S1	M	U	S	S1	S	S2	S1
Toluene, pure	S	U	U	U	U	U	U	U	U	U	S2	U	U
Tribromomethane, pure	S	U	U	U	U	U	U	U	S	U	M	U	–
Tributyl Citrate, pure	S	M	U	M	M	U	U	U	U	M	S2	M	U
Trichloroacetic Acid, pure	S	S	U	S2	S	U	U	U	U	S	M	S2	S2
Trichloroethane, pure	S	U	U	U	U	U	U	U	S	U	S	U	U
Trichloroethylene, pure	S	U	U	U	U	U	U	U	S	U	U	U	U
Triethylene Glycol, pure	S	–	S2	S	S	S2	S2	–	S	S	S	S	–
Tripropylene Glycol, pure	S	S	S2	S	S	S	S	S2	S	S	S	S	S2
Tris Buffer Solution, pH 11, pure	S	S	U	S	S	S	S2	S2	S	S	S	S	S2
Tris Buffer Solution, pH 7.0, pure	S	S	M	S	S	S	S2	S2	S	S	S	S	S
Trisodium Phosphate, pure	S	S	M	S	S	M	S	S2	S	S	S	S	S2
Tung Oil, pure	S	–	–	S	S2	–	U	S2	S	S2	S	S	–
Tung Oil, pure	S	–	–	S	S2	–	U	S2	S	S2	S	S	–
Undecyl Alcohol, pure	S	S2	M	S	M	M	M	–	S	M	S2	S	–
Urea, pure	S	S	U	S	S	S	S	M	S	S	S	S	S
Vinyl Cyanide, pure	S	U	U	S	U	U	U	U	U	U	S2	S	U
White Spirits, pure	S	U	U	U	U	U	M	U	S	U	S2	U	–
Xylene, pure	S	U	U	U	U	U	U	U	S	U	S	U	U
Zinc Stearate, pure	S	S	S	S	S	S	S	–	S	S	S	S	S



Cosmos Supply Co., Ltd.  
cosmos\_supply@hotmail.com  
cosmos\_supply@yahoo.co.th



QTS Agro Co., Ltd.  
qts\_agro@hotmail.com  
qts\_agro@yahoo.co.th

[www.cosmos-supply.com](http://www.cosmos-supply.com)

### Key:

S = Satisfactory

S1 = Satisfactory, may cause discoloration

S2 = Satisfactory below 26°C only

M = Marginal; may be satisfactory for use in a centrifuge depending on length of exposure and speed. Testing under operation conditions is suggested before actual run.

U = Unsatisfactory; not recommended

► Thermo Scientific Nalgene Centrifuge Tube Low & High Speed Selector Guide

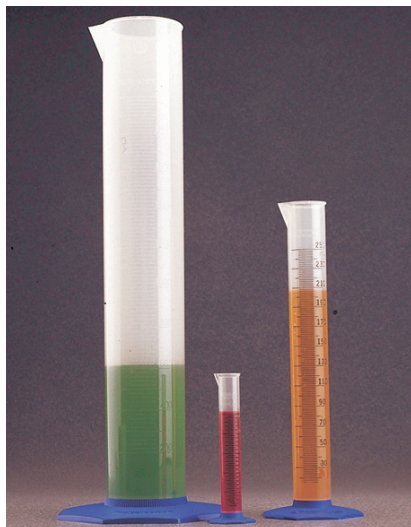
Nomical Volume	Cat. No.	Nom. Vol., mL	Description	Nom. Dim. Dia. x Ht., mm	Material	4°C	22°C	Closure Size (mm)	Closure Options Cat. No.	Rack <sup>1</sup> Cat. No.
10 mL	3114-0010	10	Oak Ridge tube, screw top	16.0 x 79.0	FEP	50,000	50,000 <sup>2</sup>	13		5970-0016
10 mL	3118-0010	10	Oak Ridge tube, screw top	16.1 x 81.5	PC	50,000	50,000	13		5970-0016
10 mL	3119-0010	10	Oak Ridge tube, screw top	16.1 x 80.5	PPCO	50,000	50,000	13		5970-0016
10 mL	3138-0010	10	Oak Ridge tube, sealing cap	16.1 x 83.8	PC	50,000	50,000	13		5970-0016
10 mL	3139-0010	10	Oak Ridge tube, sealing cap	16.1 x 82.8	PPCO	50,000	50,000	13		5970-0016
12 mL	3110-0120	12	Round tube, open top	15.8 x 102.1	PPCO	50,000	50,000	16	DS3111-0016	5970-0016
12 mL	3117-0120	12	Round tube, open top	15.9 x 103.1	PC	50,000	50,000	16	DS3111-0016	5970-0016
15 mL	3103-0015	15	Conical bottom tube, open top	16.8 x 118.6	PPCO	6,000	6,000	17	DS3111-0017	5970-0016
15 mL	3105-0015	15	Conical bottom tube, open top	17.0 x 120.1	PC	6,000	6,000	17	DS3111-0017	5970-0016
15 mL	3110-0150	15	Round tube, open top	15.8 x 112.8	PPCO	50,000	50,000	16	DS3111-0016	5970-0016
15 mL	3117-0150	15	Round tube, open top	16.0 x 114.0	PC	50,000	50,000	16	DS3111-0016	5970-0016
16 mL	3138-0016	16	Oak Ridge tube, sealing cap	18.1 x 107.2	PC	50,000	50,000	15	DS3132-0020	5970-0020
16 mL	3139-0016	16	Oak Ridge tube, sealing cap	18.1 x 106.4	PPCO	50,000	50,000	15	DS3132-0020	5970-0020
16 mL	3110-0160	16	Round tube, open top	17.8 x 98.6	PPCO	50,000	50,000	18	DS3111-0018	5970-0020
16 mL	3117-0160	16	Round tube, open top	17.9 x 99.8	PC	50,000	50,000	18	DS3111-0018	5970-0020
28 mL	3118-0028	28	Oak Ridge tube, screw top	25.8 x 94.0	PC	50,000	50,000	20	DS3132-0020	5970-0025
28 mL	3119-0028	28	Oak Ridge tube, screw top	25.8 x 94.0	PPCO	50,000	50,000	20	DS3132-0020	5970-0025
30 mL	3114-0030	30	Oak Ridge tube, screw top	25.7 x 93.0	FEP	50,000	20,000	20	DS3131-0020	5970-0025
30 mL	3115-0030	30	Oak Ridge tube, screw top	25.8 x 94.0	PSF	50,000	50,000	20	DS3132-0020	5970-0025
30 mL	3118-0030	30	Oak Ridge tube, screw top	25.8 x 94.0	PC	50,000	50,000	20	DS3132-0020	5970-0025
30 mL	3119-0030	30	Oak Ridge tube, screw top	25.8 x 93.5	PPCO	50,000	50,000	20	DS3132-0020	5970-0025
30 mL	3138-0030	30	Oak Ridge tube, sealing cap	25.8 x 102.6	PC	50,000	50,000	20	DS3132-0020	5970-0025
30 mL	3139-0030	30	Oak Ridge tube, sealing cap	25.8 x 102.1	PPCO	50,000	50,000	20	DS3132-0020	5970-0025
35 mL	3146-0050	35	Conical Oak Ridge tube, sealing cap	28.3 x 104.4	PC	50,000	50,000	24	DS3132-0024; 712150-0240	5970-0025
35 mL	3148-0050	35	Conical Oak Ridge tube, sealing cap	28.3 x 103.9	PPCO	50,000	50,000	24	DS3132-0024; 712150-0240	5970-0025
38 mL	3110-0380	38	Round tube, open top	25.2 x 88.1	PPCO	50,000	50,000	25	DS3111-0025	5970-0025
38 mL	3117-0380	38	Round tube, open top	25.3 x 88.6	PC	50,000	50,000	25	DS3111-0025	5970-0025
50 mL	3103-0050	50	Conical bottom tube, open top	28.7 x 133.1	PPCO	6,000	6,000	29	DS3111-0029	5970-0030
50 mL	3105-0050	50	Conical bottom tube, open top	28.7 x 134.1	PC	6,000	6,000	29	DS3111-0029	5970-0030
50 mL	3114-0050	50	Oak Ridge tube, screw top	28.8 x 106.7	FEP	50,000	20,000	24	DS3131-0024	5970-0030
50 mL	3115-0050	50	Oak Ridge tube, screw top	29.0 x 107.2	PSF	50,000	50,000	24	DS3131-0024	5970-0030
50 mL	3118-0050	50	Oak Ridge tube, screw top	28.8 x 106.4	PC	50,000	50,000	24	DS3131-0024	5970-0030
50 mL	3119-0050	50	Oak Ridge tube, screw top	28.8 x 105.9	PPCO	50,000	50,000	24	DS3131-0024; 712150-0240	5970-0030
50 mL	3137-0050	50	Oak Ridge tube, sealing cap	28.8 x 114.8	PSF	50,000	50,000	24	DS3132-0024	5930-0030
50 mL	3138-0050	50	Oak Ridge tube, sealing cap	28.8 x 114.8	PC	50,000	50,000	24	DS3132-0024	5930-0030
50 mL	3139-0050	50	Oak Ridge tube, sealing cap	28.8 x 113.5	PPCO	50,000	50,000	24	DS3132-0024	5930-0030
50 mL	3110-0500	50	Round tube, open top	28.5 x 102.4	PPCO	50,000	50,000	30	DS3111-0030	5930-0030
50 mL	3117-0500	50	Round tube, open top	28.8 x 103.1	PC	50,000	50,000	30	DS3111-0030	5930-0030
50 mL	3110-9500	50	Round tube with lip, open top	28.4 x 102.0	PPCO	50,000	50,000	29	DS3111-0029	5930-0030
50 mL	3117-9500	50	Round tube with lip, open top	28.5 x 106.2	PC	50,000	50,000	29	DS3111-0029	5930-0030
85 mL	3118-0085	85	Oak Ridge tube, screw cap	38.2 x 105.2	PC	50,000	50,000	33		
100 mL	3110-1000	100	Round tube with lip, open top	31.5 x 163.1	PPCO	50,000	50,000	32	DS3111-0032	5970-0030
100 mL	3117-1000	100	Round tube with lip, open top	31.5 x 164.3	PC	50,000	50,000	32	DS3111-0032	5930-0030

<sup>1</sup>White racks listed; other colors also available

<sup>2</sup>For use above 20,000 RCF, always pre-test tubes

## ► Thermo Scientific Nalgene Graduated Cylinders

polypropylene copolymer, blue polypropylene base



**Nalgene™ Graduated Cylinders are guaranteed to meet accuracy requirements of ASTM Class B, E1272.**

All sizes have a generous pour spout and molded-in graduations that won't rub off for years of dependable use. No meniscus allows accurate readings every time. The large base keeps cylinders stable on the benchtop preventing tipping hazards – won't break or chip like glass labware. Suitable for food and beverage use.

### details

- Guaranteed to meet requirements of ASTM Class B, E1272 for accuracy
- No meniscus to confuse readings – eliminates guesswork
- Large blue octagonal base prevents rolling and tipping
- Generous pour spout provides ease in dispensing liquids
- Molded-in graduations are silk-screened for easy reading (10 mL-1 L sizes only)
- Excellent chemical resistance for a wide variety of solutions
- Resists temperatures up to 135°C (275°F) for a variety of uses
- Autoclavable/Graduated

**Ordering Information:** Individually packaged.

**Compliance:** Meets CFR 21, Part 177.1520 and ASTM\* E 1272 Class B requirements, as well as all requirements of ISO Standard 6706.

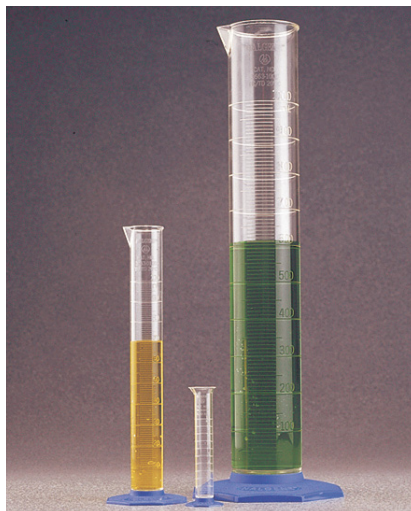
*Notes: Autoclaving will affect accuracy.*

### Nalgene Graduated Cylinders

Cat. No.	Capacity, mL	Graduations, mL	Limit of Error, mL	No. per Pack	No. per Case
3662-0010	10	0.2	±0.20	1	24
3662-0025	25	0.5	±0.34	1	18
3662-0050	50	1	±0.50	1	18
3662-0100	100	1	±1.00	1	12
3662-0250	250	2	±2.00	1	12
3662-0500	500	5	±4.00	1	8
3662-1000	1000	10	±6.00	1	6
3662-2000	2000	20	±12.0	1	4
3662-4000	4000	50	±29.0	1	2

## ► Thermo Scientific Nalgene Graduated Cylinders

polymethylpentene, blue polypropylene base



**Nalgene™ Graduated Cylinders are guaranteed to meet accuracy requirements of ASTM Class B, E1272.**

All sizes have a generous pour spout and molded-in graduations that won't rub off for years of dependable use. No meniscus allows accurate readings every time. The large base keeps cylinders stable on the benchtop preventing tipping hazards – won't break or chip like glass labware. Suitable for food and beverage use.

### details

- Guaranteed to meet requirements of ASTM Class B, E1272 for accuracy
- No meniscus to confuse readings – eliminates guesswork
- Large blue octagonal base prevents rolling and tipping
- Generous pour spout provides ease in dispensing liquids
- Excellent chemical resistance for a wide variety of solutions
- Resists temperatures up to 145°C (293°F) for a variety of uses
- 10, 25, 50, 100, 250, 500 and 1000 mL sizes have front-to-back raised graduations
- 2000 and 4000 mL sizes have standard graduations
- Autoclavable/Transparent/Graduated

**Ordering Information:** Individually packaged.

**Compliance:** Meets CFR 21, Part 177.1520 and ASTM\* E 1272 Class B accuracy requirements, as well as requirements of ISO Standard 6706

*Notes: Suitable for food and beverage use. Autoclaving will affect accuracy.*

### Nalgene Graduated Cylinders

Cat. No.	Capacity, mL	Graduations, mL	Limit of Error, mL	No. per Pack	No. per Case
3663-0010	10	0.2	±0.20	1	24
3663-0025	25	0.5	±0.34	1	18
3663-0050	50	1	±0.50	1	18
3663-0100	100	1	±1.00	1	12
3663-0250	250	2	±2.00	1	12
3663-0500	500	5	±4.00	1	8
3663-1000	1000	10	±6.00	1	6
3663-2000	2000	20	±12.0	1	4
3663-4000	4000	50	±29.0	1	2



## ► Thermo Scientific Nalgene Graduated Cylinder

Teflon® PFA



**Nalgene™ Graduated Cylinders have extraordinary chemical resistance to aggressive chemicals and other liquids without risk of breaking.**

This sturdy and durable cylinder tolerates a wide temperature range – from -270°C to +250°C (-454°F to 482°F) and is low in extractables. Graduations at 2 mL increments with numbered graduations every 10 mL are molded-in and won't rub off.

### details

- Extraordinary chemical resistance to aggressive chemicals and liquids – won't break or shatter
- Tolerates a wide temperature range, from -270°C to +250°C (-454°F to +482°F)
- Low in extractables – won't contaminate contents
- Graduations at 2 mL increments with numbered graduations every 10 mL are molded-in and won't rub off
- Generous pour spout provides ease in dispensing liquids
- Autoclavable/Graduated/PFA

Teflon® is a registered trademark of DuPont used under license by Nalge Nunc International Corporation.

### Nalgene Graduated Cylinder

Cat. No.	Capacity, mL	Color	Tolerance	Withstand Temperature	No. per Case
3666-0100	100	Translucent	±1.50 mL	-270° to 250°C (-454° to 482°F)	1

► **Thermo Scientific Nalgene Economy Graduated Cylinders**  
polypropylene copolymer



**Nalgene™ Economy PPCO Cylinders exhibit excellent chemical resistance.**

These cylinders have a generous pour spout for easily dispensing liquids and molded-in graduations that are easy-to-read and won't rub off.

**details**

- Cylinders are translucent, break-resistant and non-wetting at affordable prices
- Economical – recommended for educational labs
- No meniscus to confuse readings allow for accurate measurements
- Good temperature resistance up to 135°C (275°F)
- Large, ribbed, rounded base provides reinforcement and stability to keep from tipping
- Calibrated “To Contain” and “To Deliver” at 20°C
- Graduated

**Nalgene Economy Graduated Cylinders**

Cat. No.	Capacity, mL	Graduations, mL	No. per Pack	No. per Case
3664-0010	10	0.2	1	24
3664-0025	25	0.5	1	18
3664-0050	50	1	1	18
3664-0100	100	1	1	12
3664-0250	250	2	1	12
3664-0500	500	5	1	8
3664-1000	1000	10	1	6

## ► Thermo Scientific Nalgene Economy Graduated Cylinders polymethylpentene



**Nalgene™ Economy PMP Cylinders exhibit good chemical resistance, are clear and impact-resistant.**

These cylinders have a generous pour spout for easily dispensing liquids, and easy-to-read molded in graduations that won't rub off.

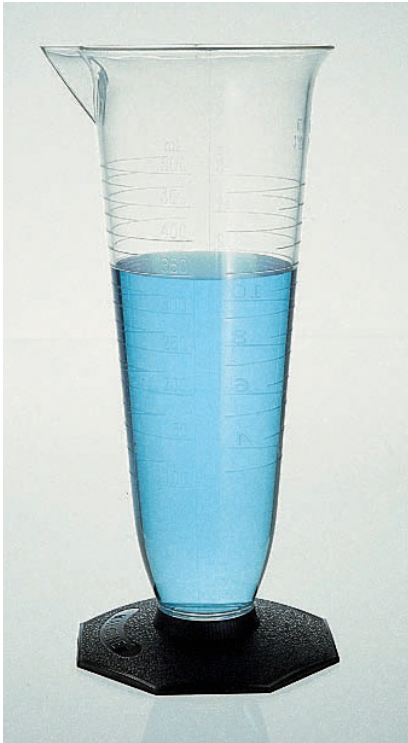
### details

- Cylinders are transparent, break-resistant and non-wetting at affordable prices
- Economical – recommended for educational labs
- No meniscus to confuse readings allow for accurate measurements
- Large, ribbed, rounded base provides reinforcement and stability to keep from tipping
- Calibrated “To Contain” and “To Deliver” at 20°C
- Graduated/Transparent

### Nalgene Economy Graduated Cylinders

Cat. No.	Capacity, mL	Graduations, mL	No. per Pack	No. per Case
3665-0010	10	0.2	1	24
3665-0025	25	0.5	1	18
3665-0050	50	1	1	18
3665-0100	100	1	1	12
3665-0250	250	2	1	12
3665-0500	500	5	1	8
3665-1000	1000	10	1	6

► **Thermo Scientific Nalgene Double-Scale Pharmaceutical Graduates**  
polymethylpentene



**Nalgene™ Double-Scale Pharmaceutical Graduates are transparent and shatterproof and provide excellent chemical resistance.**

Lighter in weight than glass, they protect against chipping, cracking or breaking. Graduated in ounces and milliliters with no meniscus to confuse readings. Meets the requirement of ASTM E1094.

**details**

- Graduates are transparent, shatterproof and provide excellent chemical resistance for a wide variety of solutions
- Lightweight and easy to handle
- Graduated in ounces and milliliters – no meniscus to confuse readings
- Autoclavable/Graduated/Transparent

**Compliance:** Conforms to the volume and accuracy requirements of ASTM E1094.

*Notes: Autoclaving will affect accuracy.*

**Nalgene Double-Scale Pharmaceutical Graduates**

Cat. No.	Capacity, mL (oz.)	Limit of Error, mL	No. per Pack	No. per Case
3673-0004	125 (4)	±1.8	1	12
3673-0008	250 (8)	±3.4	1	12
3673-0016	500 (16)	±4.8	1	8
3673-0032	1000 (32)	±9.0	1	8

## ► Thermo Scientific Nalgene Transparent Classic Design Desiccator polycarbonate



**Nalgene™ Transparent Classic Design Desiccator is a safe and economical alternative to glass.**

Shatterproof and lightweight, this desiccator is easily transportable around the lab and ergonomic to handle. Its grease-free operation keeps your gloves clean and slip-free. Can be used under full vacuum and non-vacuum conditions.

### details

- Lightweight and virtually unbreakable, the wide base provides superior stability
- Similar in dimensions to glass desiccators but more cost-effective
- Includes ports on both cover and base for maximum convenience
- Holds a vacuum of 28 in. Hg (71.1 cm) for 24 hours
- Silicone o-ring ensures an airtight seal; no need to use grease that can contaminate your gloves and your lab
- Removable stopcock can be replaced if needed or removed and the port capped (cap included) if not used
- Transparent

**Recommended for:** Ideal for vacuum and nonvacuum applications. Follow vacuum application instructions included with the product for proper function at full vacuum.

**Ordering Information:** Takes standard 230 mm desiccator plate such as Nalgene Cat. No. 5312-0230 sold separately. Accepts 1/4 in. to 3/8 in. I.D. (0.6 to 1 cm) vacuum tubing, also sold separately.

**Alerts:** Do not autoclave or expose polycarbonate to organic solvents or their vapors. Will not shatter or implode at full vacuum when used according to instructions included with product.

### Nalgene Transparent Classic Design Desiccator

Cat. No.	H, cm (in.)	Inside Dia, cm (in.)	O.D., cm (in.)	Max Clearance Above Plate, cm (in.)	No. per Pack	No. per Case
5311-0250	33 (13)	25 (10)	28 (11)	20 (7-7/10)	1	4
<b>Accessories</b>						
715311-0010	Replacement Stopcock Assembly for 5311-0250				1	2
715311-0250	Replacement Desiccator Cover, 250 mm				2	2

## ► Thermo Scientific Nalgene 230 mm Desiccator Plate

ceramic metal



**Nalgene™ 230 mm Desiccator plate is guaranteed unbreakable.**

Desiccator plate is corrosion resistant and has greater resistance to thermal shock than porcelain.

### details

- 230 mm diameter fits the Nalgene Classic Dessicator (Cat. No. 5311-0250), as well as the 250 mm Nalgene Blue Desiccators (Cat. Nos. 5309-0250 and 5310-0250)
- With numbered quadrants for easy location of crucibles and other containers
- Has six holes in each quadrant and a 3 mm center hole to enhance airflow and drying efficiency
- Autoclavable

**Ordering Information:** Individually packaged.

### Nalgene 230 mm Desiccator Plate

Cat. No.	O.D., mm (in.)	No. per Pack	No. per Case
5312-0230	230 (9-1/16)	1	6

## ► Thermo Scientific Nalgene Autoclavable Desiccators

blue polypropylene body, clear polycarbonate cover



**Nalgene™ Desiccators have a robust polypropylene body and are highly resistant to all solid desiccants.**

These desiccators are much lighter than glass equivalents, making them easy to move around the lab. Desiccators have a transparent PC cover for easily viewing contents.

### details

- Clear polycarbonate cover has recessed rim to keep grease off benchtop when cover is set down
- No gasket required, only grease is needed
- Small desiccator (Cat. No. 5315-0150) comes with a 140 mm aluminum desiccator plate
- Autoclavable

**Alerts:** Do not use concentrated acids as desiccants.

*Notes: Repeated autoclaving will reduce the life of the product.*

### Nalgene Autoclavable Desiccators

Cat. No.	Exterior H, cm (in.)	Inside Dia., cm (in.)	O.D., cm (in)	Max Clearance Above Plate, cm (in)	No. per Pack	No. per Case
5309-0250	26 (10-1/4)	25 (9-7/8)	33 (13)	14.3 (5-5/8)	1	4
5315-0150	15 (5-15/16)	15 (5-15/16)	18 (7-1/8)	8.7 (3-7/16)	1	6



## ► Thermo Scientific Nalgene Labware Value Pack



**A convenient new lab starter pack or refresher pack for established labs.**

The Nalgene™ Labware Value Pack is a useful assortment of popular labware items used in every lab, every day; bundled in a convenient pack and available as a single catalog number. Nalgene Labware is shatterproof and it provides a safer, longer equipment life at lower replacement costs than glass. This labware value pack makes a convenient new lab starter kit or is a great refresher pack for established labs.

### details

- Convenient – order 20 great items with one catalog number
- Cost effective variety of everyday lab items at one low price
- Shatterproof – safer than glass

**Compliance:** Graduated Cylinders Meet CFR 21, Part 177.1520 and ASTM\* E 1272 Class B accuracy requirements as well as ISO Standard 6706. Beakers meet ISO/DIN 7056 International Standards for Laboratory Plasticware Accuracy.

### Nalgene Labware Value Pack

Cat. No.	Qty	Product	Size	Material
1350-0001	6	Straight-Sided Jars	500 mL	PPCO
	4	Unitary Wash Bottles	500 mL	LDPE
	2	Graduated Cylinder	100 mL	PPCO
	1	Graduated Cylinder	500 mL	PPCO
	1	Graduated Cylinder	1000 mL	PPCO
	1	Griffin Low-Form Beaker	50 mL	PPCO
	1	Griffin Low-Form Beaker	100 mL	PPCO
	1	Griffin Low-Form Beaker	250 mL	PPCO
	1	Griffin Low-Form Beaker	600 mL	PPCO
	1	Griffin Low-Form Beaker	1000 mL	PPCO
	1	Unwire™ Half-Rack, Blue	for 30 mm tubes	RMT*

\*Resmer Manufacturing Technology

► **Thermo Scientific Nalgene Desiccator with Stopcock**  
blue polypropylene body



**Nalgene™ Desiccator with Stopcock is lighter in weight than glass and protects against breakage.**

Robust polypropylene body is compatible with all solid desiccants. Transparent PC cover allows a clear view of desiccator contents. Can be used with or without a vacuum. For room temperature use only.

**details**

- Full vacuum may be applied following supplied instructions for proper performance
- Polypropylene stopcock with PTFE Plug can be used with 1/4 in. (6.4 mm) I.D. tubing (tubing sold separately)
- Vacuum connection is located on the desiccator body making the cover easier to handle
- Straight bore design eliminates stopcock vacuum leakage
- No gasket is necessary; grease makes polycarbonate cover airtight even without applying a vacuum
- Recessed rim keeps grease off benchtop when cover is set down
- Desiccator takes any standard 230 mm desiccator plate such as Cat. No. 5312-0230 (sold separately)

**Nalgene Desiccator with Stopcock**

Cat. No.	Exterior H, cm (in.)	Inside Dia, cm (in.)	O.D., cm (in.)	Max Clearance Above Plate, cm (in.)	No. per Pack	No. per Case
5310-0250	26.2 (10-1/4)	24.6 (9-7/8)	33 (13)	14.3 (5-5/8)	1	4
715311-0250	Replacement Desiccator Cover, 250 mm				2	2

**Includes:** Cover and stopcock.

**Requires:** 230 mm plate.

*Notes: For room temperature only, not autoclavable.*

## ► Thermo Scientific Nalgene Desiccator Cabinets

acrylic, stainless steel latches and hinge, neoprene gasket



**Nalgene™ Desiccator Cabinets are clear, with gaskets to provide a tight seal.**

Ideal for storing anhydrous and hygroscopic biological and chemical compounds, as well as electronic assemblies and any components requiring controlled storage conditions.

### details

- Neoprene gasket on door ensures tight seal
- Door is secured with two (three on largest size) stainless steel latches and full-height hinge
- Removable, lipped tray holds solid desiccant in place
- Shelves are removable, adjustable and vented to maximize airflow
- Transparent

**Recommended for:** Ideal for storing anhydrous and hygroscopic biological and chemical compounds, as well as electronic assemblies and any components requiring controlled storage conditions.

**Ordering Information:** All cabinets measure 12 L x 12 in. W (30.5 x 30.5 cm) footprint.

### Nalgene Desiccator Cabinets

Cat. No.	H, cm (in.)	No. of Shelves	No. of Shelf Positions	No. per Case
5317-0070	17.8 (7)	2	3	1
5317-0120	30.5 (12)	3	5	1
5317-0180	45.7 (18)	4	7	1

► **Thermo Scientific Nalgene L900 Liquid Detergent**



**Nalgene™ L900 Liquid Detergent is formulated to thoroughly clean all plastic labware, especially polycarbonate.**

Environmentally-friendly formula will not cause crazing, stress cracking, or clouding of plastic when used as directed.

**details**

- For hand or machine washing
- Biodegradable and non-toxic
- Will not cause crazing, stress cracking or clouding on plastic when used as directed

**Nalgene L900 Liquid Detergent**

Cat. No.	Size, L	No. per Case
900-4000	4	4

## ► Thermo Scientific Nalgene Variable-Volume Dispenser

low-density polyethylene



**Nalgene™ Variable-Volume Dispensers are used for dispensing bases, aqueous solutions, and alcohols.**

Measuring chamber is calibrated in ounces and milliliters. Dispenser is leakproof† when push-pull stopper on end of stem is closed. Ring-tab fits snugly around bottle neck for attaching a label.

### details

- Designed to dispense bases, aqueous solutions and alcohols
- Measuring cup is adjustable on the vertical tube, used for controlling amount of fluid to be dispensed
- Ring-tab fits snugly around bottle neck for attaching a hang tag
- Fill cup by squeezing bottle to force liquid up the tube, release bottle pressure to draw excess liquid out of the top of the tube back into the bottle; desired volume remains in the cup
- Measuring chamber is graduated from 1 to 25 mL in 5 mL increments
- 500 mL reservoir bottle capacity
- Leakproof† (when push-pull stopper is closed for portability)

**Includes:** Low-density polyethylene bottle, graduated transparent polymethylpentene measuring chamber, polyethylene fill tube that connects bottle with chamber, polypropylene stem closure and push-pull stopper.

### Nalgene Variable-Volume Dispensers

Cat. No.	Capacity, mL (oz.)	No. per Pack	No. per Case
3702-0025	500 (16)	1	6