

# Dial Reading Viscometer

our original...over 75 years!

**The World Wide Standard**  
Viscometer

**Easy to Select Speeds**

**Electronic Drive**  
Means quiet, reliable operation

**Analog Display**  
- Shows % Torque  
- Use Factor Finder to convert  
reading to centipoise

**Simple to use, easy setup**

**2 Year Limited Warranty**

**Available in explosion proof**  
U.L. Class 1, Group D locations  
(w/o Electronic Drive)

**Accuracy:  $\pm 1.0\%$  of range**

**Repeatability:  $\pm 0.2\%$**

## Optional Accessories

Viscosity Standards  
RV/HA/HB-1 Spindle  
Quick Action Lab Stand  
Temperature Bath  
Small Sample Adapter  
UL Adapter  
Thermosel  
Helipath Stand with T-bar  
Spindles  
Spiral Adapter  
DIN Adapter  
Quick Connect/Extension  
Links  
Vane Spindles



## What's Included?

Instrument

6 spindles (RV/HA/HB) or 4 spindles (LV)

Spindle Guard Leg\*

Lab Stand (Model A)

Carrying Case

\*Not applicable to HA or HB models

MODEL	VISCOSITY RANGE cP(mPa*s)		SPEEDS	
	Min.	Max.	RPM	Number of Increments
LVT	1†	2M	.3-60	8
RVT	100††	8M	.5-100	10
HAT	200††	16M	.5-100	10
HBT	800††	64M	.5-100	10

† 1 cP achieved with UL Adapter accessory. 15 cP on LV with standard spindles.  
†† Minimum viscosity is achieved with optional RV/HA/HB-1 spindle.  
M = 1 million cP = Centipoise mPa\*s = Millipascal\*seconds



*Easy Speed  
Adjustment  
and On/Off  
Control*



ISO 9001 Certified TEL 800-628-8139 or 508-946-6200 FAX 508-946-6262 [www.brookfieldengineering.com](http://www.brookfieldengineering.com)



Cosmos Supply Co., Ltd.  
[cosmos\\_supply@hotmail.com](mailto:cosmos_supply@hotmail.com)  
[cosmos\\_supply@yahoo.co.th](mailto:cosmos_supply@yahoo.co.th)



QTS Agro Co., Ltd.  
[qts\\_agro@hotmail.com](mailto:qts_agro@hotmail.com)  
[qts\\_agro@yahoo.co.th](mailto:qts_agro@yahoo.co.th)

[www.cosmos-supply.com](http://www.cosmos-supply.com)

# BF35 Viscometer™

measures viscosity of oil drilling and fracturing fluids at atmospheric pressure in both field and laboratory settings

**Easy speed changes** — with convenient control knob

**Shear Stress Values Displayed** on easy-to-read lighted magnified dial

**Maintains a constant shear rate** under varying input power and drilling fluid conditions. Provides drilling fluid engineers with an accurate and versatile tool.

**Conventional oilfield rotor, bob and torsion spring** maintain rheology history and reproducibility between instruments and laboratories

**Sample Cup** —

**Adjustable table height** to accommodate a variety of beaker/containment sizes

### Specifications/Features

**Motor Speeds:** 8 fixed (3, 6, 30, 60, 100, 200, 300, 600)

**Speed Accuracy:** 0.001 (rpm)

**Readout:** Direct dial with light

**Geometry:** True Couette Coaxial Cylinder

**Power:** 97-250 VAC, 50/60 Hz  
(12 volt operation requires special cable)

**Carrying Case:** Included



ISO 9001 CERTIFIED

BROOKFIELD ENGINEERING LABS., INC.

TEL 800-628-8139 or 508-946-6200 FAX 508-946-6262

[www.brookfieldengineering.com](http://www.brookfieldengineering.com)

# NEW DV1™ Viscometer

The only viscometer in its class to offer continuous sensing and data display at such a low price!

## User Configuration Display

- User choice of most important parameter is displayed in larger font size
- Choice of static or scrolling display mode

## Displayed Info:

- Viscosity (cP, P, mPa•s, Pa•s)
- % Torque
- Speed/Spindle
- Temperature (°C or °F)  
if RTD Temperature Probe is purchased

## Choice of Multiple Languages

English, French, German, Portuguese, Russian, Spanish

**USB PC interface** for use with optional Wingather SQ Software

## 18 speeds

provide great range capability

## Optional RTD Temperature Probe DVP-94Y

## Direct access

to time measurement function (time to torque, time to temperature, time to stop)

## Accuracy:

±1.0% of range

## Repeatability: ±0.2%

## Temperature off-set

capability to ±5°C

## Automatic Range Calculation:

- Full Scale Range (FSR) at 100%
- Maximum viscosity measured with Spindle/Speed combination

## Simplified User interface

for more direct access to features

## Printing to Dymo® Printer Capability

## Stylish Model G Base

## What's Included?

Instrument  
6 spindles (RV/HA/HB)  
or 4 spindles (LV)  
Spindle Guard Leg\*  
Lab Stand (Model G)  
Carrying Case

\*Not applicable to HA or HB torque models

## Optional Accessories

Wingather SQ Software ►  
RTD Temperature Probe  
Ball Bearing Suspension (RV/HA/HB)  
EZ-Lock Spindle Coupling System  
Viscosity Standards  
Protective Keypad Covers  
Dymo Printer  
RV/HA/HB-1 Spindle  
Quick Action Lab Stand  
Temperature Bath  
Small Sample Adapter  
UL Adapter  
Thermosol  
Helipath Stand with T-bar Spindles  
Spiral Adapter  
DIN Adapter  
Quick Connect/Extension Links  
Vane Spindles



MODEL	VISCOSITY RANGE cP(mPa•s)		SPEEDS	
	Min.	Max.	RPM	Number of Increments
DV1MLV	1*	2M	.3-100	18
DV1MRV	100	13M	.3-100	18
DV1MHA	200	26M	.3-100	18
DV1MHB	800	104M	.3-100	18

\* Minimum ranges can be extended to as low as 1 cP with the use of Brookfield Accessories

\*\* Standard torque range values

M = 1 million cP = Centipoise mPa•s = Millipascal•seconds



## Wingather SQ Software Optional

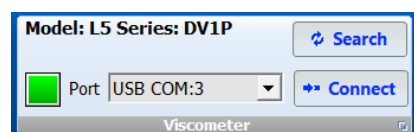
DATA COLLECTION SOFTWARE TO COLLECT, ANALYZE AND RECORD TEST DATA

Wingather software provides an easy way to gather data and plot graphs while creating permanent test records.

Important features and benefits enhance operator versatility in performing viscosity tests:

- Multiple test modes to enhance data collection
- Follow up events including analysis through math models which calculate yield stress and plastic index
- Automatic sample numbering
- Data graphing of up to 20 data sets concurrently
- Data export to spread sheet format (Excel®)

The DV1 Viscometer communicates to the PC through USB A port. The interface cable is supplied with Wingather SQ Software. Successful communication is indicated by a green light beside the port designation.

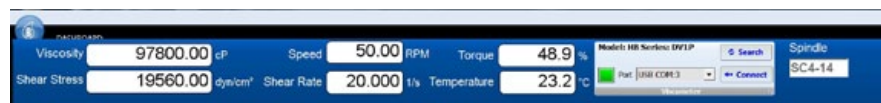


## DV1 CP

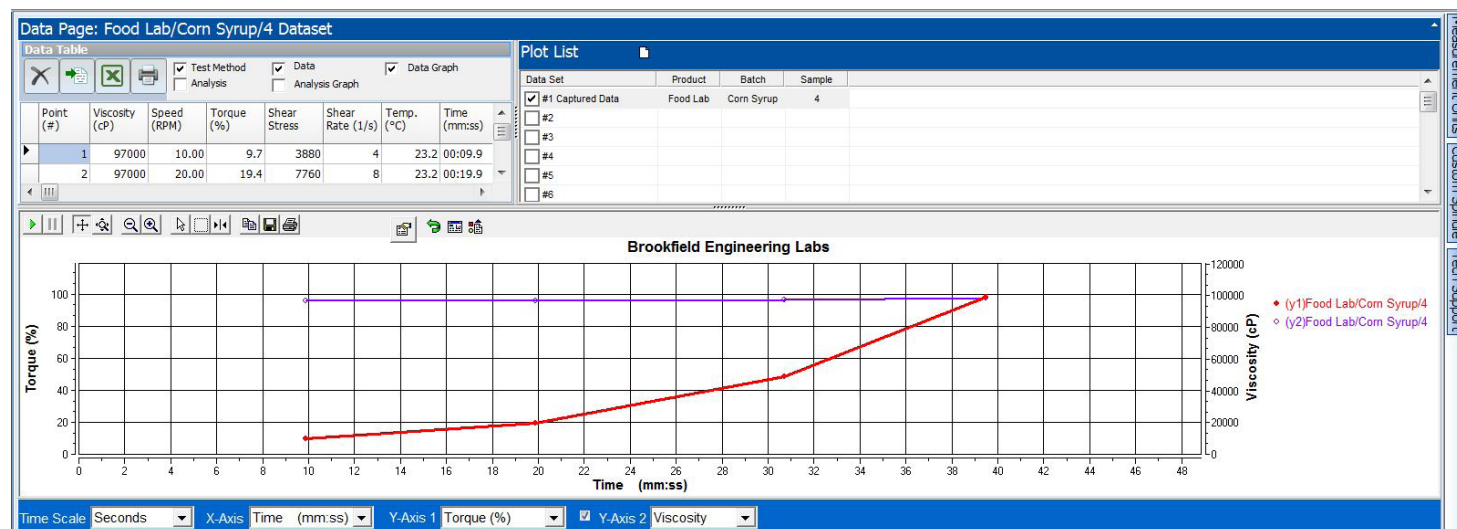
The DV1 is available in a Wells/Brookfield Cone & Plate Version

Must be ordered when instrument is first purchased.

Dashboard shows current test information.



Data table and graph shows test record at a glance.



# NEW DV2T™ Viscometer

our most versatile continuous sensing viscometer

## 5-inch Full Color Touch Screen Display

- New User Interface
- Enhanced Controls
- Real Time Trend Indicator
- Supports Multiple Languages

## Displayed Info:

- Viscosity (cP or mPa•s)
- Temperature (°C or °F)
- Shear Rate/Stress
- % Torque
- Speed/Spindle
- Step Program Status

## Enhanced Security

- Customizable User Access
- Date and Time Stamp File
- Password Access
- Portable Log-in Settings

## Built-in Options

- Timed Tests
- Data Averaging
- Programmable QC Limits/Alarms
- Customizable Speed/Spindle Lists
- Test Based User Instructions
- On Screen Data Comparison

## Auto Range Showing

- Maximum viscosity measured with Spindle/Speed combination

**USB PC Interface** provides optional computer control and automatic data gathering capability



## Convenient Bubble Level

**Download custom test programs** with PG Flash Software (included with instrument)

**Accuracy: ±1.0% of range**  
- Displayed with test data

**Repeatability: ±0.2%**

**Built-in RTD Temperature Probe**

## What's Included?

Instrument

6 spindles (RV/HA/HB)  
or 4 spindles (LV)

PG Flash Software ►

RTD Temperature Probe

Spindle Guard Leg\*

Lab Stand (Model G)

Convenience Pack  
(USB Flash Drive, Stylus, Cleaning Cloth)

Carrying Case

\*Not applicable to HA or HB torque models

## Optional Accessories

RheocalcT Software ►

Label Printer

Vane Spindles

Ball Bearing Suspension (RV/HA/HB)

Viscosity Standards

RV/HA/HB-1 Spindle

EZ-Lock Spindle Coupling System

Quick Action Lab Stand

Temperature Bath

Small Sample Adapter

UL Adapter

Thermosel

Helipath Stand with T-bar Spindles

Spiral Adapter

DIN Adapter

Quick Connect/Extension Links

MODEL	VISCOSITY RANGE cP(mPa•s)		SPEEDS (200 available)	
	Min.	Max.	RPM	Number of Increments
DV2TLV	1†	6M	.1-200	200
DV2TRV	100††	40M	.1-200	200
DV2THA	200††	80M	.1-200	200
DV2THB	800††	320M	.1-200	200

† 1 cP achieved with UL Adapter accessory. 15 cP on LV with standard spindles.

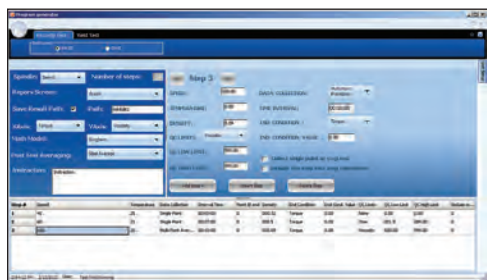
†† Minimum viscosity is achieved with optional RV/HA/HB-1 spindle.

M = 1 million cP = Centipoise mPa•s = Millipascal•seconds

## PG Flash Software Included

PROGRAM GENERATOR SOFTWARE FOR CUSTOMIZING  
TEST CRITERIA FOR ROUTINE PRODUCT QC

This exclusive Brookfield software allows you to create repeatable custom tests on your PC! Once the program (up to 25 steps) is created, it can be downloaded to a supplied USB flash drive and then uploaded to any DV2T Viscometer.



*PG Flash allows users to create repeatable custom tests with all of the built-in options on the DV2T plus the addition of multiple program lines (up to 25 steps). Create the program on the PC and download to a USB Flash Drive. Upload the program from the USB Flash Drive to the DV2T.*

## RheocalcT Software Optional

GET TOTAL CONTROL OF YOUR INSTRUMENT AND TEST PARAMETERS

Automatically control and collect data with RheocalcT and a dedicated computer. RheocalcT can analyze data, generate multiple plot overlays, print tabular data, run math models and perform other time-saving routines. Up to five comparison data sets can be plotted and saved. Other features include:

- Wizards to guide you through the creation of common tests
- Secure 21CFR features including multiple logins, access levels, digital signatures, and data storage in a password-protected database
- Looping functions for repetitive tasks
- Averaging of collected data by step or whole test
- Math models: Bingham, Casson, Casson NCA/CMA, Power Law, IPC Paste, Herschel-Bulkley, Thix Index



## DV2TCP

The DV2T is available in a Wells/Brookfield Cone & Plate Version  
Must be ordered when instrument is first purchased.



## DV2T EXTRA™ Viscometer

The "EXTRA" combines all the versatile viscosity testing capabilities of a DV2T with time and money-saving features such as a durable ball bearing suspension system, EZ-Lock Spindle Coupling, Quick Action Lab Stand and FREE Rheocalc T Software.



# DV-E™ Viscometer

our lowest cost digital viscometer

## No calculations required

- Direct reading of viscosity in cP or mPa-s

## Displayed Info:

- Viscosity (cP or mPa-s)
- % Torque
- Speed/Spindle

## Easy to Use:

- Flip a switch
- Turn a knob

## Spindle/Speed Selection

### Flip to "Speed"

- Turn the knob
- Choose the RPM

### Flip to "Spindle"

- Turn the knob
- Choose the spindle

### Auto Range

push for determining full scale range (FSR) viscosity

**18 speeds** for complete range capability

**Accuracy:**  $\pm 1.0\%$  of range

**Repeatability:**  $\pm 0.2\%$



## What's Included?

### Instrument

6 spindles (RV/HA/HB) or 4 spindles (LV)

Spindle Guard Leg\*

Lab Stand (Model A)

Carrying Case

\*Not applicable to HA or HB models

## Optional Accessories

Viscosity Standards

RV/HA/HB-1 Spindle

Quick Action Lab Stand

Temperature Bath

Small Sample Adapter

UL Adapter

Thermosel

Helipath Stand with T-bar Spindles

Spiral Adapter

DIN Adapter

Quick Connect/Extension Links

Vane Spindles

MODEL	VISCOSITY RANGE cP(mPa•s)		SPEEDS	
	Min.	Max.	RPM	Number of Increments
LVDV-E	1†	2M	.3-100	18
RVDV-E	100††	13M	.3-100	18
HADV-E	200††	26M	.3-100	18
HBDV-E	800††	104M	.3-100	18

† 1 cP achieved with UL Adapter accessory. 15 cP on LV with standard spindles.

†† Minimum viscosity is achieved with optional RV/HA/HB-1 spindle.

M = 1 million cP = Centipoise mPa•s = Millipascal•seconds



ISO 9001 Certified

TEL 800-628-8139 or 508-946-6200 FAX 508-946-6262 www.brookfieldengineering.com



Cosmos Supply Co., Ltd.  
cosmos\_supply@hotmail.com  
cosmos\_supply@yahoo.co.th



QTS Agro Co., Ltd.  
qts\_agro@hotmail.com  
qts\_agro@yahoo.co.th

www.cosmos-supply.com