



Cosmos Supply Co., Ltd.
cosmos_supply@hotmail.com
cosmos_supply@yahoo.co.th



QTS Agro Co., Ltd.
qts_agro@hotmail.com
qts_agro@yahoo.co.th

www.cosmos-supply.com

India's most
Trusted Laboratory Brand



www.borosil.com

BOROSIL group is the leading manufacturer of specialty glassware in India today. In the scientific arena with over 50 years of experience, BOROSIL currently caters to the most demanding needs of the Research & Development, Industrial, Pharma, Health Care & Education segments of the market with their most comprehensive range of laboratory glass and glass ware products manufactured from 3.3 expansion borosilicate glass. BOROSIL today gives, amongst a diverse range of products, a wide option of certified products as per ISO / DIN / ASTM / IS standards and ground joint items to ensure that the customers' requirements are catered to.

The recent addition of the NABL accreditation facility, where NABL is a signatory to International Laboratory Accreditation Co-operation (ILAC) and Asia Pacific Laboratory Accreditation Co-operation (APLAC) speaks about the standards maintained.

Its export to over 40 countries, itself is a testimonial of the quality and service standards provided.



Pioneers in speciality glass

Dishes

Borosil® brand Dishes are designed to fulfil your wide-ranging needs - Crystallizing, Evaporating, Drying, Storing, Petri dishes for culture, assay and micro-biological works. All **Borosil®** brand Dishes are safe, durable and economical.

Borosil® brand Dishes are inert, can be sterilised and remain clear even after repeated use and washing. With each subsequent use, the cost per Dish decreases.

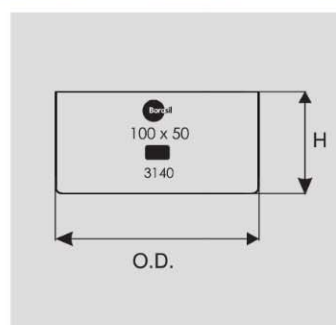




3140 - Dishes, Crystallizing

- Reinforced and fire-polished rims reduce chipping
- Large labelling field for easy marking
- Very high chemical resistance
- High resistance to thermal shocks

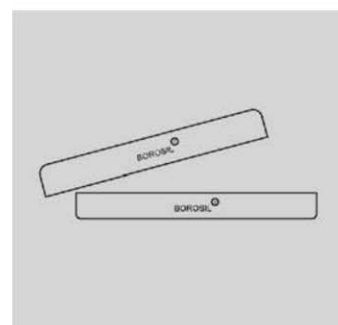
Product Code	Approx O.D. x Height mm	Quantity Per Case
3140077	100 x 50	10
3140081	150 x 75	10
3140086	190 x 100	4

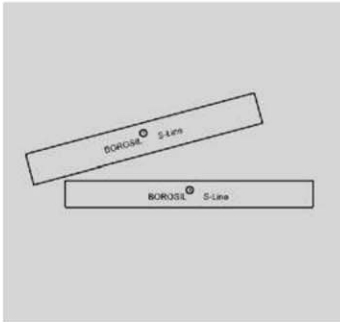


3160 - Dishes, Culture, Petri

- Complies with IS 2626
- These Dishes are clear and withstand repeated sterilisation (wet or dry)
- Made of 3.3 borosilicate glass using a special manufacturing process
- Beaded edges impart greater mechanical strength
- Ideal for use in routine work
- Specially form to ensure even wall thickness and consistent optical performance

Product Code	Approx O.D. x Height mm	Quantity Per Case
3160065	50 x 17	100
3160072	80 x 17	100
3160077	100 x 17	100
3160081	150 x 20	40
3160087	200 x 20	10






3165 - Dishes, Culture Petri, Borosil S-Line

- The inner surface of these Dishes has a very close flatness tolerance
- The accuracy of many biological assays depends on the flatness of the inside base of the Petri dish
- Made of soda lime glass ensuring that the inner surface of the top and base are absolutely flat
- These Dishes have high clarity and are free of bubbles
- Ideal for use in routine work

Product Code	Approx O.D. x Height mm	Quantity Per Case
3165065	50 x 12	100
3165072	80 x 15	100
3165077	100 x 15	100
3165081	150 x 25	40
3165087	200 x 30	10





S-LINE PETRI DISHES

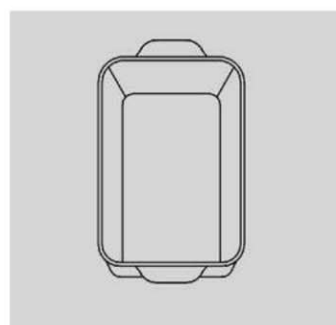
Certified | Type I Glass | USP & EP Compliant | Easy Ordering | Wide Compatibility



3170 - Trays, Drying, Heavy Wall

- The trays withstand hot air or steam sterilization
- Facilitates paper chromatography
- Dimensions are approximate, representing the inside length x width x height in mm

Product Code	Approx Dimension mm	Approx Capacity ml	Quantity Per Case
3170044	320 x 180 x 51	1500	5
3170043	350 x 200 x 58	2400	5
3170042	386 x 217 x 63	3000	5
3170041	404 x 257 x 61	3500	5



3180 - Dishes, Evaporating, Flat Bottom, With Pour Out

- Made of 3.3 borosilicate glass
- Very high chemical resistance
- High resistance to thermal shocks
- Designed with a spout to facilitate clean pouring
- Withstand to repeated sterilisation (Wet or dry)
- Beaded edge give greater mechanical strength
- Ideal for use in routine work

Product Code	Approx O.D. x Height mm	Quantity Per Case
3180072	80 x 45	10
3180078	105 x 55	10
3180081	150 x 80	10
3180087	200 x 100	8



Distilling Apparatus

Most of the distillation equipment required in an average laboratory can be constructed using standard Borosil components. Distillation assemblies for specific applications are available as complete units, as listed herein.

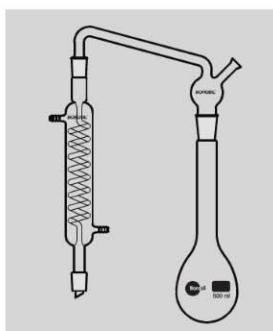




3340 - Distilling Apparatus, Ammonia, With Graham Condenser, Interchangeable Joints

- Ideal for determining nitrogen in organic compounds
- Digestion and distillation stages can be performed in this apparatus
- The inlet tube allows permanganate solution to be introduced after distillation

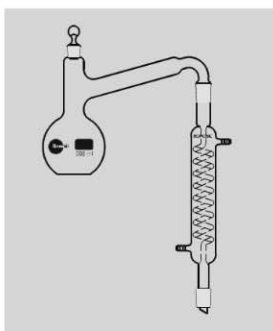
Product Code	Capacity ml	Quantity Per Case
3340024	500	2 Set



3360 - Distilling Apparatus, With Graham Condenser, Interchangeable Joints, Interchangeable Stopper

- Ideal for batch production of high purity distilled water
- General purpose Batch Distillation Assembly equipped with an interchangeable stoppered neck that facilitates addition
- The Flask has a flat base with a delivery tube on the side

Product Code	Capacity ml	Condenser Jacket mm	Interchangeable Joint	Quantity Per Case
3360024	500	200	19 / 26	2 Set

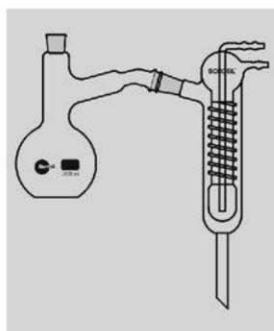




3380 - Distilling Apparatus, With Friedrichs Condenser, Interchangeable Joint, Interchangeable Stopper

- Ideal for batch production of high purity distilled water
- General purpose Batch Distillation Assembly equipped with an interchangeable stoppered neck that facilitates addition
- The Flask has a flat base with a delivery tube on the side
- Comes with Friedrich's Spiral Condenser for higher distillation rates

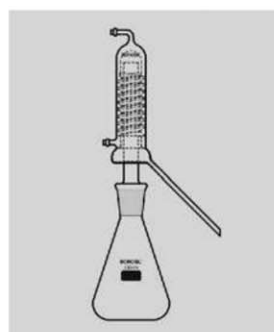
Product Code	Capacity ml	Interchangeable Joint	Quantity Per Case
3380030	2000	24 / 29	1 Set



3440 - Distilling Apparatus, Compact With Friedrichs Condenser, Interchangeable Joint

- A compact distillation assembly with specially designed Friedrich's Condensers
- This Condenser is designed with vapour tubing rising at the top
- A 1000 ml Erlenmeyer Flask is provided with an interchangeable 34/35 joint

Product Code	Capacity ml	Interchangeable Joint	Quantity Per Case
3440029	1000	34 / 35	2 Set





3450 - Essential Oil Determination Apparatus (Clevenger Apparatus), For Oil Heavier Than Water

- This apparatus is ideal for estimation of volatile oil that is heavier than water
- Comes with a 5 ml Receiver with stopcock, an Oil Separator Tube, a condenser and 1000 ml flask

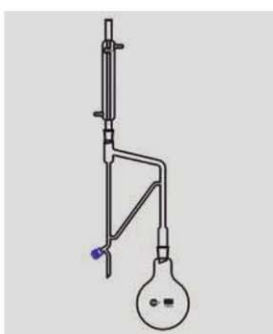
Product Code	Capacity ml	Quantity Per Case
3450029	1000*	1 Set
3450030	2000	1 Set
3450033	5000	1 Set
3450038	10000	1 Set
3450040	20000	1 Set



3451 - Essential Oil Determination Apparatus (Clevenger Apparatus), For Oil Lighter Than Water

- Ideal for estimation of volatile oil that is lighter than water
- Comes with a 5 ml Receiver with stopcock, an Oil Separator Tube, a condenser and 1000 ml flask

Product Code	Capacity ml	Quantity Per Case
3451029	1000*	1 Set
3451030	2000	1 Set
3451033	5000	1 Set
3451038	10000	1 Set
3451040	20000	1 Set

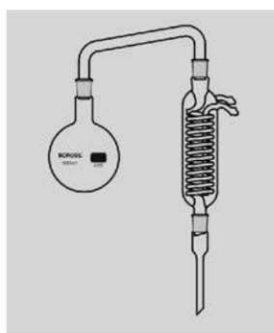




3452 - Alcohol Distillation Unit

- Ideal for distilling alcohol in the laboratory to produce the purest grade
- Thorpe's revenue still for purification of ethyl alcohol popularly used in pharmaceutical industries

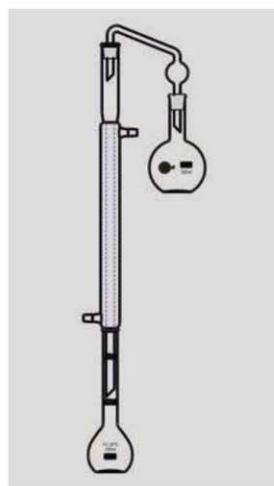
Product Code	Capacity ml	Quantity Per Case
3452029	1000	1 Set



3454 - R M Value Apparatus

- Ideal for use in dairy industries
- Facilitates the determination of butter fat, and the analysis of oil, fat and waxes

Product Code	Capacity ml	Quantity Per Case
3454022	300	1

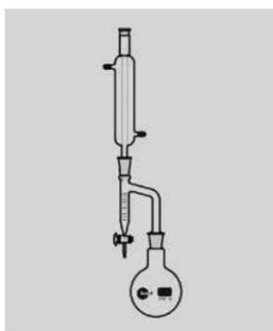


**3602 - Distilling Apparatus, Dean And Stark, Moisture Test, (As Per I.P. Specifications)**

- Made of 3.3 borosilicate glass
- Uniform wall distribution of the Flask makes it suitable for heating
- Consists of a graduated 10 ml Receiver with 0.1 intervals

Product Code	Capacity of Receiver ml	Quantity Per Case
3602006	10	2 Set

Consists of receiver 10 ml graduated with 19 / 26 outer joint and 24 / 29 inner joint, round bottom flask 1000 ml with 24 / 29 outer joint and Liebig condenser 200 mm with 19 / 26 joint. The 10 ml receiver is graduated from 1 ml to 10 ml in 0.1 ml intervals.



Water Distillation Purification Systems

Economy Water Stills

Distillation removes water miscible organics and ionisable inorganic impurities, as well as colloidal solids from water.

Borosil Glass Distillation Units continue to be the most effective and economical method of producing ultra pure water for laboratory use.

By contrast, De-ionisers are effective only in removing those substances that are ionised. Moreover, the resins contribute organic impurities to water, resulting in an environment conducive to bacterial growth in course of time.

Borosil Distillation Units are designed to produce a distillate of consistent purity. The Unit consists of horizontal Borosilicate Boilers, Condensers and a Quartz Heater. All the parts are replaceable.

Advantages

- Compact and easy to use
- Economical and ideal for colleges and general laboratory use
- Powder-coated stand for rust-free operation
- Provision for easy cleaning of the Boiler





3361 - All Glass Single Distillation Unit, With Borosilicate Boiler, Borosilicate Condenser & Quartz Heater, Horizontal Type

Cat No.	3361 - 1.5 L	3361 - 4.0 L
Dist. Water Output Cap.(Approx)	1.5 lt/hr.	4 lt/hr
Electrical requirements	230-250 volts Single phase 1.5kw Quartz heater	230-250 volts Single phase 3.5 kw Quartz heater
Minimum Cooling Water requirement	1 Lit / min	2 Lit / min
Biological Activity	Pyrogen Free	Pyrogen Free
Conductivity S/cm	$<3 \times 10^{-6}$	$<3 \times 10^{-6}$
Distillate Temp.	65-75°C	65-75°C

Product Code	Cat No.	Output Capacity (Lt/Hr)	Total Power Consumed (kw)	Quantity per case
3361041	3361	1.5	1.5	1
3361032	3361	4.0	3.5	1

Standard Accessories for Cat No. 3361

Distillation Apparatus Power Supply (DAPS) enables the Distillation Unit to function automatically by switching off the heater in case the water level falls below the heating coil, thereby safeguarding the heaters.

- The sensor rods are adjusted above the heater levels, and operate on 12 Volt power supply
- DAPS emits a buzzer sound alert to indicate low water level
- The Unit is unique for each model

Product Code	Cat No.	Output Capacity (Lt/Hr)	Description
3366141	3361	1.5	Distillation Apparatus Power Supply (DAPS)
3366132	3361	4.0	Distillation Apparatus Power Supply (DAPS)

Spares for Distillation unit for Cat No. 3361

Product Code	Cat No.	Output Capacity (Lt/Hr)	Description
0336011	3361	1.5	Borosilicate Boiler with Water Leveller
0361021	3361	1.5	Condenser
0336012	3361	1.5	Quartz new type heater B-34
0336021	3361	4.0	Borosilicate Boiler with Water Leveller
0362021	3361	4.0	Condenser
0336022	3361	4.0	Quartz new type heater B-50



3362 - All Glass Double Distillation Unit, With Borosilicate Boiler, Borosilicate Condenser & Quartz Heater, Horizontal Type

Cat	3362 1.5 L	3362 - 4.0 L
Dist. Water Output cap.(Approx)	1.5 lt/hr	4 lt/hr
Electrical Requirements	230-250 volts Single phase 1.5x2 kw Quartz heater	230-250 volts single phase 3.5x 2kw Quartz heater
Minimum Cooling		
Water requirement	2 Lit / min (EA)	2.5 Lit / min (EA)
Biological Activity	Pyrogen Free	Pyrogen Free
Conductivity S/cm	$<1 \times 10^{-6}$	$<1 \times 10^{-6}$
Distillate Temp	65-75°C	65-75°C

Product Code	Cat No.	Output Capacity (Lt/Hr)	Total Power Consumed (kw)	Quantity per case
3362041	3362	1.5	$1.5 \times 2 = 3$	1
3362032	3362	4.0	$3.5 \times 2 = 7$	1

Standard Accessories for Cat No. 3362

Distillation Apparatus Power Supply (DAPS) enables the Distillation Unit to function automatically by switching off the heater in case the water level falls below the heating coil, thereby safeguarding the heaters.

- The sensor rods are adjusted above the heater levels, and operate on 12 Volt power supply
- DAPS emits a buzzer sound alert to indicate low water level
- The Unit is unique for each model

Product Code	Cat No.	Output Capacity (Lt/Hr)	Description
3366241	3362	1.5	Distillation Appartus Power Supply (DAPS)
3366232	3362	4.0	Distillation Appartus Power Supply (DAPS)

Spares for Distillation unit for Cat No. 3362

Product Code	Cat No.	Output Capacity (Lt/Hr)	Description
0336011	3362	1.5	Borosilicate Boiler with Water Leveller
0361021	3362	1.5	Condenser
0336012	3362	1.5	Quartz new type heater B-34
0336021	3362	4.0	Borosilicate Boiler with Water Leveller
0362021	3362	4.0	Condenser
0336022	3362	4.0	Quartz new type heater B-50

MONO QUARTZ DISTILLATION UNIT

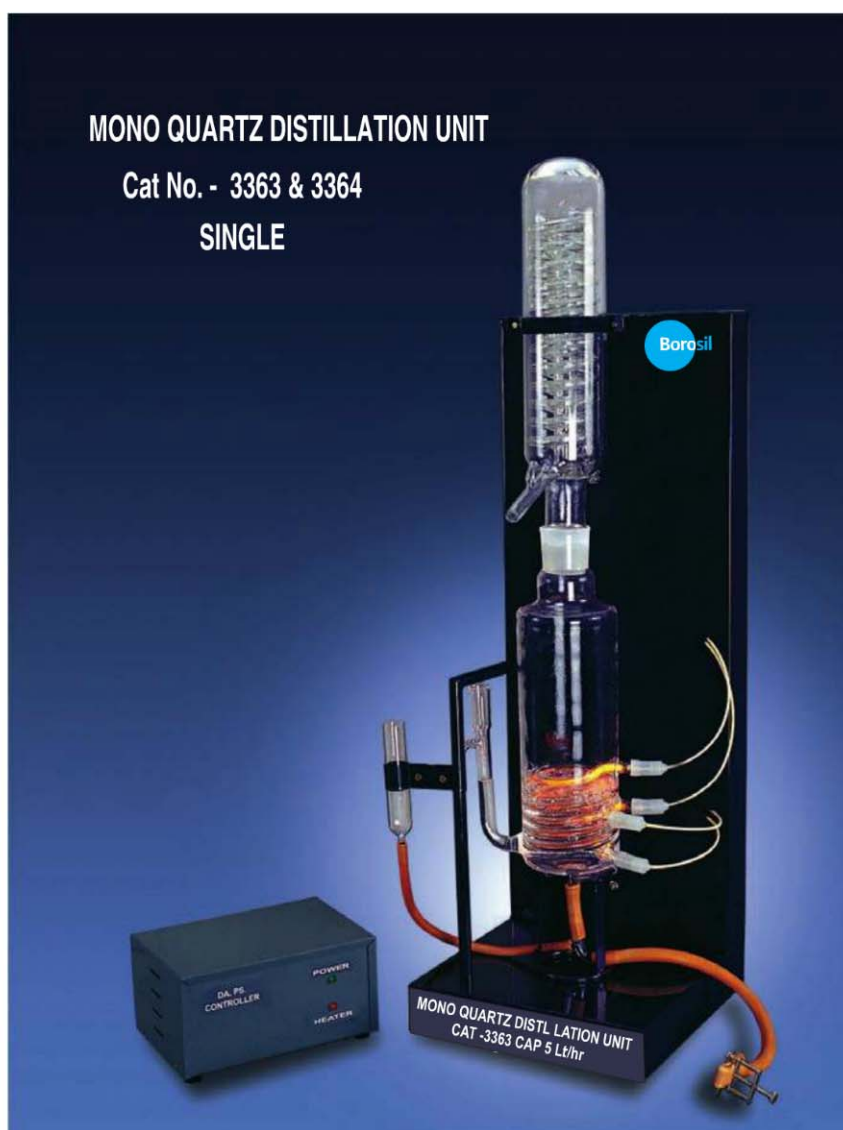
The supply of pyrogen-free distilled water is a basic requisite for Research, Analytical and Industrial Laboratories. Distilled water from metallic units does not meet the required standards. Moreover, such units are bulky and cumbersome.

Borosil Mono Quartz Distillers are very compact and are constructed of high purity quartz, thereby meeting the standard of analytical laboratories, where the purity of distilled water that is free from metallic ions and bacteria, is the chief criterion.

The Boiler is made of high purity quartz and the Condenser is made of borosilicate/quartz material. The built-in heater ensures minimum loss of heat, and production of distilled water in 2 to 3 minutes. The Unit is mounted on a powder-coated metal stand with electrical connections, and is easy to dismantle and assemble. The fibre glass insulated wire and silicone rubber boot resist high temperatures.

Advantages

- Instant output of distilled water
- Free of pyrogen and heavy metals
- Efficient borosilicate/quartz Coil Condenser
- Powder-coated stand for rust-free operation





3363 - Mono Quartz Distillation Unit, Panel Mounted with Quartz Boiler & Borosilicate Condenser, Vertical Model

Cat No.	3363 - 2.5 L	3363 - 5 L	3363 - 10 L
Dist. Water Output Cap.(Approx)	2.5 lt/ hr	5 lt/hr	10lt/hr
Electrical Requirements	230-250 volts single phase 2.2 kw	230-250 volts single phase 4.4 kw	440 volts 3phase 8.8 kw
Minimum Cooling Water requirement	1 Lit / min	2 Lit / min	2.5 Lit / min
Biological Activity	Pyrogen Free	Pyrogen Free	Pyrogen Free
Conductivity S/cm	<3 x 10 ⁻⁶	<3 x 10 ⁻⁶	<3 x 10 ⁻⁶

Product Code	Cat No.	Output Capacity (Lt/Hr)	Total Power Consumed (kw)	Quantity per case
3363042	3363	2.5	2.2 x 1 = 2.2	1
3363033	3363	5.0	2.2 x 2 = 4.4	1
3363038	3363	10	2.93 x 3 = 8.8	1

Standard Accessories for Cat No. 3363

Distillation Apparatus Power Supply (DAPS) enables the Distillation Unit to function automatically by switching off the heater in case the water level falls below the heating coil, thereby safeguarding the heaters.

- The sensor rods are adjusted above the heater levels, and operate on 12 Volt power supply
- DAPS emits a buzzer sound alert to indicate low water level
- The Unit is unique for each model

Product Code	Cat No.	Output Capacity (Lt/Hr)	Description
3366342	3363	2.5	Distillation Appartus Power Supply (DAPS)
3366333	3363	5.0	Distillation Appartus Power Supply (DAPS)
3366338	3363	10.0	Distillation Appartus Power Supply (DAPS)

Spares for Distillation unit for Cat No. 3363

Product Code	Cat No.	Output Capacity (Lt/Hr)	Description
0363012	3363	2.5	Quartz Boiler
0362022	3363	2.5	Borosilicate Condenser
0363032	3363	5.0	Quartz Boiler
0363S00	3363	5.0	Borosilicate Condenser
0363S02	3363	10.0	Quartz Boiler
0363S03	3363	10.0	Borosilicate Condenser

3364 - Mono Quartz Distillation Unit, Panel Mounted with Quartz Boiler And Quartz Condenser, Vertical Model

Cat No.	3364 - 2.5L	3364 - 5L
Dist.Water Output.cap (Approx)	2.5lt/hr	5lt/hr
Electrical Requirements	230-250 volts single phase 2.2kw	230-250 volts single phase 4.4kw
Minimum Cooling water requirement	1Lit / min	2 Lit / min
Biological Activity	Pyrogen Free	Pyrogen Free
Conductivity S/cm	$<2 \times 10^{-6}$	$<2 \times 10^{-6}$

Product Code	Cat No.	Output Capacity (Lt/Hr)	Total Power Consumed (kw)	Quantity per case
3364042	3364	2.5	2.2	1
3364033	3364	5.0	$2.2 \times 2 = 4.4$	1



Water Distillation Unit

Standard Accessories for Cat No. 3364

Distillation Apparatus Power Supply (DAPS) enables the Distillation Unit to function automatically by switching off the heater in case the water level falls below the heating coil, thereby safeguarding the heaters.

- The sensor rods are adjusted above the heater levels, and operate on 12 Volt power supply
- DAPS emits a buzzer sound alert to indicate low water level
- The Unit is unique for each model

Product Code	Cat No.	Output Capacity (Lt/Hr)	Description
3366442	3364	2.5	Distillation Apparatus Power Supply (DAPS)
3366433	3364	5.0	Distillation Apparatus Power Supply (DAPS)

Spares for Distillation unit for Cat No. 3364

Product Code	Cat No.	Output Capacity (Lt/Hr)	Description
0363012	3364	2.5	Quartz Boiler
0364023	3364	2.5	Quartz Condenser
0363032	3364	5.0	Quartz Boiler
0364501	3364	5.0	Quartz Condenser

ALL QUARTZ DOUBLE DISTILLATION UNIT

The supply of pyrogen-free distilled water is a basic requisite for research, analytical and industrial laboratories. Moreover, care should be taken while choosing the materials of the Distillation Apparatus and storage vessels, so as to prevent diffusion of impurities into the distillate.

Quartz Distillation Units are manufactured with imported fused quartz tubes. The exceptionally high chemical purity and very low solubility of this material result in the production of a very high performance system. The greatest possible attention has been taken to ensure good technical performance, simplicity of use and efficiency.





3365 - All Quartz Double Distillation Unit, Demountable Boiler Panel series, Vertical Model

Cat No.	3365 1.5L	3365 2.5 L	3365 5 L
Dist.Water Output Cap.(Approx)	1.5 lt/hr	2.5 lt/hr	5 lt/hr
Electrical Requirements	230-250 volts single phase 3 kw	230-250 volts single phase 4.4 kw	440 volts 3 phase 8.8 kw
Minimum Cooling Water requirement	1 Lit / min	2 Lit / min	2.5 Lit / Min (EA)

Distillate Quality Specifications

Biological Activity	Pyrogen Free
Conductivity S/cm	<1x10 ⁻⁶
Total Organic Carbon (TOC) µg/l	<500
Organic Matter mg/lit	Nil
Total Solids mg/lit	< 0.1
Distillate Temp.	65-75°C
Total plate count	0
Standard Plate Count	0
Yeast and Mould	0
KMnO 4 color retention	1 hr
UV absorbance at 254 nm	0.007

**** The results mentioned in specifications are obtained under standard laboratory conditions**

Product Code	Cat No. No.	Output Capacity (Lt/Hr)	Total Power Consumed (kw)	Quantity per case
3365041	3365	1.5	1.5 x 2 = 3.0	1
3365042	3365	2.5	2.2 x 2 = 4.4	1
3365033	3365	5.0	2.2 x 4 = 8.8	1

NOTE : Because of difficulties associated with measurement of the pH value of high purity water and the doubtful significance of the values obtained, limits for the pH value of grade 1 and grade 2 water have not been specified.



Standard Accessories for Cat No. 3365

Distillation Apparatus Power Supply (DAP) enables the Distillation Unit to function automatically by switching off the heater in case the water level falls below the heating coil, thereby safeguarding the heaters.

- The sensor rods are adjusted above the heater levels, and operate on 12 Volt power supply
- DAPS emits a buzzer sound alert to indicate low water level
- The Unit is unique for each model

Product Code	Cat No.	Output Capacity (Lt/Hr)	Description
3366541	3365	1.5	Distillation Apparatus Power Supply (DAPS)
3366542	3365	2.5	Distillation Apparatus Power Supply (DAPS)
3366533	3365	5.0	Distillation Apparatus Power Supply (DAPS)

Spares for Distillation unit for Cat No. 3365

Product Code	Cat No.	Output Capacity (Lt/Hr)	Description
0362013	3365	1.5	Primary Boiler
0362015	3365	1.5	Secondary Boiler
0362063	3365	1.5	Receiving Adapter with spring
0362014	3365	2.5	Primary Boiler
0362016	3365	2.5	Secondary Boiler
0362063	3365	2.5	Receiving Adapter with spring
0362S04	3365	5.0	Primary Boiler
0363S05	3365	5.0	Secondary Boiler
0362063	3365	5.0	Receiving Adapter with spring
0362052	3365		Silicon 'O' Ring

Whether obtained through distillation, the De-ioniser or reverse osmosis, pure water is an excellent solvent and will readily dissolve carbon dioxide from the atmosphere to form a very dilute solution of carbonic acid with pH below 7.

The pH of high purity water cannot be measured by simply dipping the electrodes of a pH meter into a beaker full of water. Such measurement is challenging due to the quasi-absence of ions that would enable electron transport between the measuring and reference sides of the pH electrode. This often results in erratic and meaningless pH readings. However, using water high resistivity ($18.2 \Omega \text{ M cm}$ at 25°C) ensures that the pH is close to 7.0. A slightly acidic pH value does not mean that the water is grossly contaminated, as CO_2 level of less than 1 ppm will display pH in acidic range.

It is recommended to use pre-treated water with TDS less than 50 ppm to prevent scale formation in the boiler and improve the quality of distillate.

3367 - Water Softener

The newly designed Water Softener works on the Ion Exchange principle, and is used along with Quartz or Glass distillers. The Water Softener prevents the accumulation of sludge (i.e. deposits of Calcium and Magnesium salts that make the water hard). Tap water / borewell water is introduced through the inlet and softened water is drawn at the outlet. The softened water is sent into the Boiler of the Distillation Unit. The Unit can be recharged again with a saturated solution of Sodium Chloride. The Unit delivers approximately 2000 litres of soft water for one cycle of regeneration. The output is based on 100 ppm input hardness as CaCO_3 .

During regeneration, 20 litres of sodium chloride solution is passed through the Water Softener gradually, for 1 hour.

Product Code	Cat No.	Quantity Per case
3367000	3367	1



Water Distillation Unit

3368 - Aquatherm Heat Exchanger

Aquatherm Heat Exchangers can be used with Distillation Units. The hot water released from the Condenser outlet is usually let into the Sink, thereby wasting precious water. However, Aquatherm Heat Exchanger is equipped with Cooling Coils and a Fan that cool the hot water as it comes out, and then pump it back into the Condenser inlet, thus saving water.

Advantages: It can be mounted on a table to occupy less space. The power consumption is minimal. It takes only 15 litres of water to run the Distillation Unit (Single or Double).

Product Code	For Cat No.	Total Power Consumed (kw)	Quantity per case
3368000	3361 - 1.5 / 4L	365 watts	1
	3362 - 1.5 L		1
	3364 - 2.5 / 5 L		1
	3365 - 1.5 / 2.5 L		1
	3363 - 2.5 / 5 L		1
	3362 - 4 L		1
3368001	3365 - 5 L	730 watts	1
	3363 - 10 L		1



3369 - Silicone tubing for distillation unit & laboratory application



*Heat Resistance Temperature Range : -40°C To +205°C

The technical data given by Borosil must be used as a guide only. Borosil does not guarantee the accuracy of information and is not responsible for its end use.

Silicone tubing is used for laboratory and industrial applications only. It should not be used for implants , human reproductive system and other medical applications.

3369003 - 8mm x 12mm is used for 3361-1.5, 3362-1.5, 3363-2.5 series

3369004 - 10mm x 14mm is used for 3361-4l, 3362-4l, 3364-2.5l, 5l, 3365-1.5l,2.5l,5l, 3363-5l,10l.

Product Code	For Cat No.	Size	Quantity per case in mtr
3369001	3369	4mm ID x 7mm OD	10
3369002	3369	6 mm ID x 9 mm OD	10
3369003	3369	8 mm ID x 12 mm OD	10
3369004	3369	10 mm ID x 14 mm OD	10



3370 - Cabinet Still



- Compact
- Economical
- Ease Of Maintenance
- Made From Borosilicate Glass
- High Purity Yield
- Automatic operation

- Designed with an inbuilt level sensor and cut-off device in case the water in the Boiler drops below the desired level
- Cleaning is easier due to the integral funnel that facilitates addition of acid to the Boiler and rota-flow stopcock for draining out sediments
- Available in Single Distillation model with output capacity of 4 lit/hr
- Conductivity is 1-3 μS in case of Single Distillation
- The unique design of the Condenser ensures effective cooling and low distillate temperature
- Pyrogen-free output
- The acrylic safety screen and cabinet lid are removable, enabling easy access to the glassware components

Cat No.	3370 - 4.0 L
Dist. Water Output Cap.(Approx)	4 lt/hr
Electrical requirements	230-250 volts Single phase 3 kw Quartz heater
Cooling	
Water consumption	2 Lit / Min
Biological Activity	Pyrogen Free
Conductivity S/cm	$<3 \times 10^{-6}$
Distillate Temp.	65-75°C

Product Code	Cat No.	Output Capacity (Lt/Hr)	Total Power Consumed (kw)	Quantity per case
3370032	3370	4	3	1

Spares for Cabinet Still Cat No. 3370

Product Code	Cat No.	Output Capacity (Lt/Hr)	Description
3370S01	3370	4	Borosilicate Boiler With Leveller - Cabinet 4L
3370S02	3370	4	Borosilicate Condenser - Cabinet 4L
3370S03	3370	4	Quartz B - 50 Heater - Cabinet 4 L
3370S04	3370	4	DAPS - Cabinet 4 L

Extractors

Liquid Solid Extraction involves the elution of a solid sample with pure solvent vapour. The sample is held in the Extractor body either directly or in a thimble. The siphoning type of Soxhlet Extractor finds the widest application in laboratory work.

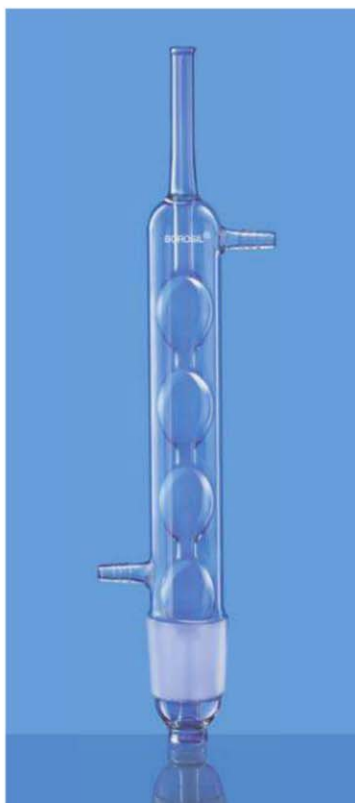
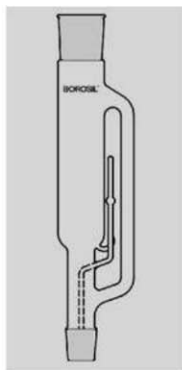
Borosil Soxhlet Extraction Apparatus is available in six sizes. The component parts of the apparatus are provided with interchangeable joints for greater flexibility.



3740 - Extractors, Soxhlet, Interchangeable Joint

- Complies with IS 10640
- Made of borosilicate glass
- Designed with a bulb in the siphon tube near the top, to aid the siphoning action
- The vapour tube also protects the siphon tube from accidental damage

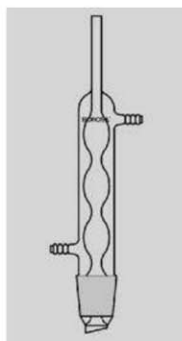
Product Code	Capacity ml	Interchangeable Joints		Quantity Per Case
		Top	Bottom	
3740013	60	34 / 35	24 / 29	5
3740016	100	40 / 38	24 / 29	5
3740020	200	50 / 42	24 / 29	5



3741 - Condensers, Allihn Only For Extraction Apparatus

- Made of borosilicate glass
- Greater surface area than the Liebig Condenser owing to a series of bulbs, resulting in higher cooling capacity
- Ideal for laboratory scale refluxing

Product Code	Capacity ml	Interchangeable Joints	Quantity Per Case
		Bottom	
3741013	Small	34 / 35	5
3741016	Medium	40 / 38	5
3741020	Large	50 / 42	5





3840 - Extraction Apparatus Soxhlet Complete With Allihn Condenser, Interchangeable Joint

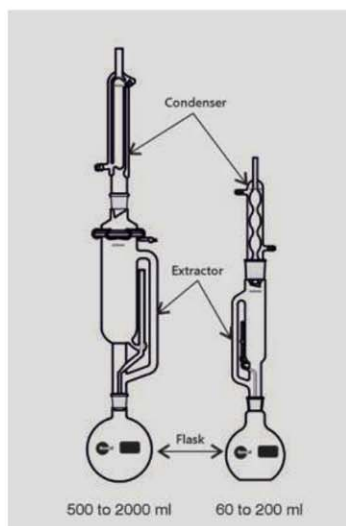
- Complies with IS 10640
- Used for separation of the extract from the liquid or solid
- Greater surface area than the Liebig Condenser owing to a series of bulbs, resulting in higher cooling capacity
- This method enables effective separation, with relatively small quantities of solvent
- Ideal for laboratory scale refluxing

Product Code	Capacity ml	Flask Size	Quantity Per Case Set
3840013	60*	150	1
3840016	100*	250	1
3840020	200*	500	1
3840024	500**	2000	1
3840029	1000**	3000	1
3840030	2000**	5000	1

*For flask refer Cat No. 4100

**Extractor Supplied are supplied with double surface condenser for higher cooling capacity.

Loose spares can be provided on request.



Flasks

All laboratories need Flasks of different types. **Borosil** offers a wide range of Flasks for a variety of applications such as boiling, culture, distilling, Erlenmeyer, Filtering, Iodine and Kjeldahl. Choose one to suit your needs.

Borosil brand Flasks are designed to deliver the best combination of thermal shock resistance, physical strength and resistance to chemical attack. They are made so as to withstand the demands of the modern laboratory. Flasks with interchangeable joints are particularly suitable for all glass apparatus assemblies. **Borosil** offers the interchangeable joints most commonly specified for a particular capacity. Tube Adaptors Category Nos. 8800 and 8820 can be used to connect the Flask with a particular size joint to any other apparatus having a different size joint.



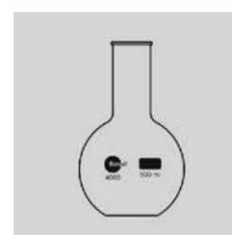


4060 - Flasks, Boiling, Florence, Flat Bottom

- Complies with IS 1381 (Part - I), ISO 1773
- Uniform wall thickness distribution makes these Flasks ideal for heating
- All sizes have a durable matt-finished enamelled area for marking with an ordinary pencil

Product Code	Capacity ml	Approx O.D. x Height mm	Approx Neck O.D. mm	Quantity Per Case
4060009	25	42 x 90	20	50
4060012	50	51 x 90	26	50
4060016	100	64 x 105	26	80
4060018	150	75 x 132	28	10
4060021	250	85 x 140	34	80
4060022	*300	87 x 160	24	20
4060024	500	105 x 165	34	40
4060029	1000	131 x 190	42	20
4060030	2000	167 x 237	50	2
4060031	3000	186 x 300	50	4
4060033	5000	223 x 317	57	2
4060034	6000	250 x 340	65	1
4060038	10000	279 x 400	65	1
4060040	20000	350 x 495	75	1

* Suitable for use in Polenske Apparatus

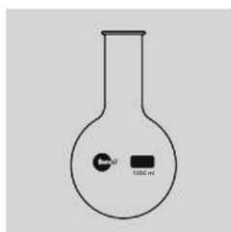
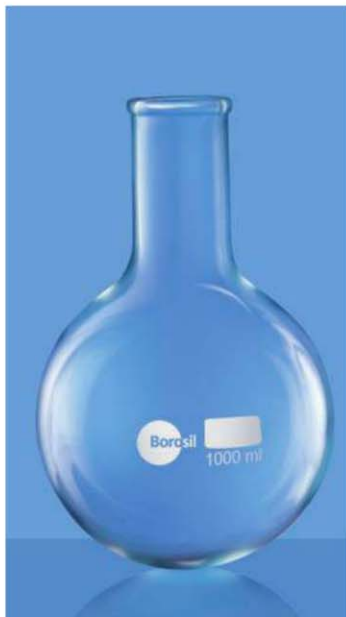


4100 - Flasks, Boiling, Flat Bottom, Short Neck, Interchangeable Joint

- Complies with IS 1381 (Part II), ISO 4797
- Uniform wall thickness distribution makes these Flasks ideal for heating
- All sizes have a durable matt-finished enamelled area for marking with an ordinary pencil
- Equipped with interchangeable joint
- The flat base ensures that the Flask can be placed down even without the supporting ring

Product Code	Capacity ml	Interchangeable Joint	Approx Height mm	Quantity Per Case
4100018	150	24 / 29	115	5
4100021	250	24 / 29	130	5
4100024	500	24 / 29	148	5
4100029	1000	34 / 35	288	2
4100030	2000	34 / 35	321	2
4100031	3000	34 / 35	345	2
4100033	5000	34 / 35	381	2





4260 - Flasks, Boiling, Round Bottom

- Complies with IS 1381 (Part I), ISO 1773
- Uniform wall thickness distribution makes these Flasks ideal for heating
- All sizes have a durable matt-finished enamelled area for marking with an ordinary pencil

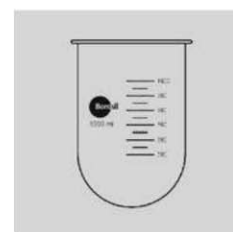
Product Code	Capacity ml	Approx O.D. x Height mm	Approx Neck O.D. mm	Quantity Per Case
4260009	25	42 x 90	22	50
4260012	50	51 x 95	26	70
4260016	100	64 x 110	26	50
4260018	150	75 x 137	28	10
4260021	250	85 x 145	34	80
4260024	500	105 x 175	34	40
4260029	1000	131 x 205	42	20
4260030	2000	166 x 243	51	2
4260031	3000	190 x 305	50	4
4260033	5000	225 x 350	60	2
4260034	6000	236 x 350	65	1
4260038	10000	285 x 420	65	1
4260040	20000	350 x 505	87	1



4265 - E - Flask Without Side Cut For Dissolution Apparatus As per USP, with Certificate

- Vessels confirms to all requirements of U.S.P
- Smooth hemispherical base with no flaws or defects, straight sides and a flat flange
- Graduated in intervals of 50ml
- Ideal for determining the dissolution characteristics of drugs in capsules and tablets

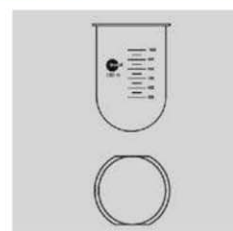
Product Code	Capacity ml	Approx O.D. x Height mm	Quantity Per Case
4265029	1000	131 x 173	10



4266 - L - Flask With Side Cut For Dissolution Apparatus, with Certificate

- These vessels conform to all the requirements of USP
- Smooth hemispherical base with no flaws or defects, straight sides and a flat flange
- Two side-cuts at the flange
- Graduated in intervals of 50ml
- Ideal for determining the dissolution characteristics of drugs in capsules and tablets

Product Code	Capacity ml	Approx O.D. x Height mm	Quantity Per Case
4266029	1000	124 X 173	10

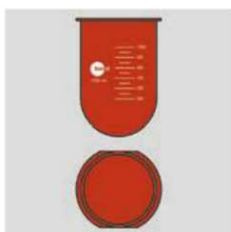




4267 - E - Flask For Dissolution Apparatus As per USP, Amber, with Certificate

- These vessels conform to all the requirements of USP
- Smooth hemispherical base with no flaws or defects, straight sides and a flat flange
- Graduated in intervals of 50 ml
- Ideal for determining the dissolution characteristics of drugs in capsules and tablets
- Coloured in Amber to protect light-sensitive material
- The Amber colour is applied only to the external surface to prevent contamination with the testing material

Product Code	Capacity ml	Approx O.D. x Height mm	Quantity Per Case
4267029	1000	131 X 173	10



4268 - L - Flask With Side Cut For Dissolution Apparatus As per USP, Amber, With Certificate

- These vessels conform to all the requirements of USP
- Smooth hemispherical base with no flaws or defects, straight sides and a flat flange
- Two side-cuts at the flange
- Graduated in intervals of 50 ml
- Ideal for determining the dissolution characteristics of drugs in capsules and tablets
- Coloured in Amber to protect light-sensitive material
- The Amber colour is applied only to the external surface to prevent contamination with the testing material

Product Code	Capacity ml	Approx O.D. x Height mm	Quantity Per Case
4268029	1000	124 X 173	10



Flasks

4270 - D - Flasks for Dissolution Apparatus without side cut

- Vessels confirms to all requirements of USP
- Smooth hemispherical base with no flaws or defects, straight sides and a flat flange
- Graduated in intervals of 50ml
- Ideal for determining the dissolution characteristics of drugs in capsules and tablets

Product Code	Capacity ml	Approx O.D. x Height mm	Quantity Per Case
4270029	1000	107 x 161	10

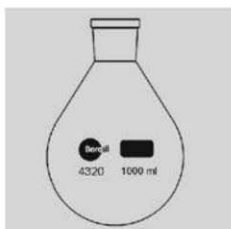


4315 - Flasks, Boiling, Pear Shaped, Short Neck, With Interchangeable Joint

- Made of 3.3 borosilicate glass
- The conical shape makes them ideal for small scale reaction
- Large labelling field

Product Code	Capacity ml	Approx O.D. x Height mm	Quantity Per Case
4315005	5	10 / 19	10
4315105	5	14 / 23	10
4315006	10	10 / 19	10
4315106	10	14 / 23	10
4315009	25	14 / 23	5
4315012	50	14 / 23	10





4320 - Flasks, Pear Shape Suitable For Rotary Evaporators With Ground Socket

- Rota Vapour Flasks are used along with Rotary Evaporators
- Ideal for heating sensitive solvent solute combinations
- Facilitate the extraction of key components like odour, oil, drugs, natural extract and fragrance

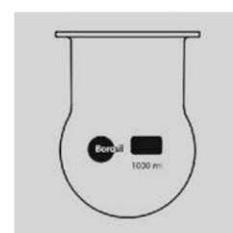
Product Code	Capacity ml	Approx O.D. x Height mm	Quantity Per Case
4320112	50	24 / 29	2
4320012	50	29 / 32	2
4320116	100	24 / 29	2
4320016	100	29 / 32	2
4320121	250	24 / 29	2
4320021	250	29 / 32	2
4320124	500	24 / 29	2
4320024	500	29 / 32	2
4320129	1000	24 / 29	2
4320029	1000	29 / 32	2
4320130	2000	24 / 29	2
4320030	2000	29 / 32	2



4330 - Flasks, (Vessels) Reaction, Wide Mouth, With Flat Flange, 100 mm ID, 150mm OD

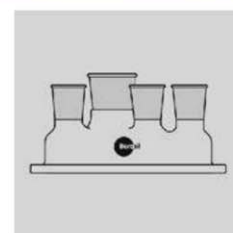
- These Flasks have a spherical body with a neck of inner diameter 4 inches (approx 100 mm)
- The top is finely ground to ensure a leak-resistant fit with the cover

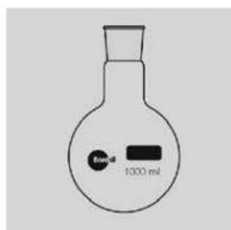
Product Code	Capacity ml	Approx Height mm	Quantity Per Case
4330029	1000	170	2
4330030	2000	205	2
4330033	5000	260	2
4330038	10000	335	1
4330040	20000	400	1



4331 - Lids, For Flasks Reaction Cat No. 4330, Flat Flange and Interchangeable Joint

Product Code	Interchangeable Joint Size					Quantity Per Case
	Centre	Parellel	Side 5°	Side 10°	Side 15°	
4331Z97	19 / 26	19 / 26	24 / 29	19 / 26	-	2
4331Z98	19 / 26	14 / 23	14 / 23	14 / 23	29 / 32	2
4331Z99	29 / 32	14 / 23	14 / 23	14 / 23	29 / 32	2





4380 - Flasks, Boiling, Round Bottom, Short Neck, With Interchangeable Joint

- Made of 3.3 borosilicate glass
- Uniform wall thickness distribution and the round - bottom shape make them ideal for heating
- Generally used in distillation and extraction processes
- Large labelling field

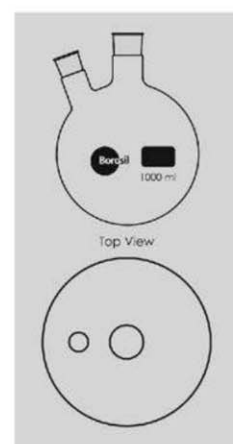
Product Code	Capacity ml	Approx Height	Interchangeable Joint	Quantity Per Case
4380A05	5	60	14 / 23	10
4380A06	10	65	14 / 23	10
4380A09	25	73	14 / 23	10
4380B09	25	76	19 / 26	10
4380A12	50	95	14 / 23	5
4380B12	50	95	19 / 26	5
4380C12	50	95	24 / 29	5
4380D12	50	95	29 / 32	5
4380E12	50	95	34 / 35	5
4380A16	100	120	14 / 23	2
4380B16	100	120	19 / 26	20
4380C16	100	120	24 / 29	20
4380D16	100	120	29 / 32	20
4380E16	100	120	34 / 35	20
4380A21	250	140	14 / 23	20
4380B21	250	140	19 / 26	20
4380C21	250	140	24 / 29	20
4380D21	250	140	29 / 32	20
4380E21	250	140	34 / 35	20
4380A24	500	170	14 / 23	10
4380B24	500	170	19 / 26	10
4380C24	500	170	24 / 29	10
4380D24	500	170	29 / 32	10
4380E24	500	170	34 / 35	10
4380A29	1000	205	19 / 26	10
4380B29	1000	205	24 / 29	10
4380C29	1000	205	29 / 32	10
4380D29	1000	205	34 / 35	10
4380E29	1000	205	45 / 40	10
4380F29	1000	205	55 / 44	10
4380A30	2000	228	24 / 29	4
4380B30	2000	228	29 / 32	4
4380C30	2000	228	34 / 35	4
4380D30	2000	228	45 / 40	4
4380A31	3000	265	24 / 29	4
4380B31	3000	265	29 / 32	4
4380C31	3000	265	34 / 35	4
4380D31	3000	265	45 / 40	4
4380E31	3000	265	55 / 44	4
4380A33	5000	300	24 / 29	2
4380B33	5000	300	29 / 32	2
4380C33	5000	300	34 / 35	2
4380D33	5000	300	45 / 40	2
4380E33	5000	300	55 / 44	2
4380A38	10000	385	34 / 35	1
4380B38	10000	385	55 / 44	1
4380C38	10000	385	55 / 44	1
4380A40	20000	435	55 / 44	1

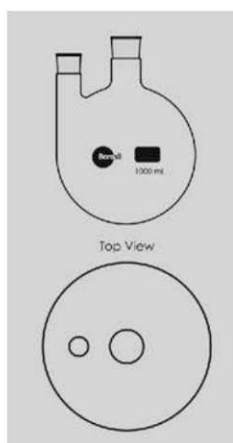


4381 - Flasks, Round Bottom, Two Necks, Centre Neck and One Angled Side Neck, With Interchangeable Joints

- Uniform wall thickness distribution and the round-bottom shape make them ideal for heating
- The shape facilitates uniform heating
- Accessories, thermometer, column, dropping funnels, boiling capillaries, etc., can be fitted depending upon the application
- Generally used in distillation and extraction processes
- One neck is centred and vertical. The side neck is inclined at an angle of 20° to the vertical neck

Product Code	Capacity ml	Interchangeable Joint Size		Quantity Per Case
		Centre Neck	Side Neck	
4381A16	100	19 / 26	14 / 23	4
4381B16	100	24 / 29	14 / 23	4
4381C16	100	24 / 29	19 / 26	4
4381A21	250	24 / 29	14 / 23	4
4381B21	250	24 / 29	19 / 26	4
4381A24	500	24 / 29	14 / 23	4
4381B24	500	24 / 29	19 / 26	4
4381A29	1000	24 / 29	14 / 23	2
4381B29	1000	24 / 29	19 / 26	2
4381A30	2000	24 / 29	14 / 23	2
4381B30	2000	24 / 29	19 / 26	2
4381C30	2000	34 / 35	19 / 26	2
4381A31	3000	34 / 35	19 / 26	2
4381B31	3000	34 / 35	24 / 29	2
4381A33	5000	34 / 35	19 / 26	1
4381B33	5000	34 / 35	24 / 29	1
4381A38	10000	34 / 35	24 / 29	1
4381B38	10000	55 / 44	24 / 29	1
4381A40	20000	55 / 44	24 / 29	1





4382 - Flasks, Round Bottom, Two Necks, Centre Neck and One Parallel Side Neck, With Interchangeable Joints

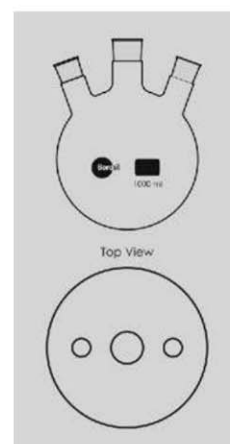
- Uniform wall thickness distribution and the round-bottom shape make them ideal for heating
- The shape facilitates uniform heating
- Accessories, thermometer, column, dropping funnels, boiling capillaries, etc., can be fitted depending upon the application
- Generally used in distillation and extraction processes
- Both the necks are vertical. One neck is centred, while the other is the side neck

Product Code	Capacity ml	Interchangeable Joint Size		Quantity Per Case
		Centre Neck	Side Neck	
4382A16	100	19 / 26	14 / 23	4
4382B16	100	24 / 29	14 / 23	4
4382C16	100	24 / 29	19 / 26	4
4382A21	250	24 / 29	14 / 23	4
4382B21	250	24 / 29	19 / 26	4
4382A24	500	24 / 29	14 / 23	4
4382B24	500	24 / 29	19 / 26	4
4382A29	1000	24 / 29	14 / 23	2
4382B29	1000	24 / 29	19 / 26	2
4382A30	2000	24 / 29	14 / 23	2
4382B30	2000	24 / 29	19 / 26	2
4382C30	2000	34 / 35	19 / 26	2
4382A31	3000	34 / 35	19 / 26	2
4382B31	3000	34 / 35	24 / 29	2
4382A33	5000	34 / 35	19 / 26	1
4382B33	5000	34 / 35	24 / 29	1
4382A38	10000	34 / 35	24 / 29	1
4382B38	10000	55 / 44	24 / 29	1
4382A40	20000	55 / 44	24 / 29	1

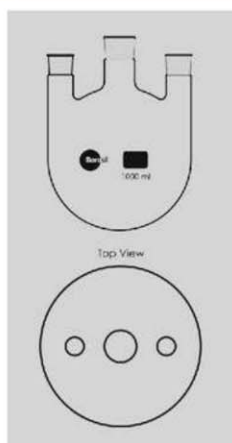


4383 - Flasks, Round Bottom, Three Necks, Centre Neck and Two Angled Side Necks, With Interchangeable Joints

- Uniform wall thickness distribution and the round-bottom shape make them ideal for heating
- The shape facilitates uniform heating
- Accessories, thermometer, column, dropping funnels, boiling capillaries, etc., can be fitted depending upon the application
- Generally used in distillation and extraction processes
- The centred neck is vertical. The two side necks are 180° apart and are inclined at an angle of 20° to the vertical neck



Product Code	Capacity ml	Interchangeable Joint Size			Quantity Per Case
		Centre Neck	Side Neck	Side Neck	
4383A16	100	19 / 26	14 / 23	14 / 23	4
4383B16	100	14 / 23	14 / 23	14 / 23	4
4383C16	100	24 / 29	14 / 23	14 / 23	4
4383D16	100	24 / 29	19 / 26	19 / 26	4
4383A21	250	19 / 26	14 / 23	14 / 23	4
4383B21	250	19 / 26	19 / 26	19 / 26	4
4383C21	250	24 / 29	14 / 23	14 / 23	4
4383D21	250	24 / 29	19 / 26	19 / 26	4
4383A24	500	19 / 26	14 / 23	14 / 23	4
4383B24	500	19 / 26	19 / 26	19 / 26	4
4383C24	500	24 / 29	14 / 23	14 / 23	4
4383D24	500	24 / 29	19 / 26	19 / 26	4
4383A29	1000	24 / 29	14 / 23	14 / 23	2
4383B29	1000	24 / 29	19 / 26	19 / 26	2
4383C29	1000	34 / 35	24 / 29	24 / 29	2
4383D29	1000	34 / 35	19 / 26	19 / 26	2
4383A30	2000	24 / 29	14 / 23	14 / 23	2
4383B30	2000	24 / 29	19 / 26	19 / 26	2
4383C30	2000	34 / 35	19 / 26	19 / 26	2
4383D30	2000	34 / 35	24 / 29	24 / 29	2
4383A31	3000	34 / 35	19 / 26	19 / 26	2
4383B31	3000	34 / 35	24 / 29	24 / 29	2
4383A33	5000	34 / 35	19 / 26	19 / 26	1
4383B33	5000	34 / 35	24 / 29	24 / 29	1
4383C33	5000	45 / 40	24 / 29	24 / 29	1
4383A38	10000	34 / 35	19 / 26	16 / 26	1
4383B38	10000	34 / 35	24 / 29	24 / 29	1
4383C38	10000	45 / 40	24 / 29	24 / 29	1
4383A40	20000	55 / 44	24 / 29	24 / 29	1



4384 - Flask, Round Bottom, Three Necks, Centre Neck and Two Parallel Side Necks With Interchangeable Joints

- Uniform wall thickness distribution and the round-bottom shape make them ideal for heating
- The shape facilitates uniform heating
- Accessories, thermometer, column, dropping funnels, boiling capillaries, etc., can be fitted depending upon the application
- Generally used in distillation and extraction processes
- All the three necks are vertical. The two side necks are 180° apart

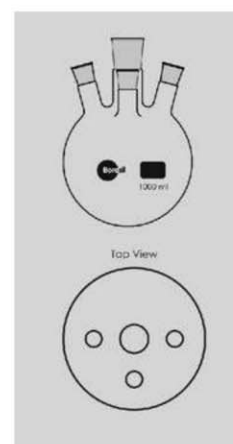
Product Code	Capacity ml	Interchangeable Joint Size			Quantity Per Case
		Centre Neck	Side Neck	Side Neck	
4384A16	100	19 / 26	14 / 23	14 / 23	4
4384B16	100	14 / 23	14 / 23	14 / 23	4
4384C16	100	24 / 29	14 / 23	14 / 23	4
4384D16	100	24 / 29	19 / 26	19 / 26	4
4384A21	250	19 / 26	14 / 23	14 / 23	4
4384B21	250	19 / 26	19 / 26	19 / 26	4
4384C21	250	24 / 29	14 / 23	14 / 23	4
4384D21	250	24 / 29	19 / 26	19 / 26	4
4384A24	500	19 / 26	14 / 23	14 / 23	4
4384B24	500	19 / 26	19 / 26	19 / 26	4
4384C24	500	24 / 29	14 / 23	14 / 23	4
4384D24	500	24 / 29	19 / 26	19 / 26	4
4384A29	1000	24 / 29	14 / 23	14 / 23	2
4384B29	1000	24 / 29	19 / 26	19 / 26	2
4384C29	1000	34 / 35	24 / 29	24 / 29	2
4384D29	1000	34 / 35	19 / 26	19 / 26	2
4384A30	2000	24 / 29	14 / 23	14 / 23	2
4384B30	2000	24 / 29	19 / 26	19 / 26	2
4384C30	2000	34 / 35	19 / 26	19 / 26	2
4384D30	2000	34 / 35	24 / 29	24 / 29	2
4384A31	3000	34 / 35	19 / 26	19 / 26	2
4384B31	3000	34 / 35	24 / 29	24 / 29	2
4384A33	5000	34 / 35	19 / 26	19 / 26	1
4384B33	5000	34 / 35	24 / 29	24 / 29	1
4384C33	5000	45 / 40	24 / 29	24 / 29	1
4384A38	10000	34 / 35	19 / 26	16 / 26	1
4384B38	10000	34 / 35	24 / 29	24 / 29	1
4384C38	10000	45 / 40	24 / 29	24 / 29	1
4384A40	20000	55 / 44	24 / 29	24 / 29	1

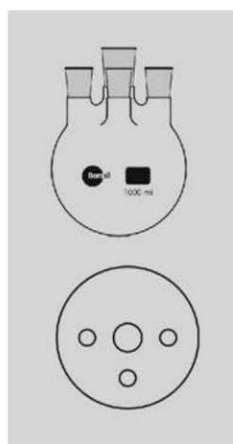


4385 - Flasks, Round Bottom, Four Necks, Centre Neck and Three Angled Side Neck, With Interchangeable Joints

- Uniform wall thickness distribution and the round-bottom shape make them ideal for heating
- The shape facilitates uniform heating
- Accessories, thermometer, column, dropping funnels, boiling capillaries, etc., can be fitted depending upon the application
- Generally used in distillation and extraction processes
- The centred neck is vertical. All the three side necks are inclined at an angle of 20° to the vertical neck
- The two side necks are 180° apart, and a third side neck is at from the other two necks

Product Code	Capacity ml	Interchangeable Joint Size		Quantity Per Case
		Centre Neck	Side Neck	
4385A12	50	24 / 29	24 / 29	4
4385A16	100	24 / 29	14 / 23	4
4385B16	100	24 / 29	19 / 26	4
4385A21	250	24 / 29	14 / 23	4
4385B21	250	24 / 29	19 / 26	4
4385A24	500	24 / 29	14 / 23	4
4385B24	500	24 / 29	19 / 26	4
4385C24	500	24 / 29	24 / 29	4
4385D24	500	34 / 35	24 / 29	4
4385A29	1000	24 / 29	14 / 23	2
4385B29	1000	24 / 29	19 / 26	2
4385C29	1000	24 / 29	24 / 29	2
4385D29	1000	34 / 35	24 / 29	2
4385A30	2000	24 / 29	14 / 23	2
4385B30	2000	24 / 29	19 / 26	2
4385C30	2000	34 / 35	19 / 26	2
4385D30	2000	34 / 35	24 / 29	2
4385A31	3000	34 / 35	19 / 26	2
4385B31	3000	34 / 35	24 / 29	2
4385A33	5000	34 / 35	19 / 26	1
4385B33	5000	34 / 35	24 / 29	1
4385A38	10000	55 / 44	24 / 29	1
4385B38	10000	34 / 35	24 / 29	1
4385A40	20000	55 / 44	24 / 29	1





4386 - Flasks, Round Bottom, Four Necks, Centre Neck and Three Parallel Side Neck, With Interchangeable Joints

- Uniform wall thickness distribution and the round-bottom shape make them ideal for heating
- The shape facilitates uniform heating
- Accessories, thermometer, column, dropping funnels, boiling capillaries, etc., can be fitted depending upon the application
- Generally used in distillation and extraction processes
- All the four necks are vertical. The two side necks are 180° apart
- The third neck is at 90° from the other two necks

Product Code	Capacity ml	Interchangeable Joint Size		Quantity Per Case
		Centre Neck	Side Neck	
4386A12	50	24 / 29	24 / 29	4
4386A16	100	24 / 29	14 / 23	4
4386B16	100	24 / 29	19 / 26	4
4386A21	250	24 / 29	14 / 23	4
4386B21	250	24 / 29	19 / 26	4
4386A24	500	24 / 29	14 / 23	4
4386B24	500	24 / 29	19 / 26	4
4386C24	500	24 / 29	24 / 29	4
4386D24	500	34 / 35	24 / 29	4
4386A29	1000	24 / 29	14 / 23	2
4386B29	1000	24 / 29	19 / 26	2
4386C29	1000	24 / 29	24 / 29	2
4386D29	1000	34 / 35	24 / 29	2
4386A30	2000	24 / 29	14 / 23	2
4386B30	2000	24 / 29	19 / 26	2
4386C30	2000	34 / 35	19 / 26	2
4386D30	2000	34 / 35	24 / 29	2
4386A31	3000	34 / 35	19 / 26	2
4386B31	3000	34 / 35	24 / 29	2
4386A33	5000	34 / 35	19 / 26	1
4386B33	5000	34 / 35	24 / 29	1
4386A38	10000	55 / 44	24 / 29	1
4386B38	10000	34 / 35	24 / 29	1
4386A40	20000	55 / 44	24 / 29	1



4422 - Flasks, Culture, Haffkine

- Complies with IS 7183
- The large, flat bottom surface ensures uniform culture thickness
- Typically used for the preparation of culture in nutrient media

Product Code	Capacity ml	Approx O.D. x Height mm	Quantity Per Case
4422031	3000	245 x 273	2
4422032	4000	246 x 310	2

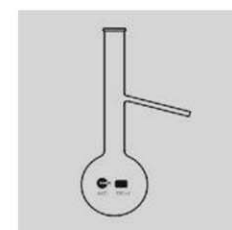
* Suitable for use in Polenske Apparatus



4620-Flasks, Distilling, With Side Arm

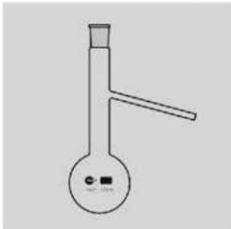
- Complies with IS 2620
- Uniform wall thickness distribution makes these Flasks ideal for heating
- Suitable for distillation process
- Specification as per the Institute of Petroleum Standard No. IP 123 / 64

Product Code	Capacity ml	Approx O.D. x Height mm	Approx Neck O.D. mm	Quantity Per Case
4620016	100	64 x 210	21	4
4620017	*125	70 x 215	21	4
4620021	250	88 x 230	25	4
4620024	500	110 x 250	28	4
4620029	1000	130 x 305	31	4





Flasks



4621 - Flasks, Distilling with i/c joint 19/26 as per ASTM D86

Product Code	Capacity ml	Approx O.D. x Height mm	Approx Neck I. D.	Inter-changeable Joint	Quantity Per Case
4621017	125	70 x 215	19	19 / 26	20

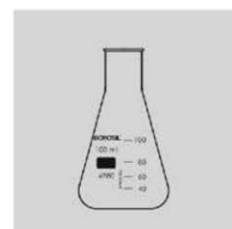


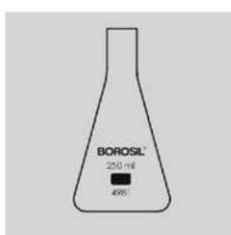
4980 - Flasks, Erlenmeyer, Conical, Narrow Mouth

- Complies with IS 1381(Part II),ISO / DIN 1773
- Uniform wall thickness distribution makes these Flasks ideal for heating
- The conical form makes them suitable for mixing liquids
- The easy-to-read scale and large labelling field facilitate easy marking
- Graduated from 25 ml to 5000 ml

Product Code	Capacity ml	Approx O.D. x Height mm	Approx Neck O.D. mm	Quantity Per Case
4980006	10	37 x 60	15	30
4980009	25	40 x 70	22	40
4980012	50	51 x 82	22	100
4980016	100	64 x 105	22	100
4980018	150	72 x 124	28	100
4980021	250	85 x 140	34	40
4980024	500	105 x 185	38	40
4980029	1000	131 x 220	42	20
4980030	2000	168 x 280	52	20
4980031	3000	185 x 315	48	4
4980033	5000	220 x 367	50	2

25 ml to 5000 ml Graduated



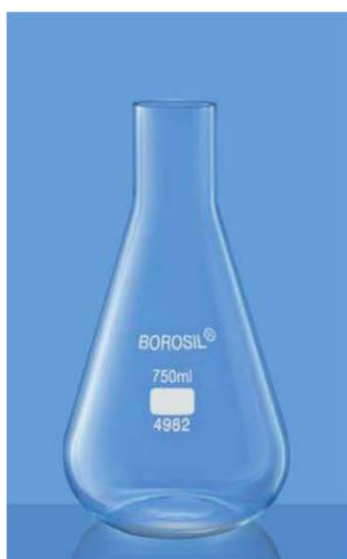


4981 - Flasks, Erlenmeyer, Conical, Long Neck, Without Rim

- Uniform wall thickness distribution makes these Flasks ideal for heating
- Ideal for culture work
- Long neck designed for cotton plugs and metal caps
- The conical form makes them suitable for mixing liquids
- The easy-to-read scale and large labelling field facilitate easy marking

Product Code	Capacity ml	Approx O.D. x Height mm	Approx Neck O.D. mm	Quantity Per Case
4981021	250	78 x 154	27	10

Suitable for culture work, designed for cotton plug or metal caps



4982 - Flasks, Conical, Without Rim

- Uniform wall thickness distribution makes these Flasks ideal for heating
- Ideal for culture work
- Designed without a rim for use in the shaker machine
- The conical form makes them suitable for mixing liquids
- The easy-to-read scale and large labelling field facilitate easy marking

Product Code	Capacity ml	Approx O.D. x Height mm	Approx Neck O.D. mm	Quantity Per Case
4982027	750	114 x 210	42	10

Suitable for culture work, designed for use in shaker machine



Flasks

4989 - Flasks, Erlenmeyer, Graduated, Conical, Amber, With Narrow Mouth

- Complies with IS 1381 (Part II), ISO / DIN 1773
- Uniform wall thickness distribution makes these Flasks ideal for heating
- The conical form makes them suitable for mixing liquids
- The easy-to-read scale and large labelling field facilitate easy marking
- Graduated from 25 ml to 5000 ml
- Coloured in Amber to protect light-sensitive material
- The Amber colour is applied only to the external surface to prevent contamination with the testing material

Product Code	Capacity ml	Approx O.D. x Height mm	Approx Neck O.D. mm	Quantity Per Case
4989016	100	64 x 105	25	10
4989018	150	72 x 124	28	10
4989021	250	85 x 140	34	10
4989024	500	104 x 185	38	10
4989029	1000	131 x 220	42	10

Similar in design to Cat. No. 4980

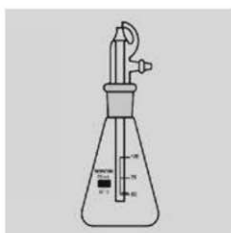


5000 - Flasks, Erlenmeyer, Conical, Narrow Mouth, Interchangeable Joint

- Complies with IS 1381 (Part II), ISO / DIN 4797
- Uniform wall thickness distribution makes these Flasks ideal for heating
- The conical form makes them suitable for mixing of liquids
- The easy-to-read scale and large labelling field facilitate easy marking
- Equipped with interchangeable joints

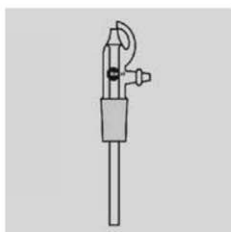
Product Code	Capacity ml	Interchangeable Joint	Quantity Per Case
5000009	25	14 / 23	10
5000012	50	19 / 26	10
5000016	100	24 / 29	10
5000021	250	24 / 29	10
5000024	500	24 / 29	5





5010 - Flask Chromatography Sprayers With Rubber Bulb

Product Code	Capacity ml	Approx O.D. x Height mm	Approx Neck I.D. mm	Quantity Per Case
5010009	25	44 x 78	19	5
5010012	50	51 x 91	19	5
5010016	100	64 x 110	19	5



5011 - Chromatography Sprayer Head

Product Code	Capacity ml	Quantity Per Case
5011009	25	5
5011012	50	5
5011016	100	5



5015 - Flasks, Tilt Measure

- Ideal for dispensing fixed volume of liquid
- Easy to use
 - Tilt the unit backward to fill
 - Tilt the unit forward to dispense
- Accuracy $\pm 5\%$ can be achieved
- Manufactured from chemically resistance 3.3 borosilicate tubing

Product Code	Capacity ml	Flask Capacity ml	Quantity Per Case
5015005	5	100	5
5015006	10	250	5
5015008	20	250	10
5015009	25	250	10
5015012	50	250	10



5019 - Flasks, Erlenmeyer, Conical, Narrow Mouth, With Interchangeable Stopper, Amber

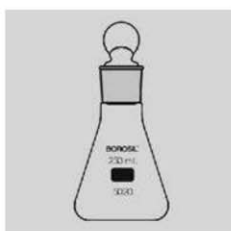
- Uniform wall thickness distribution makes these Flasks ideal for heating
- The conical form makes them suitable for mixing of liquids
- These Flasks can be closed with a glass stopper
- Coloured in Amber to protect light-sensitive material
- The Amber colour is applied only to the external surface to prevent contamination with the testing material

Product Code	Capacity ml	Interchangeable Joint	Quantity Per Case
5019009	25	14 / 23	10
5019012	50	19 / 26	10
5019016	100	24 / 29	20
5019021	250	24 / 29	20
5019024	500	24 / 29	10





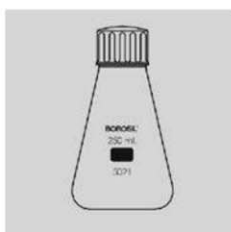
Flasks



5020 - Flasks, Erlenmeyer, Conical, Narrow Mouth, With Interchangeable Stopper

- Uniform wall thickness distribution makes these Flasks ideal for heating
- The conical form makes them suitable for mixing of liquid
- These Flasks can be closed with a glass stopper

Product Code	Capacity ml	Interchangeable Joint	Quantity Per Case
5020009	25	14 / 23	10
5020012	50	19 / 26	10
5020016	100	24 / 29	20
5020021	250	24 / 29	20
5020024	500	24 / 29	10
NEW 5020029	1000	29 / 32	10
NEW 5020030	2000	29 / 32	10



5021 - Flasks, Conical, With Screw Cap

- Uniform wall thickness distribution makes these Flasks ideal for heating
- The conical form makes them suitable for mixing of liquids
- These Flasks can be closed with a screw cap
- The caps are made of PP

Product Code	Capacity ml	Neck Specification	Quantity Per Case
5021016	100	GL 25	20
5021018	150	GL 25	20
5021021	250	GL 32	20
5021024	500	GL 32	10
5021029	1000	GL 45	10
5021030	2000	GL 45	10
5021033	5000	GL 45	2

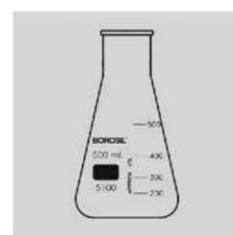


Flasks

5100 - Flasks, Erlenmeyer, Conical, Wide Mouth

- Complies with IS 1381
- Uniform wall thickness distribution makes these Flasks ideal for heating
- The conical form makes them suitable for mixing of liquids
- The easy-to-read scale and large labelling field facilitate easy marking
- Designed with a wide neck that makes cleaning and filling easier

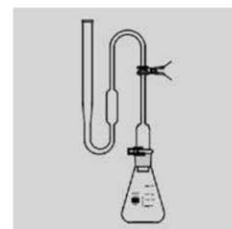
Product Code	Capacity ml	Approx O.D. x Height mm	Approx Neck O.D. mm	Quantity Per Case
5100016	100	70 x 110	34	20
5100021	250	85 x 142	50	30
5100024	500	105 x 175	50	20
5100029	1000	130 x 220	56	10



5200 - Arsenic Determination Apparatus as per USP

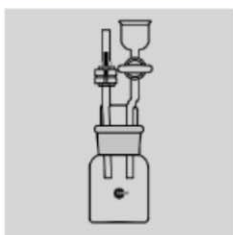
- Designed for the estimation of Arsenic

Product Code	Quantity Per Case
5200001	1





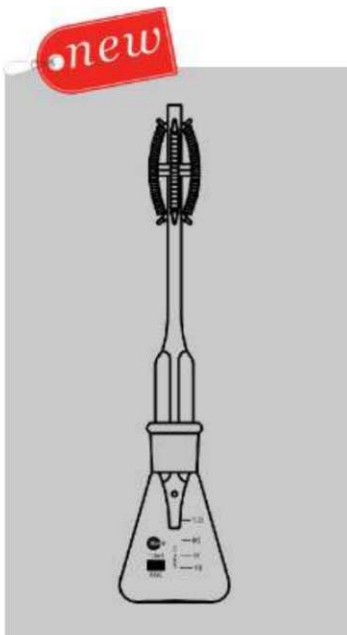
Flasks



5201 - Arsenic Determination Apparatus Gutzeit

- Designed for the estimation of Arsenic

Product Code	Quantity Per Case
5201001	1



5202 - Arsenic Determination Apparatus as per BP

- Designed for the estimation of Arsenic

Product Code	Quantity Per Case
5202001	1

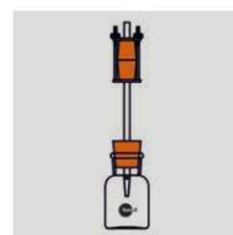


Flasks

5203 - Arsenic Determination Apparatus as per IP

- Designed for the estimation of Arsenic

Product Code	Quantity Per Case
5203001	1



5204 - Arsenic Determination Apparatus as per IS

- Designed for the estimation of Arsenic

Product Code	Quantity Per Case
5204001	1





5340 - Flasks, Filtering, Bolt Neck, With Tubulation

- These Flasks are blown in special moulds
- The shape is designed to impart maximum mechanical strength
- The neck finish is designed for strength and to ensure good stopper fit
- Ideal for use with Buchner Funnel Category No. 36060 and Gooch Crucible No. 32060 with Sintered Discs that have different porosities

Product Code	Capacity ml	Approx O.D. x Height mm	Quantity Per Case
5340012	50	52 x 86	30
5340016	100	64 x 108	20
5340021	250	85 x 155	10
5340024	500	105 x 184	20
5340029	1000	136 x 227	10
5340030	2000	168 x 270	5
5340033	5000	237 x 390	2
5340038	10000**	230 x 488	1
5340040	20000**	290 x 580	1

** These flasks are bottle shaped



5400 - Flasks, Iodine Determination, Interchangeable Stopper

- These Flasks are blown especially for the determination of Iodine value according to the
- Methods of ASTM D-29
- Large labelling field for easy marking
- The handle of the stopper projects above the liquid seal, facilitating its removal

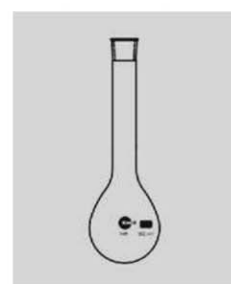
Product Code	Capacity ml	Interchangeable Joint	Quantity Per Case
5400016	100	24 / 29	10
5400021	250	24 / 29	10
5400024	500	24 / 29	10



5420 - Flasks, Kjeldahl, Round Bottom, Long Neck

- These Flasks are specially designed for nitrogen/protein determination as per the Kjeldahl method
- Designed with a tooled neck for greater strength and a better stopper fit

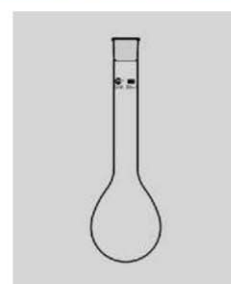
Product Code	Capacity ml	Approx O.D. x Height mm	Quantity Per Case
5420006	10	30 x 180	10
5420010	30	40 x 180	10
5420016	100	61 x 210	10
5420022	300	80 x 298	10
5420024	500	100 x 325	10
5420028	800	113 x 375	10



5430 - Flasks, Kjeldahl, Round Bottom, Interchangeable Joint

- These Flasks are specially designed for nitrogen/protein determination as per Kjeldahl method.
- Designed with a tooled neck for greater strength and better stopper fit
- The Flask with 500ml capacity is a part of Ammonia Distilling Apparatus Category No. 3340

Product Code	Capacity ml	Approx O.D. x Height mm	Interchangeable Joint	Quantity Per Case
5430024	500	100 x 320	24 / 29	10
5430028	800	113 x 375	24 / 29	10



Filtration Assembly

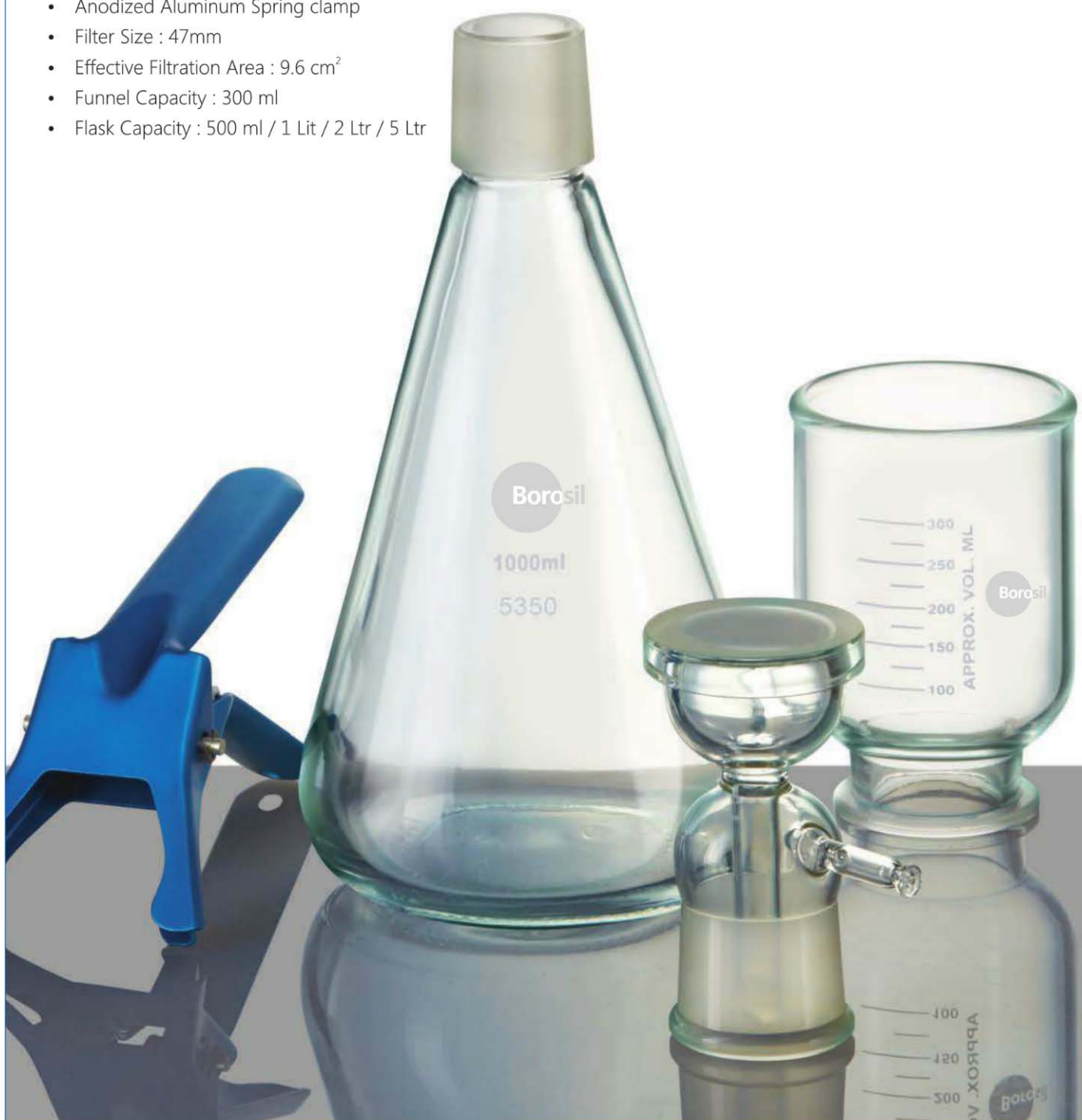
- HPLC Mobile Phase Filtration
- Analysis of Particulate / bacterial contamination & general laboratory micro-filtration
- Units have G1 coarse porosit Frits & accomodate 47 mm filters / 25 mm filters
- All glass design ensures Chemical Compatibility with Most of the Organic Solvents.

Application :

Used for Filtration of HPLC solvents and aqueous mobile phase solutions and buffers.

Specifications

- 100% Borosilicate Glass with fritted glass filter base. Base design has integral vacuum connection located above filtrate drip to prevent contamination of vacuum line with droplets.
- Anodized Aluminum Spring clamp
- Filter Size : 47mm
- Effective Filtration Area : 9.6 cm²
- Funnel Capacity : 300 ml
- Flask Capacity : 500 ml / 1 Lit / 2 Ltr / 5 Ltr





5350 - All Glass Filter Holder - 47mm, Filtration Assembly

- Made of borosilicate glass with fritted glass filter base
- The base design has an integral vacuum connection located above the filtrate drip to prevent contamination of the vacuum line from droplets
- Anodised aluminium spring clamp
- The filter size is 47 mm
- The effective filtration area is 9.6 cm²
- Used for filtration of HPLC solvents and aqueous mobile phase solutions and buffers
- The scaled funnels simplify dosing and analysis

Product Code	Capacity ml	Filtration Base Size mm	Quantity Per Case
5350024	500	47	1
5350029	1000	47	1
5350030	2000	47	1

Spares For All Glass Filter Holder - 47mm

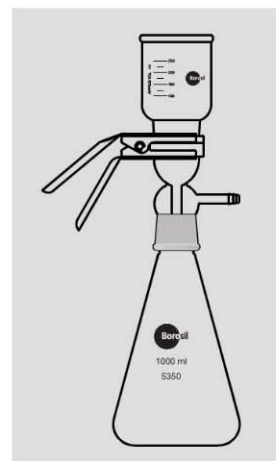
Product Code	Capacity ml	Description
5350124	500 ml	Flask For Filter Holder
5350129	1000 ml	Flask For Filter Holder
5350130	2000 ml	Flask For Filter Holder
5350S01	300 ml	Funnel For Filter Holder
5350S02	47 mm	Filter Support Base For Filter Holder
5350S03	47 mm	Aluminium Clamp for Filter Holder

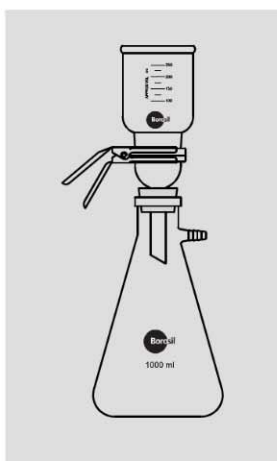
5350-All Glass Filter Holder Assembly - 90mm

Product Code	Capacity ml	Filtration Base Size mm	Quantity Per Case
5350033	5000	90	1

Spares For All Glass Filter Holder - 90mm

Product Code	Capacity ml	Description
5350133	5000 ml	Flask For Filter Holder With B 55 Cone
5350233	1000 ml	Funnel For Filter Holder Flask
5350333	90 mm	Filter Support Base For Filter Holder
5350433	90 mm	Aluminium Clamp for Filter Holder





5360 - All Glass Filter Holder - 47mm, Filtration Assembly

- Made of borosilicate glass with fritted glass filter base
- The base design has an integral vacuum connection located above the filtrate drip to prevent contamination of the vacuum line from droplets
- The filtration base has a silicon stopper
- Anodised aluminium spring clamp
- The filter size is 47mm
- The effective filtration area is 9.6 cm²
- Facilitates analysis of particulate or biological contamination of vacuum filtering liquid
- The scaled funnels simplify dosing and analysis

Product Code	Capacity ml	Filtration Base Size mm	Quantity Per Case
5360029	1000	47	1
5360030	2000	47	1

Spares For All Glass Filter Holder - 47mm

Product Code	Capacity ml	Description
5360129	1000 ml	Flask For Filter Holder
5360130	2000 ml	Flask For Filter Holder
5350S01	300 ml	Funnel For Filter Holder
5360S02	47 mm	Filter Support Base For Filter Holder With Silicon
5350S03	47 mm	Aluminium Clamp for Filter Holder



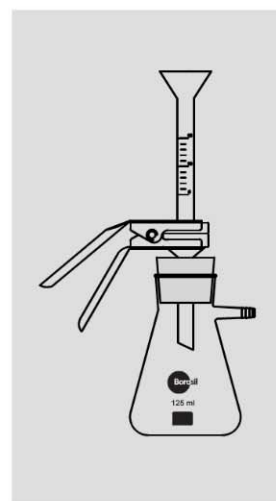
5370 - Glass Filter Holder With Silicon Stopper - 25 mm

- Made of borosilicate glass with fritted glass filter base
- The base design has an integral vacuum connection located above the filtrate drip to prevent contamination of the vacuum line from droplets
- The filtration base has a silicon stopper
- Anodised aluminium spring clamp
- The filter size is 25 mm
- The effective filtration area is 9.6 cm²
- Facilitates analysis of particulate or biological contamination of vacuum filtering liquid
- The scaled funnels simplify dosing and analysis

Product Code	Capacity ml	Filtration Base Size mm	Quantity Per Case
5370017	125	25	1

Spares For Glass Filter Holder With Silicon Stopper - 25 mm

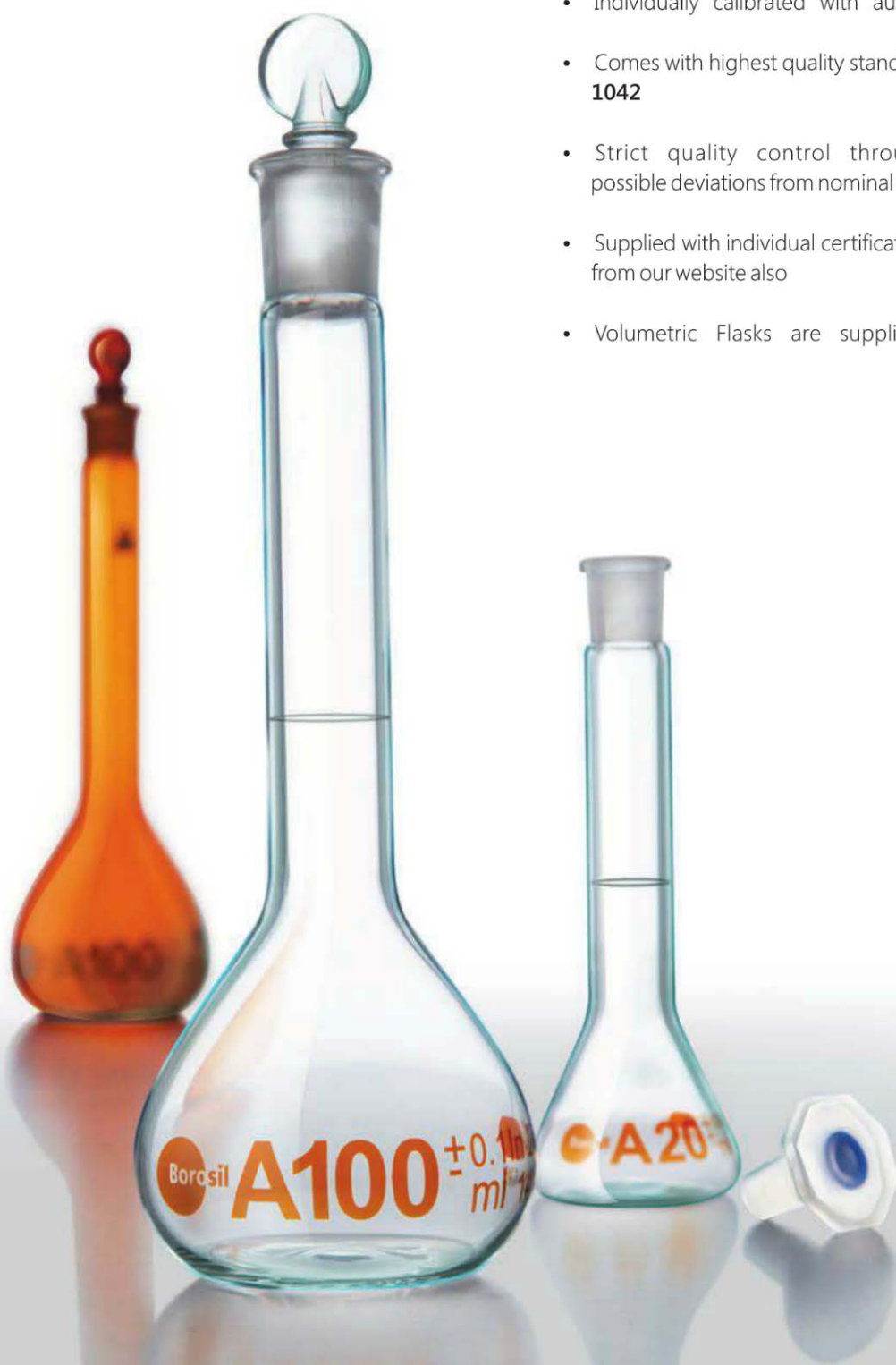
Product Code	Capacity ml	Description
5370S01	125 ml	Flask For Filter Holder
5370S02	15 ml	Funnel For Filter Holder
5370S03	25 mm	Filter Support Base For Filter Holder With Silicon
5370S04	25mm	Aluminium Clamp for Filter Holder



Volumetric Flask

As the field of chemistry evolves with more research & educational institutions as well as industrial applications expanding day by day, the need for high quality glassware has been felt more than ever before. Be it the preparation of standard solutions or making the right volume with appropriate calibration, Volumetric Glassware offers the right mix of quality and efficiency for numerous objectives.

- Manufactured from 3.3 Low Expansion Borosilicate I. D. control tubing
- Individually calibrated with automatic calibration process
- Comes with highest quality standards according to **ISO / DIN 1042**
- Strict quality control through all steps eliminate possible deviations from nominal volume
- Supplied with individual certificate which can be downloaded from our website also
- Volumetric Flasks are supplied with plastic or solid





It is a laboratory glassware that is designed to hold a certain volume at a particular temperature and indicates the nominal volume, tolerance, precision class, relevant manufacturing standard etc. The Volumetric Flasks are manufactured in a range of sizes that is capable of containing 1 to 5,000 ml of liquid.

It is very important to understand that for analysis that demands high precision, the selection of instruments is very vital. And in cases where precision analysis is expected, only high accuracy instruments give the desired results. Most sophisticated automatic instruments can deliver high precision results, only if the volumetric ware used to prepare samples is accurate.

Borosil volumetric flasks are designed to give the best combination of thermal shock resistance, physical strength and resistance to chemical attack. They are made to withstand the demands of the modern laboratory and are particularly suitable for all glass apparatus assemblies.

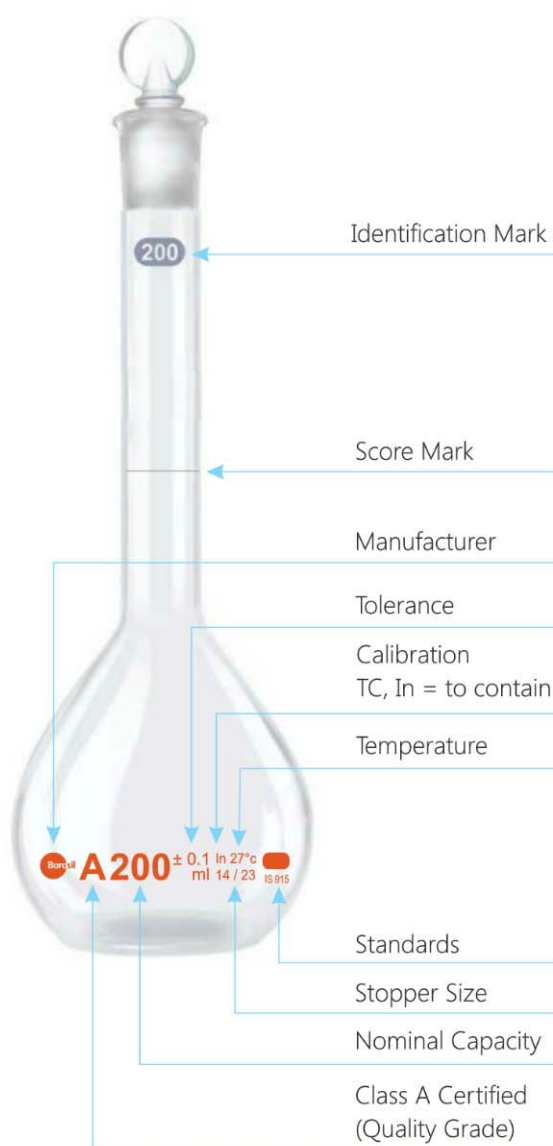
Calibration:

- Every Volumetric Flask is calibrated on fully automatic computer controlled calibration machine, eliminating the manual error in reading the meniscus, thereby giving more accurate volume
- Each Volumetric Flask is individually calibrated, provided with unique Code No. and supplied with individual Certificate

Printing:

- All Volumetric Flasks are printed with silk screen in permanent amber
- Printing in blue colour can also be supplied on request
- The amber Volumetric Flasks are printed with white ceramic enamel

At **Borosil** we understand that different needs require different solutions. Hence we offer our clients a wide range of flasks, designed to meet their individual requirements, while ensuring optimum quality.

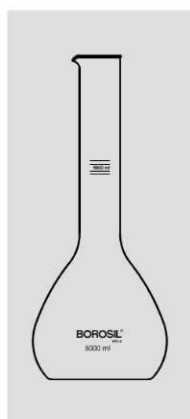




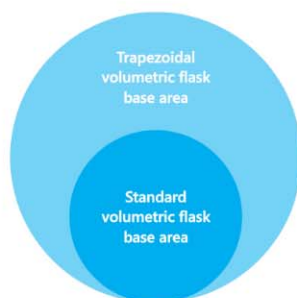
5639 - Jars, Measuring, With Pour Out, With Works Certificate

- Suitable for measurement of petrol
- Calibrated as per weight and measure guidelines

Product Code	Capacity ml	Quantity per Case
5639033	5000	1



Trapezoidal Volumetric Flask



Volumetric flasks with small capacities can be topple down more easily due to their higher centre of gravity.

Trapezoidal volumetric flasks have much larger base area which ensures higher stability. It has at least twice base area compare to standard volumetric flask of the same capacity.





5640 - Flasks, Volumetric, With Interchangeable Glass Solid Stopper, Accuracy As Per Class A, With Batch Certificate

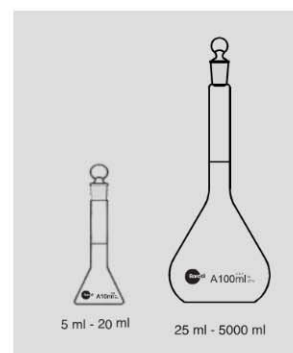
- Complies with ISO / DIN 1042
- Calibrated at 20°C
- Manufactured from borosilicate glass for corrosion-free performance
- Amber enamel inscriptions
- 4 ml to 20 ml supplied with trapezoidal shape for better stability

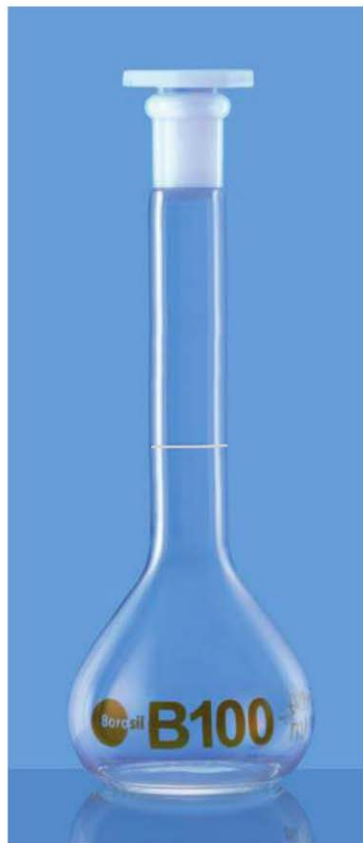
Product Code	Capacity ml	Tolerance \pm ml	Stopper Size	Quantity Per Case
5640001D	1*	0.015	7 / 16	5
5640002D	2*	0.015	7 / 16	5
5640005D	5	0.025	7 / 16	5
5640006D	10	0.025	7 / 16	5
5640008D	20	0.04	10 / 19	5
5640009D	25	0.04	10 / 19	5
5640012D	50	0.06	12 / 21	10
5640016D	100	0.10	14 / 23	10
5640020D	200	0.15	14 / 23	10
5640021D	250	0.15	14 / 23	10
5640024D	500	0.25	19 / 26	10
5640029D	1000	0.40	24 / 29	10
5640030D	2000	0.60	29 / 32	2
5640033D	5000	1.20	34 / 35	1

* 1ml and 2 ml sizes are of test tube shape.

* Blue enamel inscriptions can be supplied on request.

* Individual certificate can be supplied on request.





5642 - Flasks, Volumetric, With Interchangeable Plastic Stopper, Accuracy As per Class B

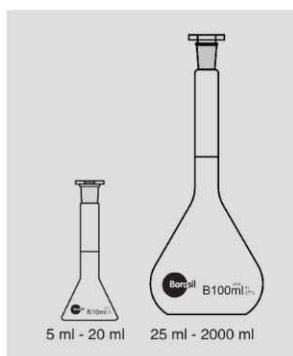
- Complies with ISO / DIN 1042
- Calibrated at 20°C
- Amber enamel inscriptions
- Manufactured from 3.3 borosilicate glass for corrosion-free performance
- 5 ml to 20 ml supplied with trapezoidal shape for better stability

Product Code	Capacity ml	Tolerance ±ml	Stopper Size	Quantity Per Case
5642001D	1*	0.03	7 / 16	10
5642002D	2*	0.03	7 / 16	10
5642005D	5	0.05	7 / 16	10
5642006D	10	0.05	7 / 16	10
5642008D	20	0.08	10 / 19	10
5642009D	25	0.08	10 / 19	10
5642012D	50	0.12	12 / 21	20
5642016D	100	0.20	14 / 23	20
5642020D	200	0.30	14 / 23	20
5642021D	250	0.30	14 / 23	20
5642024D	500	0.50	19 / 26	20
5642029D	1000	0.80	24 / 29	20
5642030D	2000	1.20	29 / 32	4

* 1ml and 2 ml sizes are of test tube shape.

* Blue enamel inscriptions can be supplied on request.

* Individual certificate can be supplied on request.





5643 - Flask, Wide Mouth Volumetric with interchangeable Solid Glass Stopper, Class A, With Batch Certificate

- Complies with ISO / DIN 1042
- Calibrated at 20°C
- Manufactured from 3.3 borosilicate glass for corrosion-free performance
- Specially designed wide mouth for testing bigger dia. Tablet without making it in powder form

Product Code	Capacity ml	Tolerance \pm ml	Stopper Size	Quantity Per Case
5643009D	25	0.06	12 / 21	5
5643012D	50	0.1	14 / 23	10
5643016D	100*	0.2	19 / 26	10
5643020D	200*	0.2	19 / 26	10

* Not covered in the standards
 * Blue enamel inscriptions can be supplied on request.
 * Individual certificate can be supplied on request.





5645 - Flasks, Volumetric, With Interchangeable Glass Solid Stopper Accuracy, Class A, USP (US Pharmacopoeia), With Batch Certificate

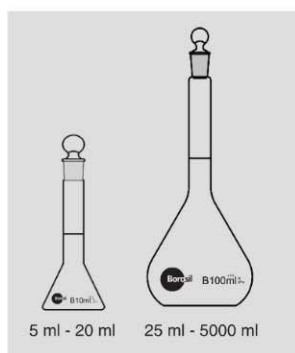
- Complies with ASTM E 288
- Calibrated at 20°C
- Manufactured from 3.3 borosilicate glass for corrosion-free performance
- Amber enamel inscriptions
- 5 ml to 20 ml supplied with trapezoidal shape for better stability

Product Code	Capacity ml	Tolerance \pm ml	Stopper Size	Quantity Per Case
5645005	5	0.02	7 / 16	5
5645006	10	0.02	7 / 16	5
5645008	20	0.03	10 / 19	5
5645009	25	0.03	10 / 19	5
5645012	50	0.05	12 / 21	10
5645016	100	0.08	14 / 23	10
5645020	200	0.10	14 / 23	10
5645021	250	0.12	14 / 23	10
5645024	500	0.20	19 / 26	10
5645029	1000	0.30	24 / 29	10
5645030	2000	0.50	29 / 32	2

* Blue enamel inscriptions can be supplied on request.

* Individual certificate can be supplied on request.

* 20 ml not covered in standard.





5646 - Flasks, Volumetric, With Interchangeable Plastic Stopper, Accuracy As per Class A, With Batch Certificate

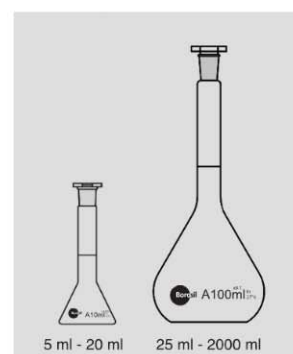
- Complies with ISO / DIN 1042
- Calibrated at 20°C
- Manufactured from 3.3 borosilicate glass for corrosion-free performance
- Amber enamel inscriptions
- 5 ml to 20 ml supplied with trapezoidal shape for better stability

Product Code	Capacity ml	Tolerance \pm ml	Stopper Size	Quantity Per Case
5646001D	1*	0.015	7 / 16	5
5646002D	2*	0.015	7 / 16	5
5646005D	5	0.025	7 / 16	5
5646006D	10	0.025	7 / 16	5
5646008D	20	0.04	10 / 19	5
5646009D	25	0.04	10 / 19	5
5646012D	50	0.06	12 / 21	10
5646016D	100	0.10	14 / 23	10
5646020D	200	0.15	14 / 23	10
5646021D	250	0.15	14 / 23	10
5646024D	500	0.25	19 / 26	10
5646029D	1000	0.40	24 / 39	10
5646030D	2000	0.60	29 / 32	2

* 1ml and 2 ml sizes are of test tube shape.

* Blue enamel inscriptions can be supplied on request.

* Individual certificate can be supplied on request.



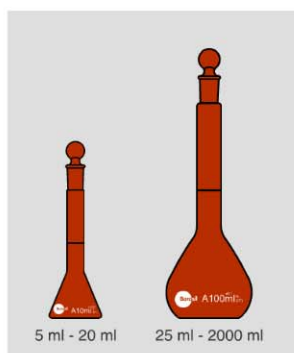


5648 - Flasks, Volumetric, With Interchangeable Stopper, Amber, Accuracy As per Class A, With Batch Certificate

- Complies with ISO / DIN 1042
- Calibrated at 20°C
- Manufactured from 3.3 borosilicate glass with an amber coating on exterior surfaces to facilitate use with light sensitive solutions
- White enamel inscriptions
- 5 ml to 20 ml supplied with trapezoidal shape for better stability

Product Code	Capacity ml	Tolerance \pm ml	Stopper Size	Quantity Per Case
5648005D	5	0.025	7 / 16	5
5648006D	10	0.025	7 / 16	5
5648008D	20	0.04	10 / 19	5
5648009D	25	0.04	10 / 19	5
5648012D	50	0.06	12 / 21	10
5648016D	100	0.10	14 / 23	10
5648020D	200	0.15	14 / 23	10
5648021D	250	0.15	14 / 23	10
5648024D	500	0.25	19 / 26	10
5648029D	1000	0.40	24 / 29	10
5648030D	2000	0.60	29 / 32	2

Similar in design to cat No. 5640



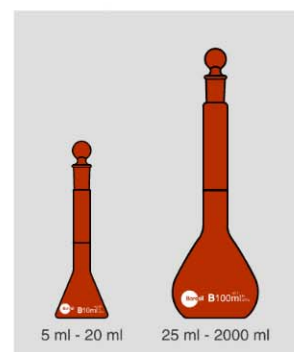


5649 - Flasks, Volumetric, With Interchangeable Stopper, Amber, Accuracy As per Class B

- Complies with ISO / DIN 1042
- Calibrated at 20°C
- White enamel inscriptions
- Manufactured from 3.3 borosilicate glass with an amber coating on exterior surfaces to facilitate use with light sensitive solutions
- 5 ml to 20 ml supplied with trapezoidal shape for better stability

Product Code	Capacity ml	Tolerance \pm ml	Stopper Size	Quantity Per Case
5649005D	5	0.05	7 / 16	10
5649006D	10	0.05	7 / 16	10
5649008D	20	0.08	10 / 19	10
5649009D	25	0.08	10 / 19	10
5649012D	50	0.12	12 / 21	20
5649016D	100	0.20	14 / 23	20
5649020D	200	0.30	14 / 23	20
5649021D	250	0.30	14 / 23	20
5649024D	500	0.50	19 / 26	20
5649029D	1000	0.80	24 / 29	20
5649030D	2000	1.20	29 / 32	4

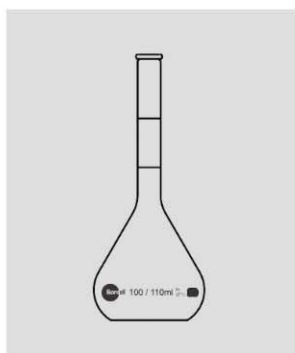
Similar in design to cat No. 5641



**5650 - Flasks, Volumetric, Sugar Estimation, Without Stopper**

- Complies with BS 675
- A two mark flask designed for the analysis of sugar solutions. The two graduation marks provide a dilution of 1 in 10

Product Code	Capacity ml	Tolerance \pm ml	Quantity Per Case
5650016	100 / 110	0.15	20





5651 - Flask, Volumetric, With Interchangeable Solid Glass Stopper, Accuracy Class 'A' , with Amber Mark, with Batch Certificate

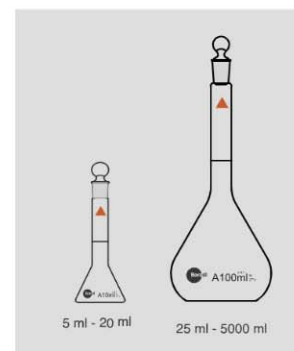
- Complies with ISO / DIN 1042
- Calibrated at 20°C
- Manufactured from 3.3 borosilicate glass for corrosion-free performance
- Amber enamel inscriptions
- 5 ml to 20 ml supplied with trapezoidal shape for better stability
- Special amber colour triangle at neck for easy differentiation. They are also suitable for Cytotoxic test where flasks to be isolated from other glassware

Product Code	Capacity ml	Tolerance \pm ml	Stopper Size	Quantity Per Case
5651001D	1*	0.015	7 / 16	4
5651002D	2*	0.015	7 / 16	4
5651005D	5	0.025	7 / 16	5
5651006D	10	0.025	7 / 16	5
5651008D	20	0.04	10 / 19	5
5651009D	25	0.04	10 / 19	5
5651012D	50	0.06	12 / 21	10
5651016D	100	0.1	14 / 23	10
5651020D	200	0.15	14 / 23	10
5651021D	250	0.15	14 / 23	10
5651024D	500	0.25	19 / 26	10
5651029D	1000	0.4	24 / 29	10
5651030D	2000	0.6	29 / 32	2

* 1ml and 2 ml sizes are of test tube shape.

* Blue enamel inscriptions can be supplied on request.

* Individual certificate can be supplied on request.



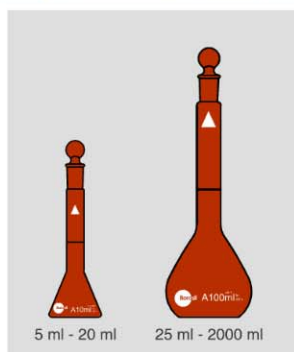


5652 - Flask, Volumetric, With Interchangeable Solid Glass Stopper, Accuracy Class 'A' , with White Mark, with Batch Certificate

- Complies with ISO / DIN 1042
- Calibrated at 20°C
- Manufactured from 3.3 borosilicate glass with an amber coating on exterior surfaces to facilitate use with light sensitive solutions
- White enamel inscriptions
- 5 ml to 20 ml supplied with trapezoidal shape for better stability
- Special white colour triangle at neck for easy differentiation. They are also suitable for Cytotoxic test where flasks to be isolated from other glassware.

Product Code	Capacity ml	Tolerance ±ml	Stopper Size	Quantity Per Case
5652005	5	0.025	7 / 16	5
5652006	10	0.025	7 / 16	5
5652008	20	0.04	10 / 19	5
5652009	25	0.04	10 / 19	5
5652012	50	0.06	12 / 21	10
5652016	100	0.1	14 / 23	10
5652020	200	0.15	14 / 23	10
5652021	250	0.15	14 / 23	10
5652024	500	0.25	19 / 26	10
5652029	1000	0.4	24 / 29	10
5652030	2000	0.6	29 / 32	2

* Individual certificate can be supplied on request.

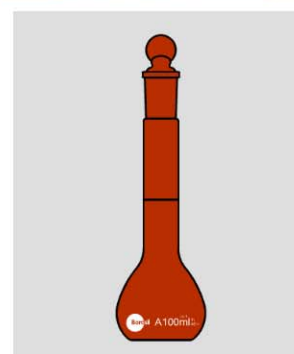


5653 - Flasks, Wide Mouth Volumetric With Interchangeable Solid Glass Stopper, Amber, Class A, With Batch Certificate

- Complies with ISO / DIN 1042
- Calibrated at 20°C
- Manufactured from 3.3 borosilicate glass with an amber coating on exterior surfaces to facilitate use with light sensitive solutions
- Specially designed wide mouth for testing bigger dia. Tablet without making it in powder form

Product Code	Capacity ml	Tolerance \pm ml	Stopper Size	Quantity Per Case
5653009D	25	0.06	12 / 21	5
5653012D	50	0.10	14 / 23	10
5653016D	100*	0.2	19 / 26	10
5653020D	200*	0.2	19 / 26	10

* Not covered under standards



Volumetric Flasks



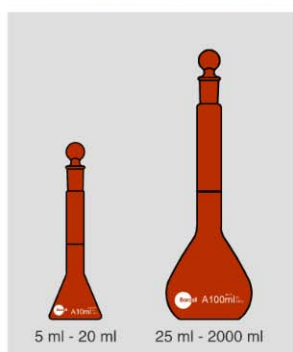
5655 - Flasks, Volumetric with Interchangeable Solid Glass stopper Accuracy As Per Class A, USP (US Pharmacopoeia), Amber, With Batch Certificate

- Complies with ASTM E 288
- Calibrated at 20°C
- Manufactured from borosilicate glass for corrosion-free performance
- 5 ml to 20 ml supplied with trapezoidal shape for better stability
- Manufactured from 3.3 borosilicate glass with an amber coating on exterior surfaces to facilitate use with light sensitive solutions

Product Code	Capacity ml	Tolerance \pm ml	Stopper Size	Quantity Per Case
5655005	5	0.02	7 / 16	5
5655006	10	0.02	7 / 16	5
5655008	20	0.03	10 / 19	5
5655009	25	0.03	10 / 19	5
5655012	50	0.05	12 / 21	10
5655016	100	0.08	14 / 23	10
5655020	200	0.10	14 / 23	10
5655021	250	0.12	14 / 23	10
5655024	500	0.20	19 / 26	10
5655029	1000	0.30	24 / 29	10
5655030	2000	0.50	29 / 32	2

* Individual certificate can be supplied on request.

* 20 ml not covered in standard.





Cosmos Supply Co., Ltd.
cosmos_supply@hotmail.com
cosmos_supply@yahoo.co.th



QTS Agro Co., Ltd.
qts_agro@hotmail.com
qts_agro@yahoo.co.th

www.cosmos-supply.com