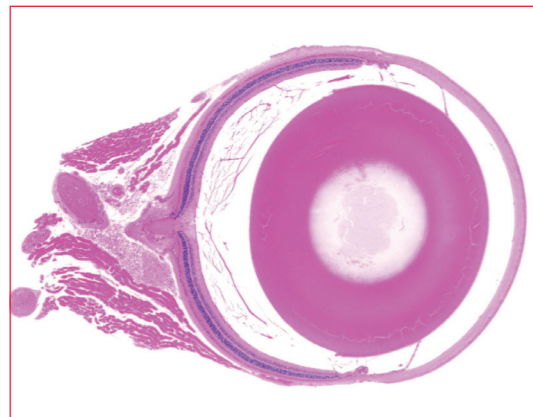


High Fidelity More True-to-Life



Digital Pathology Slide Scanner

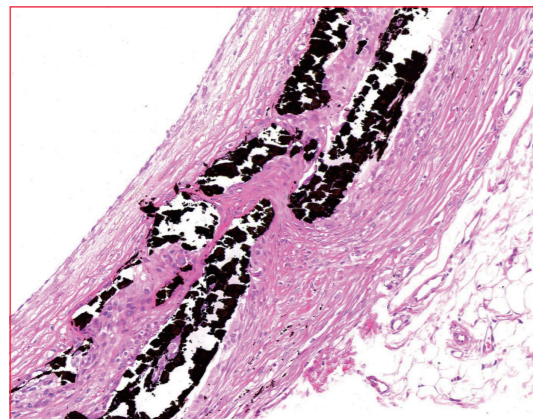
HE Staining - Eyeball



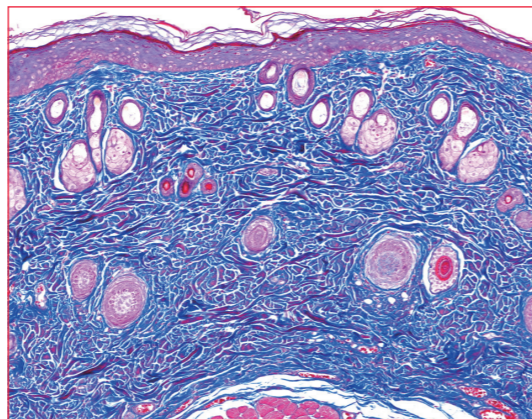
Alizarin Red Staining - Fetal Mouse



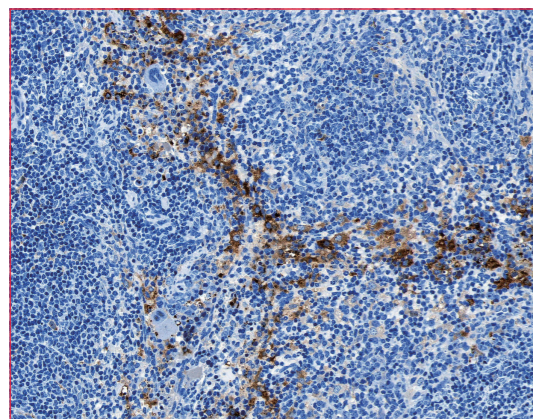
Von Kossa Staining - Aorta



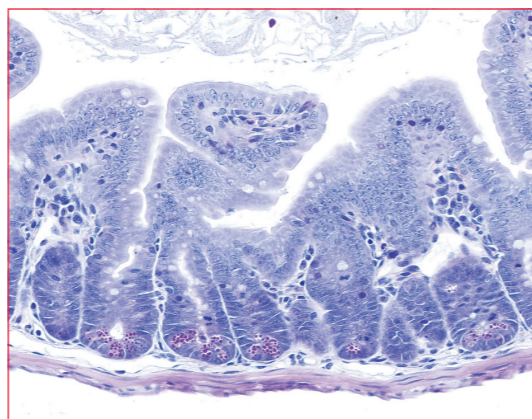
Masson Staining - Skin



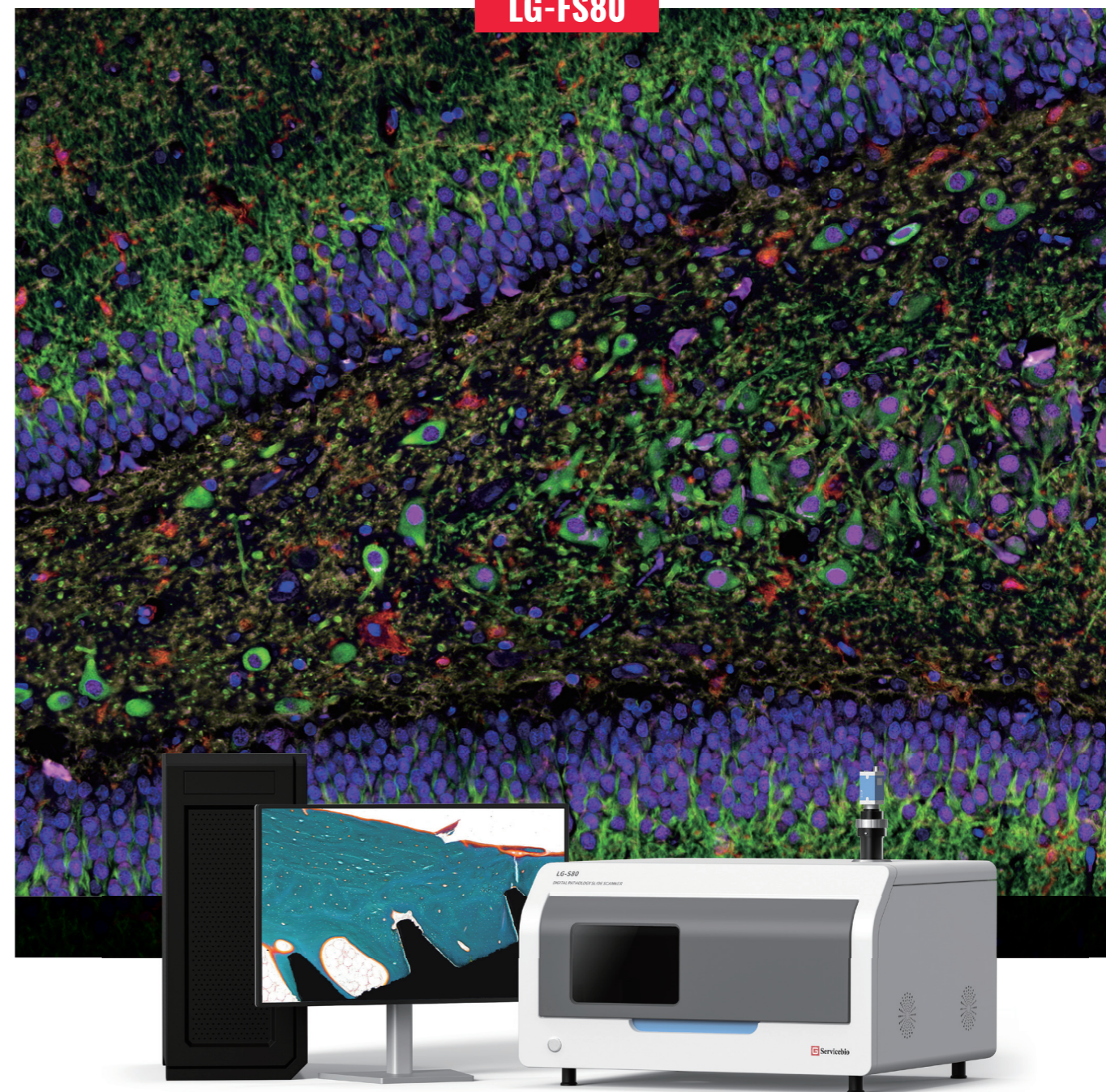
Prussian Blue DAB Enhanced Staining - Spleen



Fluorescent Pink B Staining - Small Intestine



LG-FS80



High-end Microscopy Components

Objective Lens

Plan-Apo 20×/0.8 & Plan-Apo40×/0.95
Delivers excellent color reproduction and image clarity for true-to-life, accurate results.

Camera

Medical-grade Area Scan Camera
Equipped with dual medical-grade area scan cameras: Brightfield: Color camera directly captures red, green, and blue (RGB) light to produce true-color images. Fluorescence: High-sensitivity monochrome camera captures fluorescent emission photons more effectively, achieving higher signal-to-noise ratio and superior image quality.

1. Extended Focus (Extended Depth of Field)
2. Z-Stack
3. Unlimited Filter Block Switching
4. Real-Time Imaging
5. Adjustable Exposure Time
6. Suitable for FISH Scanning

Light Source

Brightfield Scanning
Equipped with a xenon flash lamp providing stable light output to ensure consistent image quality.

Fluorescence Scanning
Equipped with a high-stability solid-state light source, no preheating required. Delivers precise spectra, maintenance-free operation, and a lifespan of up to 20,000 hours, accurately covering major fluorophores such as DAPI, CY3, CY5, and CY7.

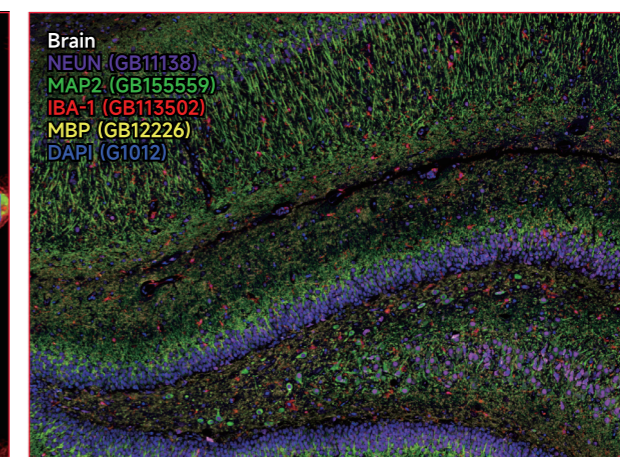
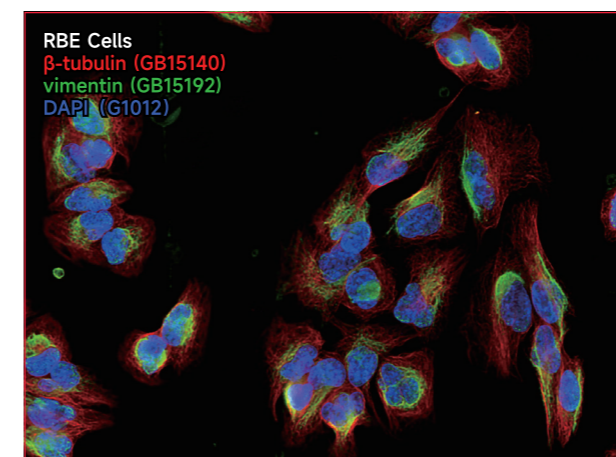
Suitable for medical diagnostics and research requiring exceptional image quality
Especially in applications demanding high resolution and accurate color reproduction

| | | | |
|-------------------------------|--|------------------------|----------------------|
| Cat. No. | LG-FS80 | Scanning Field of View | 52 mm×25 mm |
| Slide Capacity | 80 slides (8 racks, 10 slides per rack) | File Format | SVS |
| Slide Loading Method | Automatic | Instrument Dimensions | 660 mm*622 mm*585 mm |
| Continuous Scanning | Unattended, fully automatic | Instrument Weight | 65 kg |
| Fluorescence Scanning | 10-position motorized carousel with high-stability solid-state light source, enabling true immunofluorescence slide scanning | | |
| Objective Lens | Dual motorized objectives (Plan-Apo 20×/0.8 & Plan-Apo 40×/0.95); 20× or 40× selectable before scanning | | |
| Scanning Resolution | 20×: 0.27 μm/pixel; 40×: 0.13 μm/pixel | | |
| Throughput with 20× Objective | 15 slides/hour (15mm × 15mm tissue, clear results) | | |
| Specimen Recognition | Automatically detects tissue shape and scans only effective tissue regions | | |
| Extended Depth of Field | Fuses multi-layer scans into a single image, supporting up to 99 layers | | |
| Scanning Mode | Brightfield and fluorescence | | |
| Slide Size | Length 75–76 mm, Width 25–26 mm, Thickness 0.9–2 mm | | |
| Barcode Reading | Automatic 1D and 2D barcode recognition; slides named using barcode content | | |
| Software System | Slide scanning software, image browsing software, pathology analysis software | | |

Fluorescence / Brightfield Scanning

Clearer images with more distinct positive signals

Fluorescence Scanning



Standard: Three-color Filter Block

DAPI: 377/50(352-399) | 447/60(417-477)
SpGreen: 494/20(484-504) | 527/20(517-537)

SpOrange: 543/22(532-554) | 586/20(576-596)

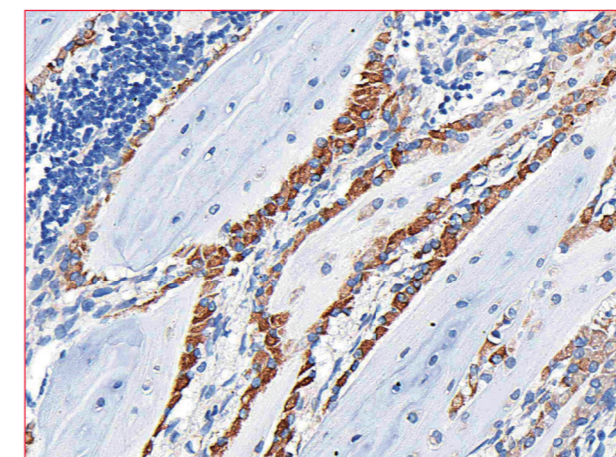
Optional

SpAqua: 438/24(426-450) | 483/32(467-499)
SpGold: 534/20(524-544) | 572/28(558-586)
SpRed: 586/20(576-596) | 628/32(612-644)

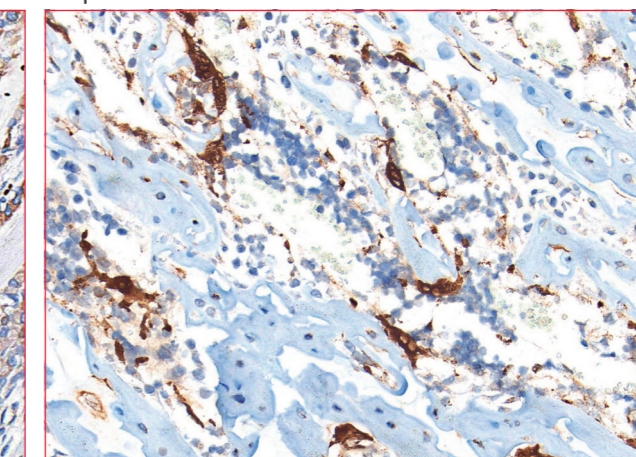
CY5: 628/40(608-648) | 692/40(672-712)
CY7: 720/75(683-758) | 811/81(770-851)

Brightfield Scanning

Osteocalcin GB115684



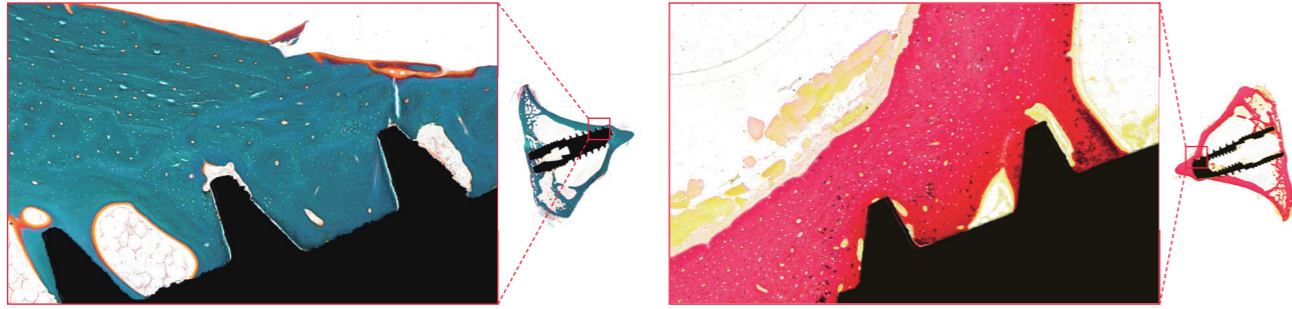
Trap GB11416



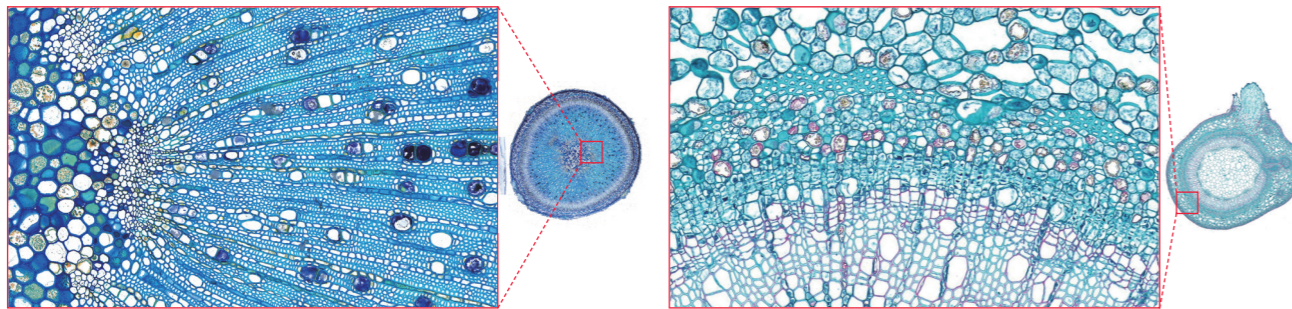
Thick Sections

Supports scanning slides 0.9–2 mm thick, easily handling hard tissue sections

▪ Bone Tissue



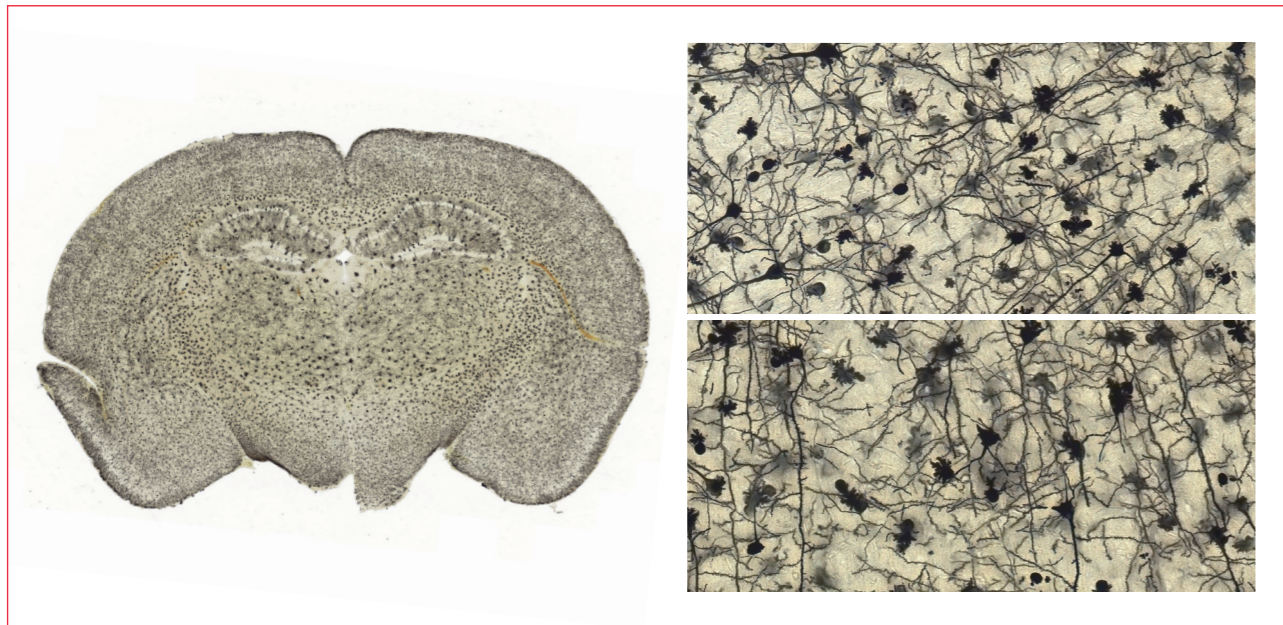
▪ Plant Tissue



Thick Tissue

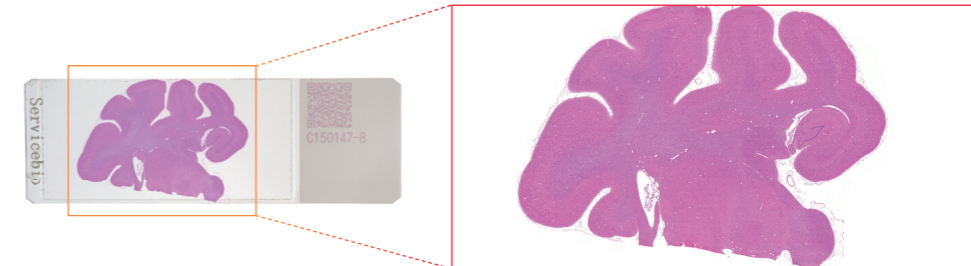
Supports 99-layer image fusion for vivid detail in thick samples

▪ Golgi Staining



Covers the entire non-white area of the slide for rapid scanning of **large tissues** such as tissue microarrays and monkey brain

▪ Monkey Brain



▪ Tissue Microarray

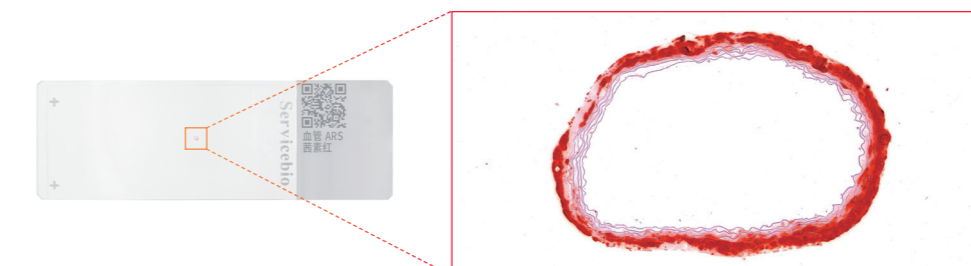


Advanced Hardware & Software
Enables fast scanning of **small tissues** such as plant roots, stems, and blood vessels

▪ Young Rice Roots



▪ Blood Vessels



Servicebio Fully Proprietary Scanning Software

Clear layout for easy operation: left panel for focus and scan settings, center for slide stage and controls, right panel for preview and automatic scan area recognition.

Image Focus Settings

Adjust focus parameters as needed for optimal scanning. Supports multiple modes, including single-layer, multi-layer, and extended depth-of-field scanning.

Slide Stage

Built-in slide stage controllable via software for precise movement and positioning. Layout is clear for easy slide location.

Software Toolbar

Provides rich operation buttons for functions such as preview, automatic scan area recognition, and instrument reset.

Preview Function

Preview images before scanning to ensure accuracy. Automatic scan area recognition improves efficiency and reduces manual errors.

Instrument Reset

Control instrument reset through software to maintain optimal performance.

Alpathwell® Histochemistry Analysis Software

Servicebio Proprietary IHC AI Analysis Software

Revolutionary Window Analysis | See-What-You-Get Analyze Any Area Freely

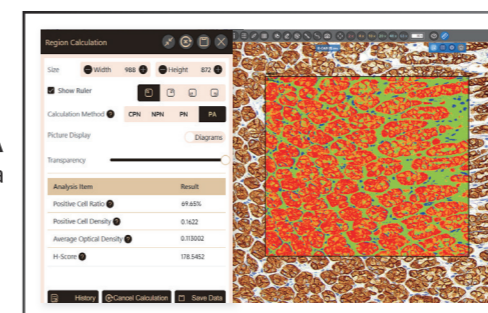
Supports Arbitrary Region Selection



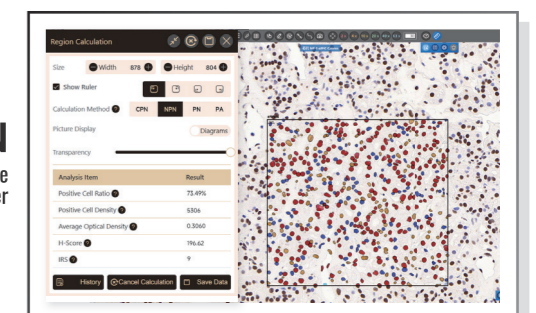
4

Calculation Methods

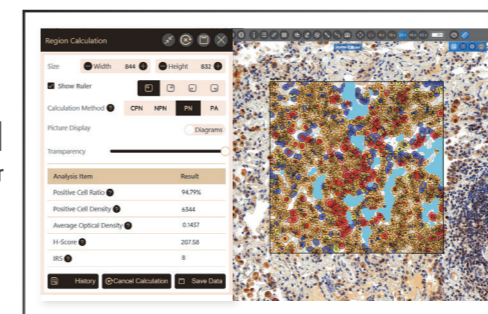
PA
Positive Area



NPN
Nuclear Positive Number



PN
Positive Number



CPN
Cytoplasmic Positive Number

