



**MAKE MORE ACCURATE**  
**METROLOGY SOLUTIONS**  
**FOR ALL MANUFACTURINGS**  
High Precision | Smart Software | R&D Team



## ABOUT JINUOSH

CUSTOMER FIRST QUALITY CONTROL TEAM WORK

Guangdong Jinuosh Technology Co., Ltd. is a hightech enterprise egaged in the research and development,production and sales of optical microscope, precision measuring instruments experimental equipment and various optica components and components, with a technical teamand management team specializing in the development of advanced products and proces research.

Always follow: "customer first, quality first perfect" quality policy, wholeheartedly for domesti and foreign customers to provide beautiful shape,excellent performance, reasonable price,user satisfaction's testing equipment products, the products are mainly exported,our company has won the trust and praise of many customers by providing allround assistance, high quality and sincere service. The company has gradually established the leading position in the testing instrument industry in China.In the domestic and international markets to establish a good brand, with its strong strength and good reputation in the industry, to become the world's top brands of excellent partners.

### GUANGDONG JINUOSH TECHNOLOGY CO., LTD

Service Hot: 4000 628860

Tel:0769-22820867

E-mail : Sales1@jinuosh.com

Website: www.jinuosh.com

Address: No.25 Dongke Road , Dongcheng Distric , Dongguan city , Guangdong province , China

# SEMI-AUTO SERIES

## SEMI-AUTO VISION MEASURING SYSTEM



METROLOGY SOLUTIONS FOR ALL MANUFACTURINGS

Semi-auto Vision Measurement Machine. X/Y axis control manually,Z-axis CNC motion control (including auto focus function eliminate the human focus error, enhance measurement accuracy and stability) . Z-axis with high accuracy linear guide.

## Features

- Drive resolution X/Y axis control manually, Z-axis CNC motion control.
- With auto focus function,make your operation easier.
- Auto Zoom Lens:0.7X - 4.5X.
- High precision granite base, column, to ensure high stability and rigidity.
- Software assisted dimming, so that users can know whether the light is over-saturated.
- Bottom light source lamp makes the imaging effect clearer.



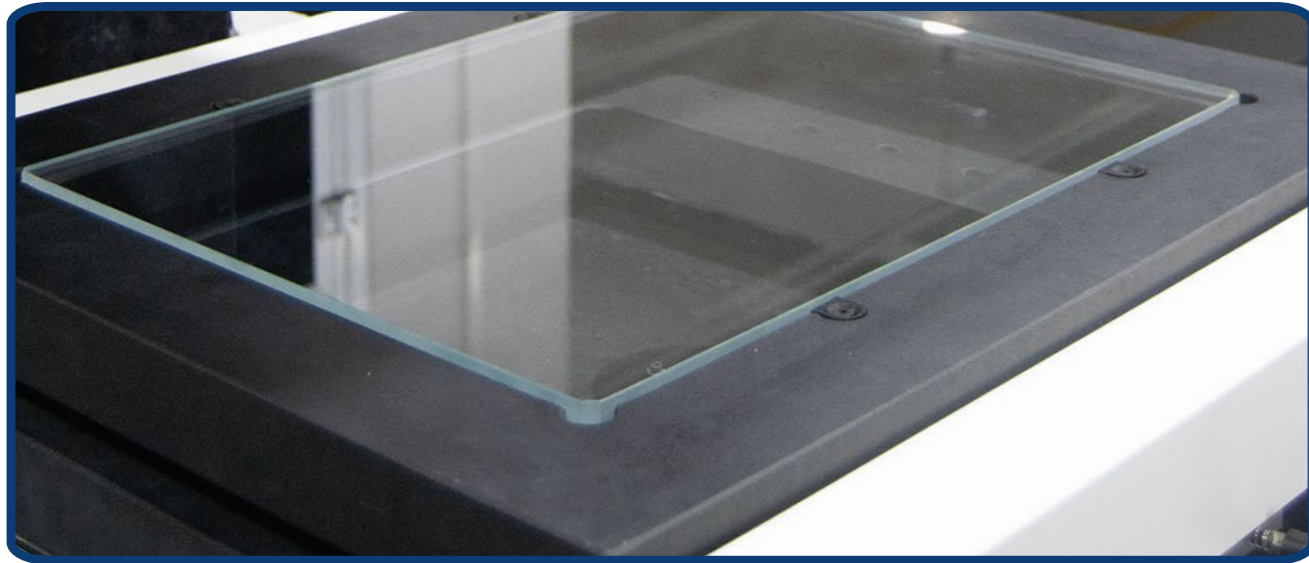
Measuring stroke(mm)

	M2010	M3020	M4030	M5040
X	200	300	400	500
Y	100	200	300	400
Z	200	200	200	200

Resolution: 0.5μm

## Integrated structure, High precision granite base

Max loading weight is 20KG, Use high precision natural granite to ensure the stable operation of the equipment, and has good temperature stability, not easy to deformation.



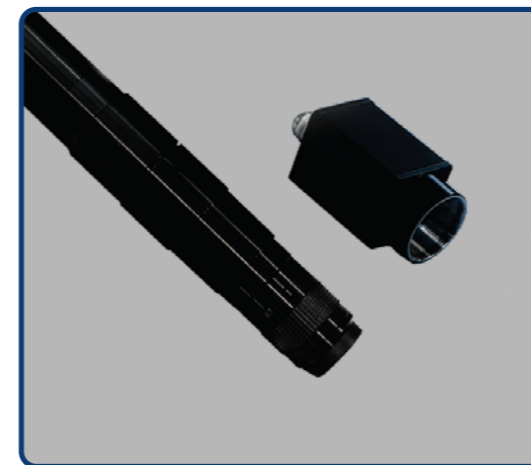
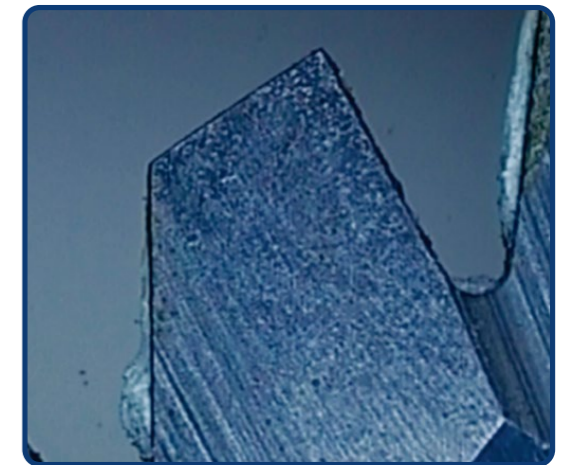
## Motorized Focus

Z axis Linear guideway & motor control.Auto Focus.



## Wide ranging zoom optics streamline dimensional measurements

Efficient program creation and dimensional measurement are achieved as magnification can be changed at high speed, whilst maintaining highly accurate measurement. So more convenient to test precision sample' s size.



## CMOS image sensor

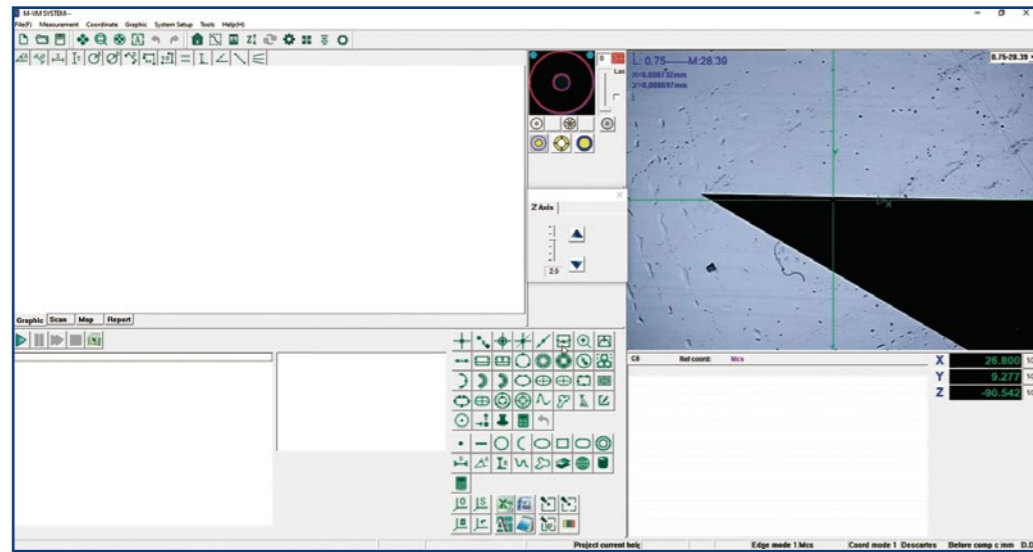
See clearly, Accurate in measurement, high resolution color camera high definition image effect, high quality picture.

## Optical system

Manual operation measurement, the lens and light source position can be adjusted up and down, easy to operate. LED cold light source to avoid heat deformation of the work piece under test. Various forms of light source, ensure to meet the diversity of measurement requirements, software assisted dimming, so that users know whether the light is over-saturated.



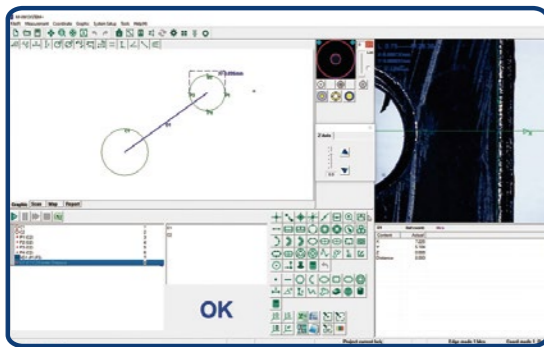
# SOFTWARE



JINUOSH M-VM Manual Measure, dimensional measurement software for the ever-evolving M series. Support functions to create measurement programs have been further enhanced, making fast, highly accurate dimensional measurements easier than ever before.

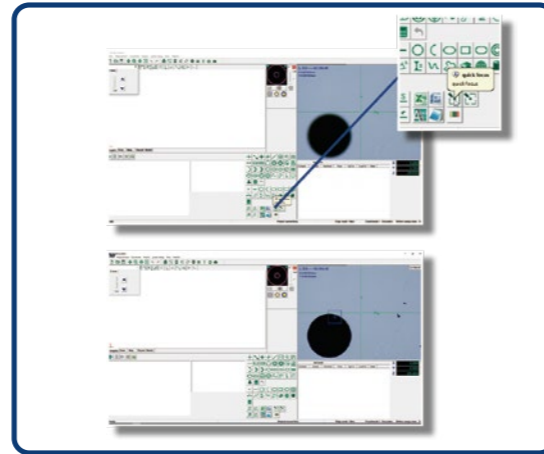
## Multi-functional software

Switch into CNC program, quickly match measurement, navigation image "real-time navigation" function, with the fastest speed to locate the work piece to measure the position for efficient programming.



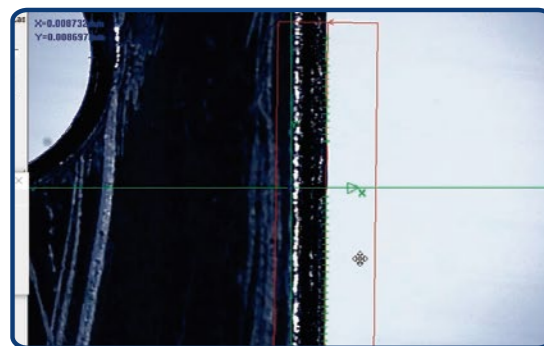
## Auto Focus

Motor control auto Focus.



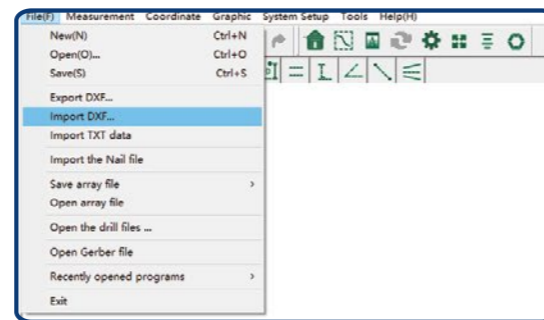
## Intelligent edge

Reduce the error caused by personnel improper operation.

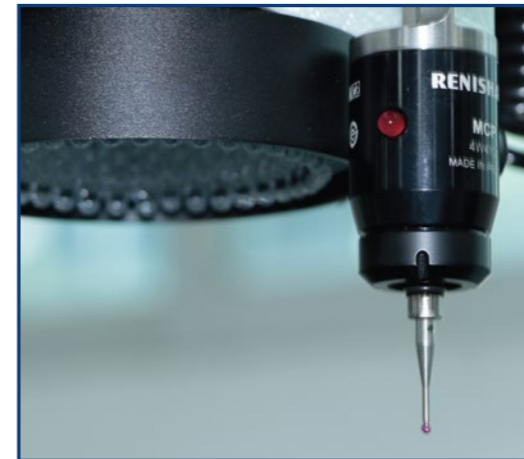


## Graphic correlation

Software can import CAD files, can realize the standard drawing file and workpiece comparison function.



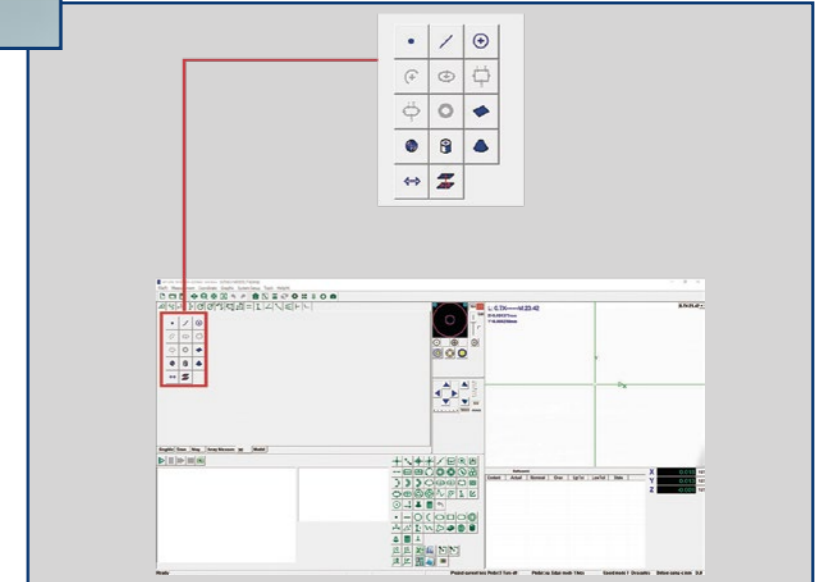
## Renishaw MCP probe



# Touch Probe

Optional probe can have 3D measuring function, intuitive 3D graphic display, let users improve the efficiency of probe measurement.

# OPTIONAL



## Illumination unit

White LED 4-ring 8-area programmable ring light source



# SPECIFICATIONS

\*(L= is the measured length, unit mm)

Model	M2010	M3020	M4030	M5040
Stage glass size(mm)	228×128	328×228	428×328	528×428
Maximum stage loading	20KG			
X/Y Linear Accuracy	$(3.0+L/200)\mu\text{m}$			
Z Accuracy	$(5.0+L/50)\mu\text{m}$			
Observation and Image	1/2" GIGE Color Camera 1.3MP			
	Motorized Zoom Lens:0.7X - 4.5X			
	Monitor magnification :40X-250X			
	Working distance:90mm			
	Jinuosh M-VM Measurment software			
Illumination unit	White LED Ring Light Illumination & White LED Transmitted Illumination			

## MORE ACCESSORIES OPTIONAL

Z Axis	250mm 300mm 350mm 400mm(Other options)
Lens	Motorized zoom lens 0.7-4.5X + coaxial light source
	Motorized zoom lens 0.7-4.5X + coaxial light source + polarized light
	Motorized zoom lens 0.58-7.5X without coaxial light source
	Motorized zoom lens 0.58-7.5X + coaxial light source
	Motorized zoom lens 0.58-7.5X + coaxial light source + polarized light
	Manual zoom lens 0.58-7.5X
	Manual zoom lens 0.58-7.5X + coaxial light source
	Manual zoom lens 0.58-7.5X + coaxial light source + polarized light
Touch Probe	Renishaw or Other options
Ring light	White LED 4-ring 8-area programmable ring light source (Auto control the brightness)

## Application

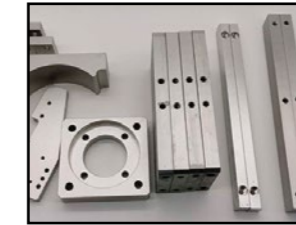
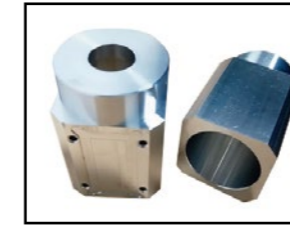
### Hardware industry

Including hardware parts, die casting, screws, springs, gears, etc



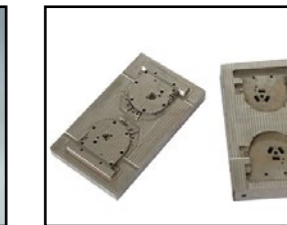
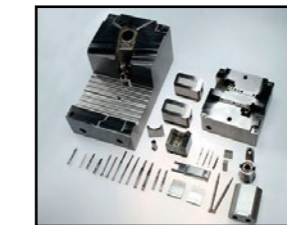
### Machining industry

Including car, milling, grinding, CNC and other mechanical parts, etc



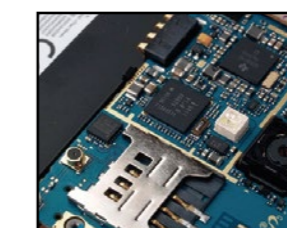
### Mold industry

Including mold products, mold parts, mold inserts, mold kernel, mold core



### 3C industry

It includes glass cover plates, spare parts, chips, circuit boards and touch screens of mobile phones, ipads ,etc



### Automobile industry

Including auto parts, auto modules

