



MAKE MORE ACCURATE

**METROLOGY SOLUTIONS
FOR ALL MANUFACTURINGS**

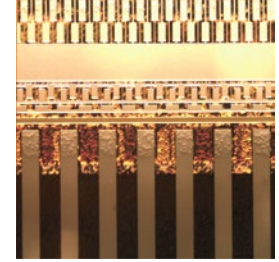
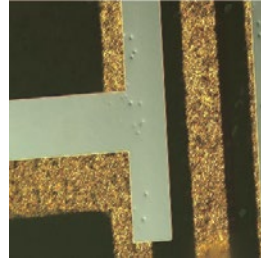
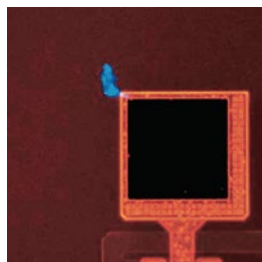
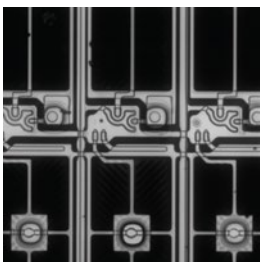
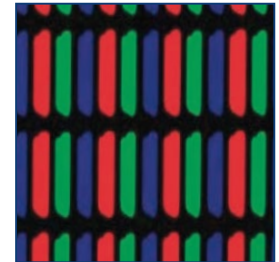
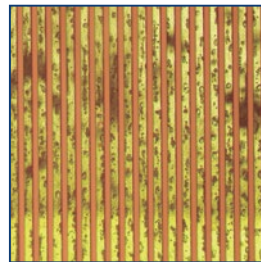
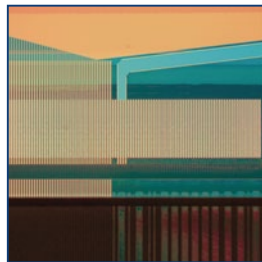
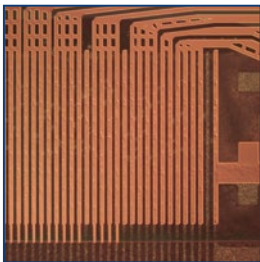
High Precision | Smart Software | R&D Team

JINUOSH

GUANGDONG JINUOSH TECHNOLOGY CO., LTD

Stero Microscope SZ61	01
Stero Microscope SZX7	02
Video Microscope TV745	03
Video Microscope TV660	04
Inverted Metallurgic Microscope GX43	05
Inverted Metallurgic Microscope GX53	06
Simple Metallographic Microscope CX21	07
Simple Metallographic Microscope CX31	08
Erected Metallurgical Microscope BX43	09
Erected Metallurgical Microscope BX53	10
Erected Metallurgical Microscope MX53	11
Erected Metallurgical Microscope MX63	12
Measuring Microscope MU Series	13-14
Multifunctional Measuring Microscope MMI Series	15-16
SEM Series	17
VHX Series	18

Application







SZ61 Specifications

Item	Standard configuration	Optional
Viewing head	Gemel Binocular ,45°tilt, 360° rotation, interpupillary distance 54-76mm; Bilateral diopter adjustment ± 5 diopter	Gemel Trinocular ,Optional splitting ratio 0:100 and 2:8
Eyepiece	WF10X20mm, wide-angle eyepiece with high eye point, for the convenience of observers wearing glasses	WF15X15MM/WF20X10MM/WF25X9MM/WF30X8MM
Magnification	7X~45X, continuously variable	Optional eyepieces and auxiliary objectives extend to 2.1X~270X
Objective	0.7X~4.5X continuous magnification,objective magnification ratio 1:6.4, to ensure the image plane parfocal	—
Attachment objective	1X	0.3X/0.5X/0.7X/1.5X/2X
Working distance	100MM	—
Focusing bracket	Inner diameter 76mm, column diameter 32mm	—
Illumination	T56, LED ring light, 56 Led bulbs, brightness: more than 12000Lux	T72, LED ring light, 72 Led bulbs, 50000Lux, 4 area lighting L40, cold light source, length: 400mm, brightness: 7500Lux
Photo ocular	—	1/2CTV, 1/3CTV, 0.35XCTV, 0.5XCTV, 1XCTV
Base	Column type white flat base, 200x255x22mm	Base plate: 320x260x16.5mm

SZX7



SZX7 Specifications

Item	Standard configuration	Optional
Viewing head	Gemel Binocular, 45° tilt, 360° rotation, interpupillary distance 54-76mm; Bilateral diopter adjustment ± 5 diopter	Gemel Trinocular, 45° tilt, 360° rotation, interpupillary distance 54-76mm; Bilateral diopter adjustment ± 5 diopter, splitting ratio 0:100
Eyepiece	WF10X20mm, wide-angle eyepiece with high eye point, for the convenience of observers wearing glasses	WF15X15MM/WF20X10MM/WF25X9MM/WF30X8MM
Magnification	7X~45X	Optional eyepieces and auxiliary objectives can be extended up to 2.1X-- 180X, with continuous magnification
Objective	0.7X~4.5X continuous magnification, objective magnification ratio 1:6.4, to ensure the image plane parfocal	—
Attachment objective	1X	0.3X/0.5X/0.7X/1.5X/2X
Working distance	100MM	—
Focusing bracket	Inner diameter 76mm, column diameter 32mm	—
Base	BL5 column LED lamp base, upper and lower light source is 3WLED lamp, upper and lower can be independently dimmed, base: 238x285x40mm	BL2, the upper and lower light source is 3WLED, the upper and lower can be independently dimmed, base: 200x255x60mm
Illumination	Surface oblique light, bottom LED light	T56, LED ring light, 56 Led bulbs, brightness: more than 12000Lux
		T72, LED ring light, 72 Led bulbs, 50000Lux, 4 area lighting
		L40, cold light source, length: 400mm, brightness: 7500Lux
Photo ocular	0.5XCTV	1/2CTV, 1/3CTV, 0.35XCTV, 1XCTV
Working platform	Black and white work board	—



TV74 Specifications

Item	Standard configuration	Optional
Vitrinite	Continuous zoom objective 0.7X-5X, built-in camera module, real-time HDR, built-in OSD menu, 1/3 "CMOS 4M, built-in storage 16G, support SD card storage, maximum expansion 32G, with photo button, image output interface: HDMI, USB2.0, Mini USB2.0, support wireless	—
Monitor	IPS10 inch HD touch screen, screen variable Angle (-5° to 15°)	12-inch HD touch screen External 22-inch HDMI interface HD monitor
Objective	1x Objective, WD105mm	1.4x Objective, WD100mm 0.5x Objective, WD170mm
Light	LED ring light: 56 LED, with dimming knob, switch, color temperature 5000-5500K	TWO splitting LED light, with switch dimming knob, independent control of the inner and outer rings, color temperature 5000-5500K, with ring light connection ring
Base	Vertical arm type large flat base group, stroke 225mm	—
Measuring software	—	Built-in software measurement system
Others	32GU disk; USB cable 1.5M; HDMI cable 5M; Hexagonal wrench;	—

TV660



TV660 Specifications

Item	Standard configuration	Optional
Electronic magnification	25X~150X (HDMI 16:9 21.5" Monitor)	The maximum expansion magnification is 5~3000X
Optical Objective	0.7X~4.5X horizontal zoom lens, zoom ratio: 6.5X, 0.5X C-mount camera adapter	—
Camera params	2MPixel (1920*1080), target surface size: 1/2 ", frame number: 1080P@60fps	—
Measuring software	Measurement between two points, point to line, three point circle, center distance, concentric circle, point to circle, line to circle, parallel line, rectangle, Angle, radian, polygon etc	—
Data storage	with measurement results image or Save Excel data	—
Measuring mode	Mouse operation, intelligent selection/manual selection	—
Interface	2 USB interfaces for USB flash drives, wireless mouse or keyboard	—
Illumination	Adjustable LED surface light source	—
Z-axis travel	100mm	—
Platform	White metal base plate	4 axis moving measuring table
External objective lens	1X Teleconverter	1.5X Teleconverter /2X Teleconverter
Monitor	22 "HD monitor	—



GX43 Specifications

Item	Standard configuration	Optional
Optical system	Infinity color correct optical system	—
Eyepiece tubes	Trinocular eyepiece tubes ,45 degree inclined,interpupillary distance: 54-75mm	—
Eyepiece	High eye point wide field plan eyepiece PL10X22mm	High eye point wide field plan eyepiece PL10X22mm, with adjustable diopter, micrometer available High eye point wide field plan eyepiece PL 15X/16mm
Objective	Infinity long working distance plan achromatic metallurgical objective: LMPL5X /0.15 /WD10.8 、 LMPL10X/0.3 /WD10、 LMPL20X/0.45 /WD4	LMPLFL50X/0.55/WD7.8 LMPLFL100X/0.80 /WD2.1
Nosepiece	Quintuple nosepiece	—
Focusing Mechanism	coaxial focusing mechanism,Coarse range: 38mm, Fine range: 0.2mm, focusing accuracy: 0.002mm,With adjust the tightness device	—
Stage	Fixed platform: Size 160X250mm	—
Working table	Metal platform (center hole ϕ 12)	Metal platform (center hole ϕ 25),Stage extension plate
Moving scale	Low coaxial mechanical moving scale, travel 120x78mm	—
Reflected illumination system	Reflection type Cora illuminator ,with adjustable aperture stop and center adjustable field diaphragm, adaptive 90V-240V wide voltage, 12V50W halogen lamp The center is adjustable, and the brightness is continuously adjustable	—
CCD Mechanism	1X、Cmount adaptor	0.5X Cmount adaptor
Others	—	Filter set、Polarizer、analyzer、360 degree rotatable、high precision micrometer

GX53



GX53 Specifications

Item	Standard configuration	Optional
Optical system	Infinity color correct optical system	—
Eyepiece tubes	Trinocular viewing head ,45 degree inclined , gemel 360 degree rotatable, fixed eyepiece barrel, interpupillary distance 50-75mm, Two speed splitting ratio binocular: trinocular=100:0	—
Eyepiece	High eye point wide field plan eyepiece PL10X22mm, with adjustable diopter, micrometer available	High eye point wide field plan eyepiece PL15X16mm, with adjustable diopter
Objective	Long working distance infinity bright achromatic objectives (5X, 10X, 20X, 50X, 100X)	Long working distance infinity bright & dark field plan achromatic objectives (5X, 10X, 20X, 50X, 100X)
Nosepiece	Inward quintuple bright field nosepiece	Inward quintuple bright & dark field nosepiece
Frame	Reflected frame, low-position coaxial focusing system, coarse range 9mm (up 6.5mm, down 2.5mm), fine precision 0.002mm; with upper limit and tension adjustment knob; with switch for bright and dark field; with variable field diaphragm and aperture diaphragm, both center adjustable	—
Illumination	External wide voltage transformer, input 100-240V, output 15V13.4A, light continuously adjustable	—
Stage	Three layers rackless stage, size: 240mm X 250mm fixed platform, moving range: 50X 50mm; two-way rail drive, low-position handle knob	—
Camera adapter	1X focusing C-mount	0.35X/0.5X/0.65X
Others	—	Filter set, Polarizer, analyzer, 360 degree rotatable, high precision micrometer, Dlc attachment, filters



CX21 Specifications

Item	Standard configuration	Optional
Eyepiece tubes	trinocular , tilt 30°, 360° rotation (inward polarizer, can be switched)	—
Objective	Long working distance plan achromatic objective 5X/0.12, 10X/0.25, 20X/0.45, 40X /0.60(spring)	—
Nosepiece	Quadruple nosepiece, inward ball positioning	—
Eyepiece	10X wide-angle eyepiece, focus distance 25 mm, FOV(field of view) Φ18 mm	—
Stage	180 mm X 145 mm, moving range: 75 mm X 50	—
Condenser	Condenser N.A. 1.25,with aperture diaphragm , adjustable up and down	—
Color Filter	Blue, green, ground glass	—
Illumination	6V 20W halogen lamp lighting, brightness can be adjusted	—
Camera	—	650 lines, analog camera; Hd digital camera
Software	—	Camera with measurement software; Metallography measuring software
Monitor	—	22.5-inch monitor

CX31



CX31 Specifications

Item	Standard configuration	Optional
Optical system	Finity color corrected optical system	—
Eyepiece tubes	30° gemel binocular head	30° gemel trinocular head
Eyepiece	High eye-point wide field eyepiece PL10X/18mm, with micrometer	High eye-point wide field plan eyepiece PL10X/20mm; High eye-point wide field eyepiece WF15X/13mm, with micrometer; High eye-point wide field eyepiece WF20X/10mm
Objective	Plan destressing objective 4X/10X/20X/40X/60X	Long working distance achromatic objective (5X、10X、20X、50X、100X)
Focusing Mechanism	Low position coarse and fine coaxial focusing mechanism, Focus range: 28mm, fine precision: 0.002mm, with upper limit and adjust the tightness device.	Low position coarse and fine coaxial focusing mechanism, Focus range: 28mm, fine precision: 0.002mm, with upper limit and adjust the tightness device. Built-in 6V30W transmission light illuminator, up and down lighting switch
Nosepiece	Inwards centerable quadruple nosepiece	Inwards centerable quintuple nosepiece
Intermediate tube	Inward Bertrand lens, centerable, focusing adjustable	—
Analyzer	Pluggable analyzer, 360° rotatable, scale value 2°, precision 6'	—
Compensator	Gyps 1λ Φ18mm, first class (optical path difference 551nm); Mical 1/4λ, Φ18mm (optical path difference 147.3nm); Quartz Wedge (I-IV)	—
Stage	Rotating metal stage, graphite coating, anti-corrosive and anti-friction, Dia. 160mm, 360° rotatable, scale value 1°, precision 6', with locking device	—
Condenser	Destressing Abbe condenser	NA.1.25 Cora lighting condenser group
Illumination	wide voltage 100-240v, Switching power supply integrated brightness continuously adjustable design, so that the lamp is not easy to damage, preset center 6V20W halogen lamp (Kola lighting)	wide voltage 100-240v; Integrated brightness continuously adjustable design of switching power supply, preset center single 3W high brightness long life LED lamp (Kola lighting)
Camera adapter	0.5X type C interface, adjustable focus	0.35X/0.5X/0.65X
Others	—	Filter set, Professional moving ruler, high precision micrometer



BX43 Specifications

Item	Standard configuration	Optional
Optical system	Infinity color corrected optical system	—
Eyepiece tubes	30 °inclined, Infinity gemel Binocular head, interpupillary distance:54mm~75mm;Unilateral viewing adjustment: ±5 diopter	—
Eyepiece	PL10X22mm high eye-point plan wide field eyepiece	PL10X22mm high eye-point plan wide field eyepiece(adjustable visibility,Micrometer attachable)/PL15X16mm high eye-point plan wide field eyepiecePL15×16mm
Objective	Infinity long working distance Brightfield achromatic metallurgical objective (5X、10X、20X、50X)	Infinity with correcting semi-apochromatic objective 50X
Nosepiece	Quintuple nosepiece	—
Coarse and fine adjustment Mechanism	Reflected frame with low position coarse and fine coaxial focusing mechanism, coarse range:28mm, fine precision: 0.002mm, with upper limit and adjust the tightness device.With platform position up and down adjustment mechanism, maximum sample height 78mm	Frame with low position coarse and fine coaxial focusing mechanism,coarse range:28mm,fine precision: 0.002mm, with upper limit and adjust the tightness device.With platform position up and down adjustment mechanism, maximum sample height 28mm
Stage	Double-layer mechanical stage, low hand position X, Y direction coaxial adjustment; Platform 175×145mm, moving range: 76mm×42mm	Reflective metal plate, transparent and reflective glass plate
Reflected illumination system	Bright field illuminator wide voltage100V-240V_AC50/60Hz with inclined illumination device, single high-power 5WLED,warm color,aperture stop (centerable), field diaphragm (centerable)	—
Transmitted illumination system	Wide voltage 100V-240V_AC50/60Hz transmitted Light Chamber, single high-power 5WLED,warm color	—
Condenser	Transmission swing-out achromatic condenser (N.A.0.9) with variable aperture stop and adjustable center	—
CCD adaptor	1X、C mount adaptor	0.35X、0.5X、0.65X Cmount adaptor
Others	—	Filter: Yellow, IF550 filter, LBD filter, neutral filter;High precision micrometer, grid value 0.01mm

BX53



BX53 Specifications

Item	Standard configuration	Optional
Optical system	Infinity color corrected optical system	—
Eyepiece tubes	5-35° adjustable, inverted image, Infinity gemel trinocular head, interpupillary distance: 50-76mm, three splitting ratio:50:50;100:0 or 0:100	30° adjustable, inverted image, Infinity gemel trinocular head, interpupillary distance: 50-76mm, Three splitting ratio binocular: trinocular =100:0 or 20:80 or 0:100
		30° adjustable, erected image, Infinity gemel trinocular head, interpupillary distance: 50-76mm, Two splitting ratio binocular: trinocular =100:0 or 0:100
Eyepiece	High eye point wide field plan eyepiece PL10X25mm, adjustable visibility	High eye point wide field plan eyepiece PL10X25mm, adjustable visibility with single scale cross divider
Objective	Semi-apochromatic metallographic objective BDFL5X-DIC、BDFL10X-DIC、 BDFL20X-DIC、 BDFL50X	Brightfield Semi-apochromatic metallographic objective(5X、 10X、 20X、 50X、 100X) 、 Super-Long Working Distance Darkfield Semi-apochromatic metallographic objective(20X)、 Infinity Semi-apochromatic metallographic with corrected objective(50X)
Nosepiece (with DIC slot)	BD Sextuple Nosepiece(with DIC slot)	Brightfield quintuple Nosepiece、 Brightfield Sextuple Nosepiece、 BD Sextuple Nosepiece
Frame	Reflected frame with low position coarse and fine coaxial focusing mechanism, coarse range:25mm, fine precision: 0.001mm, with adjust the tightness device and random upper limit device.Inward 100-240V wide voltage system, using digital dimming, with light intensity setting and reset function	Reflected and transmitted dual purpose frame with Front low position coarse and fine coaxial focusing mechanism, coarse range:25mm, fine precision:0.001mm, with adjust the tightness device and random upper limit device. inward 100-240V wide voltage system, dual power output, digital dimming, with light intensity setting and reset function,Reflected/transmitted light switch, inward transmitted light filter(LBD, ND6, ND25)
Stage	Right hand 4 inch mechanical platform, travel 105mm x102mm, with Y axis locking mechanism, with transmission system light shield, with glass platform	Reflective metal plate, transparent and reflective glass plate
Condenser	Roll-out type achromatic condenser (N.A.0.9)	—
Reflected illumination	BD (Brightfield/Darkfield) with variable aperture diaphragm and field diaphragm, center adjustable;with BD(Brightfield/Darkfield) Switching device ;With filter slot, with polarizer and analyzer slot	—
Light chamber	12V100W Halogen lamp room, transmitted、 reflected both can use, reservation center	—
CCD adaptor	0.5X CTV, Type C interface, adjustable focus	0.35/0.65/1X CTV
Others	polarizer , 360 ° rotating analyzer,LBD white light interference filter;	DIC differential interference module



MX53 Specifications

Item	Standard configuration	Optional
Optical System	Infinity color correct optical system	—
Eyepiece tubes	30° inclined trinocular head , inverted image,Infinity gemel trinocular head	5-35° adjustable, erected image, Infinity gemel trinocular head, interpupillary distance: 54-76mm, diopter adjustment: ±5 diopter,splitting ratio:100:0 or 0:100 (Support 22/23/16mm field of view)
Eyepiece	High eye point wide feld plan eyepiece PL10X/22mm	—
Objective	Infinity long working distance Brightfield achromatic metallurgical objective (5X、10X、20X、50X)	LCD with correcting semi-apochromatic objective 50X、Long Working Distance Brightfield/Darkfield achromatic metallurgical objective (5X、10X、20X、50X、100X)、Infinity long working distance Brightfield/Darkfield Semi-apochromatic metallographic objective (5X、10X、20X、50X、100X)、Super-Long Working Distance Brightfield/Darkfield Semi-apochromatic metallographic objective (20X、50X)
Nosepiece	Brightfield Quintuple nosepiece, with DIC slot	Brightfield/Darkfield Quintuple nosepiece, with DIC slot
Focusing Mechanism	Reflected frame with Front low position coarse and fine coaxial focusing mechanism, coarse range: 30mm, fine precision: 0.001mm, with upper limit and adjust the tightness device	Reflected/transmitted frame with Front low position coarse and fine coaxial focusing mechanism, coarse range: 30mm, fine precision: 0.001mm, with upper limit and adjust the tightness device. Built-in 5W warm LED transmitted light lighting system, up and down can be independently controlled
Stage	4 inches two-layer mechanical stage with low position coaxial adjustment; platform size: 230mm x 215mm,moving range: 105mm x 105mm; Metal stage (Left/right hand, reflected use)	6 inches three-layer mechanical stage with low position coaxial adjustment; platform size: 445mmx240mm,Reflective lighting moving range: 158mmx158mm, transmission lighting moving range: 100mmx100mm.With clutch handle for fast movement over full travel range, glass stage (for transparent reflection)
Illumination	Bright field illuminator, cora illumination system, with iris aperture diaphragm and feld diaphragm,center adjustable; wide voltage 100-240v with inclined illumination device, single high-power 5WLED,warm color(color temperature 2850k-3250k)	BD(Brightfield and Darkfield) reflection illuminator, with iris aperture diaphragm and feld diaphragm,center adjustable;with Bright/dark field switch; With filter slot and polarizing device slot
Camera adapter	0.5X C-mount adapter, focus adjustable; digital camera relay lens	0.35X/0.65X/1X
Others	polarizer , analyzer , 360° rotating analyzer, Filter set	DIC differential interference module

MX63



MX63 Specifications

Item	Standard configuration	Optional
Optical System	Infinity color correct optical system	—
Eyepiece tubes	Infinity gemel trinocular head ,30' inclined,inverted image, interpupillary distance: 50-76mm,three splitting ratio:0 : 100 ; 20 : 80 ; 100 : 0	Infinity gemel trinocular head ,30' inclined,Erected image, interpupillary distance: 50-76mm, splitting ratio:100:0 or 0:100
Eyepiece	High eye point wide field plan eyepiece PL10X/25mm,adjustable visibility with single scale cross divider	—
Objective	Brightfield Semi-apochromatic metallographic objective (5X、10X、20X、50X)	Semi-apochromatic metallographic objective (5X、10X、20X、50X、100X) 、 Infinity super-long working distance BD(Brightfield/Darkfield) Semi-apochromatic metallographic objective (20X) 、 Infinity long working distance BD(Brightfield/Darkfield) Semi-apochromatic metallographic objective (50X、100X) 、 BD(Brightfield/Darkfield) Quintuple nosepiece / Sextuple Nosepiece,with DIC slot
Nosepiece	Brightfield Quintuple nosepiece, with DIC slot	Quintuple nosepiece / Sextuple Nosepiece,with DIC slot
Focusing Mechanism	Reflected frame, with front low position coarse and fine coaxial focusing mechanism, coarse range:33mm, fine precision: 0.001mm, with adjust the tightness device and random upper limit device.Inward 100-240V wide voltage system, ,with light intensity setting button and reset button	Reflected / transmitted frame ,with Front low position coarse and fine coaxial focusing mechanism, coarse range:35mm, fine precision: 0.001mm, with adjust the tightness device and random upper limit device.
Stage	8-inch three-layer mechanical mobile platform, low hand position X, Y direction coaxial adjustment; Platform area: 525mmX330mm, moving range: 210mmX210mm; With clutch handle, it can be used for fast movement in the full range of travel; Glass stage, (for reflection)	12-inch three-layer mechanical mobile platform, low hand position X, Y direction coaxial adjustment; Platform area 718mmX420mm, moving range: 356mmX305mm; With clutch handle, it can be used for fast movement in the full range of travel; Glass stage / Electric platform: area 495mmX641mm, moving range: 306mmX306mm;Software control X, Y movement, repeated positioning accuracy, (3+L/50) μ m with flat platform
Illumination	12V100W Halogen lamp,Brightfield reflection illuminator ,with variable aperture stop, field diaphragm, adjustable center; With filter slot and polarizing device slot	BD(Brightfield / Darkfield) reflection illuminator, with variable electric aperture stop, field diaphragm, center adjustable; with Brightfield and Darkfield switching device ; With filter slot
Camera adapter	0.5X C-mount adapter, focus adjustable	0.35X/0.65X/1X
Others	polarizer , 360 ° rotating analyzer. Interference filters for reflection	DIC differential interference module. 8 inch crystal disc. 12 inch crystal disc

MU SERIES



MU SERIES



MU Series Specifications

Model	MU400	MU800	MU1200	MU1212	MU1600
X/Y Stroke(mm)	100×100	200×150	300×200	300×300	400×300
Z Focus Stroke(mm)	200				
Linear scale resolution	Metal Grating scale, resolution 0.1μm				
Light Sources	White LED transmission condenser light source				
X/Y/Z Guide Rail	High precision guide rail				
X/Y Transmission	Open and close nut & precision lead screw				
Z Transmission	Coarse/fine gear focusing module				
Measuring Accuracy	2.5μm+L/150				
Z Accuracy	2.0μm+L/50				
Body Flatness Accuracy	≤10μm				
Calibration Scale	Jinuosh				
Glass Loading Capacity	20KG				

MMI SERIES

-  **BF** Bright Field (BF) Observation
-  **DIC** Differential Interference Contrast (DIC) Observation
-  **PO** Polarized Light (PO) Observation
-  **Transmitted Light** Illumination
-  **Motorized Operation**
-  **System Combination**
-  **DF** Dark Field (DF) Observation
-  **FL** Fluorescence (FL) Observation
-  **IR** Infrared (IR) Observation
-  **LED Illumination**
-  **Electrostatic Discharge (ESD) Treatment**
-  **Customizable Stage**



MMI SERIES



Measuring stroke(mm)

Model	MMI300	MMI400	MMI500
X	300	400	500
Y	200	300	300
Z	200	200	200

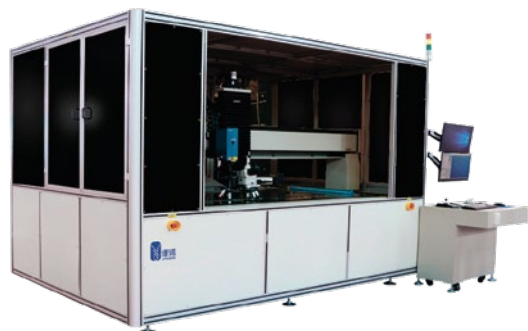
*Resolution: 0.1μm



Measuring stroke(mm)

Model	MMI600	MMI800	MMI1000
X	600	800	1000
Y	400	600	800
Z	200	200	200

*Resolution: 0.1μm



Measuring stroke(mm)

Model	MMI1200	MMI1600	MMI2000	MMI2600	MMI定制
X	1200	1600	2000	2600	—
Y	1000	1200	1600	1800	—
Z	200	200	200	200	—

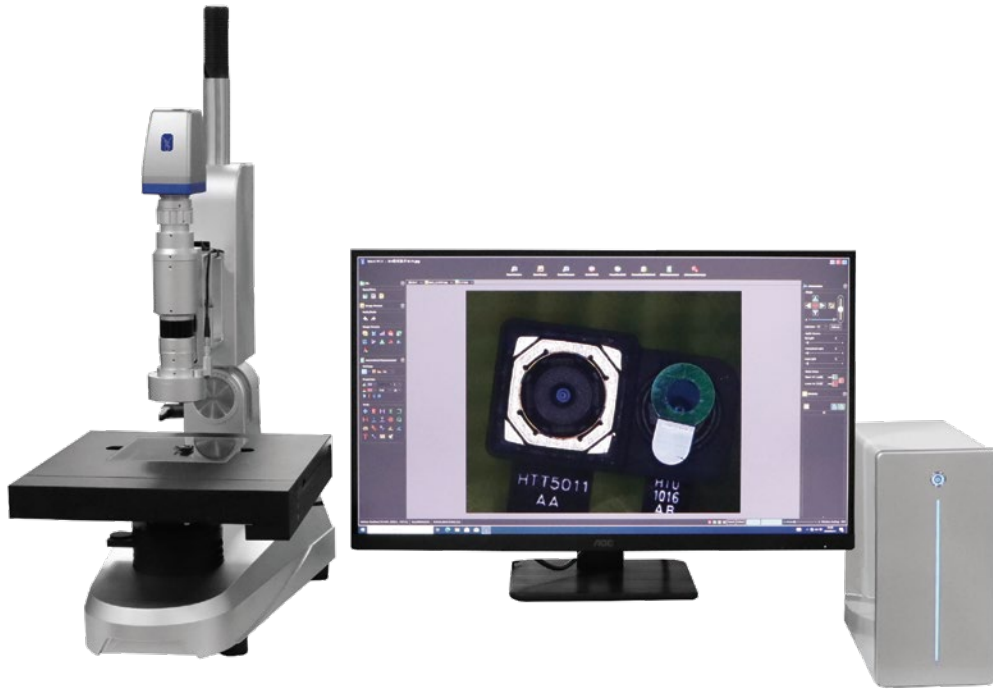
*Resolution: 0.1μm



SEM Series Specifications

Model	SEM 3000	SEM 5000	SEM 8000
Resolution	10nm(15KV,BSE)	5nm(30KV,SE)	3nm(30KV,SE)
Magnifications	30X~50,000X	30X~200,000X	30X~300,000X
Accelerating Voltage	1.0KV~15KV	1.0KV~30KV	
Detector	BackScattered Electron (SE Optional)	Secondary Electron(BSE Optional)	
Stage System	XY(20mm),Z(0~20mm) XY 2-axis Motorized	XY(40mm),R(360°) Z(0~30mm),Tilt(-20°~90°) 5-axis Motorized	XY(60,40mm),R(360°) Z(0~40mm),Tilt(-20°~90°) 5-axis Motorized
Electron Gun	Pre-centered cartridge Tungsten(W)Filament		Tungsten(W) or CeB6 Filament
Aperture(O.L)	Single Type	Variable Type(30/50/50/100μm)	
Beam Shift	XY 100μm(±50)		
Scan Mode	320×240,1280×960,640×480,2560×1920,5120×3840		
Pump System	Initial Vacuum:Rotary(100L/min),High Vacuum:Turbo Molecular(80L/sec)/Full Automation		
SEM Option	SE Detector,Low Vacuum	BSE Detector,Low Vacuum	BSE Detector,Low Vacuum, Chamber Scope

VHX SERIES



VHX Series Specifications

Model		VHX 5000	VHX 8000
X/Y Platform		100×100mm Manual platform	100×100mm Electric platform
Z axis		82mm effective travel(electrical contro)	
Camera part	Image sensor	1/1.8" 63MP	
	Display pixel	3072x2048	
	Scanning mode	line by line scan	
Light source	Light source	High brightness LED	
	Lifetime	40000 hour(Standard reference value)	
	Colour Temperature	5700K (Typ)	
Device Interface	PC output	USB3.0	
	Dedicated stand output	Special interface	
	Interface expansion	USB3.0	



ABOUT JINUOSH

CUSTOMER FIRST QUALITY CONTROL TEAM WORK

Guangdong Jinuosh Technology Co., Ltd. is a hightech enterprise egaged in the research and development,production and sales of optical microscope, precision measuring instruments experimental equipment and various optica components and components, with a technical teamand management team specializing in the development of advanced products and proces research.

Always follow: "customer first, quality first perfect" quality policy, wholeheartedly for domesti and foreign customers to provide beautiful shape,excellent performance, reasonable price,user satisfaction's testing equipment products, the products are mainly exported,our company has won the trust and praise of many customers by providing allround assistance, high quality and sincere service. The company has gradually established the leading position in the testing instrument industry in China.In the domestic and international markets to establish a good brand, with its strong strength and good reputation in the industry, to become the world's top brands of excellent partners.

GUANGDONG JINUOSH TECHNOLOGY CO., LTD

Service Hot: 4000 628860

Tel:0769-22820867

E-mail : Sales1@jinuosh.com

Website: www.jinuosh.com

Address: No.25 Dongke Road,Dongcheng Distric,Dongguan city,Guangdong province,China