



GUANGDONG JINUOSH TECHNOLOGY CO., LTD

E SERIES

MANUAL VISION MEASURING SYSTEM

MAKE MORE ACCURATE

**METROLOGY SOLUTIONS
FOR ALL MANUFACTURINGS**

High Precision | Smart Software | R&D Team

ABOUT JINUOSH

CUSTOMER FIRST QUALITY CONTROL TEAM WORK

Guangdong Jinuosh Technology Co., Ltd. is a hightech enterprise engaged in the research and development, production and sales of optical microscope, precision measuring instruments experimental equipment and various optica components and components, with a technical team and management team specializing in the development of advanced products and process research.

Always follow: "customer first, quality first perfect" quality policy, wholeheartedly for domestic and foreign customers to provide beautiful shape, excellent performance, reasonable price, user satisfaction's testing equipment products, the products are mainly exported, our company has won the trust and praise of many customers by providing allround assistance, high quality and sincere service. The company has gradually established the leading position in the testing instrument industry in China. In the domestic and international markets to establish a good brand, with its strong strength and good reputation in the industry, to become the world's top brands of excellent partners.

GUANGDONG JINUOSH TECHNOLOGY CO., LTD

Service Hot: 4000 628860

Tel: 0769-22820867

E-mail: Sales1@jinuosh.com

Website: www.jinuosh.com

Address: No.25 Dongke Road, Dongcheng Distric, Dongguan city, Guangdong province, China



E SERIES

MANUAL VISION MEASURING SYSTEM



E series with high reliability and good dynamic performance .It is dimensional measurement has met the demands of rigorous quality control departments in numerous industrial fields.

Applicable to all the application fields for the purpose of two-dimensional coordinate measurement. Easy to operate and save time.Such as mobile phone, tablet computer, LED,PCB, plastic, metal stamping parts, injection molding, die cutting, electronic industry and other products of geometric size detection.

METROLOGY SOLUTIONS FOR ALL MANUFACTURINGS

PRODUCT INTRODUCTION

Features

- Granite base and pillar, good stability.
- high-precision instrument optical ruler and precision worktable.
- M-VM Measuring Vision measurement software improves quality control to a new level.
- Adopt high-definition zoom lens and high-resolution color digital camera to ensure clear picture quality without distortion.
- Optional contact probe and three-dimensional measurement software can be used to upgrade the machine to a contact three-dimensional measuring machine.



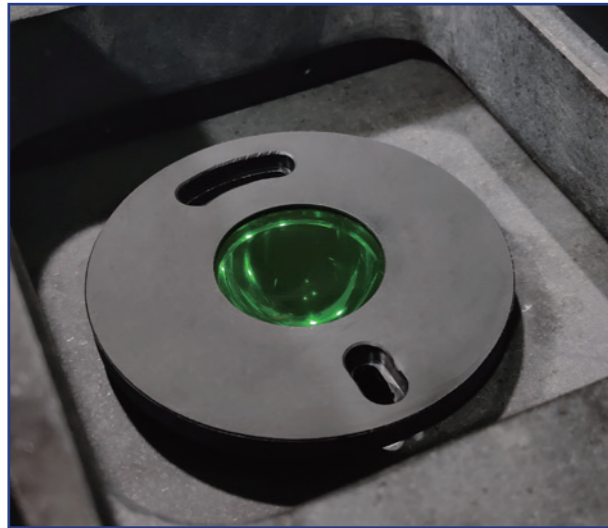
Measuring stroke(mm)

| | E200 | E300 | E400 | E500 |
|---|------|------|------|------|
| X | 200 | 300 | 400 | 500 |
| Y | 100 | 200 | 300 | 400 |
| Z | 200 | 200 | 200 | 200 |

Resolution: 0.5μm

Optical System

Manual operation measurement, the lens and light source position can be adjusted up and down, easy to operate. LED cold light source to avoid heat deformation of the work piece under test. Various forms of light source, ensure to meet the diversity of measurement requirements.



Profile Light



Surface Ring Light

Laser Point

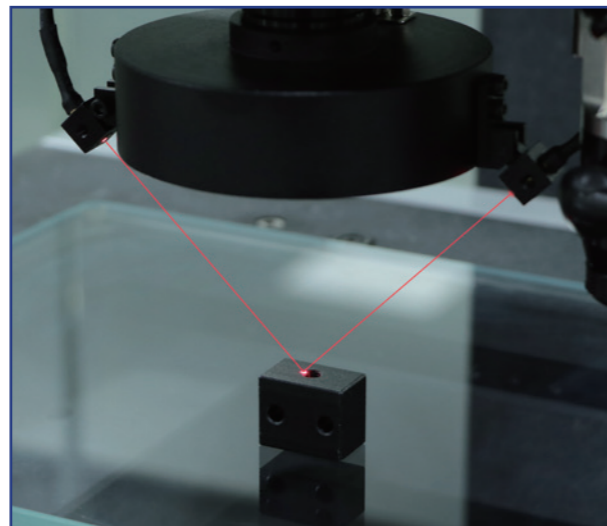
Quickly and accurately help you find the measurement position. Achieve fast focus.



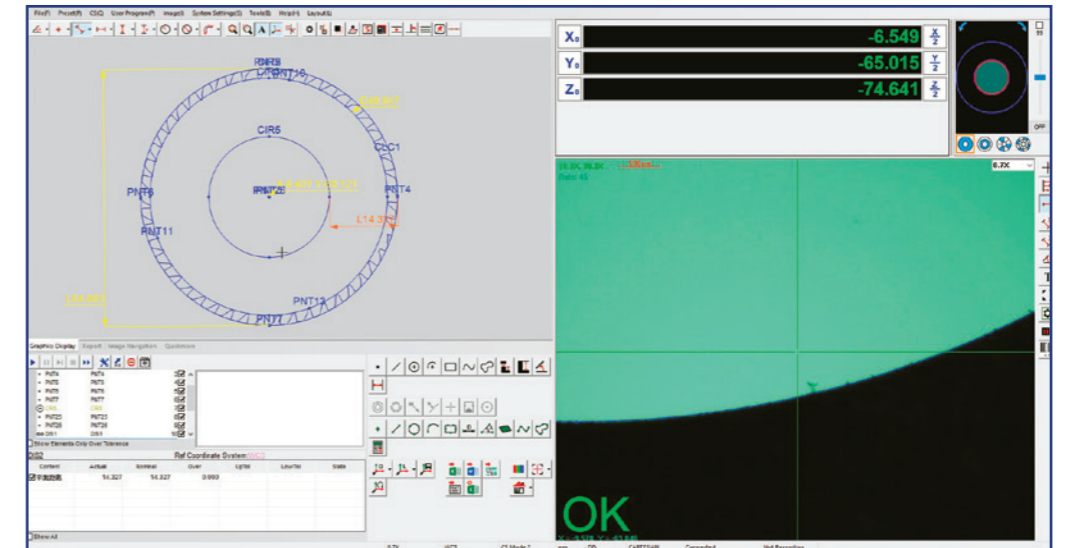
Camera



Linear encoder



SOFTWARE



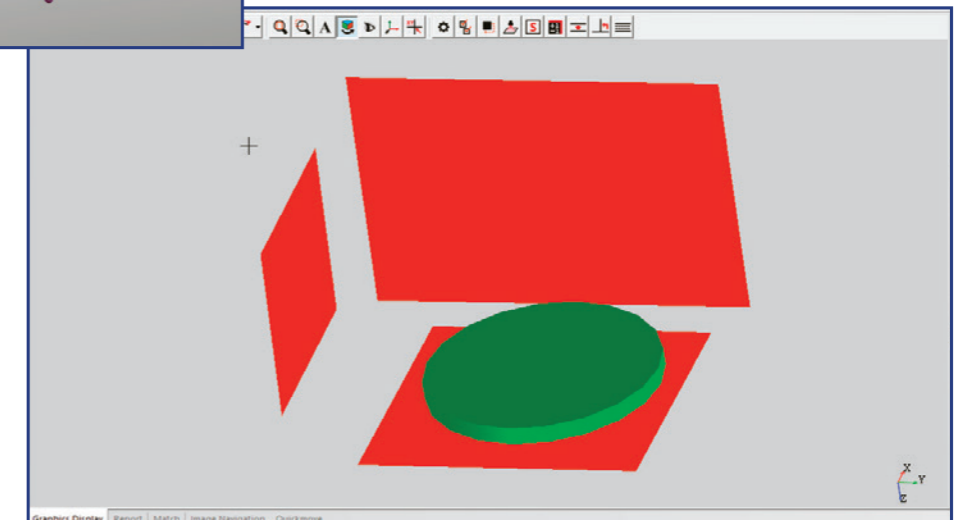
M-VM ManualMeasure, dimensional measurement software for the ever-evolving E series. Support functions to create measurement programs have been further enhanced, making fast, highly accurate dimensional measurements easier than ever before.



Touch Probe

Optional probe can have 3D measuring function, intuitive 3D graphic display, let users improve the efficiency of probe measurement.

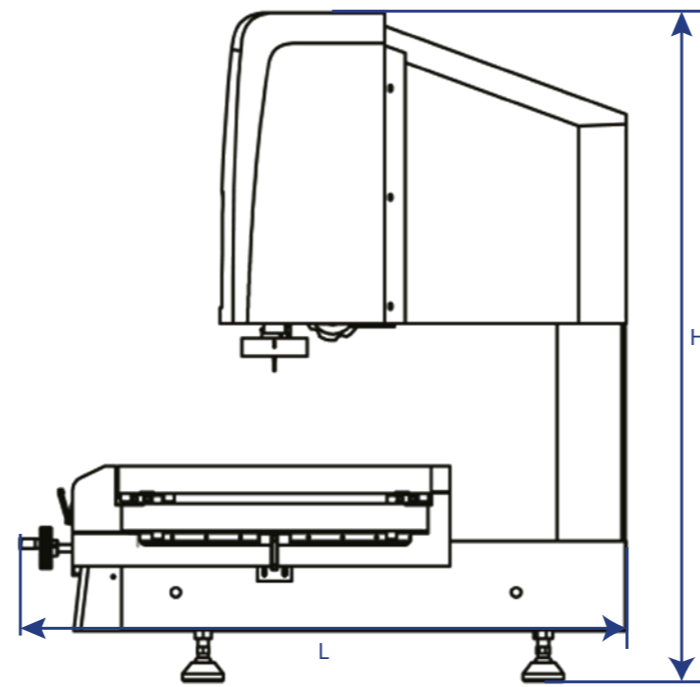
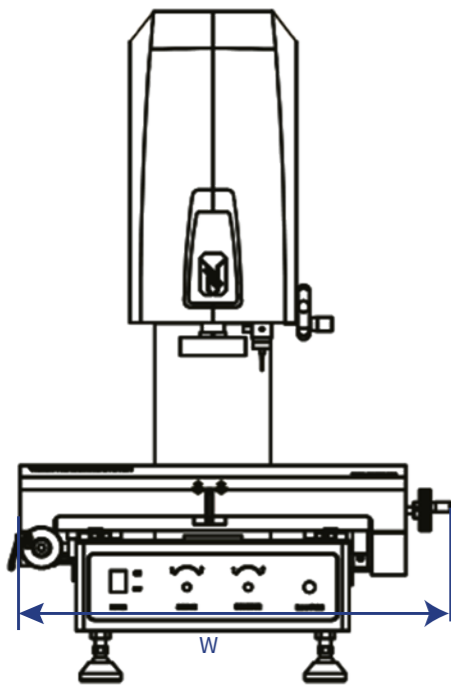
OPTIONAL



SPECIFICATIONS

*(L= is the measured length, unit mm)

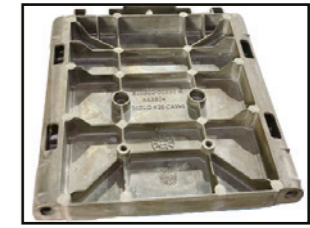
| Model | E200 | E300 | E400 | E500 |
|--------------------------|--|-------------|-------------|--------------|
| Stage glass size(mm) | 228×128 | 328×228 | 428×328 | 528×428 |
| Maximum stage loading | 20KG | | | |
| X/Y Linear Accuracy | (2.5+L/200)μm | | | |
| Z Accuracy | (3.0+L/50)μm | | | |
| Observation and Image | 1/2 "Gige Color Camera,1.3MP | | | |
| | Zoom Lens:0.7X - 4.5X | | | |
| | Monitor magnification :40X-250X | | | |
| | Working distance:90mm | | | |
| | Jinuosh M-VM Measurment software | | | |
| Lens position identifier | Double laser pointer | | | |
| Illumination unit | White LED ring light source + Green LED transmission parallel light source | | | |
| Net Weight | 95KG | 135KG | 217KG | 297KG |
| Dimensions(mm) | 720×470×860 | 740×580×930 | 890×650×980 | 1040×740×980 |



Application

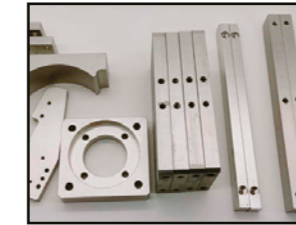
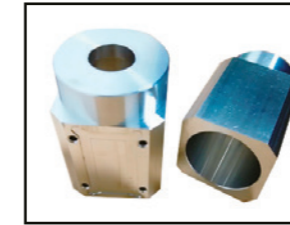
◆ Hardware industry

Including hardware parts, die casting, screws, springs, gears, etc



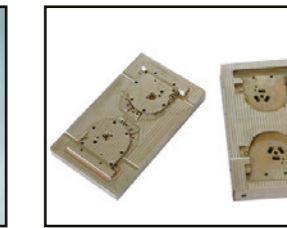
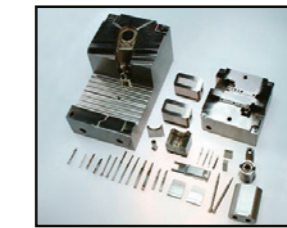
◆ Machining industry

Including car, milling, grinding, CNC and other mechanical parts, etc



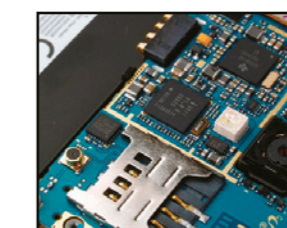
◆ Mold industry

Including mold products, mold parts, mold inserts, mold kernel, mold core



◆ 3C industry

It includes glass cover plates, spare parts, chips, circuit boards and touch screens of mobile phones, ipads ,etc



◆ Automobile industry

Including auto parts, auto modules

