



GUANGDONG JINUOSH TECHNOLOGY CO., LTD

G SERIES

AUTO VISION MEASURING SYSTEM

MAKE MORE ACCURATE

METROLOGY SOLUTIONS
FOR ALL MANUFACTURINGS

High Precision | Smart Software | R&D Team

ABOUT JINUOSH

CUSTOMER FIRST QUALITY CONTROL TEAM WORK

Guangdong Jinuosh Technology Co., Ltd. is a hightech enterprise engaged in the research and development, production and sales of optical microscope, precision measuring instruments experimental equipment and various optica components and components, with a technical team and management team specializing in the development of advanced products and process research.

Always follow: "customer first, quality first perfect" quality policy, wholeheartedly for domestic and foreign customers to provide beautiful shape, excellent performance, reasonable price, user satisfaction's testing equipment products, the products are mainly exported, our company has won the trust and praise of many customers by providing allround assistance, high quality and sincere service. The company has gradually established the leading position in the testing instrument industry in China. In the domestic and international markets to establish a good brand, with its strong strength and good reputation in the industry, to become the world's top brands of excellent partners.

GUANGDONG JINUOSH TECHNOLOGY CO., LTD

Service Hot: 4000 628860

Tel: 0769-22820867

E-mail: Sales1@jinuosh.com

Website: www.jinuosh.com

Address: No.25 Dongke Road, Dongcheng Distric, Dongguan city, Guangdong province, China



AUTOMATIC IMAGE MEASURING INSTRUMENT

AUTO VISION MEASURING SYSTEM

G SERIES OF COLUMN TYPE

PRECISION MEASURING MODELS FOR SMALL-SIZED PARTS



METROLOGY SOLUTIONS FOR ALL MANUFACTURINGS

Features

- Granite base and pillar, good stability.
- Moving Column type structure, measuring workpiece is fixed.
- Four-axis CNC fully auto close loop control, auto measurement.
- Gige high-resolution digital camera, to ensure clear image without distortion.
- High-resolution motorized coaxial zoom lens, accurate doubling and one times pixel correction only needed.
- Brand linear scale, resolution is 0.1um, grinding ball screw and AC servo motor etc. to ensure the precision and stability of the motion system.
- With programmable surface 7-ring 8-division LED Cold Illumination and contour LED parallel illumination and built-in intelligent light adjustment, it can automatic control the brightness in the 8-division.



PRODUCT INTRODUCTION

Measuring stroke(mm)

	G300	G400	G500
X	300	400	500
Y	200	300	400
Z	200	200	200

Resolution: 0.1μm

AUTO VISION MEASURING SYSTEM

HIGH PRECISION IMAGE MEASURING INSTRUMENT

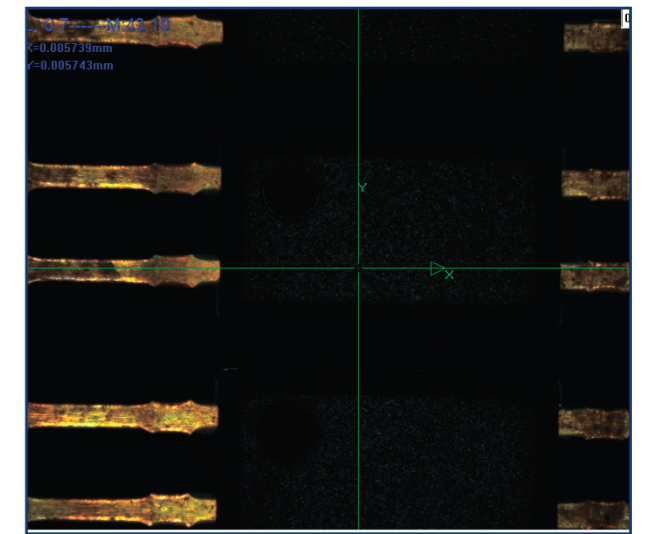
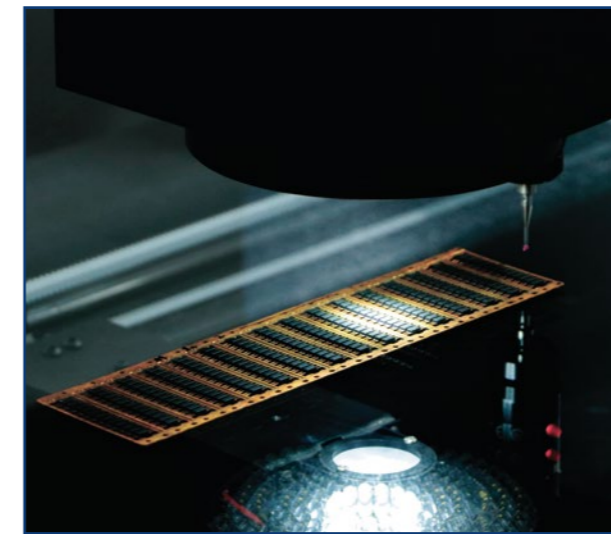
MODELS FOR MEASURING LARGE-SIZED PARTS



METROLOGY SOLUTIONS FOR ALL MANUFACTURINGS

Features

- Granite base and pillar, good stability.
- Three-axis CNC fully auto close loop control, auto measurement.
- Moving multiple type of structures, bridge measuring workpieces are fixed.
- Accurate measurement can be achieved despite variation in component positioning.
- HD color Gige camera to meet the needs of clear observation and accurate measurement.
- High-resolution motorized coaxial zoom lens, accurate doubling and one times pixel correction only needed.
- Optional MCP Probe and Laser Sensor Module. Machines can be customized according to customers' requirements.
- Rineshaw linear scale, resolution is 0.1um, THK screw and Panasonic servo motor etc. to ensure the precision and stability of the motion system.
- With programmable surface 7-ring 8-division LED illumination and green LED parallel illumination and built-in intelligent light adjustment, it can automatically control the brightness in the 8-division.



PRODUCT INTRODUCTION

Measuring stroke(mm)

	G650	G850	G1000	G1200	G1600	G2000	G2600
X	550	650	800	1000	1200	1400	1600
Y	650	850	1000	1200	1600	2000	2600
Z	200	200	200	200	200	200	200

Resolution: 0.1μm



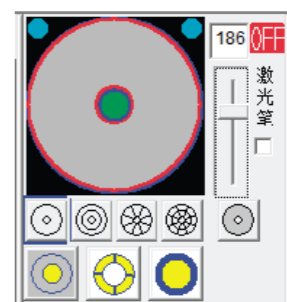
LIGHT SOURCE

VISION MEASUREMENT-HIGH SPEED, HIGH ACCURACY

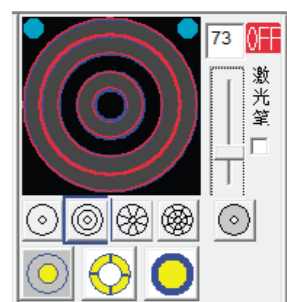
- ◆ Highest Magnification, 245X
- ◆ High Brightness Macro Ring Light
- ◆ Effective Lighting Control

- Surface Light
- Profile Light
- Coaxial Light

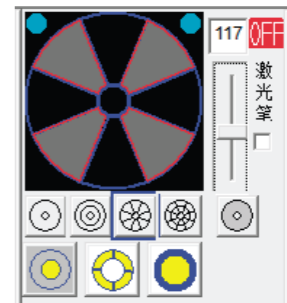
- ◆ Advanced Lighting Control (from 27' to 75°)
- 7 Rings
- 8 Sectors
- ◆ Video Image Saving, JPEG/BMP



Control as a Whole



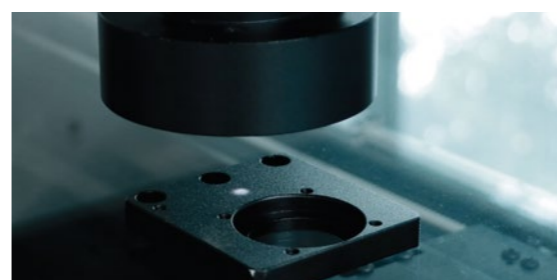
Control by Rings



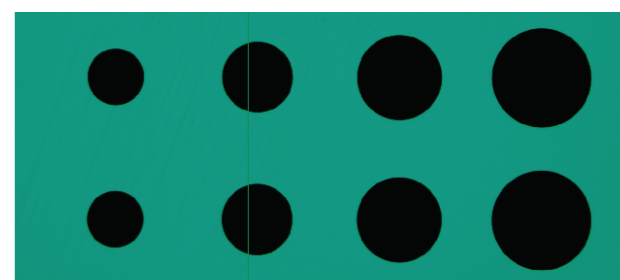
Control by Octants



Control by Segments

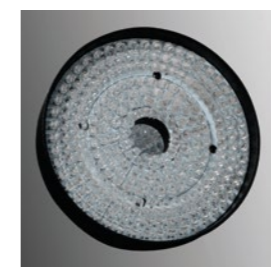


Coaxial Light



Profile Light

Accessories



OPTIONALS

Glass fixture pressure plate

The Platen is intended to hold a thin (< 5mm thick) work piece to allow it to be measured optically.

- ◆ System control safety protection automatically.
- ◆ The Platen can be opened and closed manually with InSpec's on-screen tools.
- ◆ The Platen can be automatically opened and closed during program playback with the Command Line Feature.



Sensor Probe



Displacement Sensor



Displacement Sensor

Powerful software for calculating accurate measurements



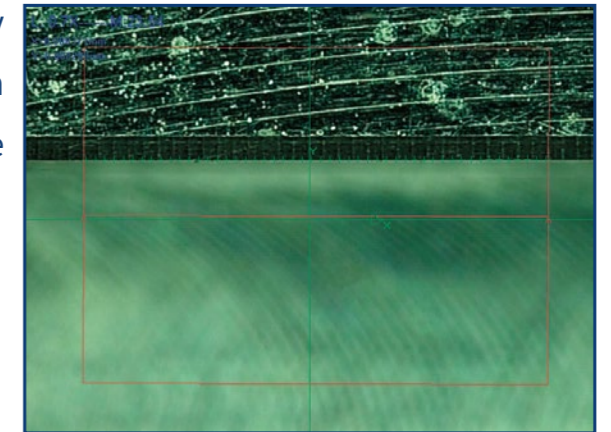
A-VM AutoMeasure, dimensional measurement software for the ever-evolving G series. Support functions to create measurement programs have been further enhanced, making fast, highly accurate dimensional measurements easier than ever.

SOFTWARE

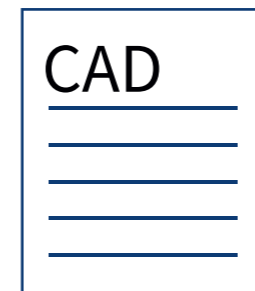
- ◆ GUI to efficiently create programs with intuitive operation and easy-to-understand guide.
- ◆ Inspection results, specially SPC used can be imported and automatically reflected into the measurement results.
- ◆ Measurement programs can be created by selecting the icon for edge detection and that which should be measured.
- ◆ Automatically optimizes the type of lighting, direction of ring illumination, and light intensity according to features of object measured. Makes it possible to reduce the amount of time and effort spent creating measurement programs.
- ◆ Computer-aided design (CAD) data can be used to create measurement programs for offline teaching before any sample is obtained. Working on a separate computer to the A-VM main unit frees it up so it can be used to full capacity.

Automated edge setting function

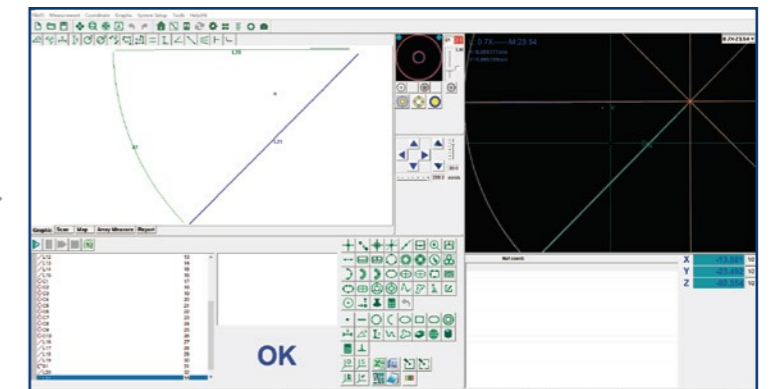
Edge detection conditions are automatically set by simply selecting the target edge from an image or profile. This reduces setup time and improves efficiency.



Computer aided design (CAD) data can be used to create measurement programs for offline teaching before any sample is obtained. Working on a separate computer to the A-VM main unit frees it up so it can be used to full capacity.

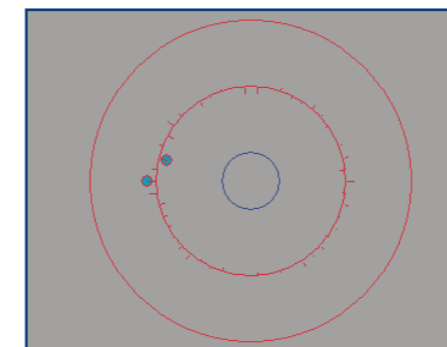


Prepare CAD data (DXF format)

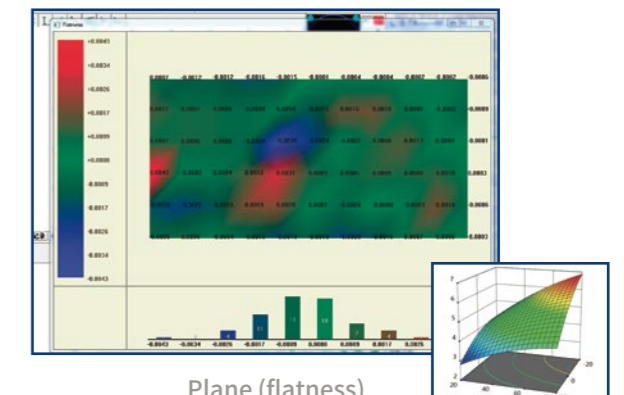


Create measurement program with imported CAD data

Result evaluations in line with tolerance standards.



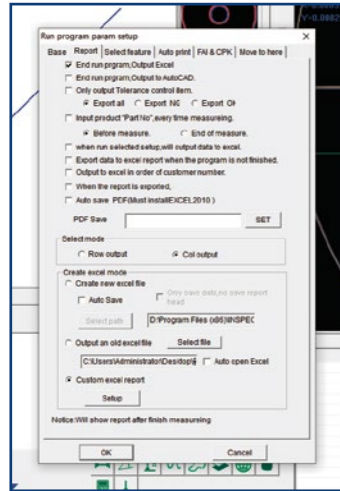
Circle (roundness)



Plane (flatness)

ImageFit QC

Inspection results used can be imported and automatically reflected into the measurement results. Pass/fail results and statistical data are generated automatically. The function to create graphs also helps visualize measurement results.



Parameter Settings

Content	Nominal	23-07-04	23-07-04	23-07-04	23:20:16
L8. L6	50	49.92	49.919	49.92	
L2. L4	35	35.194	35.199	35.194	
L1. L3	15	15.139	15.135	15.135	
L7. L5	30	29.93	29.93	29.925	
L5. L6	90	89.992	89.989	89.988	

Report of Measurement Results

Custom Fit QC

Measurement results are read into a few different templates and pass/fail results and calculation results are automatically exported. Graphs can be automatically generated to visualize measurement results.

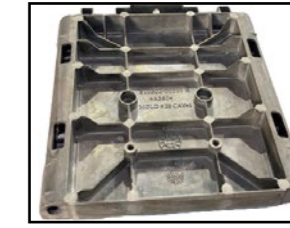
	A	B	C	D	E	F	G	H	I	J	K	L	M	N
1		Report Name:		workshop		Time:								
2		Part Name	Standard	workpiece	floor	First floor								
3		Part No.:	1	class	Day shift									
4		Operation:		work										
5		Company:	Guangdong	Jinuosh	Machina									
7		Nominal	Calibre	Calibre	Calibre	Calibre	Calibre	Calibre	Distance	Distance	Distance			
8			1.397	1.398	1.197	1.198	1.198	1.198	63.255	63.154	4.004			
9			1.398	1.398	1.198	1.197	1.198	1.197	63.254	63.154	4.003			
10			1.398	1.398	1.197	1.197	1.198	1.197	63.254	63.154	4.003			
11			1.398	1.398	1.198	1.197	1.198	1.197	63.253	63.154	4.003			
12			1.398	1.398	1.197	1.197	1.198	1.197	63.253	63.154	4.003			
13			1.398	1.398	1.198	1.197	1.198	1.197	63.254	63.155	4.003			
14			1.398	1.398	1.198	1.197	1.198	1.197	63.254	63.154	4.004			

Guangdong Jinuosh Technology Co., Ltd

Application

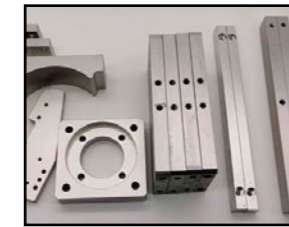
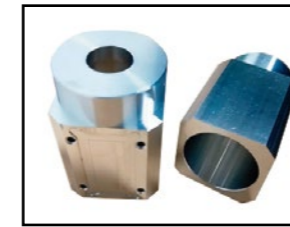
Hardware industry

Including hardware parts, die casting, screws, springs, gears, etc



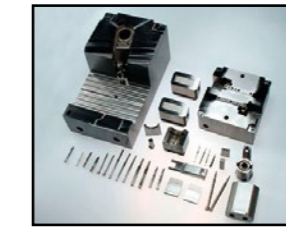
Machining industry

Including car, milling, grinding, CNC and other mechanical parts, etc



Mold industry

Including mold products, mold parts, mold inserts, mold kernel, mold core



3C industry

It includes glass cover plates, spare parts, chips, circuit boards and touch screens of mobile phones, ipads ,etc



Automobile industry

Including auto parts, auto modules



SPECIFICATIONS

*(L=is the measured length,unit mm)

Model	G300	G400	G500
Stage glass size(mm)	348×238	448×348	548×448
Maximum stage loading	20KG		
X/Y Linear Accuracy	(1.5+L/200)μm	(1.7+L/200)μm	
Z Accuracy	(5.0+L/100)μm		
Observation and Image	1/1.7" GIGE 2MP Color digital camera		
	Zoom Lens:0.7X - 4.5X auto zoom lens		
	Monitor magnification : 40X-245X		
	JINUOSH A-VM SYSTEM software		
	Working distance:82mm		
Illumination unit	White LED 7 ring 8 region programmable surface light source		
	Green LED transmission light source + coaxial light source		
Net Weight	310KG	420KG	620KG
Dimensions(mm)(L · W · H)	910×640×1650	1200×810×1650	1450×1100×1650

*(L=is the measured length,unit mm)

G650	G850	G1000	G1200	G1600	G2000	G2600
628×728	728×928	876×1096	1076×1296	1276×1696	1476×2096	1673×2654
30KG			50KG			
(2.3+L/200)μm			(4.0+L/150)μm			
(5.0+L/100)μm						
1/1.7" GIGE 2MP Color digital camera			1/1.7" GIGE 2MP Color digital camera			
Zoom Lens:0.7X - 4.5X auto zoom lens			Zoom Lens:0.7X - 4.5X auto zoom lens			
Monitor magnification : 40X-245X			Monitor magnification : 40X-245X			
JINUOSH A-VM SYSTEM software			JINUOSH A-VM SYSTEM software			
Working distance:82mm			Working distance:82mm			
White LED 7 ring 8 region programmable surface light source						
Green LED transmission light source + coaxial light source						
760KG	960KG	1200KG	1500KG	3500KG	5000KG	7000KG
1450×1150×1700	1800×1250×1700	1920×1420×1700	2250×1650×1700	2650×1850×1700	3050×2050×1700	3500×2700×1700

