

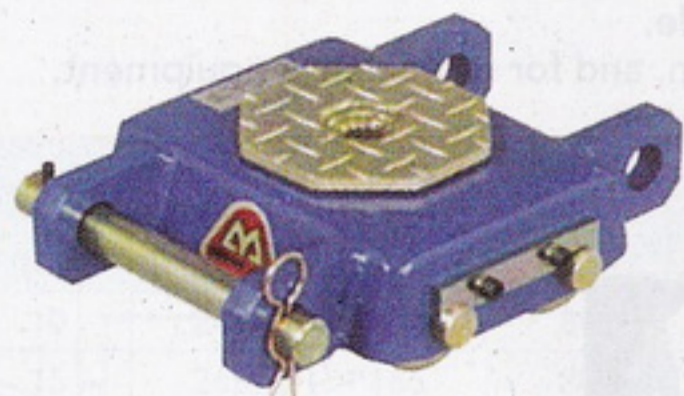
## ล้อเคลื่อนย้ายเครื่องจักรงานหมุนรอบตัว (ล้อเหล็ก)

### Freely Rotation Heavy Goods Transport Rollers (Steel)

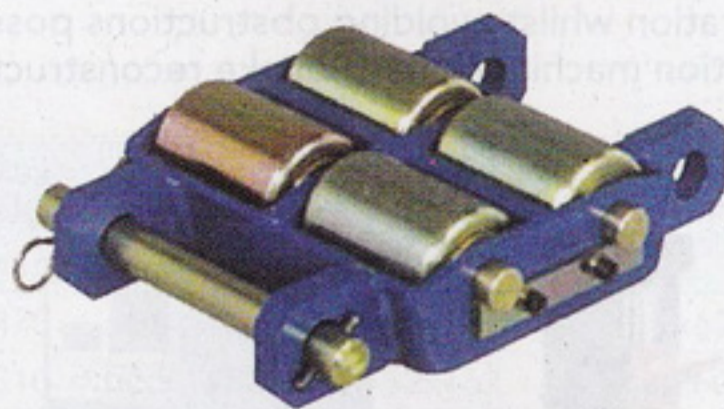


#### Steel Roller Type

- These rollers are suited to ultra-heavy transportation.
- When selecting a roller, please choose a type according to the weight of the heavy goods and the floor condition.



MSW-5S



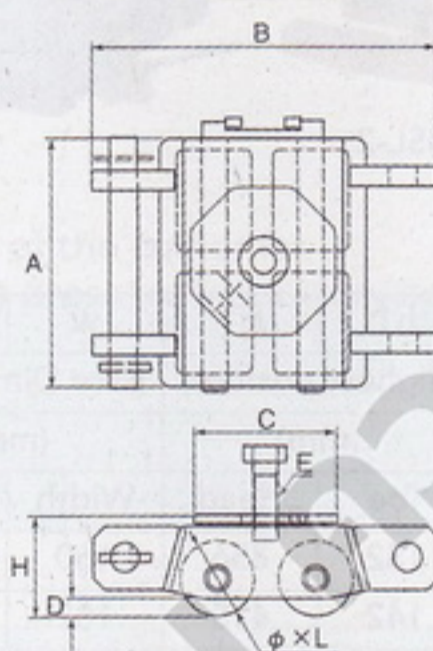
MSW-5S



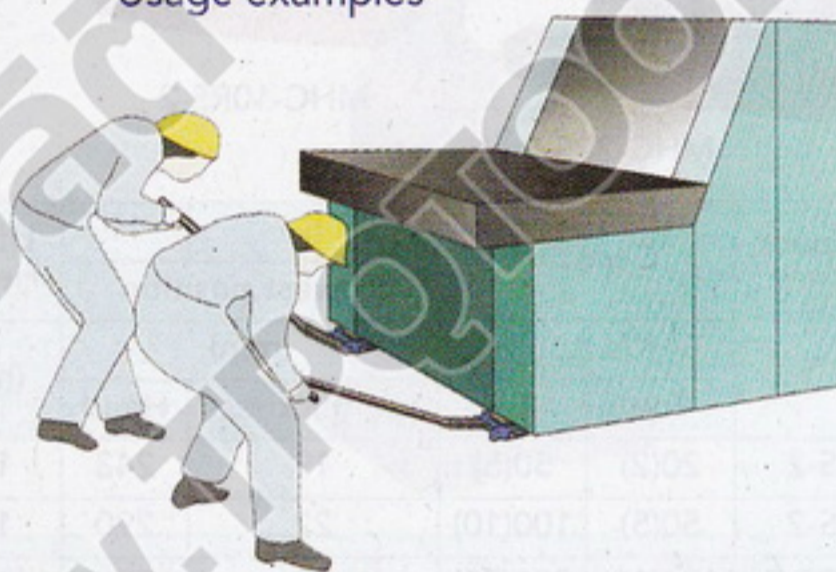
MSS-7.5S



MSB-7.5S



Usage examples



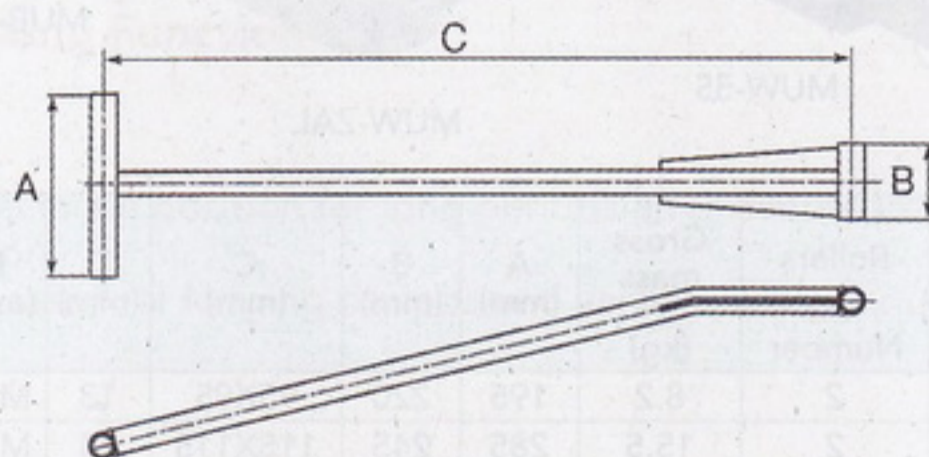
	Model	Specs. Model	Capacity (ton)	Ø x L Roller Dimensions (mm)	Rollers Number	Gross mass (kg)	A (mm)	B (mm)	C (mm)	D (mm)	E (mm)	H (mm)	Notes	
Steel body steel rollers	Single	MSS-5S	5	80x80	2	11	195	220	95x95	13	M20	105		
		MSS-7.5S	7.5	100x125	2	20	285	245	115x115	24	M20	128		
	Double	MSW-5S	5	60x80	4	14	195	276	115x115	14	M20	80		
		MSW-7.5S	7.5	80x80	4	18.5	195	310	155x155	14	M20	105		
		MSW-10S	10	100x125	4	37	285	355	185x185	21	M20	128		
	Bogie	MSB-5S	80x80	5	80x80	2	22	250	327	155x155	10	M20	105	Front wheels rotate 25°
			50x73		2									
MSB-7.5S	7.5	100x125	2	36	291	362	185x185	13	M20	128				
		60x80	2											

## ด้ามลากสำหรับล้อย้ายเครื่องจักร

### Handle For The Masada Roller

#### Operating Handle

- Compatible with all of our rollers



Model	Specs.	Width (mm)		Length (mm)	Gross mass (kg)
		A	B		
M-1000		240	100	1,000	2.9

