

8MP+4MP Bi-Channel LightHunter Intelligent Bullet Network Camera

IPC28184EA-ADX5K-F40-I1



Features

- One IP with two channels, combines the details and full view, making target area stand out without losing overall view
- 3840*2160@30fps in the main stream of detailed channel with ISP algorithm, provide high definition image
- Ultra 265, H.265, H.264, MJPEG
- Built-in dual Mic, efficiently realizes the noise control by noise reduction algorithm
- Two types of illumination light, offer three illumination modes and support sound-light warning
- Detailed channel supports electric control and tilt angle adjustment, easier for installation and debugging
- Switching among three Intelligent functions, suitable for various application scenes
- Mix-traffic detection, support human body, motor vehicle and non-motor vehicle image capture and attribute collection, realize data visualization management, allow users to get target information for further data analysis

- Smart intrusion prevention, support false alarm filtering, realize accurate detection based on specific target
- LightHunter technology ensures ultra-high image quality in low illumination environment Audio 2 in and 1 out, Alarm 3 in and 2 out

Specifications

Camera	Description
Sensor-Channel 1	1/1.8" CMOS
Min. Illumination-Channel 1	Colour:0.0005lux (F1.0, AGC ON)
Sensor-Channel 2	1/1.8" CMOS
Min. Illumination-Channel 2	Colour:0.005lux (F1.6, AGC ON) 0 lux with IR
Day/Night-Channel 2	IR-cut filter with auto switch (ICR)
Shutter	Auto/Manual, 1 ~ 1/100000s
Adjustment Angle	Tilt: -10° to 10° (electric control , for installation and debugging)
WDR	120dB
S/N	>56dB
Lens	Description
Lens Type-Channel 1	4mm
Iris—Channel 1	F1.0
Field of View (H)—Channel 1	94.7°
Field of View (V)—Channel 1	50.3°
Field of View (D)—Channel 1	116.5°
Lens Type-Channel 2	10 ~ 50 mm
Optical Zoom—Channel 2	5X
Iris—Channel 2	F1.6
Field of View (H)—Channel 2	33.8°~8.4°
Field of View (V)—Channel 2	18.8°~4.6°
Field of View (D)—Channel 2	39.9°~10.0°
DORI	Description
DORI Distance (Lens) — Channel 1	4mm

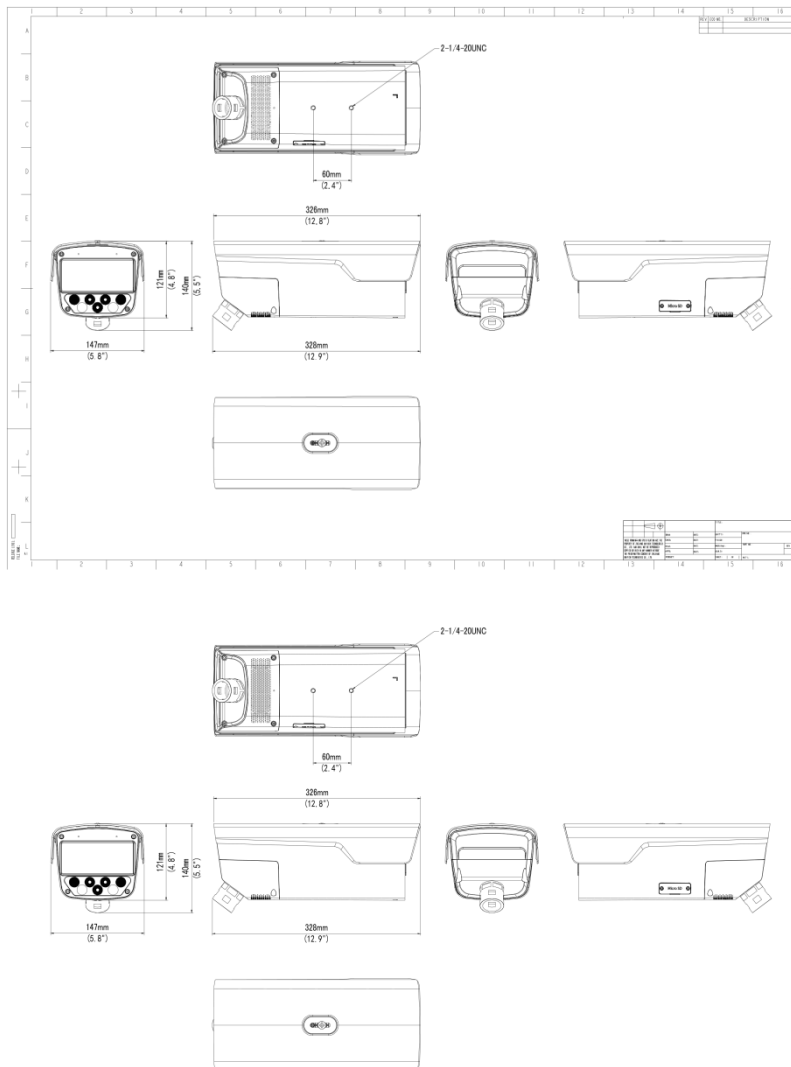
DORI Distance (Detect) — Channel 1	79.1m(259.6ft)
DORI Distance (Observe) — Channel 1	31.7m(103.9ft)
DORI Distance (Recognize) — Channel 1	15.8m(51.9ft)
DORI Distance (Identify) — Channel 1	7.9m(26.0ft)
DORI Distance (Lens) — Channel 2	10~50mm
DORI Distance (Detect) — Channel 2	292.5m(959.6ft)~1237.5m(4060.0ft)
DORI Distance (Observe) — Channel 2	117.0m(383.9ft)~495.0m(1624.0ft)
DORI Distance (Recognize) — Channel 2	58.5m(191.9ft)~247.5m(812.0ft)
DORI Distance (Identify) — Channel 2	29.3m(96.0ft)~123.8m(406.0ft)
Illuminator	Description
Warm Light Range—Channel 1	Up to 30m (98.43ft)
IR Range—Channel 2	Up to 50m (164.0ft)
Wavelength—Channel 2	750 nm
Light On/Off Control	Auto/Manual
Video	Description
Video Compression	Ultra 265; H.265; H.264; MJPEG
Frame Rate—Main Stream	Channel 1:4MP(2688*1520), Max 30fps Channel 2:8MP(3840*2160), Max 30fps
Frame Rate—Sub Stream	Channel 1:2MP (1920*1080), Max 30fps Channel 2:2MP (1920*1080), Max 30fps
Frame Rate-Third Stream	Channel 1:D1 (720*576), Max 30fps Channel 2:D1 (720*576), Max 30fps
Video Bit Rate	128 Kbps ~ 16 Mbps
U-code	Support
ROI	Up to 8 areas

Video Stream	Triple Streams
OSD	Up to 10 OSDs
Privacy Mask—Channel 1	24 areas, Up to 8 areas per scene
Privacy Mask—Channel 2	24 areas, up to 8 areas per scene
Image	Description
White Balance	Auto; Outdoor; Fine Tune; Sodium Lamp; Locked; Auto2
Digital Noise Reduction	2D/3D DNR
Smart IR	Support
Flip	Normal; Flip Vertical; Flip Horizontal; 180°; 90°Clockwise; 90°Anti-clockwise
HLC	Support
BLC	Support
Defog	Digital Defog
Heatwave Reduction	N/A
Intelligent	Description
Smart Intrusion Prevention—Channel 2	Support False Alarm Filtering;; Cross Line Detection; Intrusion Detection; Enter Area Detection; Leave Area Detection
Metadata Analyse—Channel 2	Support human body, , motor vehicle and non-motor vehicle image capture and attribute collection
People Counting—Channel 2	Support People Flow Counting and Crowd Density Monitoring
Events	Description
Basic Detection	Motion Detection; Tampering Alarm; Audio Detection
General Function	Watermark; IP Address Filtering; Access Policy; ARP Protection; RTSP Authentication; User Authentication; HTTP Authentication; Alarm Input; Alarm Output
Audio	Description
Audio Compression	G.711U; G.711A
Audio Bitrate	128 Kbps
Two-way Audio	Support
Suppression	Support
Sampling Rate	16KHZ
Storage	Description
Edge Storage	Micro SD, up to 512 GB
Network Storage	ANR; NAS (NFS)

Network	Description
Protocols	SSH; IGMP; RTP; RTCP; SMTP; IPv4; IPv6; ICMP; ARP; TCP; UDP; DHCP; PPPoE; RTSP; RTMP; DNS; DDNS; NTP; FTP; UPnP; HTTP; HTTPS; 802.1x; SNMP; QoS; SSL/TLS
Compatible Integration	ONVIF (Profile S, Profile G, Profile T, Profile M); API; SDK
User/Host	Up to 32 users. 3 user levels: administrator, common user and operator
Security	TLS1.3; Password Protection; Strong Password; HTTPS Encryption; Export Operation Logs; Basic and digest authentication for RTSP; Digest authentication for HTTP; TLS 1.2; WSSE and digest authentication for ONVIF
Client	EZStation; EZLive; EZView
Web Browser	Plug-in required live view: IE 10 and above, Chrome 45 and above, Firefox 52 and above, Edge 79 and above
Interface	Description
Audio I/O	2/1
Alarm I/O	3/2
Serial Port	1 channel RS485 interface
Built-in Mic	Built-in two mics
Built-in Speaker	Support
Network	10M/100M/1000M Base-TX Ethernet
Certification	Description
EMC	CE-EMC (EN 55032: 2015+A1:2020,EN 61000-3-3: 2013+A1: 2019,EN IEC 61000-3-2: 2019+A1: 2021,EN 55035: 2017+A11:2020) FCC (FCC CFR 47 part15 B, ANSI C63.4-2014)
Safety	CE LVD (EN 62368-1:2014+A11:2017) UL (UL 62368-1, 2nd Ed., Issue Date: 2014-12-01)
Environment	CE-RoHS (2011/65/EU;(EU)2015/863); WEEE (2012/19/EU); Reach (Regulation (EC) No 1907/2006)
Protection	IP66 (IEC 60529:1989+AMD1:1999+AMD2:2013)
General	Description
Power	AC24V ± 25%
Power Consumption	Max 31w
Power Interface	Two-core terminal block
Dimensions	Φ326x147x121mm(Φ 12.8'' x5.8'' x4.8'')
Weight	2.11kg

Working Environment	-30 °C ~ 60 °C (-22 °F ~ 140 °F), Humidity: ≤95% RH (non-condensing)
Storage Environment	-40 °C ~ 70 °C (-40 °F ~ 158 °F), Humidity: ≤95% RH (non-condensing)
Surge Protection	Support
Reset Button	Support
Web Client Language	22 Languages Traditional Chinese, English, Simplified Chinese, Polish, German, Russian, French, Korean, Dutch, Czech, Portuguese (Europe), Portuguese (Brazil), Japanese, Thai, Turkish, Spanish (Latin America), Spanish (Europe), Hungarian, Italian, Vietnamese, Arabic, Slovak

Dimensions



Zhejiang Uniview Technologies Co., Ltd.

No. 369, Xietong Road, Xixing Sub-district, Binjiang District, Hangzhou City, 310051, Zhejiang Province, China

Email: overseasbusiness@uniview.com; globalsupport@uniview.com

<http://www.uniview.com>

©2023-2024 Zhejiang Uniview Technologies Co., Ltd. All rights reserved.

*Product specifications and availability are subject to change without notice.

*Despite our best efforts, technical or typographical errors may exist in this document. Uniview cannot be held responsible for any such errors and reserves the right to change the contents of this document without prior notice.