



Low energy LED downlights with super slim design

GreenSpace Slim Downlight G2

GreenSpace Slim downlight is ultra-thin product for general lighting applications with limited build-in height, which is suitable for a series of lighting applications in general indoor areas. Available in a wide variety of lumen packs, cut out size, selectable CCT with less SKUs and dimming option.

Benefits

- Get rid of installation limitation
- Easy stock built up to support fast delivery task
- Strong energy saving
- Long term quality & reliability
- Super color consistency
- Wide control options

Features

- Delivering height less than 20mm (without clip) supported by edge lit structure
- 3000K/4000K selectable is enabling less SKU
- Up to 125lm/W
- 50Khrs L80B50 lifetime
- SDCM 3
- PSD & WIA options available

Application

- General indoor area
- Office
- Corridors

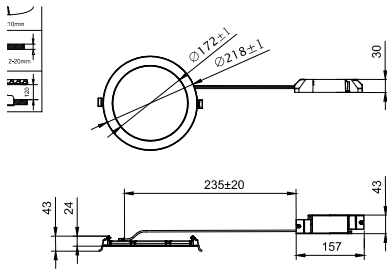
GreenSpace Slim Downlight G2

Versions

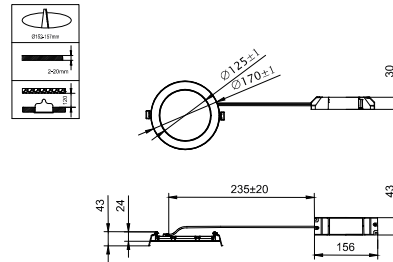


RTP-of-GreenSpace-Slim-Downlight-G2

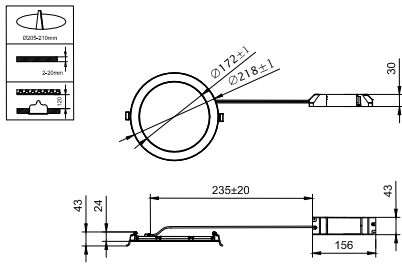
Dimensional drawing



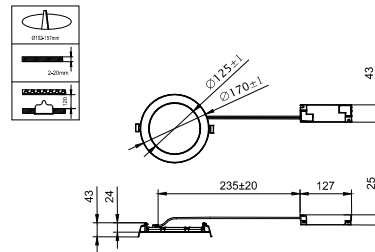
DN150X LED21S/830_840 WIA WH G2



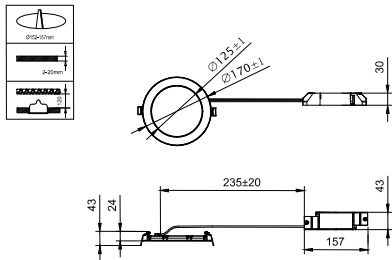
DN150B LED11S/830_840 PSD WH G2



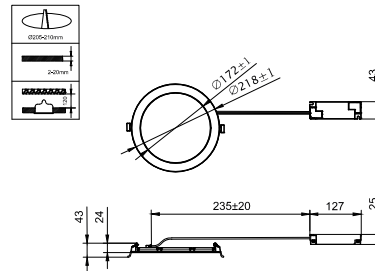
DN150B LED21S/830_840 PSD WH G2



DN150B LED11S/830_840 PSU WH G2



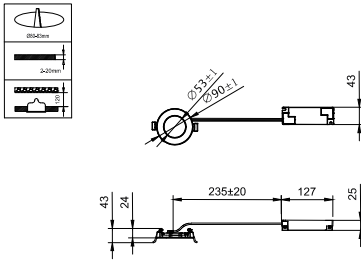
DN150X LED11S/830_840 WIA WH G2



DN150B LED21S/830_840 PSU WH G2

GreenSpace Slim Downlight G2

Dimensional drawing



DN150B LED7S/830_840 PSU WH G2

GreenSpace Slim Downlight G2

General Information

Driver included	Yes
Gear	EB
Number of gear units	1 unit

Light Technical

Beam angle of light source	90 degree(s)
Correlated Color Temperature (Nom)	3000 K
Color rendering index (CRI)	≥80
Number of light sources	1
Optic type	Beam angle 90°

Operating and Electrical

Protection class IEC	Safety class II
Input Voltage	220 to 240 V
Line Frequency	50 or 60 Hz
Suitable for random switching	No

Mechanical and Housing

Optical cover type	Microprismatic cover
Housing Color	White RAL 9003
Mech. impact protection code	IK03
Ingress protection code	IP20(IP44 front)

Approval and Application

Ambient temperature range	-20 °C to 40 °C
CE mark	Yes
ENEC mark	-
Flammability mark	For mounting on normally flammable surfaces
Glow-wire test	Temperature 650 °C, duration 30 s

Initial Performance (IEC Compliant)

Initial chromaticity	(0.43,0.40) SDCM<3; (0.38,0.38) SDCM<3
Luminous flux tolerance	-10%,+15%

Light Technical

Order Code	Full Product Name	Luminous Efficacy (rated) (Nom)	Luminous Flux
911401895287	DN150B LED7S/830_840 PSU WH G2	110 lm/W	715 lm
911401895487	DN150B LED21S/830_840 PSU WH G2	125 lm/W	2,100 lm
911401895687	DN150B LED21S/830_840 PSD WH G2	117 lm/W	2,100 lm
911401895887	DN150X LED21S/830_840 WIA WH G2	120 lm/W	2,100 lm
911401895387	DN150B LED11S/830_840 PSU WH G2	120 lm/W	1,150 lm
911401895587	DN150B LED11S/830_840 PSD WH G2	115 lm/W	1,150 lm
911401895787	DN150X LED11S/830_840 WIA WH G2	115 lm/W	1,150 lm

Operating and Electrical

Order Code	Full Product Name	Power Consumption
911401895287	DN150B LED7S/830_840 PSU WH G2	6.5 W
911401895487	DN150B LED21S/830_840 PSU WH G2	16.5 W
911401895687	DN150B LED21S/830_840 PSD WH G2	18 W
911401895887	DN150X LED21S/830_840 WIA WH G2	17.5 W

Order Code	Full Product Name	Power Consumption
911401895387	DN150B LED11S/830_840 PSU WH G2	9.5 W
911401895587	DN150B LED11S/830_840 PSD WH G2	10 W
911401895787	DN150X LED11S/830_840 WIA WH G2	10 W

Controls and Dimming

GreenSpace Slim Downlight G2

Order Code	Full Product Name	Dimmable	Maximum dim level
911401895287	DN150B LED7S/830_840 PSU WH G2	-	Not applicable
911401895487	DN150B LED21S/830_840 PSU WH G2	-	Not applicable
911401895687	DN150B LED21S/830_840 PSD WH G2	DALI	1%

Order Code	Full Product Name	Dimmable	Maximum dim level
911401895887	DN150X LED21S/830_840 WIA WH G2	Wireless Dim	1%
911401895387	DN150B LED11S/830_840 PSU WH G2	-	Not applicable
911401895587	DN150B LED11S/830_840 PSD WH G2	DALI	1%
911401895787	DN150X LED11S/830_840 WIA WH G2	Wireless Dim	1%

