

THE BRAND BOOK

CAESARSTONE

A STORY OF INNOVATION

Founded in 1987, Caesarstone was the pioneer of the natural quartz surfaces market. Its dominant position has been achieved through continuous investment and innovation, extensive research and development, highly trained personnel and an advanced market infrastructure. For more than a decade, Caesarstone has set new standards in innovation and craftsmanship and continues to set the trends in the industry.

Caesarstone Ltd. has its head office in Sdot Yam, Israel and now manufactures quartz surfaces at three facilities in two continents - two locations in Israel and one plant in Richmond Hill, Georgia.

MADE IN ISRAEL





BRING YOUR DESIGN DREAMS TO THE SURFACE WITH **CAESARSTONE**

Your kitchen surface is the focal point of your home. You trust that it is of the highest quality craftsmanship and made with only the best materials available. Caesarstone consists of up to 93% quartz - one of nature's strongest minerals - and combines beauty with outstanding performance, allowing you to bring your design imagination to life.





VARIOUS SURFACES

Caesarstone has expanded our line of finish options to include the rich layered looks of Honed, Concrete and Rough along with our sleek standard Polished finish. These matt, textured surface designs are of the same high-quality quartz as the Polished finish yet present the option of a sensorial dimension with low sheen to satisfy different design styles.



HAILO

INNOVATIONS ARE A MATTER OF PRINCIPLE

Hailo has been dedicated to making work easier and safer for trade and industry professionals and DIY enthusiasts ever since it was founded in 1947. As a leading manufacturer of ladder systems, steps and waste bins, we offer our customers a wide range of innovative products that set standards. Hailo continually provides new impetus in the market with its forward-looking product innovations. Today, Hailo products are sold in more than 60 countries across the world.

MADE IN GERMANY



INNOVATIVE PRODUCTS

As a quality brand, we are a strong partner for the retail industry. We actively support our retailers with innovative advertising and sales promotions. Their success is our goal!



SUPERIOR PERFORMANCE HAILO ON TOP SYSTEM

The practical, extra Bio-Pullout Extension Lid for 60 cm recycling-systems, including 2 containers and 2 lids.

The “On-Top” Bio-Pullout may be retrofitted above various side-mounted or drawer-mounted waste-recycling systems (in addition to, or as replacement for, an existing system-lid). Furthermore, the covered containers may be procured individually, as they may be used as single, extra accessories, for various applications, too.



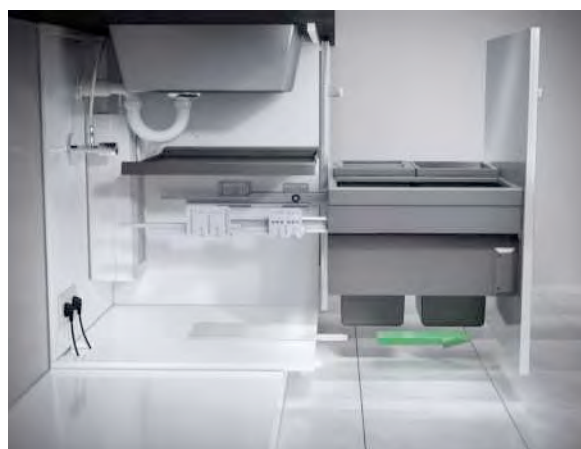
HAILO

LIBERO 2.0

SMART TECHNOLOGY

One opener system for all types of pull-outs, and for side-mounted, self-containing systems.

The modified and improved, further development of the unique Hailo HFO - Libero, the new Hailo Libero 2.0, electronic sensor opener, the new Hailo Libero 2.0, electronic sensor opener, is also ingeniously designed.



HAILO LAUNDRY AREA

THE TIDY UTILITY ROOM WITH MODULES FROM HAILO

Different rooms that merge into one another and open space living areas are a current home trend – not only due to but above all because of the phenomenon of increasingly smaller living spaces, especially in urban areas. This calls for new concepts in order to utilise the available space as efficiently as possible, especially apartments and houses without basements or lofts call for special solutions to create space for doing and drying the laundry, such as a utility room, for example. However, utility rooms are often not particularly carefully designed and usually only include the most basic fittings, for example the washing machine and dryer connections. Plus, in contrast to kitchens, ergonomic design has as yet rarely been taken into account.

KESSEBÖHMER

CLEVER STORAGE

Sometimes the simplest things are the most extraordinary. Just as nature exhibits amazing efficiency among its elements, Kesseböhmer strives to achieve the perfect balance between form and function. After 50 years, you can rest assured, they've figured it out. With clever storage that considers convenience for today's multi-use kitchens as much as it considers capacity.

From the elegance and functionality of LeMans to the space-saving style of Tandem, Kesseböhmer turns ordinary cabinets into extraordinary kitchens.

MADE IN GERMANY







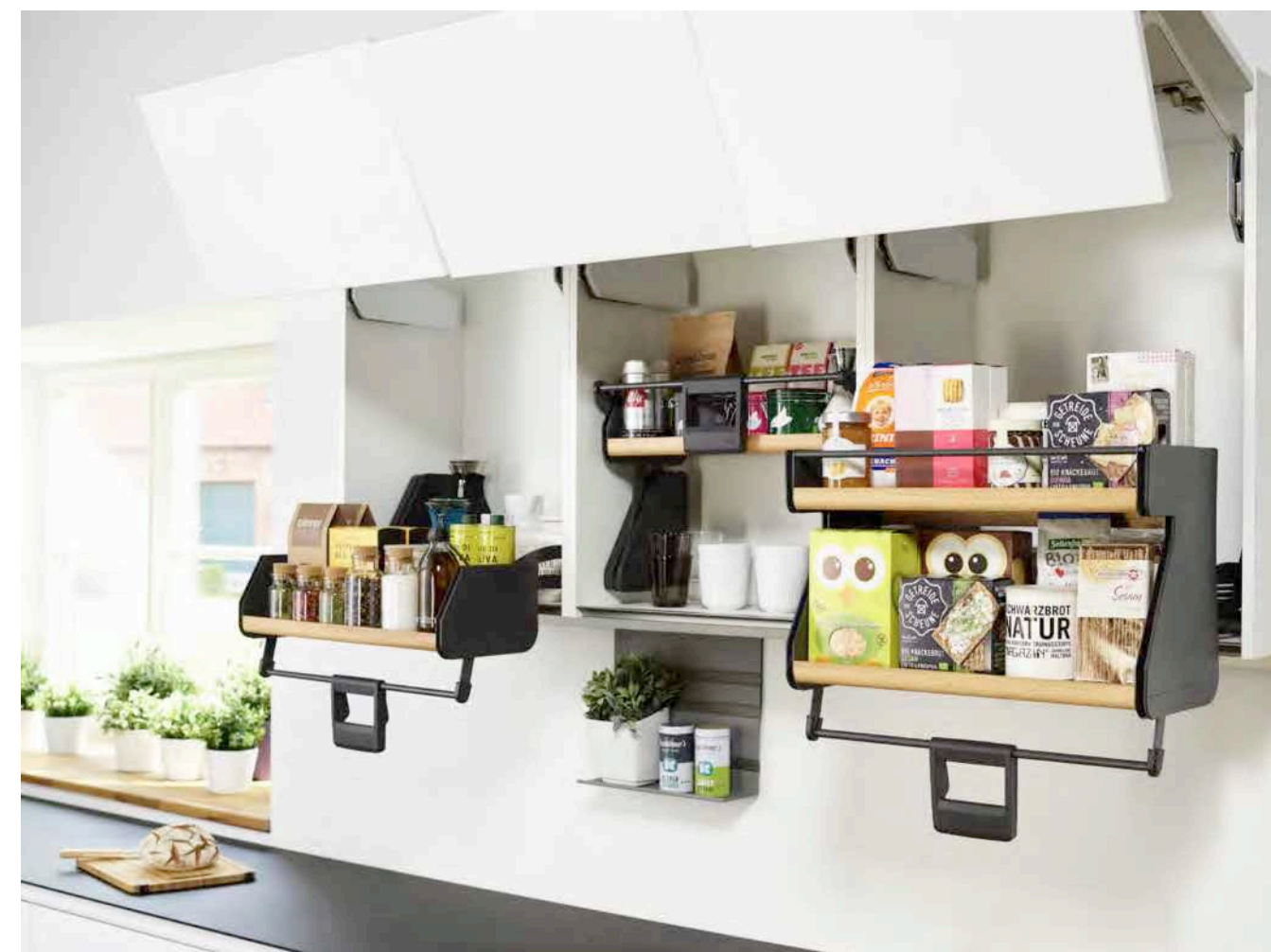
YOU JUST HAVE
TO **FIND IT**, NOT
LOOK FOR IT.

AN 85% BETTER OVERVIEW

With a double front surface, you can see everything at a glance and access it all very easily.



1
WITH A SWING
AND USING JUST
ONE HAND



THERE IS NO COMPARISON!

85%

BETTER OVERVIEW

The cupboard contents are divided into two halves automatically when you open the door.





LIEBHERR

OPTIMAL STORAGE

Properly stored, wine continues to develop its natural flavour in the bottle and, on reaching peak maturity, the wine will be deeper and more complex. For a good character wine, consistent storage conditions are prerequisite for long-term storage. Liebherr's wine storage cabinets create ideal conditions for in-bottle ageing, providing a climate similar to a wine cellar. A constant temperature is maintained throughout the cabinet interior, making them ideal for long-term storage and for the ageing of fine wines.

STORE YOUR FOOD UNDER BEST CONDITIONS.

LIEBHERR

143



HAFELE

For more than 60 years Liebherr has specialised in the manufacture of high quality, innovative fridges and freezers. From the initial stages of product design, and continuing through development, production and marketing, Liebherr focuses on manufacturing innovative products of the highest quality with timeless and elegant design. We consistently implement new ideas and improved technology to ensure optimum food storage and quality.

This 178 bottles three zone wine cabinet is ideal to use for either wine at serving temperature or a combination of serving and aging. Each zone has an independently adjustable temperature range of +5°C to +20°C to cover all possibilities. For example you could use the top zone and the central zone for Red and White wine at serving temperature and the bottom (larger) zone for wine which requires aging at 12°C. Alternatively you could use all 3 zones for Red, White & Champagne all ready to serving temperatures. The choice is yours.



THE INNOVATIVE FOOD STORAGE CENTRE: CBNES 6256

The food storage centre CBNeS 6256 with its elegant Frenchdoor concept is a focal point in any kitchen, open or closed. The interior presents a host of innovative ideas. Take the LED interior light and the automatic IceMaker with fixed water connection in the freezer compartment, for example. Or the two BioFresh drawers, which keep food fresh for up to three times longer. Accurate and independent temperature control of the fridge and freezer compartments is ensured by DuoCooling: two separately adjustable cooling circuits. There is no air exchange between the refrigerator and freezer compartment, so that odours cannot be transferred and the stored food is prevented from drying out.

FIVE TEMPERATURE ZONES IN ONE APPLIANCE: SBSSES 7165

The SBSes 7165 Side-by-Side combined appliance with five different temperature zones boast an array of innovative solutions. The multi-temperature wine compartment has two independently controlled zones for storing wine at the exact temperature desired, ranging from +5°C to +20°C. The NoFrost freezer compartment with automatic IceMaker offers professional long-term freshness. The spacious refrigerator section provides everyday freshness. Vegetables, fruits, fish, dairy product and meat stay fresh significantly longer in the BioFresh-Plus compartment. With the BioFresh-Plus technology, the temperature in the upper BioFresh drawer can be reduced to -2°C for the perfect storage of fish or set to +6°C for tropical fruits. Therefore refrigeration, BioFresh, freezing and the two temperature zones for wine mean you have the optimal storage temperature for every kind of food and drink.



INTEGRATED SIDE-BY-SIDE FOOD STORAGE CENTRES



FRIDGE-FREEZERS

AN OVERVIEW OF OUR FRIDGE-FREEZERS

With a wide range of built-in appliances to choose from, Liebherr can offer the ideal solution for whatever your needs and requirements. If you're looking for a new fridge-freezer, you can choose between innovations such as BioFresh and BioCool or NoFrost and SmartFrost. Once you have narrowed down all the basic features you want, you can then choose an appliance that fits your aperture niche size and with the configuration that you desire.



INTEGRATED UNDER-WORKTOP APPLIANCES

Being able to integrate an under-worktop refrigeration appliance behind a unit door maintains a visually uniform kitchen. A door-on-door attachment connects the appliance and unit doors. As air intake and ventilation take place at the appliance plinth, no ventilation slots need to be cut in the worktop. The Vario plinth can be adapted to the height and depth of the kitchen units. With door-on-door installation, the kitchen unit door and appliance door are attached by directly attaching the unit door to the appliance door.



Liebherr's ECBN 5066 refrigerators feature all the extras in a convenient size. Designed with two separate freezer drawers, the range incorporates all the premium features including LED light columns, MagicEye touch electronic controls, SuperCool and SuperFrost functions as well as an internal IceMaker.





VINIDOR RANGE

The Vinidor range offers maximum flexibility with two separately controlled temperature zones. The temperature of there can be set independently between +5°C to +20°C. This means that red and white wines can be stored at their ideal serving temperatures in the same cabinets. The cabinets not only provide the ideal climate conditions for long-term storage of wine, but differently sized zones and fully adjustable temperature controls, they are suitable for every wine collection.

INTEGRATED WINE CABINETS

A good wine can only develop into a truly fine wine, and retain its quality long-term, under perfect conditions. Liebherr's wine storage cabinets and multi-temperature wine cabinets are the perfect answer. Using the most advanced climate technology they create the perfect conditions needed for wines to quietly mature and develop their flavour to the full. Fitted with cutting edge electronics, expedient compressors and many specially designed features (such as an activated charcoal filter and insulated, UV-resistant glass doors), these appliances are tailor-made for wine storage.



Liebherr single temperature mini wine fridge, glass door, stainless steel door frame, designed for full integration, with quiet operation. Unique size and dimensions, ideal to be positioned at eye level, offering a convenient 18 bottles of wine at perfect temperature.



AXOR

STYLISTIC. DIVERSITY. PERFECTION.

AXOR embodies luxury in the bathroom and kitchen. Avant-garde, one-of-a-kind products and collections are created to the highest aesthetic and technological standards. They all live up to the aspiration "Form Follows Perfection". The development process continues until nothing more can be added or removed. For more than 20 years now, trendsetting designer products - including major bathroom design classics - have been created in collaboration with internationally renowned architects and designers.

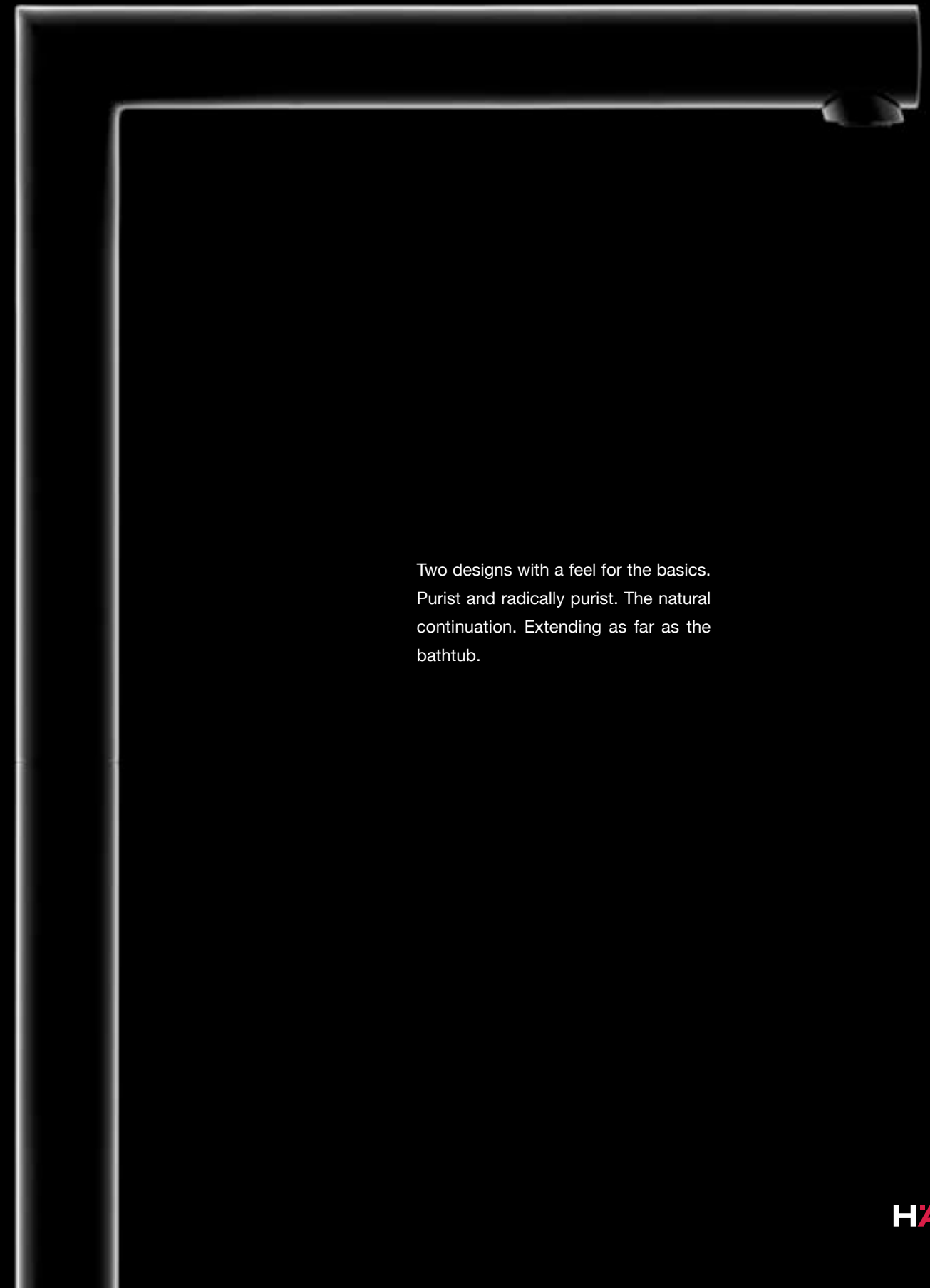
CREATE A WORLD OF LUXURY FOR KITCHEN AND BATH.

AXOR





Purism in perfection. Including shower design. The pipe – another tribute to the original form of transporting water.



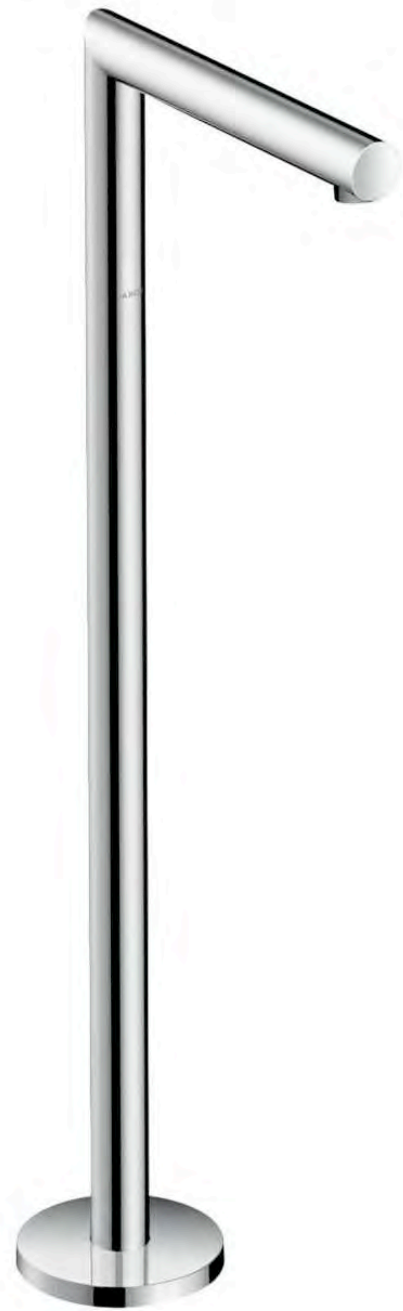
Two designs with a feel for the basics. Purist and radically purist. The natural continuation. Extending as far as the bathtub.

PURITY & PERFECTION.

Simplicity of shapes. The design aesthetics speak for themselves. AXOR Uno perfects purism with pipes, the original form of water transport. Simple design. Perfectly made. Subtly excessive, based on the Golden Ratio. The ascetic form displays a special radiance. At the sink, in the shower, or on the tub. Radically functional. Radically purist. Perfection.

AXOR UNO. THE CLASSIC MINIMALIST

PURISM UNMATCHED ON THE BATH TUB



Various designs for the bathtub. Gently bent or radically angled. Ergonomic perfection. From the handle to the hand shower. The freestanding tub filler. Minimalism in its purest form.





The elevation of purism. The floor-standing basin mixer – sculptured to perfection. Refined with the exclusive Polished Brass surface: elevation one step further.



DURAVIT

WELLNESS IN YOUR OWN BATHROOM

It all began in Hornberg, Germany in 1817 when Georg Friedrich Horn built an earthenware factory initially focused solely on the manufacture of crockery. In 1956, production evolved from earthenware to porcelain, extending the product range to include sanitary ceramics. This provided a platform for future success and also introduced the sanitary world to a new name: Duravit. Today, Duravit AG operates at an international level and boasts 10 production plants with a workforce of more than 5,000 employees worldwide.

MADE IN GERMANY

DURAVIT

163



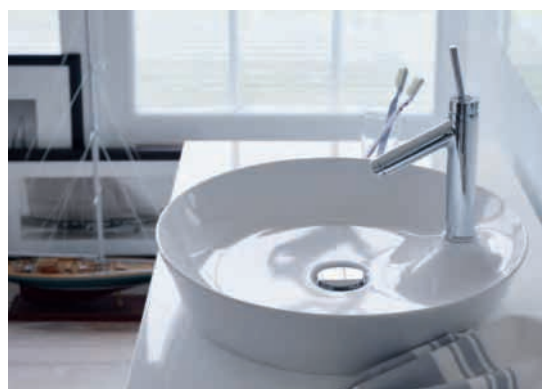
HÄFELE



The spirit of Cape Cod

Cape Cod, located in New England off the coast of the US, features an unforgettable flair. The region, known for its beaches stretching for miles, crystal clear water and untamed nature, is the inspiration for Cape Cod, the new bathroom series by Philippe Starck and Duravit.

Cape Cod eliminates all barriers between the in- and outdoors, making nature a permanent component of the bathroom, with organic forms and authentic materials such as solid real wood and warm ceramics. With Cape Cod, Starck and Duravit have reinvented the bathroom as a place of rejuvenation for the mind, body and soul.



ORIGINALITY OF DESIGN WITH TIMELESS MODERNITY

Cape Cod combines originality of design with timeless modernity by offering a sleek, thin ceramic washbowl rim, an impressive mixture of furniture materials and an organically shaped bathtub.

Attractive in its high grade porcelain finish, it features elegant, fine edges that measure only 1/4" in thickness. Made possible by the innovative DuraCeram® material, its result provides outstanding elegance without compromising quality, robustness or ease of care.





Light&Mirror

With the new mirror program, Duravit shows versatile design solutions which add value to the bathroom in private and commercial buildings while also providing optimal and beautiful illumination. Choose from two different variants to realize your individual ideas always aiming for the highest requirements in terms of design, functionality and comfort. They can be perfectly combined with all bathroom series thanks to its reduced and formal language.



AMBIENT LIGHT

The mirror with ambient light provides agreeable indirect light from all four sides. The wallwash effect gives the room an atmospheric illumination. Since no direct light falls on the person standing in front of the mirror, this variant requires additional illumination (e.g. downlights). The optional mirror heating ensures that the surface does not mist over.

HANSGROHE

PASSION FOR WATER

Want to create comfort zones in your home that you can enjoy with all your senses? Hansgrohe, one of the leading shower and faucet brands, helps you transform your bathroom and kitchen into havens of well being; for an exhilarating start to the day and a relaxing end to it. Because we are in love with water. Because we enjoy pampering people like you around the world with a broad range of beautiful products. And because we consistently strive to be better.

MADE IN GERMANY

hansgrohe

173

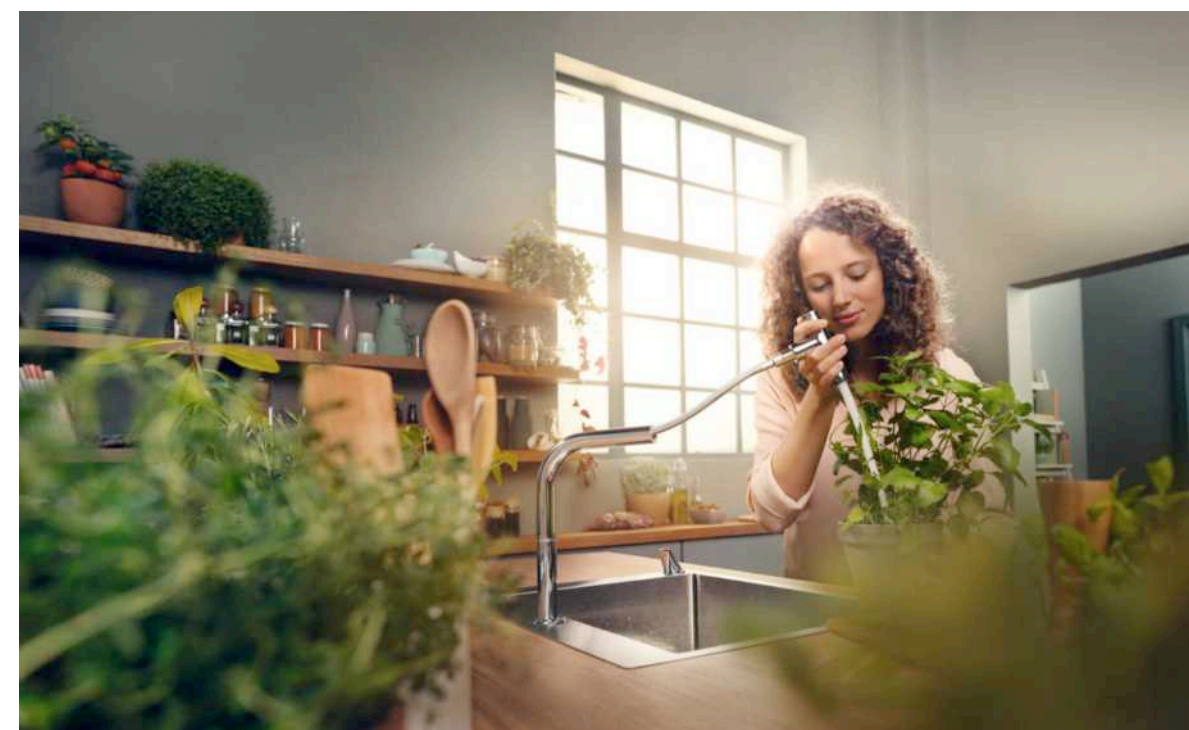


H AFELE

SWITCH OVER TO MAXIMUM COMFORT

With RainSelect, showering pleasure can now be controlled with complete ease and just one product. Its generously-sized, intuitively-operated buttons blend harmoniously into the horizontal design that skilfully echoes the linear forms of modern architecture. The RainSelect shower control owes its minimalism to the slender silhouette which, with its understood installation height, integrates perfectly in the wall, while the use of metal and glass provide the optimum balance in the shower area.





AS INDIVIDUAL AS YOUR TASTE: OUR KITCHEN MIXERS

The hansgrohe mixer lines cater to every style and taste, from modern to classic, from geometric to rounded. Our wide range offers enough space for any individual attitude to life to be created in the kitchen.

EVERYTHING POINTS TOWARDS CHARACTER HERE

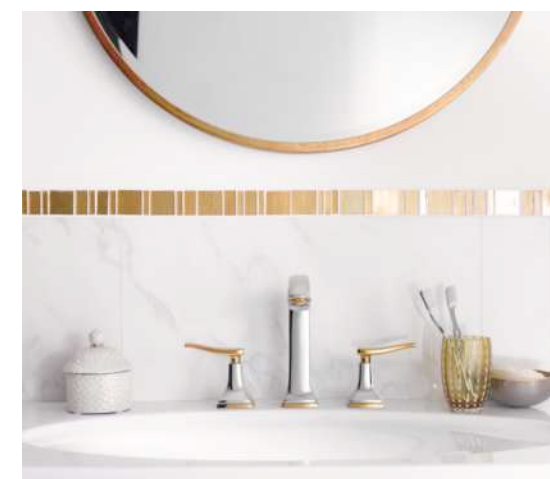


With its precise yet appealing design, the Metropolis mixer line is the foundation of high-quality bathroom design. Its stylish silhouette that utilises elegant geometric shapes creates an expressive appearance in any bathroom, at the washbasin, in the shower and in the bath.

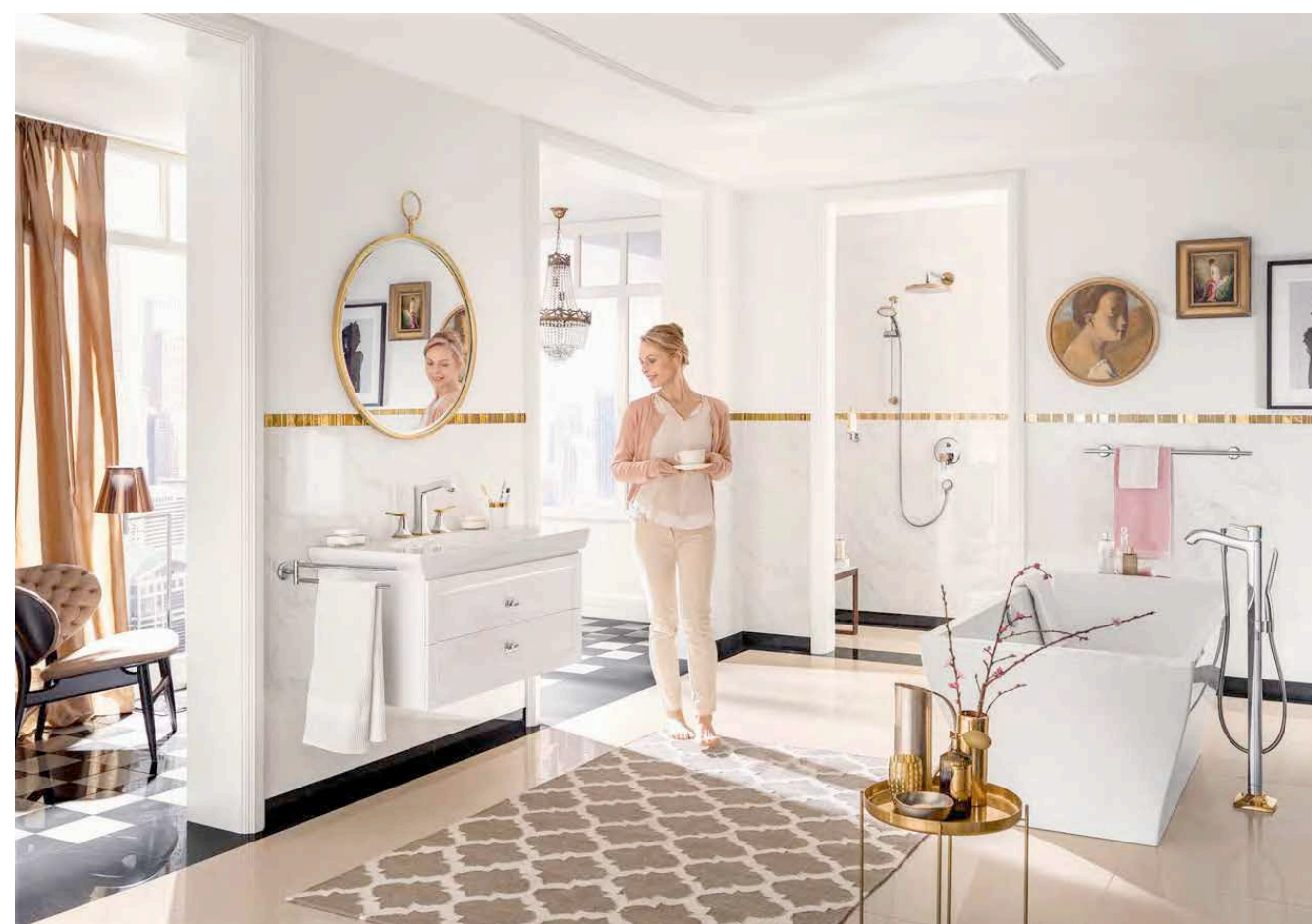




THE ARTISTIC PRESENTATION OF WATER



The clean, classically inspired design and distinctive curves of these fittings ensure that Metropole Classic makes the perfect statement in any stylish interior. Just like a carefully chosen accessory, these feelings enhance washbasins, showers and bathtubs without being too overpowering.



PBA

BARRIER FREE

Pba S.p.A. was founded in 1976 and is a family-owned company. Pba is the brand of architectural hardware made of stainless steel type AISI 316L, the hardest, most resistant and elastic of the stainless steels. We are the Italian company for door handles, pull bars, lockable pulls, and glass door patches, installed in some of the most prestigious projects around the world. The complete production cycle is concentrated in our 135,000 square-foot plant near Venice, in the north-eastern district of Italy known worldwide for its manufacturing excellence. This industrial structure affords complete control of our raw materials, production technology and manpower qualifications. Our production enables us to adjust to clients' needs and to provide them prompt delivery, always guaranteeing the highest product quality.

MADE IN ITALY



pba

183

HAFELE

MATERIALS

THERMOPLASTIC RESIN (POLYAMIDE 6):

- High mechanical resistance to shocks
- Highly resistant to usury
- Antistatic features and good insulation to electrical shocks
- Good resistance to chemical exposure (hydrocarbons, oils, greases, solvents, detergents and sanitizers)
- Highly thermal insulation
- Self-extinguishing material, rated UL 94V-2, not spreading toxic gases
- Complying the European LAW 2011/65/EU and it doesn't include lead, Mercure, Chrome Cadmio

ALUMINIUM:

- Good mechanical resistance
- Lightweight
- Highly resistant to the corrosion



STRUCTURAL COMPONENTS



STRUCTURAL COMPONENTS DETAILS



PRODUCTS

- FIXED SAFETY SUPPORTS
- MOVEBLE SAFETY SUPPORTS
- SHOWER SEATS
- ACCESSORIES



FIXED SAFETY SUPPORT



MATERIALS

DIE-CASTING AND EXTRUDED ALUMINUM



FINISHING

white ral 9010

grey ral 9006

*Specific colors on demand available
(by a minimum order quantity)*



EUROPEAN DIRECTIVE 42/93 FOR MEDICAL DEVICES

ALL THE PRODUCTS OF PROGRAMMA 400 NY HAVE THE
PRODUCT CERTIFICATION AND THEY

COMPLY THE FOLLOWING EUROPEAN LAW:

- DIRECTIVE 93/42/CEE FOR MEDICAL DEVICES
- DIRECTIVE BT 73/23/CEE (MODIFIED PAR LE DIRECTIVE
93/68/CEE) POUR BAS TENSION.

INDEX
BRAND BOOK



INDEX
BRAND BOOK



PROJECT REFERENCE

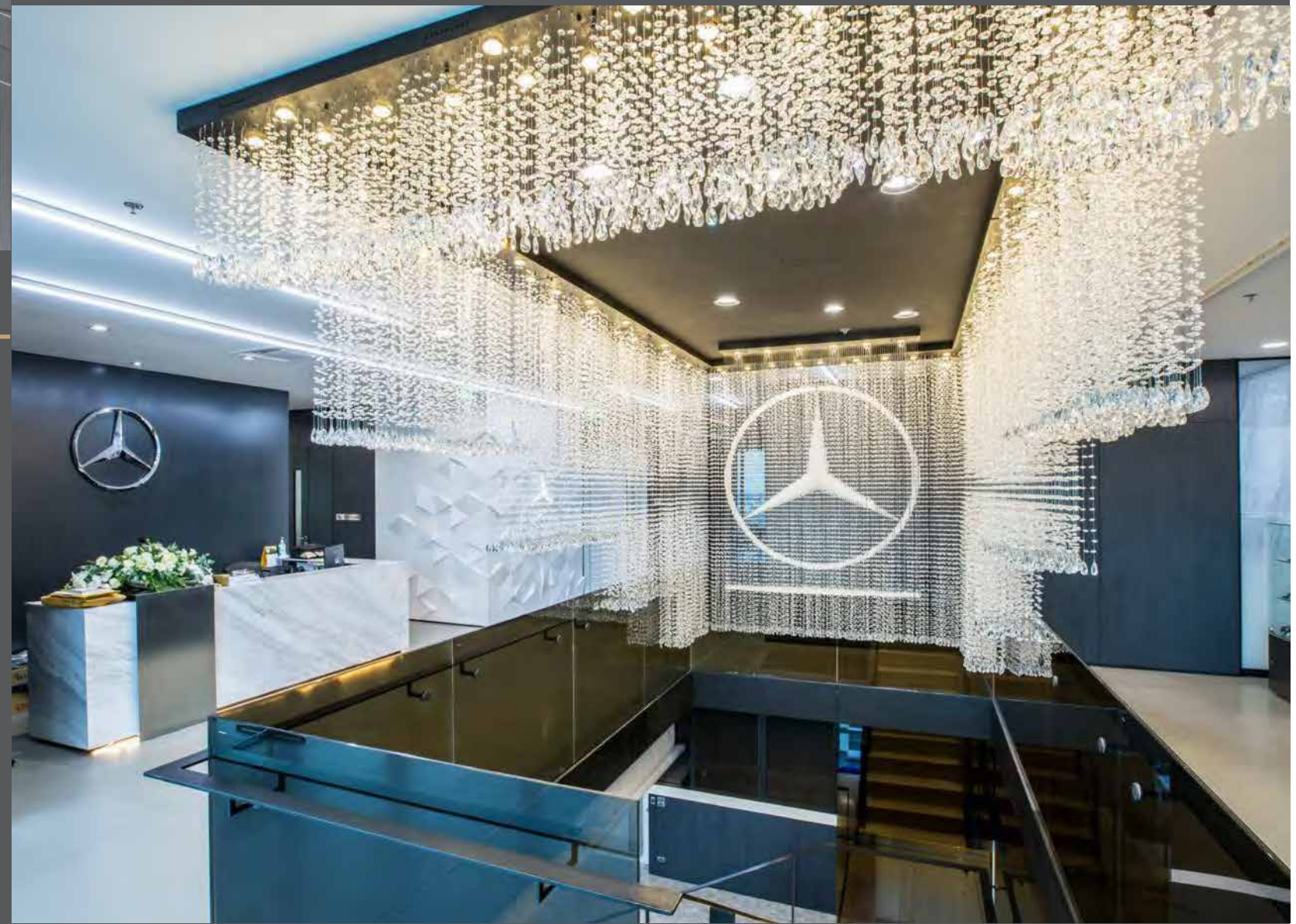


SINDHORN
RESIDENCE
BANGKOK

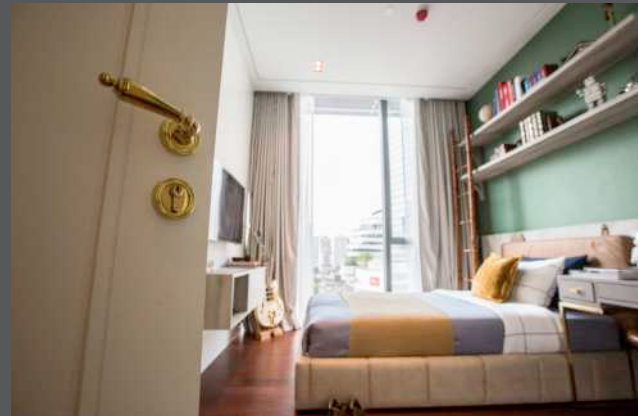




NIKANTI GOLF CLUB



MARQUE



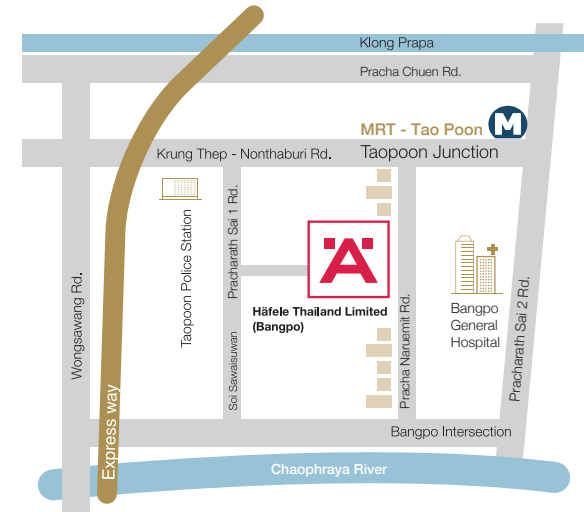
JAGUAR SHOWROOM



Häfele Design Studios and Head Office Bangkok
Häfele Design Studio และสำนักงานใหญ่ กรุงเทพฯ

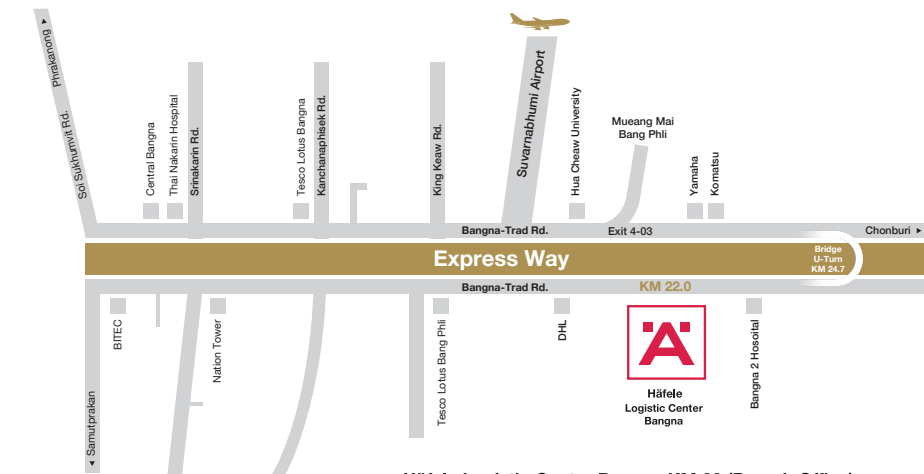


Häfele Design Studio Bangkok (Head Office)
57 Soi Sukhumvit 64, Sukhumvit Rd.,
Phrakanong Tai, Phrakanong, Bangkok 10260
Telephone: (02) 741-7171, (02) 768-7171 Fax: (02) 741-7272
57 ซอยสุขุมวิท 64 ถนนสุขุมวิท
พระโขนงใต้ พระโขนง กรุงเทพฯ 10260
โทรศัพท์: (02) 741-7171, (02) 768-7171 โทรสาร: (02)-741-7272



Häfele Design Studio Bangpo (Branch Office)
405,385/10 Soi Pracha Naruemit Pracharath Sai 1 Rd.,
Bangsue, Bangsue, Bangkok 10800
Telephone: (02) 912-8521 Fax: (02) 912-8520
405,385/10 ซอยประชานฤมิตร
ถนนประชานฤมิตร สาย 1
บางซื่อ บางซื่อ กรุงเทพฯ 10800
โทรศัพท์: (02) 912-8521 โทรสาร: (02) 912-8520

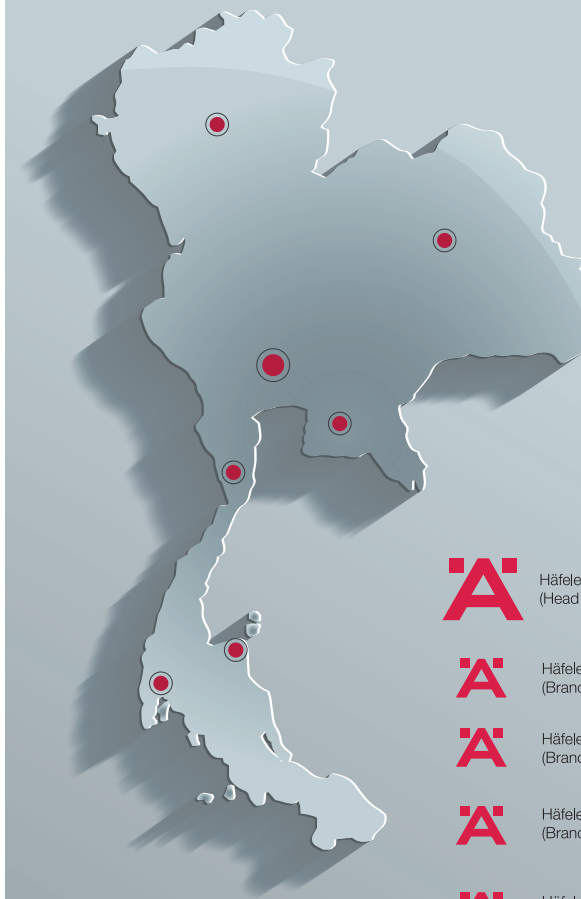
Dealer Distribution Center
สำหรับให้ข้อมูลและบริการ ไม่มีจำหน่ายสินค้าโดยตรง
ขายผ่านผู้จัดจำหน่ายเท่านั้น










Häfele Logistic Center Bangna KM 22 (Branch Office)
44/3 Moo 1 Srisa Chorakae Yai Bangsaothong, Samutprakan 10540
Telephone: (02) 741-7171, (02) 768-7171

44/3 หมู่ 1 ตำบลศรีระจรรย์ใหญ่ อำเภอบางเสาธง จังหวัดสมุทรปราการ 10540
โทรศัพท์: (02) 741-7171, (02) 768-7171

Welcome to our Design Studios in Thailand
โซวีรูมเฮเฟิล ประเทศไทย



-  Häfele Design Studio Bangkok (Head Office)
-  Häfele Design Studio Chiang Mai (Branch Office)
-  Häfele Logistic Center Khon Kaen (Branch Office)
-  Häfele Design Studio Pattaya (Branch Office)
-  Häfele Design Studio Hua Hin (Branch Office)
-  Häfele Logistic Center Suratthani (Branch Office)
-  Häfele Design Studio Phuket (Branch Office)



*New products,
latest information
and regular promotions!*
www.hafele.co.th
www.hafelethailand.com



*Contact our sales department
for detailed information!*
info@hafele.co.th

Häfele Design Studio Bangkok (Branch Office)
57 Soi Sukhumvit 64, Sukhumvit Rd.,
Phrakanong Tai, Phrakanong,
Bangkok 10260
Telephone: (02) 741-7171, (02) 768-7171, Fax: (02) 741-7272

57 ซอยสุขุมวิท 64 ถนนสุขุมวิท
พระโขนงใต้ พระโขนง กรุงเทพฯ 10260
โทรศัพท์: (02) 741-7171, (02) 768-7171 โทรสาร: (02)-741-7272

Häfele Design Studio Pattaya (Branch Office)
Opposite Outlet Mall, 140/89 Moo 11, Nongprue,
Banglamung, Chonburi 20150
Telephone: (038) 332-485-8 Fax: (038) 332-489

ตรงข้ามเอาท์เล็ตมอลล์ 140/89 ม.11 ต.หนองปรือ
อ.บางละมุง จ.ชลบุรี 20150
โทรศัพท์: (038) 332-485-8 โทรสาร: (038) 332-489

Häfele Design Studio Hua Hin (Branch Office)
15/84 Soi Hua Hin 29, Petchkasem Rd., Hua Hin,
Hua Hin, Prachuapkhirkhan 77110
Telephone: (032) 547-704 Fax: (032) 547-705

15/84 ซ.หัวหิน 29 ถ.เพชรเกษม ต.หัวหิน
อ.หัวหิน จ.ประจวบคีรีขันธ์ 77110
โทรศัพท์: (032) 547-704 โทรสาร: (032) 547-705

Häfele Design Center Phuket (Branch Office)
Opposite Big C, 81 Moo 5, Chalermprakiet Ror-9 Road,
Vichit, Muang, Phuket 83000
Telephone: (076) 304-460 Fax: (076) 304-468

ตรงข้ามบิ๊กซี, 81 ม.5 ถ.เฉลิมพระเกียรติ ร.9 ต.วิชิต
อ.เมือง จ.ภูเก็ต 83000
โทรศัพท์: (076) 304-460 โทรสาร: (076) 304-468

Häfele Design Studio Chiang Mai (Branch Office)
498 Chiang Mai-Lampang Road, Thasala,
Mueang Chiang Mai, Chiang Mai 50000
Telephone: (053) 240-300-01 Fax: (053) 240-304

498 ถ.เชียงใหม่-ลำปาง ต.ท่าศาลา อ.เมืองเชียงใหม่
จ.เชียงใหม่ 50000
โทรศัพท์: (053) 240-300-01 โทรสาร: (053) 240-304

Häfele Logistic Center Suratthani (DC)
83/33 Moo 3 Laengmuang Road
Makhantia, Mueang, Suratthani 84000
Telephone: (077) 489-471-3 Fax: (077) 489-474

83/33 หมู่ 3 ถ.เลียงเมือง
ต.มะขามเตี้ย อ.เมือง จ.สุราษฎร์ธานี 84000
โทรศัพท์: (077) 489-471-3 โทรสาร: (077) 489-474

Häfele Logistic Center Khon Kaen (DC)
189 Moo 12, Phra Lap, Muang,
Khon Kaen 40000
Telephone: (043) 915-082 Fax: (043) 915-083

189 ถ.เลียงเมือง หมู่ 12 ต.พระลับ อ.เมือง
ขอนแก่น 40000
โทรศัพท์: (043) 915-082 โทรสาร: (043) 915-083



25TH HÄFELE
THAILAND
ANNIVERSARY
GERMAN INNOVATION
-SINCE 1923-

Imprint

This brochure is only intended for use by the recipient.
It remains in all respects the property of Häfele.

Reproductions of this catalogue in whole or in part, the copying or imitation
of any illustrations and the imitation of the layout are strictly prohibited.

The technical descriptions and dimensions in this catalogue, also those with
the photographs and drawings, are not binding. We reserve the right
to make design improvements. All dimensions in mm,
unless stated otherwise.

We bear no liability for any misprints or other errors that might occur
in the production of the catalogue.

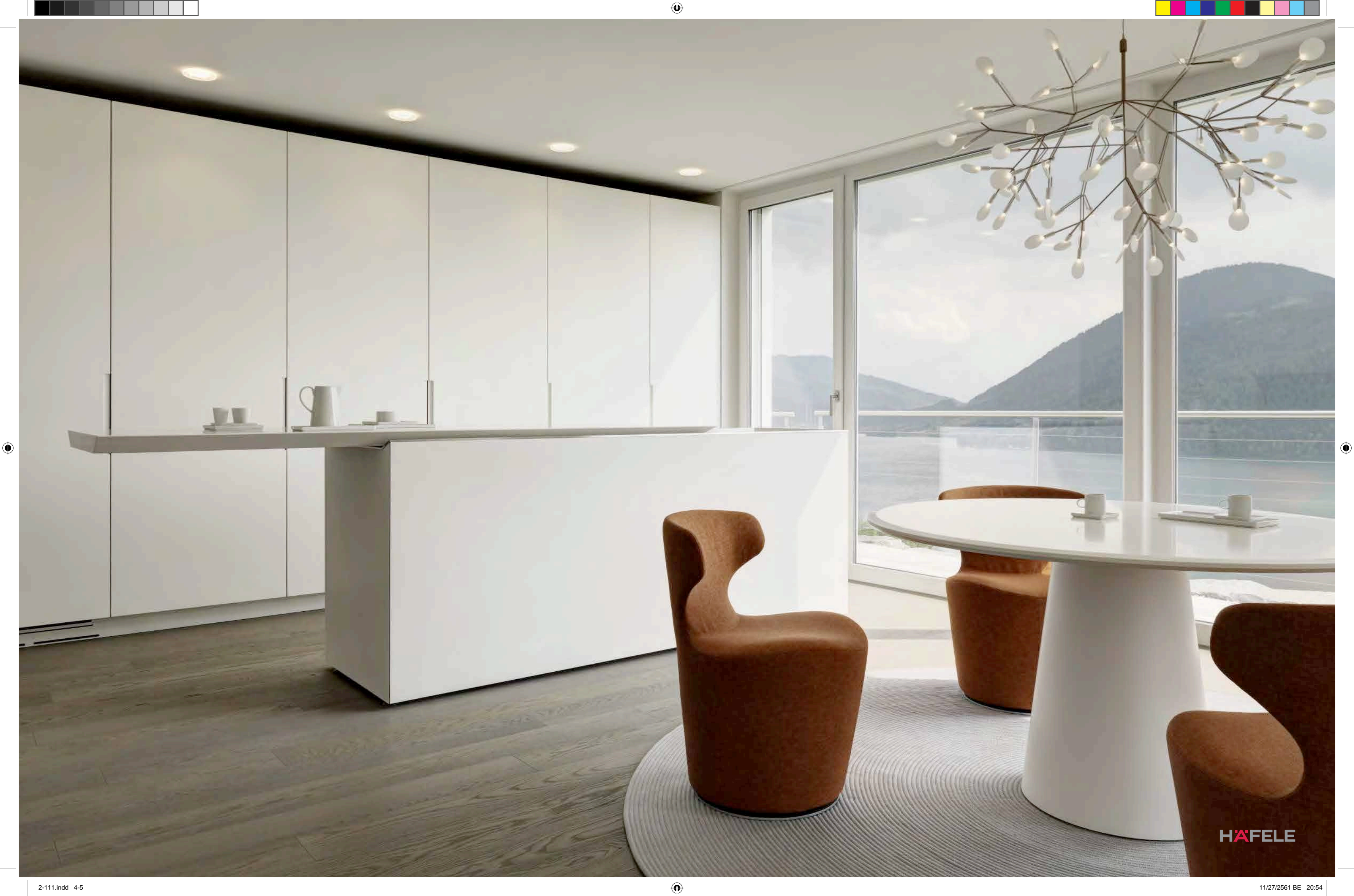
All deliveries are made pursuant to Häfele's sales conditions.

November 2018

© Copyright by Häfele (Thailand) Limited

All rights reserved

Printed in Thailand



HÄFELE

**GERMAN
INNOVATION**

— SINCE 1923 —

MORE THAN PRODUCTS, IT IS A WORLD-CLASS BRAND.

CONTENTS

BRAND BOOK

12 ENRICO CASSINA	102 BLANCO
22 FSB	112 CAESARSTONE
32 GEZE	122 HAILO
42 HAWA	132 KESSEBÖHMER
52 HÖRMANN	142 LIEBHERR
62 JATEC	152 AXOR
72 KABA	162 DURAVIT
82 KAWAJUN	172 HANSGROHE
92 SIMONSWERK	182 PBA

HÄFELE THAILAND

HÄFELE





ENRICO CASSINA

PURITY OF DESIGN

Refinement and taste can be a matter of detail, just like Enrico Cassina's handles. Each piece is a conceptual masterpiece, the result of precise design knowledge and technical expertise in manufacture and finish.

Over 150 years of experience bring a touch of glamour and charm to your interiors.

Enrico Cassina. Purity of design and exceptional quality. A mark of distinction in furnishing projects.

MANUFACTURED BY OFFICINE MECCANICHE PORRO

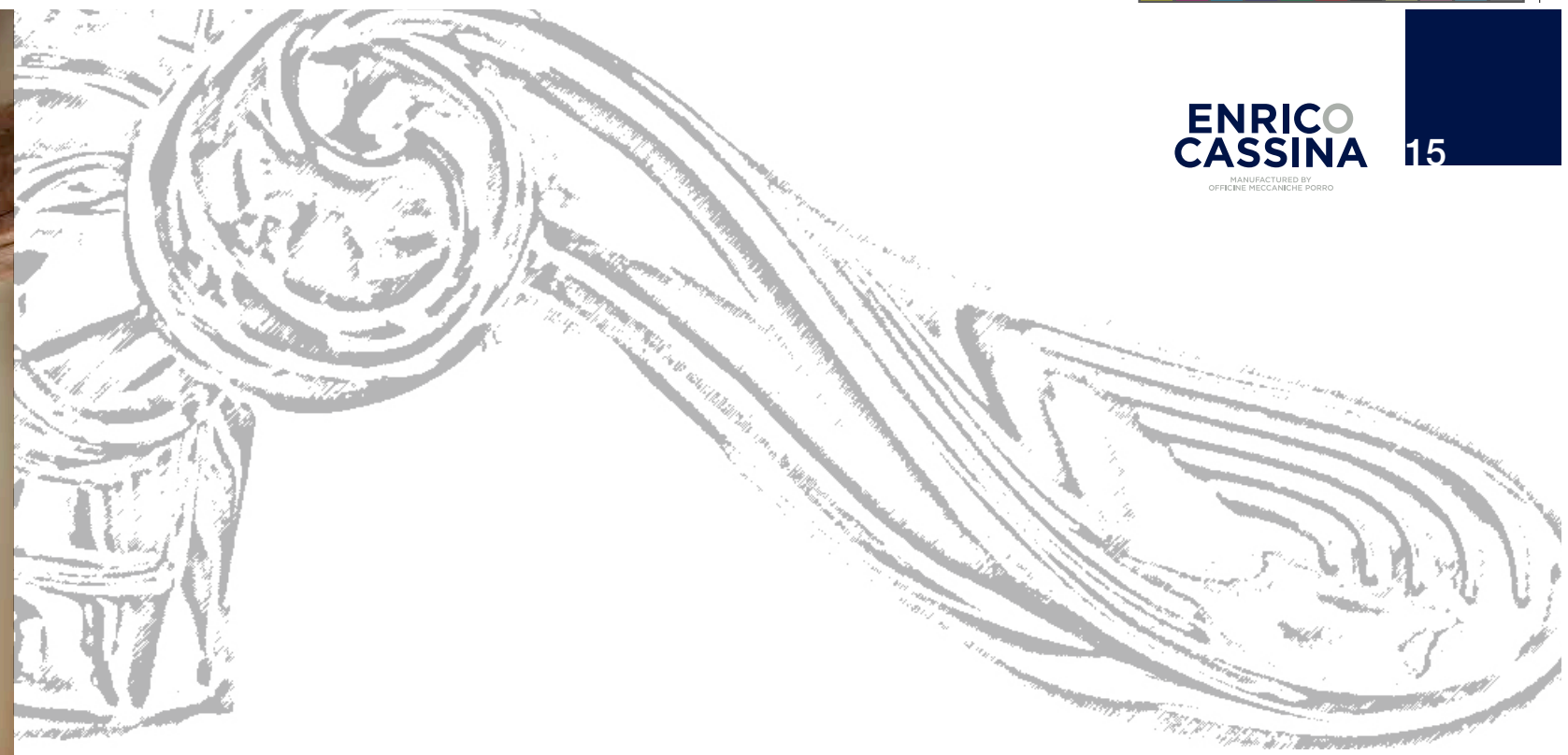


**ENRICO
CASSINA**
MANUFACTURED BY
OFFICINE MECCANICHE PORRO

HAFELE



LUIGI XV / LOUIS XV



Perfection of shapes

Mannerism, Baroque, Louis XV, Louis XVI, First Empire, Victorian, Second Empire, Floral Style, Art Deco, XX Style, Contemporary.

Each of these periods is not just a name. They are the result of a long process of selection, stylistic analysis, debates between art historians and technicians, to produce only objects that respect the original stylistic guidelines of an artistic period. Each escutcheon, each knob, every single decoration of all creations by Enrico Cassina expresses this complex and fascinating production process.



LA PUREZZA DELLO STILE DAL BAROCCO

PURITY OF STYLE FROM BAROQUE TO CONTEMPORARY THEMES



ART NOUVEAU

HAFELE

YESTERDAY,
TODAY,
TOMORROW.
ENRICO CASSINA
IN THE
WORLD

From noble residences and institutional or public buildings, to private houses, Enrico Cassina handles have decorated numerous places over the years and are recognised as a symbol of elegance and style. The quality of art and materials in these creations allows beauty to remain intact over the years. Today, just as yesterday, Enrico Cassina products express a clear style, an exceptional quality, Made-in-Italy symbol throughout the world.



SOFIA
DESIGNED BY ENRICO CASSINA



SOFIA



CERNIERE
DOOR HINGE



MANIGLIE INCASSO
FLUSH HANDLE PRIVACY VER-
SION



MANIGLIONI
PULL HANDLE



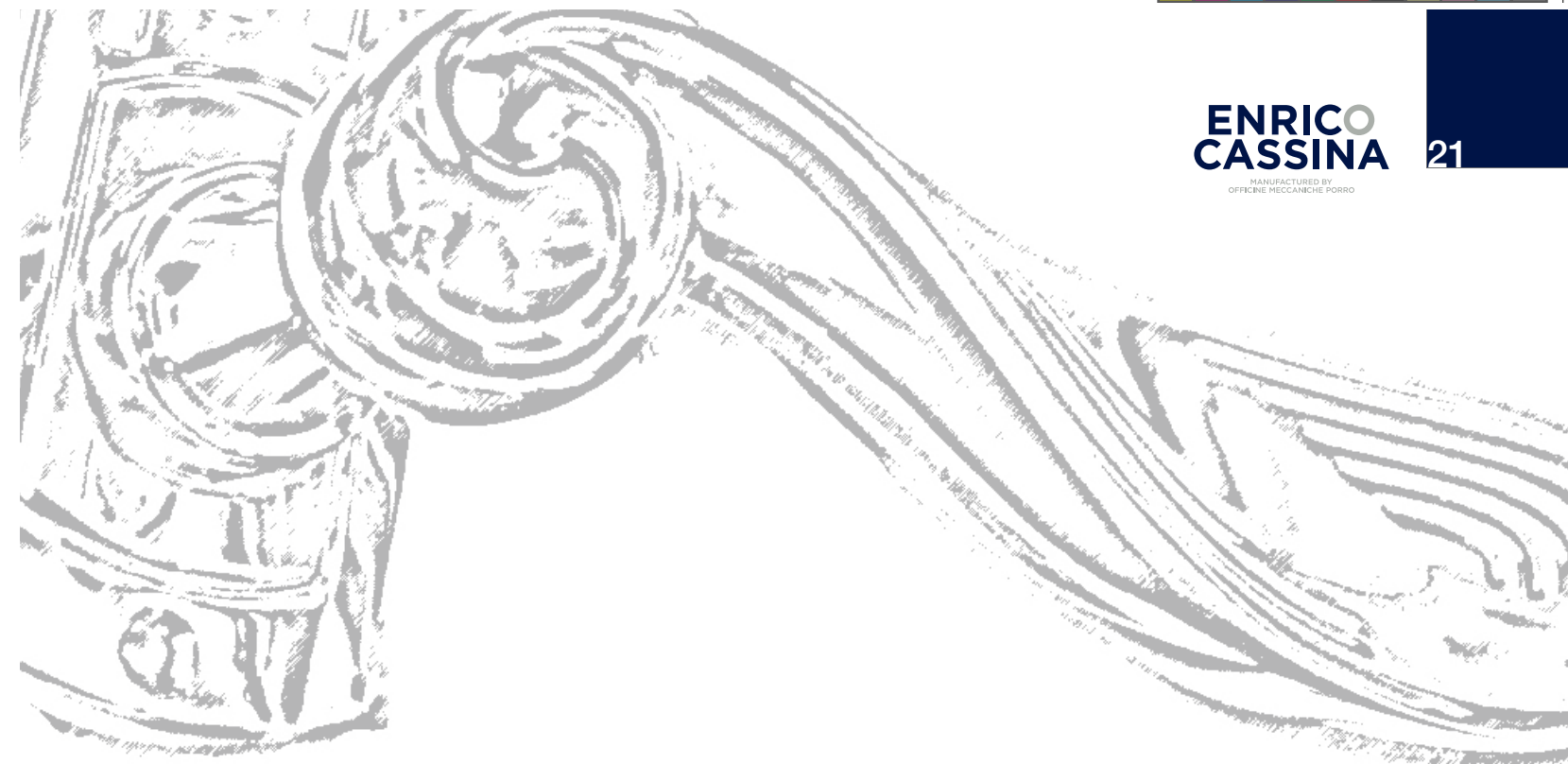
MANIGLIE INCASSO
FLUSH HANDLE



MANIGLIE INCASSO
FLUSH HANDLE



POMOLI PORTA
DOOR KNOB -
FIXED



Polished Brass
Not Lacquered



Polished Brass



Polished Brass
PVD



Gold Plated



Gold PVD



Old Gold
PVD



Imperial Gold



Antique Bronze



Ancient Brass



Old Gold



Matt Bronze



Matt Black

MATERIAL
BRASS

KEYHOLE




Euro Profile

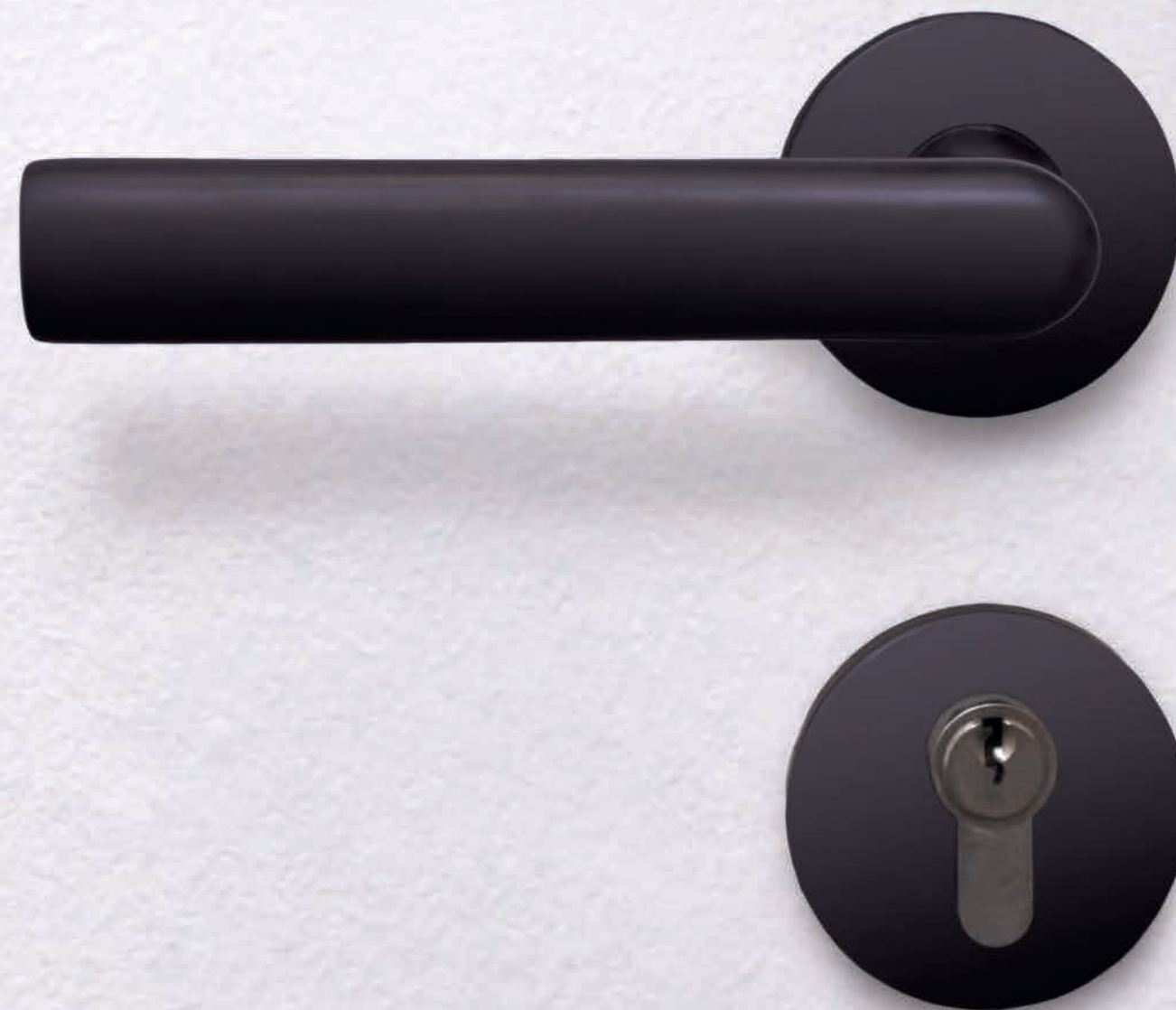
FRANZ SCHNEIDER **BRAKEL**

A GRIPPING STORY THAT'S NONE TOO SHORT

The FSB acronym is a byword the world over for visually and functionally top-quality system solutions for doors and windows – and a lot more besides. The specialist expertise we have amassed in over 135 years in business has, however, given rise to more than “just” premium door handles. Another reason architects and builders’ clients favour products from Brakel is that we have an advanced understanding of the requirements of modern Civic/Commercial construction. Everything that has anything at all to do with handle culture in built spaces - be it classic hardware, our barrier-free ErgoSystem® or electronic access management - is catered to from a single source.

GLOBAL BRAND FROM THE EASTERN WESTPHALIAN STICKS

 **FSB**



FSB

REINVIGORATES ALUMINIUM

In typically matter-of-fact manner, the Brakel firm uses the term "Blasted Aluminium Colour Anodized" to describe what it brought to the production stage following lengthy development and manufacturing tests: anodised colours in the form of satin matt aluminium finishes blasted with fine shot whose inimitable sheen and pleasant haptic quality lend them an allure of a kind never before seen.

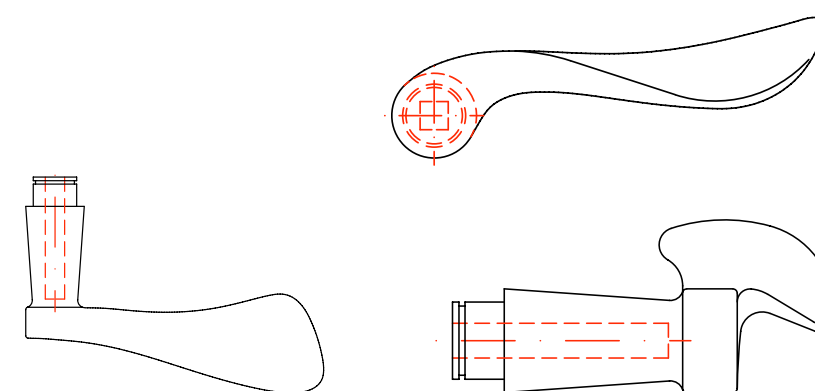
1250
BRASS DARK

HÄFELE



MODEL 1020

The FSB 1020 model is the clearest embodiment of the 'good form' of the 1950s. This is a handle with a flourish in the organic flow of its moulded-to-the-hand design that looks symmetrical to the eye. The FSB 1020 is one of four models from FSB designer Johannes Potente that have been added to the MoMA's permanent collection.





MODEL 1023

In the 1950s, the Swiss architect, sculptor and designer Max Bill got together with Ernst Moeckel to fashion a door handle that made design history as the 'Ulm handle'. From this, Johannes Potente created the 1023 model, which has been an alternative to common U-shaped models ever since.

CAFÉ ROYAL, LONDON DAVID CHIPPERFIELD

Following four years of renovation work the legendary Café Royal is now accommodating guests again. The team of architects around David Chipperfield has managed to strike a stylistic balance between 21st century modernity and the magnificent ambience of historic spaces from the 1860s and 1920s.

FSB was able - in the most literal sense - to make a valuable contribution to the Café Royal with its 1004 lever handle model, fittingly designed by David Chipperfield. The clean-lined formal vocabulary of this classically modern handle ably blends in with the mix of historical luxury and modern sobriety informing its architectural surroundings.

EVERY HANDLE A ONE-OFF

FSB has a tradition of working and shaping aluminium that stretches back almost a century and is at the very heart of the company's approach to materials. The treasure store of experience amassed in the process ensures unsurpassed quality from the initial melt to the final product.



Door handles in aluminium are cast by hand. The lightweight metal is scooped out at a temperature of 660 degrees Centigrade and formed into the required shape by a process known as gravity die casting: the aluminium fills the shaped cavity with the aid of nothing but the force of gravity.

Door-handle blanks are treated for several hours in a vibratory tumbler. This is where they attain the consummate quality so typical of FSB: their radii and edges are painstakingly gone over with a small ceramic sphere.



There is a dedicated tool for every single door handle model made in aluminium. Some 600 dies for the various handle models indicate just how uniquely versatile the FSB product range is.

FSB has enhanced its processing of aluminium by adopting a mix of manual and industrial methods that allows each of its many door handle designs to be "worked" out of the material to optimum effect. To a degree, then, each of our handles in aluminium is not only "made in Germany" but is done so by hand.



GEZE

A TRADITION OF INNOVATION

GEZE GmbH is numbered amongst the world's most successful suppliers of systems for door, window and security engineering. As one of the market leaders in innovation and design, the company, which was established in Stuttgart in 1863, develops, produces and distributes top quality technology that has had a major influence on building management systems. The products undergo ongoing further development in the company's own technology centre.

QUALITY "MADE IN GERMANY"



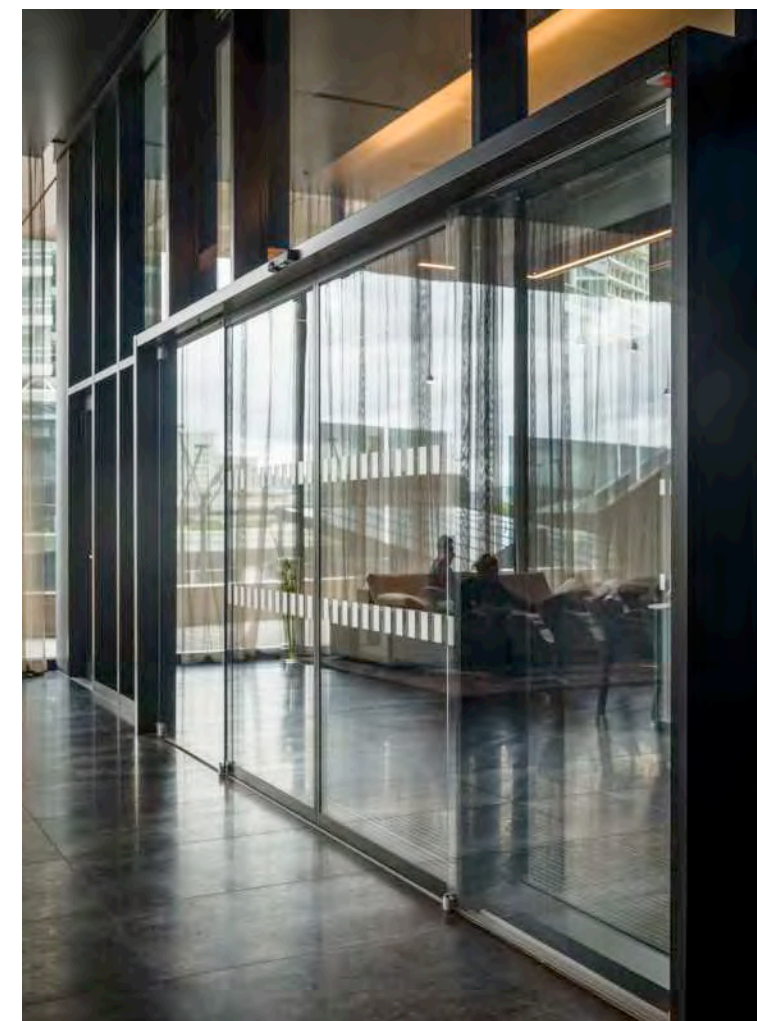
GEZE

HAFELE

GERMAN EXCELLENCE



GEZE stands for quality “Made in Germany” around the world. Which is why GEZE products are manufactured and installed at all its locations in accordance with German quality standards. But the quality mark stands for much more. At GEZE, it is confirmed through innovations and a focus on the future, which are systematically supported and promoted. And this isn’t just reflected in the technology but also in terms of intelligent functionality, sustainability and unique design. GEZE products and system solutions constantly undergo internal and external monitoring and have been awarded various internationally recognised approvals, test certificates and quality marks by both national and international institutes. These guarantee the high GEZE quality, not just in Germany but around the world.



Whether in residential care homes, facilities for the disabled, hospitals or airports, the topic of accessibility in public buildings is here to stay. At the same time, reliable safety systems for personal protection and fire detection are essential in buildings where many people congregate together. GEZE creates accessible and comfortable solutions in combination with tailored standard solutions. And these are system-solutions, as the

different GEZE components can be combined with each other as required. As well as safety and comfort, the look of the utilised technology plays a decisive role for architects and planners. With its new developments, GEZE is continually making moves towards creating an unobtrusive, low-key design - always with the goal of integrating intelligent technology attractively and discreetly into buildings.

GEZE

The Expert in Door Closers

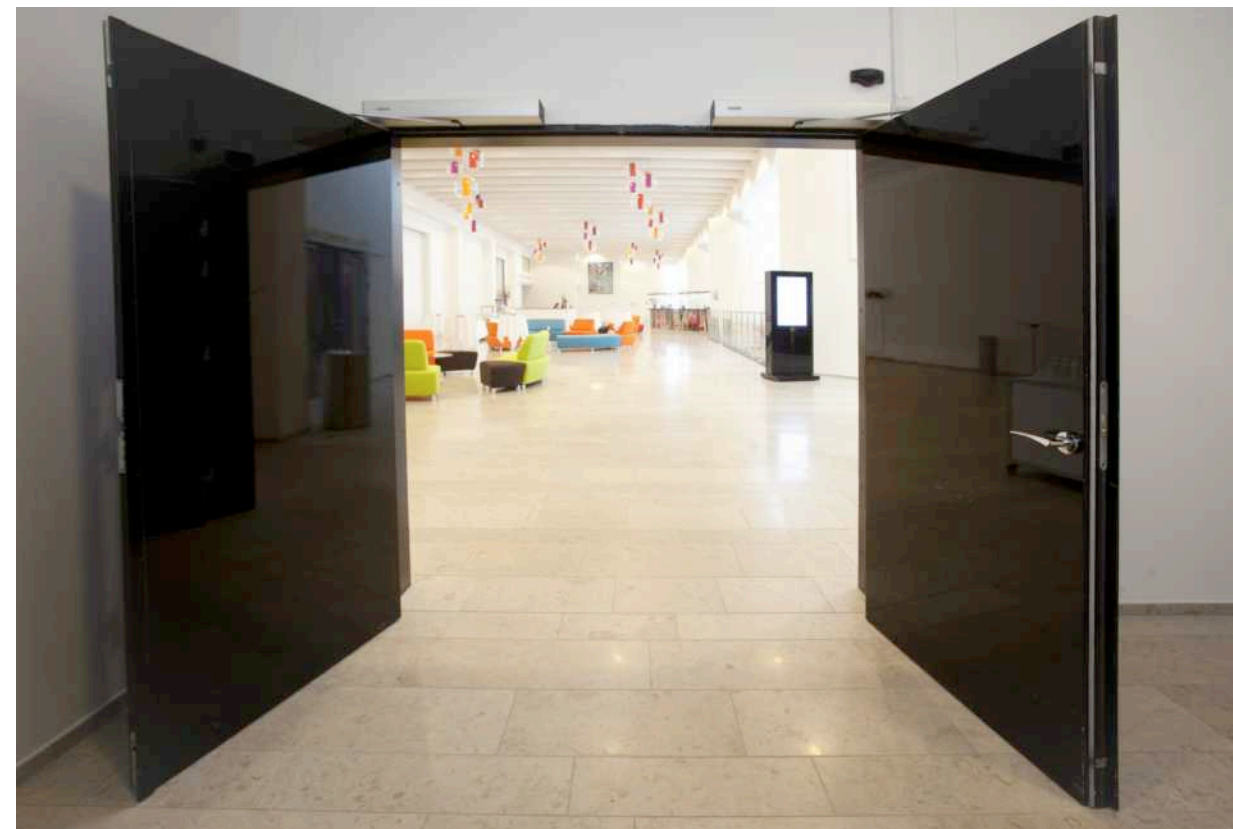
Double-sided draw-in damper for controlled opening and closing of swing doors for internal application



The functionality, superior performance and reliability of GEZE door closers are impressive. A common design across the range, the ability to use them on all common door leaf widths and weights, and the fact that they can be individually adjusted makes their selection simple. They are continually being improved and enhanced with up-to-date features. For example, the requirements of fire protection and accessibility are fulfilled with a door closer system.

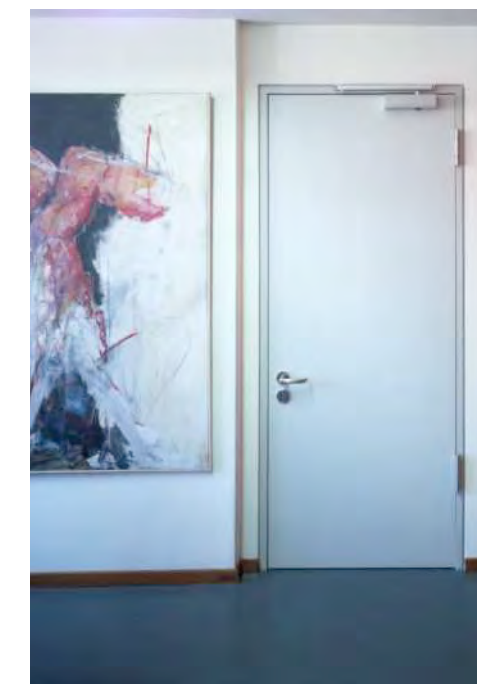
AUTOMATIC DOOR SYSTEMS

GEZE automatic door systems open up a huge variety of options in door design. The latest, high performance drive technology drive technology, safety, ease of accessibility and first class universal drive design set them apart. GEZE offers complete solutions for individual requirements.



SAFETY TECHNOLOGIES

GEZE safety technology sets the standards where preventative fire protection, access control and anti-theft security in emergency exits are concerned. For each of these objectives GEZE offers tailored solutions, which combine the individual safety requirements in one intelligent system and close doors and windows in case of danger in a coordinated manner.

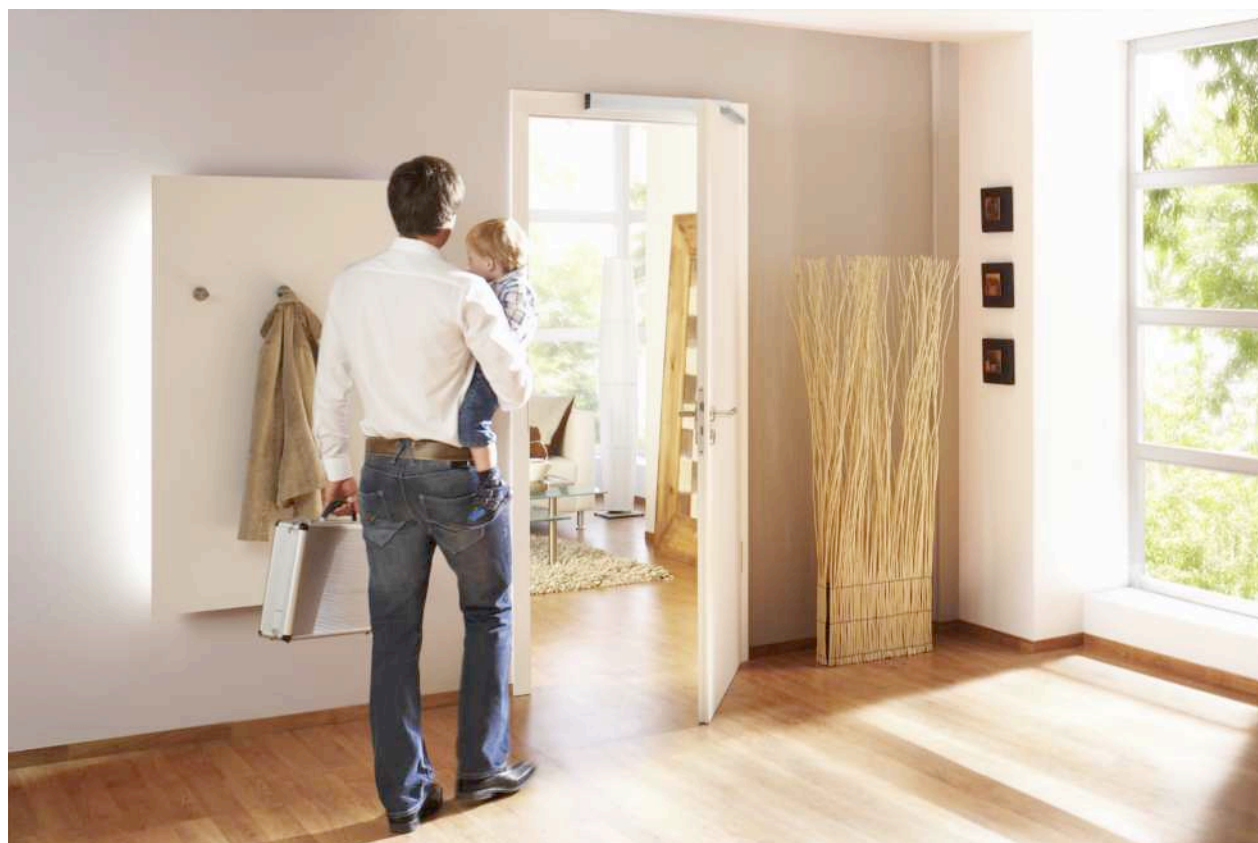




Flight Forum, Eindhoven, The Netherlands (Photo: Erwin Kamphuis)



GEZE AUTOMATIC DOOR SYSTEMS



ACTUATION

devices and sensors



For the reliable operation of an automatic door, the choice of the appropriate control element is of considerable importance. The range of the GEZE Actuation Devices offers optimum control for every door situation. The GEZE Actuation Devices control and safeguard all GEZE products in accordance with international standards. A single source supplier enabling complete solutions designed to meet individual requirements.

The choice of the appropriate control element is of considerable importance to ensure the reliable operation of an automatic door. The GEZE control elements product range offers the optimum variant for every door situation. The GEZE control elements control and safeguard all GEZE products in compliance with international standards. A single-source-supplier enabling complete solutions designed to meet individual requirements.



APPLICATION RANGE

- Safeguarding and actuation of automatic doors

PRODUCT FEATURES

- GEZE control elements offer the optimum control element for every door situation
- Safeguarding and control of all GEZE products in compliance with international standards
- Single-source-supplier for individual requirements

HAWA SLIDING SOLUTIONS

SLIDING HARDWARE SYSTEMS WITH SWISS PRECISION

Hawa Sliding Solutions is the global market and technology leader for sliding on buildings, in buildings and on furniture. Superior product and system solutions inspire our customer and partners in using sliding systems and make them successful. We create new impetus for sliding time and time again with innovative applications, systems and materials.

MADE IN SWITZERLAND



SLIDING PROVIDES MANY ADVANTAGES

Sliding makes top-class architecture and innovative design possible. It puts the focus on the aesthetics and quality of a building, a room or a furniture item. Its functionality may be invisible, but its functional effect is outstanding.



TRANSFORMING VISIONS INTO ROOMS

We offer a vast range of sliding solutions for the whole building and for different segments of architecture. Our major categories are: Hospitality, Residential, Health Care and Corporate.

SIGNATURE AND SUSTAINABILITY

- Sun protection and privacy
- Architectural art – design elements
- Define room light reflection - create any scenes and spaces
- Easy, effortless motion in any position
- Versatility through fixed and movable Elements (folding and sliding)
- Sustainability - savings in cooling and heating

WE PUT THINGS IN MOTION

Global technology leader for various sliding hardware systems

INSPIRATION

See the various options and benefits of sliding solutions in the following applications. Let yourself be inspired!



HOUSES AND VILLAS





EVENTS AND MEETINGS

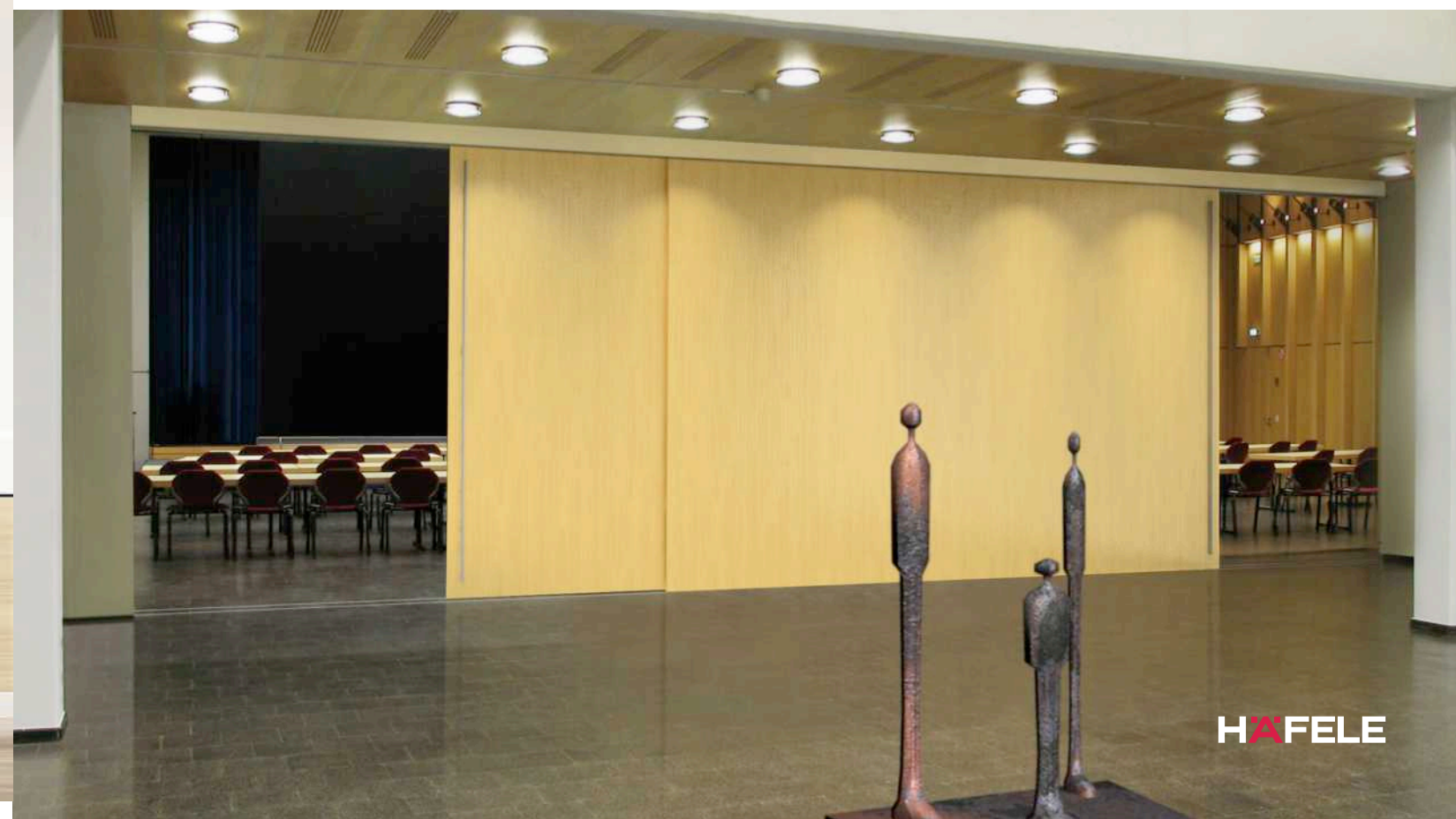
MULTIFUNCTIONAL AND REVENUE GENERATING

- Enhanced flexibility and efficient space use - lecture hall (day), banquet hall (night)
- Increased performance - suitable, personalized experience - business and leisure combined
- Customization possibilities - according to your customer needs



FLEXIBLE AND PREMIUM

- Create flexibility - free access during opening hours, premium showcase after closing time
- Usability - easily and safely movable by hands
- Space savings - easy stacking
- Modular systems - customized solutions
- Multi-optional - enable openness and privacy at the same time



HÖRMANN

RELIABLE AND ORIENTED TOWARDS THE FUTURE

“A good reputation must to be earned.”

August Hörmann

In line with the founder's philosophy, the Hörmann brand today is a true promise of quality. The family-owned company has over 75 years of experience in door and operator construction and, with sales of over 20 million doors, is No. 1 in Europe. This makes a Hörmann sectional door a reassuring purchase.

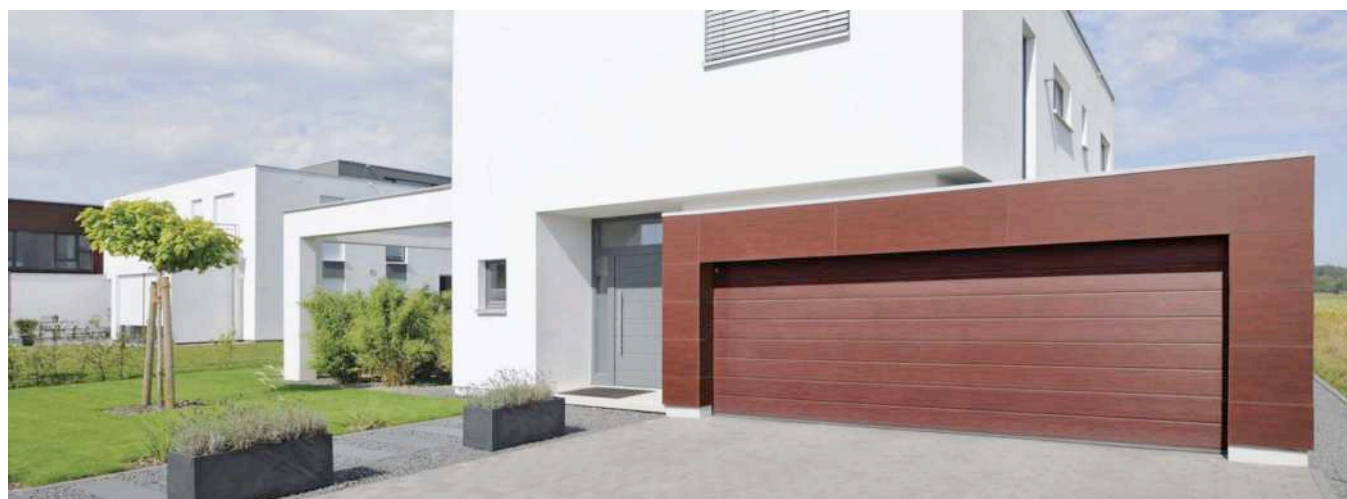
MADE IN GERMANY



BRAND QUALITY MADE IN GERMANY

All doors and operator components developed and manufactured by Hörmann are perfectly matched to each other as well as being tested and certified by independent, recognised institutes to ensure your safety. All doors are manufactured according to the DIN EN 9001 quality management system and meet the requirements of European standard 13241-1. Furthermore, our highly qualified employees work intensively on new products, continual further developments and improvements to details. Patents and unique products resulted from this.





GARAGE DOORS FOR GENERATIONS

Endurance tests under real conditions ensure mature series products with Hörmann quality. Thanks to excellent technical solutions and uncompromising quality assurance, you receive a reliable warranty on all sectional doors and operators

DESIGNED FOR EVERY FITTING SITUATION

The shape of the garage door opening is not of prime importance. Whether square, angled, with segmental or full centred arch – a sectional door always fits.

TREAT YOURSELF TO THIS COMFORT AND CONVENIENCE

Sectional doors open vertically upwards and are suspended under the ceiling to save space. This construction principle means you can make full use of the space inside and in front of the garage. Additionally, sectional garage doors can be fitted in every garage door opening, offer a wider passage width and are optimally sealed.



WIDER PASSAGE

With older up-and-over doors, driving in and out is often a matter of millimetres. Sectional doors with a passage width extended by up to 14 cm also make it much easier to park modern, larger vehicles and SUV's.





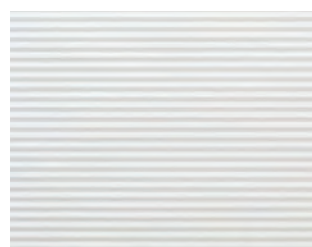
The perfect appearance is a good reason to try Hörmann.

WOODGRAIN



Traffic white, RAL 9016

MICROGRAIN



Traffic white, RAL 9016

DECOGRAIN



Golden oak



RAL to choose



RAL
9002 9006 9016 7016



Golden oak Rosewood



HÖRMANN: CONVENIENCE & SECURITY

Modern garage doors in uncompromising quality

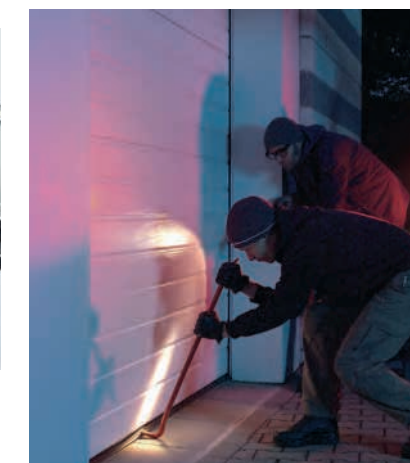
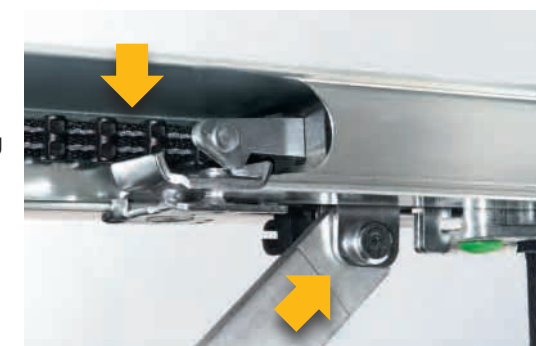
FAST OPERATOR

Opening speed max. 22cm/second
50% faster than regular operators.



BREAK-IN PROTECTION

The automatic mechanical lock
secures the door against forced opening
even in case of power failure.

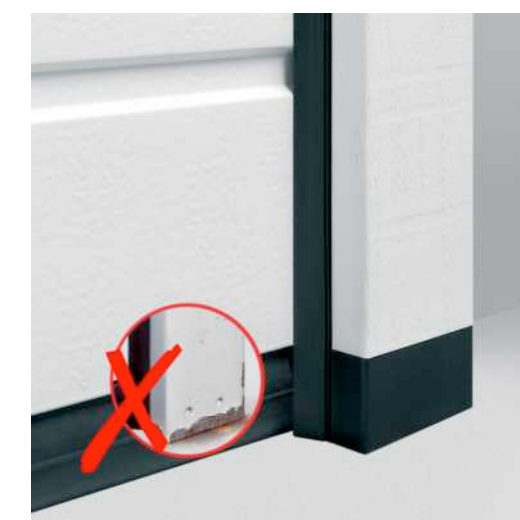


CHILD SAFETY

A photocell sensor in the opening
immediately stops the door
before it encounters an obstruction.

OPTIMUM LONG-TERM PROTECTION

Weather resistant seals on all four sides
keep out wind, rain and vermin.
Corrosion resistant frame shoes
offer true long-term protection.



JATEC CONTEMPORARY STYLE

LUXURY DOOR HANDLES

After many years of exclusive ownership in the production and distribution of handles and accessories of the highest possible standard in the market, Jatec GmbH is confirming its presence in the market with even greater strength. The history, style and quality of brand, together with the technology and service provided, are now total ownership of JATEC GmbH, a trademark already distributed in many countries worldwide.

THE JATEC QUALITY IS NOT ONLY TECHNIQUE BUT ALSO CREATIVITY, ART AND INNOVATION.



JATEC
STIL BEGREIFEN

HÄFELE



POLISHED CHROME

SOFT MODERN

Matteo Thun is an Italian designer and three times winner of "Golden Compass". With his degree in architecture, he is active mainly in the field of building design (see also Side Hotel Hamburg "Hotel of the Year" in 2001), but he also creates everyday objects as Jatec handles.



BAUHAUS

BAUHAUS was born in the heart of the rationalist school. More than a century old for this handle that represents the modern art in the world of interior design and doors design.



-  **Brushed Chrome**
-  **Diamond Finish**
-  **Polished Chrome**
-  **Stainless Steel - Ultra Brushed Nickel**
-  **Ultra Brushed Nickel**
-  **Ultra Nickel**



MODEL BAUHAUS, AVAILABLE IN THE VERSIONS WITH EURO PROFILE CYLINDER, MAIN ENTRY DOOR SETS AND WC.

CONTEMPORARY TOUCH



-  Polished Chrome - Black
-  Ultra Brushed Nickel - Black

MODEL METROPOL, AVAILABLE IN THE VERSIONS WITH EURO PROFILE CYLINDER, MAIN ENTRY DOOR SETS AND WC.



Metropol Holz

HÄFELE



ID-9

From cylinder to the handle, a parallelepiped linear develops in a single piece that creates a handle stable and of great visual impact. The handle design is signed by Achim Pohl and Tomas Fiegl (Studio Artefakt).

LOOP

Like a drop upside down, the handle follows the hand in a wrap-around design that is signed by Achim Pohl and Tomas Fiegl. A door handle design style defined but customizable on the front with special inserts.



PURE

Achim Pohl and Tomas Fiegl (Studio Artefakt) created for Jatec a handle design that is the essence of minimalism. And of pure elegance.



METROPOL HOLZ

The charm of the twenties back in the present. The elegance of extravagant METROPOL reports on the doors and the finest homes today the unique atmosphere of the Art Nouveau villas. A dream full of charm. The handle design is signed by Achim Pohl and Tomas Fiegl (Studio Artefakt).



KABA

SWISS QUALITY

With its innovative products and services, globally active technology group Kaba is a leading provider of high quality access management solutions, keys, cylinders, physical access systems, enterprise data and time recording, and hotel access systems.

MADE IN SWITZERLAND



KABA

HAFELE



EF680 DIGITAL DOOR LOCK

Designed artistically for luxury apartments and houses, EF680 offers no compromise when it comes to reliability and performance, featuring security, dependability and versatility in attractive designs and finishes. EF680 is assembled with superbly engineered high grade materials for long-lasting reliability and its sleek and chic design guarantee to complement your taste and lifestyle.



The E-Flash EF680 is an ideal digital door lock for residential purposes. The E-Flash EF680 is not only stylish in design but is also simple to use, with built-in voice guide function.

The EF680 provides the convenience of proximity card or password identification access. The voice guide function has a volume control and assists users to operate and set functions with ease and convenience. When the door is securely locked and an outsider tries to break into the premises by forcibly opening the door or damaging the lock, a built-in trespassing/damage alarm is activated. The EF680 has an automatic lock mode with manual override.



The EF680 eliminates the need for keys with the simple to use digital touch pad and allows easy registration of pin code or proximity card.



EF780

DIGITAL DOOR LOCK

The E-Flash 780 is the biometric version of the E-Flash series and is operated by the presentation of a registered fingerprint.

The EF780 model supplies complete freedom as you become the key needed to unlock your door. Imagine the freedom of taking the dog for a walk without having to carry keys, or the convenience of being able to leave the keys in the ignition of your car and still be able to re-enter your home for that forgotten item.



FEATURES

- Digital touchpad design
- Standard or double security access modes
- Easy to operate and programming
- Break-in and damage alarm
- Enhanced security with scramble code features
- secure & durable European type lockcase with automatic locking function
- 2 colors for choice
- Low battery power and malfunction alert
- External power supply terminal and mechanical key override for emergency
- Voice guide with volume control
- Remote control (optional)



The EF780 digital door lock features a fingerprint entry or PIN Code entry system, remote control for added flexibility and mechanical key override.



78

KABA



EF680 BLE
Silver



KABA

79



BLE SERIES

Designed artistically for luxury apartments and houses, E-Flash BLE offers no compromise on reliability and performance, featuring security, dependability and versatility in attractive designs and finishes. Enable dormakaba smart lock app in your smart phone to experience a keyless access lifestyle by sharing bluetooth keys to visitors and managing the valid time zone via the app. To set up the smart lock app, the serial number of the lock and your mobile phone number are required. To protect your privacy, no other personal data are required.

HAFELE



EF780 BLE ROSE GOLD

E-Flash BLE eliminates issues commonly associated with mechanical keyed locks. It's easy to misplace your keys or accidentally lock keys inside your home. This isn't a problem with E-Flash BLE. You can now unlock your door with a simple touch.

MULTIPLE UNLOCKING METHODS FOR MULTIPLE USERS

E-Flash BLE supports four types of unlocking methods which include APP, fingerprint, Card key, PIN Code, and Mechanical Key Override. You can share digital keys via communication apps to visitors who occasionally come, and set valid time zone from 10 minutes at minimum to 31 days at maximum, or even one time use only.



Single touch to unlock

ROBUST AND FLEXIBLE MECHANICAL STRUCTURE

Employing advanced engineering and structural design, E-Flash BLE provides uncompromising quality: tested to over 200 thousand duty cycles. E-Flash BLE boasts reliable and secure European or Australian style mortise locks with automatic locking function.



SIMPLE INSTALLATION AND USE

E-Flash BLE is designed for ease of use and installation for new or existing homes. Works as a standalone unit and requires no hard wiring during installation, eliminating the expensive material and labor costs of installing electrical wiring. User registration and various settings can be done directly at the device and the process is facilitated by voice prompts and intuitive touchpad, which allows every user, including children and seniors, to operate easily.



KAWAJUN

JAPANESE INTERIOR HARDWARE

KAWAJUN's strength as a company arises from a streamlined organization that prizes flexible thinking. Our primary focus is always to anticipate customer needs. With our horizontally aligned organization, account executives are empowered to work with representatives of every area of the company, resulting in remarkably rapid responses to consumer needs. And the uncompromising quality of KAWAJUN products is a direct result of our open internal communication and seamless operational and managerial processes.

MADE IN JAPAN



KAWAJUN

HAFELE

KAWAJUN has built a loyal customer base for our decorative interior hardware products. Sophisticated design augments the highest quality materials, production techniques and finishes to produce a standard of durability that exceeds the most stringent customer specifications. In addition, aesthetic considerations and universal usability are designed into all of our products. KAWAJUN continues to deliver the high quality demanded for today's increasingly individualized living spaces.

Realization possible because it is KAWAJUN. Our products are designed to be both aesthetically striking, universally practical and convenient. We continue to deliver the level of quality demanded by the increasingly individualized market for decorative interior hardware.

Lever Handle with Rose & Escutcheon



Material: Solid Brass
Finish: Rose Gold

Available Finishes



Chrome Rose Gold Satin Nickel

Realization possible because it is KAWAJUN.

This is our art, backed by more than 65 years of history, reliable technique and a determination to our craftsmanship. KAWAJUN offers design-oriented interior hardware products for sophisticated residential spaces. Boasting sophisticated design and unrivaled quality, KAWAJUN's decorative interior hardware products have built a loyal worldwide base of customers who recognize our commitment to maintaining standards that far exceed the norm. We select only the best materials available, manufacturing and finishing them with meticulous craftsmanship.



KAWAJUN products are designed to be both aesthetically striking, universally practical and convenient. We continue to deliver the level of quality demanded by the increasingly individualized market for decorative interior hardware.

Lever Handle with Rose & Escutcheon

KAWAJUN offers a wide range of decorative interior hardware preferred by developers, homebuilders, luxury hotels and contractors.

Material: Zinc + Leather
Finish: Chrome & Black Leather

Note:
Lever handle with Rose and Escutcheon only

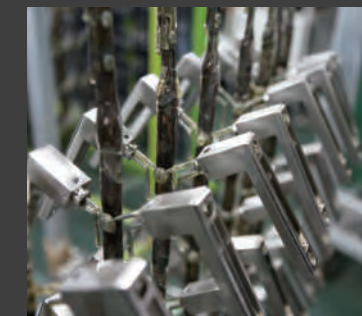


THE QUALITY
OF OUR
PRODUCTS IS
ONE PROOF
OF **KAWAJUN'S**
COMMITMENT
TO CUSTOMER
SATISFACTION.



That commitment also led us to create the Imaichi Technical Center, where we oversee all functions of manufacturing, quality assurance and distribution.

This intelligent production center helps us not only to perfect processes to achieve quality and speed, but also to manufacture small volume products flexibly to satisfy diverse, individualized market segments.



KAWAJUN has applied the same policy to its technical center in China, where our products are shipped only after thorough quality inspections. We will continue to expand our domestic and global sourcing coverage in order to improve our competitiveness in both quality and cost.

SIMONSWERK

HINGE SYSTEMS IN MOTION

For more than 125 years, SIMONSWERK has been one of the most well-known manufacturers of door hinges and hinge systems for heavy-duty, residential and entrance doors. Committed to high quality standards, the company is always willing to innovate and strives for long-lasting customer relationships.

INNOVATIVE SOLUTIONS FOR HEAVY-DUTY, RESIDENTIAL AND ENTRANCE DOORS.

 **SIMONSWERK**

HÄFELE



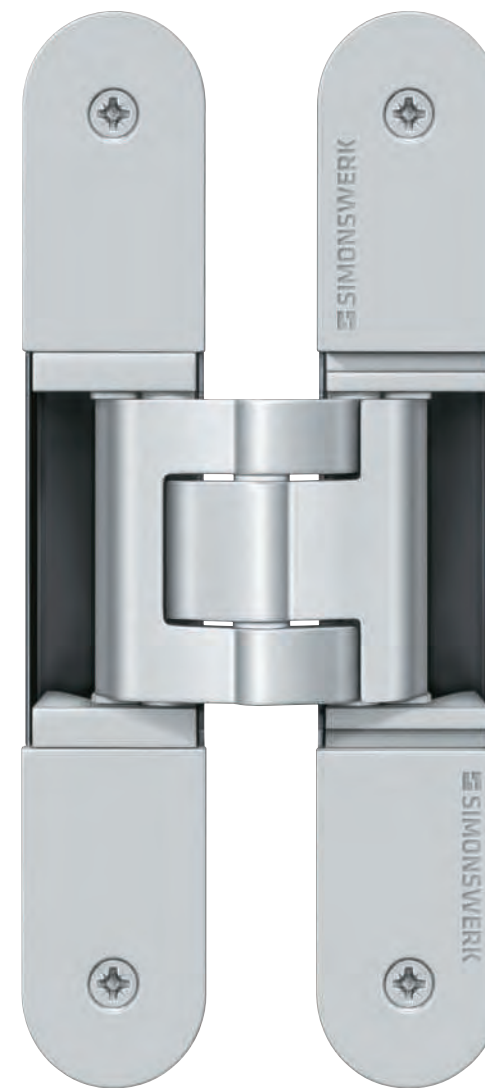
INVISIBLE HINGE

TECTUS

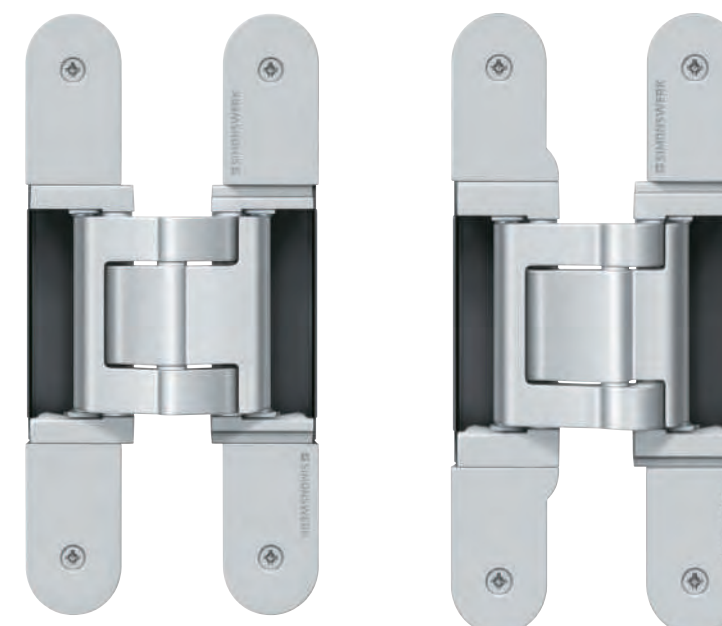
THE COMPLETELY CONCEALED HINGE SYSTEM

“Making something invisible is also design!” There is a certain appeal in designing items in such a way that their actual value is initially in the background, thereby giving space to other elements. Flush mounting is a stylistic principle that exudes minimalism and involves precise technology and perfection.

In this way, the completely concealed hinge system TECTUS enables unrebated doors to be completely flush and therefore integrated into rooms designed with straight lines. When closed the door will remain visible, with an invisible hinge system. TECTUS carries load capacities up to 300 kg, enables an opening angle of 180 degrees and can be used on timber, steel and aluminium frames. Three-dimensional adjustment and maintenance-free slide bearing technology are used for high-quality interior doors and functional heavy-duty doors.



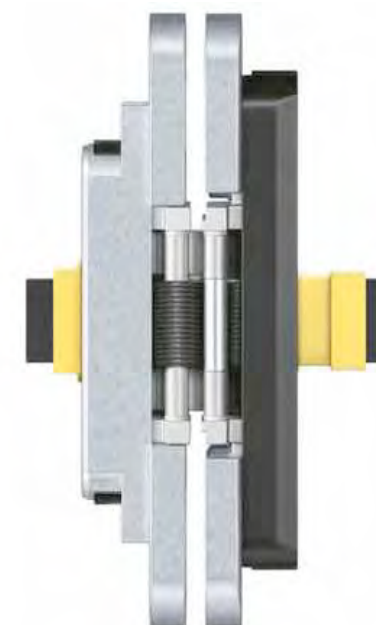
The wide range of surfaces enables a variety of applications – they can be harmoniously tailored to an architectural concept and fittings and can completely blend into the background when the respective door is closed.



TECTUS ENERGY

CUTTING-EDGE ENERGY TRANSFER

With TECTUS Energy, the door leaf receives a guaranteed and permanent energy supply from the frame, without the geometry of the door or frame being weakened. The technology provided offers compatibility with all the most popular designs for locks and fittings while preserving all the technical and visual features of the TECTUS product range.



PRODUCT FEATURES

- With permanent energy transfer
- Individual connection adapter options
- Completely concealed hinge system
- For timber, steel or aluminium frames
- For unrebated and rebated flush residential doors
- 3D adjustment (side +/- 3,0 mm, height +/- 3,0 mm, compression +/- 1,5 mm)
- Maintenance-free slide bearings

OUR QUALITY PROMISE





EVERY PRODUCT A MASTERPIECE



MADE IN GERMANY

State-of-the-art production techniques and perfectly matched workflows in production maximise flexibility. An in-house construction department creates tools to ensure maximum precision in production. Quality assurance is not just about carrying out checks. It also means continuous improvement and ongoing development. Material tests and quality inspections are carried out in close collaboration with test institutes. They include fire protection and smoke protection tests, tests to verify burglar resistance and soundproofing as well as endurance tests compliant with CE directives. Last but not least, the company's location at Rheda-Wiedenbrück in East Westphalia makes an essential contribution to ensuring that the company's "Made in Germany" quality promise will continue to be genuinely and enthusiastically invested in and lived out by its employees for many, many years to come.

A company's philosophy is ultimately reflected in its products. At SIMONSWERK, this means perfection in everything we do, right from the start. Our quality promise starts when we select raw materials. The use of high-quality materials maximises design freedom and opens up many and varied options for surface refinement and corrosion protection.

BLANCO

FRESH IDEAS FOR THE KITCHEN

The BLANCO Group is one of the world's leading providers of high quality sinks and mixer taps for domestic kitchens. The company is Germany's biggest sink manufacturer, and produces sinks in the main materials stainless steel, Silgranit and ceramic.

Our company has over 1500 employees and they are the foundation of our success. In 2017 the company turned over 379 € million, around 66 % of it on international markets.

The family company was founded in 1925, and since then has stood for German quality and reliability. Together with E.G.O., BLANCO Professional, DEFENDI and Arpa, BLANCO forms the BLANC & FISCHER family holding.

MADE IN GERMANY

BLANCO

103



HÄFELE





BLANCO METRA

INSET SINKS - SILGRANIT

Clear forms, eye-catching contours - the corners and edges of the BLANCO METRA sinks in Silgranit enhance the young, straight-lined design.

The perfect combination of good looks and great features, such as the ultra-large bowl. Practical accessories complete this attractive family of sinks.



CLEAN LINES, MAXIMUM COMFORT

- Young, straight-lined design
- Attractive line of sinks in the medium price category
- The particularly spacious bowl provides an unsurpassed amount of room
- Spacious draining area provides a high degree of comfort
- Aesthetic low profile rim design
- Can be installed reversibly
- Also available as flushmount version

BLANCO MASTER-S SEMI-PROFI

- Precise, architectural design
- Flexible spout (stainless steel spring) with movable spray hose
- Comfortable usage of the spray supported by stainless steel spring
- Easy to secure the spray in the spray holder
- Extended action radius with 360° swivelling spout (stainless steel spring) Spray holder is freely positionable -> on the left, in the middle on the right for left- or right-handed users
- Spray function: Safe securing of the spray function 2 choices of jet: normal and spray



KITCHEN SINKS MIXER TAPS

Is a mixer tap the object of your desires? Discover the variety available from Germany's market leader - first-class quality, fabulous design, and a tremendous choice.

The BLANCO LINUS mixer tap family is one of the biggest and most popular in our range of kitchen mixer taps. The elegant single-lever mixers delight with their minimalistic, timeless designs and exclusive functionality, and for many are simply the perfect tap for the kitchen.



HÄFELE

Häfele, an international company providing hardware and fitting systems and electronic locking systems, has a long and rich history that began in 1923. Today customers from 150 countries rely on Häfele's expertise and performance.