

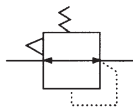
Precision Regulator



IR



Symbol:



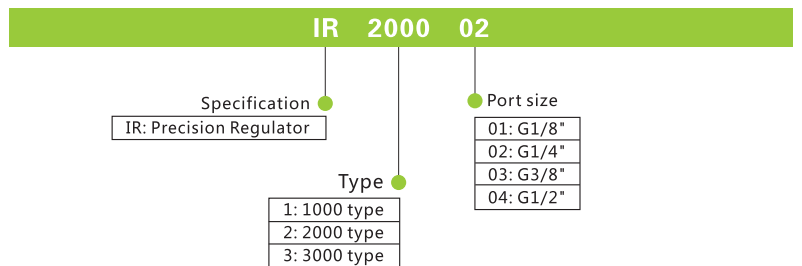
Product feature:

1. Compact and light weight.
2. Flow rate is 20% higher than that of traditional ones(Max.Flow Rate:1 l/min).
3. Exhaust rate is 5 times higher that of traditional ones.
4. Precise pressure setting.
5. Easy for mounting, capable of mounting individually, together with modular filter combination and mounting on panel.
6. Piloted exhaust and main exhaust are separated.
7. Applicable for clean room.

Specification:

Type	IR10□0-01	IR20□0-02	IR30□0-02/03/04
Port size(G)	01:1/8", 02:G1/4", 03:G3/8", 04:G1/2"		
Fluid	Compressed air		
Operating pressure range MPa	IR1000:0.005~0.2 IR1010:0.01~0.4 IR1020:0.01~0.8	IR2000:0.005~0.2 IR2010:0.01~0.4 IR2020:0.01~0.8	IR1000:0.01~0.2 IR1010:0.01~0.4 IR1020:0.01~0.8
Ambient temperature(°C)	-5~60		
Sensitivity	Within 0.2% of full scale		
Repeated precision	Winthin ±0.5% of full scale		
Airconsumption(At the pressure of 1.0Mpa)	Max.within4.4min(ANR)	Max.within4.4min(ANR)	Max.within11.5min(ANR)

How to order:



Precision Regulator

Dimension(mm)

