

Shut-off Valve



HVS



Symbol:



Product feature:

1. It is module design, with bracket can be used with AC series F.R.L.
2. This valve can be used as 2 position 3 way valve.
3. Specific EXH. / SUP. Switch logo is on the products.
4. This valve meets the standard on safe operation by operator specified by Occupational Safety & Health Administration. Before maintaining and servicing the equipment, turn off the air supply and release the residual pressure in the system. In order to prevent the third party during the maintenance of unintentional operation and put away the system pressure and action, so the provisions of the valve for this purpose must be coupled with safety locks.

Inner structure drawing:

Number	Name	Material	Number	Name	Material
1	Bottom cover	Zinc NBR	8	Axis	Alloy steel
2	O-ring	NBR	9	Turn-knob	Zinc
3	Valve core rod	Valve core rod	10	Spring seat	Medium carbon steel
4	Reset spring	Stainless steel	11	Hex nut	Medium carbon steel
5	O-ring	NBR	12	Elastic gasket	Spring steel
6	Spring	SWC	13	Piston	Aluminium
7	Set screw	Medium carbon steel	14	Body	Cast aluminium

Specification:

Type	HVS200-01	HVS200-02	HVS300-02	HVS300-03	HVS400-03	HVS400-04	HVS500-06	HVS500-08
Port size G	1/8"	1/4"	1/4"	3/8"	3/8"	1/2"	3/4"	1"
Fluid	Compressed air							
Acting type	Manual							
Position number	2 Position 3Way							
Operating pressure range(MPa)	0~0.9							
Ambient temperature(°C)	-20~70							
Outlet diameter(mm)	8		10		15		25	
Max. pressure resistance(Mpa)	1.5							
Operation angle	90°							
Suitable F.R.L type	AC200A-01	AC200A-02	HVS300-02	AC300A-03	AC400A-03	AC400A-04	AC500A-06	AC500A-08

How to order:

HVS 200 02

- Specification: HSV Shut-off Valve
- Series: 200 Series, 300 Series, 400 Series, 500 Series
- Port size: 01: G1/8", 02: G1/4", 03: G3/8", 04: G1/2", 06: G3/4", 08: G1"

Dimension(mm):

Name	A	B	C	D	E	F	G	H	I	J	K
HVS200-01	40	61	39	28	22	45	G1/8"	18	18.5	5	G1/4"
HVS200-02	40	61	39	28	22	45	G1/4"	18	18.5	5	G1/4"
HVS300-02	53	80	50	30	28	53	G1/4"	22	24.4	6	G3/8"
HVS300-03	53	80	50	30	28	53	G3/8"	22	24.4	6	G3/8"
HVS400-03	70	86	53	36	36	-	G3/8"	-	-	-	G1/2"
HVS400-04	70	86	53	36	36	-	G1/2"	-	-	-	G1/2"
HVS500-06	90	138	73	54	48	-	G1/2"	-	-	-	G1
HVS500-08	90	138	73	54	48	-	G1	-	-	-	G1

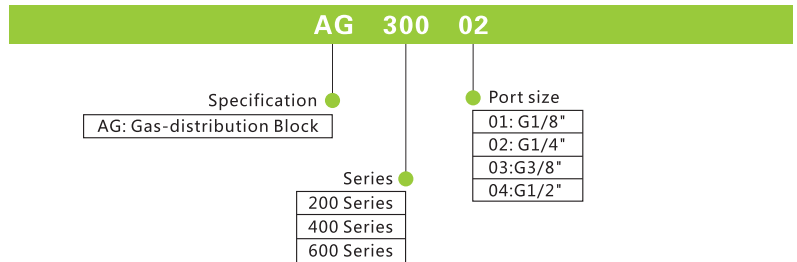
Gas-distribution Block



■ Specification:

Type	AG200-01, 02	AG300-02, 03	AG400-03, 04
Port size(G)	1/8" · 1/4"	1/4" · 3/8"	3/8" · 1/2"
Way number	Four		
Operating pressure range(MPa)	0~0.85		
Ambient temperature(°C)	-10~60		

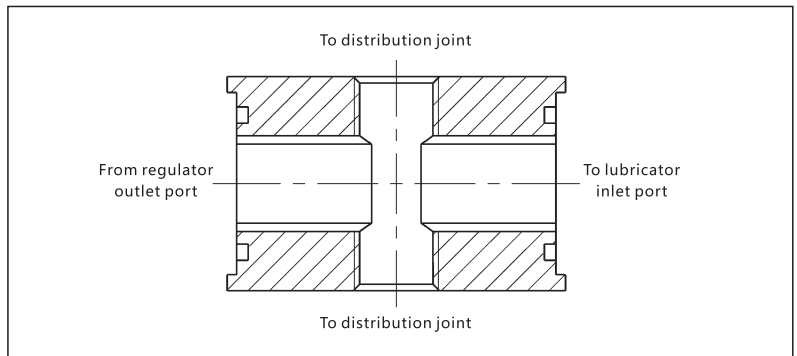
■ How to order:



■ Product feature:

- 1.It is installed between AC series regulator(or filter & regulator)and lubricator. The air flow is divided by the device that one enterslubricator which supply oil for lubrication and the other (the second way) directly enters the equipment.
- 2.Using T bracket ,it can be connected with regulator and lubricator.

■ Inner structure drawing:

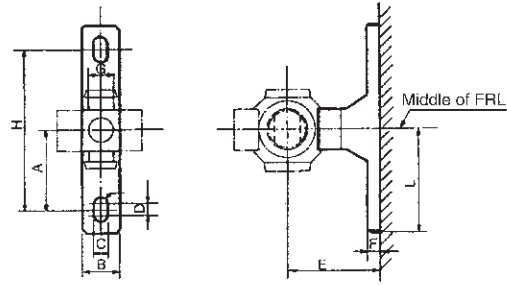
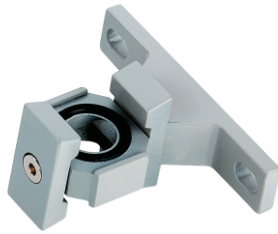


■ Dimension(mm):

Type	AG200		AG300		AG400	
	01	02	02	03	03	04
A	1/8"	1/4"	1/4"	3/8"	3/8"	1/2"
B	40		53		74	
C	42		50		70	
D	22		33.5		41.5	
E	27.5		29.5		36	

Bracket

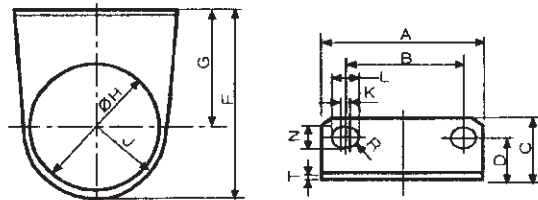
T type Bracket



Type	A	B	C	D	E	F	G	H	R	L	Applicable type
AC20T	24	15	5.5	3	30	5	10	48	2.75	33	AC200~AC201
AC30T	35	16	7	4	41	7	11	70	3.5	45	AC300~AC301
AC40T	40	22	9	4	50	7	14	80	4.5	50	AC400~AC401
AC50T	50	24	12	4	70	10	15	100	6.0	62.5	AC500~AC501

Y type Bracket

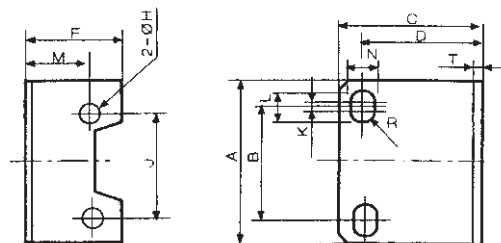
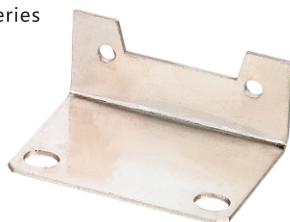
Appliesto AR, AWP Series



Type	A	B	C	D	F	G	H	J	K	L	N	R	T	Applicable type
AR20Y	50	35	20	12	50	36	30.5	15.3	2.3	8.7	5.4	3.2	2.3	AR/AW200
AR30Y	53	40	22	14	62	39	38.5	19.3	1.5	8	6.5	3.25	2.3	AR/AW300
AR40Y	70	54	27	18	75	49.2	42.5	21.3	2	10.5	8.5	4.25	2.3	AR/AW400
AR50Y	70	54	27	18	79.2	49.2	42.5	30	2	10.5	8.5	4.25	2.3	AR/AW500

J type Bracket

Appliesto AF, ALSeries



Type	A	B	C	D	F	H	J	K	L	M	N	R	T	Applicable type
AF20Y	40	27	33	27	18	4.5	26	3	8.4	14	5.4	2.7	2.3	AF/AL200
AF30Y	53	40	39	32	22.5	4.5	35	1.5	8	19	6.5	3.25	2.3	AF/AL300
AF40Y	70	54	47	38	31.5	5.5	47	2	10.5	20	8.5	4.25	2.3	AF/AL400
AF50Y	90	66	64	52	43	6.5	60	2	13	29	11	5.5	3.2	AF/AL500