

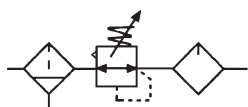
Filter+Regulator+Lubricator

Specification:

Type		AC200A-01, 02	AC300A-02, 03	AC400A-03, 04	AC500A-06, 08	AC600A-06, 08
Portsize(G)		1/8" · 1/4"	1/4" · 3/8"	3/8" · 1/2"	3/4" · 1"	3/4" · 1"
Gaugethread(G)		1/8"				
Fluid		Compressed air				
Operatingpressure(MPa)		0.15~0.85				
Max.Flowrate(L/min)		1000	2000	3500	5000	
Ambient temperature(°C)		-10~60				
Filterprecision		5μm or 40μm				
Oilrecommended		ISO VG32				
Cupmaterial		Polycarbonate				
Structure		Overflow type				
Optional	Guard cup	-	●	●	●	●
	Bracket	20T	30T	40T	50T	50T

Note1 : The guard cup of AC200A series can be optional. Note2 : Metal cups are optional.

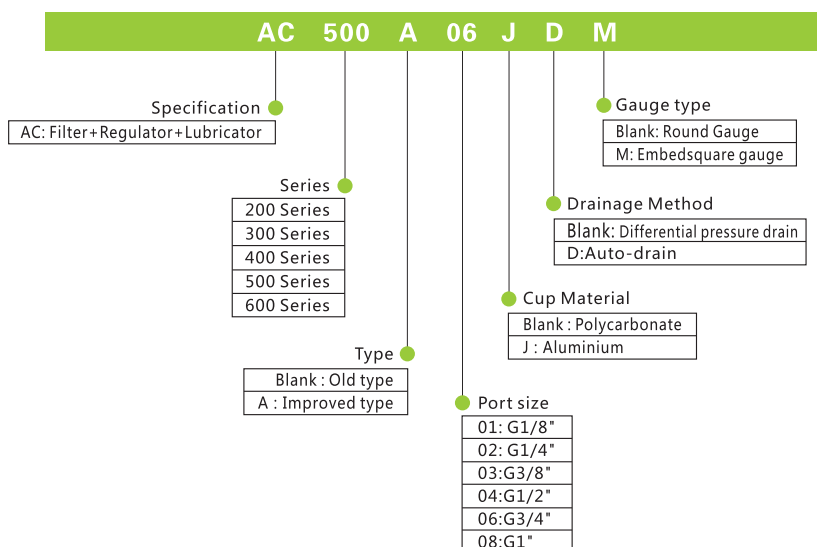
Symbol:



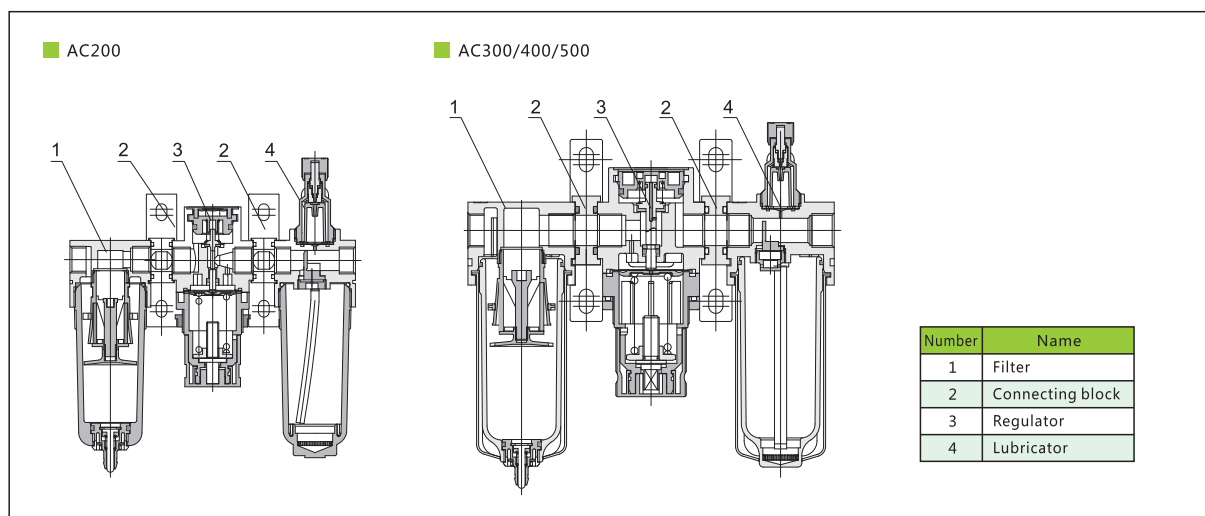
Product feature:

- 1.Oil dripping adopts the clearance seal to stabilize oil feeding.
- 2.Oil feeding is linear distribution and the quantity of oil is visible.
- 3.Fixed connection is fast reliable and easy for installation and using. Pressure adjust is stable and with high repeat precision.
- 4.High efficiency of removing water and solid particle.
- 5.Manual, differential pressure and automatic drain ways are optional.

How to order:



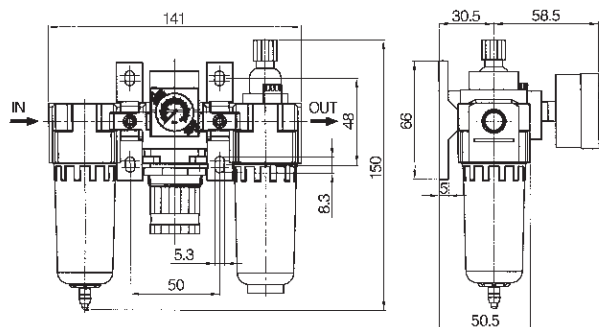
Inner structure drawing:



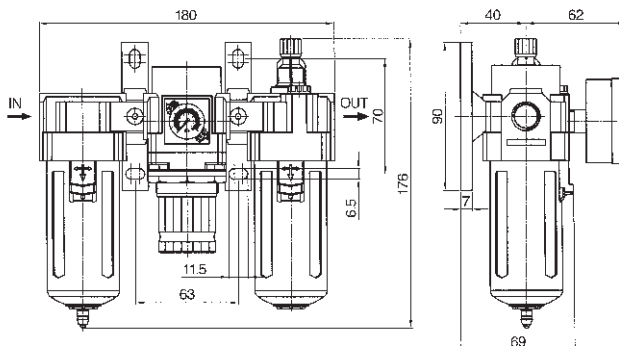
Filter+Regulator+Lubricator

■ Dimension(mm):

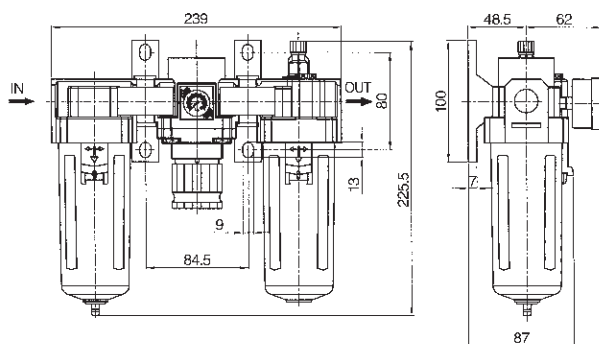
■ AC200A-01, 02



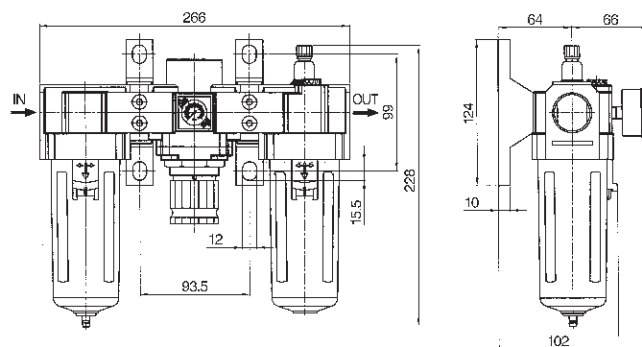
■ AC300A-02, 03



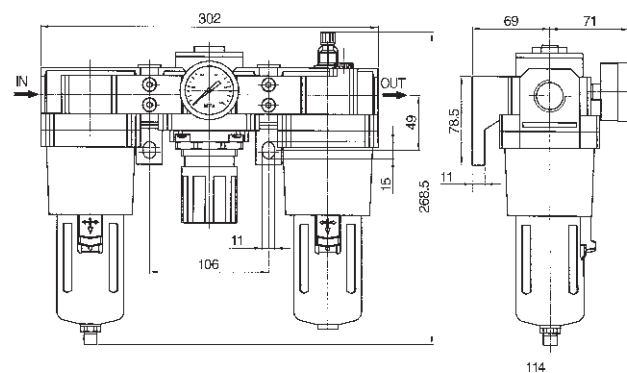
■ AC400A-03, 04



■ AC500A-06, 08



■ AC600A-06, 08



Filter Regulator+Lubricator

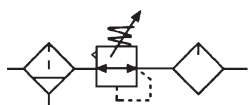


Specification:

Type		AC201A-01, 02	AC301A-02, 03	AC401A-03, 04	AC501A-06, 08	AC601A-06, 08
Port size(G)		1/8" · 1/4"	1/4" · 3/8"	3/8" · 1/2"	3/4" · 1"	3/4" · 1"
Gauge thread(G)		1/8"				
Fluid		Compressed air				
Operating pressure range(MPa)		0.15~0.85				
Max.Flowrate(L/min)		900	2000	3500	5000	
Ambient temperature(°C)		-10~60				
Filter precision		5μm or 40μm				
Oil recommended		ISO VG32				
Cup material		Polycarbonate				
Structure		Overflow type				
Optional	Guard cup	-	●	●	●	●
	Bracket	20T	30T	40T	50T	50T

Note1 : The guard cup of AC201A series can be optional. Note2 : Metal cups are optional.

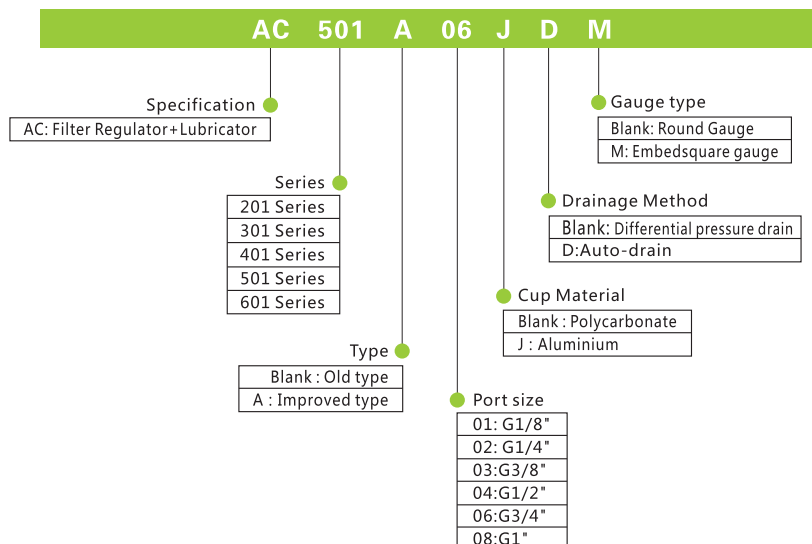
Symbol:



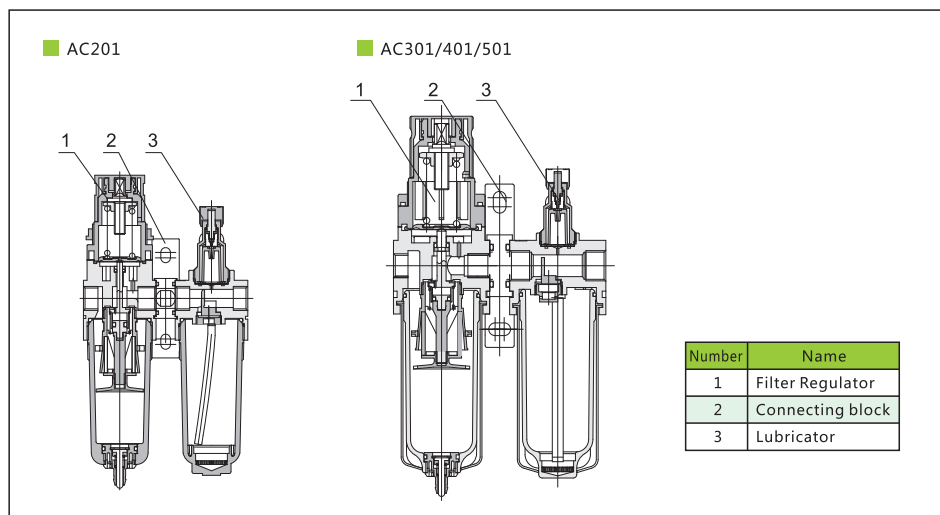
Product feature:

- 1.Oil dripping adopts the clearance seal to stabilize oil feeding.
- 2.Oil feeding is linear distribution and the quantity of oil is visible.
- 3.Fixed connection is fast reliable and easy for installation and using. Pressure adjust is stable and with high repeat precision.
- 4.High efficiency of removing water and solid particle.
- 5.Manual, differential pressure and automatic drain ways are optional.

How to order:



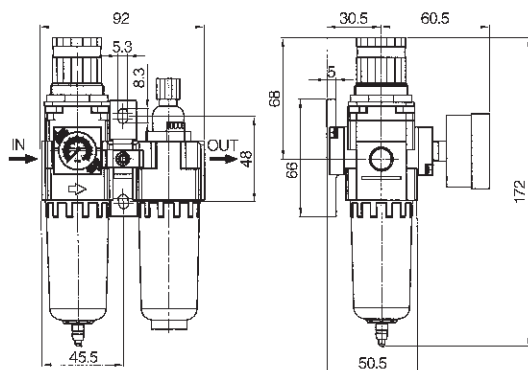
Inner structure drawing:



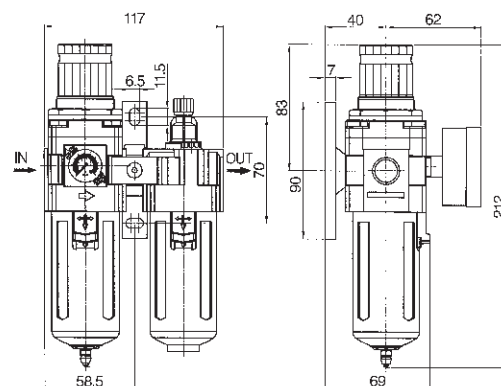
Filter Regulator+Lubricator

■ Dimension(mm):

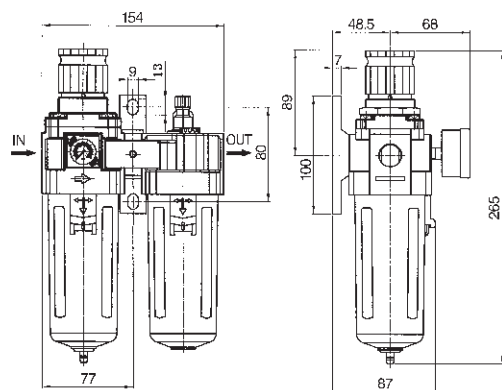
■ AC201A-01, 02



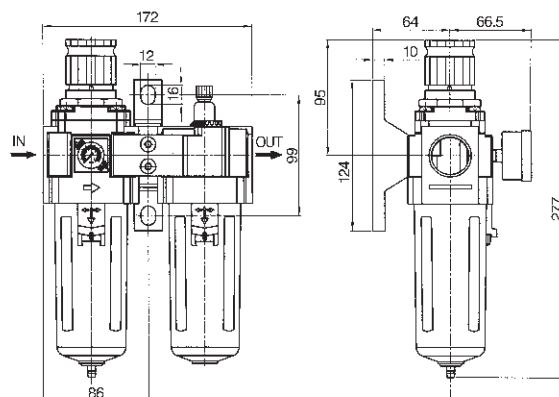
■ AC301A-02, 03



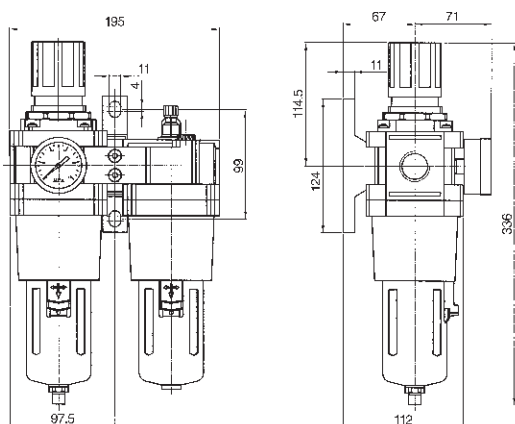
■ AC401A-03, 04



■ AC501A-06, 08



■ AC601A-06, 08



Filter Regulator



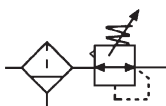
Specification:

Type	AW200A-01, 02	AW300A-02, 03	AW400A-03, 04	AW500A-06, 08	AW600A-06, 08
Port size(G)	1/8"・1/4"	1/4"・3/8"	3/8"・1/2"	3/4"・1"	3/4"・1"
Gauge thread(G)	1/8"				
Fluid	Compressed air				
Operating pressure range(MPa)	0.15~0.85				
Max.Flowrate(L/min)	900	2000	3500	5000	
Ambient temperature(°C)	-10~60				
Filter precision	5μm or 40μm				
Cup material	Polycarbonate				
Guard cup	-	●	●	●	●

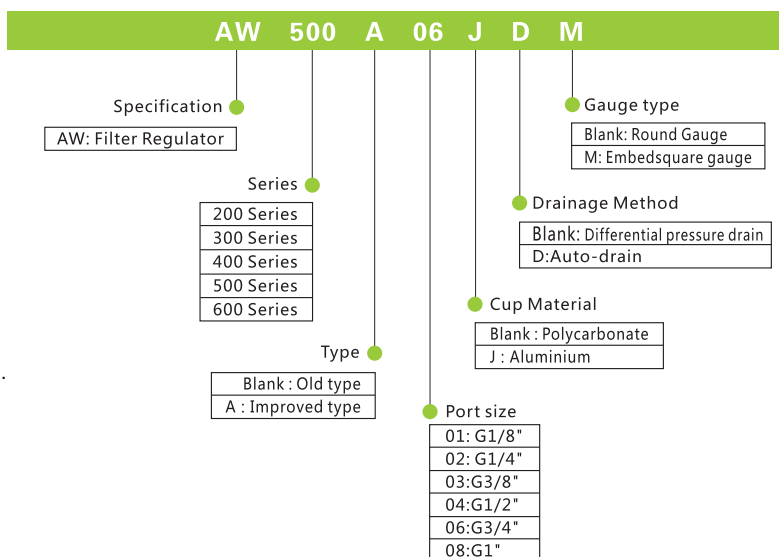
Note1 : The guard cup of AW200A series can be optional. Note2 : Metal cups are optional.



Symbol:



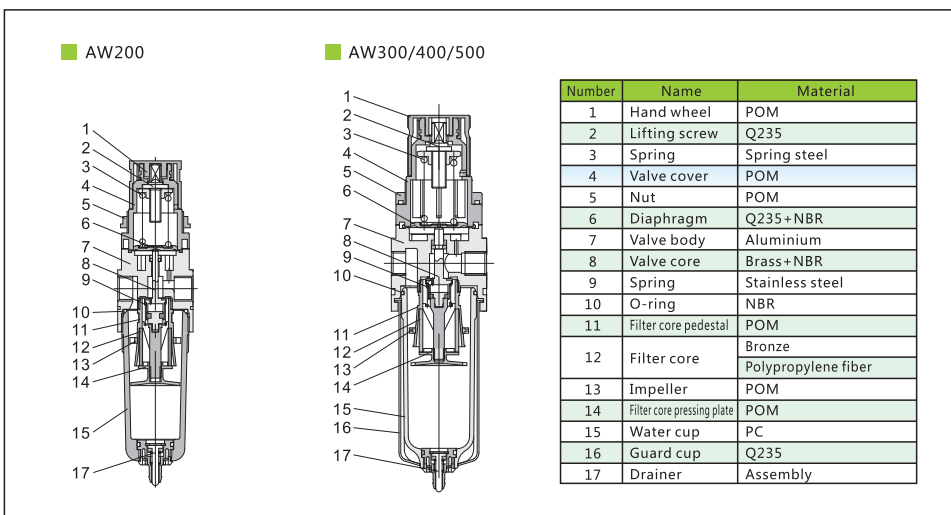
How to order:



Product feature:

- 1.Hand wheel adopts the pressed self-locking mechanism to prevent the setting pressure from external disturbance and unusual action.
- 2.Pressure adjustment mechanism adopts the balance design with more stable adjustment and better characteristic.
- 3.Special guide structure makes the flowing gases spin properly to separate the water from gas and filter solid particle efficiently.
- 4.Filter precision 5 or 40 μm is optional.
- 5.Manual, differential pressure and automatic drain ways are optional.

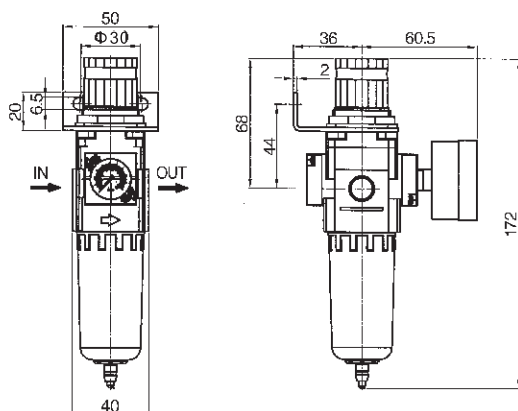
Inner structure drawing:



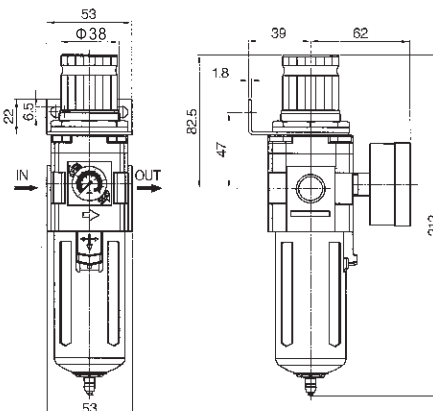
Filter Regulator

■ Dimension(mm):

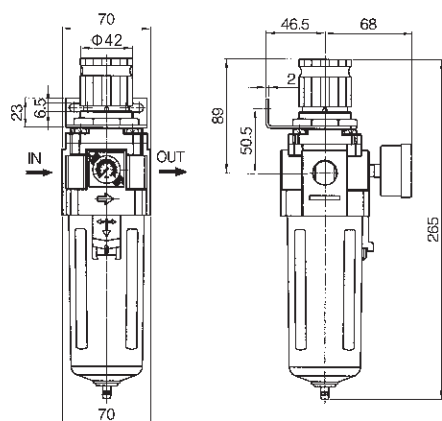
■ AW200A-01、02



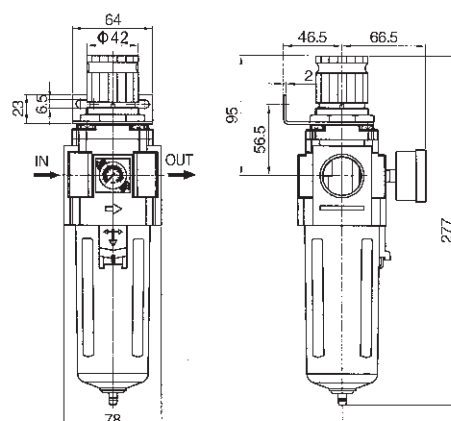
■ AW300A-02、03



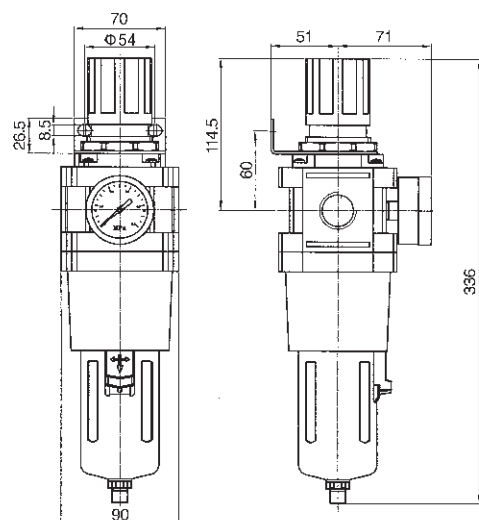
■ AW400A-03、04



■ AW500A-06、08



■ AW600A-06、08



AW

Filter



Specification:

Type	AF200A-01, 02	AF300A-02, 03	AF400A-03, 04	AF500A-06, 08	AF600A-06, 08
Port size(G)	1/8" · 1/4"	1/4" · 3/8"	3/8" · 1/2"	3/4" · 1"	3/4" · 1"
Fluid	Compressed air				
Operating pressure range(MPa)	0.15~0.85				
Max.Flowrate(L/min)	1200	2000	3500	5000	
Ambient temperature(°C)	-10~60				
Filter precision	5µm or 40µm				
Cup material	Polycarbonate				
Guard cup	-	●	●	●	●

Note1 : The guard cup of AF200A series can be optional. Note2 : Metal cups are optional.

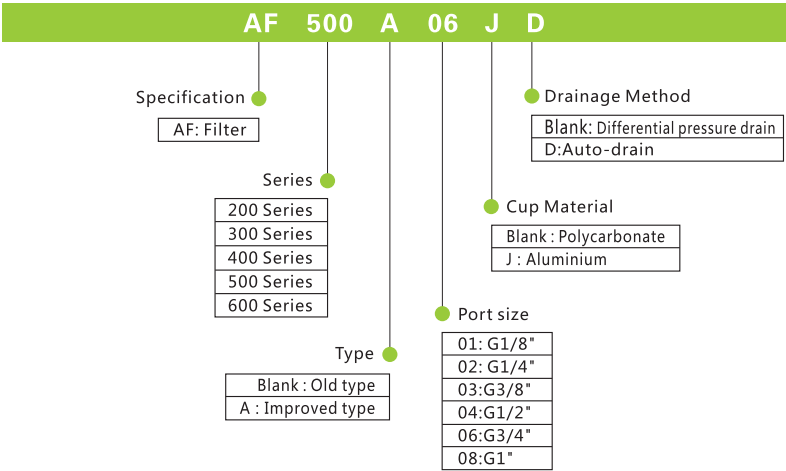
Symbol:



Product feature:

- 1.Special guide structure makes the flowing gases spin properly to separate the water from gas and filter solid particle efficiently.
- 2.Low pressure loss and high division efficiency.
- 3.Filter precision 5 or 40 µ m is optional.
- 4.Manual, differential pressure and automatic drain ways are optional.

How to order:



Inner structure drawing:

AF200

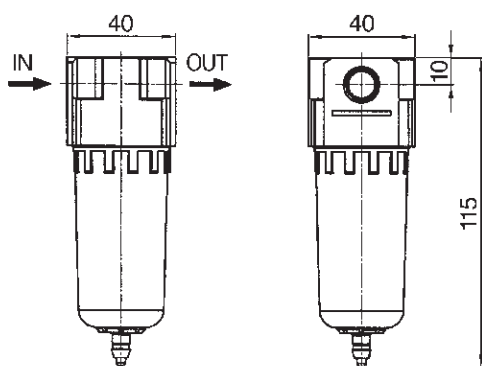
AF300/400/500

Number	Name	Material
1	Regulate body	Aluminium
2	O-ring	NBR
3	Filter core pedestal	POM
4	Filter core	Bronze
		Polypropylene fiber
5	Impeller	POM
6	Filter core pressing plate	POM
7	Water cup	PC
8	Guard cup	Cold rolled plate
9	Drainer	Assembly

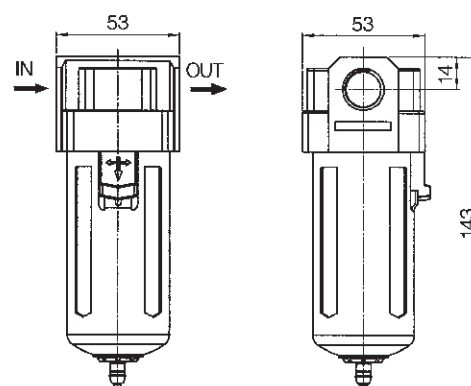
Filter

■ Dimension(mm):

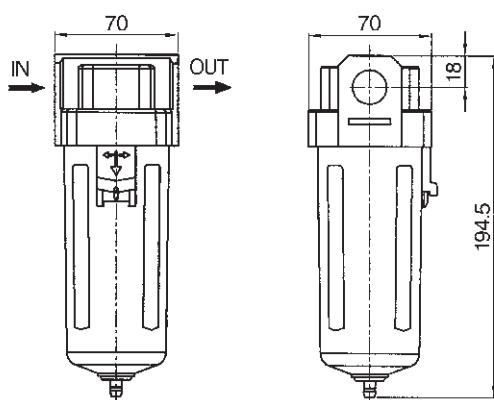
■ AF200A-01、02



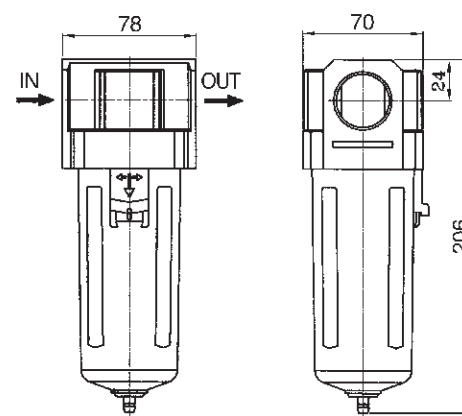
■ AF300A-02、03



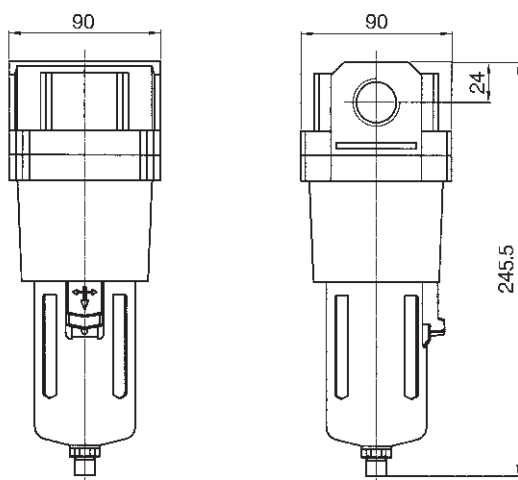
■ AF400A-03、04



■ AF500A-06、08



■ AF600A-06、08



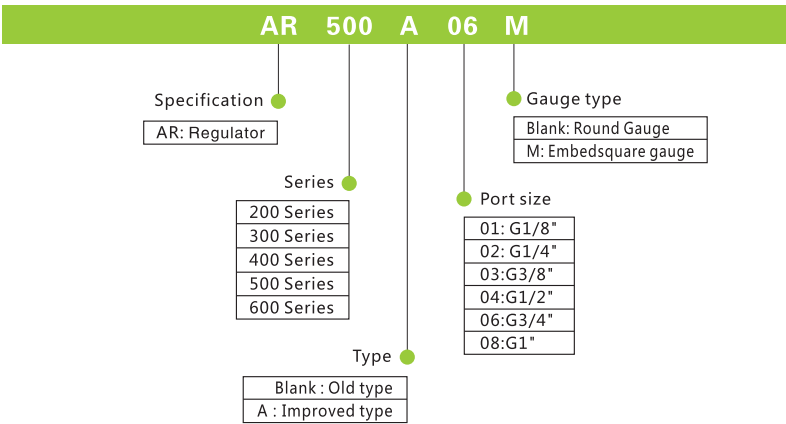
Regulator



Specification:

Type	AR200A-01, 02	AR300A-02, 03	AR400A-03, 04	AR500A-06, 08	AR600A-06, 08
Port size(G)	1/8" · 1/4"	1/4" · 3/8"	3/8" · 1/2"	3/4" · 1"	3/4" · 1"
Gauge thread(G)	1/8"				
Fluid	Compressed air				
Operating pressure range(MPa)	0.15~0.85				
Max.Flowrate(L/min)	1000	2000	3500	5000	
Ambient temperature(°C)	-10~60				

How to order:



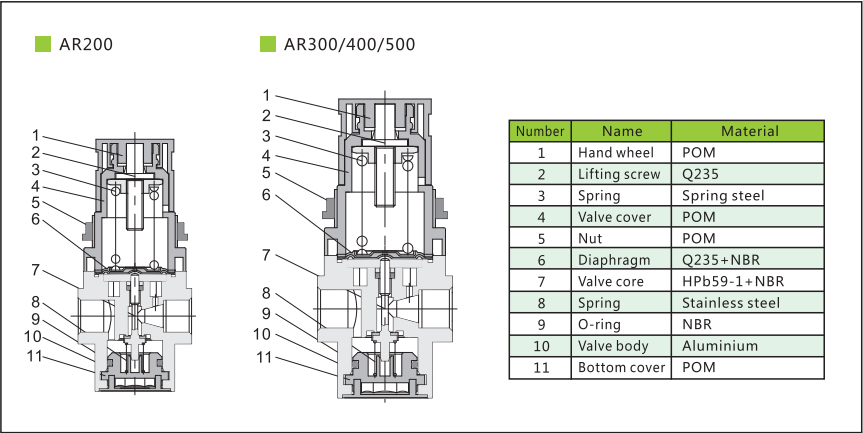
Symbol:



Product feature:

- 1.Hand wheel adopts the pressed self-locking mechanism to prevent the setting pressure from external disturbance and unusual action.
- 2.Pressure adjustment mechanism adopts the balance design with more stable adjustment and better characteristic.
- 3.Besides panel-mounting, fixed bracket installation is optional.

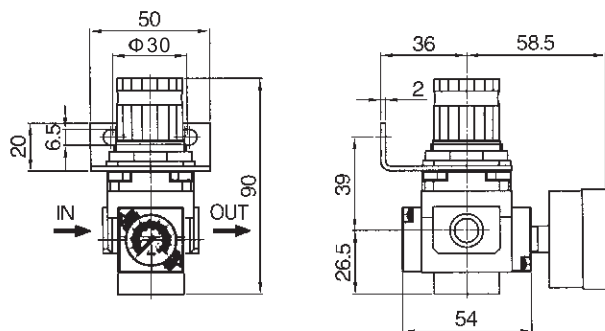
Inner structure drawing:



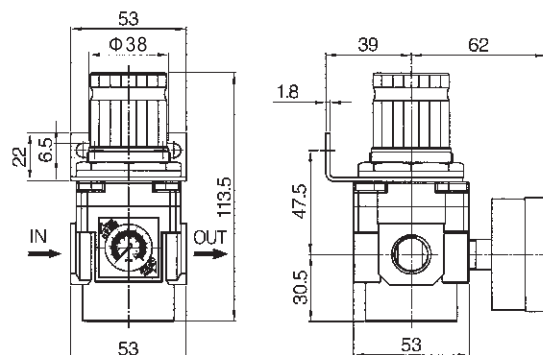
Regulator

■ Dimension(mm):

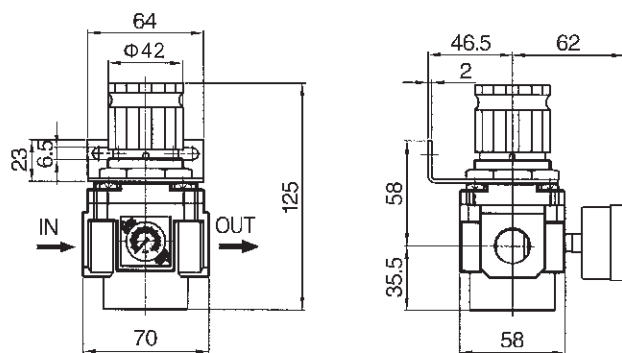
■ AR200A-01, 02



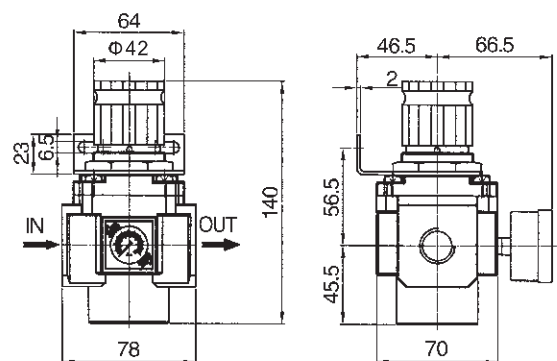
■ AR300A-02, 03



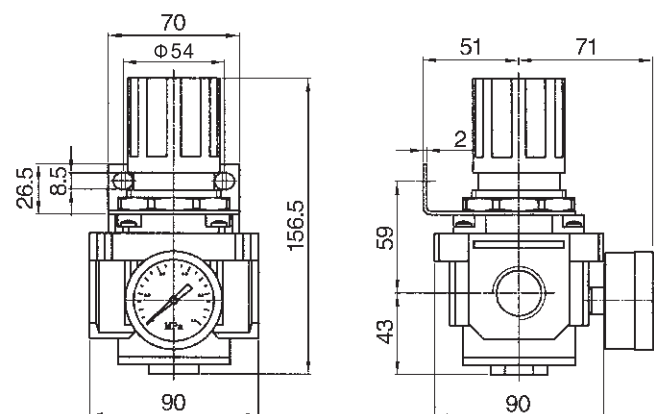
■ AR400A-03, 04



■ AR500A-06, 08



■ AR600A-06, 08



Lubricator



Specification:

Type	AL200A-01, 02	AL300A-02, 03	AL400A-03, 04	AL500A-06, 08	AL600A-06, 08
Port size G	1/8" · 1/4"	1/4" · 3/8"	3/8" · 1/2"	3/4" · 1"	3/4" · 1"
Fluid	Compressed air				
Operating pressure range(MPa)	0.15~0.85				
Max.Flowrate(L/min)	1200	2000	3500	5000	
Ambient temperature(°C)	-10~60				
Filter precision	ISO VG32				
Cup material	Polycarbonate				
Guard cup	-	●	●	●	●

Note1 : The guard cup of AL200A series can be optional. Note2 : Metal cups are optional.

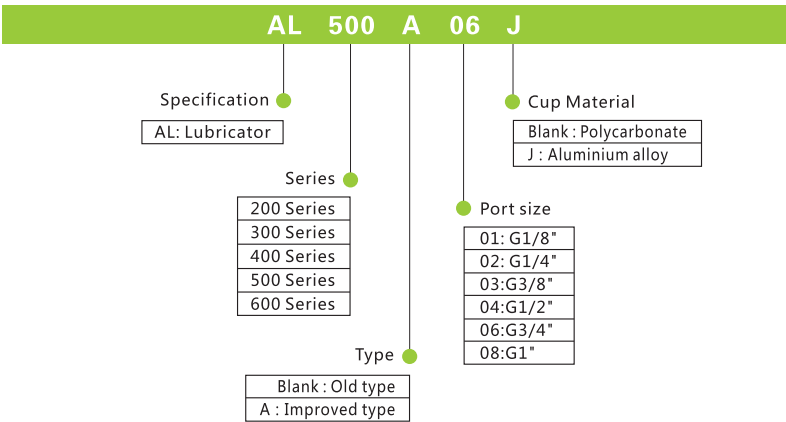
Symbol:



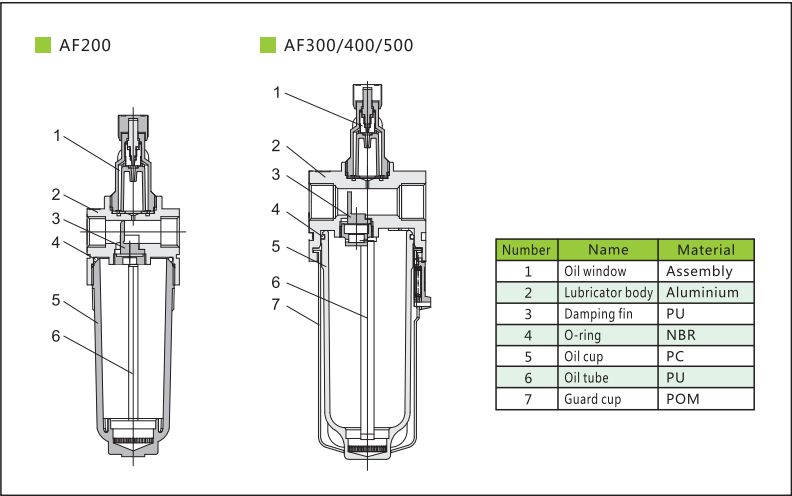
Product feature:

- 1.Oil dripping adopts the clearance seal to stabilize oil feeding.
- 2.Oil feeding is linear distribution and the quantity of oil is visible.
- 3.Special oil dripping structure leads to negative pressure at the exit of oil dripping and low fog flow.
- 4.Fixed bracket installation is optional.

How to order:



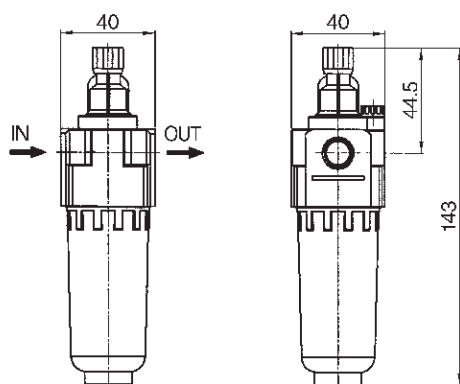
Inner structure drawing:



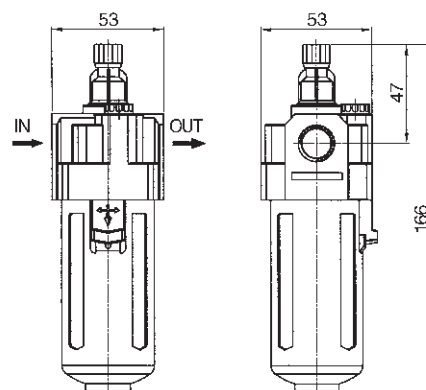
Lubricator

■ Dimension(mm):

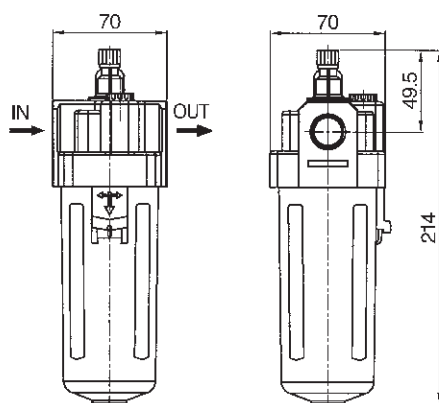
■ AL200A-01、02



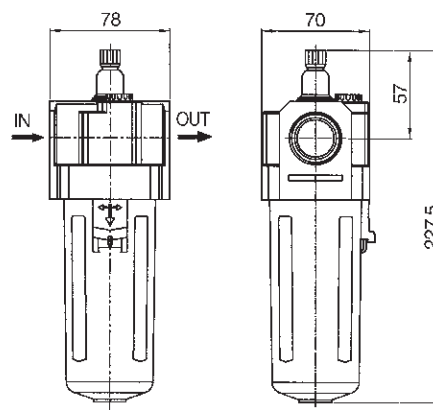
■ AL300A-02、03



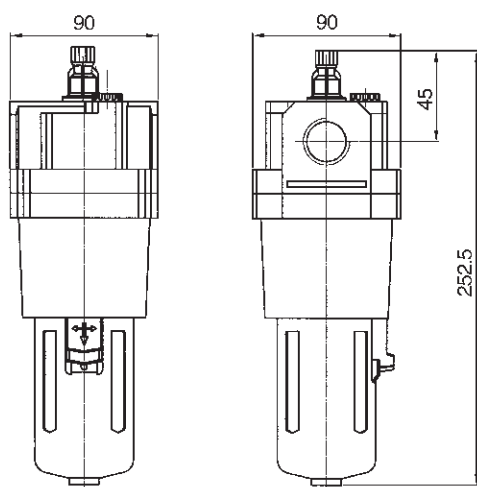
■ AL400A-03、04



■ AL500A-06、08



■ AL600A-06、08



AL