

Solenoid Valve/Air Control Valve

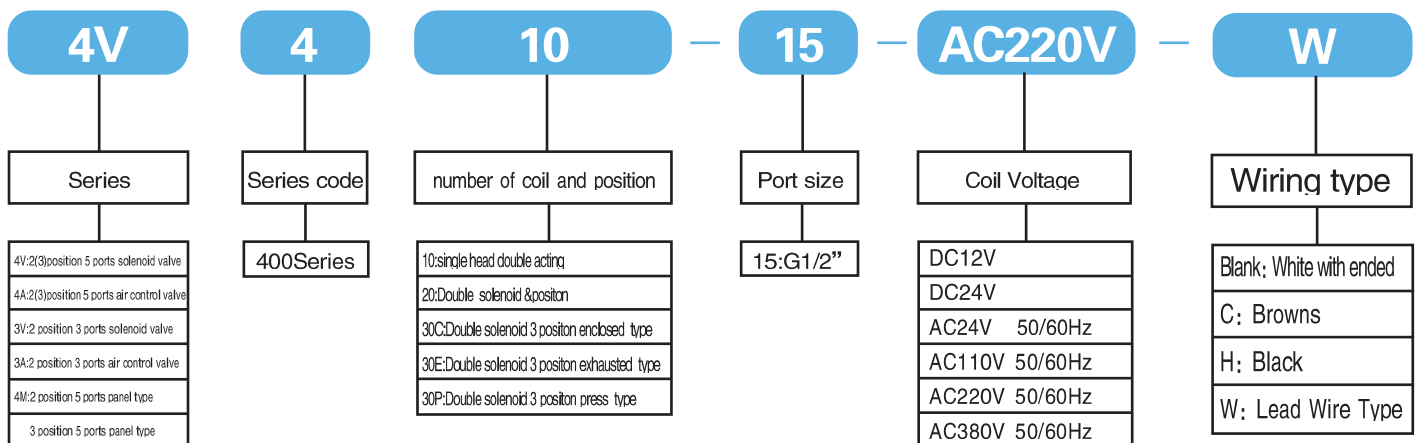
Characteristics:

- Service life: 10 million cycle times.
- The bodies are mirror finished and hardening treated.
- Equipped with imported oil seals with smaller friction and longer service life.
- With imported coils, low power consumption, speedy response.
- Capable of long service time without being damaged.

Specification:

Type	4V410-15	4V420-15	4V430C-15	4V430E-15	4V430P-15
	4A410-15	4A420-15	4A430C-15	4A430E-15	4A430P-15
Position number	Two Position Five Way		Three Position Five Way		
Effective sectional area	25mm ² (CV=1.40)		30mm ² (CV=1.68)		
Type	3V410-15	3V420-15	3A410-15	3A420-15	
Position number	Two Position Three Way				
Effective sectional area	50mm ² (CV=2.79)				
Port size	input=output=exhausted=G1/2"				
Fluid	Air				
Acting type	Internally pilot-actuated				
Working pressure MPa	0.15-0.8				
Ambient temperature °C	-5~50				
Voltage range	± 10%				
Power consumption	AC:5.5VA DC:4.8W				
Insolation & Protection level	Grade F. IP65				
Wiring Form	Out wire or end type				
Max. Fluence	5 times/minute				

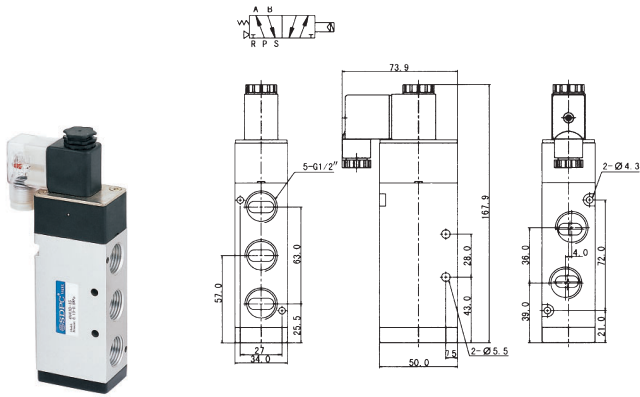
How to order:



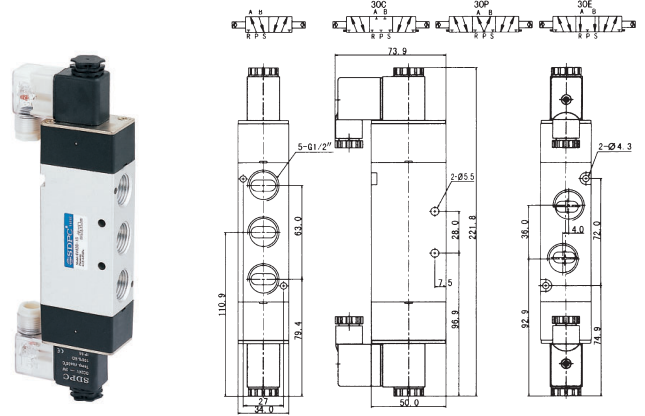
Solenoid Valve/Air Control Valve

Dimensions:

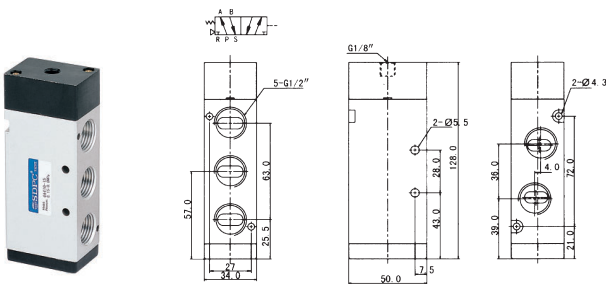
4V410-15



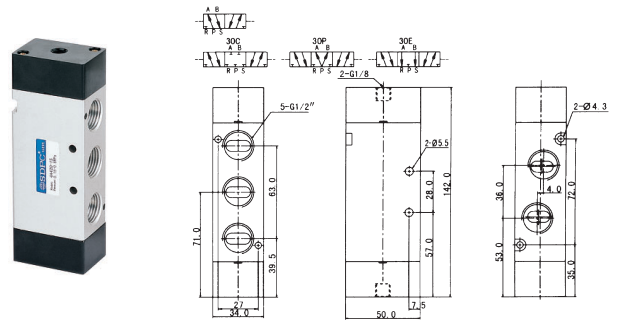
4V420-15, 4V430-15



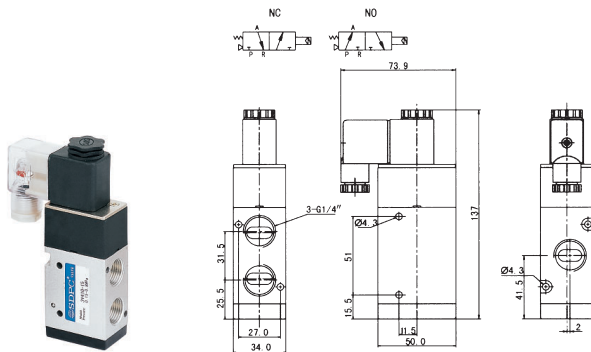
4A410-15



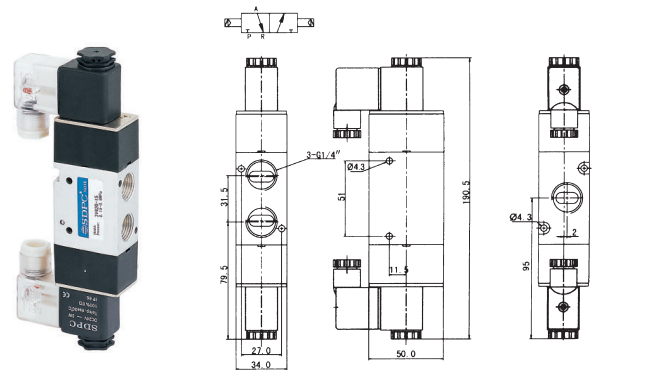
4A420-15, 4A430-15



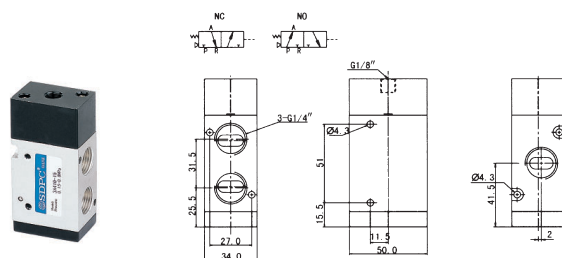
3V410-15



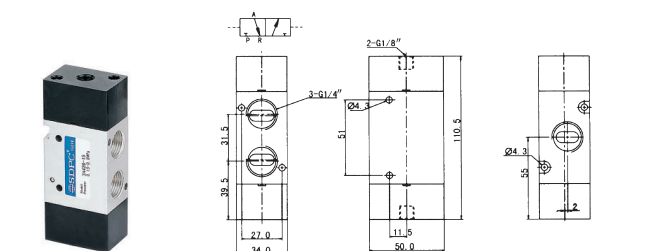
3V420-15



3A410-15



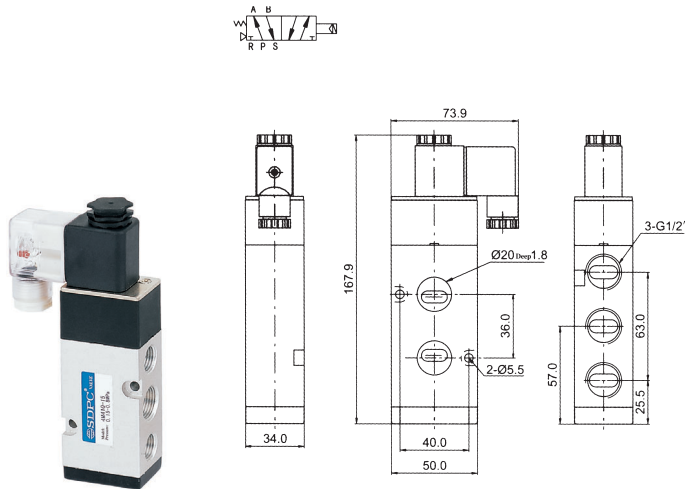
3A420-15



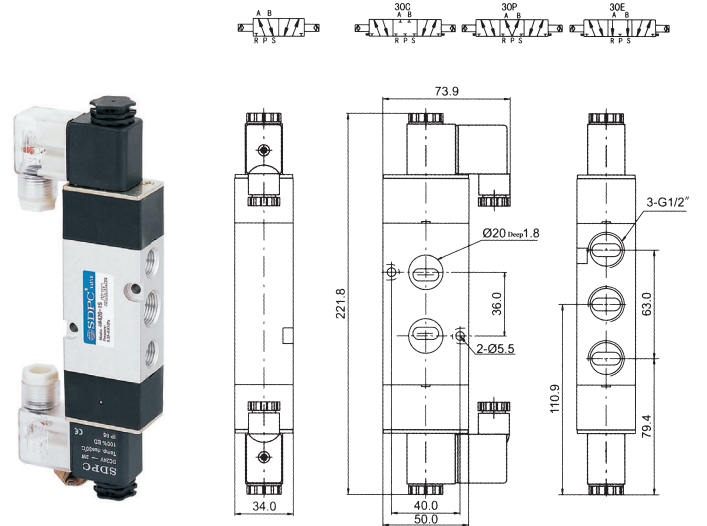
Solenoid Valve/Air Control Valve

Dimensions:

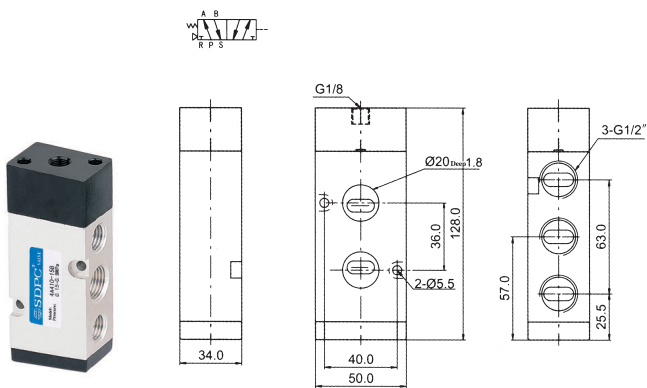
4M410-15



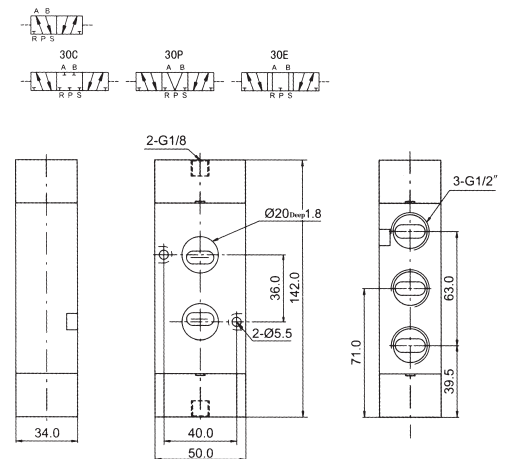
4M420-15, 4M430-15



4A410-15B

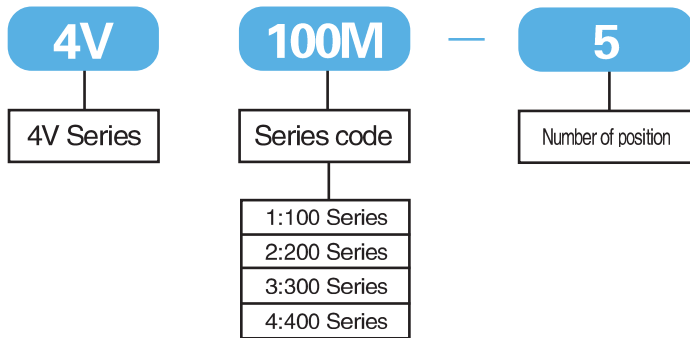


4A420-15B, 4A430-15B

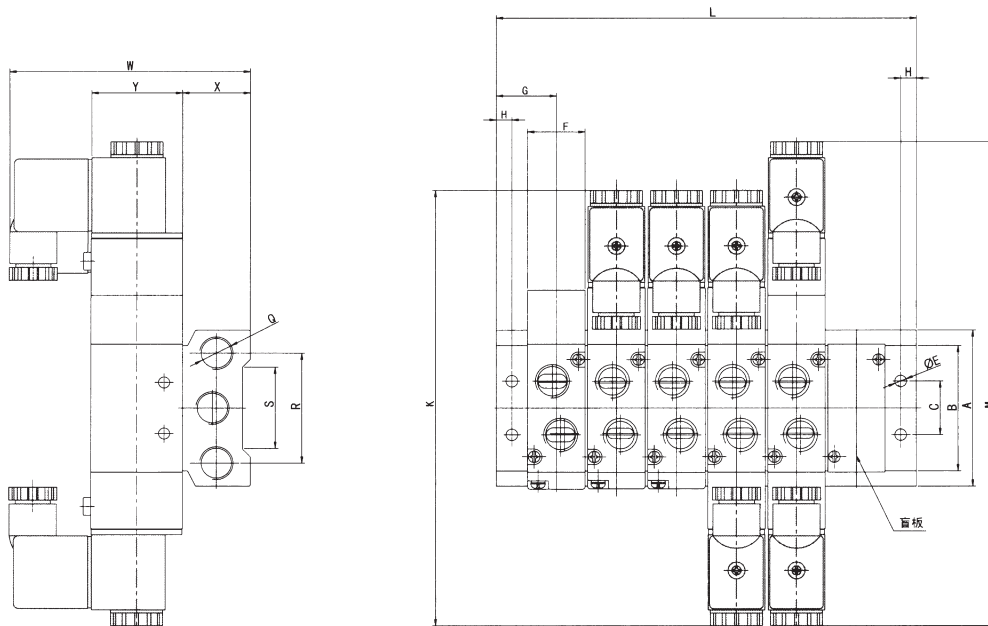


Manifold

How to order:



Dimensions(mm):



Type	A	B	C	E	F	G	H	K	L	M	Q	R	S	W	X	Y
100M□F	58	44	20	4.2	18.3	19	5	140	$(n-1)*19+38$	155	G1/4	40	30	78.5	25	27
200M□F	61	52	21	4.3	22.4	23	6	170	$(n-1)*23+46$	189	G1/4	43	32	92.5	26	35
300M□F	75	65	26	4.5	27.3	27	6	189	$(n-1)*28+54$	208	G3/8	53	48	99	30	40
400M□F	104	95	32	5.5	34.3	31.5	7	222	$(n-1)*35+63$	243	G1/2	68	67	112	38	50