

Solenoid Valve/Air Control Valve

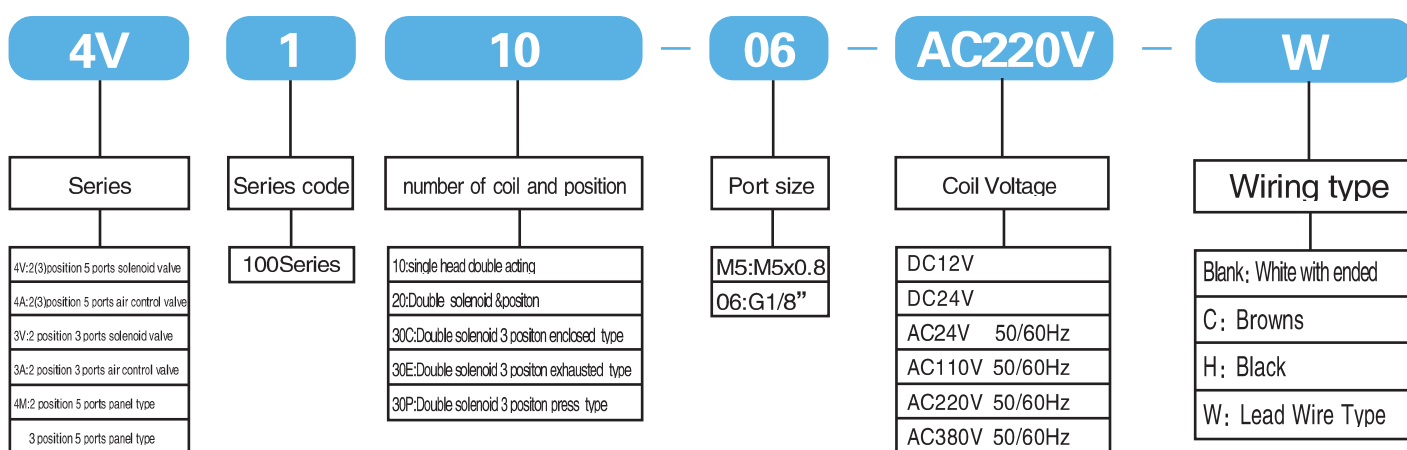
Characteristics:

- Service life: 10 million cycle times.
- The bodies are mirror finished and hardening treated.
- Equipped with imported oil seals with smaller friction and longer service life.
- With imported coils, low power consumption, speedy response.
- Capable of long service time without being damaged.

Specification:

Type	4V110-M5	4V120-M5	4V130C-M5	4V130E-M5	4V130P-M5	4V110-06	4V120-06	4V130C-06	4V130E-06	4V130P-06
	4A110-M5	4A120-M5	4A130C-M5	4A130E-M5	4A130P-M5	4A110-06	4A120-06	4A130C-06	4A130E-06	4A130P-06
Position number	Two Position Five Way		Three Position Five Way			Two Position Five Way		Three Position Five Way		
Effective sectional area	10mm ² (CV=0.56)		7mm ² (CV=0.40)			12mm ² (CV=0.67)		9mm ² (CV=0.50)		
Type	3V110-M5	3V120-M5	3A110-M5	3A120-M5		3V110-06	3V120-06	3A110-06	3A120-06	
Position number	Two Position Three Way					Two Position Three Way				
Effective sectional area	10mm ² (CV=0.56)					12mm ² (CV=0.67)				
Port size	input=output=exhausted=M5 × 0.8					input=output=exhausted=G1/8"				
Fluid	Air									
Acting type	Internally pilot-actuated									
Working pressure MPa	0.15~0.8									
Ambient temperature °C	-5~50									
Voltage range	± 10%									
Power consumption	AC:2.5VA DC:2.5W									
Insulation & Protection level	Grade F, IP65									
Wiring Form	Out wire or end type									
Max. Fluence	5 times/minute									

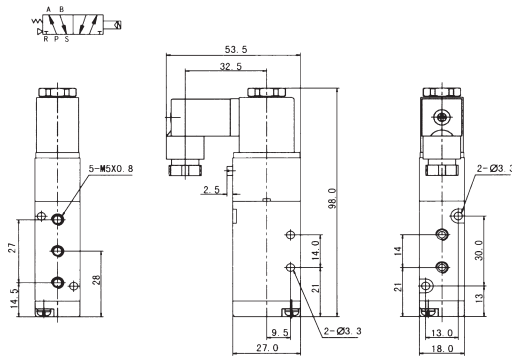
How to order:



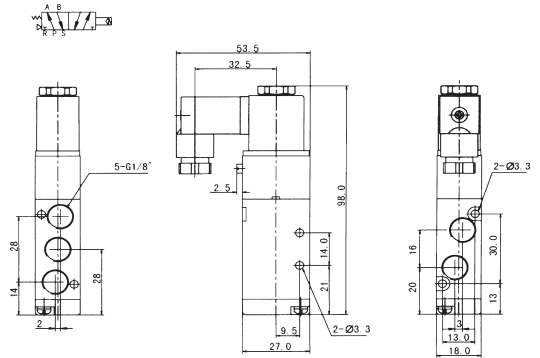
Solenoid Valve/Air Control Valve

Dimensions:

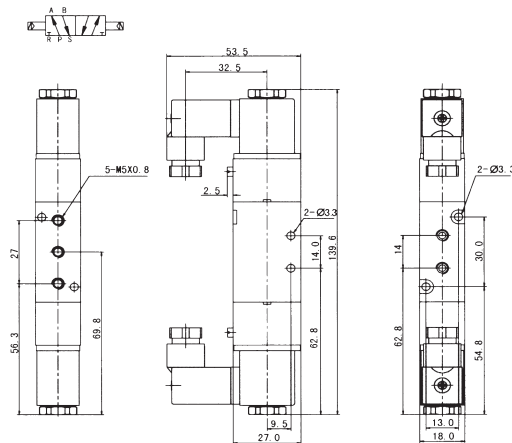
■ 4V110-M5



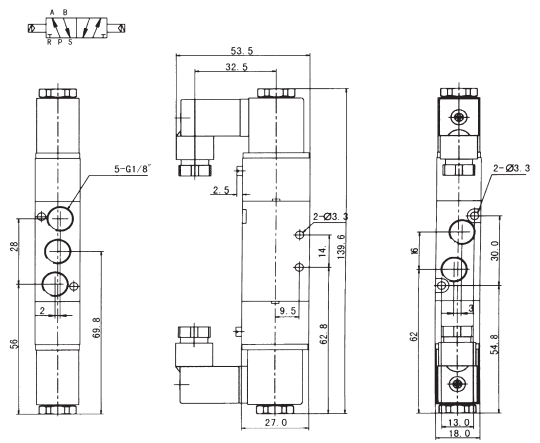
■ 4V110-06



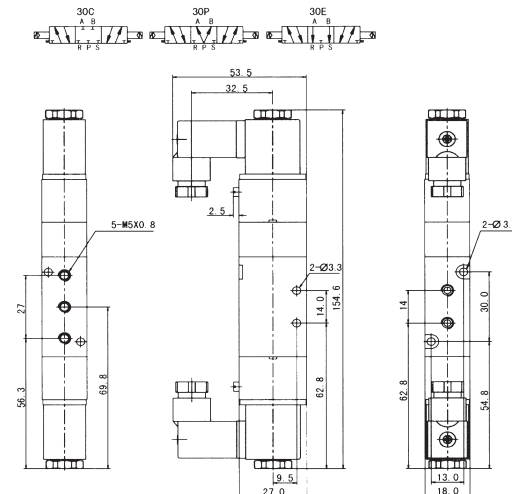
■ 4V120-M5



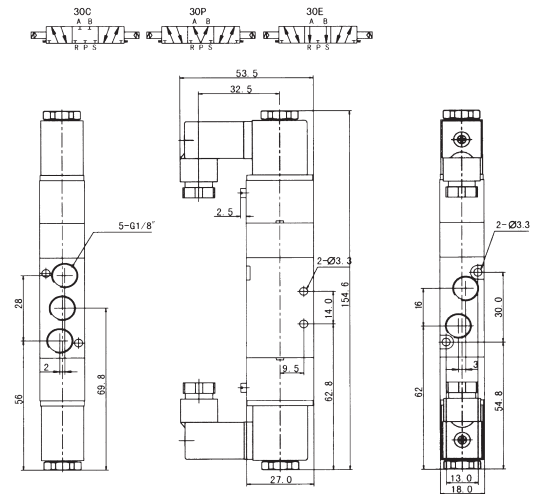
■ 4V120-06



■ 4V130-M5



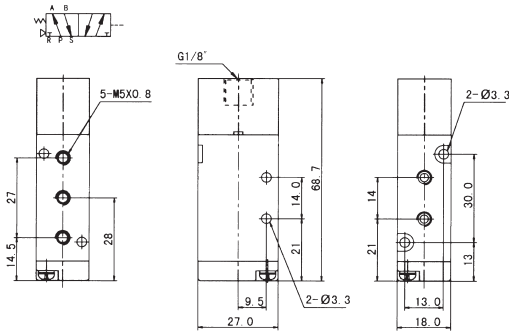
■ 4V130-06



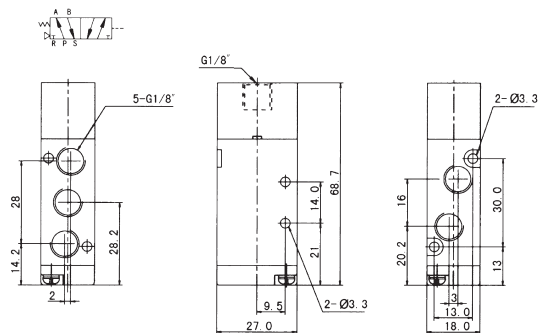
Solenoid Valve/Air Control Valve

Dimensions:

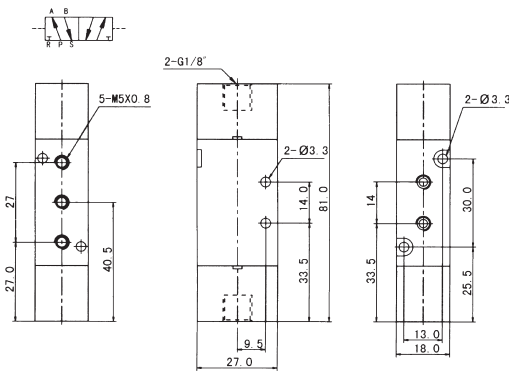
4A110-M5



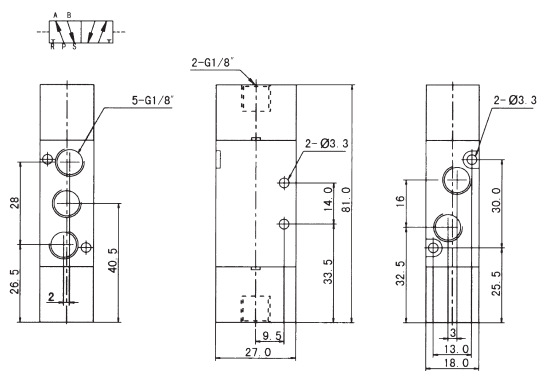
4A110-06



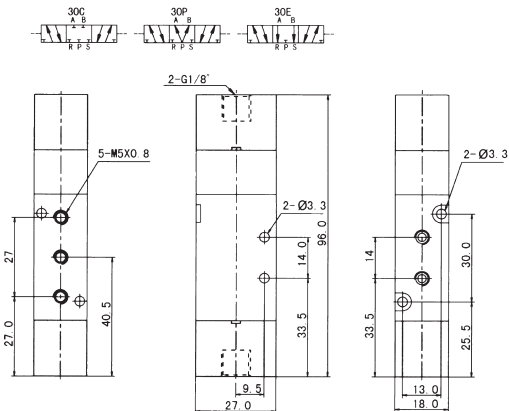
4A120-M5



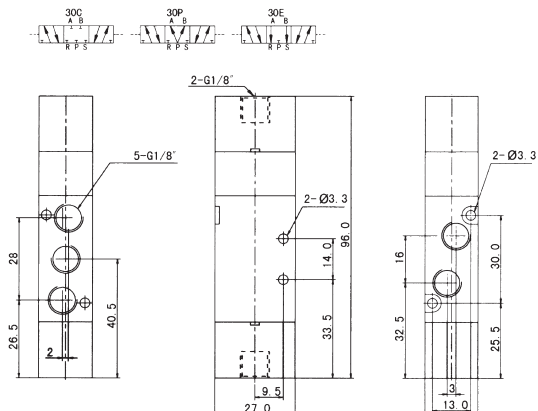
4A120-06



4A130-M5



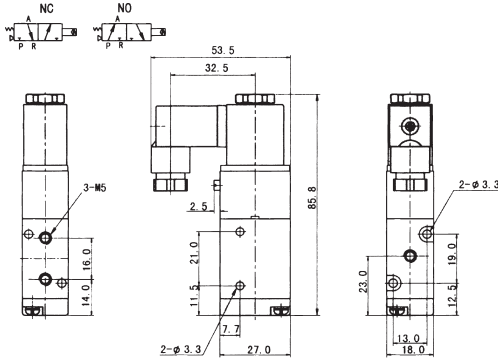
4A130-06



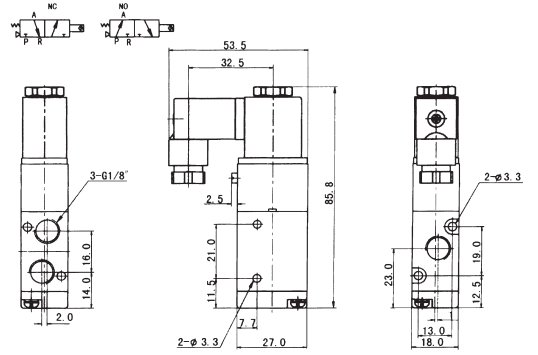
Solenoid Valve/Air Control Valve

Dimensions:

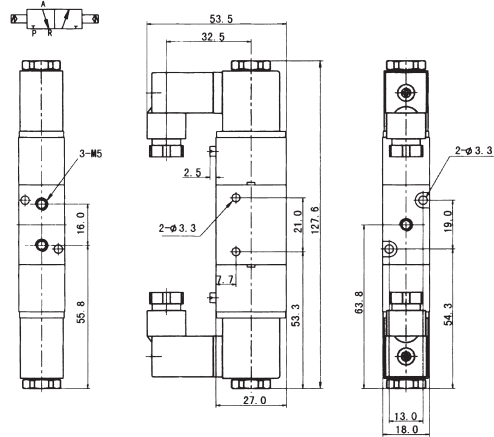
3V110-M5



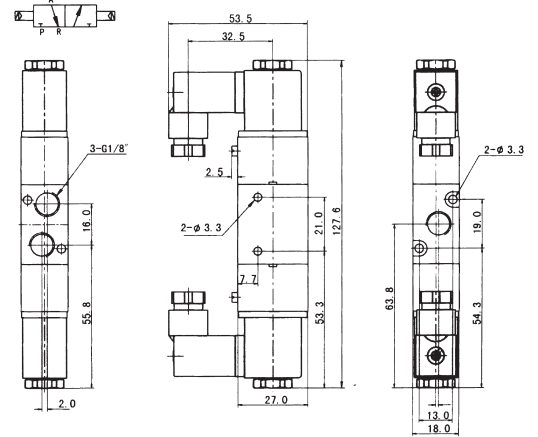
3V110-06



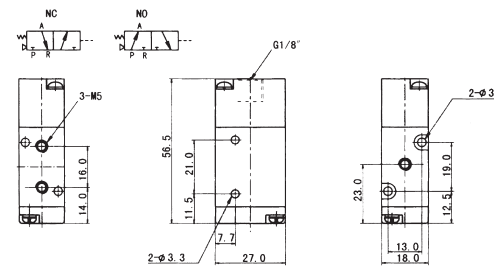
3V120-M5



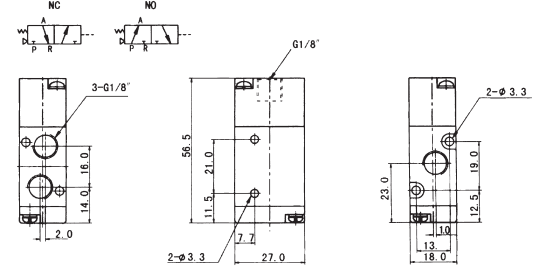
3V120-06



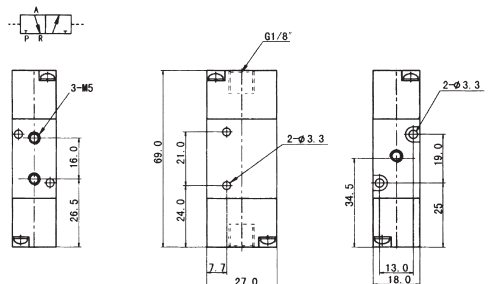
3A110-M5



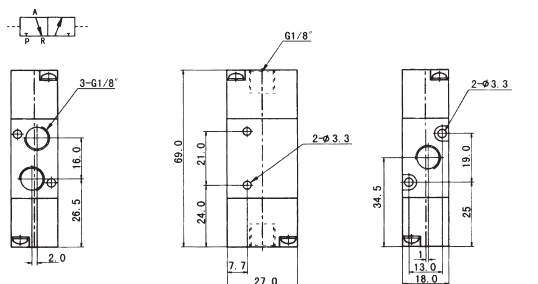
3A110-06



3A120-M5

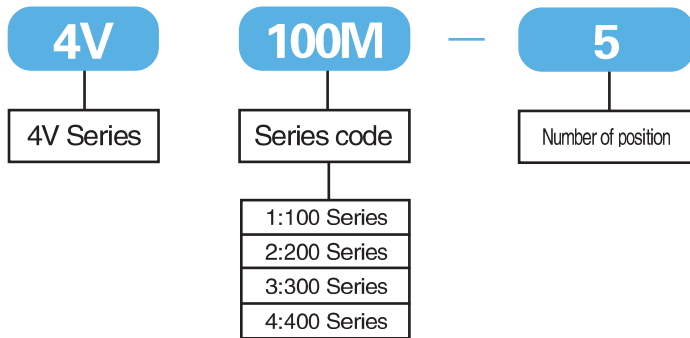


3A120-06

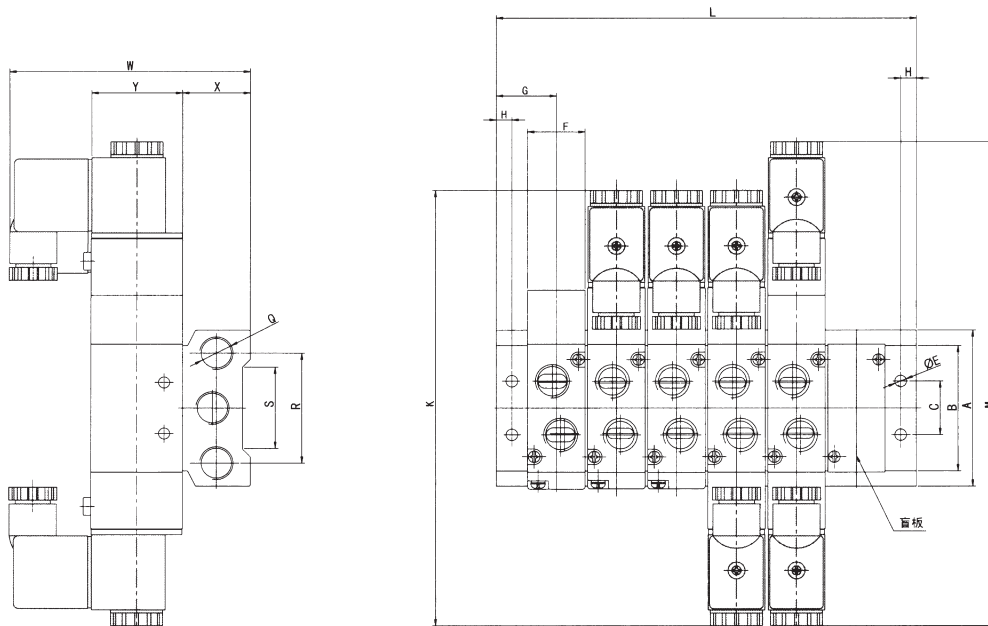


Manifold

How to order:



Dimensions(mm):



Type	A	B	C	E	F	G	H	K	L	M	Q	R	S	W	X	Y
100M□F	58	44	20	4.2	18.3	19	5	140	$(n-1)*19+38$	155	G1/4	40	30	78.5	25	27
200M□F	61	52	21	4.3	22.4	23	6	170	$(n-1)*23+46$	189	G1/4	43	32	92.5	26	35
300M□F	75	65	26	4.5	27.3	27	6	189	$(n-1)*28+54$	208	G3/8	53	48	99	30	40
400M□F	104	95	32	5.5	34.3	31.5	7	222	$(n-1)*35+63$	243	G1/2	68	67	112	38	50