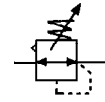


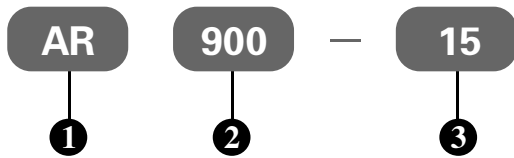
Regulator

Specification:

Type	AR900-15	AR900-20
Port size G	1 ¹ / ₂ "	2"
Gauge thread G	1/4"	
Fluid	Compressed Air	
Operating pressure range MPa	0.15~0.85	
Ambient temperature °C	-10~60	



How to order:



①	AR Regulator
②	Type: 900
③	Port size: 15:G1 ¹ / ₂ ", 20:G2"

Dimension(mm):

■ AR900-15、20

