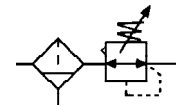


## Filter Regulator

### Specification:

Type	AFR900-15	AFR900-20
Port size G	1½"	2"
Gauge thread G	1/4"	
Fluid	Compressed Air	
Operating pressure range MPa	0.15~0.85	
Ambient temperature °C	-10~60	
Filter precision	Standard: 20 μ m	
Cup material	Die-casting Aluminum	



### How to order:



①	AFR Filter Regulator
②	Type: 900
③	Port size: 15:G1½", 20:G2"
④	□: Differential pressure drain, D: Auto-drain;

### Dimension(mm):

■ AFR900-15、20

