

Mini Cylinder

## Character:

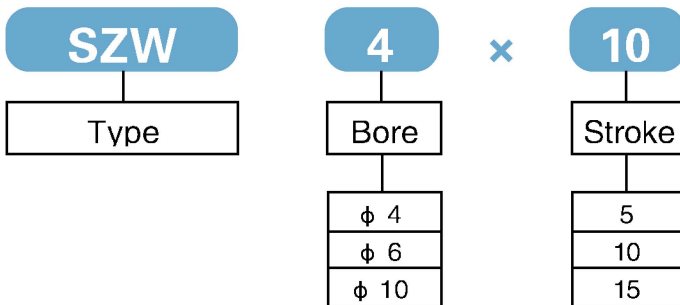
- Adopt Stainless steel tube, light, precise, friction & corrosion durable.
- Use imported non-lubrication oil seal, fits for high speed movement.
- Tube and covers made by roll extrusion.
- Unique design and assembly warrant its in line.



## Specification:

Mode	4	6	10
Motion	Single acting type		
Fluit	Air		
Series	SZW		
Operating pressure range(Mpa)	0.15~0.7		
Operating speedmm/sec	50~500		
Ambient temperature(°C)	-10~70		
Port size	M5		

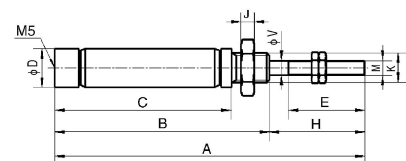
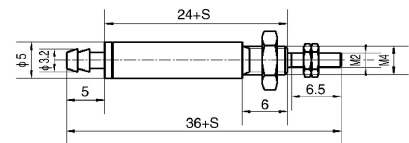
## How to order:



## Dimension:

**SZW4 × Stroke(5、10MM)**

**SZW6~10 × Stroke(5、10、15MM)**



Specifiction	A	B	C	D	E	H	J	K	M	V
SZW6X10	65	45	37	8	16	20	4.5	M6	M3	3
SZW6X15	70	50	42	8	16	20	4.5	M6	M3	3
SZW10X10	74	54	46	11	15	20	3	M8X1	M4	4
SZW10X15	79	59	51	11	15	20	3	M8X1	M4	4