

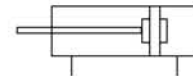
Round line Cylinder

Character:

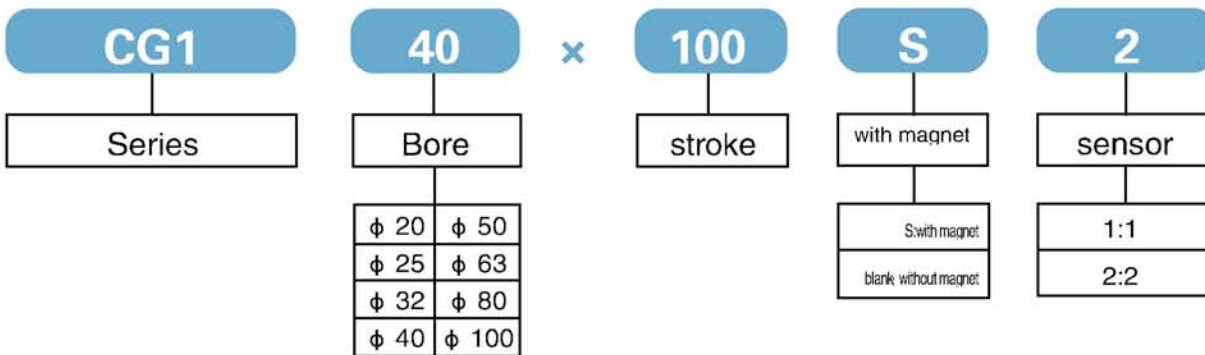
- CNC mechanically processed with high precision. Quality meet international standard.
- Adopt imported none lubrication, long time service and no need lubrication maintenance
- Unique cushion technique makes smooth action.
- May add the sensor equipment to easily control.

Specification:

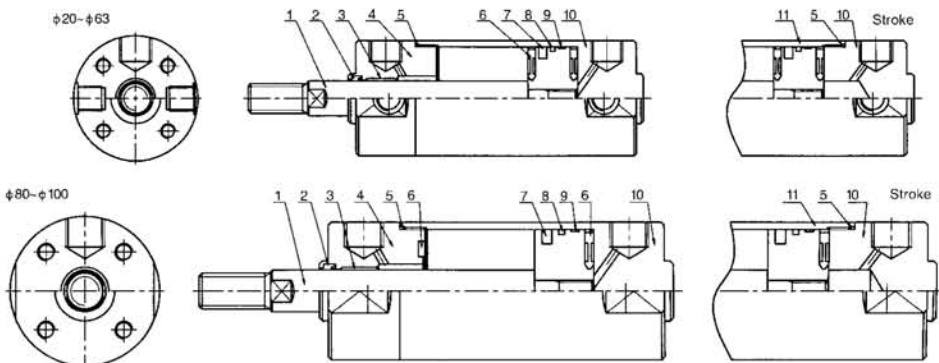
Mode	20	25	32	40	50	63	80	100
Motion	Double acting							
Series	CG1							
Fluid	Air							
Operating pressure range(Mpa)	0.05~1							
Operating speed(mm/sec)	50~1000				50~700			
Ambient temperature(°C)								
Portsize	1/8"		1/4"		3/8"		1/2"	



How to order:

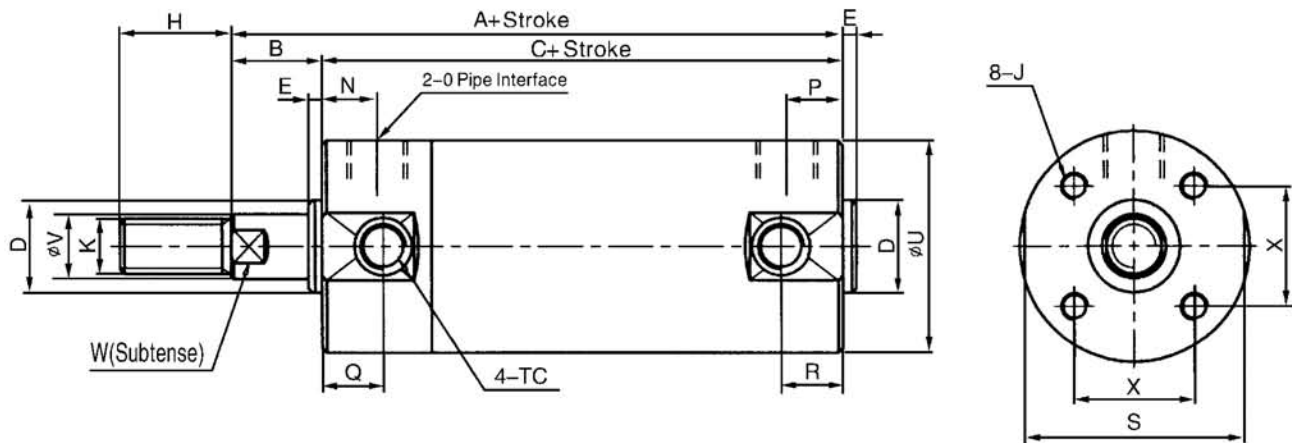


Inner structure drawing:



1	Piston rod	7	magnet
2	compagesseal	8	C-ring
3	Oiled bearing	9	guard seals
4	front cover	10	rear cover
5	O-ring	11	tube
6	crashworthy washer		

Dimension:



symbol/bore	Bore(mm)	A	B	C	D	E	H	J	K	N	O	P	Q	R	S	U	V	W	X
20	~200	86	17	69	12	2	18	M4 × 0.7 深7	M8 × 1.25	12	G1/8	12	11	11	24	26	8	6	14
25	~300	87	18	69	14	2	22	M5 × 0.8 深7.5	M10 × 1.25	12	G1/8	12	11	11	29	31	10	8	16.5
32	~300	89	18	71	18	2	22	M8 × 0.8 深8	M10 × 1.25	12	G1/8	11	11	10	36	38	12	10	20
40	~300	98	20	78	25	2	30	M6 × 1 深12	M14 × 1.5	13	G1/8	12	12	10	44	47	16	14	26
50	~300	113	23	90	30	2	35	M8 × 1.25 深16	M18 × 1.5	14	G1/4	13	13	12	55	58	20	18	32
63	~300	113	23	90	32	2	35	M10 × 1.5 深16	M18 × 1.5	14	G1/4	13	13	12	69	72	20	18	38
80	~300	139	31	108	40	3	40	M10 × 1.5 深22	M22 × 1.5	20	G3/8	20	-	-	80	89	25	22	50
100	~300	139	31	108	50	3	40	M10 × 1.75 深22	M22 × 1.5	20	G1/2	20	-	-	108	110	30	26	60