

Clamp Modules Cylinder

Characteristic:

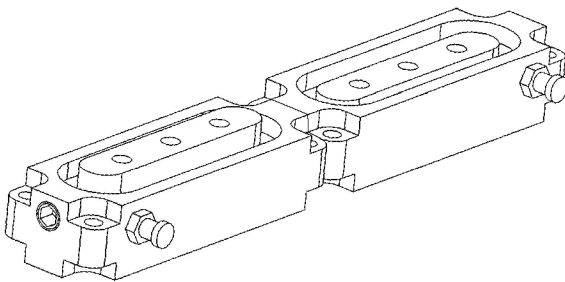
EV series without piston rod, with diaphragm and a significantly shorter stroke, clamps workpiece quickly for surface roughness, suitable for all types of attaching & detaching tools. Flat structure and strong clamp force, especially for slender workpiece. Only work with close fitting the workpiece and with reset function for high speed movement, due to no cushioning.

Specification:

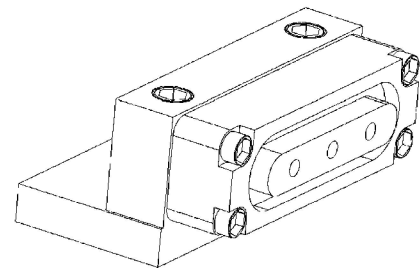
Type	EV-20/75-5
Fluid	Air
Structure Feature	Diaphragm Cylinder
Operating pressure range Mpa	0.5
Ambient temperature °C	-20~40



Mounting type:



Accessories Mounting type:



Dimension:

