

STIEBEL ELTRON

High Quality
WATER FILTER
by Stiebel Eltron / Germany

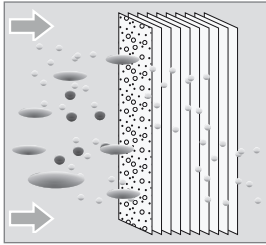
USER MANUAL | STREAM 5S WATER FILTER



STREAM 5S

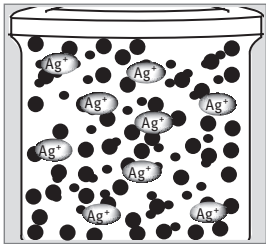
USER MANUAL STREAM 5S.

STREAM 5S FEATURES.



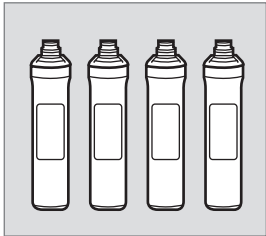
Ultrafiltration membrane

The ultrafiltration membrane removes bacteria and provides microbiological safe and clean drinking water for you and your family.



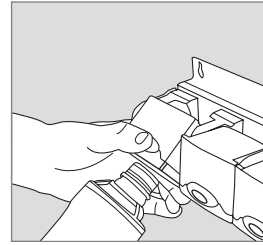
Anti-bacterial carbon with mineral ceramic balls

Anti-bacterial carbon powder in the last filtration step will prevent a contamination from the outside. Oxidation reduction potential mineral balls reduce ORP value which acts as anti-oxidant of water to increase the natural metabolism of human body.



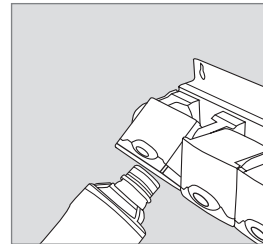
Encapsulated filter

Encapsulated filters allow a clean and safe filtration process without contamination from the outside. The high quality filter media allow for an extraordinary clean and safe filter performance.



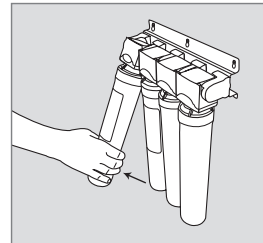
Filter replacement

The Stiebel Eltron Stream filter cartridges are easy to change. The PUSH & CLICK system allows the filter change without using any tool. No plumber or expert is needed.



Automatic water shut off

The filter system has an integrated automatic water stop. As soon as the filter is plugged out of the adapter the water flow will shut off automatically.



Clip function - space saving

Because of the clip function of the filter system there is no extra space needed for under the sink installation. The filter can be easily changed.

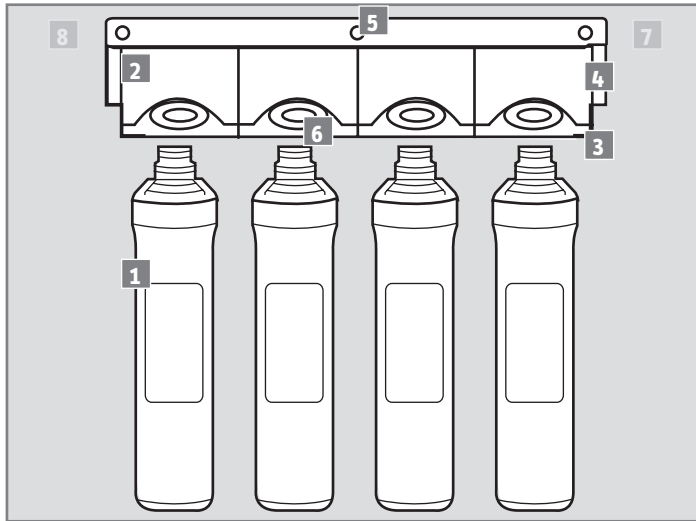
USER MANUAL STREAM 5S.

CONTENT.

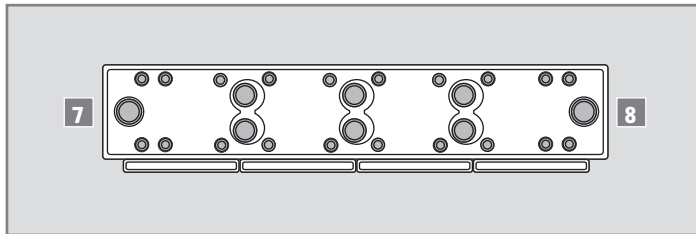
1. Stream 5S filter components _____	04
2. Faucet and accessories _____	05
3. Operating instructions _____	06
4. Filter specifications _____	07
5. Installation and precautions _____	08
6. Installation guidelines _____	09-10
7. Filter replacement _____	11
8. Trouble shooting _____	12

USER MANUAL STREAM 5S.

1. STREAM 5S FILTER COMPONENTS.

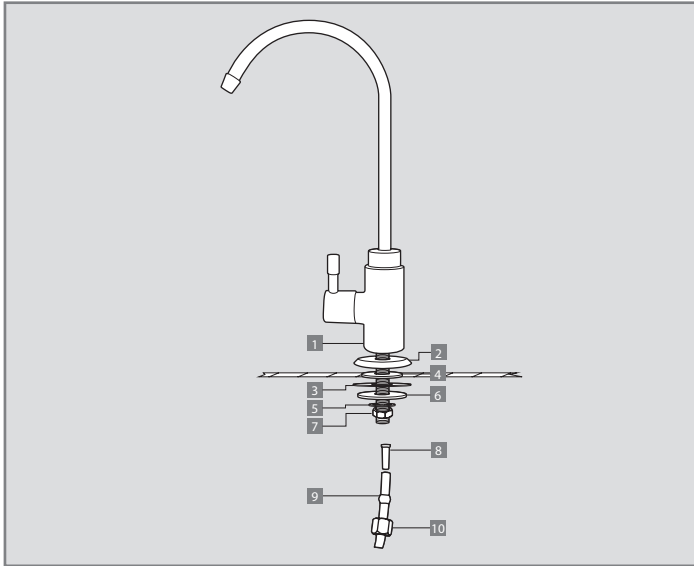


- 1 Encapsulated filter
- 2 Filter adapter
- 3 Lower adapter part
- 4 Upper adapter part
- 5 Holes for wall-mount installation
- 6 Push button for filter change
- 7 Quick connector for water outlet
- 8 Quick connector for water inlet

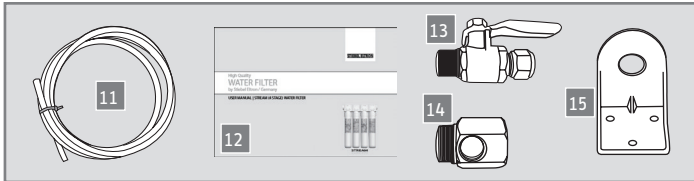


USER MANUAL STREAM 5S.

2. FAUCET AND ACCESSORIES.



- 1 Faucet
- 2 Plate
- 3 Rubber washer
- 4 Washer
- 5 Plastic washer
- 6 Inner tooth washer
- 7 Double-ended nut
- 8 Plastic plug
- 9 Plastic hollow ball
- 10 Locking nut
- 11 Plastic tube [1 x 1.5 m]
- 12 Manual
- 13 Diverter ball valve
- 14 Nipple
- 15 "L" connector



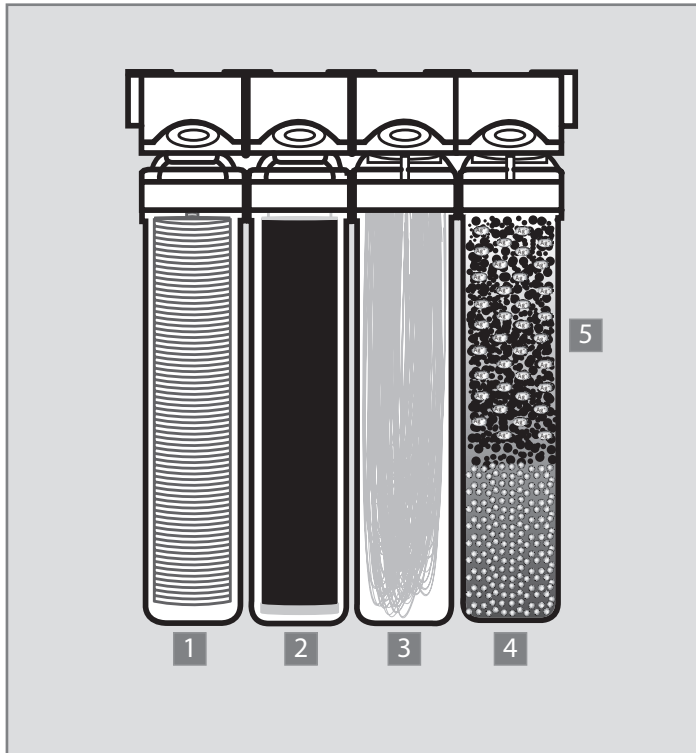
USER MANUAL STREAM 5S.

3. OPERATING INSTRUCTIONS.

Type name	Stream 5S (13") Part no. 238451	
Installation type	under sink, wall-mounted	
Filter type	encapsulated	
Max. operating pressure	4 bar	
Min. operating pressure	1 bar	
Max. operating temperature	35 °C	
Min. operating temperature	4 °C	
Max. operating flow	4 L / min	
Sediment filter	material	polypropylene
	micron rating	1 micron
	rated life time	2880 L or 8 months*
Pre-carbon	material	activated carbon
	micron rating	0.5 micron
	rated life time	2880 L or 8 months*
Ultrafiltration membrane	material	hollow fiber polysulfone
	micron rating	0.01~0.3 micron
	rated life time	4320 L or 12 months*
Granual activated carbon (Ag ⁺) and ORP mineral ceramic balls	material	activated carbon (Ag-), mineral ceramic balls
	rated life time	2880 L or 8 months*

USER MANUAL STREAM 5S.

4. FILTER SPECIFICATIONS.

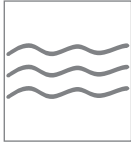


Filter step (5 steps in 4 cartridges)	Removal function
1. Polypropylene sediment filter 1 micron	rust and sediments
2. Activated carbon block filter 0.5 micron	bad taste and odor
	chlorine
	THMs
	VOCs
3. Ultrafiltration membrane 0.01- 0.3 micron	bacteria
	cysts
4. Mineral ceramic balls*	reduces ORP content in water
	supplies minerals into water
5. Granular activated carbon filter (anti-bacterial silver ions)	odors that occur in the filtration process
	prevents bacteria growth within the filter

*it is normal to find air (oxygen) inside drinking water (especially at the first glass). It is the benefits from the mineral ceramic balls and is safe to drink.

USER MANUAL STREAM 5S.

5. INSTALLATION AND PRECAUTIONS.



The water filter can only be used with pre-filtered water from a water supply facility. The filter cannot be used with water from unsafe water sources such as rivers and wells.



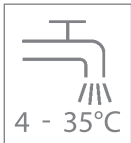
To reach an optimized and satisfying filter result the water filter should only be installed in houses with a pipe pressure between 1 and 4 bar.



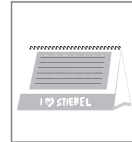
The water filter must be installed in a far distance to inflammable materials and heating sources to avoid deformation.



The water filter should only be installed inside the house.



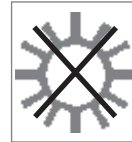
The filter can only be installed to the cold water supply with a water temperature between 4 and 35°C.



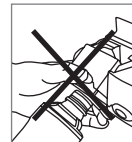
Replace the filters according to the schedule to insure clean drinking water.



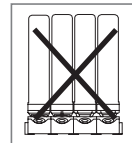
The water filter should not be exposed to force or shock.



The water filter must be kept away or protected from direct light (e.g. sunlight).



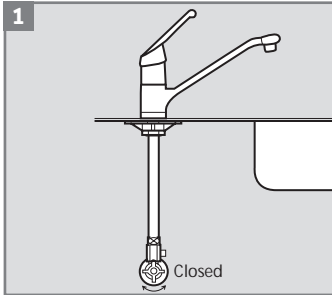
Never use the PUSH button for filter replacement during water flow. The equipment may break down due to high pressure. For filter exchange close the diverter valve.



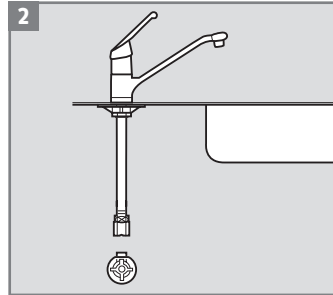
Please install the filter upright. In case of moving or raising the filter make sure that the filter stays upright.

USER MANUAL STREAM 5S.

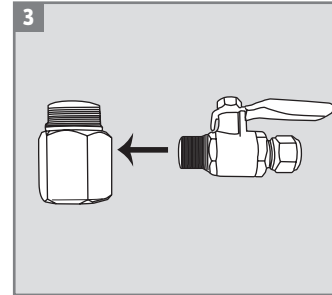
6. INSTALLATION GUIDELINES.



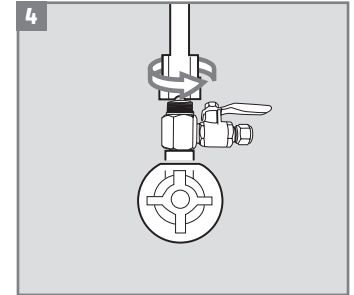
1 Lock the stop valve of the cold water supply line.



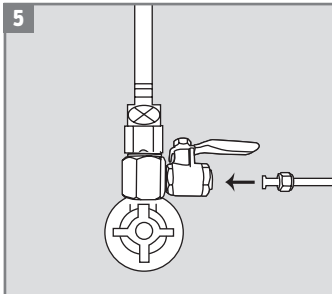
2 Detach the metal hose from the cold water supply under the sink.



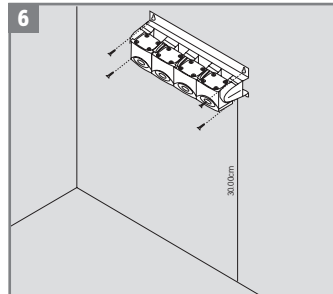
3 Connect the diverter ball valve with the nipple (use teflon-tape).



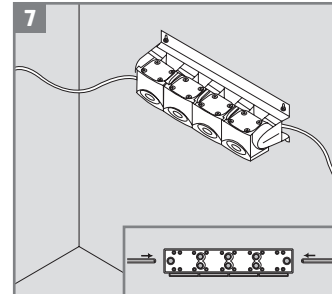
4 Assemble the ball valve and nipple to the water supply. Re-attach the metal hose.



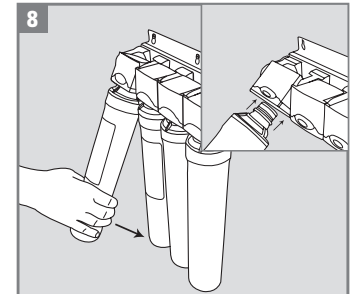
5 Cut the plastic tube in 2 pieces. Connect the inlet tube and tighten the tube with the cap.



6 Select a proper place under the sink that has at least 25 cm (10") / 30 cm (13") from the floor to allow to insert the cartridges easily. Make holes into the wall to fix the filter adapter under the sink.



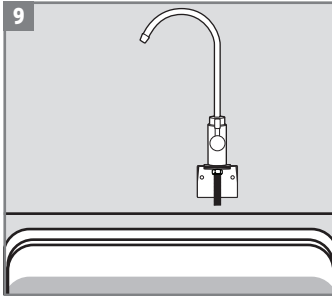
7 Insert the plastic tube and connect the adapter on the wall.



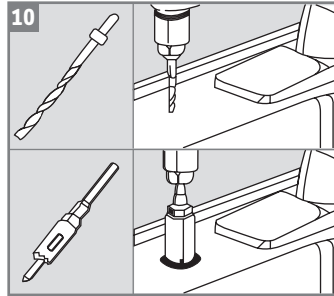
8 Bring the adapter in upward position and insert the filter. A loud "click" will signal that the filter is attached properly. Bring the filter back in the normal position.

USER MANUAL STREAM 5S.

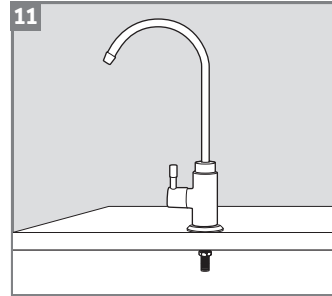
6. INSTALLATION GUIDELINES.



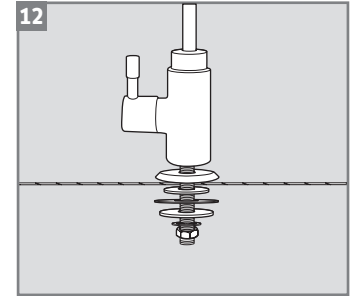
In case of wall-mounted installation of the faucet use the „L“ connector to fix the faucet similar to the descriptions in picture 11-12.



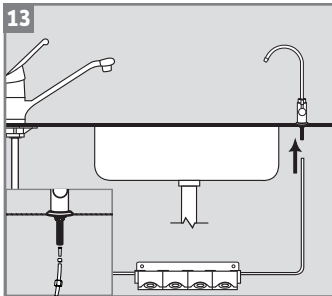
Select a proper place for the faucet. Drill a placement hole into the sink.



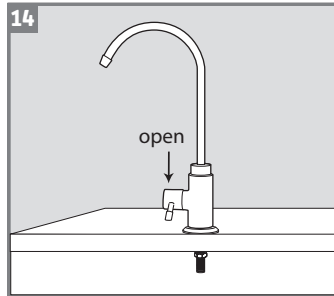
Insert the base washer to the screw beneath the faucet's main body and insert the faucet to the hole.



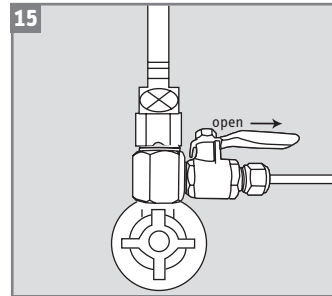
Insert the rubber washer from beneath the sink and fix the faucet in place.



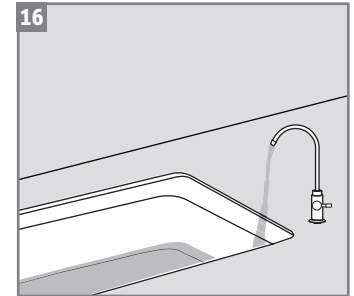
Connect the outlet tube with the drinking water faucet connector.



Before operating the system open the faucet.



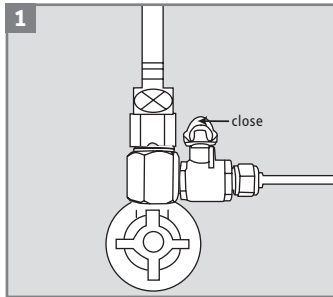
Open the diverter valve under the sink slowly. Check the whole system for water leakages.



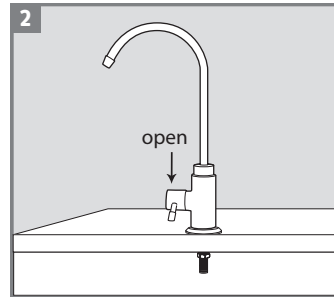
If there is no installation mistake or leakage keep the faucet open for 10 minutes to bring rest particles and air out of the unit.

USER MANUAL STREAM 5S.

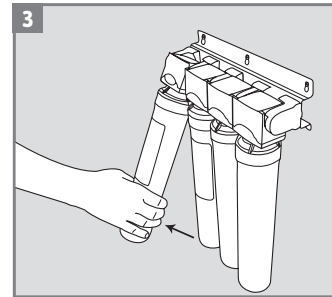
7. FILTER REPLACEMENT.



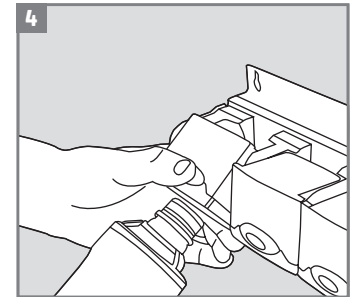
Close the diverter valve under the sink.



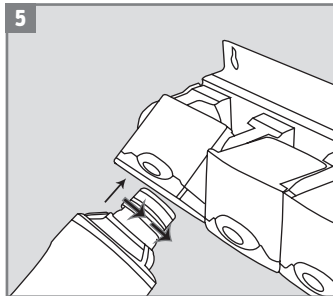
Open the faucet shortly to release the pressure in the system.



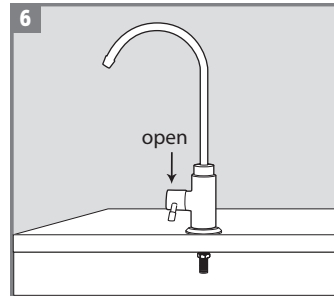
Pull the adapter connector to an angle of 45° while holding the filter.



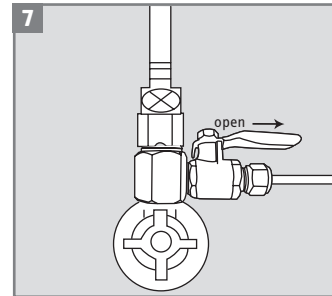
Press the push button and rotate the filter to eject.



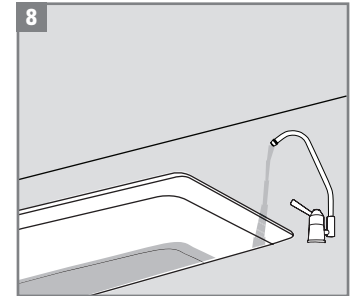
Remove the cap of the new filter and insert in the head connector. A "click" will signal that the filter cartridge is connected properly.



Before operating the system open the faucet.



Open the diverter valve under the sink slowly. Check the whole system for water leakages.



If there is no installation mistake or leakage keep the faucet open for 10 minutes to bring residual particles and air out of the unit.

**It is recommended to change the plastic tube every two years for hygienic and safety purposes.

USER MANUAL STREAM 5S.

8. TROUBLE SHOOTING.

Problems	Possible cause	Trouble shooting
Black color or black particles in the water.	The stream water filter contains carbon powder. After installation small particles can occur in the water.	After installation or filter exchange let the water flow for about 10 minutes to clean the filter from possible small residual particles of carbon.
Slow water flow.	The lifetime of the filter is finished.	Replace the filter cartridge.
	The filter is clogged.	Replace the filter cartridge.
Noise in the system.	There are air bubbles in the system.	After installation let the water flow for about 10 minutes to remove all air from the system.
Unusual water or chlorine taste/bad odor.	The cartridge does not remove chlorine and other contaminants from the water. The life time of the filter cartridge is finished.	Replace the filter cartridge.
	You have not used the filter for a while and some sediments and contaminants developed a bad smell in the system.	Open the valves and let the water flow for at least 5 minutes.
Water leakage.	Tubes, fittings, nipples might not be connected properly.	Check every connection to be inserted in the proper depth.
No water flow.	The diverter valve is closed.	Open the diverter valve.

NOTE

NOTE

NOTE

GERMANY

STIEBEL ELTRON INTERNATIONAL GMBH | DR.-STIEBEL-STRASSE | 37603 HOLZMINDEN
PHONE +49 5531 7020 | E-MAIL INFO@STIEBEL-ELTRON.COM | WWW.STIEBEL-ELTRON.COM

THAILAND

STIEBEL ELTRON ASIA CO.,LTD | 469, MOO 2, TAMBOL KLONG-JIK, AMPHUR BANGPA-IN,
AYUTTHAYA, 13160
CUSTOMER CONTACT CENTER PHONE: +66 2021 9300
E-MAIL: INFO@STIEBELELTRONASIA.COM | WWW.STIEBELELTRONASIA.COM

Size : A5

Material: Green read paper 75 g.

Plastic bag : 7 x 11 INCH

Product code : STREAM 5S (STE) : 238451

Part name : OPERATING INSTRUCTION STREAM 5 S En

Rev.01

Part no. 328212



STIEBEL ELTRON