

STIEBEL ELTRON

High Quality

WATER FILTER

by Stiebel Eltron / Germany

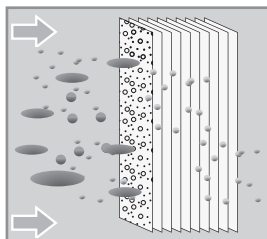
USER MANUAL | NATURE WATER FILTER



NATURE

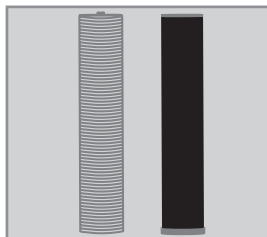
USER MANUAL - NATURE WATER FILTER.

NATURE FEATURES.



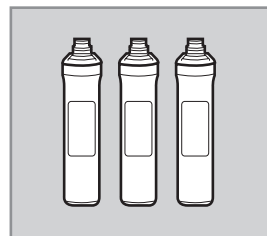
Nano Alumina membrane

The Nano Alumina membrane removes bacteria and provides microbiological safe and clean drinking water for you and your family.



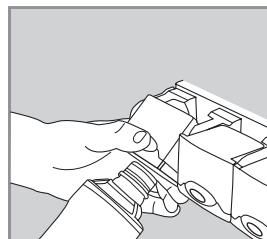
Activated Carbon Block

The carbon block filter with silver ions added and heavy metal removal agents not only removes harmful organic chemical compounds (VOCs) and trihalomethane (TTHMs), chlorine, bad taste and odors but also removes heavy metals and prohibits the growth of bacteria on the surface of the filter cartridge to keep the inside of the cartridge always fresh.



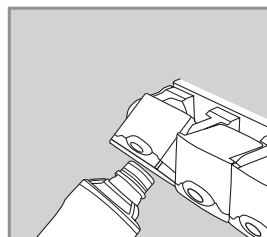
Encapsulated filters

Encapsulated filters allow a clean and safe filtration process without contamination from the outside. The high quality filter media allows for an extraordinary clean and safe filter performance.



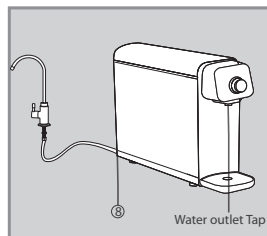
Filter replacement

The Stiebel Eltron Nature filter cartridges are easy to change. The PUSH & CLICK system allows the filter change without using any tool. No plumber or expert is needed.



Automatic water shut off system

The filter system has an integrated automatic water stop valve. As soon as the filter is plugged out of the adapter the water flow will be shut off automatically.



The All-In One unit

Able to install with a diverter valve (Plug & Play unit) or with a three-way valve. Outlets can be both via "water outlet valve" or via a faucet.

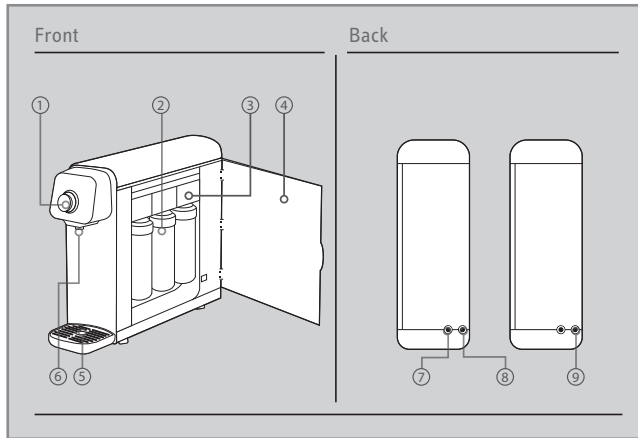
USER MANUAL - NATURE WATER FILTER.

CONTENT.

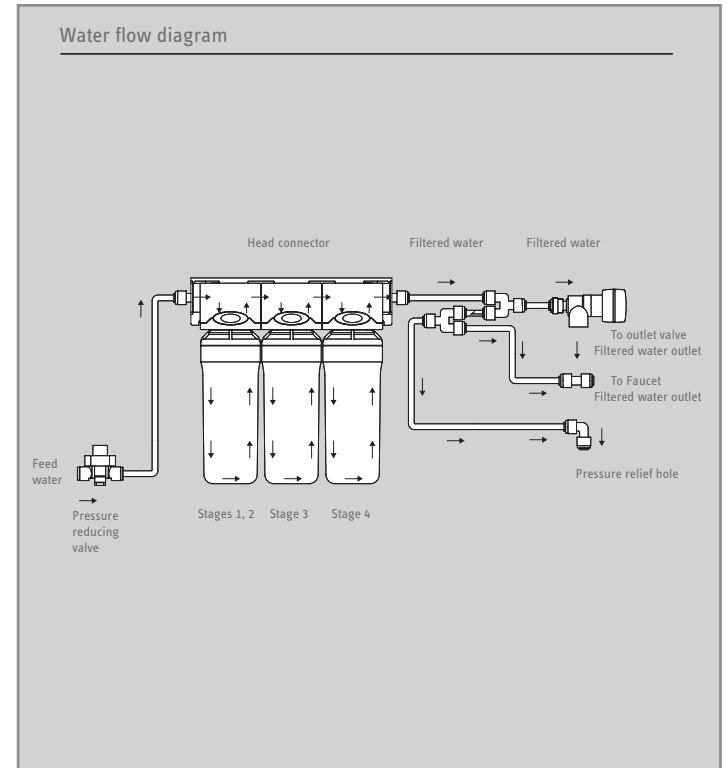
1. Nature filter components	04
2. Faucet and accessories	05
2. Operating instructions	06
4. Filter specifications	07
5. Installation and precautions	08
6. Warning	09
7. Safety caution	10
8. Installation guidelines	11-15
9. How to clean the parts	16
10. Filter replacement	17
11. Trouble shooting	18-19

USER MANUAL - NATURE WATER FILTER.

1. FILTER COMPONENTS.

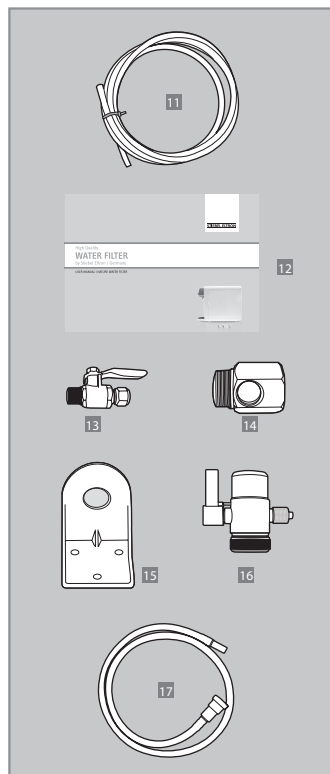
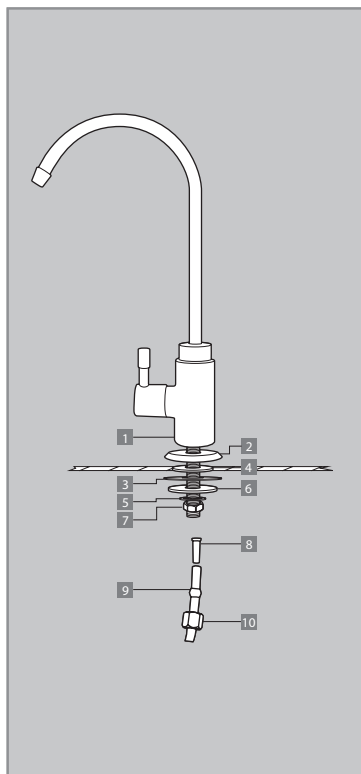


- 1** ON/OFF outlet valve
- 2** Filter cartridges
- 3** Head connector
- 4** Filter door
- 5** Water tray and tray cover
- 6** Water outlet valve
- 7** Water inlet connection
- 8** Water outlet connection to faucet or to drain
- 9** Flow stopper (to close water outlet to faucet)



USER MANUAL - NATURE WATER FILTER.

2. FAUCET AND ACCESSORIES.



- 1 Faucet
- 2 Plate
- 3 Rubber washer
- 4 Washer
- 5 Plastic washer
- 6 Inner tooth washer
- 7 Double-ended nut
- 8 Plastic plug
- 9 Plastic hollow ball
- 10 Locking nut
- 11 Plastic tube [1 x 3 m]
- 12 Manual
- 13 Ball valve
- 14 Nipple
- 15 Wall bracket for faucet
- 16 Diverter valve
- 17 Detachable hose

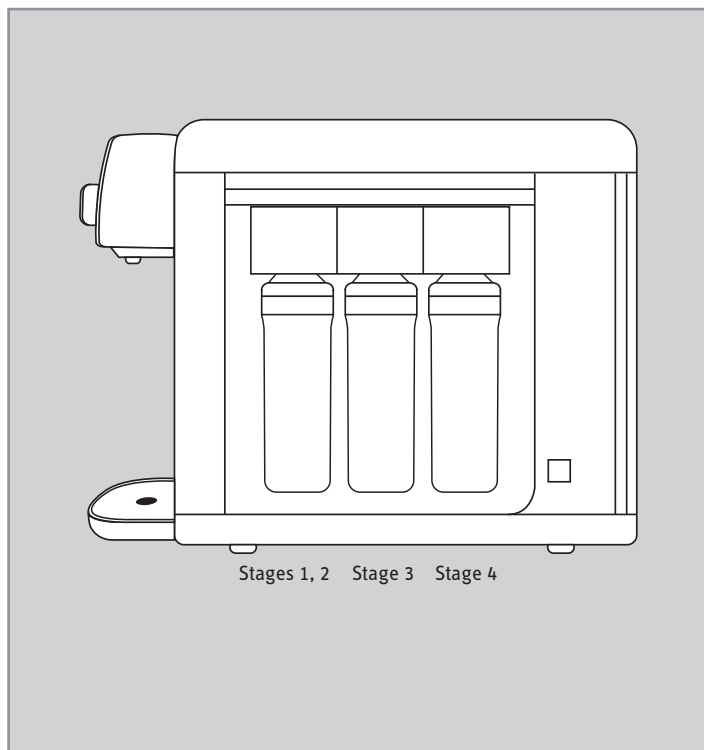
USER MANUAL - NATURE WATER FILTER.

3. OPERATING INSTRUCTIONS.

Type name		Nature (4-stage in 3 cartridges, 8")
Part name	Unit	235028
	Dual SC filter 8"	235033
	Nano PAC filter 8"	235029
	Carbon block filter 8"	235031
Installation type		counter top, undersink (via Faucet)
Filter type		encapsulated filter cartridges
Max. operating pressure		4 bar
Min. operating pressure		1 bar
Max. operating temperature		35 degree C
Min. operating temperature		4 degree C
Max. operating flow (2 bar)		1.9L/min
Dual sediment carbon filter	material	polypropylene, activated carbon powder
	micron rating	5 micron
	rated lifetime	2160 L or 6 months (*)
Nano alumina filter	material	nano alumina fiber membrane
	micron rating	2 micron with positive charge coated
	rated lifetime	3600 L or 10 months (*)
Activated carbon block filter	material	activated carbon block, heavy metal removal agents, silver ions
	micron rating	2 micron
	rated lifetime	2160 L or 6 months (*)
Weight	kg	4
Size	W x D x H (cm)	11.5 x 43.4 x 32.0

USER MANUAL - NATURE WATER FILTER.

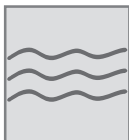
4. FILTER SPECIFICATIONS.



Stages	Name	Features in short	Lifetime
Stage 1	Sediment	Removes rust, sand, dust, impurity with 5-10 micron size	2160 L or 6 months
Stage 2	Activated carbon powder	Reduces chlorine, bad taste and odor Reduces organic compounds (VOC) and trihalomethane (TTHMs)	
Stage 3	Nano alumina coated with activated carbon powder filter	Removes of up to 99.9999% of bacteria, 99.9% of virus, reduces heavy metal and DNA Reduces all types of particles, silica, natural organic impurities Filters out particles such as submicron and colloids Reduces chlorine, bad taste and odor	3600 L or 10 months
Stage 4	Activated carbon block plus silver ions and heavy metal removal agents	Reduces chlorine, bad taste, odor and heavy metals Absorbs harmful organic chemicals compounds (VOC) and trihalomethane (TTHMs) Silver ions prevent the growth of bacteria inside the cartridge	

USER MANUAL - NATURE WATER FILTER.

5. INSTALLATION AND PRECAUTIONS.



The water filter can only be used with pre-filtered water from a water supply facility. The filter cannot be used with water from unsafe water sources such as rivers and wells.



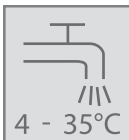
To reach an optimized and satisfying filter result the water filter should only be installed in houses with a pipe pressure between 1 and 4 bar.



The water filter must be installed in a far distance to inflammable materials and heating sources to avoid deformation.



The water filter must only be installed inside the house. Do not install on uneven or inclined floor. Do not put on sitting cushion, carpet, pallet or on floor pad.



The filter can only be installed to the cold water supply with a water temperature between 4 and 35°C.



Replace the filters according to the schedule to insure clean and safe drinking water.



The water filter should not be exposed to force or shock.



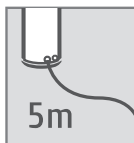
The water filter must be kept away or protected from direct light (e.g. sunlight) to protect from discoloration.



Never use the PUSH button for filter replacement during water flow. The equipment may break down due to high pressure. For filter exchange close the diverter valve.

USER MANUAL - NATURE WATER FILTER.

6. WARNING.



Do not make distance from tap water to inlet water longer than 5 m.
It can cause low product flow & performance.



Clean the product periodically.
To improve product performance.



Do not let water get inside of the water purifier.
It can cause product damage.



If you find water leak, please turn off the tap water valve and contact Stiebel Eltron call center.



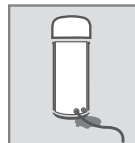
Do not pull out plastic tube during operation or when you move the water filter to other places.
It can cause product damage and water leak.



Do not put metal, chemical and water bottle on the product.
It can cause product damage.



Do not disassemble and modify the product
If you meet product problems, please contact your Stiebel Eltron call center.

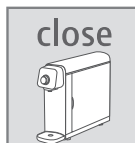


Check water leak at the plastic tube and connecting area of IN & OUTLET to prevent damage

Note: Do not let children play with the lever often.
It can cause product damage and water leak

USER MANUAL - NATURE WATER FILTER.

7. SAFETY CAUTION.



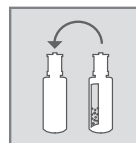
Keep the door closed during operation, otherwise foreign substance and insect can enter the product body and cause damage.



Flush the filter cartridge by letting water flow for 5 minutes after it has not been used for a long time.



Do not move the product when water filter is running. It can cause product damage or water leak by plastic tube disconnection.



Replace filter cartridges regularly according to the replacement period.

If the cartridges are not changed on time, it can cause bad water smell from outlet and filter performance degradation. Please refer to article 10 (page 17) for filter replacement.




When cleaning the product, do not use benzene, thinner, alcohol and other chemical substances. Product exterior can be damaged.



Do not remove plastic tube when water purifier is operating. It can cause product damage or water leak by hose disconnection.

 Use Stiebel Eltron standard filter for replacement.

If the filter from other companies or nonstandard product is used, it may cause breakdown, bad smell, water taste changed, water leak and poor performance

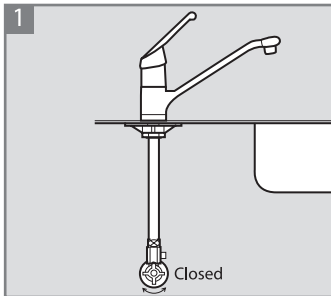
 Do not use purified water for fish in aquarium.

Filtered water is NOT suitable for fish.

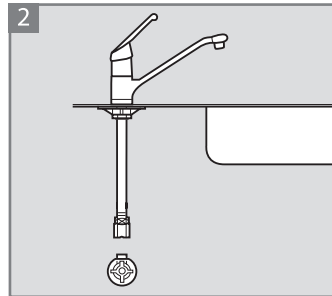
USER MANUAL - NATURE WATER FILTER.

8. INSTALLATION GUIDELINES.

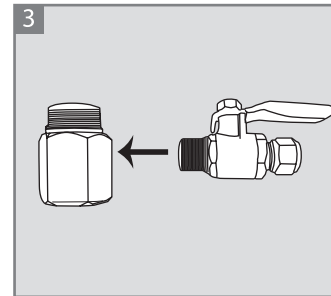
8.1 Install with Tee valve (ball valve & nipple) and faucet.



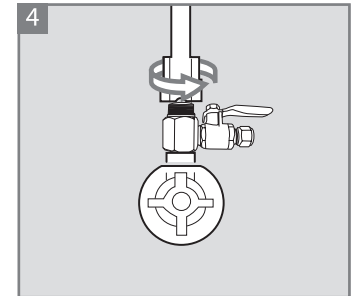
Lock the stop valve of the cold water supply line.



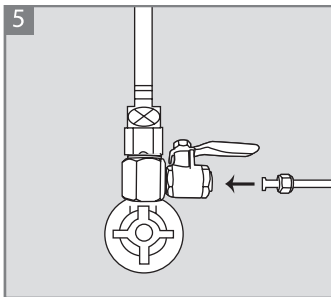
Detach the metal hose from the cold water supply under the sink.



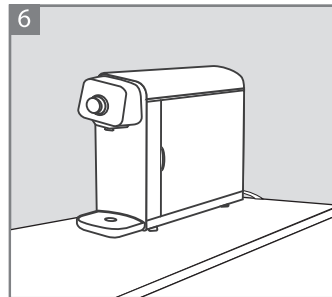
Connect the ball valve with the nipple (use teflon-tape).



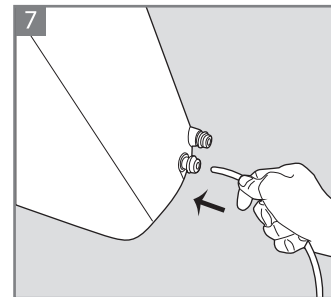
Assemble the ball valve and nipple to the water supply. Re-attach the metal hose.



Cut the plastic tube in 2 pieces. Connect the inlet tube and tighten the tube with the locking nut.



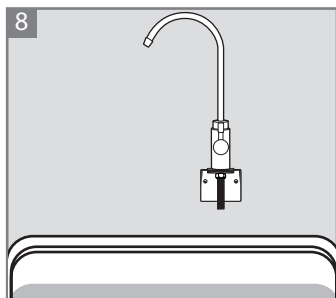
Select a proper place above the sink or under the sink to place the Nature.



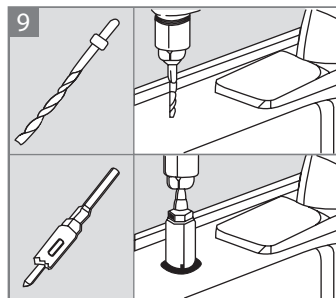
Insert the inlet plastic tube into the water inlet connection hole 7 (page 4) and plug the tube in tightly.

USER MANUAL - NATURE WATER FILTER.

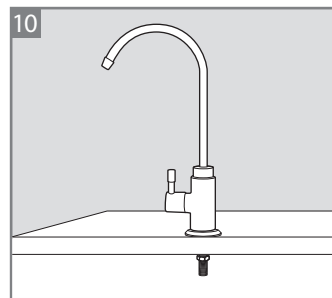
8. INSTALLATION GUIDELINES.



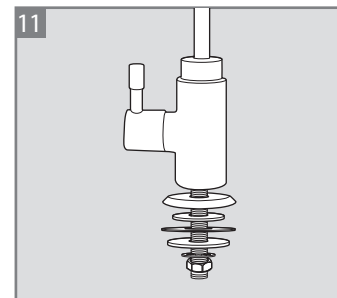
In case of wall-mounted installation of the faucet use the wall bracket to fix the faucet similar to the descriptions in picture 11-12.



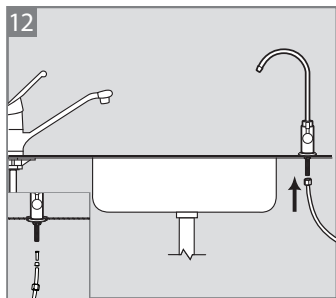
In case of installation with the faucet, select a proper place for the faucet. Drill a placement hole into the kitchen counter.



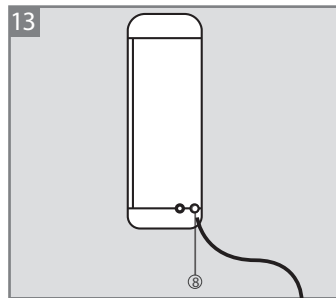
Insert the base washer to the screw beneath the faucet's main body and insert the faucet to the hole.



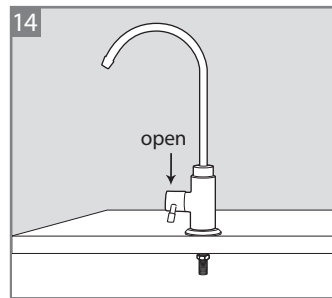
Insert the rubber washer from beneath the kitchen counter and fix the faucet in place.



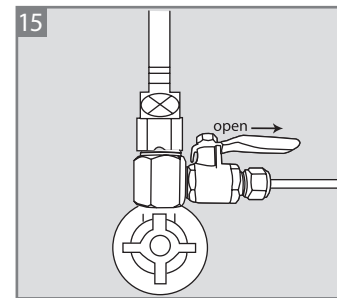
Connect one side of the plastic tube into the faucet.



Insert the another head of the plastic tube into the water outlet connection hole 8.



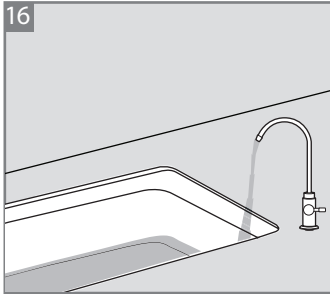
Before operating the system open the faucet.



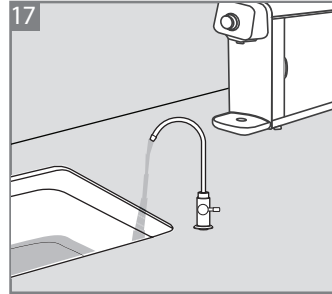
Open the ball valve under the sink slowly. Check the whole system for water leakages.

USER MANUAL - NATURE WATER FILTER.

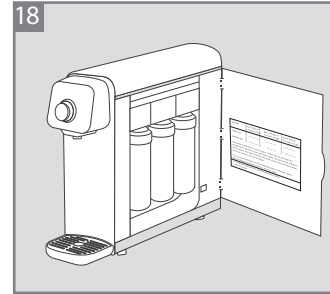
8. INSTALLATION GUIDELINES.



16
If there is no installation mistake or leakage keep the faucet open for 10 minutes to clean possible residual of carbon particles and air out of the unit.



17
The filtered water can now flow out from the faucet and the front water outlet valve (no. 6 page 4). The Nature is now ready to use.

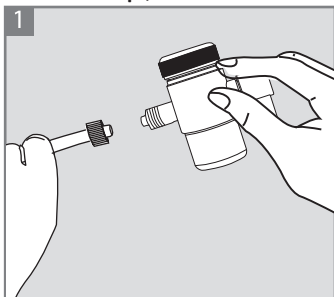


18
Fills in the "START DATE" and "EXPIRED DATE" to record the lifetime of the filter cartridges.

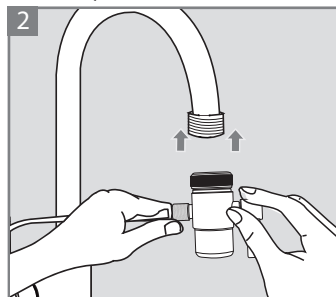
USER MANUAL - NATURE WATER FILTER.

8. INSTALLATION GUIDELINES.

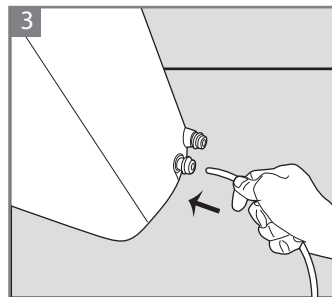
8.2 Counter top (Install Nature with the diverter valve).



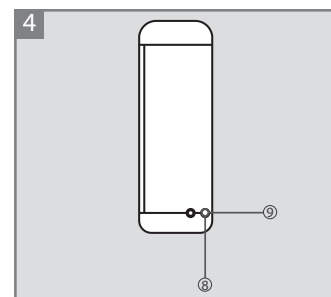
Connect the inlet plastic tube to the diverter valve. Tighten the locking nut. (*)



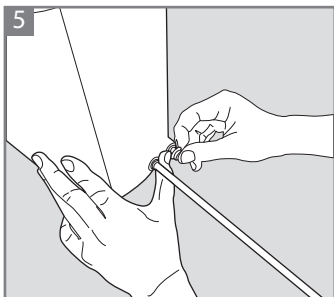
Connect the diverter valve to the sink faucet. If needed use one of the 3 faucet adapters. (**)



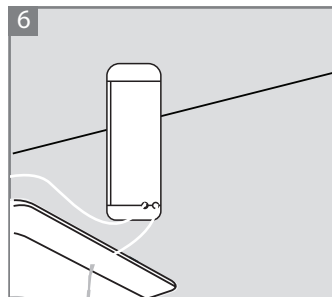
Insert the other end of the inlet plastic tube to the water inlet connection hole (no.7 page 4) on the back of the unit until it is locked properly.



In case you do not connect water outlet to the filtered faucet, it is a must to keep the water outlet connection hole closed by the Flow stopper (no. 9) so that water will not flow out from there.



How to flush the cartridge:
The water outlet hole comes with the flow stopper. If you do not install the Nature with the faucet, then close the diverter valve, take out the flow stopper by pressing the ring down.



Insert the plastic tube into the water outlet hole (8) guide another head of the plastic tube into the sink then turn the diverter on to let water run through the Nature for 10 minutes to flush away possible residuals of carbon. Close the water inlet valve. Take out the plastic tube. Close the hole (8) tightly with the flow stopper. After that, the Nature is ready to use.

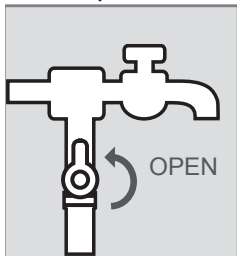
* Push the plastic firmly and completely over the valve before locking it with the cap.

** In case no adapter fits to your faucet, you will need to purchase an additional adapter that will fit your faucet style.

USER MANUAL - NATURE WATER FILTER.

8. INSTALLATION GUIDELINES.

8.3 Check points before use.

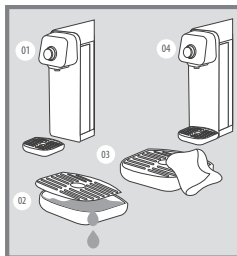


Open the Ball valve before using.

Check if tap water is still running first and then open the ball valve.



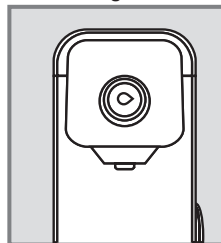
Flush the filter cartridge (by letting the filtered water flow) for at least 5 minutes after it has not been used for a long time.



Drain the water from the water tray periodically.

Caution : If you do not use the water filter for a long time, close the water inlet valve.

8.4 How to get filtered water from outlet valve.



Open (ON): Turn water ON/OFF outlet valve clockwise



Close (OFF): Turn water ON/OFF outlet valve counter clockwise

USER MANUAL - NATURE WATER FILTER.

9. HOW TO CLEAN THE PARTS.

9.1 How to clean the ON/OFF outlet valve.

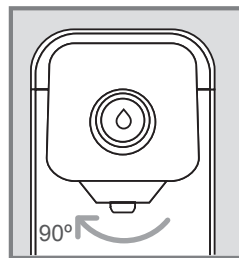
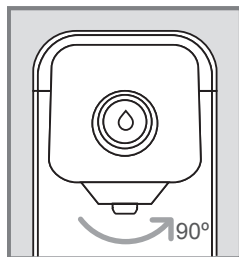
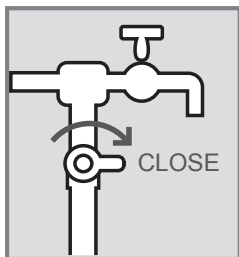
Step 1: Close the water inlet valve (Ball valve or diverter valve).

Take out the front water outlet valve by turning clockwise

Step 2: Use neutral detergent to clean the part

Step 3: Use a soft and dry cloth to clean.

Reinstall it to the water filter by turning it counter clockwise



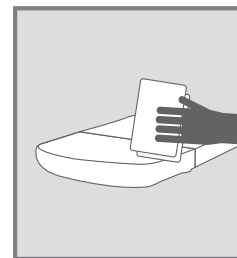
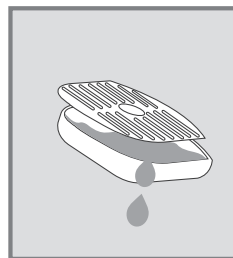
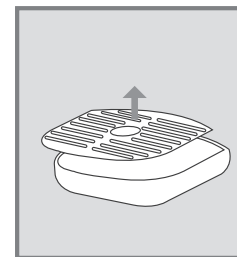
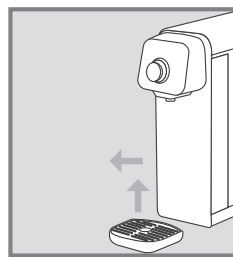
9.2 How to clean the water tray.

Step 1: Pull out the tray and disassemble from the unit

Step 2: Pull out the tray cover

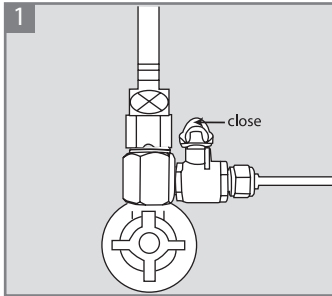
Step 3: Drain water from the tray and clean the tray by clean water and soft dry cloth

Step 4: Reassemble the tray and its cover to complete the cleaning

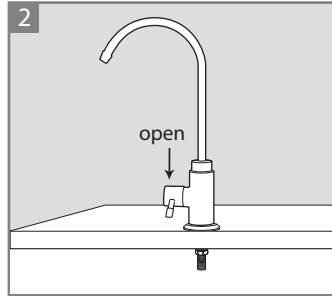


USER MANUAL NATURE.

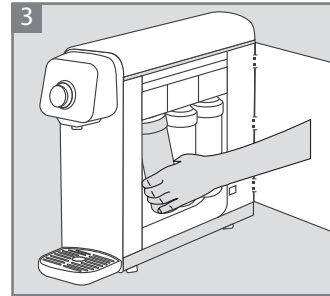
10. FILTER REPLACEMENT.



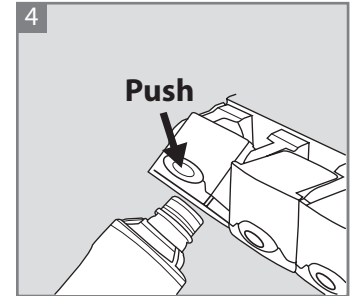
1 Close the ball valve under the kitchen counter or close the diverter valve at the sink faucet.



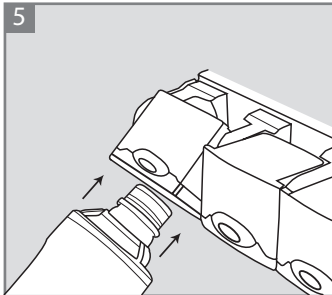
2 Open the faucet shortly or open the front water outlet valve to release the pressure in the system.



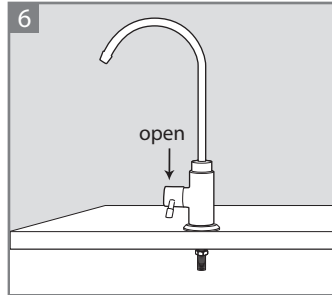
3 Open the filter door. Pull the head connector up while holding the filter.



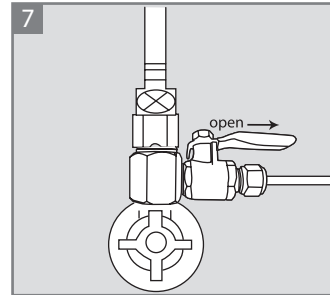
4 Push the button. Pull out the filter to eject them. Some drops of water can come out from filter (note that it is not water leaking).



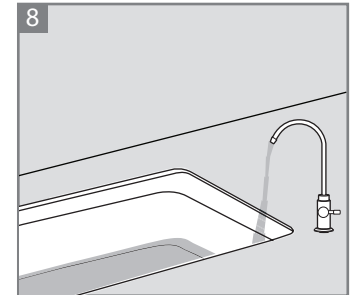
5 Remove the cap of the new filter and insert in the head connector. A "click" will signal that the filter cartridge is connected properly.



6 Before operating the system, open the faucet. If not using the faucet, follow the item 8.2.6 (how to flush the cartridge) to complete the cartridge change process.



7 Open the diverter valve under the kitchen counter slowly. Check the whole system for water leakage.



8 If there is no installation mistake or leakage, keep the faucet open for 10 minutes to clean possible residual particles of carbon. The water filter is now ready to use

USER MANUAL - NATURE WATER FILTER.

11. TROUBLE SHOOTING.

Problems	Possible cause	Trouble shooting
Black color or black particles in the water.	The water filter contains carbon powder. After installation small particles can occur in the water.	After installation or filter exchange let the water flow for about 10 minutes to clean the filter from possible small residual particles of carbon.
Slow water flow.	The lifetime of the filter is finished	Replace the filter cartridges.
	The filter is clogged.	Replace the filter cartridges.
Noise in the system.	There are air bubbles in the system.	After installation let the water flow for about 10 minutes to remove all air from the system.
Unusual water or chlorine taste and bad odor.	The cartridge does not remove chlorine and other contaminants from the water. The life time of the filter cartridge is finished.	Replace the filter cartridge.
	You have not used the filter for a while and some sediments and contaminants developed a bad smell in the system.	Open the valves and let the water flow for at least 5 minutes.
Water leakage.	Tubes and fittings, nipples might not be connected properly.	Check every connection to be inserted in the proper depth. If not found problems, contact Stiebel Eltron call center.
No water flow.	The diverter valve is closed.	Open the diverter valve.
Water filter has loud strange noise	The floor under water filter is uneven.	Install water filter on the flatted floor.
	The water filter has touched any other things?	Do not let other objects touch the water filter.
	It has noise after water comes out from faucet?	This water filter is tankless model. When the water is used, water comes through the water filter from the tap instantly and it can make some sound. This is normal.

USER MANUAL - NATURE WATER FILTER.

11. TROUBLE SHOOTING.

Problems	Possible cause	Trouble shooting
White particle inside water filter	There might be high calcium inside your Inlet water under hot water inlet, calcium might form and in unusual water pressure, it flows out to filtered water.	It is safe to drink and then monitor, do not let high water temperature (above 35 °C) to pass through the water filter. If you are still worry about it please contact STIEBEL ELTRON for water sample testing.

GERMANY

STIEBEL ELTRON INTERNATIONAL GMBH | DR.-STIEBEL-STRASSE | 37603 HOLZMINDEN
PHONE +49 5531 7020 | E-MAIL INFO@STIEBEL-ELTRON.COM | WWW.STIEBEL-ELTRON.COM

THAILAND

STIEBEL ELTRON ASIA CO.,LTD | 469, MOO 2, TAMBOL KLONG-JIK, AMPHUR BANGPA-IN,
AYUTTHAYA, 13160
CUSTOMER CONTACT CENTER PHONE: +66 2021 9300
E-MAIL: INFO@STIEBELELTRONASIA.COM | WWW.STIEBELELTRONASIA.COM

Size : A5

Material: GREEN READ PAPER 75 G.

Plastic bag : 7 x 11 INCH

Product code : NATURE (STE) : 235028

Part name : MANUAL NATURE (Eng)

Rev.01

Part no. 327604



STIEBEL ELTRON