

**STIEBEL ELTRON**

High Quality

# WATER FILTER

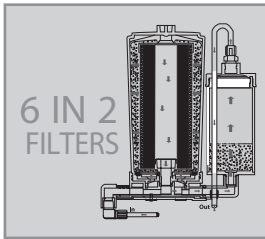
by Stiebel Eltron / Germany

USER MANUAL | **rain+** WATER FILTER



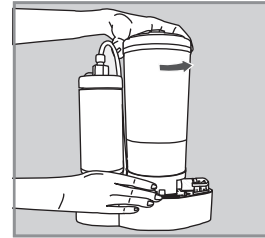
**rain+**

## SHORT OVERVIEW. rain<sup>o</sup> FEATURES.



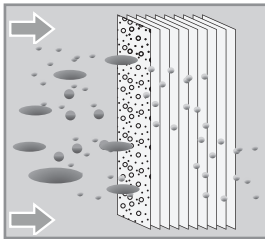
### 6 stages in 2 filters

The qualities of 6 single filtration stages are combined in 2 cartridges. The high quality filter media allow for an extraordinary clean and safe filter performance.



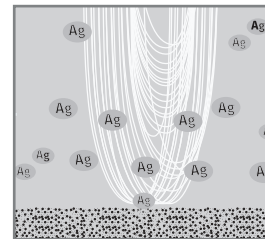
### Easy filter replacement

The Stiebel Eltron rain<sup>o</sup> filter cartridges are easy to change. No plumber or expert is needed.



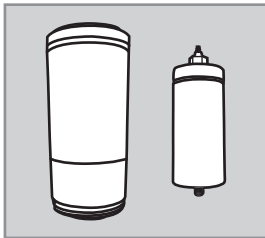
### Ultrafiltration membrane 0.01~0.1 micron

The membrane with a pore size of 0.01~0.1 micron removes bacteria and provides microbiologically safe and clean drinking water for you and your family.



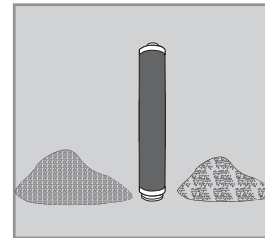
### Silver - impregnated carbon

Silver-impregnated carbon powder has an anti-bacterial function and kills bacteria that are filtered by the hollow fiber membrane. It therefore prohibits bacteria growth in the filter media.



### Encapsulated filter cartridges

Encapsulated cartridges allow a clean and safe filter replacement. During the filter change a contamination e.g. because of touching the filter is not possible.



### 4 steps of carbon

The large amount of carbon in the rain<sup>o</sup> water filter removes bad odors and taste. Therefore it produces a very soft and high quality drinking water.

---

# USER MANUAL rain<sup>®</sup>

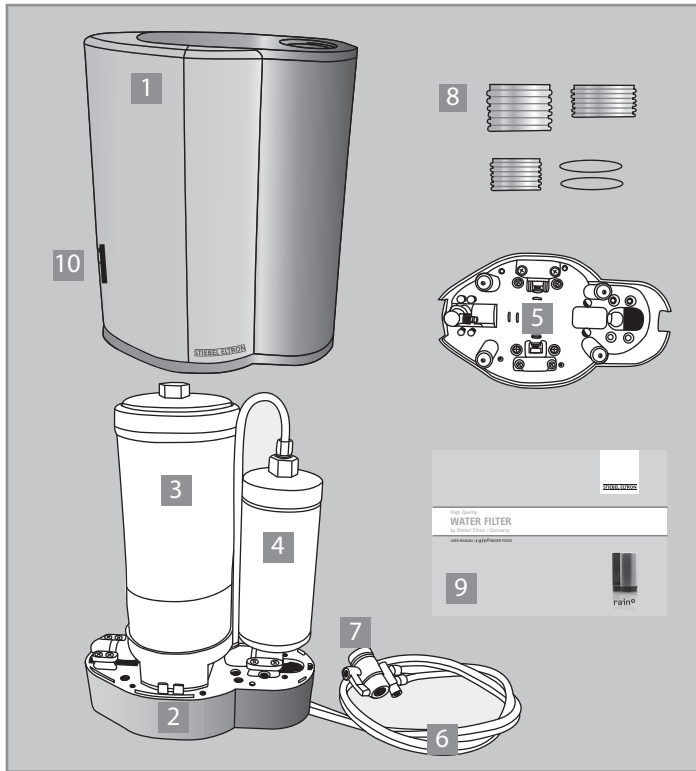
## CONTENT.

---

1. rain <sup>®</sup> filter components and accessories	04
2. Operating instructions	05
3. Filter specifications	06
4. Lifetime indicator specifications	07
5. Installation and precautions	08
6. Installation guidelines and filter replacement	09-11
7. Trouble shooting	12

# USER MANUAL rain<sup>+</sup>

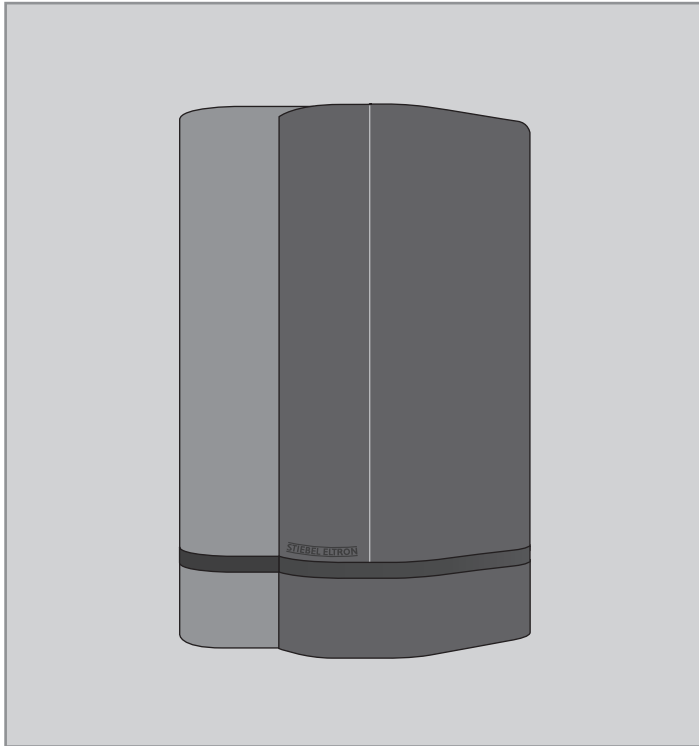
## 1. rain<sup>+</sup> FILTER COMPONENTS AND ACCESSORIES.



- 1 Top cover
- 2 Base
- 3 4 in 1 filter [carbon, coral sand, sediment, carbon block]
- 4 2 in 1 filter [carbon, ultrafiltration]
- 5 Ejectors
- 6 Double way tube
- 7 Double way switch diverter valve with cap
- 8 Adapter [3 x], o-ring [2 x]
- 9 Manual
- 10 Lifetime indicator

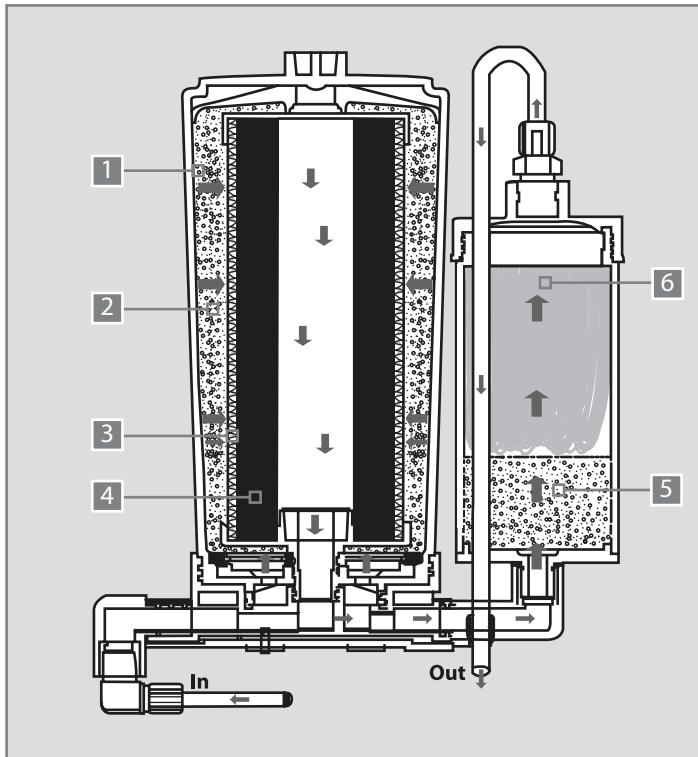
# USER MANUAL rain<sup>®</sup>

## 2. OPERATING INSTRUCTIONS.



<b>Model</b>	Water filter
- Type name	rain <sup>®</sup>
- Part no.	1511-235063 [rain <sup>®</sup> ]
<b>Characteristics</b>	
- Installation type	countertop
- Filter cartridge	6 in 2 composite filters
- Housing material	ABS [constructed of durable, high impact plastic]
- Max. operating pressure	bar 4
- Min. operating pressure	bar 1
- Max. operating temperature	°C 35
- Min. operating temperature	°C 4
<b>Rated service</b>	
- Rated service flow	2 L / min at 1 bar   new filter cartridge [Actual flow rate will depend on water quality water pressure and the time the filter has been in service.]
<b>Rated life time</b>	
- 4 in 1 Filter	3600 L or 10 months
- 2 in 1 Filter	4320 L or 12 months
<b>*NOTE:</b> The life time will depend on the water quality. It is based on the consumption of 12 L daily.	

## 3. FILTER SPECIFICATIONS.



Filter step	Removal function
1. Granular activated carbon filter	Chlorine, bad taste and odor
	THMs, VOCs
2. Coral sand	Supplies natural calcium source
	Improves acidic tap water to be more alkaline
	Reduces odors
3. Sediment 10 micron	Remove sediments and particles larger than 5-10 micron
4. Bamboo mixed activated carbon block 1 micron	Removes bad smell, odors
	Improves taste of filtered water.
	Removes residual chlorine, chloroform
	Absorbs VOC's & anti-bacterial effect
	Removes herbicides and pesticides, TTHMS
	Removes heavy metals like lead, mercury.
5. Granular activated carbon filter [silver impregnated]	Improves taste and odor
	Prohibits the growth of bacteria inside filter
6. Ultrafiltration membrane   hollow fiber, pore size 0.01~ 0.1 micron	Removes 100% bacteria, microorganisms and partly viruses
	Removes cysts

## 4. LIFETIME INDICATOR SPECIFICATIONS.



4 in 1 filter Reset (L) :  
When indicator reaches 300 days for  
replacement, red LED flicking for  $\pm 5$  days  
(flicking every 0.5 sec. ).



2 in 1 filter Reset "R" :  
When indicator reach 360 days for  
replacement, yellow LED flicking  
for  $\pm 5$  days (flicking every 0.5 sec. ).



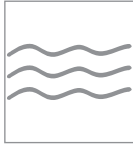
○ 4 in 1 filter Reset :  
Press reset button "L" for 5 seconds  
Red LED flicking 3 times. Reset done.



○ 2 in1 filter Reset :  
Press reset button "R" for 5 seconds  
Yellow LED flicking 3 times. Reset done.

# USER MANUAL rain<sup>+</sup>

## 5. INSTALLATION AND PRECAUTIONS.



The water filter can only be used with pre-filtered water from a water supply facility. The filter can not be used with water from unsafe water sources such as rivers and wells.



To reach an optimized and satisfying filter result the rain<sup>+</sup> should only be installed in houses with a pipe pressure between 1 and 4 bar.



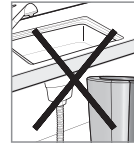
The water filter must be installed in a far distance to inflammable materials and heating sources to avoid deformation.



The water filter should only be installed inside the house.



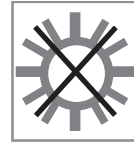
The filter can only be installed to the cold water supply with a water temperature between 4 and 35°C.



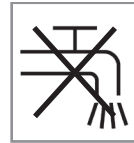
The water filter can only be installed as countertop type by using a diverter valve. It can not be used as under sink type.



The water filter should not be exposed to force or shock.



The water filter must be kept away or protected from direct light (e.g. sunlight).



Do not spill water on the water filter.

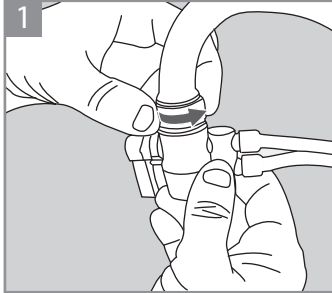


Do not open the filter during water flow.



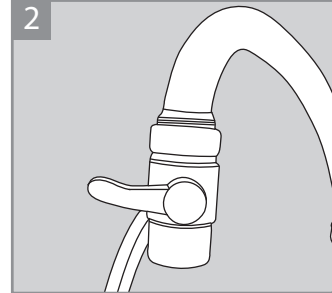
## 6. INSTALLATION GUIDELINES AND FILTER REPLACEMENT.

### INSTALLATION GUIDELINES



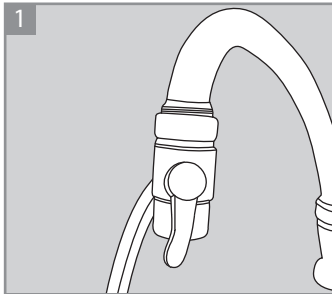
Connect the diverter valve to the faucet of your tap water supply. If a water saver is used, remove it and install the diverter valve instead. If needed use one of the 3 faucet adapters to connect the diverter valve to the faucet.

**⚠** Make sure that the diverter valve is connected properly, tight and straight to the faucet to prevent leakage.

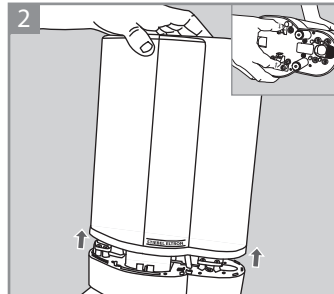


Open the faucet and the diverter valve and let the water flow for at least 10 minutes to clean the filter of residual particles and air bubbles. Then the water filter is ready to use.

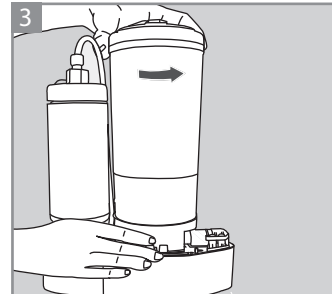
### FILTER 4 IN 1 REPLACEMENT



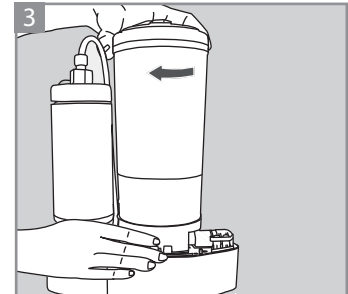
Close the faucet and the diverter valve.



Remove the top cover by pressing the two release slides at the bottom of the ejector.

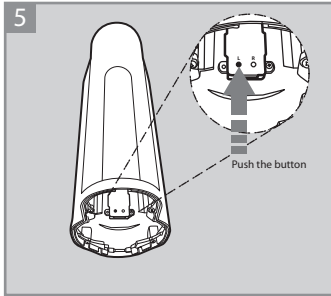


To change the 4 in 1 filter, turn the filter to the counter clockwise direction

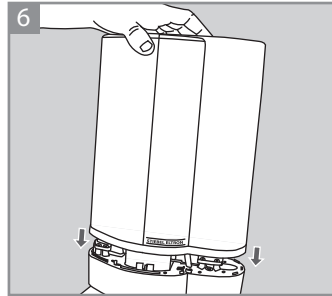


Insert in the new filter by the filter to clockwise direction.

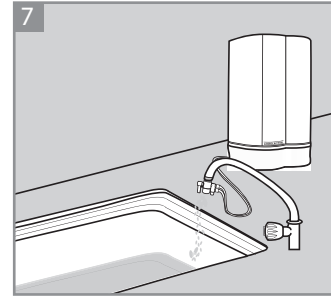
## 6. INSTALLATION GUIDELINES AND FILTER REPLACEMENT.



Reset lifetime for 4 in 1 cartridge. Press button "L" for 5 seconds. Red LED right will flicking 3 times. Reset done

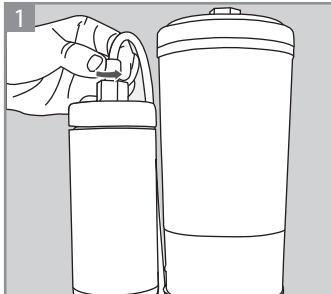


After Reset, close the cover



Open the valve and let water flow for at least 10 minutes to clean the filter of residual particles and air bubble. If you change both filters together, it is only needed to do this after you changed the 2 in 1 filter cartridge

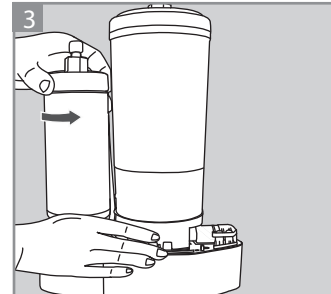
### FILTER 2 IN 1 REPLACEMENT



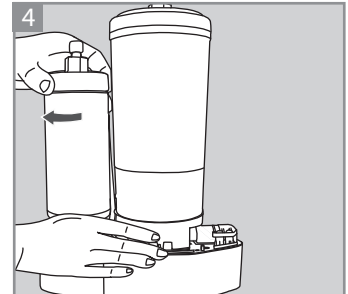
To change 2 in 1 filter, twists the cap on the filter to the counter clockwise direction



Take off the cap and disconnect the plastic pipe from the filter

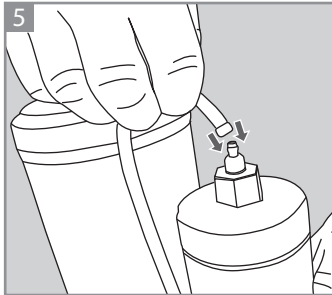


Twist the filter in the clockwise direction and take out the filter

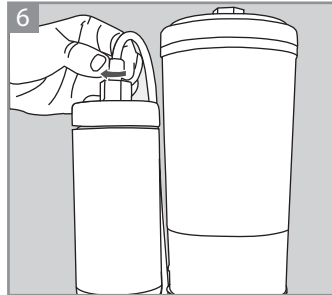


Insert the new filter

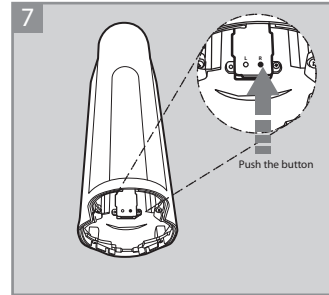
## 6. INSTALLATION GUIDELINES AND FILTER REPLACEMENT.



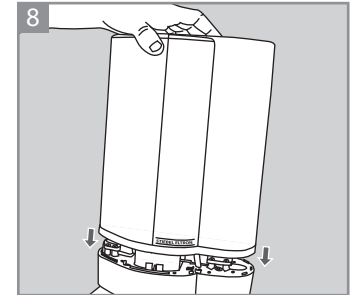
5 Connect the tube with the filter



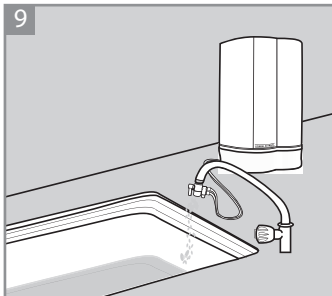
6 Tighten the cap to the filter



7 Reset lifetime for 2 in 1 filter cartridge.  
Press reset button "R" for 5 seconds  
Yellow LED light will flicking 3 times.  
Reset done.



8 Press the cover ass'y on the filter base



9 Open the valves and let the water flow for at least 10 minutes to clean the filter of residual particles and air bubbles. Now your water filter is ready to use.

# USER MANUAL rain+

## 7. TROUBLE SHOOTING.

Problems	Possible cause	Trouble shooting
Water leakage of the diverter valve.	The diverter valve is not connected properly, straight and tight to the screw of the faucet.	Make sure the diverter valve or adapter is connected properly, straight and tight to the screw of the faucet.
Black color or black particles in the water.	The rain water filter contains carbon powder. After installation small particles can occur in the water.	After installation or filter exchange let the water flow for about 10 minutes to clean the filter from possible small residual particles of carbon.
Slow water flow.	The lifetime of the filter is finished	Replace the filter cartridges.
	The filter is clogged.	Replace the filter cartridges.
Noise in the system.	There are air bubbles in the system.	After installation let the water flow for about 10 minutes to remove all air from the system.
Unusual water or chlorine taste and bad odor.	The cartridge does not remove chlorine and other contaminants from the water. The life time of the 4 in 1 filter cartridge is finished.	Replace the 4 in 1 filter cartridge.
	You have not used the filter for a while and some sediments and contaminants developed a bad smell in the system.	Open the valves and let the water flow for at least 5 minutes.
Water leakage.	Tubes and fittings might not be connected properly.	Check every connection to be inserted in the proper depth.
No water flow.	The diverter valve is closed.	Open the diverter valve.
Lights blinking Red or Yellow.	Lifetimes of filter is finished.	Change the filter and press Reset.
Lights keep blinking Red or Yellow even after Reset.	PCB malfunction.	Contact Stiebel Eltron Call Center.
No light blinks after 10 months (4 in cartridge) or 12 months (2 in 1 cartridge).	Batter is finished.	Always change the battery when changing 2 in 1 filter cartridge and press Reset.
	PCB malfunction	Contact Stiebel Eltron Call Center.







GERMANY

STIEBEL ELTRON INTERNATIONAL GMBH | DR.-STIEBEL-STRASSE | 37603 HOLZMINDEN  
PHONE +49 5531 7020 | E-MAIL INFO@STIEBEL-ELTRON.COM | WWW.STIEBEL-ELTRON.COM

ประเทศไทย

บริษัท สตีเบล เอลทรอน เอเชีย จำกัด เลขที่ 469 หมู่ 2 ตำบลคลองจิก อำเภอบางปะอิน จังหวัดพระนครศรีอยุธยา 13160  
โทร + 66 35 220088 (10 สายอัตโนมัติ)  
E-MAIL INFO@STIEBELELTRONASIA.COM | WWW.STIEBELELTRONASIA.COM

**STIEBEL ELTRON**