

# REMOTE PILOT ENCLOSURE - RCP SERIES

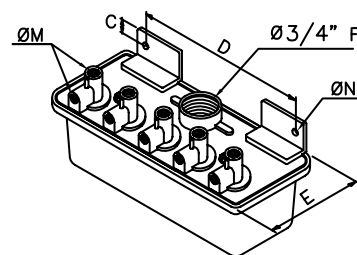
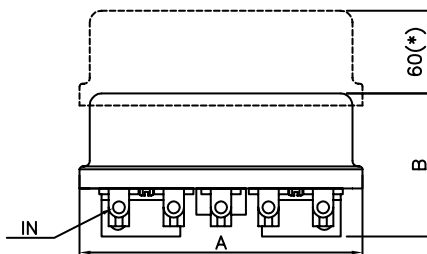


### FEATURES

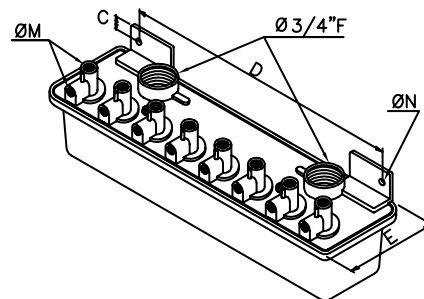
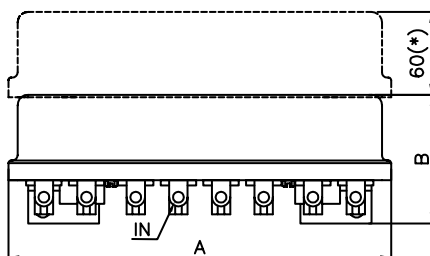
Fluids	Non-lubricated filtered air
Operating pressure	between 0.5 and 7.5 bar
Operating temperature	-20°C; +80°C
with heating element	-40°C +80°C
Cover and base	Die-cast aluminium
Pilot core	Stainless steel
Screws and bolts	Stainless steel
Coil insulation	Class H
Protection	IP66
Standard voltage	230 -110 - 24V
	50-60 Hz 19 VA
	24VDC 15W
Maximum Valve Distance	3 Metres

(\*) Clearance for opening the cover

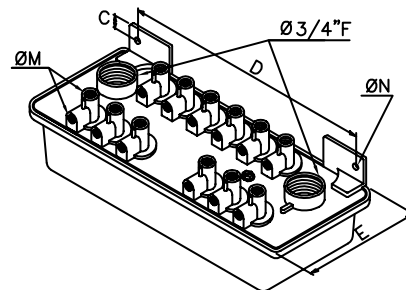
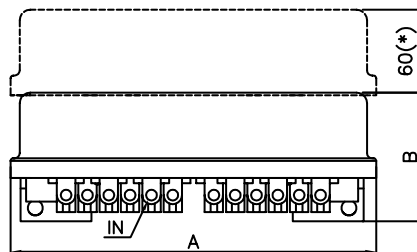
### RCP5



### RCP8



### RCP12



MODEL	A	B	C	D	E	ØM	ØN	Weight (kg)
RCP5	210	98	10	156	100	1/8"	11	1.7
RCP8	333	98	10	267	100	1/8"	11	3.2
RCP12	306	97	10	237	152	1/8"	11	4.4