

FXEx EXPLOSION-PROOF ELECTRIC ACTUATOR

General description

- > FXEx explosion-proof electric actuator is our latest developed ultra-compact device, controlling the valve's open and close like butterfly valves, ball valves, plug valves and other valves with 90° rotation,
- > Widely used in the production, transportation and storage like coal, petroleum, metallurgy, chemical industry, food processing, military and other industrial productions where the places have explosion gas.

**The smallest
electric actuator
with explosion proof**

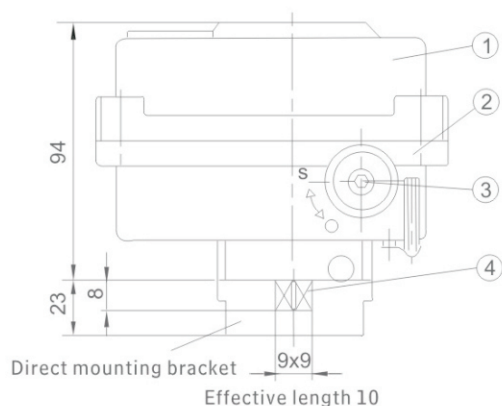


Patent No: 201510994845.1

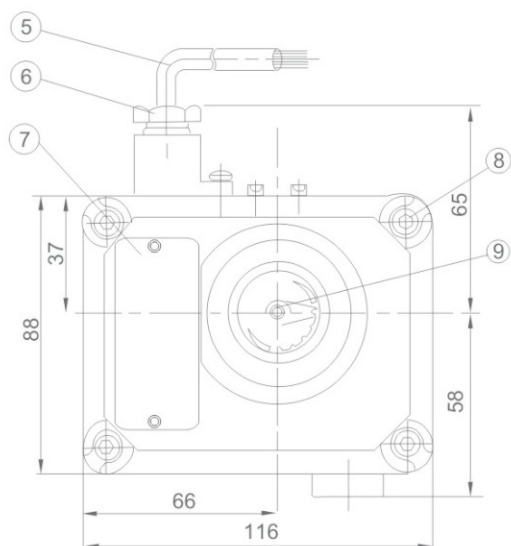
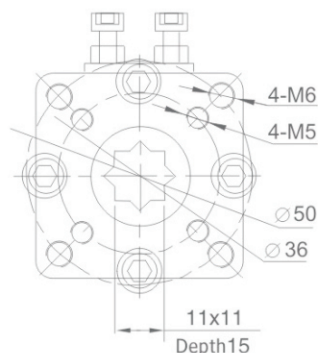
Patent No: 201521102117.7



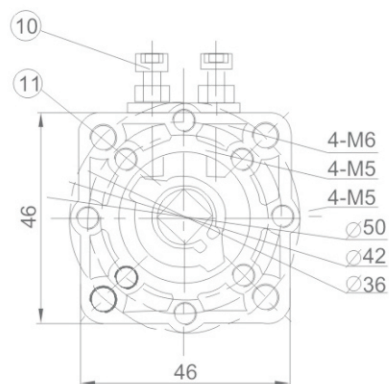
FXEx EXPLOSION-PROOF ELECTRIC ACTUATOR



Mounting base for ISO5211 standard

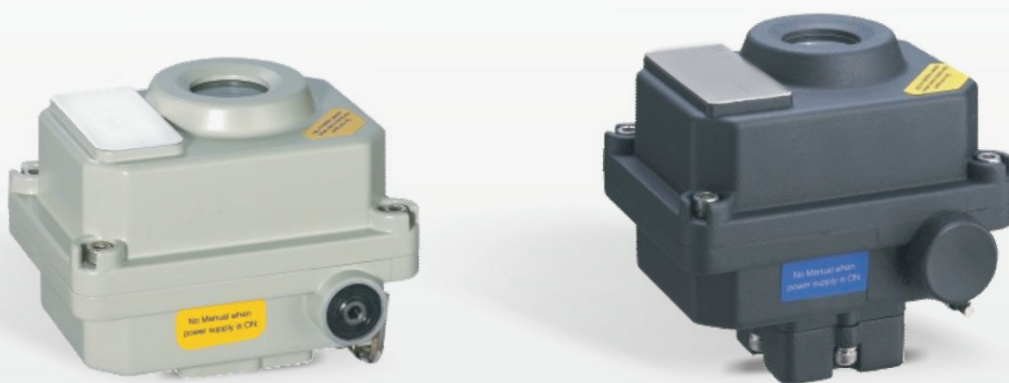


Mounting base for bare shaft standard



NO.	Name	Materials/Specifications
1	Indication cover	ADC12
2	Housing	ADC 12
3	Handle lever hole	Hexagonal hole, across flats: 4mm
4	Drive shaft	303
5	Cable	0.3X7 cable with 1m
6	Cable gland	45#
7	Nameplate	Stainless steel
8	Captive cover bolts	M5x18
9	Indicator	0-90°
10	Mechanical stopper	M5×25
11	Mechanical block	Alloy

FXEx EXPLOSION-PROOF ELECTRIC ACTUATOR

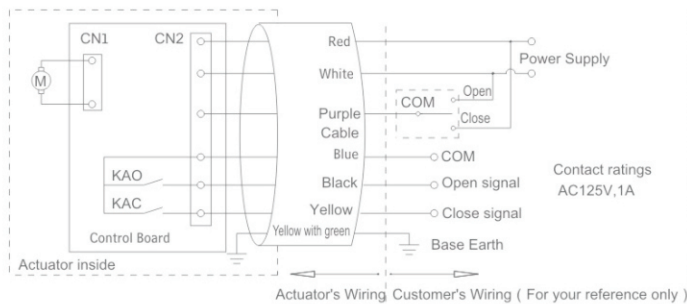


Item		FXEx-02D	FXEx-02S FXEx-02B2	FXEx-02A
Power supply		DC12V; DC24V	AC24V; AC100~240V	DC24V; AC100~240V
Output torque		18N · m		24N · m
Working time		20 seconds		20 seconds
Motor consumption		6.8W		6.8W
Rated current	18N·m	0.25A(24VDC/AC) ; 0.45A(DC 12V) ; 0.08A(A 100~240V)		
	24N·m	0.42A(24VDC/AC) ; 0.79A(DC 12V) ; 0.11 A(AC100~240V)		
Quiescent Current		—	≤20mA	≤25mA
Rotary angle		0~90°		
Control type		Fully open. Fully closed	Fully open. Fully closed	4-20mA/0-10VDC
Feedback signal		Dry contact signal	Dry contact signal	4-20mA/0-10VDC
Indicator		with arrow	with arrow FULL OPEN:RED LED FULL CLOSE:GREEN LED	with arrow
Enclosure protection		IP65		
Basic error		1%		
Insulation resistance		≥100MΩ		
Dielectric strength		500VAC/1min(12V、24V) 1500VAC/1 min(100-240V)		
Cable		7 x 0.3mm ² with 1m cable		
Mechanical position limit		Mechanical stopper for close and open		
Mounting orientation		360°		
Manual		With handle lever		
Weight		≈0.8kg		
Product color		black,grayish white (other colors customized)		
Housing material		ADC12		

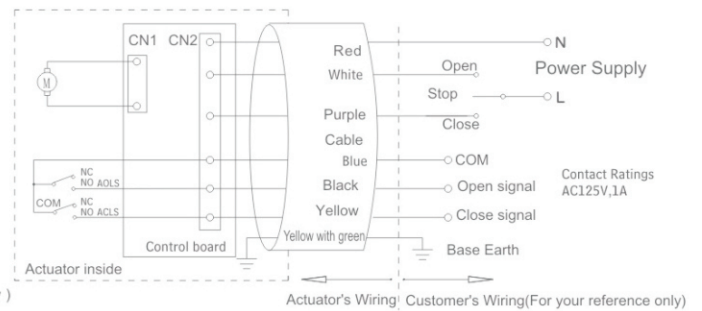
FXEx EXPLOSION-PROOF ELECTRIC ACTUATOR



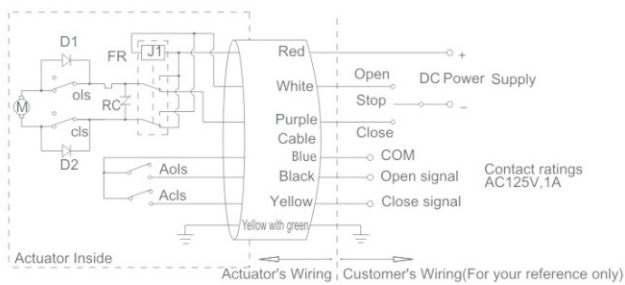
FXEx-02B2 wiring drawing



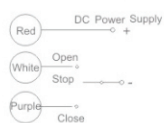
FXEx-02S wiring drawing



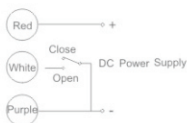
FXEx-02D wiring drawing



External wiring option 1 :
Possible to stop at intermediate



External wiring option 2 :
Two-point control



External wiring option 3 :
Positive and Negative Switch



FXEx-02A wiring drawing

