

Standard Cylinder

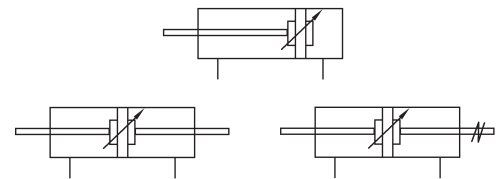
ISO International Standard Aluminum Alloy Cylinder

- Front and rear caps are finished by aluminum alloy die-casting, CNC mechanically processed with high precision.
- Aluminum tube is imported ,stainless forever with friction & corrosion resistance.
- Adopt imported none lubrication,long time service and no need lubrication maintenance.
- Unique cushion technique makes smooth action.
- May add the sensor equipment to easiky control.
- In terms of DNC series ,pull-rod is hidden inside.



Specification:

Mode	32	40	50	63	80	100	125
Acting type	double acting						
Series	DNC,DNCD						
Fluit	air						
Operating pressure(Mpa)	0.1~1						
Operating speed(mm/sec)	50~500						
Ambient temperature(°C)	-10~70°C						
Cushion	adjustable cushion at both ends						
Oil	Provided or not						
Port size	1/8"	1/4"	3/8"				1/2"



How to order:

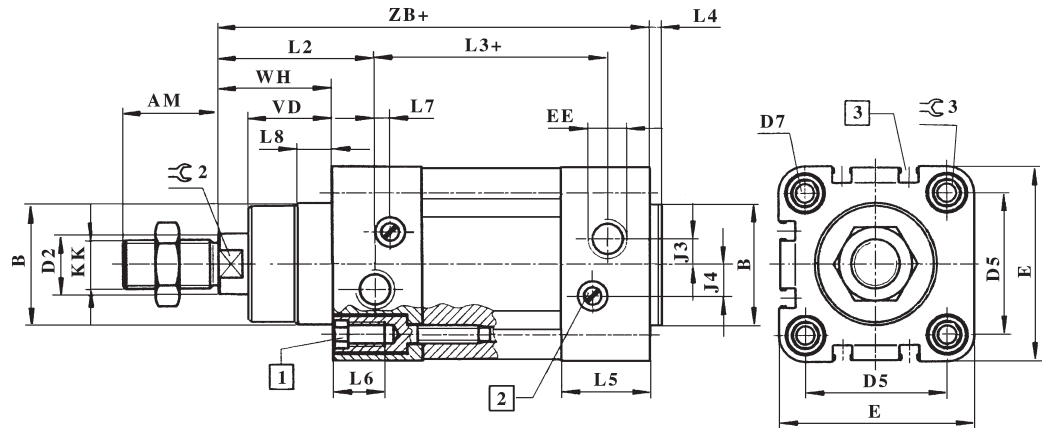
DNC	50	×	100	FA	S	2
Series	Bore		Stroke	Mounting type	with magnet	sensors
DNC standard cylinder DNCD double axial cylinder	φ 32 φ 40 φ 50 φ 63 φ 80 φ 100 φ 125			blank (standard)	S:with magnet blank without magnet	1:1 2:2
				FA		
				CB		
				FB		
				LB		
				CA		
				TC		

Stroke:

bore \ stroke	25	50	75	100	125	150	175	200	250	300	350	400	450	500	Max.stroke
32	●	●	●	●	●	●	●	●	●	●	●	●	●	●	1000
40	●	●	●	●	●	●	●	●	●	●	●	●	●	●	1200
50	●	●	●	●	●	●	●	●	●	●	●	●	●	●	1200
63	●	●	●	●	●	●	●	●	●	●	●	●	●	●	1500
80	●	●	●	●	●	●	●	●	●	●	●	●	●	●	1500
100	●	●	●	●	●	●	●	●	●	●	●	●	●	●	1500
125	●	●	●	●	●	●	●	●	●	●	●	●	●	●	1500

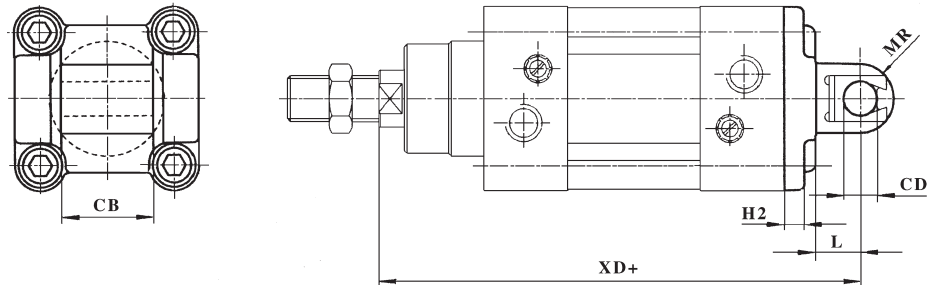
Standard cylinder

DNCseries

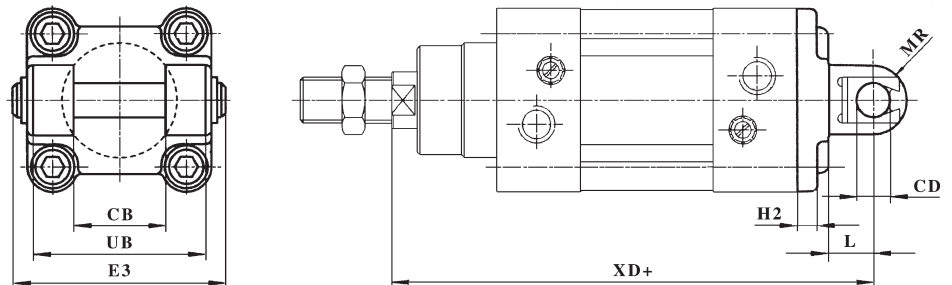


bore mm	AM	B φ d11	D φ f8	D5	D7	E	EE	J3	J3	KK	L2	L3	L4	L5	L6	L7	L8	∅2	∅3	VD	WH ± 1	ZB +0.8
32	22	30	12	32.5	M6	45	G1/8	6	5.2	M10x1.25	41.6	62.8	4	25.1	16	3.3	10	10	6	18	26	120
30	24	35	16	38	M6	54	G1/4	8	6	M12x1.25	44	77	4	29.6	16	3.6	10.5	13	6	21.5	30	135
50	32	40	20	46.5	M8	64	G1/4	10	8.5	M16x1.5	51	78	4	29.6	17	5.1	11.5	17	8	28	37	143
63	32	45	20	46.5	M8	75	G3/8	12.4	10	M16x1.5	54	87	4	35.6	17	6.6	15	17	8	28.5	37	158
80	40	45	25	72	M10	93	G3/8	12.5	8	M20x1.5	62.4	95.2	4	35.9	17	10.5	15.7	22	6	34.7	46	174
100	40	55	25	89	M10	110	G1/2	11.8	10	M20x1.5	69.8	100.4	4	38.8	17	8	19.2	22	6	38.2	51	189
125	54	60	32	110	M12	134	G1/2	13	8	M27x2	83	124	6	44.7	22	14	20.5	27	8	46	65	225

CA-Single-ear mounting type



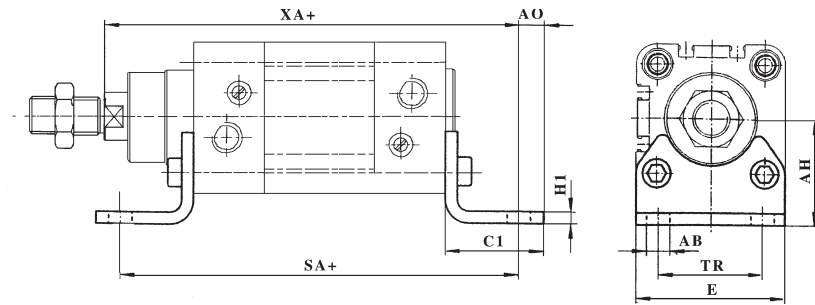
CB-Double-ear mounting type



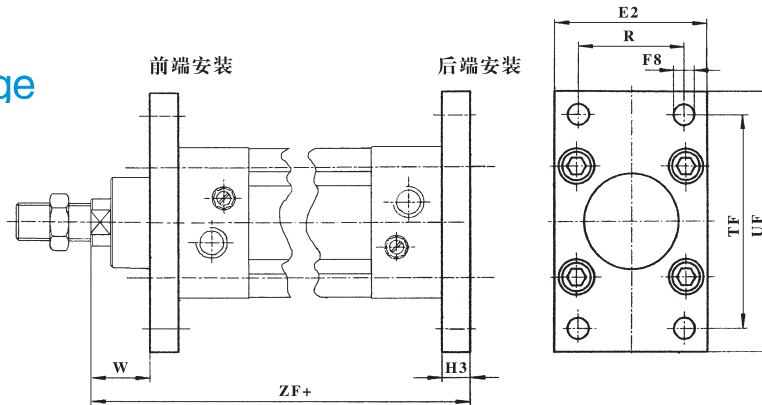
bore mm	CB	CD φ	CN φ	EN	ER	EU	H2	L	L13	MR	R1	U1	UB	XD
32	26	10	10	55	14	15	10.5	6	13	13	10	34	45	142
30	28	12	12	63	16	17	12	6	16	16	12	40	52	160
50	32	12	16	71	21	20	15	7	16	18	12	45	60	170
63	40	16	16	83	21	22	15	7	21	21	16	51	70	190
80	50	16	20	103	25	27	18	10.5	22	22	16	65	90	210
100	60	20	20	127	25	29	18	10.5	27	27	20	75	110	230
125	70	25	25	148	37	39	25	10.5	30	30	25	95	130	275

Standard cylinder

LB-Foot bracket mounting type

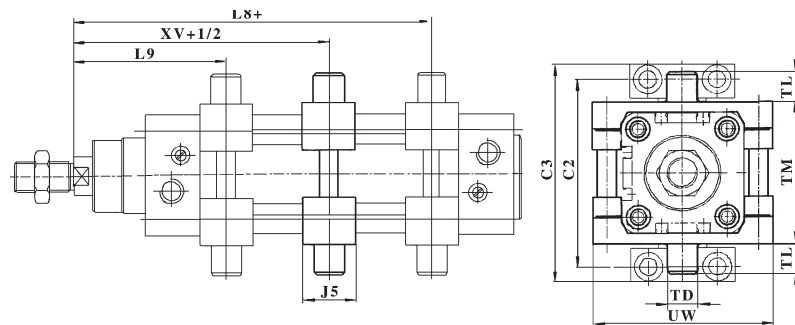


FA、FB-Front & rear flange mounting type



耳轴支撑 型号 LNZ-...
(2个耳轴)

TC-Midst mounting type



bore mm	AB φ	AH	AO	C1	C2	C3	E	E2	FB φ H13	G4	G5	H1	H3	H7	J5	J6	L8	L9	L10	L11
32	7	32	6.5	30.5	71	86	45	50	7	32	46	5	10	30	30	16	79.9	66.1	18	128
30	10	36	9	37	87	105	54	55	9	36	55	5	10	36	32	20	89.4	75.6	20	145
50	10	45	10.5	41.5	99	117	64	65	9	36	55	6	12	36	34	24	94.4	83.6	25	155
63	10	50	12.5	44.5	116	136	75	75	9	42	65	6	12	40	41	24	101.9	93.1	25	170
80	12	63	15	56	136	156	93	100	12	42	65	6	16	40	44	28	118.1	103.9	32	188
100	14.5	71	17.5	58.5	164	189	110	120	14	50	75	6	16	50	48	38	126.2	113.8	32	208
125	16.5	90	22	67	192	217	131	150	16	50	75	8	20	50	50	50	155.3	134.7	40	250

bore mm	R	S7 φ	S8 φ	SA	T4	T5	T6	T7	ID φ e9/H7	TF	TL	TM	TR	UF	UW	W	XA	XV	ZF
32	32	6.6	11	142	15	18	6.8	10.5	12	64	12	50	32	80	65	16	144	73	130
30	36	9	15	161	18	21	9	12	16	72	16	63	36	90	75	20	163	82.5	145
50	45	9	15	170	18	21	9	12	16	90	16	75	45	110	90	25	175	90	155
63	50	11	18	185	20	23	11	13	20	100	20	90	50	125	105	25	190	97.5	170
80	63	11	18	210	20	23	13	13	20	126	20	110	63	130	130	30	215	110	190
100	75	14	20	220	25	28.5	16	16	25	150	25	132	75	145	145	35	230	120	205
125	90	14	20	250	25	28.5	16	16	25	180	25	160	90	175	175	40	270	145	245