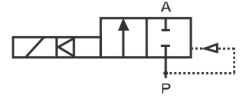
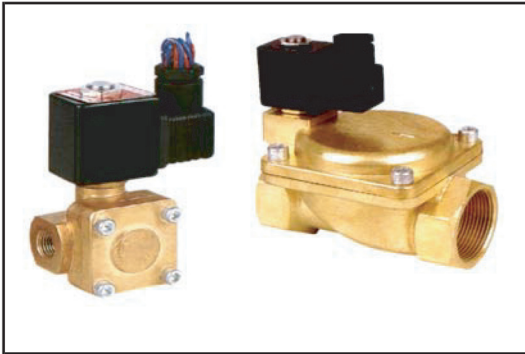


0927 Series, 0955 Series

2/2 Way Solenoid Valve. Normally closed,
Diaphragm Port sizes 1/4" to 2"



Compact and good appearance

Normal open (0955 series) and Normal close (0927 series)

Diaphragm structure, big orifice, big flow rate

Ambient Temperature $-5^{\circ}\text{C} + 50^{\circ}\text{C}$

Medium Temperature $0^{\circ}\text{C} + 80^{\circ}\text{C}$: brass body : seal material

OVERALL DIMENSIONS :

Model	(G)	A	B	C	E	H	Pressure (Bar)
927000.0201	G1/4	47	33.5	22	55	113	0.07~16
955105.0201	G1/4	47	33.5	22	55	101	0.07~16
927100.0201	G3/8	47	33.5	22	55	113	0.07~16
955205.0201	G3/8	47	33.5	22	55	101	0.07~16
927200.0201	G1/2	47	33.5	22	55	113	0.07~16
955305.0201	G1/2	47	33.5	22	55	101	0.07~16
927300.0201	G3/4	66	45.5	30	81	130	0.07~16
955405.0201	G3/4	66	45.5	30	81	118	0.07~16
927400.0201	G1	66	45.5	30	91	130	0.07~16
955505.0201	G1	66	45.5	30	91	118	0.07~16
927500.0201	G1 1/4	92.5	47	33.5	132	157	0.1~16
955605.0201	G1 1/4	92.5	47	33.5	132	145	0.1~16
927600.0201	G1 1/2	92.5	47	33.5	132	157	0.1~16
955705.0201	G1 1/2	92.5	47	33.5	132	145	0.1~16
927700.0201	G2	112	55	39.5	160	176	0.1~16
955805.0201	G2	112	55	39.5	160	165	0.1~16

