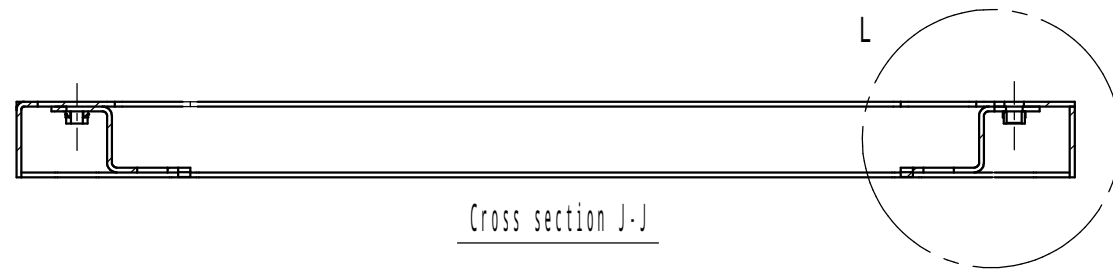


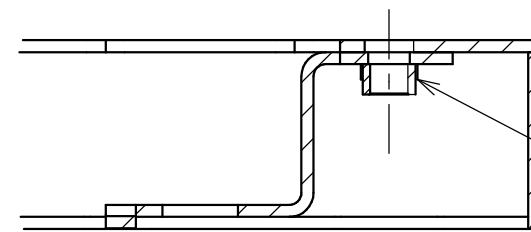
NOTE

- 1.The drawing holder is attached with screws.
Storage dimensions: W235 x H250 x thickness 38
- 2.Eyebolts are not assembled to body, they are attached as accessories.

Enclosure specification				Model Drawing plate A3 scale	E 25 - 719A						
Type	Indoor use, Floor standing, E25-719A				1/3						
Body	Steel	t 2.3									
Door/ Cover	Steel	t 2.3									
Mounting plate	Steel	t 2.3									
Color	Standard / Light beige (5Y7/1)			Scale	1:20	Design	SUZUKI	Draw	NGUYEN	Check	SUZUKI
IP	IP5X (Category 2)										
Weight	111.0 kg			Date: 25 / Mar. / 2021							



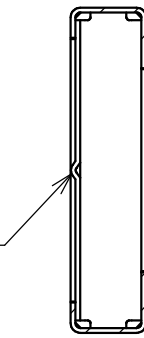
Cross section J-J



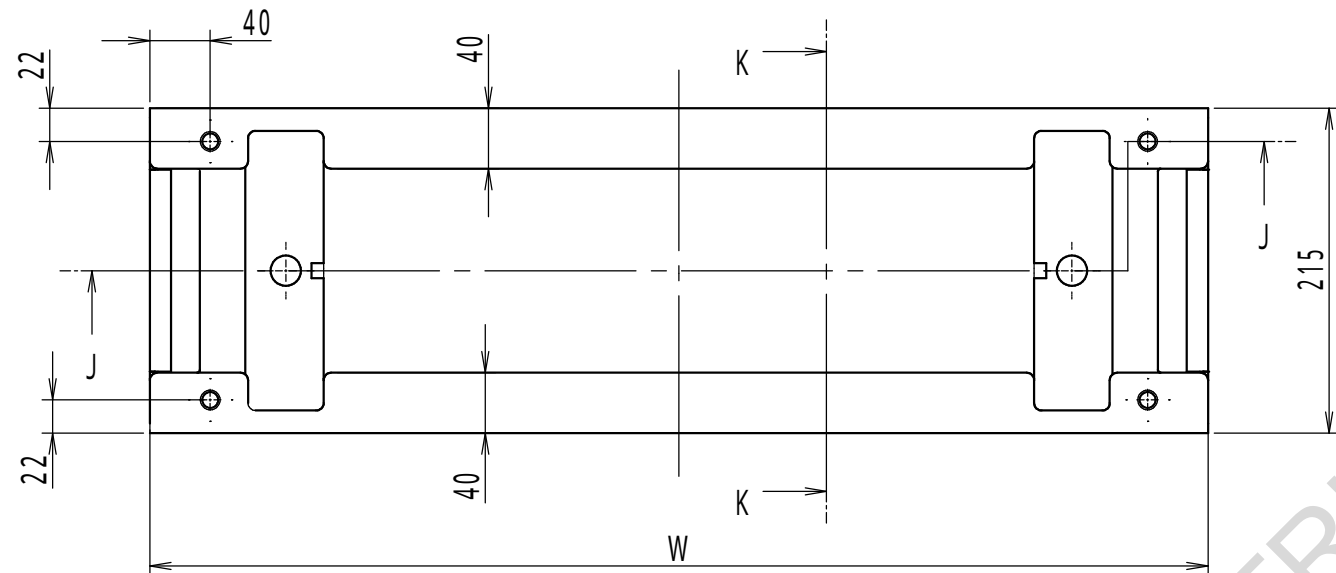
Detail L

4-M10
(body and base mounting screw)

The protruding part is
contact surface with ground.



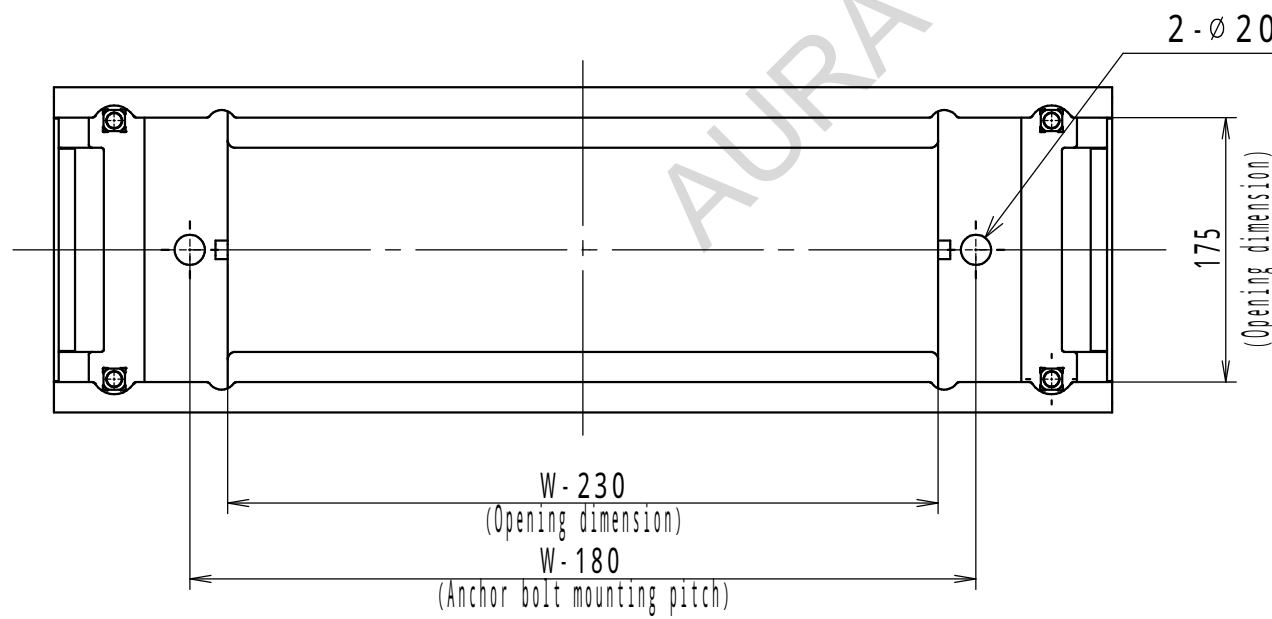
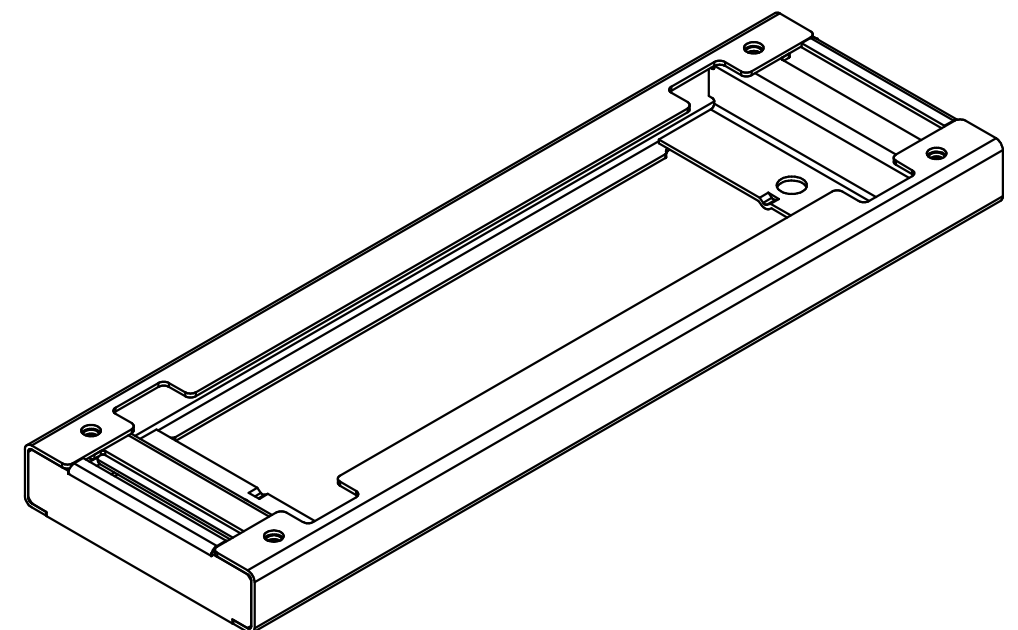
Cross section K-K



Base and body mounting surface



There are cuts for drain opening
at 4 corners on left and right.



Bottom

NOTE

- 1.W is width dimension of the product.
- 2.Take measures against falling down, in addition to anchor bolts.

Enclosure specification		Model	E Base (1)						
Type	-								
Base	Steel t3.2	Design Number							
Color	Standard / Light beige (5Y7/1)								
-	-	A3 scale	Scale	Design	YAMAZAWA	Draw	NGUYEN	Check	SUZUKI
-	-								
-	-								
-	-								
		Date: 25 / Mar. / 2021							