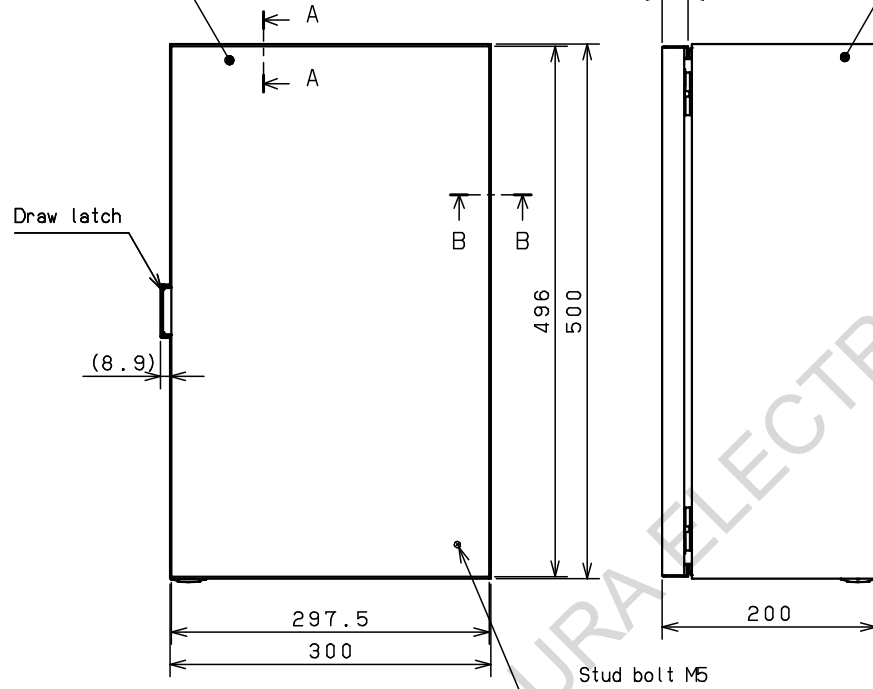
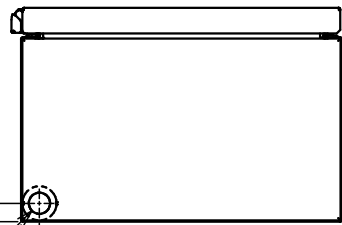


Door
(Steel t1.2)



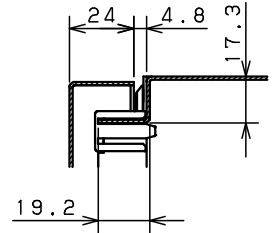
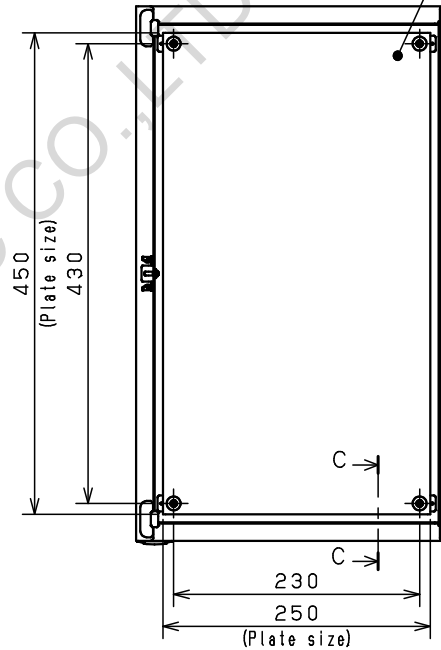
(Inside of door for electrical continuity)



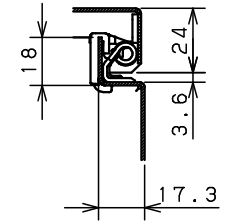
Hole cap $\varnothing 32$
(Hole size $\varnothing 20$)

Dimensions: 17.2, 17.2

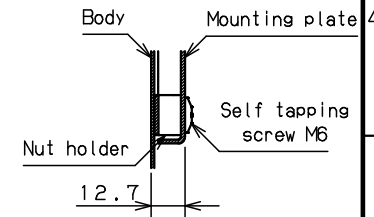
Body
(Steel t1.2)



CROSS SECTION A-A
1:2



CROSS SECTION B-B
1:2



CROSS SECTION C-C
1:2

| | | | | | | | | |
|----------------|--------------------------------------|------------------------------|--|----------------|------------------|---------|---------|---------|
| Model | Wall-mounting, indoor-use, CH20-35TH | | | Name/Type | CH20-35TH | | | |
| Body | Steel sheet, t1.2 | | | | | | | |
| Door | Steel sheet, t1.2 | | | Drawing number | - / 1 / 1 | | | |
| Mounting plate | Steel sheet, t1.5 | | | | | | | |
| Base | - | | | A3 scale | Scale | Design | Drawing | Check |
| Color | Outside | Light beige (5Y7/1) (Smooth) | | | 1:5 | SUPAKIT | SUPAKIT | KONISHI |
| IP | IP4X | | | Date | 13 / Oct. / 2021 | | | |
| Weight | 8.1 Kg | | | | | | | |