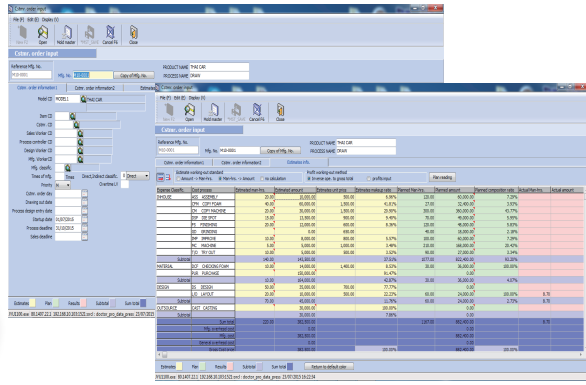


System Architecture

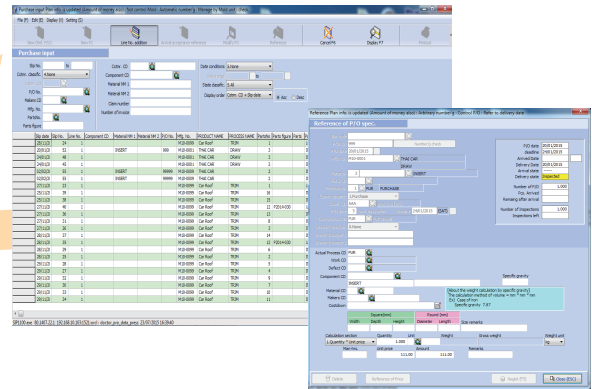
PLAN



Input Order

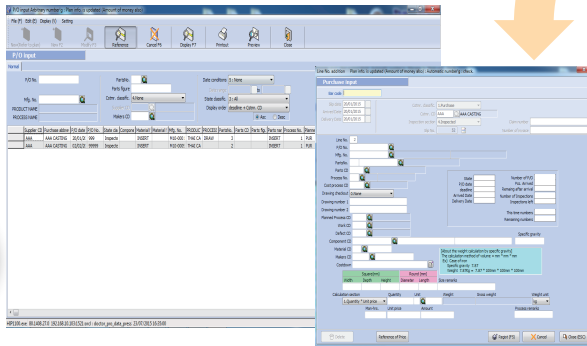
Estimated Cost

Input data such as Job No., Customer, Sales, etc. To estimate cost in order to provide the quotation which the system synchronize with Dr.Koutei effectively.



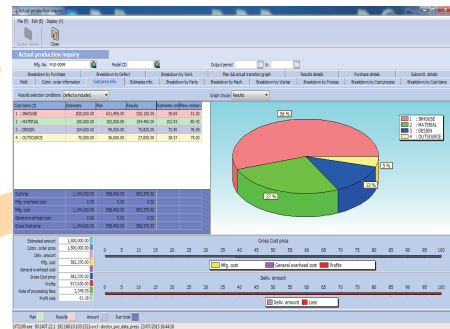
Input P/O

Input Purchase order data, Outsourcing such as P/O No., Material size and type of process that the system synchronize with Dr.Koutei cause the purchasing department can see the information immediately.



Input purchasing data

Input data when material received such as actual price, actual size, material inspection, etc. Then the system notify material status to planning department immediately.



Cost Report

The system can generate multiple type of reports whatever production cost, monthly production cost, productivity of workers or machines. All reports can be exported in to CSV file to use in Microsoft Excel or any compatible spreadsheet.

Actual work sheet

Actual production

Cost summary sheet

Actual Production Inquiry

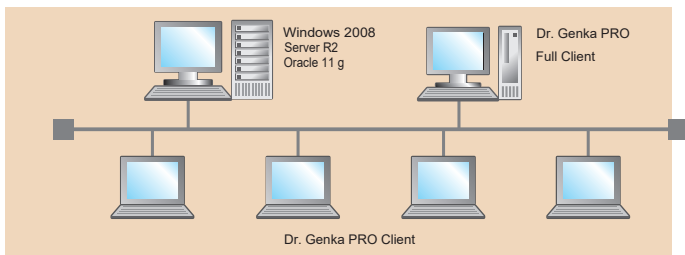
Display the reports as graph to compare each production cost such as material cost, outsourcing cost, designing cost, etc. Then the system calculates estimated profit by comparing estimated cost with actual cost.

DO

CHECK

ACTION

System Structure Example



System Requirement

	CPU	Memory	Disk	Other
Server	Intel Xeon/Pentium Process 2.0GHz Up	4GB up	RAID 5 HotSwap support 140GBx4	Backup drive UPS
Full Client	Intel Core Process Up	2GB up	Free Space 100 GB Up	Windows XP Professional
Client		1GB up	Free Space 10 GB Up	Windows 7,8 Professional

Contact Us



496-502 Amarin Tower 16th Floor Unit 2, Ploenchit Road, Lumpini, Pathumwan Bangkok, 10330 Thailand TEL.+66(0)2651-8174 , FAX +66(0)2651-8175 <https://www.cimthailand.co.th>