

# Battery Tester/ACR Meter

## High-Voltage Battery Tester TB-3564 Series

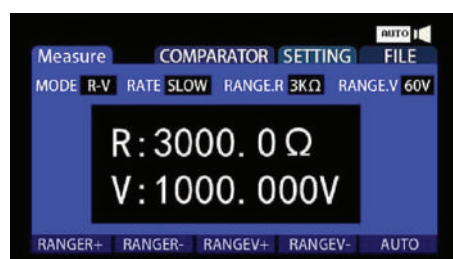
### Product description:

TB-3564 series is a high-performance tester developed by Hepu Electronics based on it's rich experience in lithium battery voltage internal resistance testing for many years, target the high-voltage internal resistance testing needs of large battery packs and battery clusters. It meets the requirements of ultra-high voltage test range+high-precision internal resistance test. This product has high resolution, good stability, short test cycle, exquisite appearance, powerful functions, rich interfaces and is suitable for product development and automated production lines.

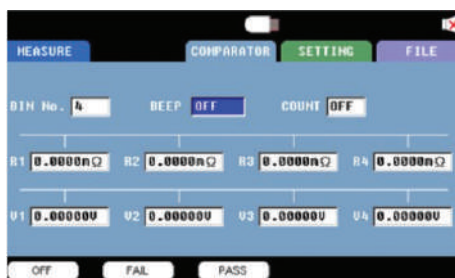


### Features

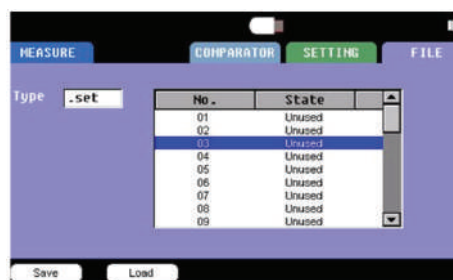
- Resistance minimum resolution 0.1uΩ and maximum range is 3.1kΩ.
- Ultra-wide voltage test range 10μV-1500V (TB-3564B only)
- Minimum test cycle only 10mS
- Arc suppression technology and super anti-static design improve test safety
- Rich standard interfaces suitable for automated test equipment
- Strong anti-interference ability
- Automatic battery test function



TB-3564 series Battery Tester Operation interface



Battery Tester Beeper Configuration



Battery Tester Choosing Comparator Record

### Specifications

Model	TR-3564	TR-3564A	TR-3564B
Test Parameters	AC resistance, DC voltage		
Resistance	Accuracy	0.5% (3mΩ); 0.5% (30mΩ); 0.3% (≥300mΩ)	
	Range	0.00 01 mΩ ~ 31000Ω	
Voltage	Accuracy	0.01 %	
	Range	0.00001V ~ 400.000V	0.00001 V ~ 1000.00 V
Signal Source	Measuring current frequency : 1 kHz±0.2Hz, Open circuit voltage : <25V, Test current : <100mA		
Range	3 mΩ/ 30mΩ/ 300mΩ/ 3Ω/ 30Ω/ 300Ω/ 3 kΩ, 7 levels full range automatic or manual test mode		
Test speed	Ultra fast : 100 times/s, Fast : 50 times/s, Medium : 20 times/s, slow : 3 times/s		
Calibration method	Short circuit reset within full range		
Comparator	30 groups of records, 4-level sorting, level counting		
Trigger Mode	Internal ( INT ), Manual ( MAN ), External ( EXT ), automatic ( AUT) and Bus		
Interface	RS-232/RS-485, LAN, I/O port		
Power Input	100 ~ 256VAC, 50 ~ 60Hz,		
Power Consumption	15VA		
Dimension (LxWxD)	325mm x 215mm x 96.5mm		
Weight	3kg.		

### Ordering Informations

- TB-3564** : 400Vdc/3.1kΩ Battery Tester
- TB-3564A** : 1000Vdc/3.1kΩ Battery Tester
- TB-3564B** : 1500Vdc/3.1kΩ Battery Tester

### Standard Accessories :

- User Manual
- Communication cable
- PB36 connector
- Four-terminal Test clip
- Power cable