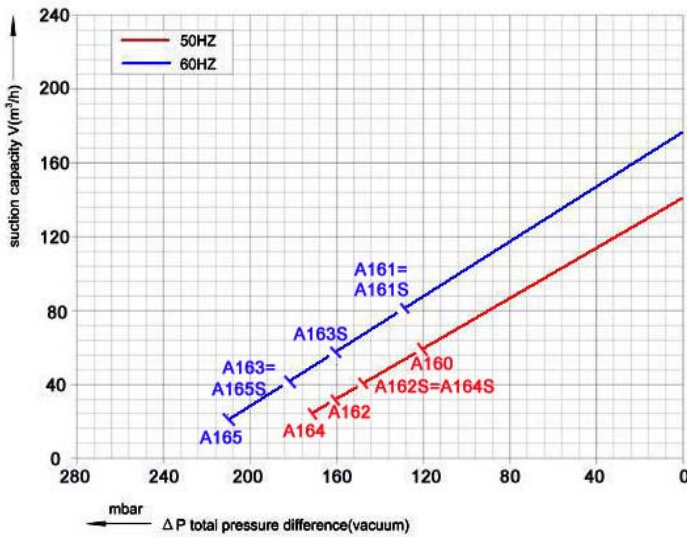




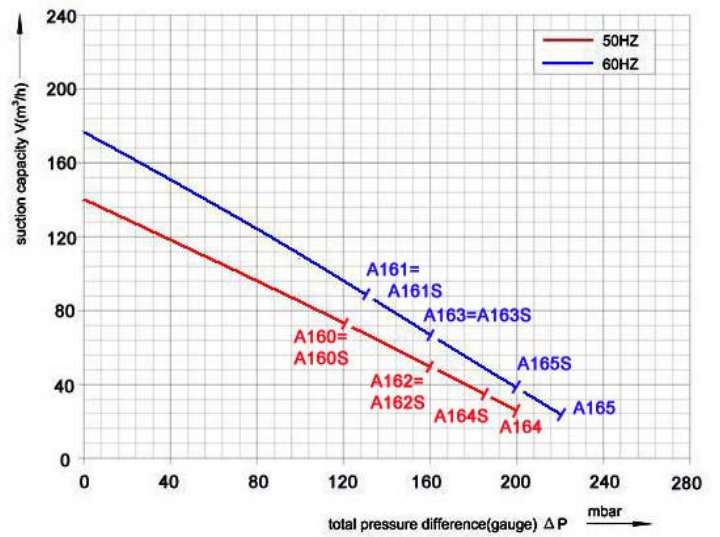
GREENCO SINGLE STAGE RING BLOWER

2RB 410 SERIES

Performance curve for vacuum pump



Performance curve for Compressor

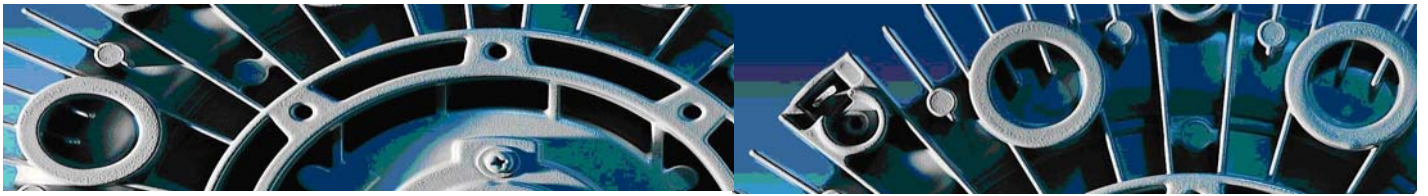


Selection and ordering data

TYPE FOR 2RB 410 SERIES

curve No	MODEL ▪ In stock	Single double stage	Freq Hz	Output power Kw	voltage V	Rated current A	Max airflow m3/h	Max static suction mbar	Max static pressure mbar	Noise dB(A)	Dimension L X W X H mm	weight Kg
A160	• 2RB 410 H06	single	50	0.7	200-240△ 345-415Y	3.8△/2.2Y	145	-120	120	63	269 X 285 X 302	13
A161			60	0.83	220-275△ 380-480Y	3.75△/2.15Y	175	-130	130	64		13
A162	• 2RB 410 H16		50	0.85	200-240△ 345-415Y	4.2△/2.4Y	145	-160	160	63	292 X 285 X 302	15
A163			60	0.95	220-275△ 380-480Y	4.0△/2.3Y	175	-160	160	64		15
A164	• 2RB 410 H26		50	1.3	200-240△ 345-415Y	6.6△/3.8Y	145	-170	200	63	292 X 285 X 302	16
A165			60	1.5	220-275△ 380-480Y	6.9△/4.0Y	175	-210	220	64		16
A160S	• 2RB 410 A01	single	50	0.7	200-240V	4.5	145	-120	120	63	269 X285 X 302	15
A161S			60	0.83	200-240V	5.6	175	-130	130	64		15
A162S	• 2RB 410 A11		50	0.85	200-240V	5	145	-160	160	63	292 X 285 X 302	16
A163S			60	0.95	200-240V	5.8	175	-160	160	64		16
A164S	• 2RB 410 A21		50	1.3	200-240V	7.3	145	-170	200	63	292 X 285 X 302	17
A165S			60	1.5	200-240V	7.8	175	-210	220	64		17





GREENCO 2RB type can be applied both as vacuum pump and compressor in continuous operation over the total stated performance curve range. The motors are available as standard for the input voltage range of 50 and 60 Hz and for protection category IP 54 as well as approved for EC and ROHS.

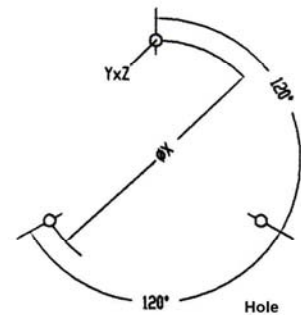
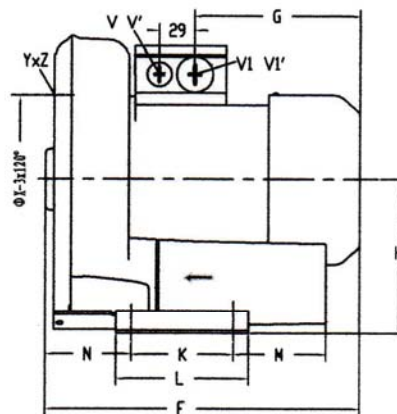
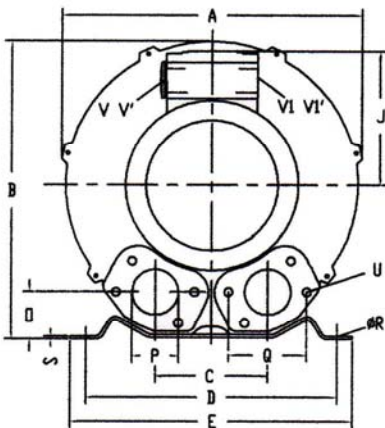
This motors are designed according to the DIN EN 60 034 / IEC 34-1 and temperature class F.

For the three phase machines the tolerances +/- 10% for fixed voltage and for +/- 5% voltage range

The single phase machines are designed with a +/- 5% tolerances. If only 90% of the maximum allowed pressure will be used for continuous operating then the allowed voltage range add to +/- 10%.

The frequency tolerances is maximum +/- 2%.

Installation for dimension



MODEL	phase	Curve	A	B	C	D	E	F	G	H	J	K	L	M	N	O	P	Q	ØR
2RB410 A01	1	A160s/161s	285	302	115	225	255	269	129	154	120	95	130	70	75	46	G1½	68	12
A11	1	A162s/163s						292	156										
A21	1	A164s/165s																	
2RB410 H06	3	A160/161						269	129										
H16	3	A162/163						292	153										
H26	3	A164/165																	
MODEL	phase	Curve	S	U	V	V'	V1	V1'	Y x Z	X-holes	ØX								
2RB410 A01	1	A160s/161s	3	M6 x 19	M6 x 1.5	M25 x 1.5	M25 x 1.5	M16 x 1.5	M6 x 15	0°/120°/240°	Ø174								
A11	1	A162s/163s																	
A21	1	A164s/165s																	
2RB410 H06	3	A160/161																	
H16	3	A162/163																	
H26	3	A164/165																	

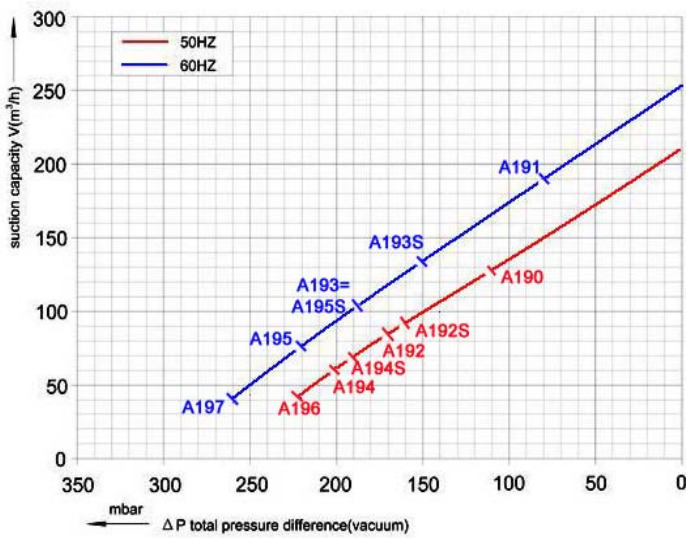




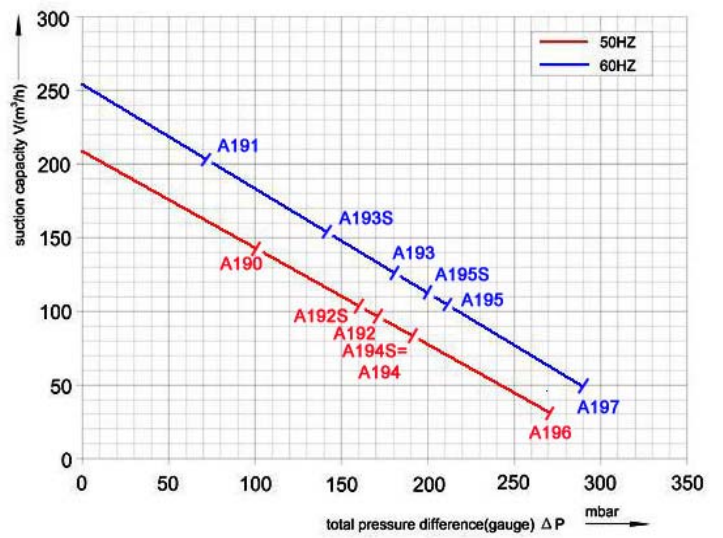
GREENCO SINGLE STAGE RING BLOWER

2RB 510 SERIES

Performance curve for vacuum pump



Performance curve for Compressor

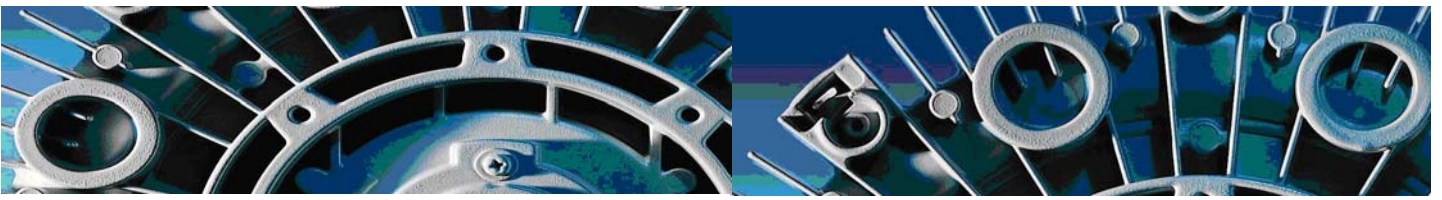


Selection and ordering data

TYPE FOR 2RB 510 SERIES

curve No	MODEL • In stock	Single double stage	Freq Hz	Output power Kw	voltage V	Rated current A	Max airflow m3/h	Max static suction mbar	Max static pressure mbar	Noise dB(A)	Dimension L X W X H mm	weight Kg
A190	• 2RB 510 H06	single	50	0.85	200-240△ 345-415Y	4.2△/2.4Y	210	-110	100	64	314 X 334 X 337	18
A191			60	0.95	220-275△ 380-480Y	4.0△/2.3Y	255	-80	70	70		18
A192	• 2RB 510 H16		50	1.3	200-240△ 345-415Y	6.6△/3.8Y	210	-170	170	64	314 X 334 X 337	20
A193			60	1.5	220-275△ 380-480Y	6.9△/4.0Y	255	-150	140	70		20
A194	• 2RB 510 H26		50	1.6	200-240△ 345-415Y	7.5△/4.3Y	210	-200	190	64	346 X 334 X 337	21
A195			60	2.1	220-275△ 380-480Y	7.6△/4.4Y	255	-220	210	70		21
A196	• 2RB 510 H36		50	2.2	200-240△ 345-415Y	9.7△/5.6Y	210	-220	270	64	346 X 334 X 337	25
A197			60	2.55	220-275△ 380-480Y	10.3△/6.0Y	255	-260	290	70		25
A192S	• 2RB 510 A01	single	50	1.3	200-240V	7.3	210	-170	170	64	314 X 334 X 337	22
A193S			60	1.5	200-240V	7.8	255	-150	140	70		22
A194S	2RB 510 A11		50	1.5	200-240V	9	210	-200	190	64	346 X 334 X 337	24
A195S			60	1.75	200-240V	9.5	255	-220	210	70		24





GREENCO 2RB type can be applied both as vacuum pump and compressor in continuous operation over the total stated performance curve range. The motors are available as standard for the input voltage range of 50 and 60 Hz and for protection category IP 54 as well as approved for EC and ROHS.

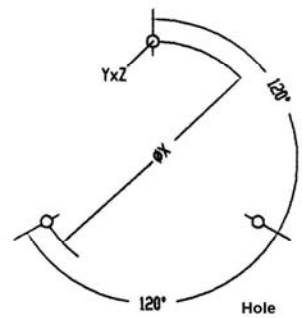
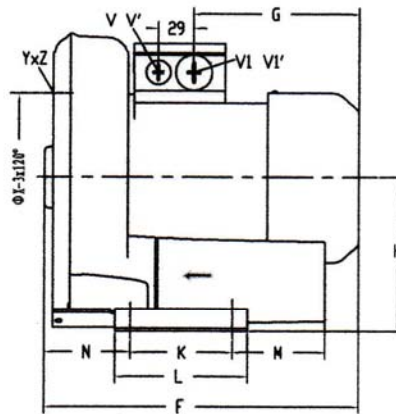
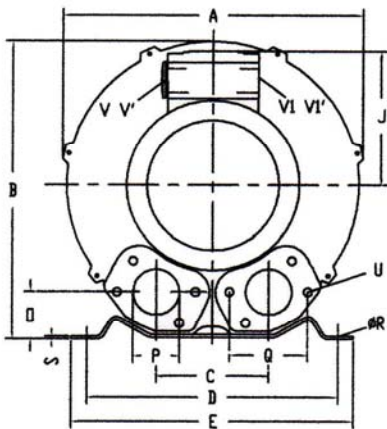
This motors are designed according to the DIN EN 60 034 / IEC 34-1 and temperature class F.

For the three phase machines the tolerances +/- 10% for fixed voltage and for +/- 5% voltage range

The single phase machines are designed with a +/- 5% tolerances. If only 90% of the maximum allowed pressure will be used for continuous operating then the allowed voltage range add to +/- 10%.

The frequency tolerances is maximum +/- 2%.

Installation for dimension



MODEL	phase	Curve	A	B	C	D	E	F	G	H	J	K	L	M	N	O	P	Q	ØR
2RB510 A01	1	A192s/193s	334	337	120	260	295	314	156	175	120	115	155	96	87	48	G2	83	14
A11	1	A194s/195s						346	188		128								
2RB510 H06	3	A190/191						314	153		128								
H16	3	A192/193																	
H26	3	A194/195						346	185										
H36	3	A196/197																	
MODEL	phase	Curve	S	U	V	V'	V1	V1'	Y x Z	X-holes	ØX								
2RB510 A01	1	A192s/193s	4	M8 X 17	M16 X 1.5	M25 X 1.5	M25 X 1.5	M16 X 1.5	M8 x 20	0°/120°/240°	Ø200								
A11	1	A194s/195s																	
2RB510 H06	3	A190/191																	
H16	3	A192/193																	
H26	3	A194/195																	
H36	3	A196/197																	

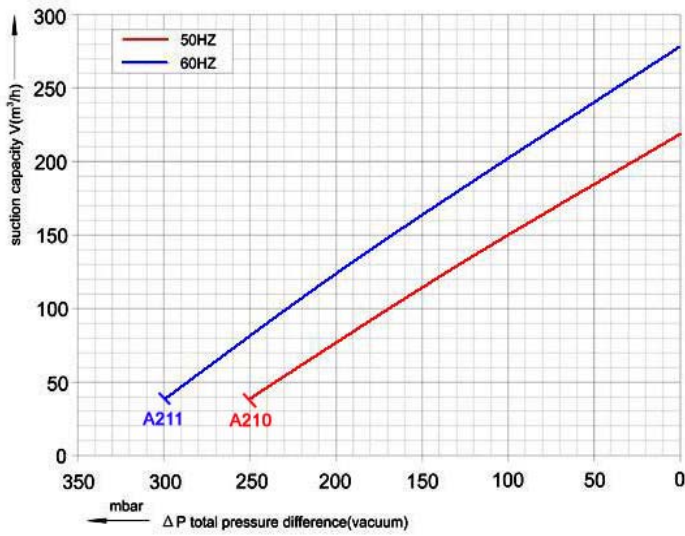




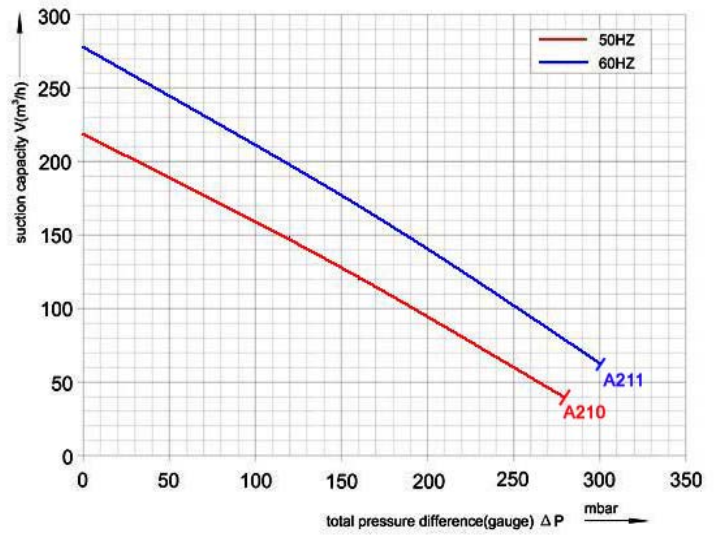
GREENCO SINGLE STAGE RING BLOWER

2RB 610 SERIES

Performance curve for vacuum pump



Performance curve for Compressor

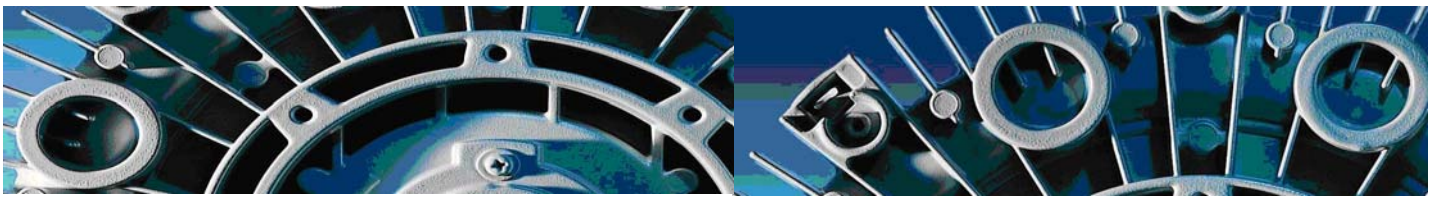


Selection and ordering data

TYPE FOR 2RB 610 SERIES

curve No	MODEL ▪ In stock	Single double stage	Freq Hz	Output power Kw	voltage V	Rated current A	Max airflow m3/h	Max static suction mbar	Max static pressure mbar	Noise dB(A)	Dimension L X W X H mm	weight Kg
A210	▪ 2RB 610 H16	single	50	2.2	200-240△ 345-415Y	9.5△/5.0Y	220	-200	200	68	380 x 350 x 365	30
A211			60	2.5	220-275△ 380-480Y	7.8△/5.0Y	280	-220	220	70		30





GREENCO 2RB type can be applied both as vacuum pump and compressor in continuous operation over the total stated performance curve range. The motors are available as standard for the input voltage range of 50 and 60 Hz and for protection category IP 54 as well as approved for EC and ROHS.

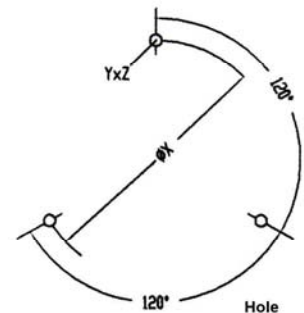
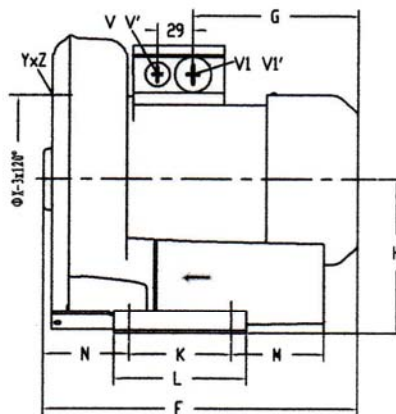
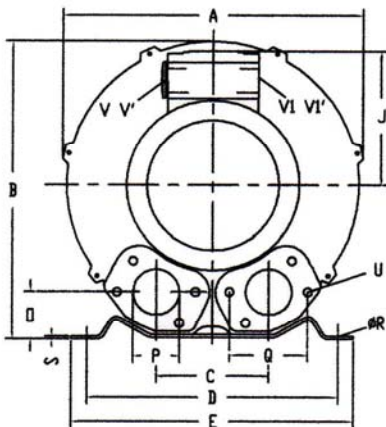
This motors are designed according to the DIN EN 60 034 / IEC 34-1 and temperature class F.

For the three phase machines the tolerances +/- 10% for fixed voltage and for +/- 5% voltage range

The single phase machines are designed with a +/- 5% tolerances. If only 90% of the maximum allowed pressure will be used for continuous operating then the allowed voltage range add to +/- 10%.

The frequency tolerances is maximum +/- 2%.

Installation for dimension



MODEL	phase	Curve	A	B	C	D	E	F	G	H	J	K	L	M	N	O	P	Q	ØR
2RB610 H16	3	A210/211	363	365	120	290	325	137	190	190	156	140	180	76	95	54	G2	83	15
MODEL	phase	Curve	S	U	V	V'	V1	V1'	Y x Z	X-holes	ØX								
2RB610 H16	3	A210/211	4.5									M10 x 20	0°/120°/240°						

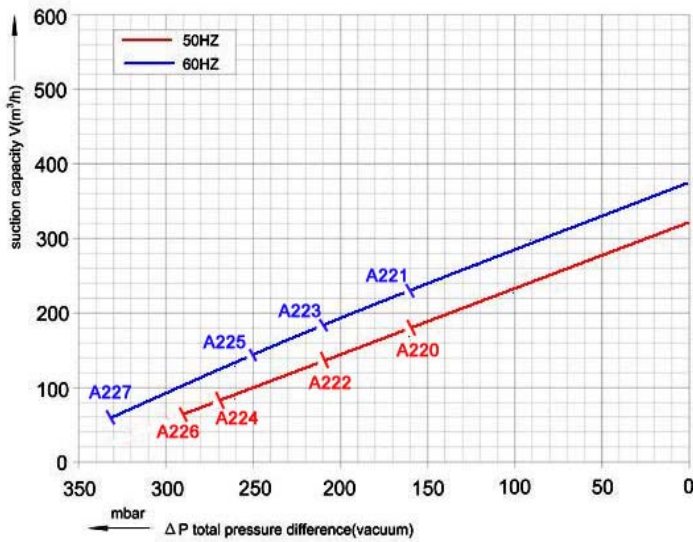




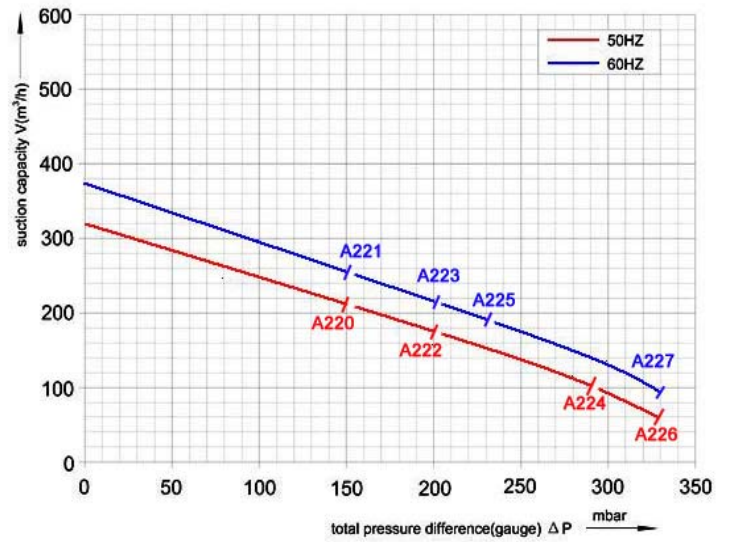
GREENCO SINGLE STAGE RING BLOWER

2RB 710 SERIES

Performance curve for vacuum pump



Performance curve for Compressor

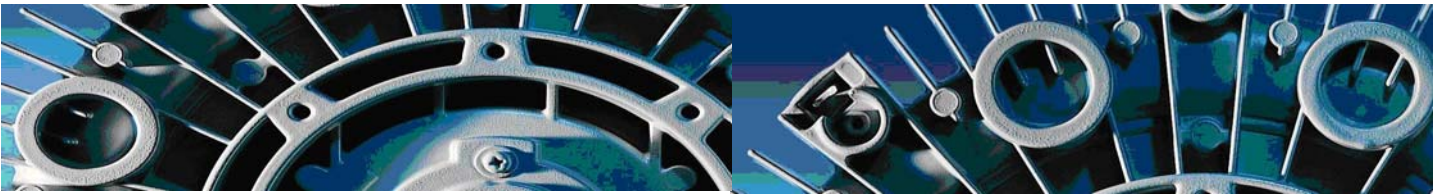


Selection and ordering data

TYPE FOR 2RB 710 SERIES

curve No	MODEL • In stock	Single double stage	Freq Hz	Output power Kw	voltage V	Rated current A	Max airflow m3/h	Max static suction mbar	Max static pressure mbar	Noise dB(A)	Dimension L X W X H mm	weight Kg
A220	• 2RB 710 H06	single	50	1.6	200-240△ 345-415Y	8.5△/4.9Y	318	-160	150	69	377 X 382 X 384	26
A221			60	2.1	220-275△ 380-480Y	8.8△/5.5Y	376	-160	150	72		26
A222	• 2RB 710 H16		50	2.2	200-240△ 345-415Y	10△/5.6Y	318	-210	200	69	377 X 382 X 384	29
A223			60	2.55	220-275△ 380-480Y	10.3△/6.5Y	376	-210	200	72		29
A224	• 2RB 710 H26		50	3	200-240△ 345-415Y	12.5△/7.2Y	318	-270	290	69	411 X 382 X 384	34
A225			60	3.45	220-275△ 380-480Y	12.5△/7.3Y	376	-250	230	72		34
A226	2RB 710 H37		50	4	345-415△	9.5△	318	-290	330	69	432 X 382 X 384	42
A227			60	4.6	345-415△	9.5△	376	-330	330	72		42





GREENCO 2RB type can be applied both as vacuum pump and compressor in continuous operation over the total stated performance curve range. The motors are available as standard for the input voltage range of 50 and 60 Hz and for protection category IP 54 as well as approved for EC and ROHS.

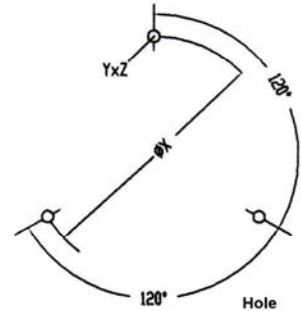
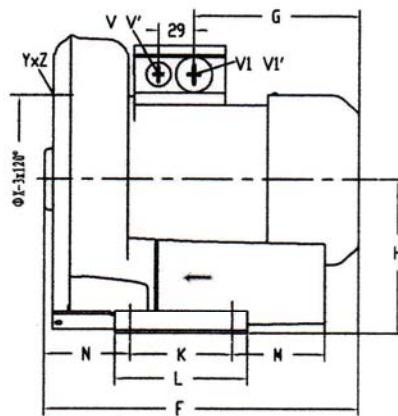
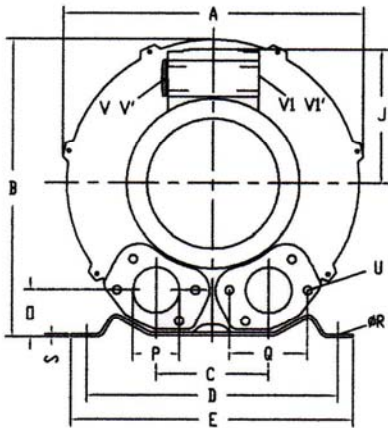
This motors are designed according to the DIN EN 60 034 / IEC 34-1 and temperature class F.

For the three phase machines the tolerances +/- 10% for fixed voltage and for +/- 5% voltage range

The single phase machines are designed with a +/- 5% tolerances. If only 90% of the maximum allowed pressure will be used for continuous operating then the allowed voltage range add to +/- 10%.

The frequency tolerances is maximum +/- 2%.

Installation for dimension



MODEL	phase	Curve	A	B	C	D	E	F	G	H	J	K	L	M	N	O	P	Q	ØR
2RB710 H06	3	A220/221	382	384	125	290	325	377	185	198	128	140	180	84	109	54	G2	83	15
H16	3	A222/223																	
H26	3	A224/225						411	190		135								
H37	3	A226/227						432	211		148								
MODEL	phase	Curve	S	U	V	V'	V1	V1'	Y x Z	X-holes	ØX								
2RB710 H06	3	A220/221	4.5						M10 x 20	0°/120°/240°	Ø240								
H16	3	A222/223																	
H26	3	A224/225			M32 x 1.5	M32 x 1.5	M32 x 1.5	M32 x 1.5											
H37	3	A226/227																	

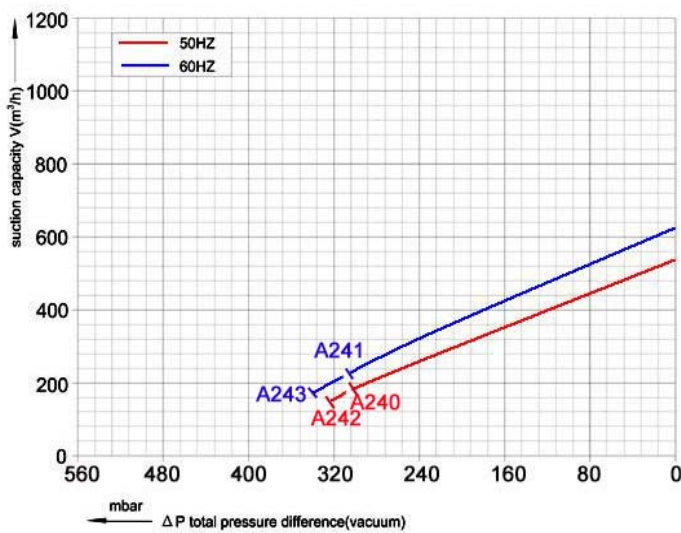




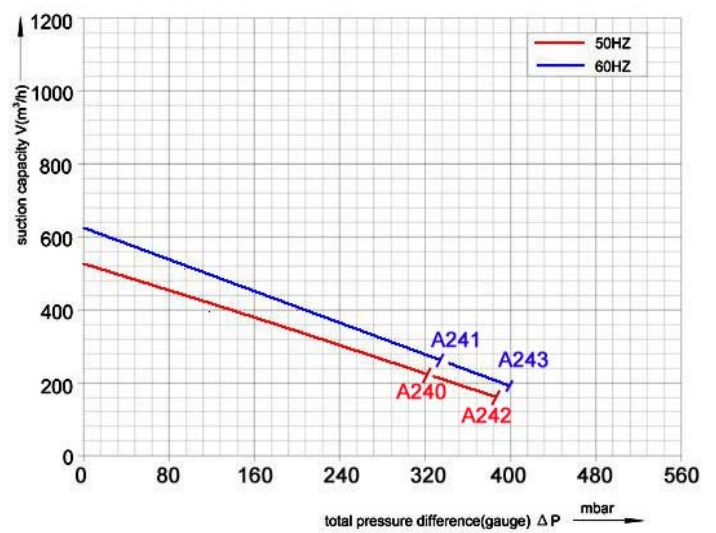
GREENCO SINGLE STAGE RING BLOWER

2RB 810 SERIES

Performance curve for vacuum pump



Performance curve for Compressor

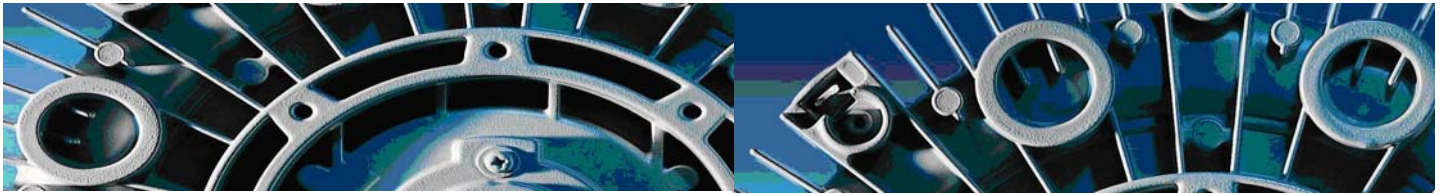


Selection and ordering data

TYPE FOR 2RB 810 SERIES

curve No	MODEL ▪ In stock	Single double stage	Freq Hz	Output power Kw	voltage V	Rated current A	Max airflow m3/h	Max static suction mbar	Max static pressure mbar	Noise dB(A)	Dimension L X W X H mm	weight Kg
A240	• 2RB 810 H07	single	50	5.5	345-415△	13.3△	530	-300	320	80	485 X 442 X 462	65
A241			60	6.3	345-415△	13.3△	620	-320	340	82		65
A242	• 2RB 810 H17		50	7.5	345-415△	16.7△	530	-320	380	80	485 X 442 X 462	68
A243			60	8.6	345-415△	17.3△	620	-340	400	82		68





GREENCO 2RB type can be applied both as vacuum pump and compressor in continuous operation over the total stated performance curve range. The motors are available as standard for the input voltage range of 50 and 60 Hz and for protection category IP 54 as well as approved for EC and ROHS.

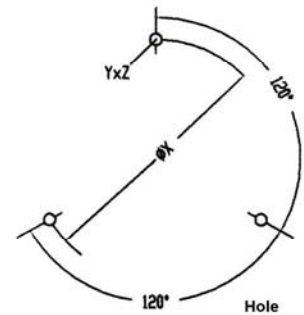
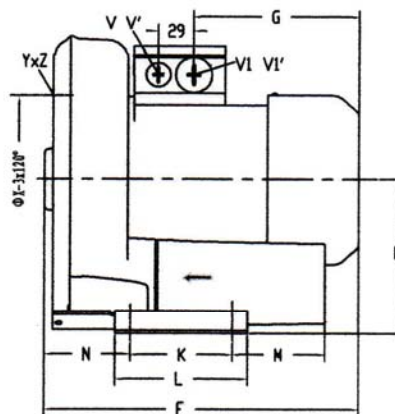
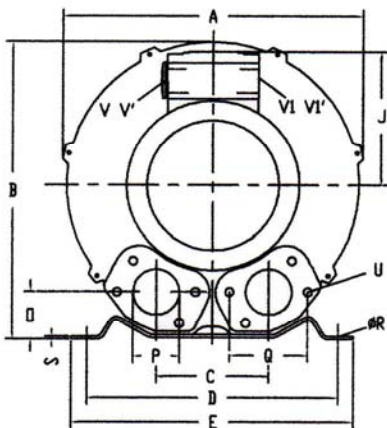
This motors are designed according to the DIN EN 60 034 / IEC 34-1 and temperature class F.

For the three phase machines the tolerances +/- 10% for fixed voltage and for +/- 5% voltage range

The single phase machines are designed with a +/- 5% tolerances. If only 90% of the maximum allowed pressure will be used for continuous operating then the allowed voltage range add to +/- 10%.

The frequency tolerances is maximum +/- 2%.

Installation for dimension



MODEL	phase	Curve	A	B	C	D	E	F	G	H	J	K	L	M	N	O	P	Q	ØR
2RB810 H07	3	A240/241	442	465	145	390	420	485	137	236	191	180	220	64	84	60	G2 ½	104	15
H17	3	A242/243																	
MODEL	phase	Curve	S	U	V	V'	V1	V1'	Y x Z	X-holes	ØX								
2RB810 H07	3	A240/241	6	M8 X 17								M10 x 20	0°/120°/240°	Ø273					
H17	3	A242/243																	

