

Technical parameters

Model	LS07-IFP1-S3C2	LS09-IFP1-S3C2	LS13-IFP1-S3C2	LS16-IFP1-S3C2	LS20-IFP1-S3C2	LS24-IFP1-S3C2
Performance condition: Air: 27°C / Water: 27°C / Humidity: 80%						
Heating capacity (kW)	1.4-7.2	1.9-9.3	2.6-13	3.2-16	4.1-20.5	4.8-24.4
Heating capacity (BTU)	4800-24600	6500-31700	8900-44400	10900-54600	14000-70000	16400-83300
COP Range	14.8-6.4	14.8-6.7	14.9-6.4	14.5-6.4	14.6-6.4	14.8-6.0
Average COP at 50% Speed	9.8	9.7	9.8	9.6	9.7	9.8
Performance condition: Air: 15°C / Water: 26°C / Humidity: 70%						
Heating capacity (kW)	1.0-5.0	1.3-6.5	1.8-9.1	2.3-11.5	2.8-14.0	3.4-16.8
Heating capacity (BTU)	3400-17000	4400-22200	6100-31000	7850-39200	9600-47800	11600-57300
COP Range	7.6-4.1	7.7-4.2	7.4-4.0	7.7-4.2	7.8-4.1	7.6-4.1
Average COP at 50% Speed	6.9	6.8	6.9	6.7	6.8	6.9
Technical specific						
Advised pool volume (m ³) *	15~30	20~45	35~65	40~75	50~90	60~110
Operating air temperature (°C)	-10°C~43°C					
Power supply	220-240V / 1Ph / 50-60Hz					
Heat exchanger	Spiral titanium tube in PVC					
Refrigerant	R32					
Casing	ABS					
Compressor	Twin-rotary					
Rated input power (kW)	0.1-1.13	0.13-1.39	0.17-2.03	0.22-2.5	0.28-3.2	0.32-4.1
Input power at 50% Speed (kW)	0.4	0.5	0.7	0.9	1.2	1.3
Rated input current (A)	0.40-4.9	0.52-6.0	0.8-8.8	1.0-10.9	1.2-14.0	1.4-17.7
Maximum input current (A)	6.5	7.8	12	16.5	18.6	21
Power cord (mm ²)	3*1.5	3*1.5	3*2.5	3*2.5	3*4.0	3*4.0
Sound level at 1m dB(A)	36.8~50.2	38.6~52.5	42.5~52.0	42.5~52.0	44.3~57.0	44.9~58.7
Sound level by 50% speed 1m dB(A)	42.5	45.8	47.5	47.5	48.6	48
Sound level at 10m dB(A)	17.9~30.2	19.6~31.4	22~32.5	24.2~35.4	24.3~36.2	25.9~37.6
Advised water flow (m ³ /h)	2~4	3~5	4~6	6~8	7~10	10~12
Water connection (mm)	50					
R32 Net weight (g)	450	600	750	1500	1500	1750
Gross weight (kg)	50	52	53	65	68.5	79.5
Net weight (kg)	42	44	45	56	59	70
Net dimension LxWxH (mm)	891x370x665	891x370x665	891x370x665	981x370x665	981x440x765	981x440x765
Packing Size (mm)	936x385x695	936x385x695	936x385x695	1026x385x695	1026x455x800	1026x455x800
Qty per 20'FT / 40'HQ (sets)	102/216	102/216	102/216	90/198	50/165	50/165

Remarks:

* The above data will be subject to change without further notice, please refer to the nameplate on the unit.

* Advised pool volume applies to a private pool with an isothermal cover, from April to September.

Guangdong LASWIM Water Environment Equipment Co.,Ltd

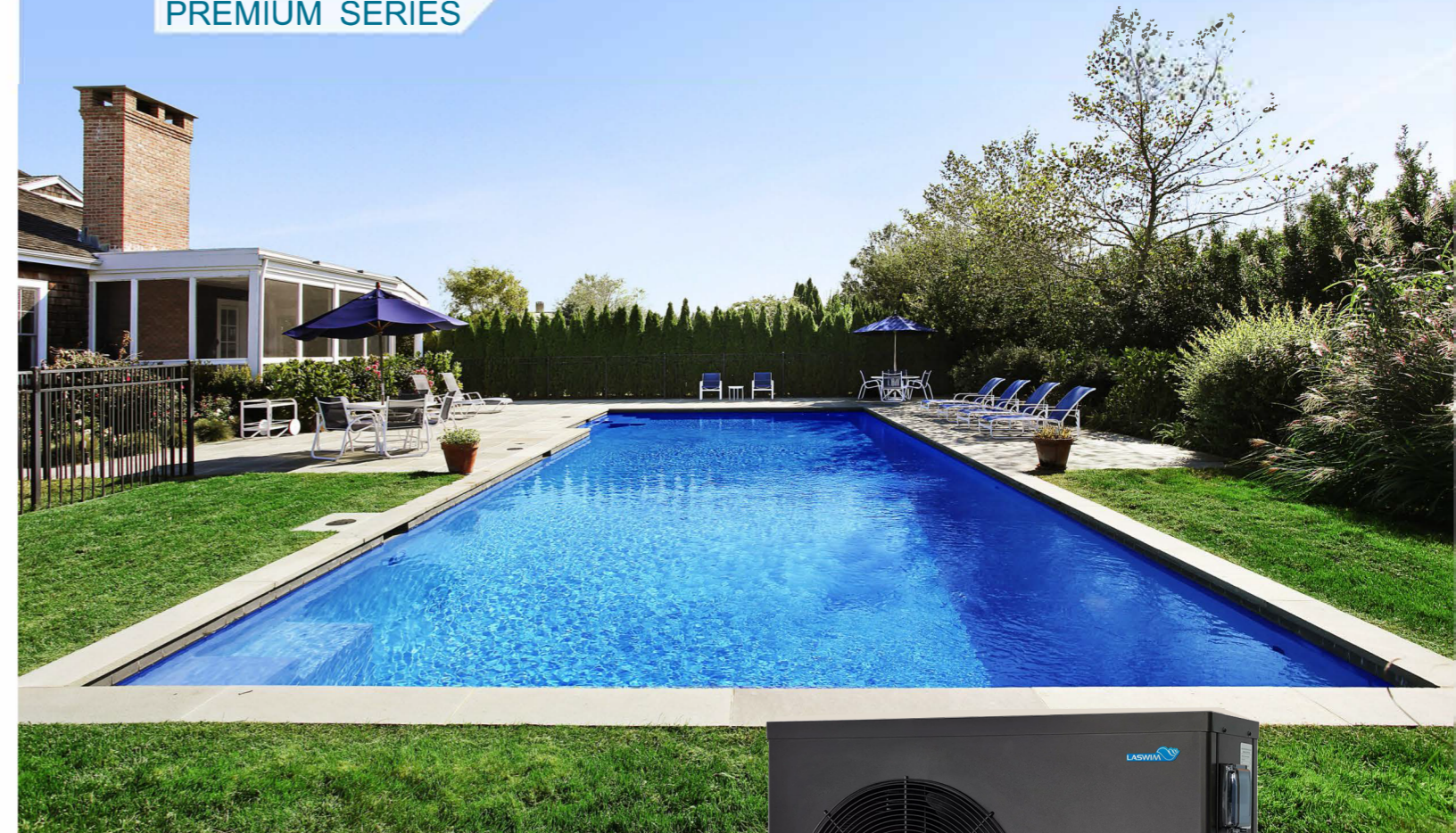
Factory Add: No.16, Jianye Road, Shenghui South Industrial Park, Nantou, Zhongshan City, Guangdong Province, 528427, P. R. China

Tel: (0086)760-2312 7666 Fax: (0086)760-2312 7299

For more information please visit www.laswimwater.com

FULL INVERTER SWIMMING POOL HEAT PUMP

PREMIUM SERIES



LASWIM Premium series swimming pool heat pump is powered by mature stepless DC inverter technology, which helps to greatly reduce the energy consumption while running silently, enabling the unit to reach extremely high COP up to 14. By smart conversion of compressor speed, fan motor speed and system pressure, this Premium series heat pump can provide amazing energy saving and silent performance.

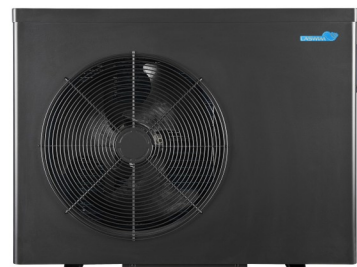


Customizable Appearance

In order to choose your most preferable color or appearance of the heat pumps, customized appearances service is available .



Grey



Black



Dark grey



Silver white



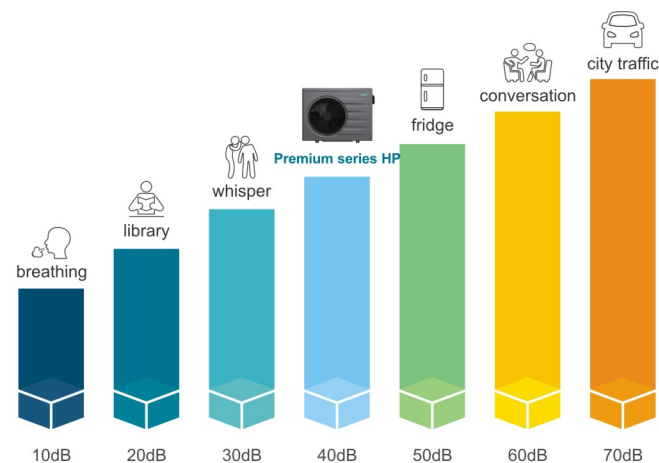
Royal blue



Brown

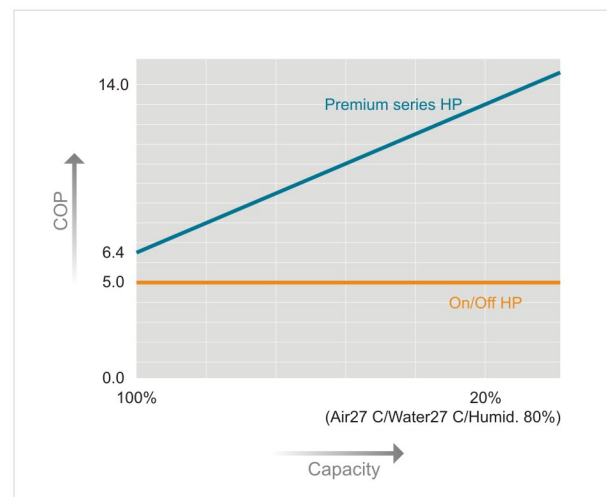
Super silent running

Thanks to the full inverter technology, this Premium series pool heat pump can bring you much quieter swimming environment than a normal on/off pool heat pump, which is more friendly to your neighborhood.



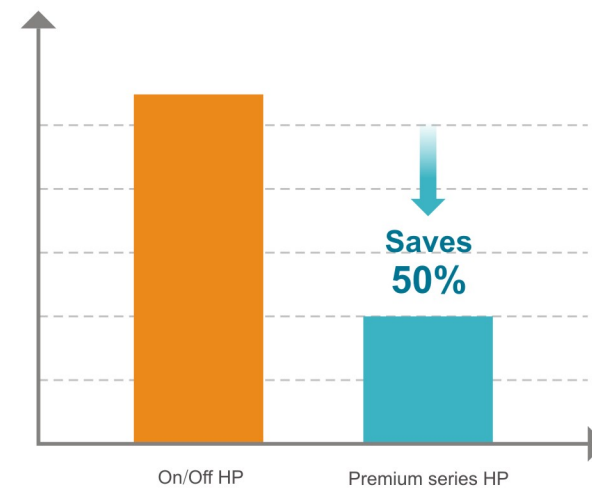
COP up to 14

When maintaining pool temperature at 95% of pool season, the COP of this Premium series heat pump can be up to 14 when running at middle & low speed, which leads to the best energy saving performance and most silent pool environment.



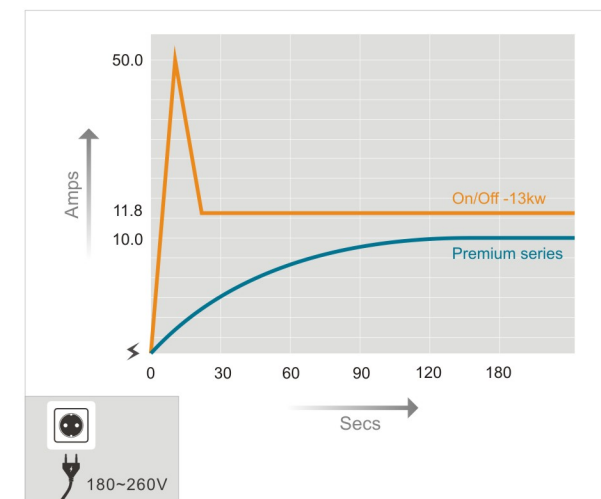
Energy saving

Adjusting the operating frequency of its compressor and fan motor automatically according to the heating or cooling demand, Premium series heat pump runs at middle & low speed most of the time, it is nearly double energy saving than On/Off heat pump.



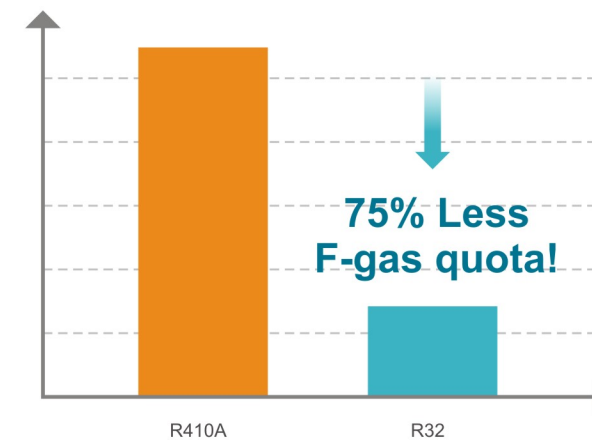
Soft start & wide voltage application

By using stepless DC inverter compressor, the input current will start from 0 Amps to rated Amps steadily, to better protect the house electricity system. With its smart conversion, this premium series heat pump can be also adapted to wide voltage from 180~260V.



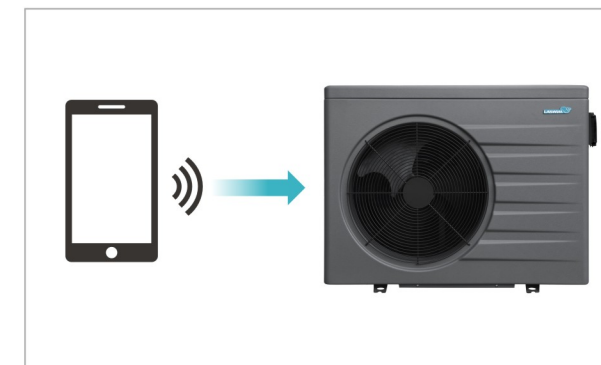
Eco-friendly refrigerant R32

Compared to other refrigerants widely used today, R32 is remarkable for its small environment impact and has a global warming potential(GWP) of 675, which is two-third lower than R410A, cuts 75% carbon emission and 75% F-gas quota cost.



Built-in Wi-Fi function

With Wi-Fi function, you can control your heat pump through a smart APP on the phone easily anywhere and anytime.



Other features

- DC** Twin-rotary DC inverter compressor
- Reverse cycle defrosting** with 4-way valve for quick & efficient defrosting
- 10°C** Design for operating air temperature as low as -10°C

- EEV** EEV technology: 10 times flexibility to adjust the gas flow and increase the COP by up to 20%.
- Spiral titanium heat exchanger:** 40% higher efficiency than normal titanium heat exchanger.
- Can be used for swimming pool heating or cooling.**