

E-lumen X – Eagle Eye

UNDERWATER LED LIGHT SERIES

A fine design light for residential Pool and Spa



 **Emaux**
water technology

Pool & Spa Equipment

Product Features

ULTRA SLIM FIT NICHELESS LED POOL LIGHT

EAGLE EYE is a slim, high efficiency LED light with a powerful 18W output. The nicheless design allows for installation in 1.5 inch/50mm PVC pipes, suction fittings, or wall conduits. An easy-change lens cover provides a handy option for switching lighting effects.

Advantages:

Innovative convection design

Eagle eye allocates the innovative technologies of convection design. The faster the heat transfer, the longer it last.

The flexibility of smaller size

Eagle eye is only 190mm (7½") in length, which can fit into the narrowest pool walls, providing flexibility for every masterpiece design.

Long operational lifespan

LED life exceeds 9,000 hours.

Ultimate glowing

The diffuser lens offers a wide angle and distance of illumination.

Multi-installation mechanisms

Designed for installation with PVC pipes, suction fittings, and wall conduits and adaptable for different pool types.

Wireless color change

Compatible with Emaux Colortouch remote control system for direct change: color, lighting effect and brightness level.

Friendly accessories

A protective cover plus two lens covers are included. Lens covers are specifically designed for the Eagle eye to eliminate reflective shadows and halos on the pool floor, which helps to keep bright lights out of swimmers' eyes in shallow areas.



Material

PC + ABS

Operation Voltage

12V AC

Power

18W

Cable Length

7ft / 50ft / 100ft / 150ft
2.5m / 15m / 30m / 45m

Waterproof Standard

IP68

Color



RGB



LED
Warm White

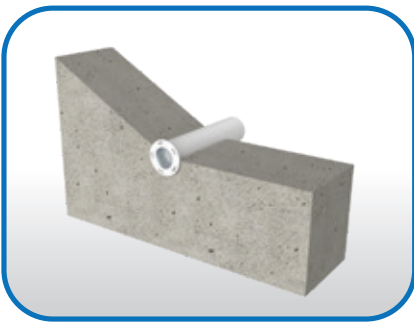


LED
Cool White

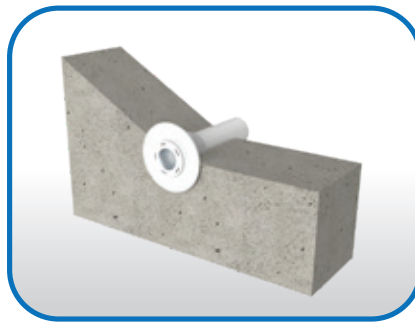
Product Information:

Code	Model	Cable Length	Description	Illuminance
9043001	EAG18	7/50/100/150 ft 2.5/15/30/45 m	Eagle Eye Nicheless LED Light 2White+RGB, 18W / 12V AC	278 Lux

Installations:



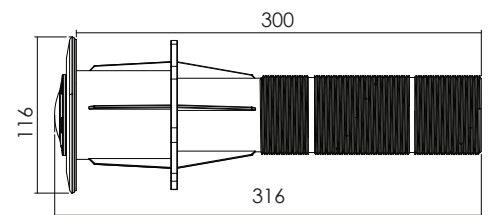
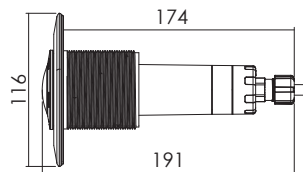
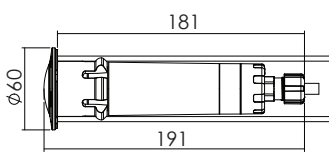
1.5" PVC Pipe



Suction Fittings



Conduits



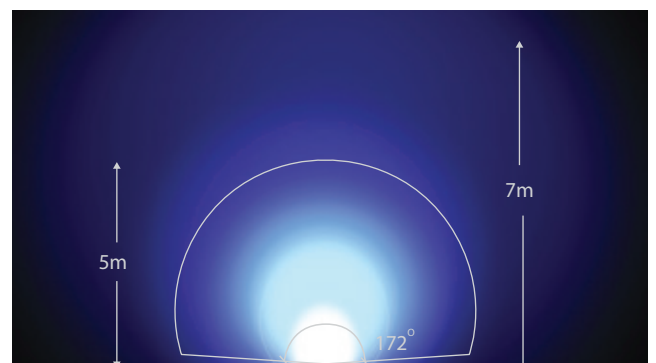
Lens Covers



Eagle Eye



Half Moon



Angle and distance of illumination

EMAUX WATER TECHNOLOGY CO., LTD

ADDRESS: Flat A-D, 20/F., Kai Bo 22, 22 Wing Kin Road,
Kwai Chung, HK

PHONE +852 2832 9880

www.emauxgroup.com

 **YOUR PREMIER SUPPLIER**

Available from:

ALL SPECIFICATIONS ARE SUBJECT TO CHANGE WITHOUT NOTICE.
© EMAUX WATER TECHNOLOGY CO., LTD. ALL RIGHTS RESERVED.

www.emauxgroup.com