



MODEL: YC295

โคมไฟสำหรับสระว่ายน้ำ Swimming Pool Light



IP68 waterproof



CE certification



ROHS



Imported chips

YC295 ABS Swimming LED Pool Light

Wall mounted pool Light

Light Source: SMD 2835

Working Voltage: AC. 12 V.

Body Material: ABS +UV Pc transparent cover

Color Temperature: White/ Warm White/ RGB

Luminous Efficiency: 100LM/W

IP Rating: IP68 Waterproof

Certificate: CE, RoHS, FCC

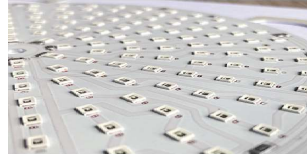
Application: Resort/ Villa/ Gym/ Playground Pool



ABS lamp body
No fading, good corrosion resistance and compression resistance



Waterproof PC Mask
High hardness, not easy to break, high light transmittance and long life



SMD 2835 epistar chips
High brightness, low energy consumption, uniform light output, soft light

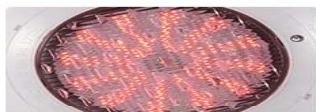
CODE	POWER	Voltage	Color	Body Material	Light Source	Size (mm)
						L 295 * H 70 mm
YC295-12W-WW	12W	12 V. AC.	Warm White	ABS+UV	1PCS/W High Power LED	L 295 * H 70 mm
YC295-12W-WW	12W		Cool White			
YC295-12W-RGB	12W		RGB+RF			
YC295-18W-WW	18W		Warm White			
YC295-18W-CW	18W		Cool White			
YC295-18W-RGB	18W		RGB+RF			

Dimension



RGB color change display

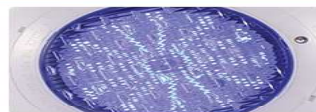
Different lights are suitable for different scenes



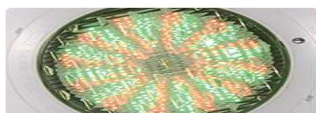
Red



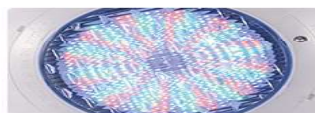
Green



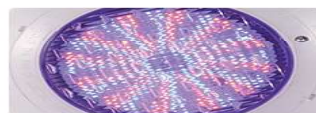
Blue



Red+Green



Green+Blue+Red



Blue+Red

Installation Steps

1. Remove the bracket from lamp.
2. Fix the bracket on the wall of pool with screws.
3. Screw the lamp to the bracket.
4. Connect the wire to 12- 24V converter (lamp can not connect to 220V power directly)

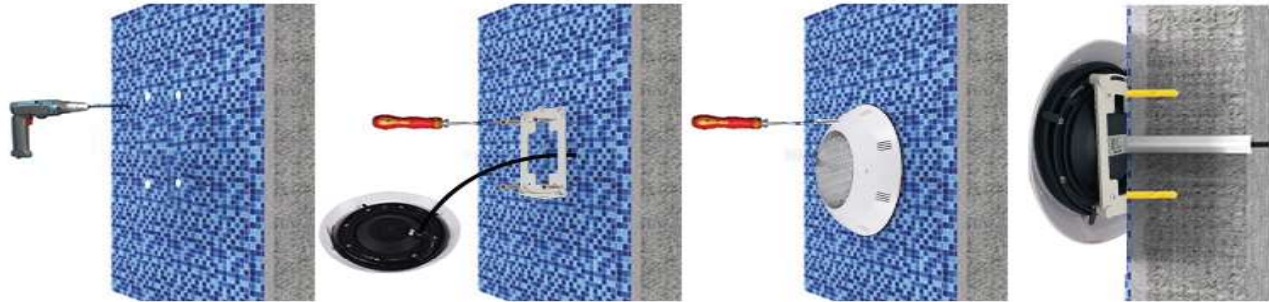
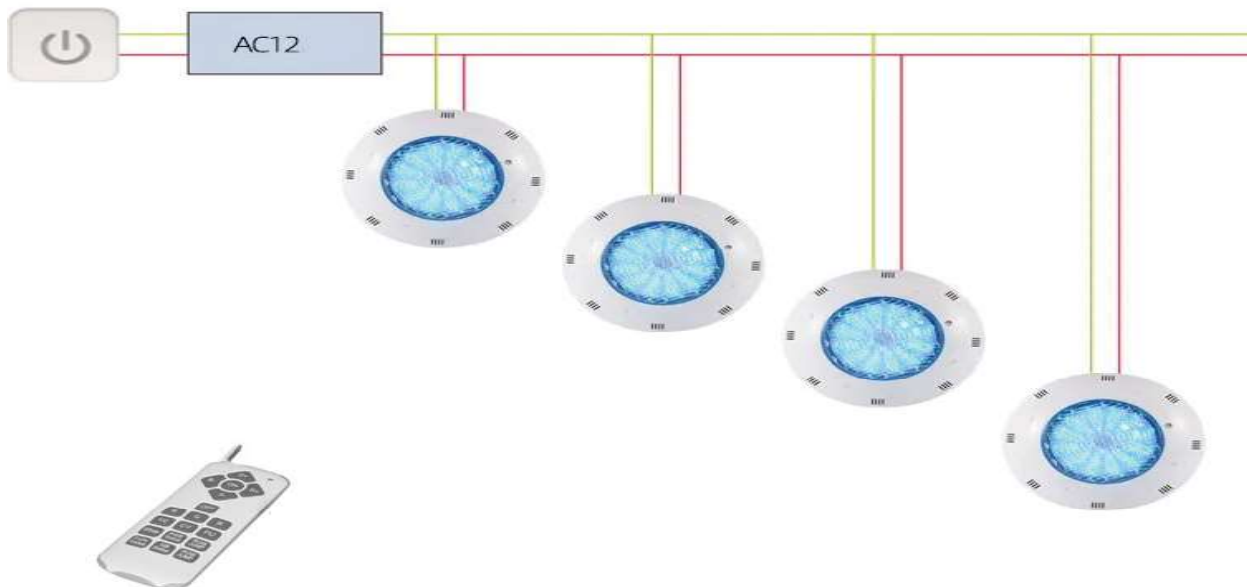


DIAGRAM CIRCUIT



One remote control can control <30 pool lights at the same time

APPLICATION



BUYER'S REAL SHOT DISPLAY



REMOTE CONTROL OPERATION MANUAL

