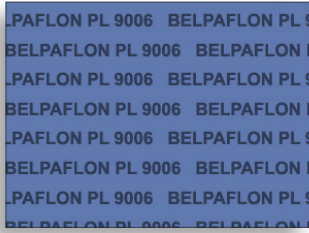


COMPOSITION:



P.T.F.E sheet with an addition of special particles in order to increase the creep deformation resistance, and with a high compressibility, specially recommended for use where a low bolt load applications are required (glass flanges). Gasket material with an excellent chemical resistance, including acids and alcalis at high concentrations (sodium hydroxide, sulphuric acid, nitric acid, hydrogen chloride, potassium hydroxide). It is easy to cut and it has a excellent assembly and disassembly as its antistick properties. Non flammable and No ageing. Specially recommended for glass, plastic and ceramic flanges.

TECHNICAL DATA

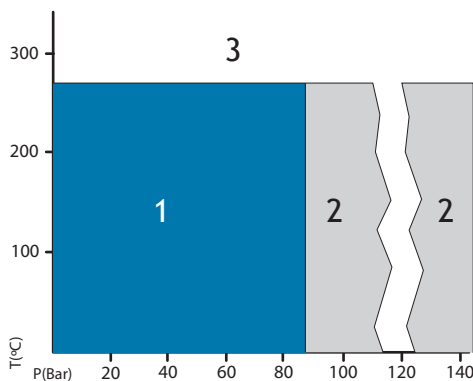
Colour	Blue
Standard sizes (mm)	1500 x 1500
Standard thickness (mm). Other upon request	1.5; 2; 3
Density (+/-10%)	1,6 g/cm ³
Temperature, min./max. °C	-200 / +260
Leakage Rate (N ₂) cm ³ /min. DIN 3535	0.02
Compressibility ASTM F-36 A	28%
Recovery ASTM F-36 A	38%
Recovery (mm) 28090-2	0.07
Hot creep at 200°C ξ wsw/200 (%)	22
Cold compressibility ξ KSW (%)	25
Cold recovery ξ KRW (%)	7

* Typical properties for 2 mm thickness.

CERTIFICATIONS

FDA (FDA 21, CFR 177-1550)

PRESSURE - TEMPERATURE DIAGRAM



P-T OPERATING GUIDELINES:

- 1- Usually satisfactory to use without reference to Montero. Technical examination is normally unnecessary.
- 2- Must refer to Montero for advice. A technical examination is recommended.
- 3- Area not recommended.

The P-T diagram helps the user or designer who often knows the operating temperature and pressure to carry out an initial selection of a suitable material. The P-T diagram cannot guarantee the suitability of a material for an application.

Good performance and long service life of gaskets depend in large measure on fitting and operation conditions, over which the manufacturer has no control. The data given on this technical sheet should not be used as application limits, but as guidance for an appropriate choice. We can offer guarantees only for the quality of our products.