

Rigid/intermediate grade conduit fittings

Grounding bushings

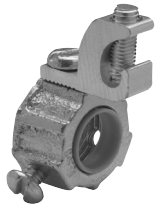
INSULATED THROAT GROUNDING BUSHINGS – MALLEABLE IRON

Applications:

- For use on threaded rigid/IMC conduit to provide a means of grounding conduit through an insulated bushing

105°C rated plastic throat liner Aluminum lug – for copper or aluminum grounding conductors – threaded

UL File No. E-6225



Cat. #	Size	Lug size	Unit qty.	Wt. lbs. per 100
GLL1	1/2"	#4 - #14	50	5
GLL2	3/4"	#4 - #14	50	9
GLL3	1"	#4 - #14	50	12
GLL4	1 1/4"	#4 - #14	25	19
GLL4 10	1 1/4"	#1/0 - #8	25	23
GLL5	1 1/2"	#4 - #14	10	24
GLL5 10	1 1/2"	#1/0 - #8	10	28
GLL6	2"	#4 - #14	10	26
GLL6 10	2"	#1/0 - #8	10	32
GLL7	2 1/2"	#1/0 - #8	10	53
GLL7 30	2 1/2"	#3/0 - #6	10	60
GLL7 250	2 1/2"	250MCM - #6	10	67
GLL8	3"	#1/0 - #8	5	70
GLL8 30	3"	#3/0 - #6	5	72
GLL8 250	3"	250MCM - #6	5	76
GLL9	3 1/2"	#3/0 - #6	1	100
GLL9 250	3 1/2"	250MCM - #6	1	100
GLL10	4"	#3/0 - #6	1	110
GLL10 250	4"	250MCM - #6	1	120
GLL11	5"	#3/0 - #6	1	140
GLL11 250	5"	250MCM - #6	1	143
GLL12	6"	#3/0 - #6	1	160
GLL12 250	6"	250MCM - #6	1	163

105°C rated plastic throat liner Copper lug – for copper grounding conductors – threaded

UL File No. E-6225



Cat. #	Size	Lug size	Unit qty.	Wt. lbs. per 100
GLL1C	1/2"	#4 - #14	50	8
GLL2C	3/4"	#4 - #14	50	12
GLL3C	1"	#4 - #14	50	14
GLL4C	1 1/4"	#4 - #14	25	19
GLL4 10C	1 1/4"	#1/0 - #8	25	30
GLL5C	1 1/2"	#4 - #14	10	21
GLL5 10C	1 1/2"	#1/0 - #8	10	32
GLL6C	2"	#4 - #14	10	29
GLL6 10C	2"	#1/0 - #8	10	40
GLL7C	2 1/2"	#1/0 - #8	10	65
GLL7 30C	2 1/2"	#3/0 - #6	10	88
GLL7 250C	2 1/2"	250MCM - #6	10	97
GLL8C	3"	#1/0 - #8	5	77
GLL8 30C	3"	#3/0 - #6	5	100
GLL8 250C	3"	250MCM - #6	5	109
GLL9C	3 1/2"	#3/0 - #6	1	125
GLL9 250C	3 1/2"	250MCM - #6	1	134
GLL10C	4"	#3/0 - #6	1	145
GLL10 250C	4"	250MCM - #6	1	154
GLL11C	5"	#3/0 - #6	1	165
GLL11 250C	5"	250MCM - #6	1	174
GLL12C	6"	#3/0 - #6	1	195
GLL12 250C	6"	250MCM - #6	1	204

Rigid/intermediate grade conduit fittings

Grounding bushings

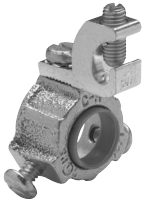
INSULATED THROAT GROUNDING BUSHINGS – MALLEABLE IRON

Applications:

- For use on threadless rigid/IMC conduit to provide a means of grounding conduit through an insulated bushing

Aluminum lug – for copper or aluminum grounding conductors – threadless – set screw type 105°C rated plastic throat liner

UL File No. E-6225



Cat. #	Size	Lug size	Unit qty.	Wt. lbs. per 100
GLS1	1/2"	#4 - #14	50	5
GLS2	3/4"	#4 - #14	50	9
GLS3	1"	#4 - #14	50	12
GLS4	1 1/4"	#4 - #14	25	19
GLS4 10	1 1/4"	#1/0 - #8	25	23
GLS5	1 1/2"	#4 - #14	10	24
GLS5 10	1 1/2"	#1/0 - #8	10	28
GLS6	2"	#4 - #14	10	26
GLS6 10	2"	#1/0 - #8	10	32
GLS7	2 1/2"	#1/0 - #8	10	53
GLS7 30	2 1/2"	#3/0 - #6	10	60
GLS7 250	2 1/2"	250MCM - #6	10	67
GLS8	3"	#1/0 - #8	5	70
GLS8 30	3"	#3/0 - #6	5	72
GLS8 250	3"	250MCM - #6	5	76
GLS9	3 1/2"	#3/0 - #6	1	100
GLS9 250	3 1/2"	250MCM - #6	1	100
GLS10	4"	#3/0 - #6	1	110
GLS10 250	4"	250MCM - #6	1	120
GLS11	5"	#3/0 - #6	1	140
GLS11 250	5"	250MCM - #6	1	143
GLS12	6"	#3/0 - #6	1	160
GLS12 250	6"	250MCM - #6	1	163

Copper lug – for copper grounding conductors – threadless – set screw type 105°C rated plastic throat liner

UL File No. E-6225



Cat. #	Size	Lug size	Unit qty.	Wt. lbs. per 100
GLS1C	1/2"	#4 - #14	50	8
GLS2C	3/4"	#4 - #14	50	12
GLS3C	1"	#4 - #14	50	14
GLS4C	1 1/4"	#4 - #14	25	19
GLS4 10C	1 1/4"	#1/0 - #8	25	30
GLS5C	1 1/2"	#4 - #14	10	21
GLS5 10C	1 1/2"	#1/0 - #8	10	32
GLS6C	2"	#4 - #14	10	29
GLS6 10C	2"	#1/0 - #8	10	40
GLS7C	2 1/2"	#1/0 - #8	10	65
GLS7 30C	2 1/2"	#3/0 - #6	10	88
GLS7 250C	2 1/2"	250MCM - #6	10	97
GLS8C	3"	#1/0 - #8	5	77
GLS8 30C	3"	#3/0 - #6	5	100
GLS8 250C	3"	250MCM - #6	5	109
GLS9C	3 1/2"	#3/0 - #6	1	125
GLS9 250C	3 1/2"	250MCM - #6	1	134
GLS10C	4"	#3/0 - #6	1	145
GLS10 250C	4"	250MCM - #6	1	154
GLS11C	5"	#3/0 - #6	1	165
GLS11 250C	5"	250MCM - #6	1	174
GLS12C	6"	#3/0 - #6	1	195
GLS12 250C	6"	250MCM - #6	1	204

Rigid/intermediate grade conduit fittings

Grounding bushings

Rigid fittings

INSULATED THROAT GROUNDING BUSHINGS – MALLEABLE IRON

Applications:

- For use on threaded rigid/IMC conduit to provide a means of grounding conduit through an insulated bushing

Features:

- Resilient plastic liner, resists corrosion, chemicals and temperature extremes
- Insuliner – ULTEM1000 rated at 150°C
- One set screw provided with each fitting; locks bushing in any desired position
- External stainless steel hardware as standard
- Steel screws are standard

Standard finish:

- Zinc plated

150°C rated Aluminum lug – for copper or aluminum grounding conductors – threaded

UL File No. E-6225



Cat. #	Size	Lug size	Unit qty.	Wt. lbs. per 100
HGLL 1	1/2"	#4 - #14	50	9
HGLL 2	3/4"	#4 - #14	50	11
HGLL 3	1"	#4 - #14	50	14
HGLL 4	1 1/4"	#4 - #14	25	17
HGLL4 10	1 1/4"	#1/0 - #8	25	24
HGLL 5	1 1/2"	#4 - #14	10	20
HGLL5 10	1 1/2"	#1/0 - #8	10	24
HGLL 6	2"	#4 - #14	10	27
HGLL6 10	2"	#1/0 - #8	10	31
HGLL 7	2 1/2"	#1/0 - #8	10	58
HGLL7 30	2 1/2"	#3/0 - #6	10	67
HGLL7 250	2 1/2"	250MCM - #6	10	70
HGLL 8	3"	#1/0 - #8	5	69
HGLL8 30	3"	#3/0 - #6	5	78
HGLL8 250	3"	250MCM - #6	5	81
HGLL 9	3 1/2"	#3/0 - #6	1	101
HGLL9 250	3 1/2"	250MCM - #6	1	104
HGLL 10	4"	#3/0 - #6	1	120
HGLL10 250	4"	250MCM - #6	1	123
HGLL 11	5"	#3/0 - #6	1	145
HGLL 11 250	5"	250MCM - #6	1	150
HGLL 12	6"	#3/0 - #6	1	185
HGLL 12 250	6"	250MCM - #6	1	186

150°C rated Copper lug – for copper grounding conductors – threaded

UL File No. E-6225

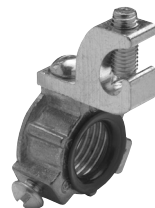


Cat. #	Size	Lug size	Unit qty.	Wt. lbs. per 100
HGLL1C	1/2"	#4 - #14	50	12
HGLL2C	3/4"	#4 - #14	50	14
HGLL3C	1"	#4 - #14	50	17
HGLL4C	1 1/4"	#4 - #14	25	20
HGLL4 10C	1 1/4"	#1/0 - #8	25	32
HGLL5C	1 1/2"	#4 - #14	10	23
HGLL5 10C	1 1/2"	#1/0 - #8	10	35
HGLL 6C	2"	#4 - #14	10	30
HGLL6 10C	2"	#1/0 - #8	10	42
HGLL7C	2 1/2"	#1/0 - #8	10	69
HGLL7 30C	2 1/2"	#3/0 - #6	10	92
HGLL7 250C	2 1/2"	250MCM - #6	10	101
HGLL8C	3"	#1/0 - #8	5	80
HGLL8 30C	3"	#3/0 - #6	5	103
HGLL8 250C	3"	250MCM - #6	5	112
HGLL9C	3 1/2"	#3/0 - #6	1	126
HGLL9 250C	3 1/2"	250MCM - #6	1	135
HGLL10C	4"	#3/0 - #6	1	145
HGLL10 250C	4"	250MCM - #6	1	155
HGLL 11C	5"	#3/0 - #6	1	171
HGLL11 250C	5"	250MCM - #6	1	180
HGLL 12C	6"	#3/0 - #6	1	210
HGLL 12 250C	6"	250MCM - #6	1	317

INSULATED THROAT GROUNDING BUSHINGS – ZINC DIE CAST

150°C rated plastic throat liner Aluminum lug – for copper or aluminum grounding conductors

UL File No. E-6225



Cat. #	Size	Unit qty.	Wt. lbs. per 100
GLL1 DC	1/2"	50	3
GLL2 DC	3/4"	40	4
GLL3 DC	1"	25	5
GLL4 DC	1 1/4"	25	9
GLL5 DC	1 1/2"	25	10
GLL6 DC	2"	10	14
GLL7 DC	2 1/2"	5	25
GLL8 DC	3"	5	33
GLL9 DC	3 1/2"	4	38
GLL10 DC	4"	4	44

Rigid/intermediate grade conduit fittings

Grounding bushings

INSULATED THROAT GROUNDING BUSHINGS – MALLEABLE IRON

Applications:

- For use on threadless rigid/IMC conduit to provide a means of grounding conduit through an insulated bushing

Features:

- Resilient plastic liner resists corrosion, chemicals and temperature extremes
- Insuliner – ULTEM1000 rated at 150°C
- Two set screws provided with each fitting; locks bushings in any desired position

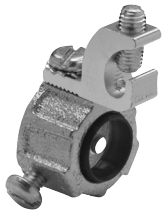
Standard finish:

- Body – zinc plated

150°C rated

Set screw type – aluminum lug – for copper or aluminum grounding conductors – threadless

UL File No. E-6225



Cat. #	Size	Lug size	Unit qty.	Wt. lbs. per 100
HGLS1	1/2"	#4 - #14	50	9
HGLS2	3/4"	#4 - #14	50	10
HGLS3	1"	#4 - #14	50	13
HGLS4	1 1/4"	#4 - #14	25	16
HGLS4 10	1 1/4"	#1/0 - #8	25	20
HGLS5	1 1/2"	#4 - #14	10	18
HGLS5 10	1 1/2"	#1/0 - #8	10	22
HGLS6	2"	#4 - #14	10	24
HGLS6 10	2"	#1/0 - #8	10	28
HGLS7	2 1/2"	#1/0 - #8	10	50
HGLS7 30	2 1/2"	#3/0 - #6	10	58
HGLS7 250	2 1/2"	250MCM - #6	10	60
HGLS8	3"	#1/0 - #8	5	58
HGLS8 30	3"	#3/0 - #6	5	67
HGLS8 250	3"	250MCM - #6	5	70
HGLS9	3 1/2"	#3/0 - #6	1	80
HGLS9 250	3 1/2"	250MCM - #6	1	85
HGLS10	4"	#3/0 - #6	1	90
HGLS10 250	4"	250MCM - #6	1	100
HGLS11	5"	#3/0 - #6	1	115
HGLS11 250	5"	250MCM - #6	1	120
HGLS12	6"	#3/0 - #6	1	145
HGLS12 250	6"	250MCM - #6	1	150

150°C rated

Set screw type – copper lug – for copper grounding conductors – threadless

UL File No. E-6225



Cat. #	Size	Lug size	Unit qty.	Wt. lbs. per 100
HGLS1C	1/2"	#4 - #14	50	12
HGLS2C	3/4"	#4 - #14	50	13
HGLS3C	1"	#4 - #14	50	16
HGLS4C	1 1/4"	#4 - #14	25	19
HGLS4 10C	1 1/4"	#1/0 - #8	25	31
HGLS5C	1 1/2"	#4 - #14	10	21
HGLS5 10C	1 1/2"	#1/0 - #8	10	33
HGLS6C	2"	#4 - #14	10	27
HGLS6 10C	2"	#1/0 - #8	10	39
HGLS7C	2 1/2"	#1/0 - #8	10	60
HGLS7 30C	2 1/2"	#3/0 - #6	10	83
HGLS7 250C	2 1/2"	250MCM - #6	10	92
HGLS8C	3"	#1/0 - #8	5	70
HGLS8 30C	3"	#3/0 - #6	5	92
HGLS8 250C	3"	250MCM - #6	5	100
HGLS9C	3 1/2"	#3/0 - #6	1	105
HGLS9 250C	3 1/2"	250MCM - #6	1	115
HGLS10C	4"	#3/0 - #6	1	100
HGLS10 250C	4"	250MCM - #6	1	130
HGLS11C	5"	#3/0 - #6	1	140
HGLS11 250C	5"	250MCM - #6	1	150
HGLS12C	6"	#3/0 - #6	1	170
HGLS12 250C	6"	250MCM - #6	1	180