

# **STEEL CITY**

**CATALOG**

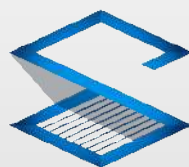
**2022**

**Manufacture as order in Addition to catalog**  
ผลิตภัณฑ์อื่นๆ นอกเหนือจากภายในเล่มนี้ เราผลิตให้ได้ตามต้องการ



Thank you very much for choosing our products with your trustiness. We would like to inform our customers that we have been trying our best to improve the quality of products. All Products are stamped with trademark. Please look for our trademark or logo before making your order and check all products before making any payments.

ขอขอบพระคุณอย่างสูง ที่ท่านให้ความไว้วางใจเลือกใช้ผลิตภัณฑ์ STEEL CITY ซึ่งเรามีความมุ่งมั่นที่จะพัฒนาผลิตภัณฑ์ต่างๆ ให้ดีที่สุด โดยท่านจะมั่นใจได้ว่าผลิตภัณฑ์ภายใต้เครื่องหมายการค้าทั้งสองนี้คือมาตรฐานคุณภาพและความปลอดภัยที่ท่านจะได้รับ ขอเรียนย้ำเตือนว่า นอกเหนือจากตราเครื่องหมายการค้าทั้งสองนี้ เราไม่เคยใช้อักษรย่อใดๆ ประทับบนผลิตภัณฑ์ของเรา โปรดสังเกต! ก่อนพิจารณาสั่งซื้อและตรวจรับผลิตภัณฑ์ทุกครั้ง



**STEEL CITY**

STEEL CITY trademark  
เครื่องหมายการค้าสตีล ซิตี้



- Content / สารบัญภาพ -

**Conduit Fitting & Accessories**



**09**

Handy Covers



**10**

Handy Boxes



**11**

Square Boxes



**12**

Square Covers



**12**

One For All Square Boxes



**12**

Stainless Cover



**13**

Europa Boxes



**13**

M.K. Boxes



**13**

Europa Covers



**13**

Reducing Washer



**13**

Screw For Device Box



**14**

Octagon Boxes



**14**

Octagon Covers



**15**

Pull Boxes



**16**

Junction Boxes



**17**

Conduit Outlet Boxes



**19**

F.S. Boxes Single gang



**20**

F.S. Boxes Double gang



**20**

Full Color F.S. Boxes Single gang



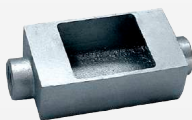
**20**

Full Color F.S. Boxes Double gang



**21**

Wide Series F.S. Boxes



**21**

F.S. Boxes 3" x 5"



**22**

F.S. Cover Plates Single gang



**22**

F.S. Cover Plates Double gang



**23**

Service Entrance Caps



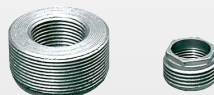
**24**

Outlet Boxes for Ball Flange



**24**

Ball Flange



**25**

Threaded Tubelet Reducers



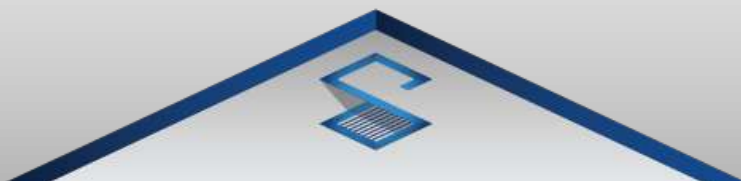
**25**

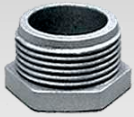
Close-Up Plugs



**26**

Rain Tight Hub Connectors





**26**

Chase Nipples



**26**

Electro Galvanized Nipples



**26**

Erickson Couplings



**27**

Liquid Tight Flexible Connectors



**28**

Flexible Conduits



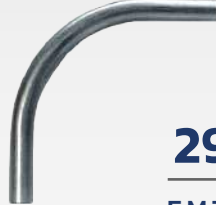
**28**

Flexible Connectors



**28**

Liquid Tight Flexible Conduits



**29**

E.M.T. Conduit & Elbows



**30**

I.M.C. Conduit & Elbows



**30**

Benders



**30**

Hickeys



**30**

Electrical Wire Pulling Lubricant



**31**

E.M.T. Connectors



**31**

E.M.T. Couplings



**32**

Locknuts



**32**

I.M.C. Couplings



**32**

Bushings



**33**

E.M.T Straps



**33**

I.M.C. Straps



**34**

Stainless Straps



**34**

C-Channels & Stainless C-Channels



**35**

Wire Nuts



**35**

Screw for Conduit Clamp



**35**

Screw+Nut for Applicable Hangers



**36**

Conduit Clamps



**36**

Stainless Conduit Clamps



**37**

Applicable Hangers



**37**

Stainless Applicable Hangers



**37**

Screw+Nuts for Stainless Conduit Clamp



**37**

Screw+Nuts for Stainless Applicable Hangers



**38**

Beam Clamps



**38**

Stainless Beam Clamps



**38**

Liquid Tight Cable Connectors



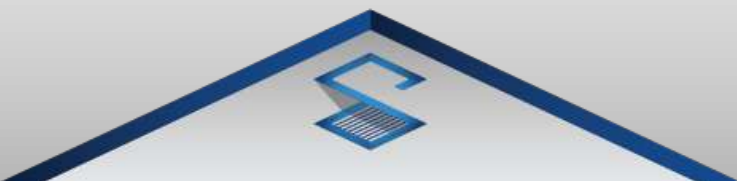
**38**

N.M. Connectors



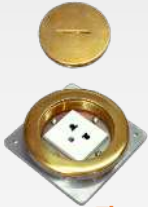
**38**

Drop Wire Clamp



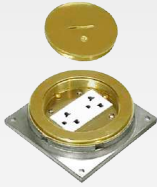
- Content / สารบัญภาพ -

Lightning Protection Fitting & Accessories



39

Floor Outlet Boxes 4"x4"



40

Floor Outlet Boxes 5"x5"



40

Close-Up Plug For Floor Outlet Box



40

Floor Outlet Cup with Eagle Receptacle



40

Jumbo Square Box & Cover 5" x 5"



42

Air Terminal Bases



42

Stainless Nut for Air Terminal



43

Air Terminal Rods



43

Air Terminals



44

Split-Bolts



44

U Clamp 2 Screws



44

Terminal Lugs



44

Ground Test Box



45

Copper Electrolyzed Ground Rod



45

Copper Electrolyzed Ground Rod Threaded 2 end



45

Copper Clad Ground Rods



45

Hot Dip Galvanized Ground Rod



45

Ellipse Ground Rods



45

Ground Rod Couplings



45

U Copper Ground Clamp



45

3 Grooves Ground Clamp



46

Copper Cable Clamps



46

Bus Bare Clamps



46

G.B. Clamps



47

Parallel Groove Clamps



47

Connector Dead End



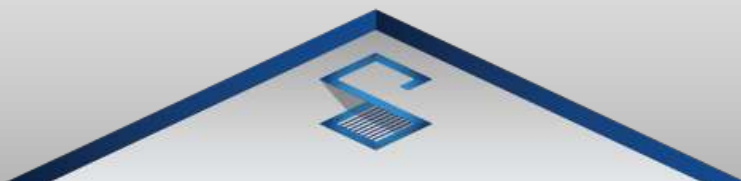
47

Mesh Parallel Groove Clamp



47

Preformed Dead End



**Hot Dip Galvanized Conduit Fitting & Accessories**



**49**

Hot Dip Galvanized Earth Pit Box



**49**

Hot Dip Galvanized Hexagon Nuts



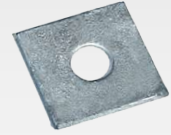
**50**

Hot Dip Galvanized Machine Bolts



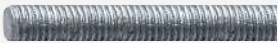
**50**

Hot Dip Galvanized Secondary Racks



**51**

Hot Dip Galvanized Square Washer



**51**

Hot Dip Galvanized Stud Thread Rods



**51**

Spool Insulator



**51**

Aluminium Tie Wire



**51**

Hot Dip Galvanized Surface Cover



**51**

Hot Dip Galvanized Surface Cover



**52**

Hot Dip Galvanized Handy Boxes



**52**

Hot Dip Galvanized Europa Boxes



**53**

Hot Dip Galvanized Square Boxes



**53**

Hot Dip Galvanized Jumbo Square Boxes



**53**

Hot Dip Galvanized Jumbo Square Cover



**54**

Hot Dip Galvanized Octagon Boxes



**54**

Hot Dip Galvanized Surface Cover



**54**

Hot Dip Galvanized M.K. Boxes



**54**

Screw + Nut for Hot Dip Galvanized Conduit Clamp



**54**

Screw + Nut for Hot Dip Galvanized Applicable Hangers



**55**

Hot Dip Galvanized B.S. Boxes



**55**

Hot Dip Galvanized F.S. Boxes



**56**

Hot Dip Galvanized F.S. Boxes Single gang



**57**

Hot Dip Galvanized Circular Boxes



**57**

Hot Dip Galvanized Circular Flat Covers



**57**

Hot Dip Galvanized Circular Hub Plate Covers



**58**

Hot Dip Galvanized Conduit Outlet Boxes



**59**

Hot Dip Galvanized Junction Boxes With Covers



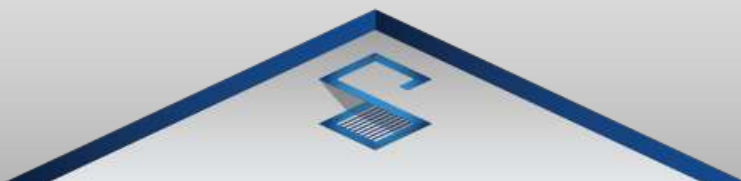
**60**

Hot Dip Galvanized Edge Conduit Reducers



**60**

Hot Dip Galvanized Close-Up Plugs

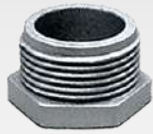


**Hot Dip Galvanized Conduit Fitting & Accessories**



**60**

Hot Dip Galvanized Conduit Enlargers



**61**

Hot Dip Galvanized Chase Nipples



**61**

Hot Dip Galvanized Hub Connectors



**61**

Hot Dip Galvanized Square Hub Plates



**61**

Hot Dip Galvanized Conduit Clamps



**62**

Hot Dip Galvanized C-Channels



**62**

Hot Dip Galvanized Beam Clamps



**62**

Hot Dip Galvanized Conduit Clamps



**62**

Hot Dip Galvanized Applicable Hangers



**63**

Hot Dip Galvanized Erickson Couplings



**63**

Hot Dip Galvanized I.M.C. Couplings



**64**

Hot Dip Galvanized Mild Steel Bushings



**64**

Hot Dip Galvanized Mild Steel Locknuts



**64**

Hot Dip Galvanized Clamps



**65**

Hot Dip Galvanized Pull Boxes



**65**

Hot Dip Galvanized Liquid Tight Flexible connection



**66**

Hot Dip Galvanized Rain Tight E.M.T. Connector



**66**

Hot Dip Galvanized Rain Tight E.M.T. Coupling



**66**

Hot Dip Galvanized E.M.T. Connector Mild Steel



**67**

Hot Dip Galvanized Edge Conduit Enlargers



**67**

Hot Dip Galvanized Nipples



**67**

Hot Dip Galvanized U-Bolts + 2 Nuts

**ANSI - American National Standard Institute**



**69**

ANSI Bushings



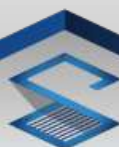
**69**

ANSI Locknuts



**69**

Grounding Bushings



- Content / สารบัญภาพ -

**Explosion Proof Conduit Fitting & Accessories**



**71**

**Explosion Proof Unions**



**71**

**Explosion Proof Flexible Conduits**



**72**

**Explosion Proof Conduit Outlet Boxes**



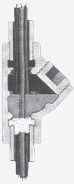
**73**

**Explosion Proof E.Y.K.**



**73**

**Explosion Proof E.Y.S.**



**73**

**Sealing Compound & Fiber**



**74**

**Explosion Proof Junction Boxes**



**75**

**Explosion Proof Aluminium Boxes**



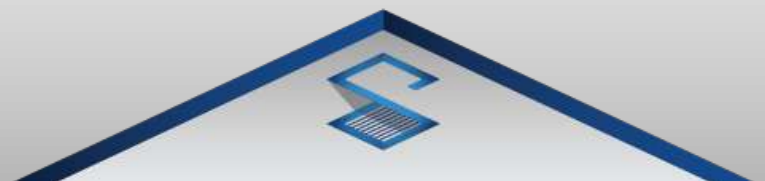
**75**

**Explosion Proof Aluminium Box - Type PBR**

**PROJECT REFERENCES**



**BANGKOK UNIVERSITY**  
THE CREATIVE UNIVERSITY





# Conduit Fitting & Accessories





## Handy Covers (2" X 4")

ฝาปิดแฮนด์บีอกซ์



ปิดมิด



น็อครุ



ปลั๊กคู่



ปลั๊กเล็ก



ปลั๊กกลาง



ปิดมิด  
มีขอบหนา 1 mm.

| Type                  | Cat.,No. |
|-----------------------|----------|
| ปิดมิด                | BY21     |
| น็อครุ 1/2"           | BY22     |
| ปลั๊กคู่              | BY24     |
| ปลั๊กเล็ก             | BY25     |
| ปลั๊กกลาง             | BY26     |
| ปิดมิด มีขอบหนา 1 mm. | BYF21    |

## Handy Boxes (2" X 4")

ແອນດີປັອກ໌



Thickness 1.0 mm.

| Knockout                        | Cat.,No. |
|---------------------------------|----------|
| ຕົ້ນ ຕົບ                        | BX20     |
| ຕົ້ນ 1/2" x 3/4" 1/2"           | BX212    |
| ຕົ້ນ ກັນກະລຸ 1/2" x 3/4" x 1/2" | BX22     |
| ລັກ 3/4" ລ້ວນ                   | BX23     |
| ລັກ ຕົບ                         | BX25     |
| ລັກ 1/2" x 3/4" x 1/2"          | BX26     |
| ລັກ ກັນກະລຸ 1/2" x 3/4" x 1/2"  | BX29     |
| ລັກ ກັນກະລຸ 3/4" ລ້ວນ           | BX30     |

Thickness 1.2 mm.

| Knockout                        | Cat.,No. |
|---------------------------------|----------|
| ຕົ້ນ ຕົບ                        | BX920    |
| ຕົ້ນ 1/2" x 3/4" 1/2"           | BX9212   |
| ຕົ້ນ ກັນກະລຸ 1/2" x 3/4" x 1/2" | BX922    |
| ລັກ 3/4" ລ້ວນ                   | BX923    |
| ລັກ ຕົບ                         | BX925    |
| ລັກ 1/2" x 3/4" x 1/2"          | BX926    |
| ລັກ ກັນກະລຸ 1/2" x 3/4" x 1/2"  | BX929    |
| ລັກ ກັນກະລຸ 3/4" ລ້ວນ           | BX930    |



## Square Boxes (4" X 4")

สแควบ็อกซ์



Thickness 1.0 mm.

| Knockout                                   | Cat.,No. |
|--|----------|
| ต้น ทึบ                                    | BX40     |
| ต้น 1/2" x 3/4" x 1/2"                     | BX41     |
| ต้น ก้นทะลุ 1/2" x 3/4" x 1/2"             | BX42     |
| ลึก 3/4" ล้วน                              | BX43     |
| ลึก ทึบ                                    | BX45     |
| ลึก 1/2" x 3/4" x 1/2"                     | BX46     |
| ลึก 3/4" X 1"                              | BX47     |
| ลึก 1" ล้วน                                | BX48     |
| ลึก ก้นทะลุ 1/2" x 3/4" x 1/2"             | BX49     |
| ลึก ก้นทะลุ 3/4" X 1"                      | BX50     |
| ลึก ทึบ ก้นทะลุ                            | BX51     |
| ลึก ก้นทะลุ 1/2" x 3/4" x 1/2" + 1" x 3/4" | BX52     |

Thickness 1.2 mm.

| Knockout                       | Cat.,No. |
|--------------------------------|----------|
| ต้น ทึบ                        | BX940    |
| ต้น 1/2" x 3/4" x 1/2"         | BX941    |
| ต้น ก้นทะลุ 1/2" x 3/4" x 1/2" | BX942    |
| ลึก 3/4" ล้วน                  | BX943    |
| ลึก ทึบ                        | BX945    |
| ลึก 1/2" x 3/4" x 1/2"         | BX946    |
| ลึก 3/4" X 1"                  | BX947    |
| ลึก 1" ล้วน                    | BX948    |
| ลึก ก้นทะลุ 1/2" x 3/4" x 1/2" | BX949    |
| ลึก ก้นทะลุ 3/4" X 1"          | BX950    |
| ลึก ทึบ ก้นทะลุ                | BX951    |
| ลึก ก้นทะลุ 1" ล้วน            | BX958    |

## Square Covers (4" X 4")

ฝาปิดสแควบ็อกซ์



ปิดมิด



น๊อครู



เสริมเรียบเดี่ยว



เสริมเรียบคู่



ฝาขอบตั้ง - ปิดมิด



เสริมมุมเดี่ยว



เสริมมุมคู่



เสริมมุมกลม



เสริมมุมอังกฤษ



ฝาขอบตั้ง - ปิดมิด 1 mm.

| Type                     | Cat.,No. |
|--------------------------|----------|
| ปิดมิด                   | BY41     |
| น๊อครู 1/2"              | BY42     |
| เสริมเรียบเดี่ยว         | BY43     |
| เสริมเรียบคู่            | BY44     |
| ปิดมิด มีขอบหนาหนา 1 mm. | BYF41    |

| Type               | Cat.,No. |
|--------------------|----------|
| เสริมมุมเดี่ยว     | BY45     |
| เสริมมุมคู่        | BY46     |
| เสริมมุมกลม        | BY47     |
| เสริมมุมอังกฤษ     | BY48     |
| ฝาขอบตั้ง - ปิดมิด | BY51     |

## One For All Square Boxes

สแควบ็อกซ์ 4 หู



Thickness 1.0 mm.

| Knockout                            | Cat.,No. |
|-------------------------------------|----------|
| ตัน 1/2" x 3/4" x 1/2"              | BX81     |
| ตัน ก้นทะลุ 1/2" x 3/4" x 1/2"      | BX82     |
| ลึ้ก 1/2" x 3/4" x 1/2"             | BX86     |
| ลึ้ก 1/2" x 3/4" x 1/2" + 1" x 3/4" | BX87     |



Thickness 1.2 mm.

| Knockout                       | Cat.,No. |
|--------------------------------|----------|
| ตัน 1/2" x 3/4" x 1/2"         | BX981    |
| ตัน ก้นทะลุ 1/2" x 3/4" x 1/2" | BX982    |
| ลึ้ก ทึบ                       | BX985    |
| ลึ้ก 1/2" x 3/4" x 1/2"        | BX986    |

## Stainless Cover Plat for German Receptacle

ฝาปิดสแตนเลสสำหรับเต้ารับเยอรมัน 2 ที่



RECEPTACLE NOT INCLUDE (สินค้าไม่รวมเต้ารับ)

Knockout

FYD1121

## Europa Boxes

ยุโรป้าบ็อกซ์



Thickness 1.0 mm.

| Knockout                        | Cat.,No. |
|---------------------------------|----------|
| ตื้น 1/2" x 3/4" x 1/2"         | BX71     |
| ตื้น ก้นทะลุ 1/2" x 3/4" x 1/2" | BX72     |
| ลึก 1/2" x 3/4" x 1/2"          | BX76     |

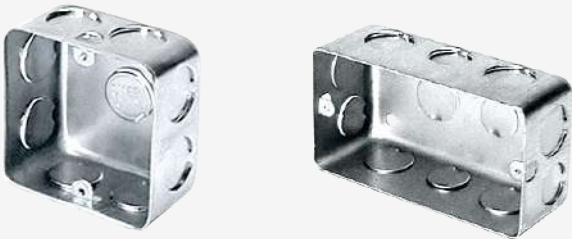


Thickness 1.2 mm.

| Knockout                | Cat.,No. |
|-------------------------|----------|
| ตื้น 1/2" x 3/4" x 1/2" | BX971    |
| ลึก 1/2" x 3/4" x 1/2"  | BX976    |

## M.K. Boxes

เอ็ม.เค.บ็อกซ์



Thickness 1.0 mm.

| Type        | Knockout               | Cat.,No. |
|-------------|------------------------|----------|
| Single Gang | ตื้น 1/2" ล้วน         | BX33     |
| Single Gang | ลึก 1/2" x 3/4"        | BX34     |
| Double Gang | ลึก 3/4" x 1/2" x 3/4" | BX35     |

## Reducing Washers

แหวนลด



| Type         | Cat.,No. |
|--------------|----------|
| 3/4" ลง 1/2" | RW21     |
| 1" ลง 1/2"   | RW31     |
| 1" ลง 3/4"   | RW32     |

## Europa Covers

ฝาปิดยุโรป้า



Thickness 1.0 mm.

| Type                   | Cat.,No. |
|------------------------|----------|
| ฝาขอบตั้ง-ปิดมิด 1 mm. | BYF91    |

## Screw For Device Box

สกรู สำหรับ ดีไวท์บ็อกซ์



สำหรับยึดฝาแอนตี้บ็อกซ์, ยุโรป้าบ็อกซ์,  
เอ็ม.เค.บ็อกซ์

| Type                    | Cat.,No. |
|-------------------------|----------|
| สกรูเกลียวอเมริกา 6/32" | BY09     |



## Octagon Boxes

อ็อกตะกอนบ็อกซ์



Thickness 1.0 mm.

Thickness 1.2 mm.

| Knockout                 | Cat.,No. |
|--------------------------|----------|
| ตัน ทึบ                  | BX60     |
| ตัน 1/2" x 3/4" x 1/2"   | BX61     |
| ลึทึบ                    | BX65     |
| ลึทึบ 1/2" x 3/4" x 1/2" | BX66     |
| ลึทึบ 3/4" x 1"          | BX67     |

| Knockout                 | Cat.,No. |
|--------------------------|----------|
| ตัน ทึบ                  | BX960    |
| ตัน 1/2" x 3/4" x 1/2"   | BX961    |
| ลึทึบ                    | BX965    |
| ลึทึบ 1/2" x 3/4" x 1/2" | BX966    |
| ลึทึบ 3/4" x 1"          | BX967    |

## Octagon Covers

ฝาปิดอ็อกตะกอนบ็อกซ์



ปิดมิด

น็อครุ

เสริมบุทกลม

ปิดมิด มีขอบหนา 1 mm.

| Type                  | Cat.,No. |
|-----------------------|----------|
| ปิดมิด                | BY61     |
| น็อครุ 1/2"           | BY62     |
| เสริมบุทกลม           | BY63     |
| ปิดมิด มีขอบหนา 1 mm. | BYF61    |





## Pull Boxes

พลูบ็อกซ์



Thickness 1.0 mm.

| Size           | Cat.,No. |
|----------------|----------|
| 4" x 4" x 4"   | PB10     |
| 6" x 6" x 4"   | PB11     |
| 6" x 8" x 4"   | PB12     |
| 8" x 8" x 4"   | PB13     |
| 10" x 10" x 4" | PB14     |
| 12" x 12" x 4" | PB15     |

| Size           | Cat.,No. |
|----------------|----------|
| 8" x 8" x 6"   | PB23     |
| 10" x 10" x 6" | PB24     |
| 12" x 12" x 6" | PB25     |
| 16" x 16" x 6" | PB26     |
| 20" x 20" x 8" | PB37     |





## Junction Boxes With Covers

บ็อกซ์กลมกันน้ำ



1 ทาง

| Size   | Cat. No. |
|--------|----------|
| 1/2"   | OJ11     |
| 3/4"   | OJ12     |
| 1"     | OJ13     |
| 1-1/4" | OJ14     |
| 1-1/2" | OJ15     |
| 2"     | OJ16     |
| 2-1/2" | OJ17     |



2 ทาง

| Size   | Cat. No. |
|--------|----------|
| 1/2"   | OJ21     |
| 3/4"   | OJ22     |
| 1"     | OJ23     |
| 1-1/4" | OJ24     |
| 1-1/2" | OJ25     |
| 2"     | OJ26     |
| 2-1/2" | OJ27     |



2 ทางฉาก

| Size   | Cat. No. |
|--------|----------|
| 1/2"   | OJ71     |
| 3/4"   | OJ72     |
| 1"     | OJ73     |
| 1-1/4" | OJ74     |
| 1-1/2" | OJ75     |
| 2"     | OJ76     |
| 2-1/2" | OJ77     |



3 ทาง

| Size   | Cat. No. |
|--------|----------|
| 1/2"   | OJ31     |
| 3/4"   | OJ32     |
| 1"     | OJ33     |
| 1-1/4" | OJ34     |
| 1-1/2" | OJ35     |
| 2"     | OJ36     |
| 2-1/2" | OJ37     |



4 ทาง

| Size   | Cat. No. |
|--------|----------|
| 1/2"   | OJ41     |
| 3/4"   | OJ42     |
| 1"     | OJ43     |
| 1-1/4" | OJ44     |
| 1-1/2" | OJ45     |
| 2"     | OJ46     |
| 2-1/2" | OJ47     |



## Conduit Outlet Boxes

คอนดุก เอ้าท์เลทบ็อกซ์ พร้อมฝา



**L.B.**



**L.L.**



**L.R.**



**O.C.**



**O.T.**



**T.B.**

## Conduit Outlet Boxes

คอนดุก เอ้าท์เลทบ็อกซ์ พร้อมฝา

### L.B.

| Size   | Cat. No. |
|--------|----------|
| 1/2"   | OB21     |
| 3/4"   | OB22     |
| 1"     | OB23     |
| 1-1/4" | OB24     |
| 1-1/2" | OB25     |
| 2"     | OB26     |
| 2-1/2" | OB27     |
| 3"     | OB28     |
| 3-1/2" | OB29     |
| 4"     | OB30     |
| 5"     | OB31     |
| 6"     | OB32     |

### L.L.

| Size   | Cat. No. |
|--------|----------|
| 1/2"   | OL21     |
| 3/4"   | OL22     |
| 1"     | OL23     |
| 1-1/4" | OL24     |
| 1-1/2" | OL25     |
| 2"     | OL26     |
| 2-1/2" | OL27     |
| 3"     | OL28     |
| 3-1/2" | OL29     |
| 4"     | OL30     |
| 5"     | OL31     |
| 6"     | OL32     |

### L.R.

| Size   | Cat. No. |
|--------|----------|
| 1/2"   | OR21     |
| 3/4"   | OR22     |
| 1"     | OR23     |
| 1-1/4" | OR24     |
| 1-1/2" | OR25     |
| 2"     | OR26     |
| 2-1/2" | OR27     |
| 3"     | OR28     |
| 3-1/2" | OR29     |
| 4"     | OR30     |
| 5"     | OR31     |
| 6"     | OR32     |

### ฝาลูมิเนียม (Cover)

| Size   | Cat. No. |
|--------|----------|
| 1/2"   | OP21     |
| 3/4"   | OP22     |
| 1"     | OP23     |
| 1-1/4" | OP24     |
| 1-1/2" | OP25     |
| 2"     | OP26     |
| 2-1/2" | OP27     |
| 3"     | OP28     |
| 3-1/2" | OP29     |
| 4"     | OP30     |
| 5"     | OP31     |
| 6"     | OP32     |

### O.T.

| Size   | Cat. No. |
|--------|----------|
| 1/2"   | OT21     |
| 3/4"   | OT22     |
| 1"     | OT23     |
| 1-1/4" | OT24     |
| 1-1/2" | OT25     |
| 2"     | OT26     |
| 2-1/2" | OT27     |
| 3"     | OT28     |
| 3-1/2" | OT29     |
| 4"     | OT30     |
| 5"     | OT31     |
| 6"     | OT32     |

### O.C.

| Size   | Cat. No. |
|--------|----------|
| 1/2"   | OC21     |
| 3/4"   | OC22     |
| 1"     | OC23     |
| 1-1/4" | OC24     |
| 1-1/2" | OC25     |
| 2"     | OC26     |
| 2-1/2" | OC27     |
| 3"     | OC28     |
| 3-1/2" | OC29     |
| 4"     | OC30     |
| 5"     | OC31     |
| 6"     | OC32     |

### T.B.

| Size   | Cat. No. |
|--------|----------|
| 1/2"   | OTB21    |
| 3/4"   | OTB22    |
| 1"     | OTB23    |
| 1-1/4" | OTB24    |
| 1-1/2" | OTB25    |
| 2"     | OTB26    |

### ยางรองฝา (Seal)

| Size   | Cat. No. |
|--------|----------|
| 1/2"   | OS01     |
| 3/4"   | OS02     |
| 1"     | OS03     |
| 1-1/4" | OS04     |
| 1-1/2" | OS05     |
| 2"     | OS06     |
| 2-1/2" | OS07     |
| 3"     | OS08     |
| 3-1/2" | OS09     |
| 4"     | OS10     |
| 5"     | OS11     |
| 6"     | OS12     |





## F.S. Boxes Single gang

เอฟ.เอส.บ็อกซ์ ซิงเกิ้ล แก๊งค์



**F.S.**

| Size | Cat., No. |
|------|-----------|
| 1/2" | FX11      |
| 3/4" | FX12      |
| 1"   | FX13      |



**F.S.C.**

| Size | Cat., No. |
|------|-----------|
| 1/2" | FX24      |
| 3/4" | FX25      |
| 1"   | FX26      |



**F.S.S.**

| Size | Cat., No. |
|------|-----------|
| 1/2" | FX21      |
| 3/4" | FX22      |



**F.S.C.C.**

| Size | Cat., No. |
|------|-----------|
| 1/2" | FX31      |
| 3/4" | FX32      |

## F.S. Boxes Double gang

เอฟ.เอส.บ็อกซ์ ดับเบิล แก๊งค์



**F.S.**

| Size | Cat., No. |
|------|-----------|
| 1/2" | FX41      |
| 3/4" | FX42      |
| 1"   | FX43      |



**F.S.C.**

| Size | Cat., No. |
|------|-----------|
| 1/2" | FX54      |
| 3/4" | FX55      |
| 1"   | FX56      |



**F.S.S.**

| Size | Cat., No. |
|------|-----------|
| 1/2" | FX51      |
| 3/4" | FX52      |



**F.S.C.C.**

| Size | Cat., No. |
|------|-----------|
| 1/2" | FX61      |
| 3/4" | FX62      |

## Full Color F.S. Boxes Single gang

ฟูลคัลเลอร์ เอฟ.เอส.บ็อกซ์ ซิงเกิ้ล แก๊งค์



**F.S.**

| Size | Cat.,No. |
|------|----------|
| 1/2" | FSF11    |
| 3/4" | FSF12    |

\* ใช้ได้กับฝา "Panasonic" 1~3 ช่อง  
 \* ทุกรุ่น ทั้ง Wide Series, Full Color  
 \* มี HUB ยื่นออกนอกตัวบ็อกซ์  
 \* ติดตั้งแนวตั้ง



**F.S.C.**

| Size | Cat.,No. |
|------|----------|
| 1/2" | FSF24    |
| 3/4" | FSF25    |

## Full Color F.S. Boxes Double gang

ฟูลคัลเลอร์ เอฟ.เอส.บ็อกซ์ ดับเบิล แก๊งค์



FSF41, FSF42

**F.S.**



FSF43

| Size | Cat.,No. |
|------|----------|
| 1/2" | FSF41    |
| 3/4" | FSF42    |
| 1"   | FSF43    |

\* ใช้ได้กับฝา "Panasonic" 4~6 ช่อง  
 \* ทุกรุ่น ทั้ง Wide Series, Full Color



**F.S.C.**

| Size | Cat.,No. |
|------|----------|
| 1/2" | FSF54    |
| 3/4" | FSF55    |



## Wide Series F.S. Boxes

วายนด์ซีรีส์ เอฟ.เอส.บ็อกซ์



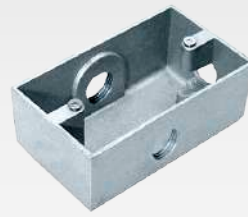
1 มง



2 มง



3 มง (Type A)



3 มง (Type B)



1 มง

| Size | Cat.,No. |
|------|----------|
| 1/2" | FSW11    |
| 3/4" | FSW12    |

| Size       | Cat.,No. |
|------------|----------|
| 1/2"       | FSW24    |
| 3/4"       | FSW25    |
| 1/2", 3/4" | FSW221   |

| Size | Cat.,No. |
|------|----------|
| 1/2" | FSW31-A  |
| 3/4" | FSW32-A  |

| Size | Cat.,No. |
|------|----------|
| 1/2" | FSW31-B  |
| 3/4" | FSW32-B  |

| Size | Cat.,No.  |
|------|-----------|
| 1/2" | FSW8881-1 |
| 3/4" | FSW8881-2 |

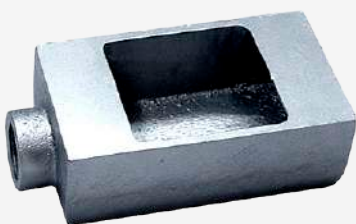
\* ใช้ได้กับฝา "Panasonic" 1~3 ช่อง ทุกรุ่น ทั้ง Wide Series, Full Color

\* ไม่มี HUB ยื่นออกนอกตัวบ็อกซ์

\* ติดตั้งแนวระนาบ

## F.S. Boxes (3" x 5")

เอฟ.เอส.บ็อกซ์



F.S.



F.S.C



F.S.S

| Size | Cat.,No. |
|------|----------|
| 1/2" | FX71     |
| 3/4" | FX72     |
| 1"   | FX73     |

| Size | Cat.,No. |
|------|----------|
| 1/2" | FX84     |
| 3/4" | FX85     |
| 1"   | FX86     |

| Size | Cat.,No. |
|------|----------|
| 1/2" | FX81     |
| 3/4" | FX82     |

\* ใช้ได้กับ Panasonic, Toshiba, Meikosha เฉพาะฝาขันน้ำฝนเปิดเงยขึ้น

## F.S. Cover Plates Single gang

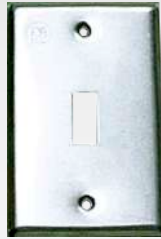
ฝาปิด เอฟ.เอส.บ็อกซ์ ซิงเกิ้ล แก๊งค์



ปิดมิด



น็อครุ



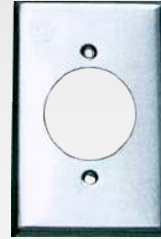
สวิตช์



ปลั๊กคู่



ปลั๊กเล็ก



ปลั๊กกลาง

### สังกะสี Zinc

| Type        | Cat.,No. |
|-------------|----------|
| ปิดมิด      | FY11     |
| น็อครุ 1/2" | FY12     |
| สวิตช์      | FY13     |
| ปลั๊กคู่    | FY14     |
| ปลั๊กเล็ก   | FY15     |
| ปลั๊กกลาง   | FY16     |

### อลูมิเนียม Aluminium

| Type        | Cat.,No. |
|-------------|----------|
| ปิดมิด      | FY21     |
| น็อครุ 1/2" | FY22     |
| สวิตช์      | FY23     |
| ปลั๊กคู่    | FY24     |
| ปลั๊กเล็ก   | FY25     |
| ปลั๊กกลาง   | FY26     |
| ปลั๊กใหญ่   | FY27     |

### สแตนเลส Stainless

| Type        | Cat.,No. |
|-------------|----------|
| ปิดมิด      | FY31     |
| น็อครุ 1/2" | FY32     |
| สวิตช์      | FY33     |
| ปลั๊กคู่    | FY34     |
| ปลั๊กเล็ก   | FY35     |
| ปลั๊กกลาง   | FY36     |
| ปลั๊กใหญ่   | FY37     |

## F.S. Cover Plates Double gang

ฝาปิดเอฟ.เอส.บ็อกซ์ ดับเบิ้ล แก๊งค์



ปิดมิด



สวิตช์+สวิตช์



ปลั๊กคู่ + สวิตช์



ปลั๊กคู่ + ปลั๊กคู่

### สังกะสี Zinc

| Type                | Cat.,No. |
|---------------------|----------|
| ปิดมิด              | FY41     |
| สวิตช์+สวิตช์       | FY42     |
| ปลั๊กคู่ + สวิตช์   | FY43     |
| ปลั๊กคู่ + ปลั๊กคู่ | FY44     |

### อลูมิเนียม Aluminium

| Type                | Cat.,No. |
|---------------------|----------|
| ปิดมิด              | FY51     |
| สวิตช์+สวิตช์       | FY52     |
| ปลั๊กคู่ + สวิตช์   | FY53     |
| ปลั๊กคู่ + ปลั๊กคู่ | FY54     |

### สแตนเลส Stainless

| Type                | Cat.,No. |
|---------------------|----------|
| ปิดมิด              | FY61     |
| สวิตช์+สวิตช์       | FY62     |
| ปลั๊กคู่ + สวิตช์   | FY63     |
| ปลั๊กคู่ + ปลั๊กคู่ | FY64     |



## Service Entrance Caps

หมวกเข้าสาย (หัวงูเห่า)



แกล้ม (Clamp)



เกลียว (Thread)

| Size   | Cat., No. |
|--------|-----------|
| 1/2"   | OE11      |
| 3/4"   | OE12      |
| 1"     | OE13      |
| 1-1/4" | OE14      |
| 1-1/2" | OE15      |
| 2"     | OE16      |
| 2-1/2" | OE17      |
| 3"     | OE18      |
| 3-1/2" | OE19      |
| 4"     | OE20      |

| Size   | Cat., No. |
|--------|-----------|
| 1/2"   | OE21      |
| 3/4"   | OE22      |
| 1"     | OE23      |
| 1-1/4" | OE24      |
| 1-1/2" | OE25      |
| 2"     | OE26      |

| Size   | Cat., No. |
|--------|-----------|
| 2-1/2" | OE27      |
| 3"     | OE28      |
| 3-1/2" | OE29      |
| 4"     | OE30      |
| 5"     | OE31      |
| 6"     | OE32      |



## Outlet Boxes for Ball Flange

บ็อกซ์ยึดเป็นลูกหมาก



### 1 ทง

| Size | Cat.,No. |
|------|----------|
| 1/2" | LH11     |
| 3/4" | LH12     |

### 2 ทง

| Size | Cat.,No. |
|------|----------|
| 1/2" | LH21     |
| 3/4" | LH22     |

### 2 ทางจาก

| Size | Cat.,No. |
|------|----------|
| 1/2" | LH71     |
| 3/4" | LH72     |

### 3 ทง

| Size | Cat.,No. |
|------|----------|
| 1/2" | LH31     |
| 3/4" | LH32     |

### 4 ทง

| Size | Cat.,No. |
|------|----------|
| 1/2" | LH41     |
| 3/4" | LH42     |

## Ball Flange

แป้นลูกหมาก



| Size | Cat.,No. |
|------|----------|
| 1/2" | LH01     |
| 3/4" | LH02     |

## Threaded Tubelet Reducers

เกลียวลด



Zinc Alloy  
1/2" ~ 1"



Aluminium  
1-1/4" ~ 6"

| Male   | Reduce to | Female | Cat.,No. |
|--------|-----------|--------|----------|
| 3/4"   | TO        | 1/2"   | RN21     |
| 1"     | TO        | 1/2"   | RN31     |
| 1"     | TO        | 3/4"   | RN32     |
| 1-1/4" | TO        | 1/2"   | RN41     |
| 1-1/4" | TO        | 3/4"   | RN42     |
| 1-1/4" | TO        | 1"     | RN43     |
| 1-1/2" | TO        | 1/2"   | RN51     |

## Close-Up Plugs

ลูกอุดเกลียว



Aluminium  
1/2" ~ 1"



Aluminium  
1-1/4" ~ 6"

| Size   | Cat.,No. |
|--------|----------|
| 1/2"   | CU21     |
| 3/4"   | CU22     |
| 1"     | CU23     |
| 1-1/4" | CU24     |
| 1-1/2" | CU25     |
| 2"     | CU26     |
| 2-1/2" | CU27     |
| 3"     | CU28     |
| 3-1/2" | CU29     |
| 4"     | CU30     |
| 5"     | CU31     |
| 6"     | CU32     |

| Male   | Reduce to | Female | Cat.,No. |
|--------|-----------|--------|----------|
| 1-1/2" | TO        | 3/4"   | RN52     |
| 1-1/2" | TO        | 1"     | RN53     |
| 1-1/2" | TO        | 1-1/4" | RN54     |
| 2"     | TO        | 1/2"   | RN61     |
| 2"     | TO        | 3/4"   | RN62     |
| 2"     | TO        | 1"     | RN63     |
| 2"     | TO        | 1-1/4" | RN64     |
| 2"     | TO        | 1-1/2" | RN65     |
| 2-1/2" | TO        | 1"     | RN73     |
| 2-1/2" | TO        | 1-1/4" | RN74     |
| 2-1/2" | TO        | 1-1/2" | RN75     |
| 2-1/2" | TO        | 2"     | RN76     |
| 3"     | TO        | 1-1/4" | RN84     |
| 3"     | TO        | 1-1/2" | RN85     |
| 3"     | TO        | 2"     | RN86     |
| 3"     | TO        | 2-1/2" | RN87     |
| 3-1/2" | TO        | 2"     | RN96     |
| 3-1/2" | TO        | 3"     | RN98     |
| 4"     | TO        | 2-1/2" | RNA7     |
| 4"     | TO        | 3"     | RNA8     |
| 4"     | TO        | 3-1/2" | RNA9     |
| 5"     | TO        | 3"     | RNB8     |
| 5"     | TO        | 4"     | RNBA     |
| 6"     | TO        | 3"     | RNC8     |
| 6"     | TO        | 4"     | RNCA     |
| 6"     | TO        | 5"     | RNCB     |



P.V.C. 1/2" ~ 2"

| Size   | Cat.,No. |
|--------|----------|
| 1/2"   | CUP21    |
| 3/4"   | CUP22    |
| 1"     | CUP23    |
| 1-1/4" | CUP24    |
| 1-1/2" | CUP25    |
| 2"     | CUP26    |

## Rain Tight Hub Connectors

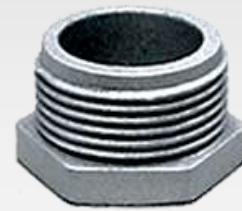
ฮับคอนเนคเตอร์กันน้ำ



| Size   | Cat.,No. |
|--------|----------|
| 1/2"   | HC21     |
| 3/4"   | HC22     |
| 1"     | HC23     |
| 1-1/4" | HC24     |
| 1-1/2" | HC25     |
| 2"     | HC26     |
| 2-1/2" | HC27     |
| 3"     | HC28     |
| 3-1/2" | HC29     |
| 4"     | HC30     |

## Chase Nipples

เชสนิปเปิ้ล



| Size   | Cat.,No. |
|--------|----------|
| 1/2"   | HN21     |
| 3/4"   | HN22     |
| 1"     | HN23     |
| 1-1/4" | HN24     |
| 1-1/2" | HN25     |
| 2"     | HN26     |
| 2-1/2" | HN27     |
| 3"     | HN28     |
| 3-1/2" | HN29     |
| 4"     | HN30     |
| 5"     | HN31     |
| 6"     | HN32     |

## Electro Galvanized Nipples

ท่อหนาช่วงสั้น



เกลียวตลอด

| Size   | Cat., No. |
|--------|-----------|
| 1/2"   | NPB21     |
| 3/4"   | NPB22     |
| 1"     | NPB23     |
| 1-1/4" | NPB24     |
| 1-1/2" | NPB25     |
| 2"     | NPB26     |
| 2-1/2" | NPB27     |
| 3"     | NPB28     |
| 3-1/2" | NPB29     |
| 4"     | NPB30     |

## Erickson Couplings

อีริคสัน คู่ปลั่ง



| Size | Cat.,No. |
|------|----------|
| 1/2" | ERS21    |
| 3/4" | ERS22    |
| 1"   | ERS23    |



## Liquid Tight Flexible Connectors

คอนเนคเตอร์จับท่ออ่อนกันน้ำ



**Straight**

| Size   | Cat.,No. |
|--------|----------|
| 1/2"   | RFN21    |
| 3/4"   | RFN22    |
| 1"     | RFN23    |
| 1-1/4" | RFN24    |
| 1-1/2" | RFN25    |
| 2"     | RFN26    |
| 2-1/2" | RFN27    |
| 3"     | RFN28    |
| 4"     | RFN30    |



**45°**

| Size   | Cat.,No. |
|--------|----------|
| 1/2"   | RFNA21   |
| 3/4"   | RFNA22   |
| 1"     | RFNA23   |
| 1-1/4" | RFNA24   |
| 1-1/2" | RFNA25   |
| 2"     | RFNA26   |
| 2-1/2" | RFNA27   |
| 3"     | RFNA28   |
| 4"     | RFNA30   |



**90°**

| Size   | Cat.,No. |
|--------|----------|
| 1/2"   | RFNQ21   |
| 3/4"   | RFNQ22   |
| 1"     | RFNQ23   |
| 1-1/4" | RFNQ24   |
| 1-1/2" | RFNQ25   |
| 2"     | RFNQ26   |
| 2-1/2" | RFNQ27   |
| 3"     | RFNQ28   |
| 4"     | RFNQ30   |

## Flexible Conduits

ท่ออ่อนเหล็ก



| Size   | Cat.,No. |
|--------|----------|
| 1/2"   | FD11     |
| 3/4"   | FD12     |
| 1"     | FD13     |
| 1-1/4" | FD14     |
| 1-1/2" | FD15     |
| 2"     | FD16     |
| 2-1/2" | FD17     |
| 3"     | FD18     |
| 4"     | FD20     |

## Flexible Connectors

คอนเนคเตอร์จับท่ออ่อนเหล็ก



| Size   | Cat.,No. |
|--------|----------|
| 1/2"   | FN01     |
| 3/4"   | FN02     |
| 1"     | FN03     |
| 1-1/4" | FN04     |
| 1-1/2" | FN05     |
| 2"     | FN06     |
| 2-1/2" | FN07     |
| 3"     | FN08     |
| 3-1/2" | FN09     |
| 4"     | FN10     |

## Liquid Tight Flexible Conduits

ท่ออ่อนกันน้ำ



TEE FLEX"

| Size   | Cat.,No. |
|--------|----------|
| 1/2"   | RFD21    |
| 3/4"   | RFD22    |
| 1"     | RFD23    |
| 1-1/4" | RFD24    |
| 1-1/2" | RFD25    |
| 2"     | RFD26    |
| 2-1/2" | RFD27    |
| 3"     | RFD28    |
| 4"     | RFD30    |



## E.M.T. Conduit & Elbows

ท่อบาง , โด้งบาง



**Panasonic**



### Straight

| Size   | Cat.,No. |
|--------|----------|
| 1/2"   | EMT11    |
| 3/4"   | EMT12    |
| 1"     | EMT13    |
| 1-1/4" | EMT14    |
| 1-1/2" | EMT15    |
| 2"     | EMT16    |

### 45°

| Size   | Cat.,No. |
|--------|----------|
| 1/2"   | EBA11    |
| 3/4"   | EBA12    |
| 1"     | EBA13    |
| 1-1/4" | EBA14    |
| 1-1/2" | EBA15    |
| 2"     | EBA16    |

### 90°

| Size   | Cat.,No. |
|--------|----------|
| 1/2"   | EB11     |
| 3/4"   | EB12     |
| 1"     | EB13     |
| 1-1/4" | EB14     |
| 1-1/2" | EB15     |
| 2"     | EB16     |



## I.M.C. Conduit & Elbows

ท่อหนา , โค้งหนา



Panasonic



### Straight

| Size   | Cat.,No. |
|--------|----------|
| 1/2"   | IMC21    |
| 3/4"   | IMC22    |
| 1"     | IMC23    |
| 1-1/4" | IMC24    |
| 1-1/2" | IMC25    |
| 2"     | IMC26    |
| 2-1/2" | IMC27    |
| 3"     | IMC28    |
| 3-1/2" | IMC29    |
| 4"     | IMC30    |

### 45°

| Size   | Cat.,No. |
|--------|----------|
| 1/2"   | IBA21    |
| 3/4"   | IBA22    |
| 1"     | IBA23    |
| 1-1/4" | IBA24    |
| 1-1/2" | IBA25    |
| 2"     | IBA26    |
| 2-1/2" | IBA27    |
| 3"     | IBA28    |
| 3-1/2" | IBA29    |
| 4"     | IBA30    |

### 90°

| Size   | Cat.,No. |
|--------|----------|
| 1/2"   | IB21     |
| 3/4"   | IB22     |
| 1"     | IB23     |
| 1-1/4" | IB24     |
| 1-1/2" | IB25     |
| 2"     | IB26     |
| 2-1/2" | IB27     |
| 3"     | IB28     |
| 3-1/2" | IB29     |
| 4"     | IB30     |

## Benders

ที่ดัดท่อบาง



| Size | Cat.,No. |
|------|----------|
| 1/2" | BD11     |
| 3/4" | BD12     |
| 1"   | BD13     |

## Hickeys

ที่ดัดท่อหนา



| Size        | Cat.,No. |
|-------------|----------|
| 1/2" ~ 3/4" | HK212    |
| 1" ~ 1-1/4" | HK234    |

## Electrical Wire Pulling Lubricant

น้ำยาร้อยสาย



| Cat.,No. |
|----------|
| WPOO     |



## E.M.T. Connectors

คอนเนคเตอร์จับท่อบาง



**คอนฯ บาง**  
Zinc Alloy

| Size   | Cat., No. |
|--------|-----------|
| 1/2"   | EN11      |
| 3/4"   | EN12      |
| 1"     | EN13      |
| 1-1/4" | EN14      |
| 1-1/2" | EN15      |
| 2"     | EN16      |



**คอนฯ บางก้นน้ำ**  
Zinc Alloy

| Size   | Cat., No. |
|--------|-----------|
| 1/2"   | RCN11     |
| 3/4"   | RCN12     |
| 1"     | RCN13     |
| 1-1/4" | RCN14     |
| 1-1/2" | RCN15     |
| 2"     | RCN16     |



**คอนฯ บาง**  
Mild Steel

| Size   | Cat., No. |
|--------|-----------|
| 1/2"   | MEN11     |
| 3/4"   | MEN12     |
| 1"     | MEN13     |
| 1-1/4" | MEN14     |
| 1-1/2" | MEN15     |
| 2"     | MEN16     |



**คอนฯ บางก้นน้ำ**  
Mild Steel

| Size   | Cat., No. |
|--------|-----------|
| 1/2"   | MRCN11    |
| 3/4"   | MRCN12    |
| 1"     | MRCN13    |
| 1-1/4" | MRCN14    |
| 1-1/2" | MRCN15    |
| 2"     | MRCN16    |

## E.M.T. Couplings

ข้อต่อจับท่อบาง



**ข้อต่อ บาง**  
Zinc Alloy

| Size   | Cat., No. |
|--------|-----------|
| 1/2"   | EP11      |
| 3/4"   | EP12      |
| 1"     | EP13      |
| 1-1/4" | EP14      |
| 1-1/2" | EP15      |
| 2"     | EP16      |



**ข้อต่อ บางก้นน้ำ**  
Zinc Alloy

| Size   | Cat., No. |
|--------|-----------|
| 1/2"   | RCP11     |
| 3/4"   | RCP12     |
| 1"     | RCP13     |
| 1-1/4" | RCP14     |
| 1-1/2" | RCP15     |
| 2"     | RCP16     |



**ข้อต่อ บาง**  
Mild Steel

| Size   | Cat., No. |
|--------|-----------|
| 1/2"   | MEP11     |
| 3/4"   | MEP12     |
| 1"     | MEP13     |
| 1-1/4" | MEP14     |
| 1-1/2" | MEP15     |
| 2"     | MEP16     |



**ข้อต่อ บางก้นน้ำ**  
Mild Steel

| Size   | Cat., No. |
|--------|-----------|
| 1/2"   | MRCP11    |
| 3/4"   | MRCP12    |
| 1"     | MRCP13    |
| 1-1/4" | MRCP14    |
| 1-1/2" | MRCP15    |
| 2"     | MRCP16    |



## Locknuts

ลอคนัท



| Size   | Cat.,No. |
|--------|----------|
| 1/2"   | LN21     |
| 3/4"   | LN22     |
| 1"     | LN23     |
| 1-1/4" | LN24     |
| 1-1/2" | LN25     |
| 2"     | LN26     |
| 2-1/2" | LN27     |
| 3"     | LN28     |
| 3-1/2" | LN29     |
| 4"     | LN30     |

## I.M.C. Couplings

ข้อต่อหนา



| Size   | Cat.,No. |
|--------|----------|
| 1/2"   | IP21     |
| 3/4"   | IP22     |
| 1"     | IP23     |
| 1-1/4" | IP24     |
| 1-1/2" | IP25     |
| 2"     | IP26     |
| 2-1/2" | IP27     |
| 3"     | IP28     |
| 3-1/2" | IP29     |
| 4"     | IP30     |

## Bushings

บุชซิ่ง



Zinc Alloy

| Size   | Cat.,No. |
|--------|----------|
| 1/2"   | BH21     |
| 3/4"   | BH22     |
| 1"     | BH23     |
| 1-1/4" | BH24     |
| 1-1/2" | BH25     |
| 2"     | BH26     |
| 2-1/2" | BH27     |
| 3"     | BH28     |
| 3-1/2" | BH29     |
| 4"     | BH30     |



P.P.

| Size   | Cat.,No. |
|--------|----------|
| 1/2"   | BHP21    |
| 3/4"   | BHP22    |
| 1"     | BHP23    |
| 1-1/4" | BHP24    |
| 1-1/2" | BHP25    |
| 2"     | BHP26    |
| 2-1/2" | BHP27    |
| 3"     | BHP28    |
| 3-1/2" | BHP29    |
| 4"     | BHP30    |





## E.M.T Straps

แคล้มจับท่อบาง



| Type   | Cat., No. |
|--------|-----------|
| 1/2"   | CL11      |
| 3/4"   | CL12      |
| 1"     | CL13      |
| 1-1/4" | CL14      |
| 1-1/2" | CL15      |
| 2"     | CL16      |

## I.M.C. Straps

แคล้มจับท่อหนา



| Size   | Cat., No. |
|--------|-----------|
| 1/2"   | CL21      |
| 3/4"   | CL22      |
| 1"     | CL23      |
| 1-1/4" | CL24      |
| 1-1/2" | CL25      |

| Size   | Cat., No. |
|--------|-----------|
| 2"     | CL26      |
| 2-1/2" | CL27      |
| 3"     | CL28      |
| 3-1/2" | CL29      |
| 4"     | CL30      |

## Stainless Straps

แคล้มจับท่อหนาสแตนเลส

SUS 304



| Size   | Cat.,No. |
|--------|----------|
| 1/2"   | TCL21    |
| 3/4"   | TCL22    |
| 1"     | TCL23    |
| 1-1/4" | TCL24    |
| 1-1/2" | TCL25    |

| Size   | Cat.,No. |
|--------|----------|
| 2"     | TCL26    |
| 2-1/2" | TCL27    |
| 3"     | TCL28    |
| 3-1/2" | TCL29    |
| 4"     | TCL30    |

## C-Channels

รางซี



| Type | Size              | Cat.,No. |
|------|-------------------|----------|
| ตั้  | 25 x 40 x 1200mm. | CC00     |
|      | 25 x 40 x 2400mm. | CC01     |
| ล้   | 40 x 40 x 1200mm. | CC03     |

## Stainless C-Channels

รางซีสแตนเลส



SUS 304

| Type | Size              | Cat.,No. |
|------|-------------------|----------|
| ตั้  | 25 x 40 x 1200mm. | TCC00    |
|      | 25 x 40 x 2400mm. | TCC01    |

## Wire Nuts

วายนัท



| Color  | Cat.,No. | Size                              | Total          |
|--------|----------|-----------------------------------|----------------|
| Orange | WN33     | For Cable 2 x 1/5 mm <sup>2</sup> | 100 Pcs. / Box |
| Yellow | WN44     | For Cable 2 x 4 mm <sup>2</sup>   | 100 Pcs. / Box |
| Red    | WN66     | For Cable 2 x 6 mm <sup>2</sup>   | 100 Pcs. / Box |
| Gray   | WN99     | For Cable 2 x 10 mm <sup>2</sup>  | 50 Pcs. / Box  |

## Screw for Conduit Clamp

สกรู สำหรับ แคล้มประกัษ



| Cat.,No. |
|----------|
| CC09     |

## Screw+Nut for Applicable Hangers

สกรู+น๊อต สำหรับ แคล้มวงเดือน



| Size        | Cat.,No. |
|-------------|----------|
| 1/2" ~ 1"   | BC41     |
| 1 1/4" ~ 2" | BC42     |
| 2-1/2" ~ 3" | BC43     |



## Conduit Clamps

แคล้มประกับ



**E.M.T.**

| Size   | Cat., No. |
|--------|-----------|
| 1/2"   | CC11      |
| 3/4"   | CC12      |
| 1"     | CC13      |
| 1-1/4" | CC14      |
| 1-1/2" | CC15      |
| 2"     | CC16      |

## Stainless Conduit Clamps

แคล้มประกับสแตนเลส



SUS 304

**I.M.C.**

| Size   | Cat., No. |
|--------|-----------|
| 1/2"   | CC21      |
| 3/4"   | CC22      |
| 1"     | CC23      |
| 1-1/4" | CC24      |
| 1-1/2" | CC25      |
| 2"     | CC26      |
| 2-1/2" | CC27      |
| 3"     | CC28      |
| 3-1/2" | CC29      |
| 4"     | CC30      |

| Size   | Cat., No. |
|--------|-----------|
| 1/2"   | TCC21     |
| 3/4"   | TCC22     |
| 1"     | TCC23     |
| 1-1/4" | TCC24     |
| 1-1/2" | TCC25     |
| 2"     | TCC26     |
| 2-1/2" | TCC27     |
| 3"     | TCC28     |
| 3-1/2" | TCC29     |
| 4"     | TCC30     |
| 5"     | TCC31     |
| 6"     | TCC32     |

## Applicable Hangers

แคล้มวงเดือน



E.M.T.

| Size | Cat., No. |
|------|-----------|
| 1/2" | BC11      |
| 3/4" | BC12      |
| 1"   | BC13      |

I.M.C.

| Size   | Cat., No. |
|--------|-----------|
| 1/2"   | BC21      |
| 3/4"   | BC22      |
| 1"     | BC23      |
| 1-1/4" | BC24      |
| 1-1/2" | BC25      |
| 2"     | BC26      |
| 2-1/2" | BC27      |
| 3"     | BC28      |
| 3-1/2" | BC29      |
| 4"     | BC30      |

## Stainless Applicable Hangers

แคล้มวงเดือนสแตนเลส

SUS 304



| Size   | Cat., No. |
|--------|-----------|
| 1/2"   | TBC21     |
| 3/4"   | TBC22     |
| 1"     | TBC23     |
| 1-1/4" | TBC24     |
| 1-1/2" | TBC25     |
| 2"     | TBC26     |

## Screw+Nuts for Stainless Conduit Clamp

สกรู+น๊อต สำหรับ แคล้มประกับสแตนเลส



| Cat.,No. |
|----------|
| TCC09    |

## Screw+Nuts for Stainless Applicable Hangers

สกรู+น๊อต สำหรับ แคล้มวงเดือนสแตนเลส



| Size        | Cat.,No. |
|-------------|----------|
| 1/2" ~ 1"   | TBC41    |
| 1 1/4" ~ 2" | TBC42    |
| 2-1/2" ~ 3" | TBC43    |

## Beam Clamps

พินจระเข้



| Type                    | Cat.,No. |
|-------------------------|----------|
| TYPE 1 For Beam 14 mm.  | BC01     |
| TYPE 1W For Beam 20 mm. | BC01W    |
| TYPE 2W For Beam 30 mm. | BC02W    |

## Stainless Beam Clamps

พินจระเข้สแตนเลส



| Type                   | Cat.,No. |
|------------------------|----------|
| TYPE 1 For Beam 14 mm. | TBC01    |

## Liquid Tight Cable Connectors

คอนเนคเตอร์จับสายอ่อนกันน้ำ



Size 1/2" Cable Diameter 9~11 mm.  
Size 3/4" Cable Diameter 12~14 mm.

**Straight**

| Size | Cat.,No. |
|------|----------|
| 1/2" | RCC21    |
| 3/4" | RCC22    |

**45°**

| Size | Cat.,No. |
|------|----------|
| 1/2" | RCA21    |
| 3/4" | RCA22    |

**โค้ง 90°**

| Size | Cat.,No. |
|------|----------|
| 1/2" | RCQ21    |
| 3/4" | RCQ22    |

## N.M. Connectors

เอ็น.เอ็ม.คอนเนคเตอร์



| Size | Cat.,No. |
|------|----------|
| 1/2" | NM01     |
| 3/4" | NM02     |
| 1"   | NM03     |

## Drop Wire Clamp

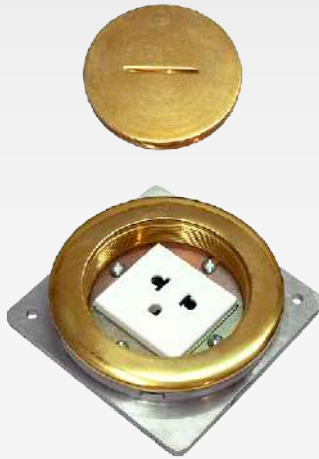
ดรอพวายเป็นแคลมป์



| Cat.,No. |
|----------|
| DW00     |

## Floor Outlet Boxes 4" x 4"

ฝาทองเหลืองฝังพื้น 4" x 4"



US1005

ชุดสินค้าไม่รวมตัวรับ  
Receptacle Not Include

| Support Device                              | Type                        | Cat.,No. |
|---|-----------------------------|----------|
| 8p UTP Modular Jack<br>T 568 B Stand & Jack | แจ๊คคอมพิวเตอร์<br>1 Device | FPU8     |



WEG10919



WEG2164



WEG2166



WEG1191K

| Type                         | Cat.,No. |
|------------------------------|----------|
| เนชั่นเนล เดี่ยว<br>1 Device | FPNW1    |
| เนชั่นเนล คู่<br>2 Device    | FPNW2    |



## Floor Outlet Boxes 5" x 5"

ฝาทองเหลืองฝังพื้น 5" x 5"

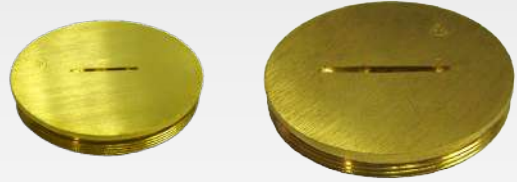


ชุดสินค้าไม่รวมตัวรับ  
Receptacle Not Include

| Support Device   | Type                                | Cat.,No. |
|------------------|-------------------------------------|----------|
| All Brand        | 1~3 Device                          | FP-All   |
| <b>CLIPSAL</b>   | C-Concept<br>3426UEST2M             | FPC3426  |
| <b>Panasonic</b> | WIDE-SERIES<br>WEG1582_<br>WEG1592_ | FP1592   |
| <b>bticino</b>   | Advance<br>M9025G                   | FPTM9025 |

## Close-Up Plug For Floor Outlet Box

ลูกอุดทองเหลืองสำหรับฝาทองเหลือง



| For Size | Cat.,No. |
|----------|----------|
| 4" x 4"  | FPC4     |
| 5" x 5"  | FPC5     |

## Floor Outlet Cup with Eagle Receptacle

ฝาทองเหลืองปลั๊กอีเกิ้ล



รวมตัวรับ Eagle No.817  
Receptacle Include

| Cat.,No. |
|----------|
| FP817B   |

## Jumbo Square Box & Cover 5" x 5"

สแควบ็อกซ์จั้มโบ้และฝา 5" x 5"



| Type                          | Cat.,No. |
|-------------------------------|----------|
| สแควบ็อกซ์ 1/2" x 3/4" x 1/2" | BXJ      |
| ฝาสแควบ็อกซ์ ปิดมิด           | BYJ      |

# Lightning Protection Fitting & Accessories



## Air Terminal Bases

ฐานล่อฟ้า



กลม



เรียว



2 ชั้น



5 เหลี่ยม 2 ชั้น



จั่ว



ปรับมุม 180°



5 เหลี่ยมติดพื้น



5 เหลี่ยมติดผนัง

| Type         | Cat.,No. |
|--------------|----------|
| กลม          | AT00     |
| เรียว        | AT11     |
| จั่ว         | AT12     |
| ปรับมุม 180° | AT18     |

| Type             | Cat.,No. |
|------------------|----------|
| 2 ชั้น           | AT24     |
| 5 เหลี่ยม 2 ชั้น | AT25     |
| 5 เหลี่ยมติดพื้น | AT51     |
| 5 เหลี่ยมติดผนัง | AT52     |

## Stainless Nut for Air Terminal

น็อตสแตนเลส สำหรับ เสาล่อฟ้า



Cat.,No.

ATN58

## Air Terminal Rods

เสาต่อฟ้า



**Screw Type 5/8"**

| Length  | Cat.,No. |
|---------|----------|
| 30 cm.  | AB5030   |
| 50 cm.  | AB5050   |
| 60 cm.  | AB5060   |
| 100 cm. | AB5100   |
| 150 cm. | AB5150   |
| 200 cm. | AB5200   |
| 300 cm. | AB5300   |

**Screw Type 3/4"**

| Length  | Cat.,No. |
|---------|----------|
| 30 cm.  | AB6030   |
| 50 cm.  | AB6050   |
| 60 cm.  | AB6060   |
| 100 cm. | AB6100   |
| 150 cm. | AB6150   |
| 200 cm. | AB6200   |
| 300 cm. | AB6300   |



**Single Type 5/8"**

| Length  | Cat.,No. |
|---------|----------|
| 30 cm.  | AA5030   |
| 50 cm.  | AA5050   |
| 60 cm.  | AA5060   |
| 100 cm. | AA5100   |
| 150 cm. | AA5150   |
| 200 cm. | AA5200   |
| 300 cm. | AA5300   |

**Single Type 3/4"**

| Length  | Cat.,No. |
|---------|----------|
| 30 cm.  | AA6030   |
| 50 cm.  | AA6050   |
| 60 cm.  | AA6060   |
| 100 cm. | AA6100   |
| 150 cm. | AA6150   |
| 200 cm. | AA6200   |
| 300 cm. | AA6300   |

## 3 V-Shape Air Terminals

ล่อฟ้า 3 แฉก



| Use With Rod | Cat.,No. |
|--------------|----------|
| 5/8"         | AT32     |

| Use With Conduit | Cat.,No. |
|------------------|----------|
| 1/2"             | AT31     |
| 3/4"             | AT33     |

## Split-Bolts

สปลิตโบลท์



| Type               | Cat.,No. |
|--------------------|----------|
| 6 mm <sup>2</sup>  | SP006    |
| 10 mm <sup>2</sup> | SP010    |
| 16 mm <sup>2</sup> | SP016    |
| 25 mm <sup>2</sup> | SP025    |
| 35 mm <sup>2</sup> | SP035    |
| 50 mm <sup>2</sup> | SP050    |

| Type                | Cat.,No. |
|---------------------|----------|
| 70 mm <sup>2</sup>  | SP070    |
| 95 mm <sup>2</sup>  | SP095    |
| 120 mm <sup>2</sup> | SP120    |
| 185 mm <sup>2</sup> | SP185    |
| 240 mm <sup>2</sup> | SP240    |
| 300 mm <sup>2</sup> | SP300    |
| 500 mm <sup>2</sup> | SP500    |

## U Clamp 2 Screws

ยูแคล้ม 2 สกรู



| Type                      | Cat.,No. |
|---------------------------|----------|
| 6 ~ 35 mm <sup>2</sup>    | UC81     |
| 50 ~ 70 mm <sup>2</sup>   | UC82     |
| 95 ~ 120 mm <sup>2</sup>  | UC83     |
| 150 ~ 185 mm <sup>2</sup> | UC84     |
| 240 ~ 300 mm <sup>2</sup> | UC85     |
| 400 mm <sup>2</sup>       | UC86     |
| 500 mm <sup>2</sup>       | UC87     |

## Terminal Lugs

หางปลาทองแดง



Cat.,No.  
TL81, TL82



Cat.,No.  
TL83, TL84, TL85



Cat.,No.  
TL86, TL87

| Type                      | Cat.,No. |
|---------------------------|----------|
| 6 ~ 35 mm <sup>2</sup>    | TL81     |
| 50 ~ 70 mm <sup>2</sup>   | TL82     |
| 95 ~ 120 mm <sup>2</sup>  | TL83     |
| 150 ~ 185 mm <sup>2</sup> | TL84     |
| 240 ~ 300 mm <sup>2</sup> | TL85     |
| 400 mm <sup>2</sup>       | TL86     |
| 500 mm <sup>2</sup>       | TL87     |

## Ground Test Box

กราวด์เทสบ็อกซ์



Cat.,No.

GRTB

## Floor Outlet Cup

ฝาทองเหลือง ถ้วยกลม



Cat.,No.

FPCUP

## Copper Electrolyzed Ground Rod

กราวห์รอดชุบแดง



| Ø X ยาว          | Cat.,No. |
|------------------|----------|
| Ø 5/8" X 300 cm. | GR13     |
| Ø 3/4" X 300 cm. | GR33     |

## Copper Electrolyzed Ground Rod Threaded 2 end

กราวห์รอดชุบแดง เกลียวหัวท้าย



| ชุบ - เติม       | Cat.,No. |
|------------------|----------|
| Ø 5/8" X 300 cm. | GR23     |

## Copper Clad Ground Rods

กราวห์รอดหุ้มปลอก



| หุ้ม 5/8"        | Cat.,No. |
|------------------|----------|
| Ø 5/8" X 180 cm. | GR51     |
| Ø 5/8" X 240 cm. | GR52     |
| Ø 5/8" X 300 cm. | GR53     |

| หุ้ม 3/4"        | Cat.,No. |
|------------------|----------|
| Ø 3/4" X 180 cm. | GR61     |
| Ø 3/4" X 240 cm. | GR62     |
| Ø 3/4" X 300 cm. | GR63     |

## Hot Dip Galvanized Ground Rod

กราวห์รอดอาบสังกะสี



| อาบสังกะสี - เติม | Cat.,No. |
|-------------------|----------|
| Ø 5/8" X 300 cm.  | HGR13    |

## Ellipse Ground Rods

แคล้มหัวใจ



| Dive Rod | Cat., No. |
|----------|-----------|
| 5/8"     | GR71      |
| 3/4"     | GR72      |

## Ground Rod Coupling 5/8"

ข้อต่อกราวห์รอด 5/8"



| Cat.,No. |
|----------|
| GRP71H   |

## U Copper Ground Clamp

กราวห์แคล้มทองแดง



Support rod 5/8", 3/4"  
Support cable #25-120mm<sup>2</sup>

| Cat.,No. |
|----------|
| GR73     |

## 3 Grooves Ground Clamp

กราวห์แคล้มทองแดง 3 ร่อง



Support rod 5/8", 3/4"  
Support cable #25-70mm<sup>2</sup>

| Cat.,No. |
|----------|
| GR74     |

## Copper Cable Clamps

แคล้มจับสายทองแดงเปลือย



แคล้มจับ  
สายทองแดงเปลือย  
Cat.,No.GR81, GR82, GR83



สแควแคล้มจับ  
สายทองแดงเปลือย  
Cat.,No.GR85



ที แคล้มจับ  
สายทองแดงเปลือย  
Cat.,No.GR86



แคล้มจับ  
สายทองแดงเปลือย 4"  
Cat.,No.GR84

| Type   | For Cable                       | Cat.,No. |
|--|---------------------------------|----------|
| แคล้มจับสายทองแดงเปลือย 25 ~ 35 mm <sup>2</sup>  | Single 25 ~ 35 mm <sup>2</sup>  | GR81     |
| แคล้มจับสายทองแดงเปลือย 50 ~ 70 mm <sup>2</sup>  | Single 50 ~ 70 mm <sup>2</sup>  | GR82     |
| แคล้มจับสายทองแดงเปลือย 95 ~ 120 mm <sup>2</sup> | Single 95 ~ 120 mm <sup>2</sup> | GR83     |
| แคล้มจับสายทองแดงเปลือย 4"                       | Single 50 ~ 95 mm <sup>2</sup>  | GR84     |
| สแควแคล้มจับสายทองแดงเปลือย                      | Cross 35 ~ 50 mm <sup>2</sup>   | GR85     |
| ที แคล้มจับสายทองแดงเปลือย                       | 3 Way 25 ~ 35 mm <sup>2</sup>   | GR86     |

## Bus Bare Clamps 3 x 25 mm.

แคล้มจับบัสบาร์ทองแดง 3 x 25 mm.



แคล้มจับ  
บัสบาร์ทองแดง  
Cat.,No.GR91



สแควแคล้มจับ  
บัสบาร์ทองแดง  
Cat.,No.GR92

| Type                      | Cat.,No. |
|---------------------------|----------|
| แคล้มจับบัสบาร์ทองแดง     | GR91     |
| สแควแคล้มจับบัสบาร์ทองแดง | GR92     |

## G.B. Clamps

จี.บี.แคล้ม



GRB 1



GRB 2

For Cable to Flat Surface

| For Cable                | Cat.,No. |
|--------------------------|----------|
| 25 ~ 70 mm <sup>2</sup>  | GRB1     |
| 70 ~ 120 mm <sup>2</sup> | GRB2     |

## Parallel Groove Clamps

พี.จี.แคล้ม



Cat., No. PG10



Cat., No. PG11



Cat., No. PG12, PG13

| For Cable                      | Cat.,No. |
|--------------------------------|----------|
| 1 สกรู 10 mm <sup>2</sup>      | PG10     |
| 1 สกรู 16 ~ 50 mm <sup>2</sup> | PG11     |
| 2 สกรู 16 ~ 70 mm <sup>2</sup> | PG12     |
| 2 สกรู 25 ~ 95 mm <sup>2</sup> | PG13     |

## Connectors Dead End

แคล้มลูกตาล  
(คอนเนคเตอร์รัดปลายสาย)



| For Cable                | Cat., No. |
|--------------------------|-----------|
| 25 ~ 35 mm <sup>2</sup>  | PG01      |
| 50 ~ 70 mm <sup>2</sup>  | PG02      |
| 95 ~ 120 mm <sup>2</sup> | PG03      |

## Mesh Parallel Groove Clamp

แคล้มมือเสือ



Support cable # 50-185 mm<sup>2</sup>

| Cat.,No. |
|----------|
| PG14     |

## Preformed Dead End

ปรีฟอร์มเดดเอ็น



รัดสายหุ้ม

| For Cable           | Cat.,No. |
|---------------------|----------|
| 16 mm <sup>2</sup>  | PFD016   |
| 25 mm <sup>2</sup>  | PFD025   |
| 35 mm <sup>2</sup>  | PFD035   |
| 50 mm <sup>2</sup>  | PFD050   |
| 70 mm <sup>2</sup>  | PFD070   |
| 95 mm <sup>2</sup>  | PFD095   |
| 120 mm <sup>2</sup> | PFD120   |
| 150 mm <sup>2</sup> | PFD150   |
| 185 mm <sup>2</sup> | PFD185   |
| 240mm <sup>2</sup>  | PFD240   |
| 300 mm <sup>2</sup> | PFD300   |
| 400 mm <sup>2</sup> | PFD400   |
| 500 mm <sup>2</sup> | PFD500   |



# Hot Dip Galvanized Conduit Fitting & Accessories



## Hot Dip Galvanized Hexagon Couplings

ข้อต่อสกรูอาบสังกะสี



| Size | Cat., No. |
|------|-----------|
| 3/8" | HCHP20    |
| 1/2" | HCHP21    |

## Hot Dip Galvanized Earth Pit Box

เอิร์ท พัทท์ บ็อกซ์ อาบสังกะสี



| Cat., No. |
|-----------|
| HGREP     |

## Hot Dip Galvanized Round Washers

แหวนกลมอาบสังกะสี



| Type | Cat., No. |
|------|-----------|
| 3/8" | HWR13     |
| 1/2" | HWR14     |

## Hot Dip Galvanized Hexagon Nuts

น็อตสำหรับสกรูแขวนรางตัวซี อาบสังกะสี



| Size | Cat., No. |
|------|-----------|
| 3/8" | HCHN20    |
| 1/2" | HCHN21    |

## Hot Dip Galvanized Spring Washer

แหวนสปริงอาบสังกะสี



| Size | Cat., No. |
|------|-----------|
| 3/8" | HWSPR13   |
| 1/2" | HWSPR14   |

## Hot Dip Galvanized Machine Bolts

สกรูน๊อตอาบสังกะสี



Ø 1/2"

Ø 5/8"

| Type         | Cat.,No. |
|--------------|----------|
| 1/2" ยาว 6"  | HBM406   |
| 1/2" ยาว 8"  | HBM408   |
| 1/2" ยาว 10" | HBM410   |
| 1/2" ยาว 12" | HBM412   |
| 1/2" ยาว 14" | HBM414   |

| Type         | Cat.,No. |
|--------------|----------|
| 5/8" ยาว 6"  | HBM506   |
| 5/8" ยาว 8"  | HBM508   |
| 5/8" ยาว 10" | HBM510   |
| 5/8" ยาว 12" | HBM512   |
| 5/8" ยาว 14" | HBM514   |
| 5/8" ยาว 16" | HBM516   |
| 5/8" ยาว 18" | HBM518   |
| 5/8" ยาว 20" | HBM520   |
| 5/8" ยาว 22" | HBM522   |
| 5/8" ยาว 24" | HBM524   |

## Hot Dip Galvanized Secondary Racks

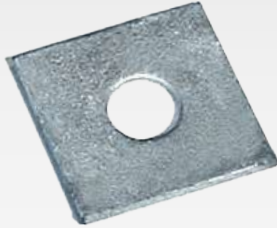
แตรคช่องไฟฟ้าอาบสังกะสี



| Type                   | Cat.,No. |
|------------------------|----------|
| Thickness 5 mm. 1 ช่อง | HSR51    |
| Thickness 5 mm. 3 ช่อง | HSR53    |
| Thickness 5 mm. 5 ช่อง | HSR55    |
| Thickness 5 mm. 7 ช่อง | HSR57    |

## Hot Dip Galvanized Square Washers

แหวน 4 เหลี่ยมอบสังกะสี



| Thickness | Cat.,No. |
|-----------|----------|
| 1/2"      | HWS14    |
| 5/8"      | HWS15    |
| 5/8"      | HWS25    |

## Hot Dip Galvanized Stud Thread Rods

สกรูแขวนรางตัวซี  
อบสังกะสี



| Size            | Cat.,<br>No. |
|-----------------|--------------|
| 3/8" x 1000 mm. | HCH2010      |
| 3/8" x 1500 mm. | HCH2015      |
| 1/2" x 1000 mm. | HCH2110      |
| 1/2" x 1500 mm. | HCH2115      |

## Spool Insulator

ลูกถ้วยอย่างดี



| Cat.,No. |
|----------|
| SR11     |

## Aluminium Tie Wire Ø 4 mm.

ลวดอลูมิเนียมกลม  
Ø 4 mm.



| Cat.,No. |
|----------|
| TW18     |

25 Meter per roll

## Hot Dip Galvanized Surface Covers for Handy Box

ฝาปิดแฮนด์บ็อกซ์  
อบสังกะสี 2"x4"



| Type              | Cat.,No. |
|-------------------|----------|
| Thickness 1.2 mm. | HBV31    |
| Thickness 1.6 mm. | HBV9921  |

## Hot Dip Galvanized Surface Covers for Europa Box

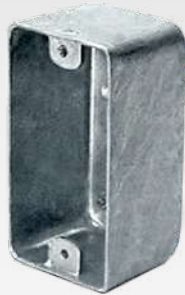
ฝาปิดยุโรปบ็อกซ์  
อบสังกะสี



| Type              | Cat.,No. |
|-------------------|----------|
| Thickness 1.2 mm. | HBV91    |
| Thickness 1.6 mm. | HBV9991  |

## Hot Dip Galvanized Handy Boxes

แฮนด์ดีบ็อกซ์ออบสังกะสี 2"x4"



Thickness 1.2 mm.

| Knockout                         | Cat.,No. |
|----------------------------------|----------|
| ตัด 1/2" x 3/4" x 1/2"           | HBX9212  |
| ลึกลง 3/4"                       | HBX923   |
| ลึกลง ทึบ                        | HBX925   |
| ลึกลง 1/2" x 3/4" x 1/2"         | HBX926   |
| ลึกลง ทึบ ก้นทะลุ                | HBX928   |
| ลึกลง ก้นทะลุ 1/2" x 3/4" x 1/2" | HBX929   |



Thickness 1.6 mm.

| Knockout                 | Cat.,No.  |
|--------------------------|-----------|
| ตัด ทึบ                  | HBX9920E  |
| ตัด 1/2" x 3/4" x 1/2"   | HBX99212E |
| ลึกลง 3/4"               | HBX9923E  |
| ลึกลง ทึบ                | HBX9925E  |
| ลึกลง 1/2" x 3/4" x 1/2" | HBX9926E  |
| ลึกลง ทึบ ก้นทะลุ        | HBX9928E  |

## Hot Dip Galvanized Europa Boxes

ยุโรป้าบ็อกซ์ออบสังกะสี



Thickness 1.2 mm.

| Knockout                         | Cat.,No. |
|----------------------------------|----------|
| ตัด 1/2" x 3/4" x 1/2"           | HBX971   |
| ตัด ก้นทะลุ 1/2" x 3/4" x 1/2"   | HBX972   |
| ลึกลง 3/4"                       | HBX973   |
| ลึกลง ทึบ                        | HBX975   |
| ลึกลง 1/2" x 3/4" x 1/2"         | HBX976   |
| ลึกลง 1" x 3/4"                  | HBX977   |
| ลึกลง ก้นทะลุ 1/2" x 3/4" x 1/2" | HBX979   |
| ลึกลง ทึบ ก้นทะลุ                | HBX9795  |

Thickness 1.6 mm.

| Knockout                 | Cat.,No. |
|--------------------------|----------|
| ตัด 1/2" x 3/4" x 1/2"   | HBX9971E |
| ลึกลง 3/4" ล้วน          | HBX9973E |
| ลึกลง ทึบ                | HBX9975E |
| ลึกลง 1/2" x 3/4" x 1/2" | HBX9976E |
| ลึกลง ทึบ ก้นทะลุ        | HBX9979E |

## Hot Dip Galvanized Square Boxes

สแควบ็อกซ์ออบลังกะสี่ 4"x4"

ชนิดตัน



Thickness 1.2 mm.

| Knockout                        | Cat.,No. |
|---------------------------------|----------|
| ตัน ทึบ                         | HBX940   |
| ตัน 1/2" x 3/4" x 1/2"          | HBX941   |
| ตัน ก้นทะลุ                     | HBX942   |
| ลึ้ก 3/4" ล้วน                  | HBX943   |
| ลึ้ก ทึบ                        | HBX945   |
| ลึ้ก 1/2" x 3/4" x 1/2"         | HBX946   |
| ลึ้ก 3/4" x 1"                  | HBX947   |
| ลึ้ก 1" ล้วน                    | HBX948   |
| ลึ้ก ก้นทะลุ 1/2" x 3/4" x 1/2" | HBX949   |
| ลึ้ก ก้นทะลุ 3/4" x 1"          | HBX950   |
| ลึ้ก ทึบ ก้นทะลุ                | HBX951   |

ชนิดลึ้ก



Thickness 1.6 mm.

| Knockout                | Cat.,No.  |
|-------------------------|-----------|
| ตัน 3/4"                | HBX99431E |
| ตัน ทึบ                 | HBX9940E  |
| ตัน 1/2" x 3/4" x 1/2"  | HBX9941E  |
| ลึ้ก 3/4"               | HBX9943E  |
| ลึ้ก ทึบ                | HBX9945E  |
| ลึ้ก 1/2" x 3/4" x 1/2" | HBX9946E  |
| ลึ้ก ทึบ ก้นทะลุ        | HBX9950E  |

## Hot Dip Galvanized Jumbo Square Boxes

สแควบ็อกซ์จัมโบ้ ออบลังกะสี่



4<sup>11/16"</sup> x 4<sup>11/16"</sup> x 2"  
(119 x 119 x 50 mm.)

Thickness 1.2 mm.

| Knockout | Cat.,No. |
|----------|----------|
| ลึ้ก ทึบ | HBXJ45   |

Thickness 1.6 mm.

| Knockout | Cat.,No. |
|----------|----------|
| ลึ้ก ทึบ | HBX99JB  |

## Hot Dip Galvanized Square Covers for Jumbo Square Box

ฝาปิดสแควบ็อกซ์จัมโบ้ ออบลังกะสี่

## Hot Dip Galvanized Square Covers

ฝาปิดสแควบ็อกซ์ออบลังกะสี่ 4"x4"

ชนิดตัน



| Size              | Cat.,No. |
|-------------------|----------|
| Thickness 1.2 mm. | HBY41    |
| Thickness 1.6 mm. | HBY9941  |

ชนิดลึ้ก



| Size              | Cat.,No. |
|-------------------|----------|
| Thickness 1.2 mm. | HBY51    |
| Thickness 1.6 mm. | HBY9951  |



| Size              | Cat.,No. |
|-------------------|----------|
| Thickness 1.2 mm. | HBY-JB   |
| Thickness 1.6 mm. | HBY99JB  |

## Hot Dip Galvanized Octagon Boxes

อีอกตะก๊อมนบ็อกซอบลั้งกะลี้



Thickness 1.2 mm.

| Knockout                | Cat.,No. |
|-------------------------|----------|
| ตื้น ทบ                 | HBX960   |
| ตื้น 1/2" x 3/4" x 1/2" | HBX961   |
| ตื้น 3/4"               | HBX962   |
| ลึก 3/4"                | HBX963   |
| ลึก ทบ                  | HBX965   |
| ลึก 1/2" x 3/4" x 1/2"  | HBX966   |
| ลึก 3/4" x 1"           | HBX967   |

Thickness 1.6 mm.

| Knockout         | Cat.,No. |
|------------------|----------|
| ตื้น 1/2" x 3/4" | HBX9961E |
| ลึก 3/4"         | HBX9963E |
| ลึก ทบ           | HBX9965E |
| ลึก 1/2" x 3/4"  | HBX9966E |

## Screw + Nut for Hot Dip Galvanized Conduit Clamp

สกรู+น็อต สำหรับ แคล้มประกบอบลั้งกะลี้



Cat.,No.

HCC09

## Hot Dip Galvanized Surface Cover for Octagon Boxes

ฝาปิดอีอกตะก๊อมนบ็อกซอบลั้งกะลี้



Knockout

Cat.,No.

Thickness 1.2 mm.

HBX71

Thickness 1.6 mm.

HBX9971

## Hot Dip Galvanized M.K. Boxes

เอ็ม.เค.บ็อกซอบลั้งกะลี้ 1.2mm.



Type

Knockout

Cat.,No.

Single Gang

ตื้น 1/2" x 3/4"

HBX933

Single Gang

ลึก 1/2" x 3/4"

HBX934

Double Gang

ลึก 3/4" x 1/2" x 3/4"

HBX935

## Screw + Nut for Hot Dip Galvanized Applicable Hangers

สกรู+น็อต สำหรับ แคล้มวงเดืออนอบลั้งกะลี้



Size

Cat.,No.

1/2" ~ 1"

HBC41

1 1/4" ~ 2"

HBC42

2-1/2" ~ 3"

HBC43

## Hot Dip Galvanized B.S. Boxes 86 x 86 mm.

บี.เอส.บ็อกซ์ออบลังกะสี่ 86x86 mm.



| Size | B.S.<br>Cat.,No. | B.S.C.<br>Cat.,No. | B.S.S.<br>Cat.,No. | B.S.C.C.<br>Cat.,No. | B.S.L.<br>Cat.,No. |
|------|------------------|--------------------|--------------------|----------------------|--------------------|
| 1/2" | HBS11            | HBS24              | HBS21              | HBS31                | HBS71              |
| 3/4" | HBS12            | HBS25              | HBS22              | HBS32                | HBS72              |
| 1"   | HBS13            | HBS26              |                    |                      |                    |

## Hot Dip Galvanized F.S. Boxes 76 x 116 mm.

เอฟ.เอส.บ็อกซ์ออบลังกะสี่ 76x116 mm.

Material : Cast Iron



| Size | F.S.<br>Cat.,No. | F.S.C.<br>Cat.,No. | F.S.S.<br>Cat.,No. | F.S.C.C.<br>Cat.,No. | F.S.C.D.<br>Cat.,No. |
|------|------------------|--------------------|--------------------|----------------------|----------------------|
| 1/2" | HFX11            | HFX24              | HFX21              | HFX31                | HFX41                |
| 3/4" | HFX12            | HFX25              | HFX22              | HFX32                | HFX42                |
| 1"   | HFX13            | HFX26              |                    |                      |                      |



**F.S.W.**

| Size | Cat.,No. |
|------|----------|
| 1/2" | HFXW11   |
| 3/4" | HFXW12   |
| 1"   | HFXW13   |



**F.S.C.W.**

| Size | Cat.,No. |
|------|----------|
| 1/2" | HFXW24   |
| 3/4" | HFXW25   |
| 1"   | HFXW26   |



**F.S.S.W.**

| Size | Cat.,No. |
|------|----------|
| 1/2" | HFXW21   |
| 3/4" | HFXW22   |



**F.S.C.C.W.**

| Size | Cat.,No. |
|------|----------|
| 1/2" | HFXW31   |
| 3/4" | HFXW32   |



## Hot Dip Galvanized Device Boxes Single Gang

ເອຟ.ເອສ.ດີໄວ໊ບັອກຊ໌ອາບສັງກະສີ ຈິງເກິ້ລ ແກ້ງຄ໌

Material : Cast Iron



| Size | F.S.<br>Cat.,No. | F.S.C.<br>Cat.,No. | F.S.S.<br>Cat.,No. | F.S.C.C.<br>Cat.,No. | F.S.W.<br>Cat.,No. |
|------|------------------|--------------------|--------------------|----------------------|--------------------|
| 1/2" | HDV11            | HDV24              | HDV21              | HDV31                | HDVW11             |
| 3/4" | HDV12            | HDV25              | HDV22              | HDV32                | HDVW12             |

## Hot Dip Galvanized F.S. Boxes 116x120 mm.

ເອຟ.ເອສ.ບັອກຊ໌ ອາບສັງກະສີ 116x120 mm.

Material : Cast Iron



| Size | F.S.<br>Cat.,No. | F.S.C<br>Cat.,No. | F.S.S<br>Cat.,No. | F.S.C.C<br>Cat.,No. |
|------|------------------|-------------------|-------------------|---------------------|
| 1/2" | HFXW41           | HFXW54            | HFXW51            | HFXW61              |
| 3/4" | HFXW42           | HFXW55            | HFXW52            | HFXW62              |
| 1"   | HFXW43           | HFXW56            | HFXW53            | HFXW63              |

## Hot Dip Galvanized F.S. Boxes 76x116 mm. Cover

ເອຟ.ເອສ.ບັອກຊ໌ ອາບສັງກະສີ 76x116 mm.



Material : Cast Iron

Cat.,No.

HFYW31

## Hot Dip Galvanized F.S. Boxes 116x120 mm. Cover

ເອຟ.ເອສ.ບັອກຊ໌ ອາບສັງກະສີ 116x120 mm.



Material : Cast Iron

Cat.,No.

HFYW51

## Hot Dip Galvanized Circular Boxes

เซอร์คิวเลอรีบ็อกซ์ออบสังกะสี

Material : Cast Iron



| Size   | 1 ทง<br>Cat.,No. | 2 ทง<br>Cat.,No. | 2 ทงฉาก<br>Cat.,No. | 3 ทง<br>Cat.,No. | 4 ทง<br>Cat.,No. |
|--------|------------------|------------------|---------------------|------------------|------------------|
| 1/2"   | HICB11           | HICB21           | HICB71              | HICB31           | HICB41           |
| 3/4"   | HICB12           | HICB22           | HICB72              | HICB32           | HICB42           |
| 1"     | HICB13           | HICB23           | HICB73              | HICB33           | HICB43           |
| 1-1/4" |                  | HICB24           | HICB74              | HICB34           | HICB44           |
| 1-1/2" |                  | HICB25           | HICB75              | HICB35           | HICB45           |
| 2"     |                  | HICB26           | HICB76              | HICB36           | HICB46           |

## Hot Dip Galvanized Circular Flat Covers

ฝาปิดเซอร์คิวเลอรีบ็อกซ์ออบสังกะสี



Material : Cast Iron

| Type             | Cat.,No. |
|------------------|----------|
| 1/2" , 3/4" , 1" | HICB01   |
| 1-1/4" , 1-1/2"  | HICB04   |
| 2"               | HICB06   |

## Hot Dip Galvanized Circular Hub Plate Covers

ฝาปิดฮับเพลทออบสังกะสี



Material : Cast Iron

| Type | Cat.,No. |
|------|----------|
| 1/2" | HICB-T01 |
| 3/4" | HICB-T02 |

## Hot Dip Galvanized Drain-Plug



Material : Cast Iron

| Size   | Cat.,No.   |
|--------|------------|
| 1/2"   | H-DRPLUG21 |
| 3/4"   | H-DRPLUG22 |
| 1"     | H-DRPLUG23 |
| 1-1/4" | H-DRPLUG24 |
| 1-1/2" | H-DRPLUG25 |
| 2"     | H-DRPLUG26 |
| 2-1/2" | H-DRPLUG27 |
| 3"     | H-DRPLUG28 |

# Hot Dip Galvanized Conduit Outlet Boxes

คอนดุก เอ้าท์เลทบ็อกซ์อาบสังกะสี พร้อมฝา

Material : Cast Iron



**L.B.**

| Size   | Cat.,No. |
|--------|----------|
| 1/2"   | HOB21    |
| 3/4"   | HOB22    |
| 1"     | HOB23    |
| 1-1/4" | HOB24    |
| 1-1/2" | HOB25    |
| 2"     | HOB26    |
| 2-1/2" | HOB27    |
| 3"     | HOB28    |
| 3-1/2" | HOB29    |
| 4"     | HOB30    |
| 5"     | HOB31    |
| 6"     | HOB32    |



**L.L.**

| Size   | Cat.,No. |
|--------|----------|
| 1/2"   | HOL21    |
| 3/4"   | HOL22    |
| 1"     | HOL23    |
| 1-1/4" | HOL24    |
| 1-1/2" | HOL25    |
| 2"     | HOL26    |
| 2-1/2" | HOL27    |
| 3"     | HOL28    |
| 3-1/2" | HOL29    |
| 4"     | HOL30    |
| 5"     | HOL31    |
| 6"     | HOL32    |



**L.R.**

| Size   | Cat.,No. |
|--------|----------|
| 1/2"   | HOR21    |
| 3/4"   | HOR22    |
| 1"     | HOR23    |
| 1-1/4" | HOR24    |
| 1-1/2" | HOR25    |
| 2"     | HOR26    |
| 2-1/2" | HOR27    |
| 3"     | HOR28    |
| 3-1/2" | HOR29    |
| 4"     | HOR30    |
| 5"     | HOR31    |
| 6"     | HOR32    |



**O.C.**

| Size   | Cat.,No. |
|--------|----------|
| 1/2"   | HOC21    |
| 3/4"   | HOC22    |
| 1"     | HOC23    |
| 1-1/4" | HOC24    |
| 1-1/2" | HOC25    |
| 2"     | HOC26    |
| 2-1/2" | HOC27    |
| 3"     | HOC28    |
| 3-1/2" | HOC29    |
| 4"     | HOC30    |
| 5"     | HOC31    |
| 6"     | HOC32    |



**O.T.**

| Size   | Cat.,No. |
|--------|----------|
| 1/2"   | HOT21    |
| 3/4"   | HOT22    |
| 1"     | HOT23    |
| 1-1/4" | HOT24    |
| 1-1/2" | HOT25    |
| 2"     | HOT26    |
| 2-1/2" | HOT27    |
| 3"     | HOT28    |
| 3-1/2" | HOT29    |
| 4"     | HOT30    |
| 5"     | HOT31    |
| 6"     | HOT32    |



**T.B.**

| Size   | Cat.,No. |
|--------|----------|
| 1/2"   | HOTB21   |
| 3/4"   | HOTB22   |
| 1"     | HOTB23   |
| 1-1/4" | HOTB24   |
| 1-1/2" | HOTB25   |
| 2"     | HOTB26   |
| 2-1/2" | HOTB27   |
| 3"     | HOTB28   |



# Hot Dip Galvanized Junction Boxes With Covers

บ็อกซ์กลมเหล็กหล่ออาบสังกะสี พร้อมฝา

Material : Cast Iron



1 พอร์ต

| Size | Cat.,No. |
|------|----------|
| 1/2" | HIOJ11   |
| 3/4" | HIOJ12   |
| 1"   | HIOJ13   |



2 พอร์ต

| Size   | Cat.,No. |
|--------|----------|
| 1/2"   | HIOJ21   |
| 3/4"   | HIOJ22   |
| 1"     | HIOJ23   |
| 1-1/4" | HIOJ24   |
| 1-1/2" | HIOJ25   |
| 2"     | HIOJ26   |
| 2-1/2" | HIOJ27   |



2 พอร์ตจาก

| Size   | Cat.,No. |
|--------|----------|
| 1/2"   | HIOJ71   |
| 3/4"   | HIOJ72   |
| 1"     | HIOJ73   |
| 1-1/4" | HIOJ74   |
| 1-1/2" | HIOJ75   |
| 2"     | HIOJ76   |
| 2-1/2" | HIOJ77   |



3 พอร์ต

| Size   | Cat.,No. |
|--------|----------|
| 1/2"   | HIOJ31   |
| 3/4"   | HIOJ32   |
| 1"     | HIOJ33   |
| 1-1/4" | HIOJ34   |
| 1-1/2" | HIOJ35   |
| 2"     | HIOJ36   |
| 2-1/2" | HIOJ37   |



4 พอร์ต

| Size   | Cat.,No. |
|--------|----------|
| 1/2"   | HIOJ41   |
| 3/4"   | HIOJ42   |
| 1"     | HIOJ43   |
| 1-1/4" | HIOJ44   |
| 1-1/2" | HIOJ45   |
| 2"     | HIOJ46   |
| 2-1/2" | HIOJ47   |

## Hot Dip Galvanized Edge Conduit Reducers

เกลียวลดขอบเหลี่ยมออบสังกะสี



Material : Cast Iron

| Male Reduce to Female |    |        | Cat.,No. |
|-----------------------|----|--------|----------|
| 3/4"                  | TO | 1/2"   | HRN21    |
| 1"                    | TO | 1/2"   | HRN31    |
| 1"                    | TO | 3/4"   | HRN32    |
| 1-1/4"                | TO | 1/2"   | HRN41    |
| 1-1/4"                | TO | 3/4"   | HRN42    |
| 1-1/4"                | TO | 1"     | HRN43    |
| 1-1/2"                | TO | 1/2"   | HRN51    |
| 1-1/2"                | TO | 3/4"   | HRN52    |
| 1-1/2"                | TO | 1"     | HRN53    |
| 1-1/2"                | TO | 1-1/4" | HRN54    |
| 2"                    | TO | 1/2"   | HRN61    |
| 2"                    | TO | 3/4"   | HRN62    |
| 2"                    | TO | 1"     | HRN63    |
| 2"                    | TO | 1-1/4" | HRN64    |
| 2"                    | TO | 1-1/2" | HRN65    |

## Hot Dip Galvanized Conduit Enlargers

เกลียวเพิ่มออบสังกะสี



Material : Cast Iron

| Male Reduce to Female |    |        | Cat.,No. |
|-----------------------|----|--------|----------|
| 2-1/2"                | TO | 1"     | HRN73    |
| 2-1/2"                | TO | 1-1/4" | HRN74    |
| 2-1/2"                | TO | 1-1/2" | HRN75    |
| 2-1/2"                | TO | 2"     | HRN76    |
| 3"                    | TO | 3/4"   | HRN82    |
| 3"                    | TO | 1"     | HRN83    |
| 3"                    | TO | 1-1/4" | HRN84    |
| 3"                    | TO | 1-1/2" | HRN85    |
| 3"                    | TO | 2"     | HRN86    |
| 3"                    | TO | 2-1/2" | HRN87    |
| 3-1/2"                | TO | 2"     | HRN96    |
| 3-1/2"                | TO | 3"     | HRN98    |
| 4"                    | TO | 1"     | HRNA3    |
| 4"                    | TO | 1-1/4" | HRNA4    |
| 4"                    | TO | 1-1/2" | HRNA5    |
| 4"                    | TO | 2"     | HRNA6    |
| 4"                    | TO | 2-1/2" | HRNA7    |
| 4"                    | TO | 3"     | HRNA8    |
| 4"                    | TO | 3-1/2" | HRNA9    |
| 5"                    | TO | 4"     | HRNBA    |
| 6"                    | TO | 4"     | HRNCA    |
| 6"                    | TO | 5"     | HRNCB    |

| Male enlarge to Female |    |        | Cat.,No. |
|------------------------|----|--------|----------|
| 1/2"                   | TO | 3/4"   | HCE12    |
| 1/2"                   | TO | 1"     | HCE13    |
| 1/2"                   | TO | 1-1/4" | HCE14    |
| 1/2"                   | TO | 1-1/2" | HCE15    |
| 3/4"                   | TO | 1"     | HCE23    |
| 3/4"                   | TO | 1-1/4" | HCE24    |
| 3/4"                   | TO | 1-1/2" | HCE25    |
| 3/4"                   | TO | 2"     | HCE26    |
| 1"                     | TO | 1-1/4" | HCE34    |
| 1"                     | TO | 1-1/2" | HCE35    |
| 1"                     | TO | 2"     | HCE36    |
| 1-1/4"                 | TO | 1-1/2" | HCE45    |
| 1-1/4"                 | TO | 2"     | HCE46    |
| 1-1/2"                 | TO | 2"     | HCE56    |
| 2"                     | TO | 2-1/2" | HCE67    |
| 2"                     | TO | 3"     | HCE68    |
| 2-1/2"                 | TO | 3"     | HCE78    |
| 3"                     | TO | 3-1/2" | HCE89    |
| 2-1/2"                 | TO | 4"     | HCE7A    |
| 3"                     | TO | 4"     | HCE8A    |
| 3-1/2"                 | TO | 4"     | HCE9A    |

## Hot Dip Galvanized Close-Up Plugs

ลูกอุดเกลียวออบสังกะสี



Material : Cast Iron

| Size   | Cat.,No. |
|--------|----------|
| 1/2"   | HCU-SQ21 |
| 3/4"   | HCU-SQ22 |
| 1"     | HCU-SQ23 |
| 1-1/4" | HCU-SQ24 |
| 1-1/2" | HCU-SQ25 |
| 2"     | HCU-SQ26 |
| 2-1/2" | HCU-SQ27 |
| 3"     | HCU-SQ28 |

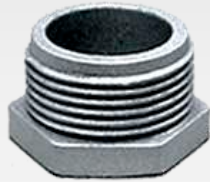


Material : Cast Iron

| Size   | Cat.,No. |
|--------|----------|
| 1/2"   | HCU21    |
| 3/4"   | HCU22    |
| 1"     | HCU23    |
| 1-1/4" | HCU24    |
| 1-1/2" | HCU25    |
| 2"     | HCU26    |
| 2-1/2" | HCU27    |
| 3"     | HCU28    |
| 3-1/2" | HCU29    |
| 4"     | HCU30    |
| 5"     | HCU31    |
| 6"     | HCU32    |

## Hot Dip Galvanized Chase Nipples

เชสนิปเป็ลอบสังกะสี



Material : Cast Iron

| Size   | Cat.,No. |
|--------|----------|
| 1/2"   | HHN21    |
| 3/4"   | HHN22    |
| 1"     | HHN23    |
| 1-1/4" | HHN24    |
| 1-1/2" | HHN25    |
| 2"     | HHN26    |
| 2-1/2" | HHN27    |
| 3"     | HHN28    |
| 3-1/2" | HHN29    |
| 4"     | HHN30    |

## Hot Dip Galvanized Rain Tight Hub Connectors

ฮับคอนเนคเตอร์อบสังกะสี



Material : Cast Iron

| Size   | Cat.,No. |
|--------|----------|
| 1/2"   | HHC21    |
| 3/4"   | HHC22    |
| 1"     | HHC23    |
| 1-1/4" | HHC24    |
| 1-1/2" | HHC25    |
| 2"     | HHC26    |
| 2-1/2" | HHC27    |
| 3"     | HHC28    |
| 3-1/2" | HHC29    |
| 4"     | HHC30    |

## Hot Dip Galvanized Square Hub Plates

ฮับเพลทเหล็กหล่ออบสังกะสี



Material : Cast Iron

| Size   | Cat.,No. |
|--------|----------|
| 1/2"   | HHP21    |
| 3/4"   | HHP22    |
| 1"     | HHP23    |
| 1-1/4" | HHP24    |
| 1-1/2" | HHP25    |
| 2"     | HHP26    |
| 2-1/2" | HHP27    |

## Hot Dip Galvanized Conduit Clamps

แคลมป์ประกับบางอบสังกะสี



| Size   | Cat.,No. |
|--------|----------|
| 1/2"   | HCC11    |
| 3/4"   | HCC12    |
| 1"     | HCC13    |
| 1-1/4" | HCC14    |
| 1-1/2" | HCC15    |
| 2"     | HCC16    |

## Hot Dip Galvanized C-Channels

รางซีอาบสังกะสี



Thickness 1.6 mm.

| Type | Size              | Cat.,No. |
|------|-------------------|----------|
| ตั้  | 25x40<br>x1200mm. | HCC00    |
|      | 25x40<br>x2400mm. | HCC01    |

Thickness 1.6 mm.

| Type | Size              | Cat.,No. |
|------|-------------------|----------|
| ลึ้ก | 40x40<br>x1200mm. | HCC03    |
|      | 40x40<br>x2400mm. | HCC04    |

Thickness 2.5 mm.

| Size                  | Cat.,No. |
|-----------------------|----------|
| 41.2x41.2<br>x3000mm. | HCC205   |

\*รับผลิตขนาดอื่น ตามความยาวและความหนาที่ต้องการ : Custom made for other sizes\*

## Hot Dip Galvanized Beam Clamps

พินจระเข้อาบสังกะสี



Type 1  
for Beam 14 mm.

| Cat.,No. |
|----------|
| HBC01    |



Type 1w  
for Beam 20 mm.

| Cat.,No. |
|----------|
| HBC01W   |



Type 2w  
for Beam 30 mm.

| Cat.,No. |
|----------|
| HBC02W   |



Type 3w  
for Beam 43 mm.

| Cat.,No. |
|----------|
| HBC03W   |



Type UB  
for Beam 25 mm.

| Cat.,No. |
|----------|
| HBC9     |

## Hot Dip Galvanized Conduit Clamps

แคลมป์ประกับหนาอาบสังกะสี



| Size   | Cat.,No. |
|--------|----------|
| 1/2"   | HCC21    |
| 3/4"   | HCC22    |
| 1"     | HCC23    |
| 1-1/4" | HCC24    |
| 1-1/2" | HCC25    |
| 2"     | HCC26    |

| Size   | Cat.,No. |
|--------|----------|
| 2-1/2" | HCC27    |
| 3"     | HCC28    |
| 3-1/2" | HCC29    |
| 4"     | HCC30    |
| 5"     | HCC31    |
| 6"     | HCC32    |

## Hot Dip Galvanized Applicable Hangers

แคล้มวงเดือนบอาบสังกะสี



| Size   | Cat.,No. |
|--------|----------|
| 1/2"   | HBC21    |
| 3/4"   | HBC22    |
| 1"     | HBC23    |
| 1-1/4" | HBC24    |
| 1-1/2" | HBC25    |

| Size   | Cat.,No. |
|--------|----------|
| 2"     | HBC26    |
| 2-1/2" | HBC27    |
| 3"     | HBC28    |
| 3-1/2" | HBC29    |
| 4"     | HBC30    |

## Hot Dip Galvanized E.M.T. Straps

แคล้มบางอาบสังกะสี



Material : Mild Steel

| Size     | Cat.,No. |
|----------|----------|
| 1/2"     | H-STR11  |
| 3/4"     | H-STR12  |
| 1"       | H-STR13  |
| 1 - 1/4" | H-STR14  |
| 1 - 1/2" | H-STR15  |
| 2"       | H-STR16  |

## Hot Dip Galvanized I.M.C. Straps

แคล้มหนาอาบสังกะสี



Material : Mild Steel

| Size     | Cat.,No. |
|----------|----------|
| 1/2"     | H-STR21  |
| 3/4"     | H-STR22  |
| 1"       | H-STR23  |
| 1 - 1/4" | H-STR24  |
| 1 - 1/2" | H-STR25  |
| 2"       | H-STR26  |
| 2 - 1/2" | H-STR27  |
| 3"       | H-STR28  |
| 3 - 1/2" | H-STR29  |
| 4"       | H-STR30  |

## Hot Dip Galvanized Erickson Couplings

อีริกสัน คูปลิ่งอาบสังกะสี (ยูเนียน)

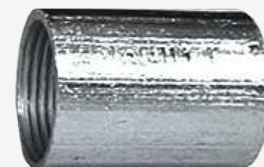


Material : Cast Iron

| Size   | Cat.,No. |
|--------|----------|
| 1/2"   | HERS21   |
| 3/4"   | HERS22   |
| 1"     | HERS23   |
| 1-1/4" | HERS24   |
| 1-1/2" | HERS25   |
| 2"     | HERS26   |
| 2-1/2" | HERS27   |
| 3"     | HERS28   |
| 3-1/2" | HERS29   |
| 4"     | HERS30   |
| 5"     | HERS31   |
| 6"     | HERS32   |

## Hot Dip Galvanized I.M.C. Couplings

ข้อต่อหนาอาบสังกะสี



| Size   | Cat.,No. |
|--------|----------|
| 1/2"   | HIP21    |
| 3/4"   | HIP22    |
| 1"     | HIP23    |
| 1-1/4" | HIP24    |
| 1-1/2" | HIP25    |
| 2"     | HIP26    |
| 2-1/2" | HIP27    |
| 3"     | HIP28    |
| 3-1/2" | HIP29    |
| 4"     | HIP30    |
| 5"     | HIP31    |
| 6"     | HIP32    |



## Hot Dip Galvanized Mild Steel Bushings

บุชซึ่งมายด์สตีลอบสังกะสี



| Size   | Cat.,No. |
|--------|----------|
| 1/2"   | HBH21    |
| 3/4"   | HBH22    |
| 1"     | HBH23    |
| 1-1/4" | HBH24    |
| 1-1/2" | HBH25    |
| 2"     | HBH26    |
| 2-1/2" | HBH27    |
| 3"     | HBH28    |
| 3-1/2" | HBH29    |
| 4"     | HBH30    |

## Hot Dip Galvanized Clamps

แคล้มอบสังกะสี



Material : Cast Iron

| Size   | Cat.,No. |
|--------|----------|
| 1/2"   | HCL21    |
| 3/4"   | HCL22    |
| 1"     | HCL23    |
| 1-1/4" | HCL24    |
| 1-1/2" | HCL25    |
| 2"     | HCL26    |
| 2-1/2" | HCL27    |
| 3"     | HCL28    |
| 4"     | HCL30    |

## Hot Dip Galvanized Mild Steel Locknuts

ลอคนัทอบสังกะสี



| Size   | Cat.,No. |
|--------|----------|
| 1/2"   | HLN21    |
| 3/4"   | HLN22    |
| 1"     | HLN23    |
| 1-1/4" | HLN24    |
| 1-1/2" | HLN25    |
| 2"     | HLN26    |
| 2-1/2" | HLN27    |
| 3"     | HLN28    |
| 3-1/2" | HLN29    |
| 4"     | HLN30    |

## Hot Dip Galvanized Back Clamps

แบ็คแคล้มอบสังกะสี



Material : Cast Iron

| Size   | Cat.,No. |
|--------|----------|
| 1/2"   | HCLB21   |
| 3/4"   | HCLB22   |
| 1"     | HCLB23   |
| 1-1/4" | HCLB24   |
| 1-1/2" | HCLB25   |
| 2"     | HCLB26   |
| 2-1/2" | HCLB27   |
| 3"     | HCLB28   |
| 4"     | HCLB30   |

## Hot Dip Galvanized Pull Boxes

พลูบ็อกซ์เหล็กอาบสังกะสี



Thickness 2.0 mm.

| Size             | Cat.,No.     |
|------------------|--------------|
| 10 x 10 x 10 cm. | HPBT2-101010 |
| 15 x 15 x 10 cm. | HPBT2-151510 |
| 15 x 15 x 15 cm. | HPBT2-151515 |
| 20 x 20 x 10 cm. | HPBT2-202010 |
| 20 x 20 x 15 cm. | HPBT2-202015 |
| 20 x 20 x 20 cm. | HPBT2-202020 |
| 25 x 25 x 10 cm. | HPBT2-252510 |
| 25 x 25 x 15 cm. | HPBT2-252515 |
| 30 x 30 x 15 cm. | HPBT2-303015 |

## Hot Dip Galvanized Liquid Tight Flexible Connector

คอนเนคเตอร์เหล็กหล่อจับท่ออ่อนกันน้ำอาบสังกะสี



Material : Cast Iron

| Size     | Cat.,No. |
|----------|----------|
| 1/2"     | H-RFN21  |
| 3/4"     | H-RFN22  |
| 1"       | H-RFN23  |
| 1 - 1/4" | H-RFN24  |
| 1 - 1/2" | H-RFN25  |
| 2"       | H-RFN26  |
| 2 - 1/2" | H-RFN27  |
| 3"       | H-RFN28  |
| 4"       | H-RFN30  |

## Hot Dip Galvanized Pull Boxes

พลูบ็อกซ์เหล็กอาบสังกะสี



Thickness 2.3 mm. , 2.5 mm. , 3.0 mm.

| Size             | Cat.,No.  |
|------------------|-----------|
| 10 x 10 x 10 cm. | HPB101010 |
| 15 x 15 x 10 cm. | HPB151510 |
| 15 x 15 x 15 cm. | HPB151515 |
| 20 x 20 x 10 cm. | HPB202010 |
| 20 x 20 x 15 cm. | HPB202015 |
| 20 x 20 x 20 cm. | HPB202020 |
| 25 x 25 x 10 cm. | HPB252510 |
| 25 x 25 x 15 cm. | HPB252515 |
| 25 x 25 x 20 cm. | HPB252520 |
| 25 x 25 x 25 cm. | HPB252525 |
| 30 x 30 x 15 cm. | HPB303015 |
| 30 x 30 x 20 cm. | HPB303020 |
| 30 x 30 x 25 cm. | HPB303025 |
| 30 x 30 x 30 cm. | HPB303030 |
| 40 x 40 x 15 cm. | HPB404015 |
| 40 x 40 x 20 cm. | HPB404020 |
| 40 x 40 x 25 cm. | HPB404025 |
| 40 x 40 x 30 cm. | HPB404030 |
| 40 x 40 x 40 cm. | HPB404040 |
| 50 x 50 x 20 cm. | HPB505020 |
| 50 x 50 x 25 cm. | HPB505025 |
| 50 x 50 x 30 cm. | HPB505030 |
| 50 x 50 x 40 cm. | HPB505040 |
| 50 x 50 x 50 cm. | HPB505050 |
| 60 x 60 x 20 cm. | HPB606020 |
| 60 x 60 x 30 cm. | HPB606030 |
| 60 x 60 x 40 cm. | HPB606040 |
| 60 x 60 x 50 cm. | HPB606050 |
| 60 x 60 x 60 cm. | HPB606060 |

Thickness 2.3 mm.

Thickness 2.5 mm.

Thickness 3.0 mm.

\*รับผลิตขนาดอื่น ตามต้องการ : Custom made for other sizes\*

## Hot Dip Galvanized Rain Tight E.M.T. Connector

คอนฯบาง กัมน้ำมยดตลอบสังกะสี



Material : Mild Steel

| Size   | Cat.,No. |
|--------|----------|
| 1/2"   | H-MRCN11 |
| 3/4"   | H-MRCN12 |
| 1"     | H-MRCN13 |
| 1-1/4" | H-MRCN14 |
| 1-1/2" | H-MRCN15 |
| 2"     | H-MRCN16 |

## Hot Dip Galvanized Rain Tight E.M.T. Coupling

ข้อต่อบาง กัมน้ำมยดตลอบสังกะสี



Material : Mild Steel

| Size   | Cat.,No. |
|--------|----------|
| 1/2"   | H-MRCP11 |
| 3/4"   | H-MRCP12 |
| 1"     | H-MRCP13 |
| 1-1/4" | H-MRCP14 |
| 1-1/2" | H-MRCP15 |
| 2"     | H-MRCP16 |

## Hot Dip Galvanized E.M.T. Connector Mild Steel

คอนฯบาง มยดตลอบสังกะสี



H-MEN11 ~ 13

H-MEN14 ~ 16

| Size   | Cat.,No. |
|--------|----------|
| 1/2"   | H-MEN11  |
| 3/4"   | H-MEN12  |
| 1"     | H-MEN13  |
| 1-1/4" | H-MEN14  |
| 1-1/2" | H-MEN15  |
| 2"     | H-MEN16  |

## Hot Dip Galvanized E.M.T. Coupling Mild Steel

ข้อต่อบาง มยดตลอบสังกะสี



H-MEP11 ~ 13

H-MEP14 ~ 16

| Size   | Cat.,No. |
|--------|----------|
| 1/2"   | H-MEP11  |
| 3/4"   | H-MEP12  |
| 1"     | H-MEP13  |
| 1-1/4" | H-MEP14  |
| 1-1/2" | H-MEP15  |
| 2"     | H-MEP16  |

## Hot Dip Galvanized Edge Conduit Enlargers

เกลียวเพิ่มขอบเหลี่ยมอบสังกะสี



Material : Cast Iron

| Male enlarge to Female |    |        | Cat.,No. |
|------------------------|----|--------|----------|
| 1/2"                   | TO | 3/4"   | HCEEG12  |
| 1/2"                   | TO | 1"     | HCEEG13  |
| 3/4"                   | TO | 1"     | HCEEG23  |
| 3/4"                   | TO | 1-1/4" | HCEEG24  |
| 1"                     | TO | 1-1/4" | HCEEG34  |
| 1"                     | TO | 1-1/2" | HCEEG35  |
| 1-1/4"                 | TO | 2"     | HCEEG46  |
| 1-1/2"                 | TO | 2"     | HCEEG56  |

## Hot Dip Galvanized Nipples

ท่อหน้าช่วงสั้นอบสังกะสี



เกลียวหัว-ท้าย

| Size     | Cat.,No. |
|----------|----------|
| 1/2"     | HNPA21   |
| 3/4"     | HNPA22   |
| 1"       | HNPA23   |
| 1 - 1/4" | HNPA24   |
| 1 - 1/2" | HNPA25   |
| 2"       | HNPA26   |
| 2 - 1/2" | HNPA27   |
| 3"       | HNPA28   |
| 3-1/2"   | HNPA29   |
| 4"       | HNPA30   |
| 5"       | HNPA31   |
| 6"       | HNPA32   |

## Hot Dip Galvanized U-Bolts + 2 Nuts

ยูโบลท์ + 2 น็อตอบสังกะสี



| Size     | Cat.,No. | Dia   |
|----------|----------|-------|
| 1/2"     | HUB21    | 3/8"  |
| 3/4"     | HUB22    | 3/8"  |
| 1"       | HUB23    | 5/16" |
| 1 - 1/4" | HUB24    | 5/16" |
| 1 - 1/5" | HUB25    | 5/16" |
| 2"       | HUB26    | 5/16" |
| 2 - 1/2" | HUB27    | 5/16" |
| 3"       | HUB28    | 3/8"  |
| 3-1/2"   | HUB29    | 3/8"  |
| 4"       | HUB30    | 3/8"  |
| 5"       | HUB31    | 3/8"  |
| 6"       | HUB32    | 3/8"  |

# ANSI

American National Standard Institute



## ANSI Bushings

บุชซิ่ง แอนซี (ANSI)



**Material : Cast Iron, P.P.**  
**Finished : Hot Dip Galvanized**

| Size   | Cat.,No. |
|--------|----------|
| 1/2"   | ASBH21   |
| 3/4"   | ASBH22   |
| 1"     | ASBH23   |
| 1-1/4" | ASBH24   |
| 1-1/2" | ASBH25   |
| 2"     | ASBH26   |
| 2-1/2" | ASBH27   |
| 3"     | ASBH28   |
| 3-1/2" | ASBH29   |
| 4"     | ASBH30   |
| 5"     | ASBH31   |
| 6"     | ASBH32   |

## ANSI Locknuts

ลอคนัท แอนซี (ANSI)



**Material : Mild Steel (1/2"-2")**  
**Cast Iron (2-1/2"-6")**  
**Finished : Hot Dip Galvanized**

| Size   | Cat.,No. |
|--------|----------|
| 1/2"   | ASLN21   |
| 3/4"   | ASLN22   |
| 1"     | ASLN23   |
| 1-1/4" | ASLN24   |
| 1-1/2" | ASLN25   |
| 2"     | ASLN26   |
| 2-1/2" | ASLN27   |
| 3"     | ASLN28   |
| 3-1/2" | ASLN29   |
| 4"     | ASLN30   |
| 5"     | ASLN31   |
| 6"     | ASLN32   |

## Grounding Bushings

กราวด์ติง บุชซิ่ง



**Material Body : Cast Iron, P.P.**  
**Finished : Hot Dip Galvanized**  
**Screw : Stainless**

| Size   | Cat.,No. |
|--------|----------|
| 1/2"   | HGRBH21  |
| 3/4"   | HGRBH22  |
| 1"     | HGRBH23  |
| 1-1/4" | HGRBH24  |
| 1-1/2" | HGRBH25  |
| 2"     | HGRBH26  |

| Size   | Cat.,No. |
|--------|----------|
| 2-1/2" | HGRBH27  |
| 3"     | HGRBH28  |
| 3-1/2" | HGRBH29  |
| 4"     | HGRBH30  |
| 5"     | HGRBH31  |
| 6"     | HGRBH32  |

# Explosion Proof

## Conduit Fitting & Accessories



## Explosion Proof Unions

ยูเนียนกันระเบิด



Cast Aluminium

| Size | Cat.,No. |
|------|----------|
| 1/2" | XUN21    |
| 3/4" | XUN22    |
| 1"   | XUN23    |

| Size   | Cat.,No. |
|--------|----------|
| 1-1/4" | XUN24    |
| 1-1/2" | XUN25    |
| 2"     | XUN26    |
| 2-1/2" | XUN27    |

## Explosion Proof Flexible Conduits

ท่ออ่อนกันระเบิด



Material : Stainless, Brass, Aluminium

ท่ออ่อนกันระเบิด 1/2"

| Type             | Cat.,No. |
|------------------|----------|
| Ø 1/2" x 30 cm.  | XFD1030  |
| Ø 1/2" x 40 cm.  | XFD1040  |
| Ø 1/2" x 50 cm.  | XFD1050  |
| Ø 1/2" x 60 cm.  | XFD1060  |
| Ø 1/2" x 80 cm.  | XFD1080  |
| Ø 1/2" x 100 cm. | XFD1100  |

ท่ออ่อนกันระเบิด 1"

| Type           | Cat.,No. |
|----------------|----------|
| Ø 1" x 30 cm.  | XFD3030  |
| Ø 1" x 40 cm.  | XFD3040  |
| Ø 1" x 50 cm.  | XFD3050  |
| Ø 1" x 60 cm.  | XFD3060  |
| Ø 1" x 80 cm.  | XFD3080  |
| Ø 1" x 100 cm. | XFD3100  |

ท่ออ่อนกันระเบิด 1-1/2"

| Type               | Cat.,No. |
|--------------------|----------|
| Ø 1-1/2" x 30 cm.  | XFD5030  |
| Ø 1-1/2" x 40 cm.  | XFD5040  |
| Ø 1-1/2" x 50 cm.  | XFD5050  |
| Ø 1-1/2" x 60 cm.  | XFD5060  |
| Ø 1-1/2" x 80 cm.  | XFD5080  |
| Ø 1-1/2" x 100 cm. | XFD5100  |

ท่ออ่อนกันระเบิด 3/4"

| Type             | Cat.,No. |
|------------------|----------|
| Ø 3/4" x 30 cm.  | XFD2030  |
| Ø 3/4" x 40 cm.  | XFD2040  |
| Ø 3/4" x 50 cm.  | XFD2050  |
| Ø 3/4" x 60 cm.  | XFD2060  |
| Ø 3/4" x 80 cm.  | XFD2080  |
| Ø 3/4" x 100 cm. | XFD2100  |

ท่ออ่อนกันระเบิด 1-1/4"

| Type               | Cat.,No. |
|--------------------|----------|
| Ø 1-1/4" x 30 cm.  | XFD4030  |
| Ø 1-1/4" x 40 cm.  | XFD4040  |
| Ø 1-1/4" x 50 cm.  | XFD4050  |
| Ø 1-1/4" x 60 cm.  | XFD4060  |
| Ø 1-1/4" x 80 cm.  | XFD4080  |
| Ø 1-1/4" x 100 cm. | XFD4100  |

ท่ออ่อนกันระเบิด 2"

| Type           | Cat.,No. |
|----------------|----------|
| Ø 2" x 30 cm.  | XFD6030  |
| Ø 2" x 40 cm.  | XFD6040  |
| Ø 2" x 50 cm.  | XFD6050  |
| Ø 2" x 60 cm.  | XFD6060  |
| Ø 2" x 80 cm.  | XFD6080  |
| Ø 2" x 100 cm. | XFD6100  |



# Explosion Proof Conduit Outlet Boxes

คอนดุกเอาท์ที่เลกบ็อกซ์กันระเบิด พร้อมฝา

Material : Cast Aluminium



**L.B.**

| Size   | Cat.,No. |
|--------|----------|
| 1/2"   | XOB21    |
| 3/4"   | XOB22    |
| 1"     | XOB23    |
| 1-1/4" | XOB24    |
| 1-1/2" | XOB25    |
| 2"     | XOB26    |
| 2-1/2" | XOB27    |
| 3"     | XOB28    |



**L.L.**

| Size   | Cat.,No. |
|--------|----------|
| 1/2"   | XOL21    |
| 3/4"   | XOL22    |
| 1"     | XOL23    |
| 1-1/4" | XOL24    |
| 1-1/2" | XOL25    |
| 2"     | XOL26    |
| 2-1/2" | XOL27    |
| 3"     | XOL28    |



**L.R.**

| Size   | Cat.,No. |
|--------|----------|
| 1/2"   | XOR21    |
| 3/4"   | XOR22    |
| 1"     | XOR23    |
| 1-1/4" | XOR24    |
| 1-1/2" | XOR25    |
| 2"     | XOR26    |
| 2-1/2" | XOR27    |
| 3"     | XOR28    |



**O.T.**

| Size   | Cat.,No. |
|--------|----------|
| 1/2"   | XOT21    |
| 3/4"   | XOT22    |
| 1"     | XOT23    |
| 1-1/4" | XOT24    |
| 1-1/2" | XOT25    |
| 2"     | XOT26    |
| 2-1/2" | XOT27    |
| 3"     | XOT28    |



**O.C.**

| Size | Cat.,No. |
|------|----------|
| 1/2" | XOC21    |
| 3/4" | XOC22    |



## Explosion Proof E.Y.K.

อี.วาย.เค กันระเบิด



Female



Male&Female

Material : Cast Iron  
Finished : Hot Dip Galvanized

| Size   | Cat.,No. |
|--------|----------|
| 1/2"   | XEYK21   |
| 3/4"   | XEYK22   |
| 1"     | XEYK23   |
| 1-1/4" | XEYK24   |
| 1-1/2" | XEYK25   |
| 2"     | XEYK26   |
| 2-1/2" | XEYK27   |
| 3"     | XEYK28   |
| 3-1/2" | XEYK29   |
| 4"     | XEYK30   |

| Size   | Cat.,No. |
|--------|----------|
| 1/2"   | XEYKM21  |
| 3/4"   | XEYKM22  |
| 1"     | XEYKM23  |
| 1-1/4" | XEYKM24  |
| 1-1/2" | XEYKM25  |
| 2"     | XEYKM26  |
| 2-1/2" | XEYKM27  |
| 3"     | XEYKM28  |
| 3-1/2" | XEYKM29  |
| 4"     | XEYKM30  |

## Explosion Proof E.Y.S.

อี.วาย.เอส กันระเบิด

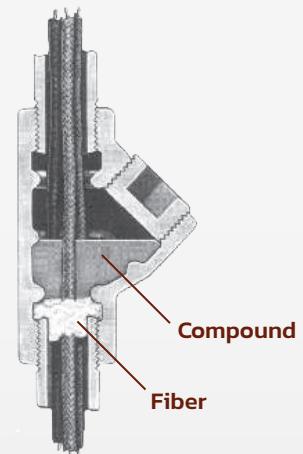


Material : Cast Aluminium

| Size   | Cat.,No. |
|--------|----------|
| 1/2"   | EYS21    |
| 3/4"   | EYS22    |
| 1"     | EYS23    |
| 1-1/4" | EYS24    |
| 1-1/2" | EYS25    |
| 2"     | EYS26    |
| 2-1/2" | EYS27    |
| 3"     | EYS28    |
| 3-1/2" | EYS29    |
| 4"     | EYS30    |

## Sealing Compound & Fiber

ซิลลิ่งคอมปาวด์ และ ไฟเบอร์



Sealing Compound 1 lb.

| Cat.,No. |
|----------|
| EYS00    |

Fiber 20 Grams.

| Cat.,No. |
|----------|
| FIBER    |

# Explosion Proof Junction Boxes

บ็อกซ์กลมกันระเบิด พร้อมฝา

Material : Cast Aluminium



1 พอร์ต

| Size   | Cat.No. |
|--------|---------|
| 1/2"   | XOJ11   |
| 3/4"   | XOJ12   |
| 1"     | XOJ13   |
| 1-1/4" | XOJ14   |
| 1-1/2" | XOJ15   |
| 2"     | XOJ16   |



2 พอร์ต

| Size   | Cat.No. |
|--------|---------|
| 1/2"   | XOJ21   |
| 3/4"   | XOJ22   |
| 1"     | XOJ23   |
| 1-1/4" | XOJ24   |
| 1-1/2" | XOJ25   |
| 2"     | XOJ26   |



2 พอร์ต อก

| Size   | Cat.No. |
|--------|---------|
| 1/2"   | XOJ71   |
| 3/4"   | XOJ72   |
| 1"     | XOJ73   |
| 1-1/4" | XOJ74   |
| 1-1/2" | XOJ75   |
| 2"     | XOJ76   |



3 พอร์ต

| Size   | Cat.No. |
|--------|---------|
| 1/2"   | XOJ31   |
| 3/4"   | XOJ32   |
| 1"     | XOJ33   |
| 1-1/4" | XOJ34   |
| 1-1/2" | XOJ35   |
| 2"     | XOJ36   |



4 พอร์ต

| Size   | Cat.No. |
|--------|---------|
| 1/2"   | XOJ41   |
| 3/4"   | XOJ42   |
| 1"     | XOJ43   |
| 1-1/4" | XOJ44   |
| 1-1/2" | XOJ45   |
| 2"     | XOJ46   |



## Explosion Proof Aluminium Boxes

กล่องอลูมิเนียมกันระเบิด



Index Protection 687

Material : Cast Aluminium

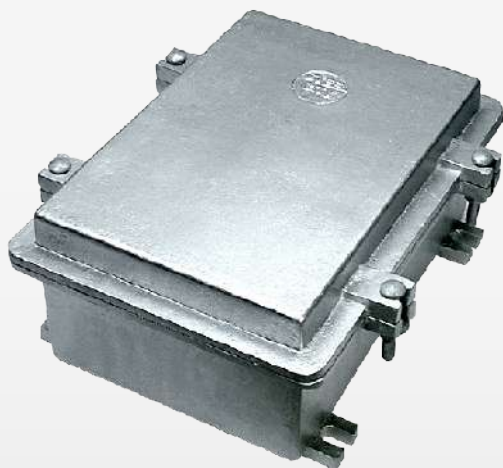
Screw : Stainless M8X50

Seal : Sponge Synthetic Rubber

| Size           | Cat.,No.  |
|----------------|-----------|
| 8" X 8" X 4"   | XPB080804 |
| 10" X 12" X 6" | XPB101206 |
| 15" X 20" X 6" | XPB152006 |
| 20" X 40 X 14" | XPB204014 |

## Explosion Proof Aluminium Box Type PBR

กล่องอลูมิเนียมกันระเบิด Type PBR



Index Protection 687

Material : Cast Aluminium

Mounted Plate Include

| Size           | Cat.,No.    |
|----------------|-------------|
| 10" x 14" x 5" | XPB-R101405 |

\* ขนาดอื่นๆผลิตได้ตามสั่ง \*

\* Make To Order \*

# “CONTACT US”



[sales@steelcitythailand.com](mailto:sales@steelcitythailand.com)



(+66) 2 138 5545 (Auto 5 lines)

Fax : (+66) 2 138 5550, (+66) 2 138 5551



@SteelCity



Steel City Thailand



[www.steelcitythailand.com](http://www.steelcitythailand.com)

บริษัท ดี.อาร์.อินดัสเตรียล จำกัด 971 ถ.ศรีนครินทร์  
แขวงอ่อนนุช เขตสวนหลวง กรุงเทพฯ 10250

D.R. INDUSTRIAL Co.,Ltd. 971 Sri Nakarin Rd.,  
On Nut, Suan Luang, Bangkok, 10250



# STEEL CITY

SAFETY IS OUR PRIORITY



**STEEL CITY**

[www.steelcitythailand.com](http://www.steelcitythailand.com)