



### IMPORTANT NOTICE

The Point Wind Cone (PWC) must be mounted on a solid foundation. The wind cone shall never be mounted on or through a membrane type roof. Relocate the wind cone to a location that has a solid foundation.

Thread the Upper Support Assembly into the top of the threaded adapter and/or lower pole. Use a large pipe wrench to tighten securely. Do not over tighten as you may damage the threads. Use of the pipe wrench will mar the finish of the assembly. If the pole is factory painted, there is a small can of touch up paint enclosed. Place a bead of clear flexible silicone sealant around the point where the Upper Support Assembly enters the top of the threaded adapter and/or lower pole. This will prevent water collection inside the lower pole.

#### IMPORTANT NOTICE

The installer assumes full responsibility for the proper application and safe installation of this unit in accordance with these instructions, the National Electric Code, and all other state and local codes and practices. POINT LIGHTING accepts no responsibility for damages to property nor injury to personnel for the improper use of this product nor its failure under any circumstances. POINT LIGHTING's warranty is limited to the replacement of the defective unit only if the failure is the result of a manufacturing defect. Contact Point Lighting for Warranty Information.

## POINT LIGHTING CORPORATION

Mail: P.O. Box 686, Simsbury, CT 06070      Plant: West Dudley Town Rd, Bloomfield, CT  
Tel 01 860.243.0600      USA      Fax 01 860.243.0665  
email: Info@PointLighting.com      website: www.PointLighting.com



## INSTRUCTION MANUAL PWC LIGHTED WIND CONE FAA L-806 SIZE 1

A wind cone is used to visually indicate wind direction at airports and heliports. Point Lighting wind cones are installed at airports, hospitals, corporate headquarters and military bases around the world.

### CATALOG NUMBERING SYSTEM

FAA TYPE	SIZE	LIGHTING	POWER	WINDSOCK	OPTIONS
PWC- 806: Frangible	1: 8-ft sock, Size 1	L: lighted Style I	-1: 120V -2: 230V	-ON: Orange Nylon -RW: Red/White	-FF: Floor Flange -D: LED Obstruction Light -L: LED Flood Lights -G: Rigid Coupling -SM: Stand Mount

Size 1: 8-ft sock has 18-inch diameter frame

### PRODUCT DATA

#### Input Voltage and Power

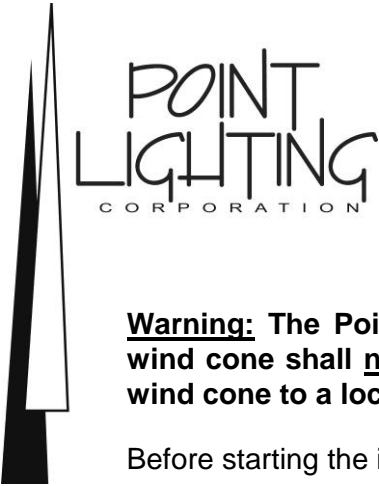
120 VAC nominal 50/60 Hz (108 – 132V)  
Incandescent: 596 W  
LED: 106 W, 106 VA

230 VAC nominal 50/60 Hz (207 – 253V)  
Incandescent: 596 W  
LED: 74 W, 76 VA

Drawings Attached	
800192	Windsock Basket Assembly
800866	Wind Cone Assembly L-806
800141	Lighting Assembly Halogen
800867	Lighting Assembly LED (-D, -L options)
801471	Mounting Option -FF Floor Flange
801405	Mounting Option -SM Stand

## POINT LIGHTING CORPORATION

Mail: P.O. Box 686, Simsbury, CT 06070      Plant: West Dudley Town Rd, Bloomfield, CT  
 Tel 01 860.243.0600      USA      Fax 01 860.243.0665  
 email: [Info@PointLighting.com](mailto:Info@PointLighting.com)      website: [www.PointLighting.com](http://www.PointLighting.com)



### INSTALLATION - FOUNDATION

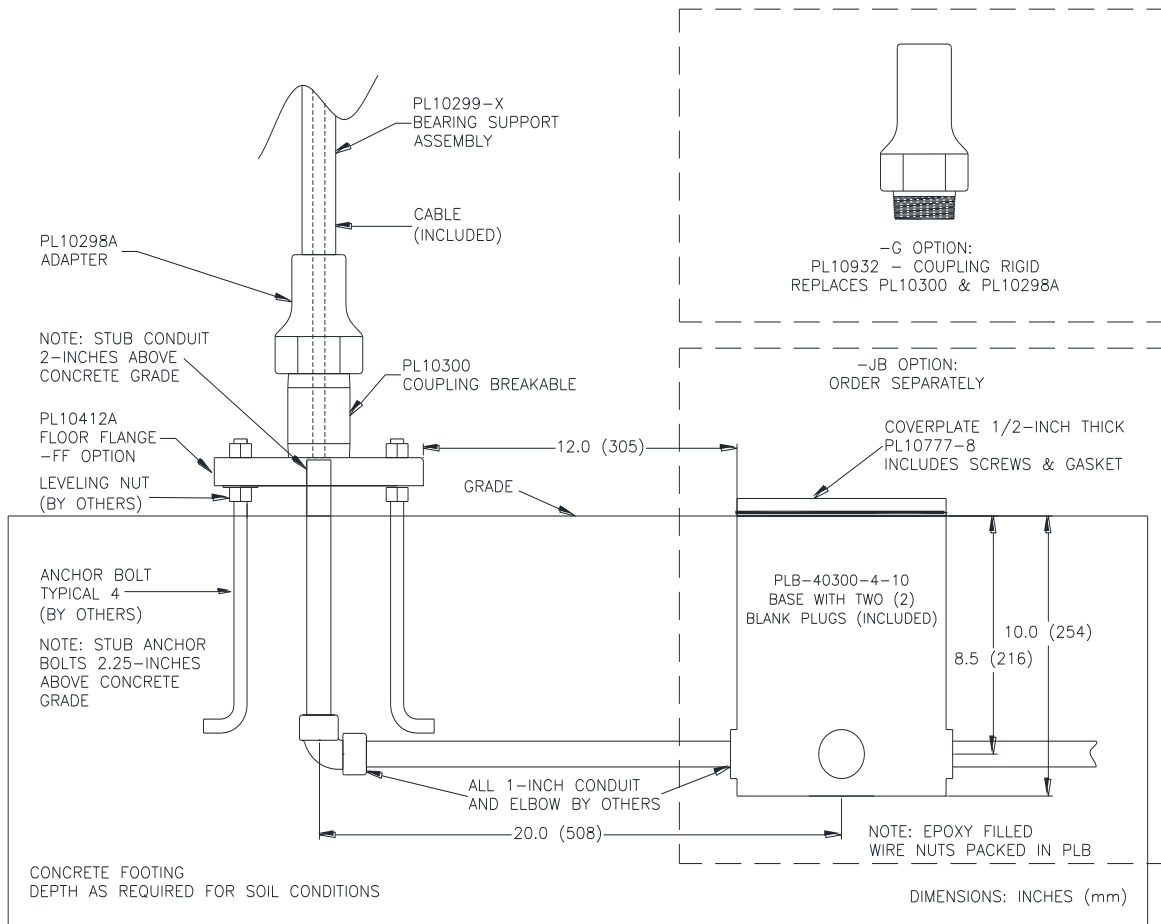
**Warning:** The Point Wind Cone (PWC) must be mounted on a solid foundation. The wind cone shall never be mounted on or through a membrane type roof. Relocate the wind cone to a location that has a solid foundation.

Before starting the installation process, please review all drawings provided.

The PWC wind cone must be installed on a level concrete foundation suitable for the local soil conditions. The wiring must enter from beneath the floor flange. Four (4) 1/2 inch anchor bolts (not supplied) must be installed using the floor flange as a template. The anchor bolts must be plumb vertically and secured threaded end up and above ground during the concrete pour so they cannot move. See Floor Flange drawing **801471**, and wind cone assembly drawing **800866**. Also refer to **Installation Detail 1** below.

Allow the concrete to cure at least 48 hours before completing the installation.

#### INSTALLATION DETAIL 1



## POINT LIGHTING CORPORATION

Mail: P.O. Box 686, Simsbury, CT 06070      Plant: West Dudley Town Rd, Bloomfield, CT  
Tel 01 860.243.0600      USA      Fax 01 860.243.0665  
email: Info@PointLighting.com      website: www.PointLighting.com



## INSTALLATION - ASSEMBLY

Unpack the PWC Wind Cone and lay the pieces on the ground near the mounting pad. The wind cone will be assembled on the ground before mounting it on the mounting pad. Unpack the PL10290-4-xxx Lighting Assembly. Attach the four (4) floodlight lamp holders (PL10266 / PL10266-L) to the threaded holes drilled in the sides of the junction box. Set the floodlight arm downward at the 67.5-degree angle mark and lock them in place with the provided locknuts. Wire all lamp-holders and optional POL Obstruction Light in parallel. Connect all white wires to white wires. Connect all black wires to black wires. These wires will later be connected to the SOW cord that runs down the pole.

Attach the PL10290-4-xxx Lighting Assembly on top of the PL10299-9.5 Bearing Support Assembly. The top of the Bearing Support Assembly is the end closest to the bearing.

Remove the junction box cover from the PL10290-4-xxx (xxx = voltage, 120 or 230) Lighting Assembly, placing it aside in a safe location. The supplied 30 feet of SOW cable is fitted with a pre-installed cable clamp stress relief and ring terminal on one end of the cable. This end is to be at the lighting assembly junction box. Pull the unmodified end of the SOW cable through the lighting assembly junction box, down through the pole, and out the bottom. In the lighting assembly junction box, position the cable clamp strain relief and tighten the screws so the cable cannot pull out. See drawings **800867 & 800141** for further details of the Lighting Assembly.

See **Installation Detail 1**. Couple the PL10299-9.5 Bearing Support Assembly to the PL10298A adapter, PL10300 coupling and PL10412A floor flange.

Tighten the PL10299-9.5 Bearing Support Assembly hand tight only. Then snug down slightly with hand tool. Do not over tighten as you may damage the threads. After tightening, sand any damage to the painted surface and apply the provided orange touch-up paint.

Place a bead of clear flexible silicone sealant around the point where the Bearing Support Assembly enters the top of the threaded adapter. This will prevent water collection inside the lower pole.

Do not mount PWC to the mounting pad at this time.

## POINT LIGHTING CORPORATION

Mail: P.O. Box 686, Simsbury, CT 06070      Plant: West Dudley Town Rd, Bloomfield, CT  
Tel 01 860.243.0600      USA      Fax 01 860.243.0665  
email: [Info@PointLighting.com](mailto:Info@PointLighting.com)      website: [www.PointLighting.com](http://www.PointLighting.com)



## INSTALLATION - WIRING

Connect the SOW cable to the wires of the Lighting Assembly using the two (2) epoxy wire nuts provided inside the junction box. The wires from the floodlight lamp holders and the optional POL obstruction light must be wired in parallel. Splice all black (line) wires together using one of the provided epoxy filled wire nuts (PL10227-E-6). Splice all white (neutral) wires together using the other provided epoxy filled wire nut. Refer to lighting assembly drawings **800867 & 800141**.

The green wire of the SOW cable is equipped with a pre-installed ring terminal. This ring terminal must be connected to the ground screw in the lighting assembly junction box.

Reattach the junction box cover with the POL attached to it once all wiring splices have been made.

Make your electrical connections at the base with the power OFF at the source. Refer to wind cone drawing **800866**.

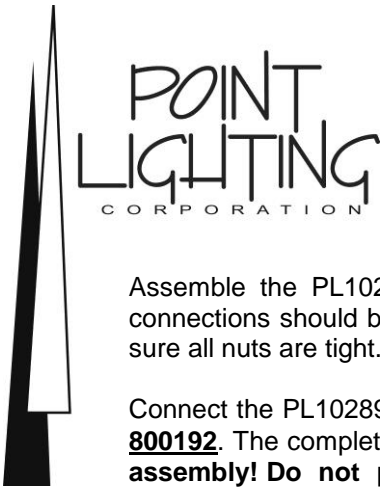
**The incoming electric power must be protected by a suitable circuit breaker at the source.**

Install the floodlight lamps into the holders on top of the pole and temporarily turn on the power to make sure all your connections are correct, then disconnect power at the source.

**NOTE: This product contains metal oxide varistor type surge protection. Due to the leakage current inherent in this surge protection, Point Lighting does not recommend using ground fault interrupter or similar type circuit breakers. Circuit breakers such as GFI (Ground Fault Interrupter), ELCB (Earth Leakage Circuit Breaker) or similar type circuit breakers may experience nuisance tripping.**

## POINT LIGHTING CORPORATION

Mail: P.O. Box 686, Simsbury, CT 06070      Plant: West Dudley Town Rd, Bloomfield, CT  
Tel 01 860.243.0600      USA      Fax 01 860.243.0665  
email: Info@PointLighting.com      website: www.PointLighting.com



## INSTALLATION - FINAL

Assemble the PL10289 Basket Assembly as shown in drawing **800192**. All nuts and all cross-arm connections should be on the inside of the rings so the two rings will have a completely flat surface. Be sure all nuts are tight. We recommend using Loctite 242 on the threads.

Connect the PL10289 Basket Assembly to the Bearing Support Assembly at points indicated on drawing **800192**. The completed windcone should look like drawing **800866**. **Take care not to drop the finished assembly! Do not place any weight on the basket or lighting assembly while erecting the windcone!**

Attach the windsock to the Basket Assemblies large ring by placing the flaps over the ring and using the quarter-turn fasteners.

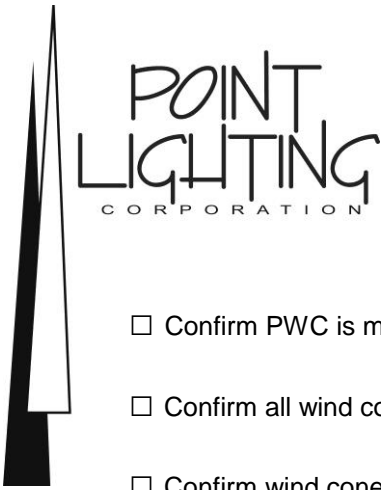
Erect the wind cone on the mounting pad anchor bolts as shown in **Installation Detail 1**. Check the vertical plumb of the pole while another installer adjusts the four nuts until the pole is vertical, plumb and resting on all four nuts. If correct, concrete in the space around the leveling nuts between the floor flange and the concrete pad.

**INFORMATION FOR THE OWNER:** This unit is rated for steady wind speeds up to 86-mph as stated in the FAA Advisory Circular. This type unit has been tested in accordance with test procedures defined by the FAA. Questions regarding the test procedures and the underlying calculations should be directed to the FAA. Overloading the unit by vehicle or aircraft impact, high winds, wind gusts, wind turbulence, jet blast, excessive loading of snow and ice and similar conditions or combination of conditions will exceed the design load and cause the unit to fail.

**MAINTENANCE NOTE:** Grease the bearings with a small amount of No. 2 Lithium grease every two (2) months.

## POINT LIGHTING CORPORATION

Mail: P.O. Box 686, Simsbury, CT 06070      Plant: West Dudley Town Rd, Bloomfield, CT  
Tel 01 860.243.0600      USA      Fax 01 860.243.0665  
email: [Info@PointLighting.com](mailto:Info@PointLighting.com)      website: [www.PointLighting.com](http://www.PointLighting.com)



## COMMISSIONING GUIDE

- Confirm PWC is mounted on a solid foundation.
- Confirm all wind cone mounting hardware is tight.
- Confirm wind cone basket rotates freely.
- Confirm the windsock is installed with grommets facing down.
- Confirm all wiring completed and connections properly terminated.
- Check that each PWC is properly wired as shown in the Wiring Diagram.
- Verify that the voltage on each fixture label is the same as the system line voltage.
- Apply system power to wind cone and confirm all lamps illuminate.

## POINT LIGHTING CORPORATION

Mail: P.O. Box 686, Simsbury, CT 06070      Plant: West Dudley Town Rd, Bloomfield, CT  
Tel 01 860.243.0600      USA      Fax 01 860.243.0665  
email: [Info@PointLighting.com](mailto:Info@PointLighting.com)      website: [www.PointLighting.com](http://www.PointLighting.com)



**SPARE PARTS**

PART DESCRIPTION	PART NUMBER	QTY/UNIT
Wind Cone Lighting Assembly: (xxx = Voltage, 120 or 230V)	PL10290-4-xxx	
Obstruction Light (120V)	POL-20000-R-116-34B	1
Obstruction Light (230V)	POL-20000-R-116A2-34B	1
Obstruction Light (120V) (opt -MT)	POL-20000-R-116-34B-MT	1
Obstruction Light (230V) (opt -MT)	POL-20000-R-116A2-34B-MT	1
Obstruction Light LED (230V) (opt -DIR -MT)	POL-21005-2F-R-34B-S-MT-NC	1
Obstruction Light LED (230V) (opt -DIR)	POL-21005-2F-R-34B-S-NC	1
Obstruction Light LED (120V) (opt -DIR -MT)	POL-21005-1F-R-34B-S-MT-NC	1
Obstruction Light LED (120V) (opt -DIR)	POL-21005-1F-R-34B-S-NC	1
Obstruction Light LED (120/230V) (opt -D -MT)	POL-22001-1F-R-34B-S-MT	1
Obstruction Light LED (120/230V) (opt -D)	POL-22001-1F-R-34B-S	1
Lamp 116W 120V for POL-20000	PL10024-116	1
Lamp 116W 230V for POL-20000	PL10025-116	1
Lens Red for POL-20000	PL10001T	1
Lamp holder PAR 38 Halogen	PL10266	4
Lamp PAR 38 120W 120V	PL10387	4
Lamp PAR 38 120W 230V	PL10736-1	4
Lamp holder PAR 38 LED (opt -L)	PL10266-L	4
Lamp PAR 38 LED 120V (opt -L)	PL10993	4
Lamp PAR 38 LED 230V (opt -L)	PL10993-1	4
Basket Assembly 8-ft Sock (size 1):	PL10289	1
Large Ring	PL10289-1	1
Small Ring	PL10289-2	1
Diagonal Brace	PL10289-3	1
Side Brace	PL10289-4	2
Connecting Arm	PL10289-5	2
Hardware	Set	1
Windsock 8-ft Orange Size 1	PL10063-CH	1
Windsock 8-ft Red/White Size 1	PL10590	1
Bearing Support Assembly:	PL10299-9.5	1
Pipe Assembly	PL10299-1M-9.5	1
Bearing Assembly	PL10319	2
Hardware	Set	1
Bracket, Cross-tie across bearing	PL10321	2
Bracket, Reinforcing Bar 8-ft (size 1)	PL10320-1	1
Breakable Coupling	PL10300	1
Rigid Coupling* (Option -G)	PL10932	1
Adapter	PL10298A	1
Floor Flange (Option -FF)	PL10412A	1

\*If the owner decides to mount the wind cone on a roof, we recommend Option -G Rigid Coupling be used in place of the standard frangible (breakable) coupling. PL10932 replaces PL10300 & PL10298A.

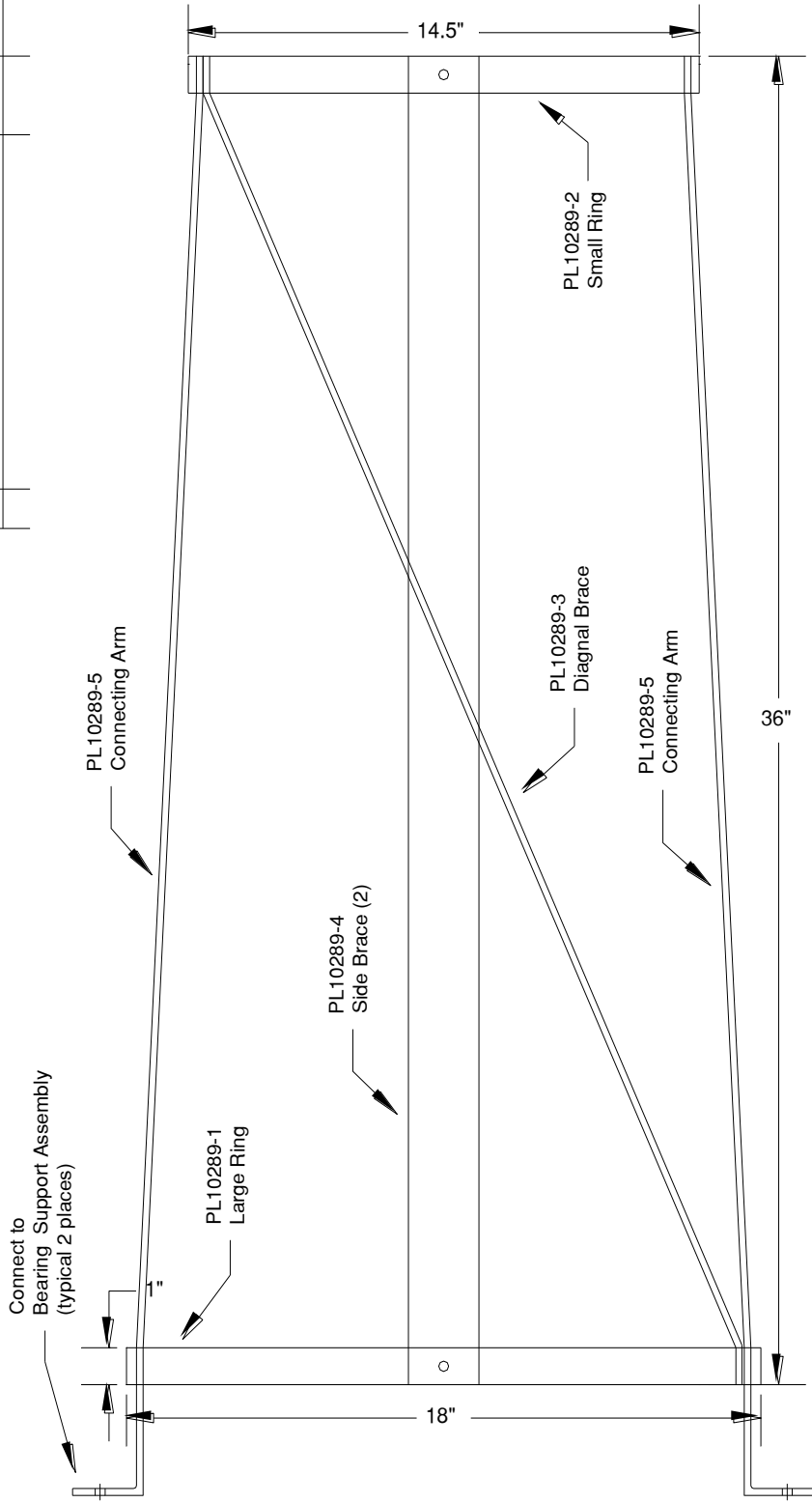
**POINT LIGHTING CORPORATION**

Mail: P.O. Box 686, Simsbury, CT 06070      Plant: West Dudley Town Rd, Bloomfield, CT  
Tel 01 860.243.0600      USA      Fax 01 860.243.0665  
email: Info@PointLighting.com      website: www.PointLighting.com



REVISIONS

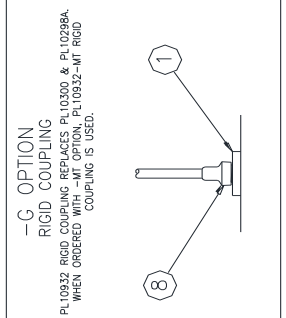
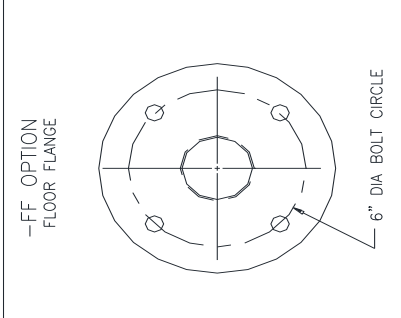
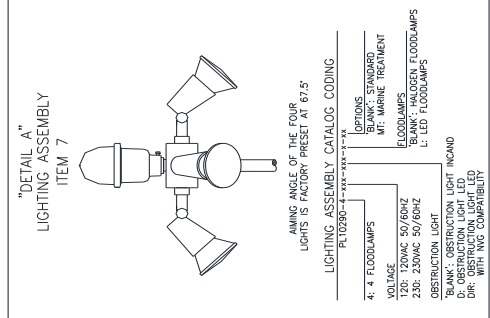
REV	DESCRIPTION	DATE	APPR



**HARDWARE KIT:**  
 Qty. 8 PL10296 Screw  
 Qty. 8 PL10297 Lockwasher  
 Qty. 8 PL10256 Nut

		P.O. BOX 408 HARTFORD, CT 06103 USA
<b>WINDSOCK BASKET ASSEMBLY</b> SIZE 1		
TOLERANCES UNLESS OTHERWISE SPECIFIED (inches) .X ± 0.06 .XX ± 0.020 .XXX ± 0.005 ANGLES ± 0° 30'	DRAWING NO. <b>800192</b> SIZE <b>A</b>	CATALOG NO. <b>PL10289</b> REV.
PROJECT ENGINEERING DRAWN <b>SAM</b>	DATE <b>4/09/01</b>	FILE/ENGINEERING/PWC/PL10289-1 SHEET 1 of 1

THIS DOCUMENT IS THE PROPERTY OF POINT LIGHTING CORPORATION AND IS DELIVERED UNDER THE ASSUMPTION OF REPRODUCTION OR USE OF THIS DOCUMENT FOR ANY PURPOSE OTHER THAN THAT FOR WHICH IT WAS PREPARED. NO PART OF THIS DOCUMENT MAY BE REPRODUCED OR TRANSMITTED IN ANY FORM OR BY ANY MEANS WITHOUT THE WRITTEN PERMISSION OF POINT LIGHTING CORPORATION.



REV	DESCRIPTION	DATE	APPL
C	UPDATED PARTSLIST ITEM 1	10/02	JMN
D	ADDED -RW OPTION	10/14	JMN
E	REMOVED DC FLOOD LIGHTS. ADDED MT OPTION TO ITEM 7.	7/21/14	JDS
F	CHANGED ITEM 7 TO 4 FLOODLIGHTS.	1/8/15	JDS
G	ADDED "ITEM, X" AND WIRING CODING	8/28/15	AJS
H	CHANGED FLOOD ANMING ANGLE TO 67.5°	10/15/15	AJS

WINDCONE CATALOG CODING

PWC-8061L-XXX-XX-XXX-X-XX

OPTIONAL FINISH  
"BLANK" STANDARD FINISH  
MT: MARINE TREATMENT  
FLOODLAMPS  
"BLANK": HALOGEN FLOODLAMPS  
L: LED FLOODLAMPS  
OBSTRUCTION LIGHT  
"BLANK": INCANDESCENT  
D: OBSTRUCTION LIGHT LED  
DIR: OBSTRUCTION LIGHT W/ NVG  
WIND SOCK COLOR  
ON: ORANGE NYLON  
RW: RED/WHITE  
SYSTEM VOLTAGE  
120: 120VAC LIGHTING SUBASSEMBLY  
230: 230VAC LIGHTING SUBASSEMBLY

ITEM	PART NUMBER	QTY	DESCRIPTION
8	PL10932-MT	1	RIGID COUPLING (-G & -MT OPTION)
8	PL10932	1	RIGID COUPLING (-G OPTION)
7	SEE "DETAIL A"	1	LIGHTING ASSEMBLY
6	PL10063-CH	1	WINDSOCK, SIZE 1, (OPTION -ON)
6	PL10590	1	WINDSOCK, SIZE 1, (OPTION -RW)
5	PL10289	1	WINDSOCK BASKET ASSEMBLY, SIZE 1
4	PL10299-9.5	1	BEARING SUPPORT ASSEMBLY
3	PL10298A-MT	1	ADAPTER 2" TO 1" (-MT OPTION)
3	PL10298A	1	ADAPTER 2" TO 1"
2	PL10300-MT	1	BREAKABLE COUPLING 2" (-MT OPTION)
2	PL10300	1	BREAKABLE COUPLING 2"
1	PL10412A-MT	1	FLOOR FLANGE (OPTION -FF & -MT)
1	PL10412A	1	FLOOR FLANGE (OPTION -FF)

**POINT LIGHTING CORPORATION**  
P.O. BOX 888  
SUSSEX, CT 06080 USA

TOLERANCES UNLESS OTHERWISE SPECIFIED (Inches)

.X ± 0.06  
.XX ± 0.020  
.XXX ± 0.005  
ANGLES ± 0° 30'

PROJECT RBP 05/28/15  
ENGINEERING RBP  
DRAWN RBP 09/11/07

TITLE  
PWC POINT WINDCONE ASSEMBLY DRAWING  
OPTION -L (LED FLOODS) AND -D (LED OBSTRUCTION)

SCALE: NTS  
FILE: ENGINEERING\PWC\800866

DRAWING NO. 800866  
CATALOG NO. PWC-8061L-D-L  
REV. H

PROJECT RBP 05/28/15  
ENGINEERING RBP  
DRAWN RBP 09/11/07

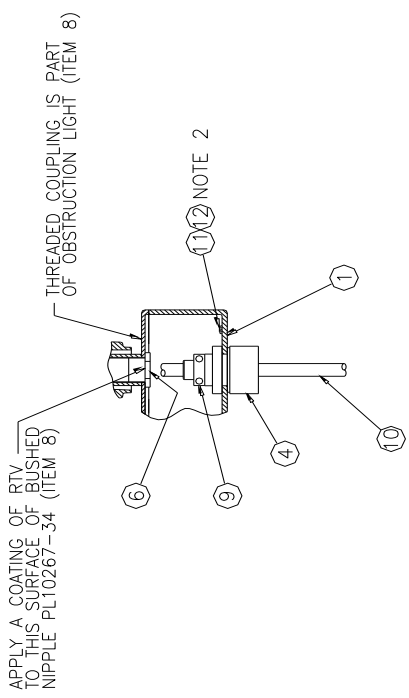
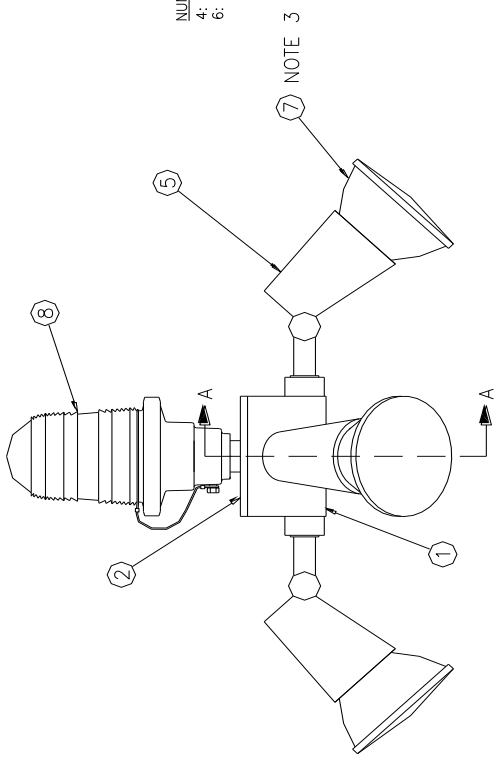
THIS DOCUMENT IS THE PROPERTY OF POINT LIGHTING CORPORATION AND IS DELIVERED UNDER THE EXPRESSED CONDITION THAT IT IS NOT TO BE DISCLOSED, REPRODUCED, COPIED, OR TRANSMITTED IN ANY MANNER OTHER THAN THAT FOR WHICH IT WAS SUPPLIED. PERMISSION IS GRANTED TO THE USER FOR ANY PURPOSE OTHER THAN THAT FOR WHICH IT WAS SUPPLIED MAY NOT BE MADE WITHOUT THE WRITTEN PERMISSION OF POINT LIGHTING CORPORATION.

REVISEIONS		DATE	APPR
1	DESCRIPTION		
2	UPDATED PARTS LIST		
3	UPDATED PARTS LIST		
4	UPDATED PARTS LIST		
5	UPDATED PARTS LIST		
6	UPDATED PARTS LIST		
7	UPDATED PARTS LIST		
8	UPDATED PARTS LIST		
9	UPDATED PARTS LIST		
10	UPDATED PARTS LIST		
11	UPDATED PARTS LIST		
12	UPDATED PARTS LIST		

CATALOG CODING  
PL10290-X-XXX-XX

OPTIONS  
BLANK : STANDARD  
MT: MARINE TREATMENT  
VOLTAGE

NUMBER OF FLOOD LAMPS  
4: FOUR FLOOD LAMPS  
6: SIX FLOOD LAMPS  
120: 120V 50/60HZ  
230: 230V 50/60HZ



- NOTES:
- PLACE THE TWO WIRE NUTS (ITEM 3) INSIDE JUNCTION BOX
  - GROUND. CONNECT POL (ITEM 8) AND CABLE (ITEM 10) GROUND WIRES HERE.
  - SIZE 1 WINDCONES (8-FT WINDSOCK) INCLUDE 4 FLOODLAMPS.  
SIZE 4 WINDCONES (1.2M WINDSOCK) INCLUDE 4 FLOODLAMPS.  
SIZE 2 WINDCONES (12-FT WINDSOCK) INCLUDE 6 FLOODLAMPS.
  - EXCEPTION: SIZE 2 LIR WINDCONES USE 4 FLOODLAMPS PL10290-4-xxx

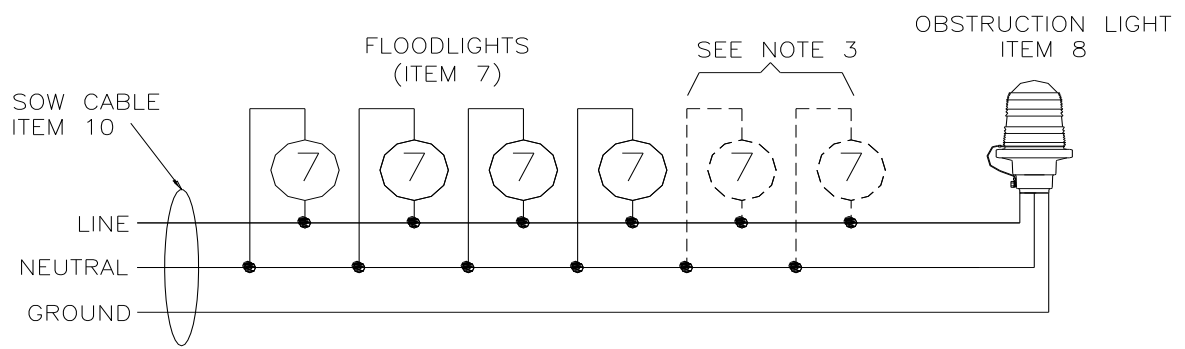
ITEM	PART NUMBER	QTY	DESCRIPTION
12	10159-38	1	SCREW 8-32 X 3/8 (GROUND)
11	10120	2	TERMINAL RING #8 STUD (GROUND)
10	10186	30	CABLE/FT. #16 AWG. 3/C SOW
9	10350	1	CABLE CLAMP, 3/C SOW
8	POL-20000-R-116-34B	1	OBSTRUCTION LIGHT ASSY, 120V
8	POL-20000-R-116A2-34B	1	OBSTRUCTION LIGHT ASSY, 240V
7	10367	4.6	LAMP PAR38 120W 120V
7	10736-1	4.6	LAMP PAR38 120W 230V
6	10267-34	1	BUSHED NIPPLE
5	10266	4.6	LAMP HOLDER
4	10238-10	1	HUB BOX 1-INCH NPT
3	10227-E-6	2	WIRE NUT
2	10496-PMC	1	COVER JUNCTION BOX
1	10490-PMC1	1	JUNCTION BOX

DIMENSIONS (INCHES)		MATERIALS	
DESCRIPTION	QUANTITY	DESCRIPTION	QUANTITY
1	1	STEEL	1
2	2	ALUMINUM	2
3	3	BRASS	3
4	4	BRASS	4
5	5	BRASS	5
6	6	BRASS	6
7	7	BRASS	7
8	8	BRASS	8
9	9	BRASS	9
10	10	BRASS	10
11	11	BRASS	11
12	12	BRASS	12

THIS DOCUMENT IS THE PROPERTY OF POINT LIGHTING CORPORATION. IT IS TO BE USED ONLY FOR THE PROJECT AND SITE SPECIFICALLY IDENTIFIED HEREIN. IT IS NOT TO BE REPRODUCED, COPIED, OR TRANSMITTED IN ANY FORM OR BY ANY MEANS, ELECTRONIC OR MECHANICAL, INCLUDING PHOTOCOPYING, RECORDING, OR BY ANY INFORMATION STORAGE AND RETRIEVAL SYSTEM. WITHOUT THE WRITTEN PERMISSION OF POINT LIGHTING CORPORATION.

SECTION A-A

WIRING DIAGRAM



REV	DESCRIPTION	DATE	APPR
B	ADD 13 AND 14 SEE DRWG. SHEET 3	12/08	PTK
C	ADD WIRE NUTS	12/08	PTK
D	UPDATE PART NUMBER FOR WIRE NUTS	01/09	JMH
E	UPDATE PART NUMBER FOR WIRE NUTS	01/09	JMH
F	UPDATE PART NUMBER FOR WIRE NUTS	01/09	JMH
G	UPDATE PART NUMBER FOR WIRE NUTS	01/09	JMH
H	UPDATE PART NUMBER FOR WIRE NUTS	01/09	JMH
I	UPDATE PART NUMBER FOR WIRE NUTS	01/09	JMH
J	UPDATE PART NUMBER FOR WIRE NUTS	01/09	JMH
K	UPDATE PART NUMBER FOR WIRE NUTS	01/09	JMH
L	UPDATE PART NUMBER FOR WIRE NUTS	01/09	JMH
M	UPDATE PART NUMBER FOR WIRE NUTS	01/09	JMH
N	UPDATE PART NUMBER FOR WIRE NUTS	01/09	JMH
O	UPDATE PART NUMBER FOR WIRE NUTS	01/09	JMH
P	UPDATE PART NUMBER FOR WIRE NUTS	01/09	JMH
Q	UPDATE PART NUMBER FOR WIRE NUTS	01/09	JMH
R	UPDATE PART NUMBER FOR WIRE NUTS	01/09	JMH
S	UPDATE PART NUMBER FOR WIRE NUTS	01/09	JMH
T	UPDATE PART NUMBER FOR WIRE NUTS	01/09	JMH
U	UPDATE PART NUMBER FOR WIRE NUTS	01/09	JMH
V	UPDATE PART NUMBER FOR WIRE NUTS	01/09	JMH
W	UPDATE PART NUMBER FOR WIRE NUTS	01/09	JMH
X	UPDATE PART NUMBER FOR WIRE NUTS	01/09	JMH
Y	UPDATE PART NUMBER FOR WIRE NUTS	01/09	JMH
Z	UPDATE PART NUMBER FOR WIRE NUTS	01/09	JMH

CATALOG CODING  
 PL10290-4-xxx-xxx-L-xx

OPTIONS  
 BLANK: STANDARD  
 MT: MARINE TREATMENT

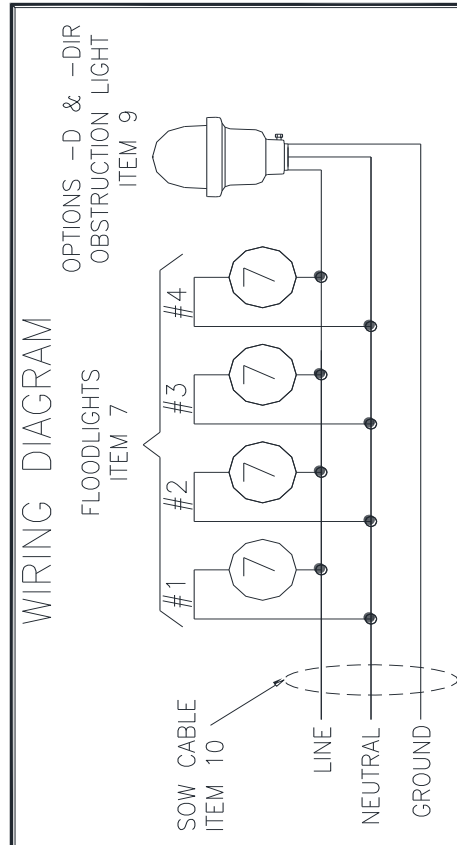
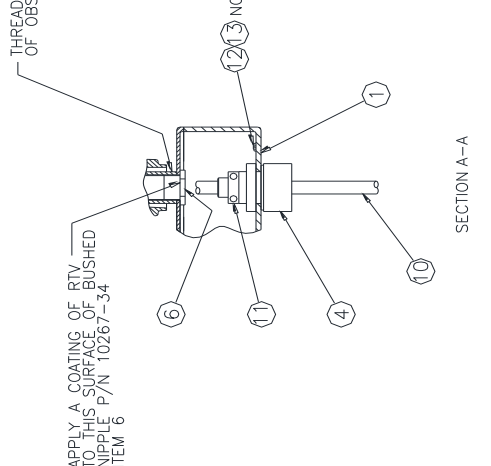
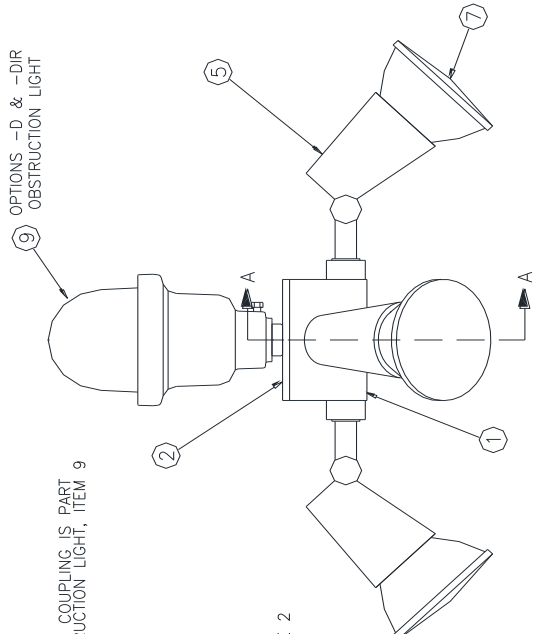
L: LED FLOODLIGHTS

4: 4 FLOODLAMPS

VOLTAGE  
 120: 120VAC 50/60HZ  
 230: 230VAC 50/60HZ

OBSTRUCTION LIGHT

BLANK: NO OBSTRUCTION LIGHT  
 D: LED OBSTRUCTION LIGHT  
 DIR: LED OBSTRUCTION LIGHT WITH NVG COMPATIBILITY



- NOTES:
- PLACE TWO WIRE NUTS (PL10227-E-6, ITEM 3) INSIDE JUNCTION BOX
  - CONNECT THE GROUND WIRE OF THE OBSTRUCTION LIGHT (ITEM 9) AND THE GREEN WIRE OF THE SOW CABLE (ITEM 10) TO THIS SCREW.

ITEM	PART NUMBER	QTY	DESCRIPTION
9	PL10290-4-R-4M-S-MT-NC	1	POL LED STANDARD SINGLE 230V L-DIR (OPT)
9	PL10290-4-R-4M-S-NC	1	POL LED STANDARD SINGLE 230V L-DIR (OPT)
9	PL10290-4-R-4M-S-MT-NC	1	POL LED STANDARD SINGLE 120V L-DIR (OPT)
9	PL10290-4-R-4M-S-NC	1	POL LED STANDARD SINGLE 120V L-DIR (OPT)
9	PL10290-4-R-4M-S-MT	1	POL LED STANDARD SINGLE 120/230V L-DIR (OPT)
9	PL10290-4-R-4M-S	1	POL LED STANDARD SINGLE 120/230V L-DIR (OPT)

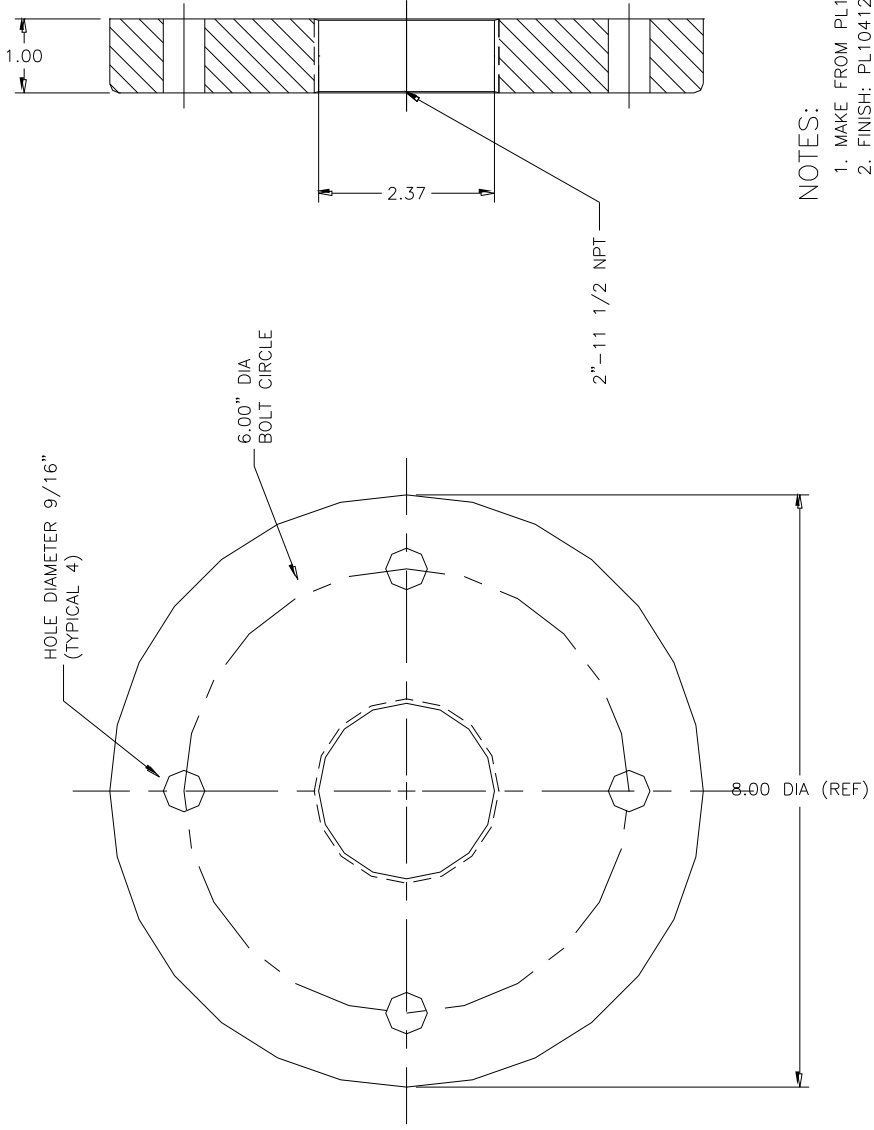
ITEM	PART NUMBER	QTY	DESCRIPTION
13	PL10159-3B	1	SCREW 8-32 X 3/8 (GROUND)
12	PL10120	2	TERMINAL RING 1/8 STUD (GROUND)
11	PL10135	1	CABLE CLAMP 3/16 SOW
10	PL10186	30	CABLE/FT #16 AWG-3/C SOW
9	SEE OBSTRUCTION LIGHT CHART	1	OBSTRUCTION LIGHT
7	PL10893-1	4	LAMP LED FLOOD 120V
6	PL10267-3A	1	BUSHED NIPPLE (-D -DIR OPTS)
5	PL10266-1	4	LAMPHOLDER LED PAR38
4	PL10238-10	1	HUB BOX 1-INCH NPT
3	PL10227-E-6	2	WIRE NUT
2	PL10496-MT	1	COVER JUNCTION BOX(-MT OPTION)
2	PL10496-NC	1	COVER JUNCTION BOX(-DIR -MT OPTS)
2	PL10496-MT	1	COVER JUNCTION BOX(-DIR -MT OPTS)
2	PL10496-NC	1	COVER JUNCTION BOX(-MT OPTION)
1	PL10490-1	1	JUNCTION BOX

ITEM	PART NUMBER	QTY	DESCRIPTION
PARTS COMMON TO ALL			
13	PL10159-3B	1	SCREW 8-32 X 3/8 (GROUND)
12	PL10120	2	TERMINAL RING 1/8 STUD (GROUND)
11	PL10135	1	CABLE CLAMP 3/16 SOW
10	PL10186	30	CABLE/FT #16 AWG-3/C SOW
9	SEE OBSTRUCTION LIGHT CHART	1	OBSTRUCTION LIGHT
7	PL10893-1	4	LAMP LED FLOOD 120V
6	PL10267-3A	1	BUSHED NIPPLE (-D -DIR OPTS)
5	PL10266-1	4	LAMPHOLDER LED PAR38
4	PL10238-10	1	HUB BOX 1-INCH NPT
3	PL10227-E-6	2	WIRE NUT
2	PL10496-MT	1	COVER JUNCTION BOX(-MT OPTION)
2	PL10496-NC	1	COVER JUNCTION BOX(-DIR -MT OPTS)
2	PL10496-MT	1	COVER JUNCTION BOX(-DIR -MT OPTS)
2	PL10496-NC	1	COVER JUNCTION BOX(-MT OPTION)
1	PL10490-1	1	JUNCTION BOX

THIS DOCUMENT IS THE PROPERTY OF POINT LIGHTING. IT IS TO BE USED ONLY FOR THE PROJECT AND LOCATION SPECIFICALLY IDENTIFIED HEREIN. IT IS NOT TO BE REPRODUCED, COPIED, OR TRANSMITTED IN ANY FORM OR BY ANY MEANS, ELECTRONIC OR MECHANICAL, INCLUDING PHOTOCOPYING, RECORDING, OR BY ANY INFORMATION STORAGE AND RETRIEVAL SYSTEM.

POINT LIGHTING  
 PNC WINDOONE LIGHTING ASSEMBLY DRAWING  
 SIZE: 11 LED, MAX COOLIES  
 IDENTIFICATION NO. P/N: 10290-4-xxx-xxx-L-MT F  
 DATE: 01/09/09  
 REV: 000067  
 SCALE: 1/2" = 1'-0"

REVISIONS		
REV	DESCRIPTION	DATE



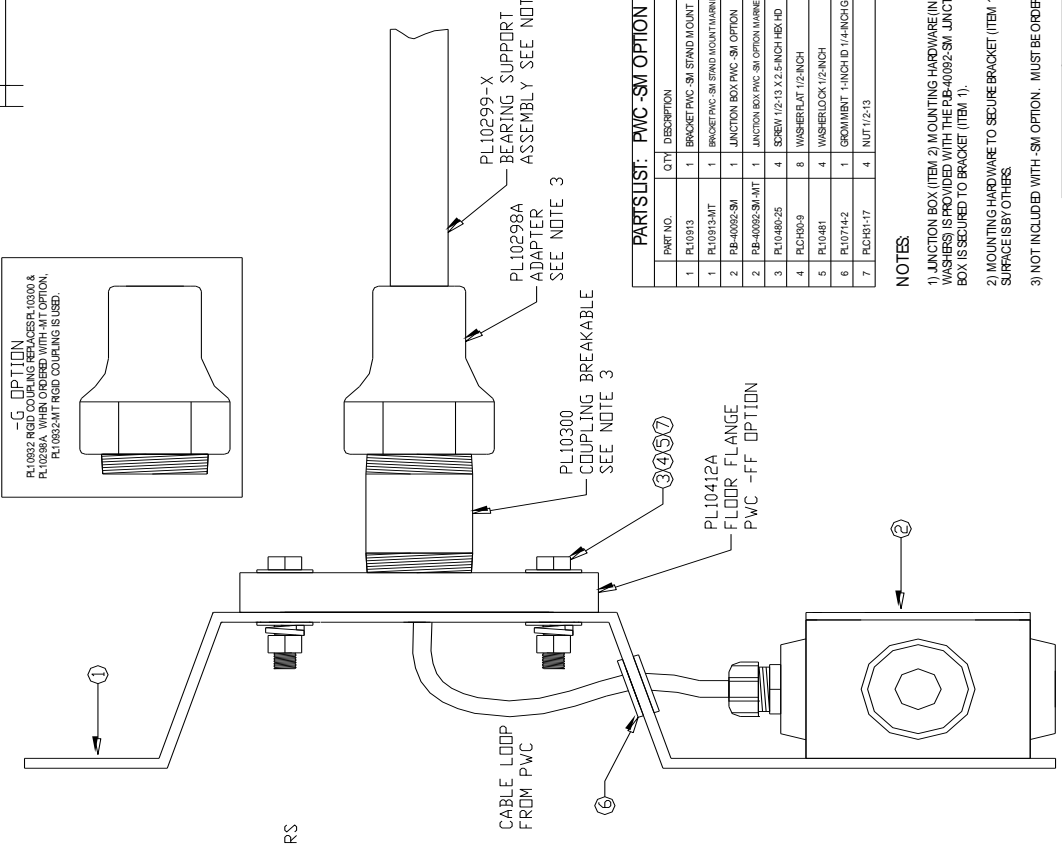
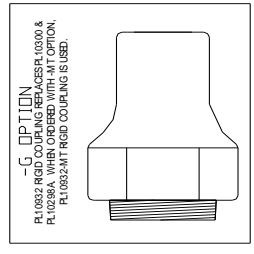
**NOTES:**

1. MAKE FROM PL10412A-MACH
2. FINISH: PL10412A - PAINT ORANGE #12197 PER FED-STD 595.
3. FINISH: PL10412A-MT - CHROMATE, EPOXY POWDER PRIMER PAINT #14097 OLIVE DRAB
4. 1/2" DIAMETER ANCHOR BOLTS (BY OTHERS) FOR FLANGE MOUNTING.

		P.O. BOX 999 BOSTON CT 06033, USA
TOLERANCES UNLESS OTHERWISE SPECIFIED (Inches)		TITLE <b>FLOOR FLANGE, -FF</b>
.X	± 0.06	PWC L-806 OPTION -FF
.XX	± 0.020	SIZE C 1801471 PL10412A
.XXX	± 0.005	CATALOG NO.
ANGLES	± 0' 30"	REV.
PROJECT		
ENGINEERING		
DRAWN	RBP	SCALE: FULL DATE: 11/28/11 SHEET 1 of 1

THIS DOCUMENT IS THE PROPERTY OF POINT LIGHTING CORPORATION AND IS LOANED UNDER THE EXPRESS UNDERSTANDING THAT IT IS TO BE USED FOR THE PURPOSES OTHER THAN THAT FOR WHICH IT WAS LOANED. NO PART OF THIS DOCUMENT IS TO BE REPRODUCED OR TRANSMITTED IN ANY FORM OR BY ANY MEANS WITHOUT THE PERMISSION OF POINT LIGHTING CORPORATION.

REV	DESCRIPTION	DATE	APP
X	UPDATED: AFFIX FLANGE TO B-10412A ADDED: OPTION BLOCK		JMN

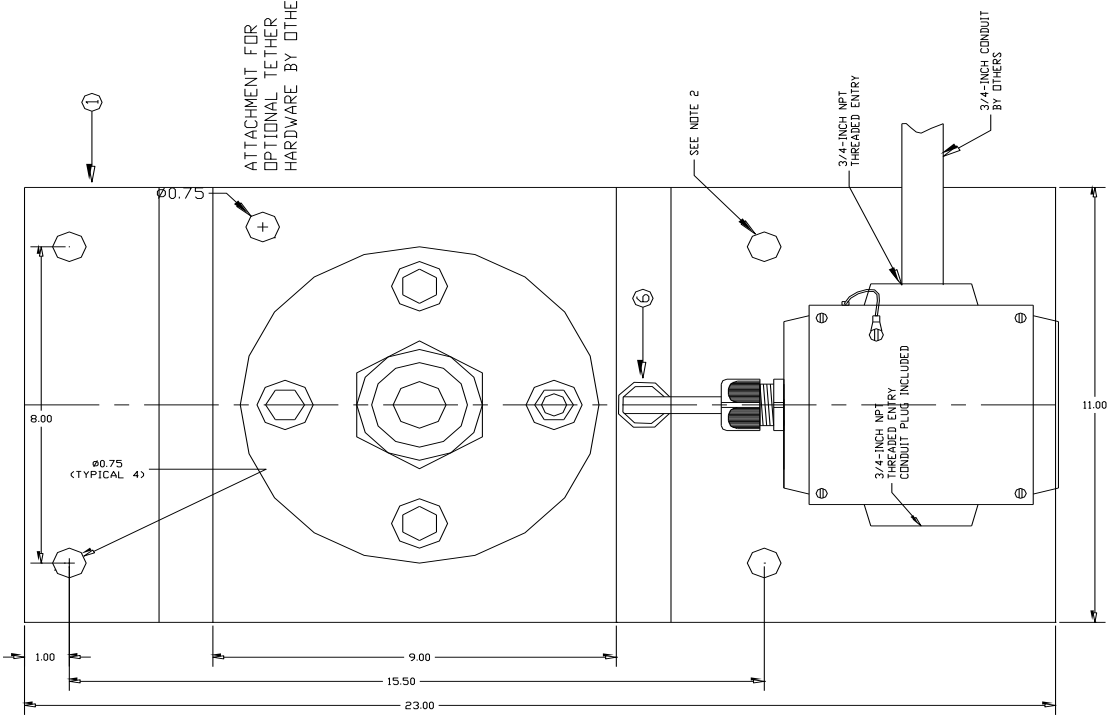


**PARTS LIST: PWC-SM OPTION**

PART NO.	QTY	DESCRIPTION
1	1	BRACKET PWC-SM STAND MOUNT
1	1	BRACKET PWC-SM STAND MOUNT MARINE TREATMENT
2	1	JUNCTION BOX PWC-SM OPTION
2	1	JUNCTION BOX PWC-SM OPTION MARINE TREATMENT
3	1	SCREW 1/2-13 X 2.5 INCH HEX HD
4	6	WASHER/FLAT 1/2 INCH
5	4	WASHER/LOCK 1/2 INCH
6	1	GROMMET 1 INCH ID 1/4 INCH GSW
7	4	NUT 1/2-13

**NOTES:**

- 1) JUNCTION BOX (ITEM 2) MOUNTING HARDWARE (INCLUDING SEALING WASHERS) IS PROVIDED WITH THE PB-40092-SM JUNCTION BOX. JUNCTION BOX IS SECURED TO BRACKET (ITEM 1).
- 2) MOUNTING HARDWARE TO SECURE BRACKET (ITEM 1) TO THE MOUNTING SURFACE IS BY OTHERS.
- 3) NOT INCLUDED WITH -SM OPTION. MUST BE ORDERED SEPARATELY.



UNITS	INCHES (mm)
SCALE	AS SHOWN
DATE	08/20/11
PROJECT	POINT LIGHTING
DESIGNER	JMN
CHECKER	JMN
DATE	08/20/11
SCALE	AS SHOWN
PROJECT	POINT LIGHTING
DESIGNER	JMN
CHECKER	JMN
DATE	08/20/11

UNITS	INCHES (mm)
SCALE	AS SHOWN
DATE	08/20/11
PROJECT	POINT LIGHTING
DESIGNER	JMN
CHECKER	JMN
DATE	08/20/11

THIS DOCUMENT IS THE PROPERTY OF POINT LIGHTING CORPORATION. IT IS LOANED TO YOU BY THE COMPANY AND IS NOT TO BE REPRODUCED, COPIED, OR TRANSMITTED IN ANY FORM OR BY ANY MEANS, ELECTRONIC OR MECHANICAL, INCLUDING PHOTOCOPYING, RECORDING, OR BY ANY INFORMATION STORAGE AND RETRIEVAL SYSTEM. WITHOUT THE WRITTEN PERMISSION OF POINT LIGHTING CORPORATION.

UNITS	INCHES (mm)
SCALE	AS SHOWN
DATE	08/20/11
PROJECT	POINT LIGHTING
DESIGNER	JMN
CHECKER	JMN
DATE	08/20/11

UNITS	INCHES (mm)
SCALE	AS SHOWN
DATE	08/20/11
PROJECT	POINT LIGHTING
DESIGNER	JMN
CHECKER	JMN
DATE	08/20/11