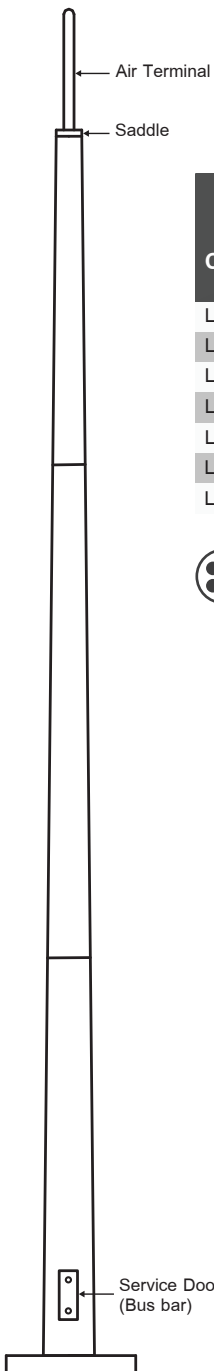


Lightning Pole



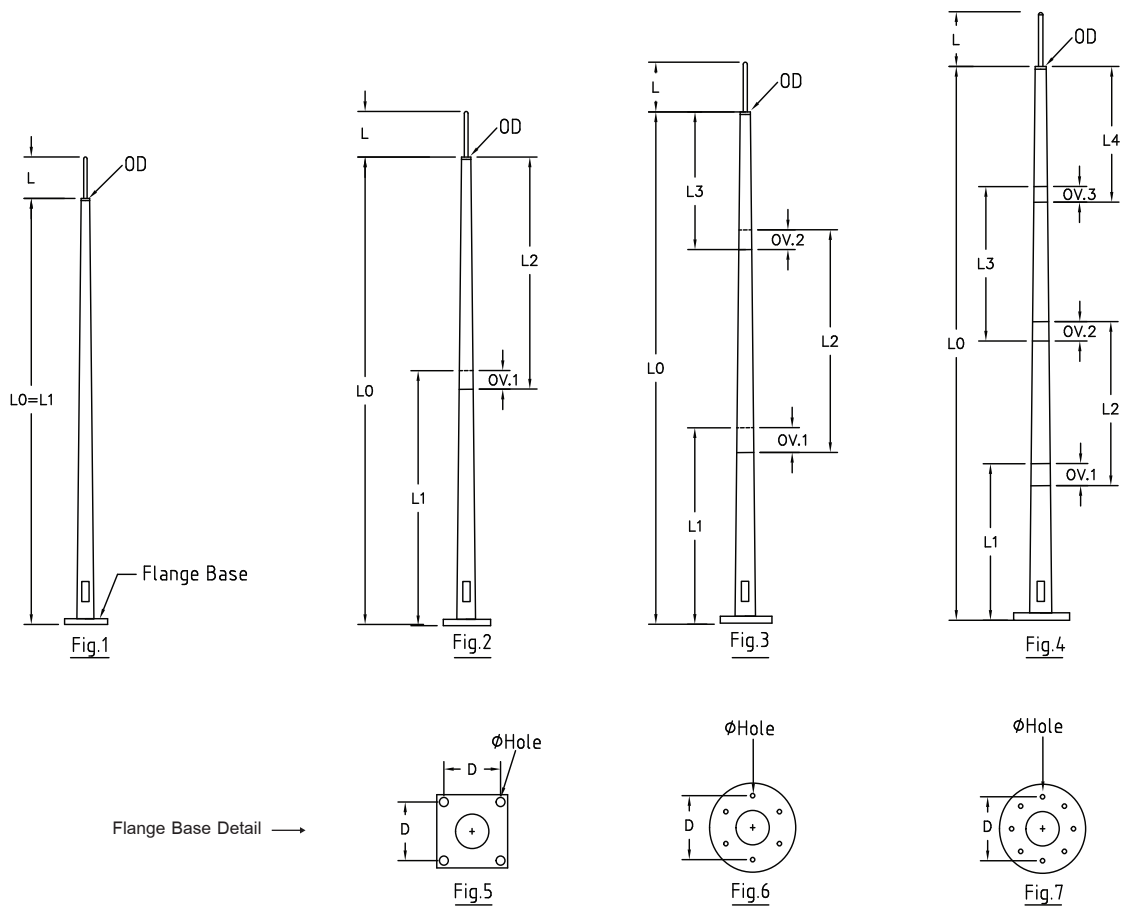
Code No.	Figure	Dimensions (mm)										O.D. Ø(mm)	Flange Base Dimensions (mm)			Approx. Weight (kg)
		LO (mm)	High	L	L1	L2	L3	L4	OV.1	OV.2	OV.3		Figure	Ø Hole (mm)	D (mm)	
LTLP-3000	1	2400	3000	600	2400	-	-	-	-	-	-	60	5	25	160	26.92
LTLP-6000	1	5400	6000	600	5400	-	-	-	-	-	60	5	32	250	78.88	
LTLP-9000	2	8400	9000	600	5400	3200	-	-	200	-	60	5	32	250	132.74	
LTLP-12000	3	11300	12000	600	5400	3200	3240	-	300	240	76	5	32	300	227.45	
LTLP-15000	3	14400	15000	600	5400	4880	4780	-	380	280	76	5	32	350	311.05	
LTLP-18000	4	17400	18000	600	5400	4880	4780	3550	530	400	114	6	32	450	461.26	
LTLP-20000	4	19400	20000	600	5400	5600	5500	4400	600	500	140	7	32	550	664.11	



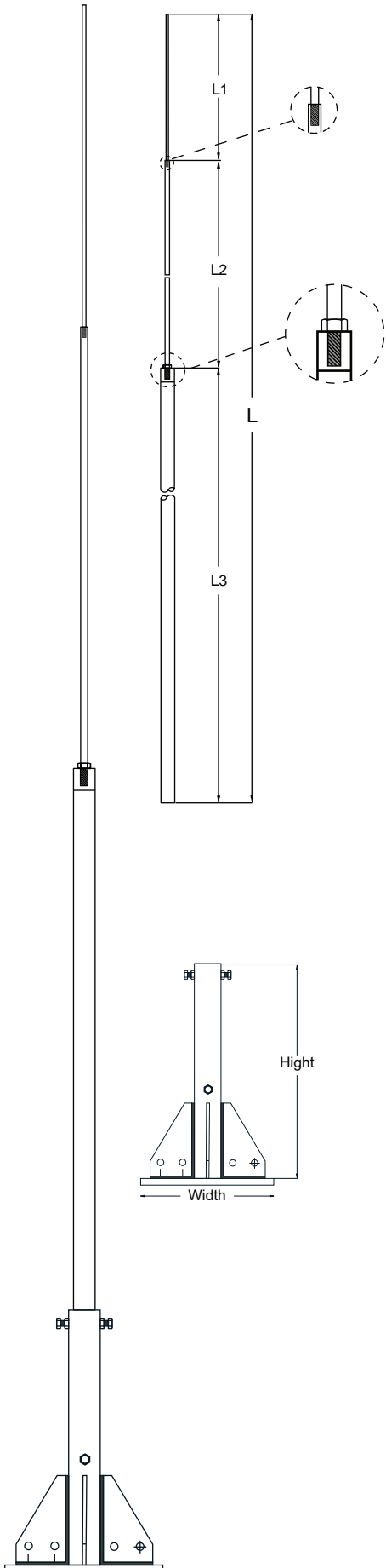
Material
 Air - Terminal, Busbar - Solid Copper - BS EN 13601
 Saddle - Copper Alloy - BS EN 1982
 Pole - Hot Dip Galvanized Steel ASTM A123
 Down conductor - 50 sq mm IEC 01



Application
 Suitable for any areas or projects where air terminal is unable to install and mount on the roof such as oil / gas tank, solar farm etc.
 Max wind load with stand 120 km/h.



Self - Standing Lightning Pole (Hot Dip Galvanized)



Pole

Code No.	L - Hight (mm)	Dimension (mm)			Weight (kg)
		L1	L2	L3	
LTSP - 3000	3000	1000	1000	1000	3.29
LTSP - 4500	4500	1000	1500	2000	5.58
LTSP - 6000	6000	1000	2000	3000	7.87



Test Certificate
IEC 62561 Part 2 (Air Terminal)



Material
L1 : Air rod - Aluminium Dia. 10 mm.
L2 : Stainless Round bar SUS 304 Dia. 16 mm.
L3 : Stainless steel pipe SUS 304 Dia. 42 mm.



Application
Suitable for lightning protection,
Chose select foundation type below.

Fixing foundation

Code No.	Dimension (mm)		Weight (kg)
	Hight	Width	
LTSP-F	500	300	15.70



Material
Hot dipgalvanized steel



Application
Suitable for support self-standing lightning pole. Installation with J-bolt 3/4"(on request) fixing ambed in concrete foundation.