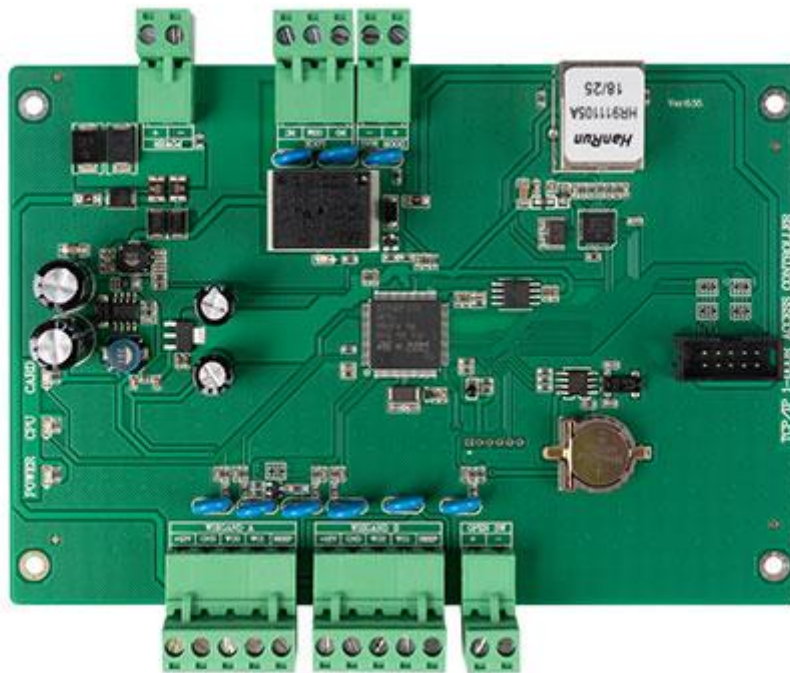


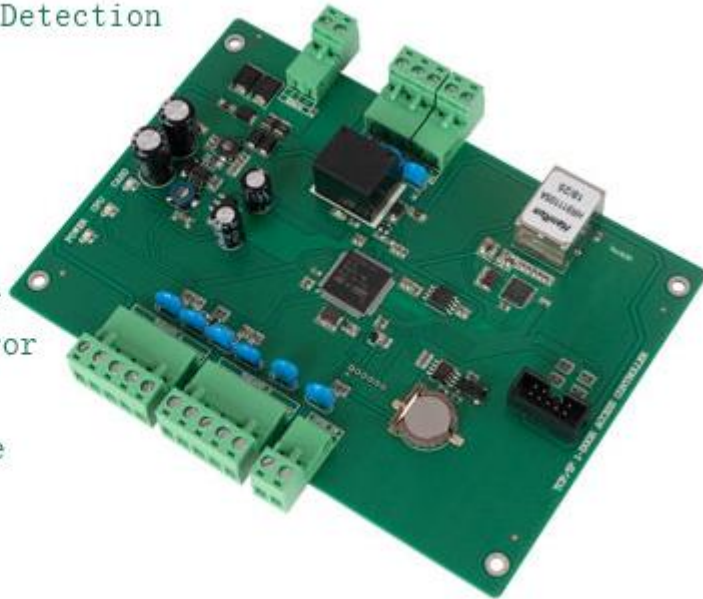
## TCP/IP One Door Access Controller Datasheet



SXK-5912T one door access control board is a product developed with enhanced storage capacity, concurrent communication management of multiple machines (up to 5 computers at the same time), regional interlocking, regional anti-passback, regional fire protection linkage, second-generation card number, dynamic two new functions such as dimensional code algorithm, active contact with cloud platform, etc. It adopts 100MTCP/IP communication mode to truly realize networked data management, can manage 1 door, and supports 42,000 user data, 200,000 event record storage, and 1 set of 7A door lock relay output.

The SXK-5900 series access control board is a new generation of intelligent network access control products. It is developed with a super network processor combined with a large amount of memory to realize true networked data exchange. Data high-speed calculation and super user data management SXK-5900 series access control board not only has common access control functions, it also provides some practical functions that other similar products on the market do not have or rarely have. For specific functions, please refer to the product "System Functions".

- Readers Wire Abnormal Detection
- System Temperature Detection
- Power Input Stability Detection
- Daily Intelligent Self Correction of Time Error
- Exit Switch Available During Valid Time Zone
- Time Interval Setting of Twice Swiping Card



## ● Parameters:

Working Voltage: DC9V-14V

Working Current: < 300mA

Temperature and Humidity: -40°C-75°C (10-90%RH non-frost)

Door Control: 1

Readers: 2

Exit Switch: 1 group

Door Sensor Interface: 1 group

Relay: 1 group

Alarm Extension: 4 enter and 4 exit (fire alarm, bandit alarm, burglar alarm, Gas alarm)

Reading Protocol: Wiegand 26 \ Wiegand 34 \ Wiegand 66

Register cards: 42,000 (Can be extended)

Record Capacity: 200,000 (Can be extended)

Communication Type: TCP/IP (10/100M)

Communication Distance: TCP/IP (100m)

Wiegand: 100m (Suggest 80m)

Size: 157\*130\*20mm

## System Functions:

SXK-5900 series support (standard functions) : Offline operation, read the card to open the door, the password to open the door, time control password valid, read card + password to open the door, the time control card + password valid, manually enter the card number, password to open the door, the first card to open the door, always open card to open the door, open the remote, remote, time to open the door, time normally open, real-time monitoring, abnormal monitoring, electronic maps, duress alarm, fire linkage, police bandit alarm, intrusion alarm, alarm, report the loss of card, card reader to the blacklist illegally card read alarm, open tip/overtime alarm, anti-submarine defense followed, bulk upload, a small amount of upload, two-door interlock, many interlock, multiple cards to open the door, keyboard operation, emergency shutdown, access control attendance, 64 Group opening hours, holidays, etc.

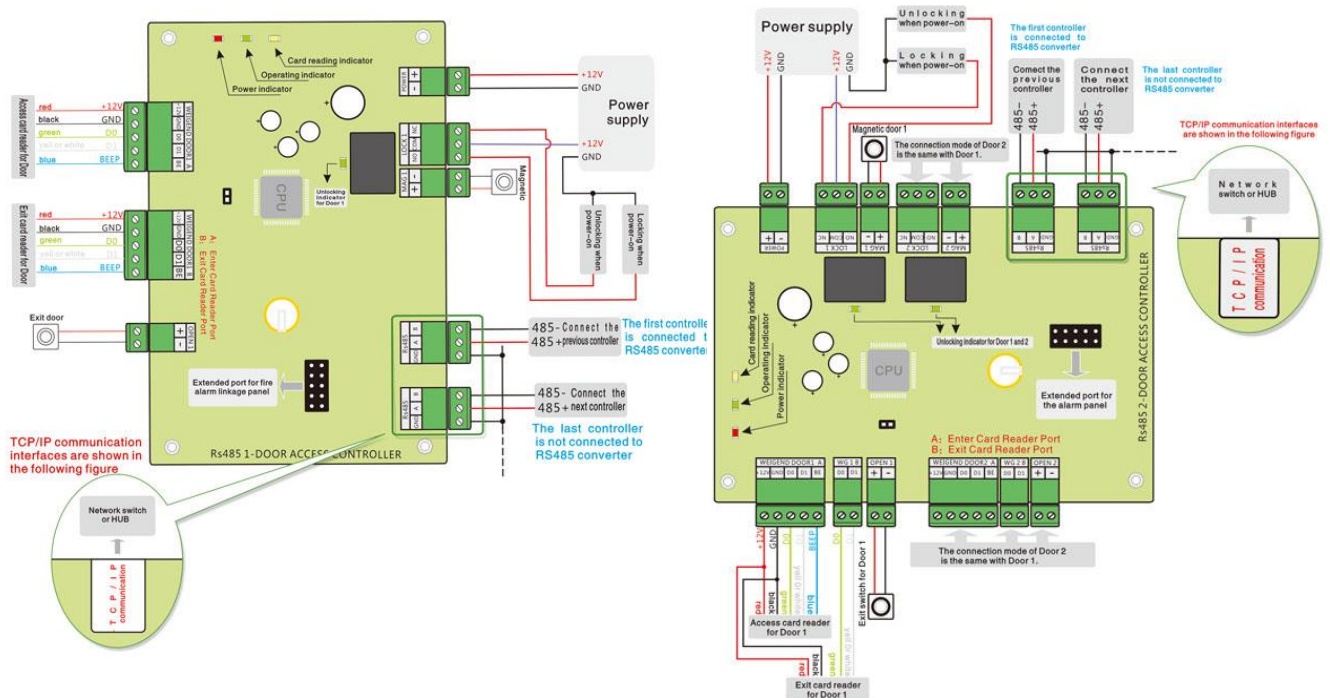
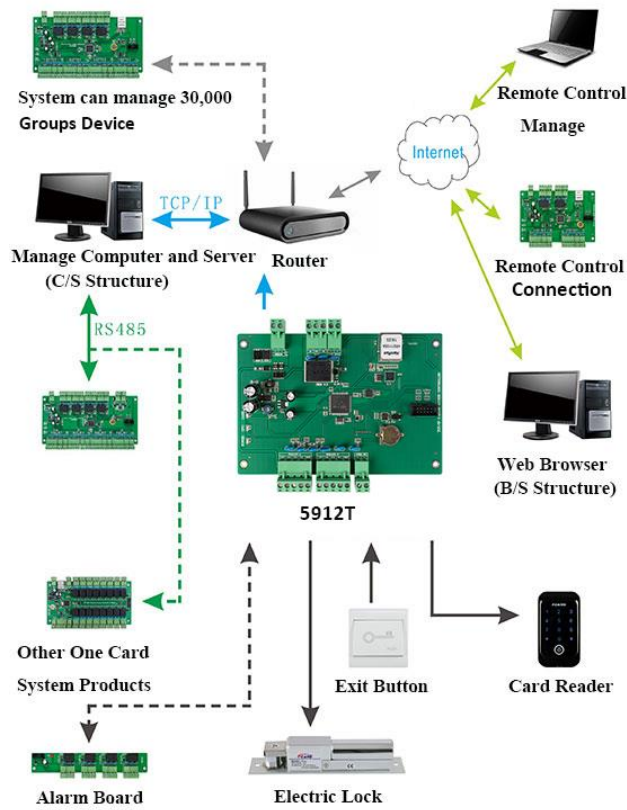
SXK-5900 series support (professional functions) : record card back, repair, prevent detection lock, card read calibration, all card to open the door, open card + all automatic registration, the main board buzzer switch, clock repair itself, the internal and external certification. Open the door, 3 + 1 to open the door, door number query, report to the police telephone calls after the notification, the device has been running days, remote hardware upgrade, etc.

SXK-5900 series support (new function) : in addition to the above functions, we also add technology that is not available or rare for other similar products in the market, such as: Card reader circuit anomaly detection and prompt, temperature detection system environment, and the input power supply temperature on-line monitoring, trial periods, entrance guard patrolling, validity card expired early hint, intelligent clock error corrections, every day out of the door switch controlled by time period, the remote reading card photo, anti-theft alarm host function and interval, door magnetic card reader to the alarm time management, communication encryption data, card number, capacity expands itself, more efficient machine concurrent communication management (maximum 5 computers at the same time control), regional interlock, regional himself back, fire linkage, the second generation card card number, dynamic, take the initiative to contact cloud platform, Wiegand QR code algorithm, Wiegand keyboard issues cards.

SXK-5900 series support (site access control function) : it supports the management of pedestrian turnstile, can realize two-ways control, provides LED screen information output, LCD TV screen information output, supports site information display, can support card reading, fingerprint, face (a set of software unified management), and supports multi-platforms data upload.

The above models can choose FCARD3500 software or the updated version of the one card pass management system software, the software system supports ACCESS and SQL database, support local connection communication, but also remote Internet communication.

## Wiring Diagram:





## Remarks of access control board:

1. Power-on lock: the correct wiring of the electric bolt lock or magnetic lock, the positive electrode of the electric lock is connected to the NC of the controller output terminal, the negative electrode of the electric lock is connected to the GND of the power supply, and the COM of the controller is connected to the +12V of the power supply .
2. Power-on unlock lock: the correct wiring of the electric lock or electric lock, the positive electrode of the electric lock is connected to the output terminal NO of the controller, the negative electrode of the electric lock is connected to the GND of the power supply, and the COM of the controller is connected to the + of the power supply 12V.

## Wiring requirements:

1. AC220V AC power cord: 3\*1.0 square millimeter wire is recommended to prevent leakage, and the ground wire of the power cord is recommended to be grounded;
2. Electric lock wire: 2\*1.0 square millimeter wire must be used, and the maximum length of the line should not exceed 50 meters;
3. RS485 communication line: It is recommended to use 3\*0.5 square millimeter wire, and it is recommended to use twisted pair. The maximum length of the line should not exceed 1200 meters. If it exceeds this distance, please add an RS485 repeater to extend the communication distance;
4. TCP/IP communication line: Please use standard network cable when communicating with one door access controller, and the maximum length of the line should not exceed 100 meters;
5. Card reader line: It is recommended to use 8\*0.5 square millimeter wire, and the maximum line should not exceed 80 meters;
6. Door sensor or exit switch wire: 2\*0.5 square millimeter wire is recommended, and the maximum length of the wire should not exceed 100 meters.

