

Specialty Chemicals
& Materials Trading



FUJI CHEMI CO.,LTD

WE ARE LEADING IN
TRADING BUSINESS

More Creation
More Value

COMPANY PROFILE

Serving Industries Worldwide
from Japan and Global
Chemical Solutions

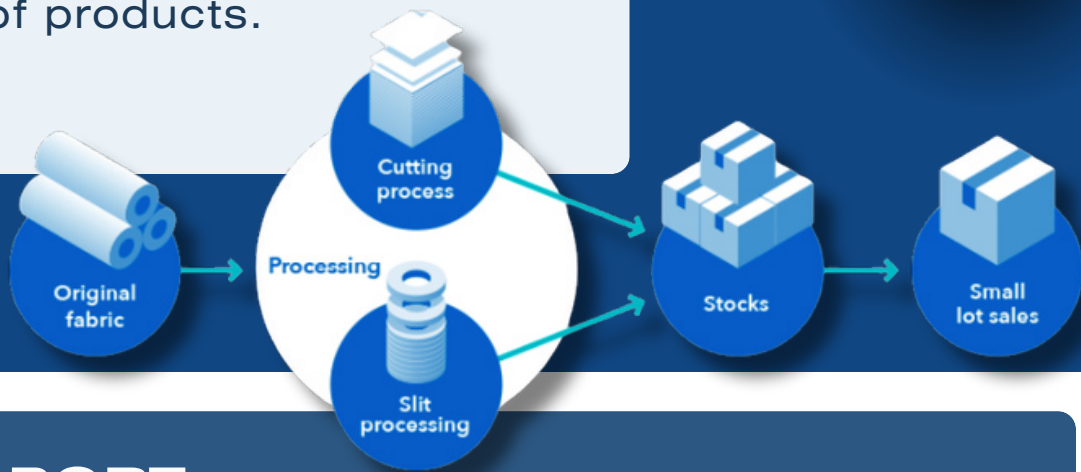


WWW.FUJICHEMITHAI.COM

SERVICE

We will propose the best existing goods from each manufacturer

we support Small Lot Sales to meet clients needs, not only propose a wide range of products.



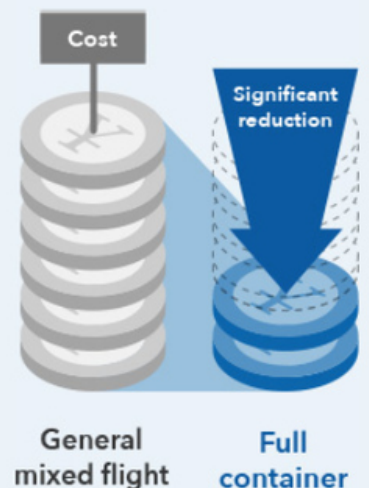
TRANSPORT

One-stop service at domestic and overseas
With bases in Japan / Thailand / Vietnam / China

Logistics simplification



Reduction of transportation costs





70 years of History



Fuji Chemi

... **1951**
Fuji Trading Co., Ltd. was founded.

1969

Opened Osaka Sales Office in Minamihonmachi, Osaka



Fuji Chemi



... **1990**

FUJI CHEMI CO., LTD. was established as Local subsidiary in Bangkok, Thailand.

1993

Opened Processing base in Mito City, Ibaraki Prefecture (Currently Mito Processing Center)



Fuji Chemi



Fuji Chemi

... **2005**

Established Local subsidiary FUJI CHEMI TRADING SHANGHAI CO., LTD. in Shanghai, China.

2012

Acquired management rights of SSK (VIET NAM) CO.,LTD. In Hanoi, Vietnam.



Fuji Chemi



... **2015**

Established FUJICHEMI HI-TECH (THAILAND) CO., LTD as local subsidiary in Chonburi, Thailand.

2021

70th anniversary of founding



Fuji Chemi



ABOUT COMPANY

Company Name FUJI CHEMI CO.,LTD.

Address

9 th Floor No. 903-904, Serm-Mit Tower
Building, 159/14 Soi Asoke. Sukhumvit
21 Road, North Klongtoey, Wattana,
Bangkok 10110 Thailand

Telephone No.

66-2-260-8651-4

Fax No.

66-2-260-8460

President

Mr. Takao Ono

Managing Director

Mr. Daiki Hayashi

Established Date

September 17, 1990

Registered Capital

Baht 6,000,000

Web site

<https://www.fujichemithai.com>

OUR GLOBAL NETWORK

WE HAVE AN OVERSEAS AGENCY IN HONG KONG AND THAILAND

WAREHOUSE IN SHENZHEN AND KUALA LUMPUR. WE HAVE A WIDE NETWORK IN JAPAN AND OVERSEAS.



FUJI CHEMI TRADING CO., LTD

FUJI TRADING SHANGHAI CO., LTD



FUJI CHEMI VIETNAM CO., LTD.



SSK VIET NAM CO., LTD.

★ FUJI CHEMI CO.,LTD.



FUJICHEMI HI-TECH (THAILAND) CO.,LTD.



Our Strengths

**TECHNICAL MATERIAL SOURCING,
SUPPLY-CHAIN OPTIMIZATION, AND
PRECISE IMPORT-EXPORT DELIVERY.**

SUPPORTING ELECTRONICS
(FPC/PCB/ASSEMBLY), AUTOMOTIVE,
APPLIANCES, AND CONSTRUCTION INDUSTRIES.



**Strong supply
network with
material
manufacturers**

SOLID
ACHIEVEMENT
HISTORY OVER 70
YEARS IN JAPAN
AND OVER 30
YEARS IN
THAILAND



**Best Product
and Solution**

BROAD RANGE OF
PRODUCTS
CONVERSION AND
PROCESSING.



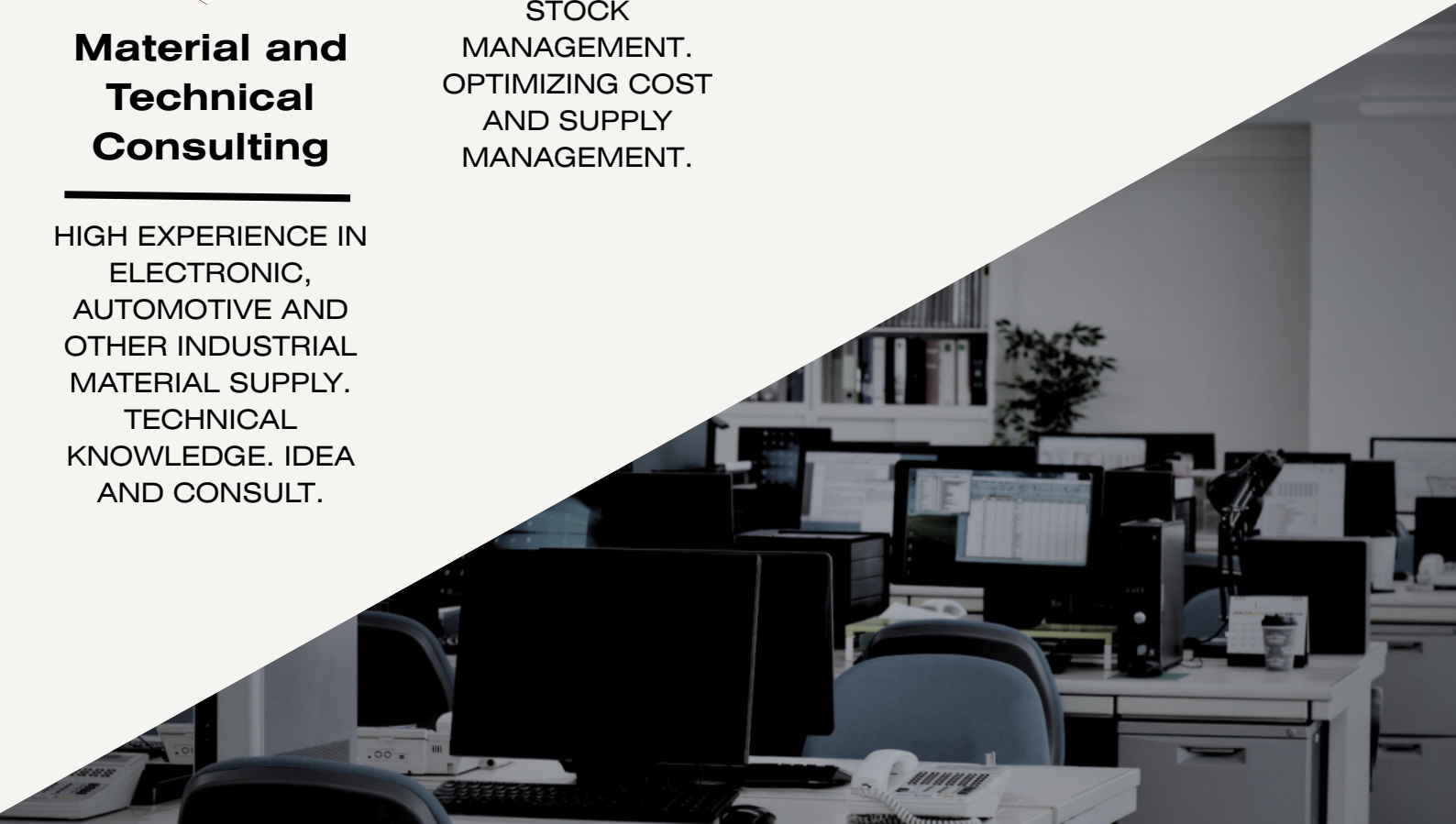
LOGISTICS

HIGH EXPERIENCE IN
LOGISTICS AND
STOCK
MANAGEMENT.
OPTIMIZING COST
AND SUPPLY
MANAGEMENT.



**Material and
Technical
Consulting**

HIGH EXPERIENCE IN
ELECTRONIC,
AUTOMOTIVE AND
OTHER INDUSTRIAL
MATERIAL SUPPLY.
TECHNICAL
KNOWLEDGE. IDEA
AND CONSULT.



Our Business

OUR ELECTRONICS MATERIALS DIVISION IS A LEADING TRADING COMPANY SPECIALIZING IN ADVANCED ELECTRONIC MATERIALS.



Sheet and film Materials
High-performance films and sheets for industrial use



Plastic and polymer
Quality materials for molding and manufacturing



Lubricant, Adhesive
Professional-grade industrial solutions



Construction materials
Reliable supplies for construction needs



Industrial consumable
Essential products for daily operations



Material conversion
Specialized processing services



Machine and Automation
Advanced systems and solutions



Lifestyle products
Quality solutions for everyday needs



Our Main Product

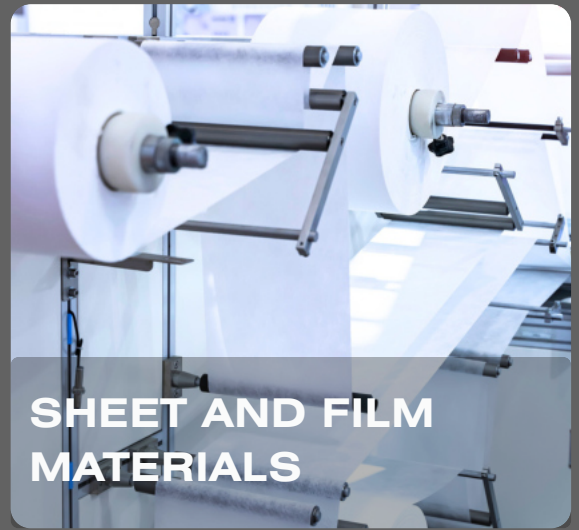
PLASTIC PELLET
AND COMPOUND



LUBRICANT
ADHESIVE
SOLVENT



SHEET AND FILM
MATERIALS

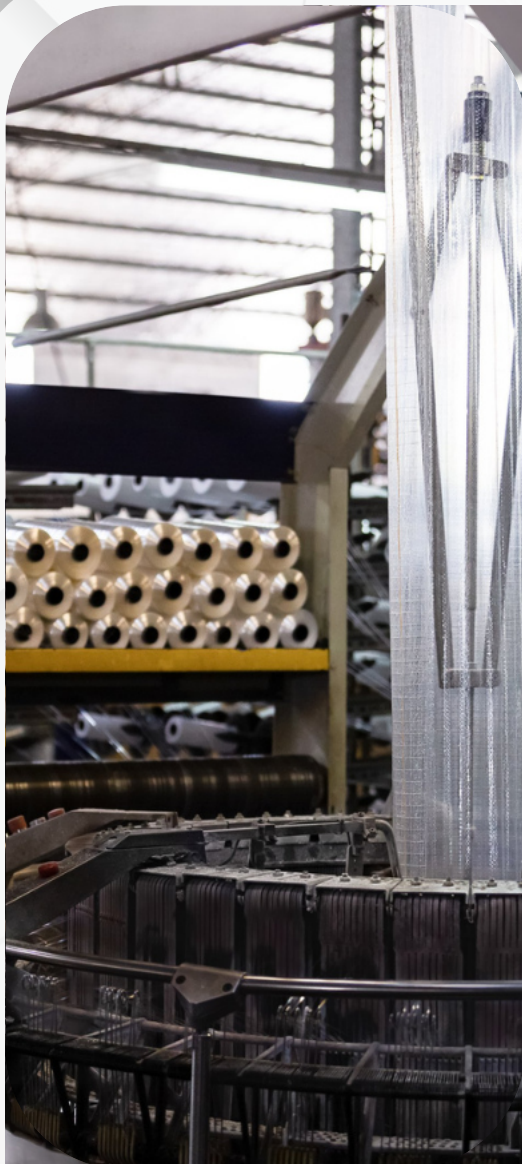


Our Product

SHEET AND FILM MATERIALS

PLASTIC SHEETS SINGLE-LAYER
LAMINATED, AND COATED
OPTIONS TO SUIT YOUR NEEDS

PET FILM
PE FILM
PP FILM
NYLON FILM
POLYIMIDE FILM
A-PET / LAMINATED FILM
CHARGING TAPE



COVER TAPE



HOTMELT SHEET



CARRIER TAPE



CUSHION FILM



ADHESIVE TAPE



ACF
THERMOPLASTIC ANISOTROPIC
CONDUCTIVE FILM

PLASTIC PELLET

WE OFFER HIGH-QUALITY
PLASTIC RAW MATERIALS FOR
INJECTION AND EXTRUSION
MOLDING.

GENERAL TYPE

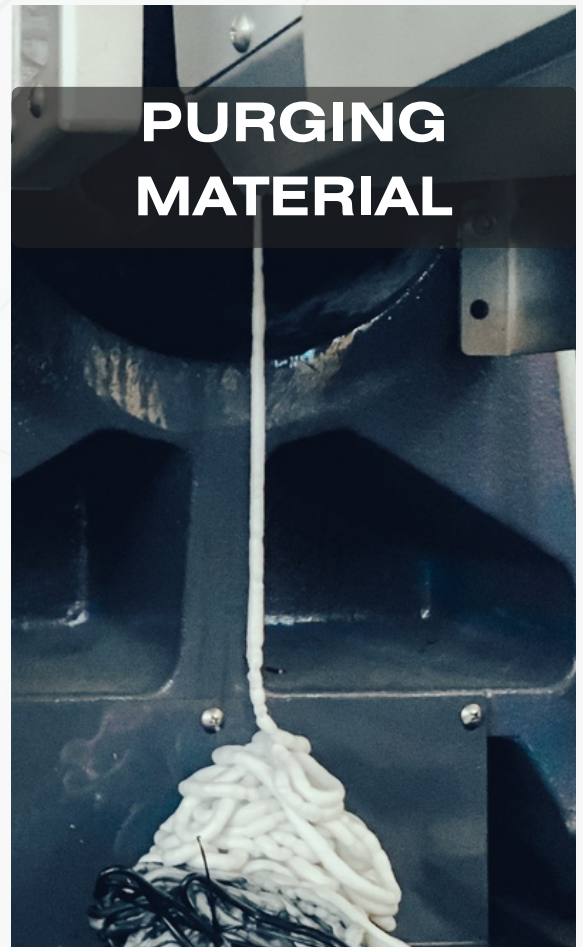
- PE
- PP
- PVC
- PS
- PET

ENGINEERING PLASTICS

- PC • PA • PVDF
- ABS • PETG

ENVIRONMENT FRIENDLY

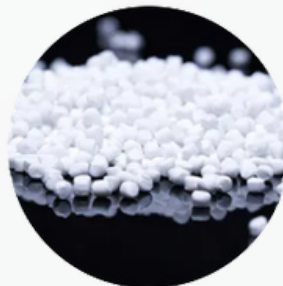
- PU
- PLA



MASTER BATCH AND FILLER



**COLOR MASTER
BATCH**



**CALCIUM
MASTER BATCH**



**TALCUM
MASTER BATCH**

HIGH PERFORMANCE LUBRICANT



DRYSURF QUICK-DRYING LUBRICANTS

- WIDE RANGE OF APPLICATION
- EASINESS OF APPLICATION
- EXCELLENT DURABILITY
- EXTENSIVE PRODUCT LINE
- HIGHLY SAFE

QUICK-DRYING LUBRICANT THAT DRIES INSTANTLY AFTER APPLICATION, LEAVING A THIN AND UNIFORM LUBRICATING FILM



HI-LUBE HIGH-PERFORMANCE GREASE

- WIDE RANGE OF APPLICATION
- WIDE TEMPERATURE RANGE OF APPLICATION
- EXCELLENT DURABILITY
- EXTENSIVE PRODUCT LINE

HIGH-PERFORMANCE GREASE FOR ELECTRONIC DEVICES, PRECISION INSTRUMENTS, AND AUTOMOTIVE PARTS



DURASURF FLUORINATED COATING

- HIGH-PERFORMANCE, THIN LAYER
- SHORTENING THE OPERATION TIME
- HIGHLY SAFE
- EXTENSIVE PRODUCT LINE

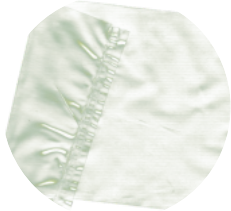
HIGHLY FUNCTIONAL, FAST-DRYING INDUSTRIAL FLUORINE COATING AGENT

CONSUMABLE PRODUCT

FOR DAILY OPERATIONS, MAINTENANCE, AND SAFETY.



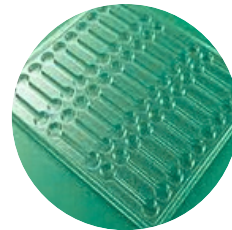
GLOVE



BAG



SILICA GEL



TRAY



MASK



CARTON BOX



PAPER CORE



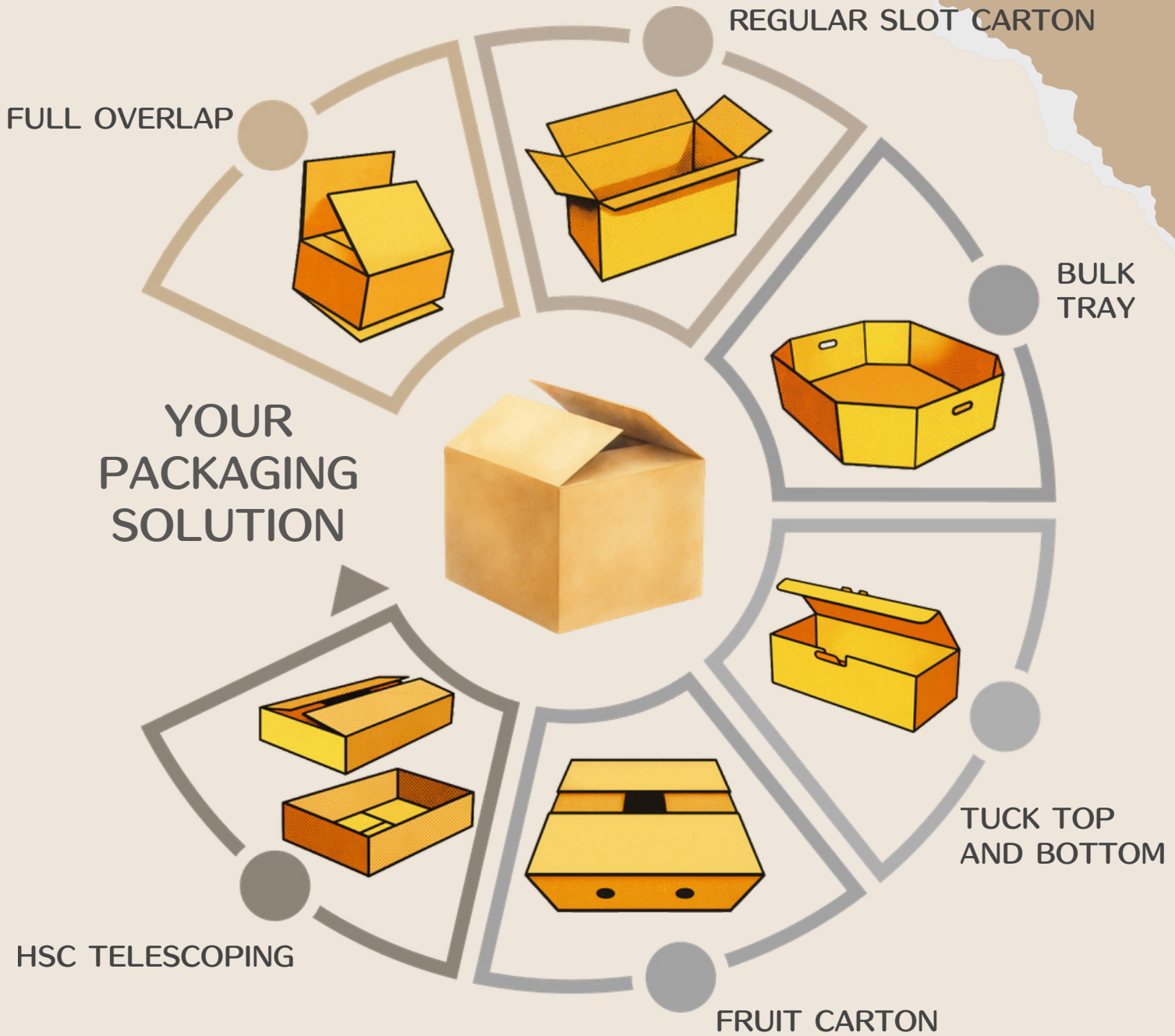
PAPER PALLET



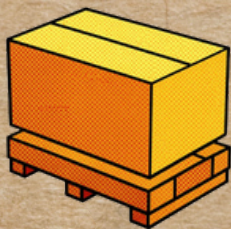
FSC PAPER



YOUR PACKAGING AND PAPER



CARRIER BOX



BULK BOX ON PALLET



CORRUGATED PAD



PAPER PALLET

01

choose
Material

02

Size and
Dimension

03

Provide
Quotaion

Kraft: KA

(Weight: 125, 150, 185,230 gram/m2)

Kraft: KL or KH

(Weight: 125, 150, 175, 205 gram/m2)

Kraft: KI

(Weight: 125, 150, 185 gram/m2)

Kraft: KS or KW

(Weight: 140, 170 gram/m2)

Kraft: CA or M

(Weight: 105, 125, 150, 185 g/m2)

KRAFT LINER SPECIFICATION AND USAGE

- KA – Strong, moisture-resistant kraft for heavy and frozen/export products.
- KL/KH – Natural, eco-friendly kraft widely used for export packaging.
- KI – Light kraft suitable for printing and lighter consumer goods.
- KS/KW – White, strong kraft for premium packaging with standout printing.
- CA/M – Low-cost kraft for flute/inner liner, partitions, and pads.

TYPE OF CORRUGATED BOARD

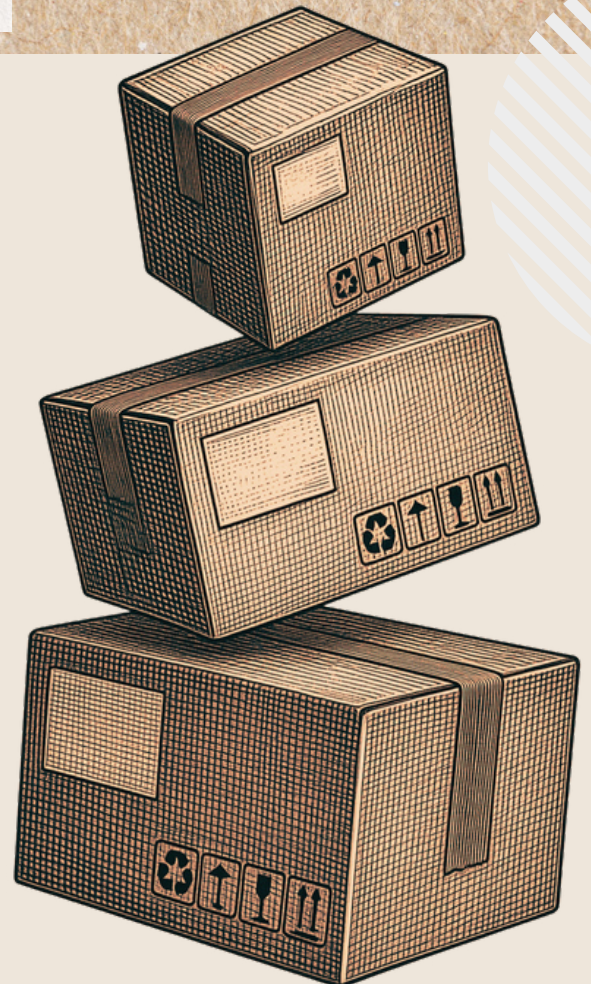
Single face corrugated



Single wall corrugated board



Double wall corrugated board (BC flute)



A bite for your
relaxing time after work

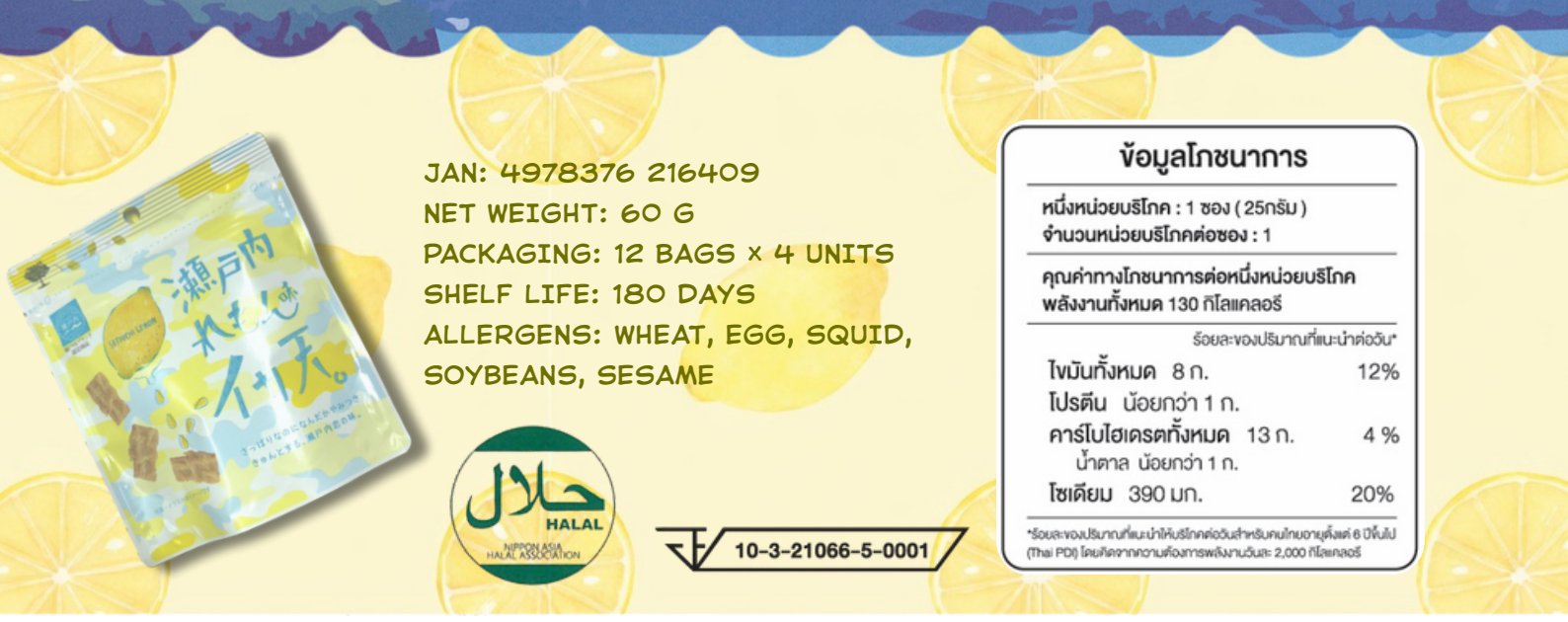
IKATENLEMON

MARUKA IKATEN FRIED SQUID SETOUCHI LEMON

ORIGINATING

FROM THE SETOUCHI AREA,
KNOWN FOR ITS CITRUS AND
FRESH SEAFOOD

THESE CRISPY TREATS BLEND
BRIGHT CITRUS ZEST WITH
RICH, SAVORY SEAFOOD
FLAVOR.



JAN: 4978376 216409
NET WEIGHT: 60 G
PACKAGING: 12 BAGS x 4 UNITS
SHELF LIFE: 180 DAYS
ALLERGENS: WHEAT, EGG, SQUID,
SOYBEANS, SESAME



10-3-21066-5-0001

ข้อมูลโภชนาการ

หนึ่งหน่วยบริโภค : 1 ซอง (25กรัม)
จำนวนหน่วยบริโภคต่อซอง : 1

คุณค่าทางโภชนาการต่อหนึ่งหน่วยบริโภค
พลังงานทั้งหมด 130 กิโลแคลอรี

ร้อยละของปริมาณที่แนะนำให้บริโภคต่อวัน*

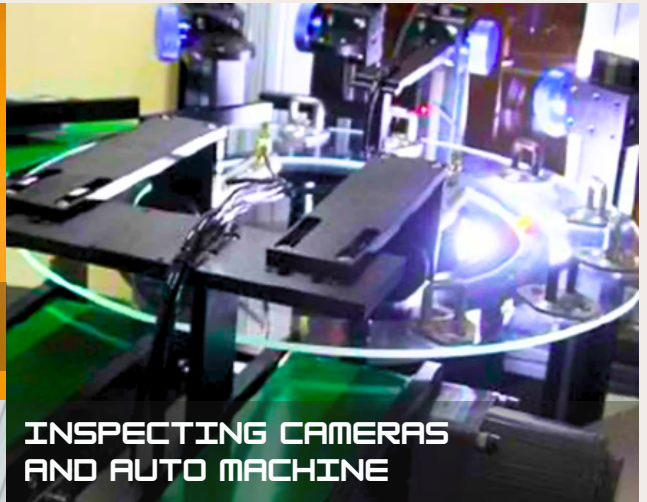
ไขมันทั้งหมด 8 ก.	12%
โปรตีน น้อยกว่า 1 ก.	
คาร์โบไฮเดรตทั้งหมด 13 ก.	4%
น้ำตาล น้อยกว่า 1 ก.	
โซเดียม 390 มก.	20%

*ร้อยละของปริมาณที่แนะนำให้บริโภคต่อวันสำหรับคนโตอายุตั้งแต่ 6 ปีขึ้นไป (Thai PD) โดยคิดจากค่าความต้องการพลังงานวันละ 2,000 กิโลแคลอรี

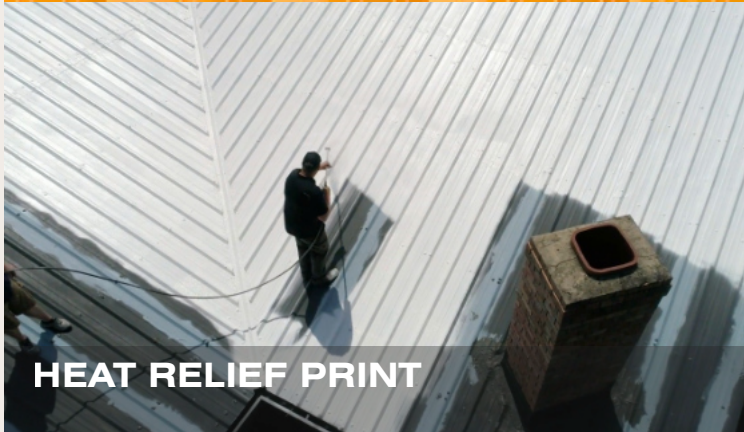
Other Project



STRIP CURTAIN



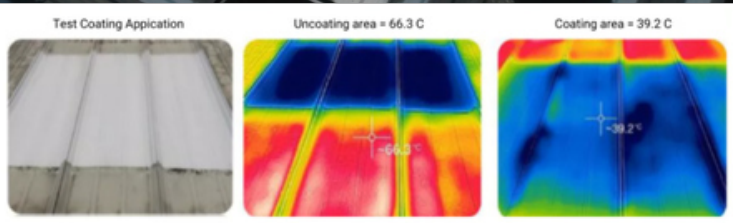
INSPECTING CAMERAS AND AUTO MACHINE



HEAT RELIEF PRINT



SLITTING SERVICE



Our Customer