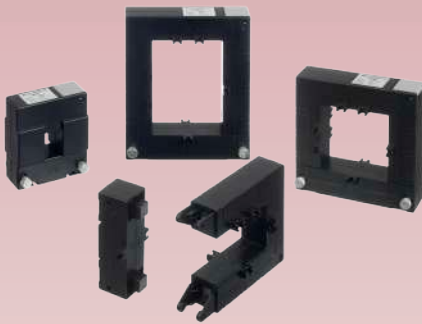




DP Series Current Transformers



Models Available

- DP-23** Split Core Current Transformer
- DP-58** Split Core Current Transformer
- DP-88** Split Core Current Transformer
- DP-812** Split Core Current Transformer
- DP-816** Split Core Current Transformer

Product Features

- Split core ideal for retro-fitting
- Moulded ABS plastic housing
- 5 Amp secondary
- Accuracy class 0.5
- Mounting feet
- Screw type terminals
- Terminal cover included
- Busbar clamp kit included

DP split core current transformers are available for primary currents between 100 Amps and 5000 Amps, offering reliability and class 0.5 making them suitable for a large range of industrial applications.

The DP series current transformers are available in five different physical sizes all with a rectangular aperture and due to their split core design are ideal for retro-fitting. They are enclosed in a protective ABS housing ensuring excellent mechanical strength and electrical insulation.

The DP series current transformers have fixing feet, a busbar clamp kit and terminal cover as standard.

For transforming high AC current to a proportional 5 Amp output

Specification

Reference Standard:

- IEC185, UNE EN 60044-1, VDE0414

Accuracy:

- See range data table

Primary Input Current:

- 0-100A to 0-5000A (see data table)

Secondary Current:

- 0-5A (0-1A by special order)

Overload:

- To BS3938 - IEC 185

Operating Voltage:

- 720Vac maximum

Test Voltage:

- 3kV rms 50Hz for 1 minute

Frequency:

- 50/60Hz

Burden:

- See range data table

Enclosure:

- Self extinguishing to UL94V0
- Busbar mounting with clamp
- M5 screw terminals
- IP40 enclosure code
- Insulation class E

Operating Temperature:

- -10°C to 50°C

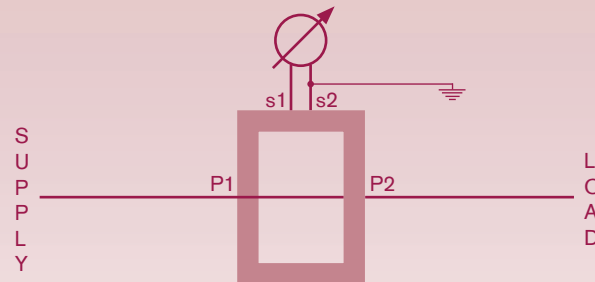
Weight:

- See range data table

Markings:

- CE marked

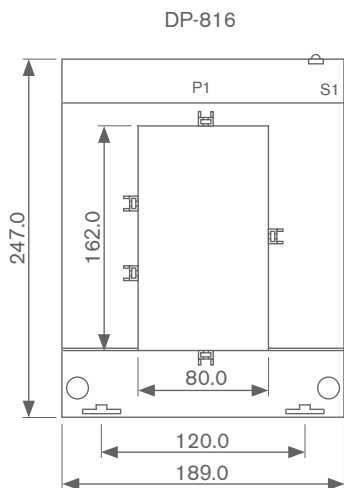
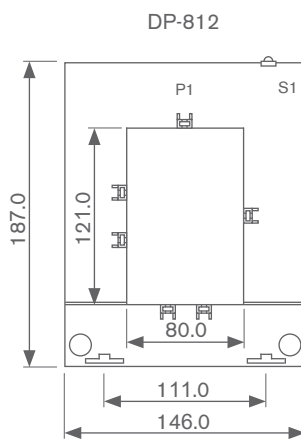
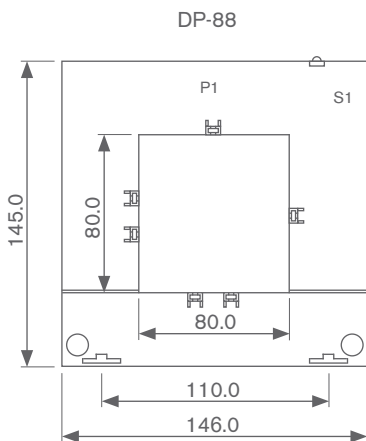
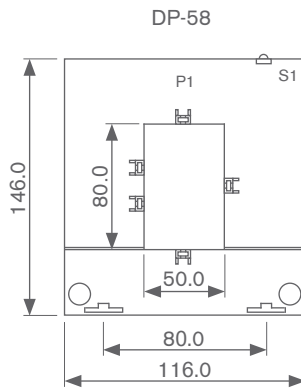
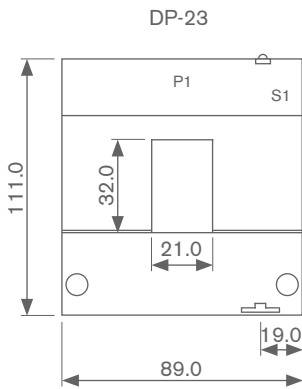
Connections



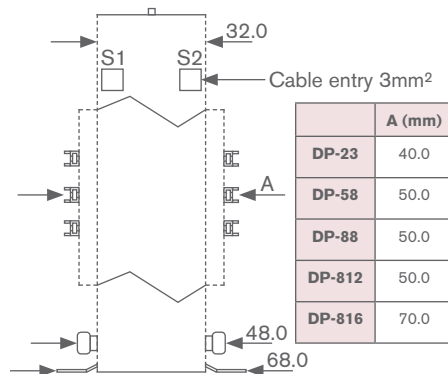
Ordering information

| Code | Model & Size | Ratio |
|----------------|--|-------------------------|
| DP-23 | Split Core CT | 100/5 |
| DP-58 | Split Core CT 200/5 , 300/5 , 400/5, 500/5, 600/5, 800/5, 1000/5, 1500/5 | |
| DP-88 | Split Core CT | 1000/5 |
| DP-812 | Split Core CT | 1000/5, 15000/5, 2000/5 |
| DP-816 | Split Core CT | 3000/5, 4000/5, 5000/5 |
| Example | DP-812 | 2000/5 |

Dimensions



Terminal Arrangement (All Sizes)



All dimensions in mm.

Range Data

| Model | Primary Current (Amps) | Accuracy Class | Burden (VA) | Weight (grams) |
|----------------------|------------------------|----------------|-------------|----------------|
| DP-23-100/5 | 100 | 0.5 | 1.5 | 750 |
| DP-58-200/5 | 200 | 0.5 | 2.5 | 900 |
| DP-58-300/5 | 300 | 0.5 | 2.5 | 900 |
| DP-58-400/5 | 400 | 0.5 | 2.5 | 900 |
| DP-58-500/5 | 500 | 0.5 | 2.5 | 900 |
| DP-58-600/5 | 600 | 0.5 | 2.5 | 900 |
| DP-58-800/5 | 800 | 0.5 | 5 | 900 |
| DP-58-1000/5 | 1000 | 0.5 | 5 | 900 |
| DP-58-1500/5 | 1500 | 0.5 | 5 | 900 |
| DP-88-1000/5 | 1000 | 0.5 | 5 | 1050 |
| DP-812-1000/5 | 1000 | 0.5 | 5 | 1250 |
| DP-812-1500/5 | 1500 | 0.5 | 7.5 | 1250 |
| DP-812-2000/5 | 2000 | 0.5 | 10 | 1250 |
| DP-816-3000/5 | 3000 | 0.5 | 20 | 4300 |
| DP-816-4000/5 | 4000 | 0.5 | 20 | 4300 |
| DP-816-5000/5 | 5000 | 0.5 | 20 | 4300 |