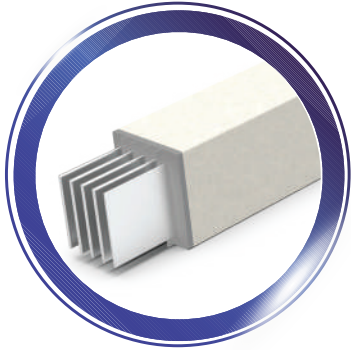


## Outdoor Application



**CR Busduct**

Furutec Cast Resin busduct is engineered to distribute power in outdoor & harsh environments without compromising its electrical performance.

- Compliant with IEC 61439-6, JIS C8364, CNS 14286
- Mineral-insulated Cast Resin Type
- Excellent Heat Dissipation
- Resistant to Water, Fire & Corrosion
- Seismic Zone 4 Protection
- IK10 Mechanical Impact
- Complete IP68

