

# **FURUTEC<sup>®</sup>**

Busduct System



**Unlocking Busduct Innovation :**  
Your Path To Quality, Reliability & Efficiency

## Company Overview

Since its inception in 1995 in Penang, Malaysia, Furutec Electrical has been at the forefront of innovation in busduct system manufacturing. With over 30 years of expertise in manufacturing, research and development, Furutec offers a comprehensive range of busduct systems tailored for diverse applications and industries.

Our relentless commitment to excellence is powered by significant investments in R&D and state-of-the-art testing facilities, ensuring every product meets and exceeds international standards. Partnering with regional distributors and business partners, we are proud to bring innovative, reliable, and sustainable power distribution systems to the world.



### MANUFACTURER'S EXPERIENCE

More than 30 years of experience in the manufacturing and R&D of busduct systems in Malaysia

### PRODUCT CREDENTIALS

Type-tested & certified by reputable certification bodies in compliance with various international standards

### PRODUCT SOLUTIONS

Providing a comprehensive range of busduct systems tailored to diverse applications & market segments

### MARKET PRESENCE

ASEAN, Asia Pacific, Middle East and beyond

## Product Overview

Furutec specializes in delivering scalable, reliable and industry-leading busduct systems that ensure safe and efficient power distribution. Leveraging cutting-edge technology and a commitment to future-proofing, Furutec busduct solutions deliver unmatched reliability and safety to power your projects.

1

Cast resin busduct for outdoor and harsh environment

2

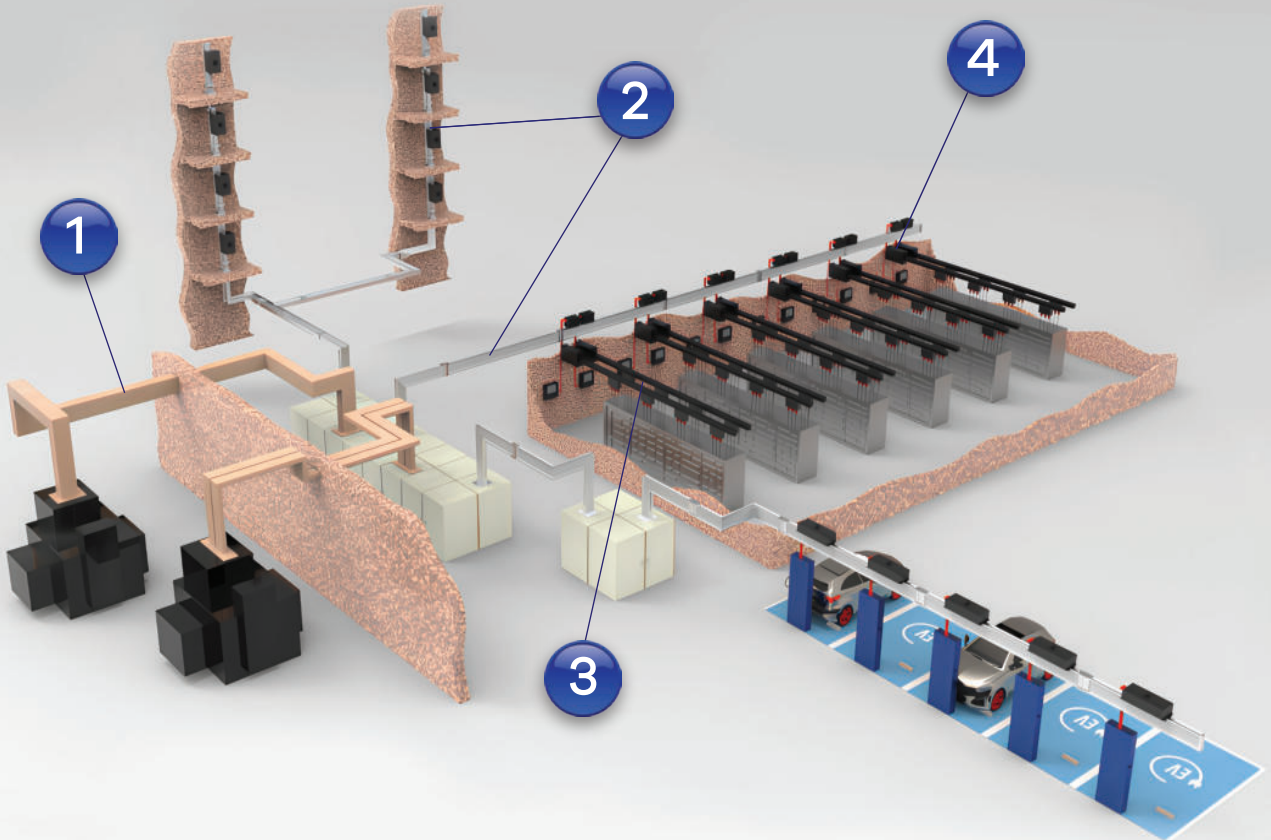
Compact sandwich busduct for indoor installation

3

Data centre busduct for data hall application

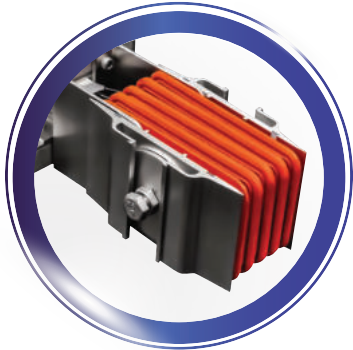
4

Branch Circuit Power Monitoring System (BCPM) for real-time monitoring and data analysis





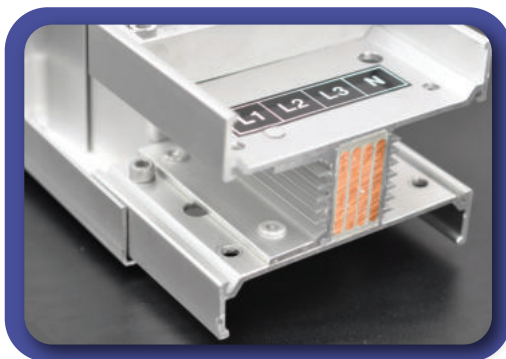
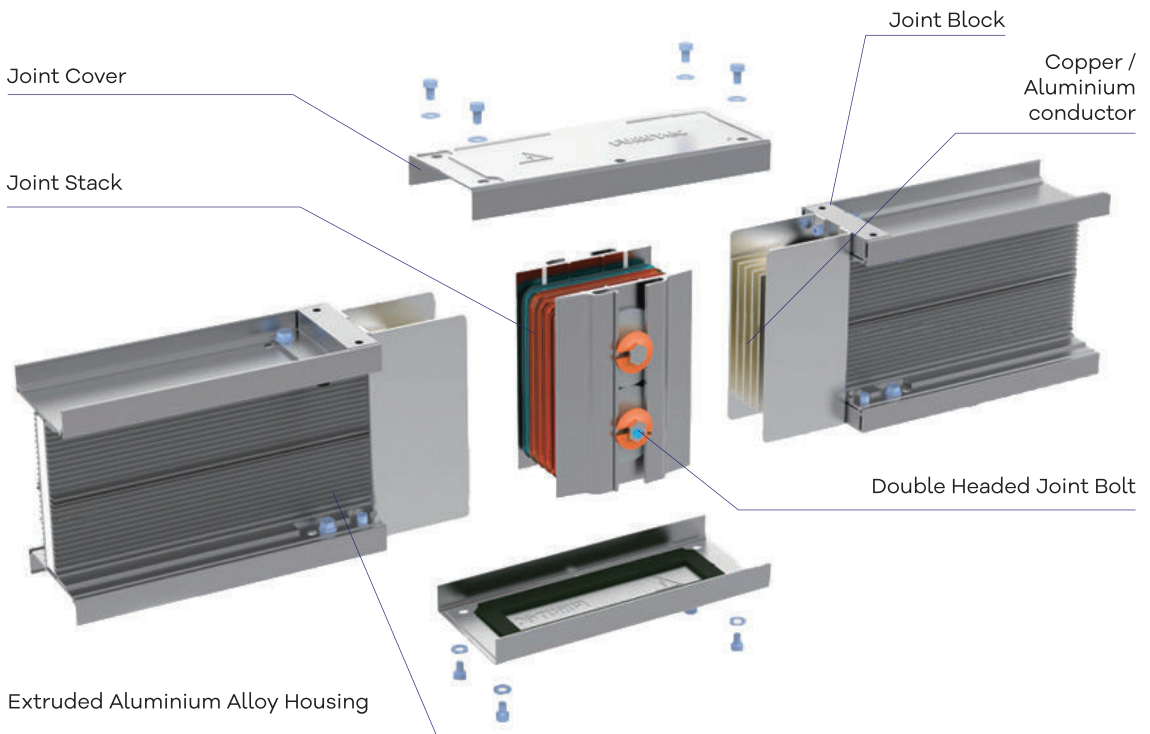
## Indoor Application



**AH & AH-ES Busduct**

Furutec Compact Sandwich busduct is designed for indoor application.

- Compliant with IEC 61439-6 & UL 857
- Compact Sandwich Construction
- Extruded Aluminium Alloy Housing
- Corrosion Resistant
- Excellent Heat Dissipation
- 100% Housing Ground System
- Seismic Zone 4 Protection
- IK10 Mechanical Impact
- Complete IP65



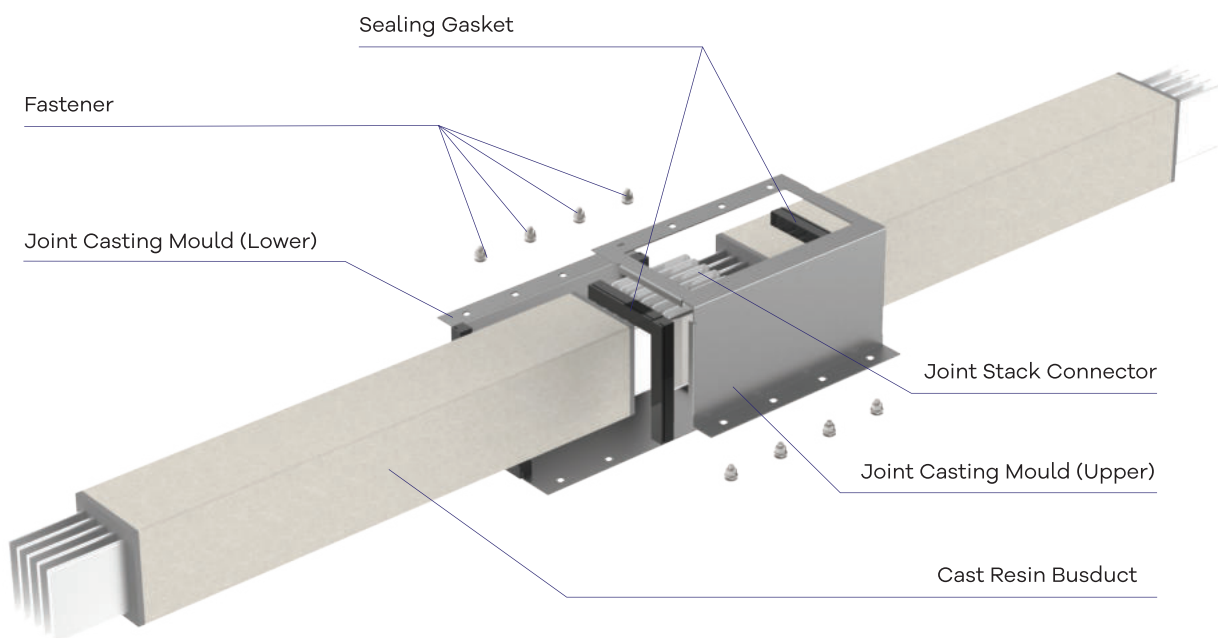
## Outdoor Application



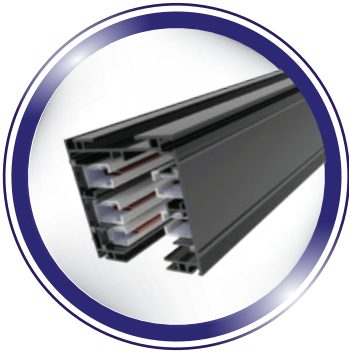
**CR Busduct**

Furutec Cast Resin busduct is engineered to distribute power in outdoor & harsh environments without compromising its electrical performance.

- Compliant with IEC 61439-6, JIS C8364, CNS 14286
- Mineral-insulated Cast Resin Type
- Excellent Heat Dissipation
- Resistant to Water, Fire & Corrosion
- Seismic Zone 4 Protection
- IK10 Mechanical Impact
- Complete IP68



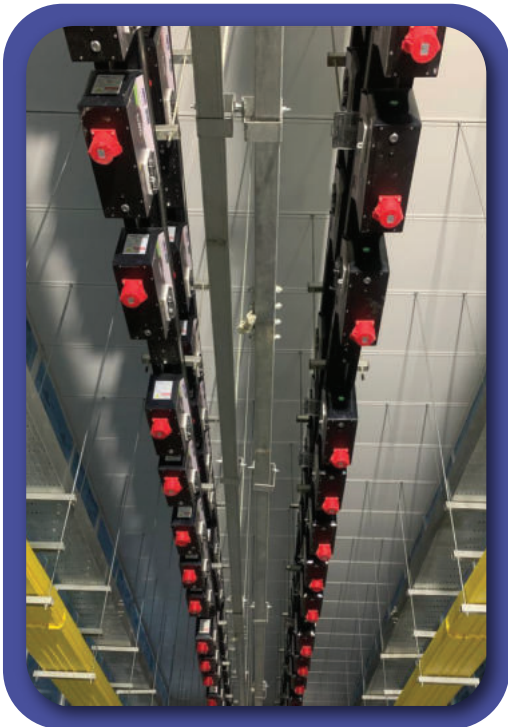
## Data Centre Application



Furutec i-DC busduct is engineered to meet the stringent technical specification and requirement in mission-critical data centres.

It ensures reliable and uninterrupted service while reducing environmental impact by minimizing cabling and waste commonly associated with conventional retrofits.

- Compliant with IEC 61439-6
- Space-Efficient Modular & Compact Design
- Flexibility & Scalability for Future Expansion
- Quick Installation & Lower Installation Cost
- Maintenance-Free
- Eco-Friendly & Reusable
- Customizable Tap Off Units
- Safe Live Installation of Tap Off Units
- Integrated with Branch Circuit Power Monitoring



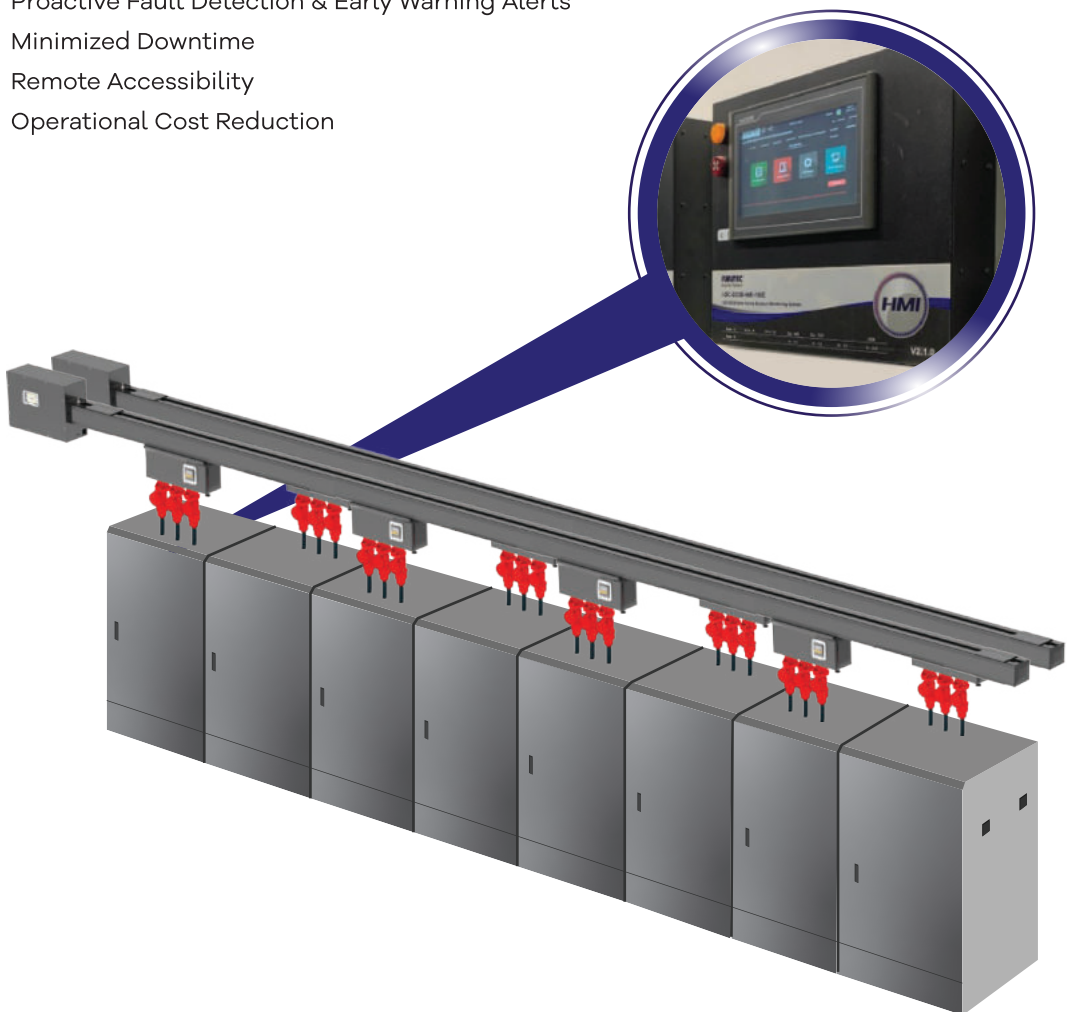
# Power Monitoring Solution

Furutec busduct system integrated with cutting-edge power monitoring solution delivers an advanced, seamless and intelligent approach to power distribution and management, aligning with the needs of mission-critical data centres.

This system enables real-time monitoring of critical electrical parameters, including voltage, current, power factor and energy consumption. By providing actionable insights into energy usage and identifying potential issues before they escalate, it significantly enhances operational efficiency.

Moreover, the integration boosts system safety, minimizes the risk of failures, and helps prevent costly downtimes, ensuring uninterrupted performance in mission-critical environments and applications.

- Intuitive & User-friendly Interface
- Scalability & Customization
- Seamless Integration with BMS
- Real-time Monitoring and Data Analysis
- Proactive Fault Detection & Early Warning Alerts
- Minimized Downtime
- Remote Accessibility
- Operational Cost Reduction



## Why Choose Us ?



### **CRITICAL POWER DISTRIBUTION**

Experienced in the stringent requirements of data centre



### **SAFETY PROTECTION**

Degree of protection (IP65, IP66, IP67 & IP68) and Mechanical Impact (IK10)



### **PRODUCT CERTIFICATION**

Compliance with IEC 61439-6 and UL857, UL Listed and KEMA KEUR



### **SUSTAINABILITY**

Committed to ESG and Contribution to UN SDGs



### **ENVIRONMENT PROTECTION**

Certified by Singapore Green Building Council (SGBC) & Malaysia Sirim Eco Label



### **EARTHQUAKE PROTECTION**

Compliance with UBC Seismic Zone 4



### **FIRE SAFETY**

Compliance with CNS14286, JIS C8364, BS6387, IEC60331, SS299, etc



### **EXTREME TEMPERATURE**

Tested to higher ambient temperature of 50°C



### **COMMITMENT**

Compliance with ISO 9001 & commitment to Product Quality and Reliability

**FURUTEC®**  
Busduct System

#### **SALES & MARKETING OFFICE:**

LOT 4, BLOCK A, JALAN SS 13/7,  
SUBANG JAYA INDUSTRIAL ESTATE,  
47500 SUBANG JAYA,  
SELANGOR, MALAYSIA

#### **MANUFACTURING PLANT:**

PLOT 89, LORONG PERINDUSTRIAN BUKIT MINYAK 11,  
KAWASAN PERINDUSTRIAN BUKIT MINYAK,  
MK 13, 14100 SEBERANG PERAI TENGAH,  
PENANG, MALAYSIA

TEL: +603-56357088

EMAIL: furutec@eita.com.my

Company No: 198001003423(57207-W)

