

WISENET

**HEAD OFFICE**

6, Pangyo-ro 319beon-gil, Bundang-gu, Seongnam-si,  
Gyeonggi-do, 463-400 Rep. of KOREA  
Tel : +82.70.7147.8753 Fax : +82.31.8018.3740  
<http://hanwha-security.com>

**Hanwha Techwin America**

500 Frank W. Burr Blvd. Suite 43 Teaneck, NJ 07666  
Toll Free : +1.877.213.1222  
[www.hanwhasecurity.com](http://www.hanwhasecurity.com)

**Hanwha Techwin Europe**

Heriot House, Heriot Road, Chertsey, Surrey, KT16 9DT. UK  
Tel : +44.1932.578.100  
[www.hanwha-security.eu](http://www.hanwha-security.eu)

**Hanwha Techwin Tianjin**

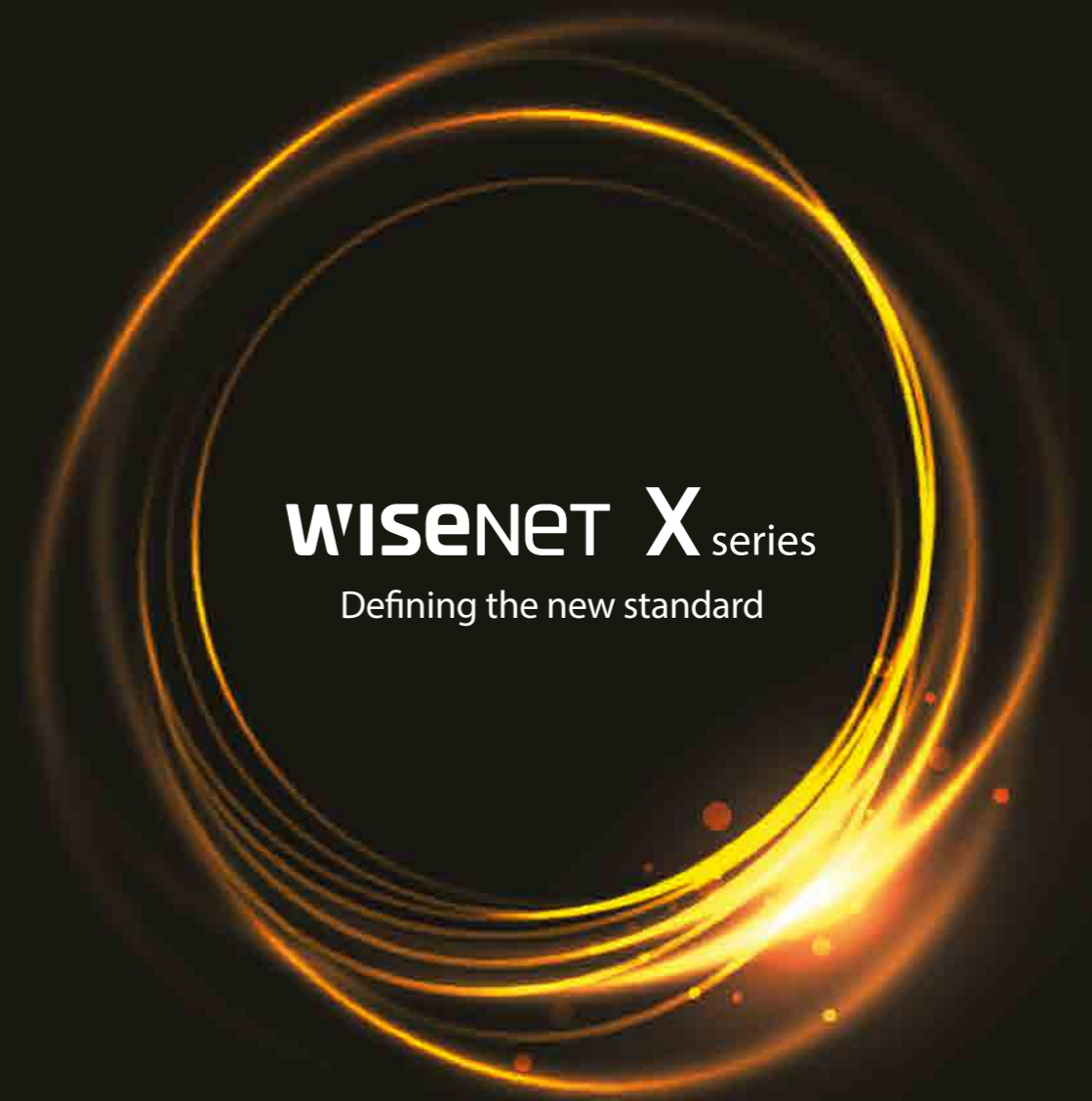
No.11 Weiliu Rd., Micro-electronic Industrial Park,  
Jingang Road Tianjin 300385, China  
Tel : +86-22-2388-7788 (8700)  
[www.hanwha-security.cn](http://www.hanwha-security.cn)

**Hanwha Techwin Middle East FZE**

JAFZA View 18, 20th floor, office 2001, 2002, 2003, Downtown Jebel Ali,  
Dubai, United Arab Emirates  
<http://hanwha-security.com>

© 2018 Hanwha Techwin Co., Ltd. All rights reserved.

DESIGN AND SPECIFICATIONS ARE SUBJECT TO CHANGE WITHOUT NOTICE  
Under no circumstances, this document shall be reproduced, distributed or changed,  
partially or wholly, without formal authorization of Hanwha Techwin Co., Ltd.



# THE MOST POWERFUL CHIPSET Wisenet 5



**WISENET X** series

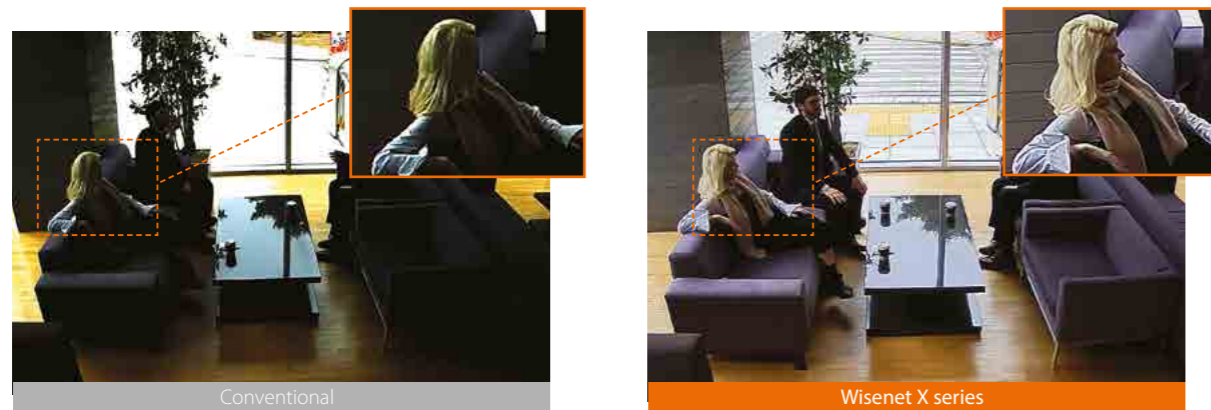


Wisenet X series is supercharged by the most powerful  
chipset ever incorporated into a full camera range.  
The Wisenet 5 chip uses an all-new architecture that enables faster processing.  
That means you get the best video performance just as you need it.

## The world's best WDR performance(150dB)



Conventional WDR captures images by taking 2 frames taken at different exposures, whereas Wisenet X series cameras utilize 4 frame capture at different exposure levels to create a combined image. With the development of cutting-edge WDR technology, Wisenet X series cameras address a limitation found in conventional WDR cameras while producing clear and vivid images.



※ 150dB WDR only available in 2MP X series

## extraLUX provides clearer, sharper and colored image even in low light environments



With the powerful Wisenet 5 chipset and processing technology, Wisenet X series achieves optimal performance in low-light conditions by capturing and producing crystal-clear images including true-color images without IR LEDs, regardless of the environment or time of day. To extend the excellence of Wisenet X series, the new launched extraLUX series is featured with 1/2" CMOS sensor which brings much improved quality making image clearer and sharper. Particularly, XND-6085(V), XNV-6085 and XNO-6085R took F0.94 lens together with 1/2" CMOS sensor which makes it possible to offer clear and colored image in low light environment.



## Digital Image Stabilization(DIS) with built-in Gyro sensor

Advances in Wisenet image stabilization technology allow for the reduction of motion blur caused by wind or vibration. A gyroscopic sensor plus DIS technology is specifically designed and engineered into select Wisenet X series cameras resulting in sharp, stable images.



## Improve bandwidth by up to 99% using WiseStream II

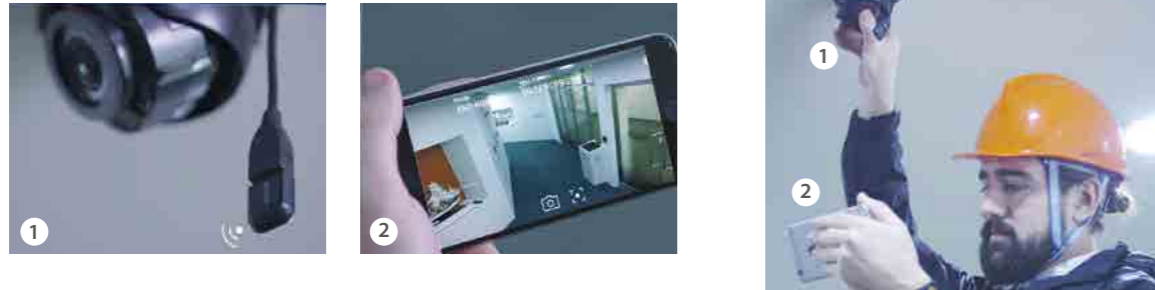
Using WiseStream II, Hanwha Techwin's original video compression technology, the Wisenet X series reduces data by up to 99% compared to current H.264 technology, when combined with H.265 compression. System costs are also greatly reduced without comprising image quality.





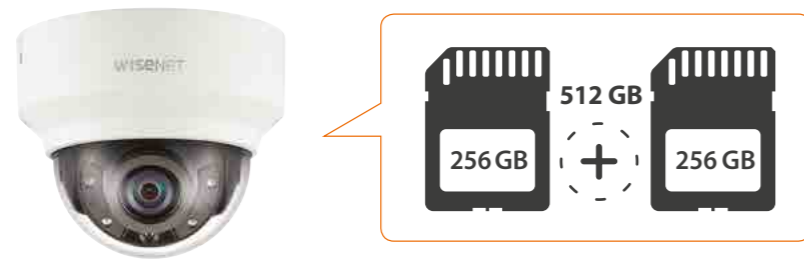
## More convenient installation with USB

Wisenet X series can connect cameras and mobile devices through USB and Wi-Fi. View angles can be checked immediately after installation using a smartphone. No additional devices are required, saving you time and money.



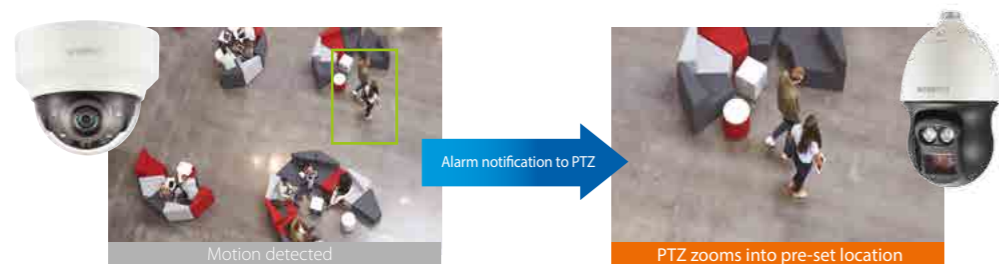
## Dual SD slots

Dual SD slots allow up to 512 GB to be saved automatically to the camera, keeping data safe in the event of an unstable network. Obviously this allows to record more video footage than single SD slot.



## Handover to PTZ

The handover feature allows a PTZ camera\* to receive an alarm(motion detection) from Wisenet X series camera operating on the same IP video surveillance system. Once the notification is received, the PTZ camera will zoom into the assigned camera pre-set location. This feature improves the efficiency of the surveillance system by decreasing the reliance on the system operator on tracking events, and by increasing the likelihood that critical events in a surveillance area will be captured and recorded. \*PNP-9200RH / XNP-6370RH



## Fog Detection

Wisenet X series delivers outstanding image quality in foggy weather with Fog Detection. Any change in an image is automatically deleted with the defog function to provide a clear image.



## Enhanced Video / Audio Analytics

Wisenet X series support a variety of exclusive Video and Audio Analytics, providing enhanced monitoring solutions and market intelligence.

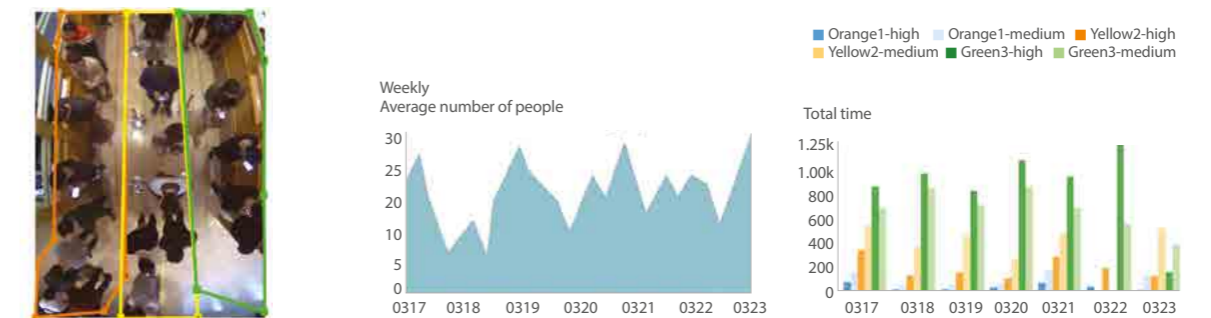
### Loitering detection

This feature detects when an object remain in a designated area longer than the time threshold set by user.



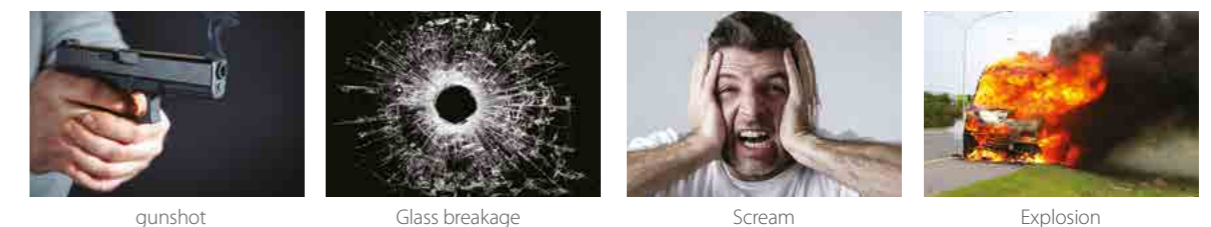
### Queue management

This feature provides statistical analysis and measurement for average dwell time and number of people in queues. This insight is critical for business to manage their operations more efficiently, while providing the insight necessary to manage campaigns, displays and promotions throughout retail locations.



### Sound classification

Wisenet X series camera help user respond immediately in case of situation in danger, so that can classify sound such as gunshot, glass breakage, scream and explosion.



# Product comparison



**Wisenet X  
XNB-8000**



**Wisenet X  
XNO-8080R**



**Wisenet X  
XNO-8020R/8030R/8040R**



**Wisenet X  
XND-8080R/8080RV**

	5MP	5MP	5MP	5MP
<b>Resolution</b>	5MP	5MP	5MP	5MP
<b>Imaging Device</b>	1/1.8" 6M CMOS	1/1.8" 6M CMOS	1/1.8" 6M CMOS	1/1.8" 6M CMOS
<b>Video Compression Format</b>	H.265, H.264, MJPEG	H.265, H.264, MJPEG	H.265, H.264, MJPEG	H.265, H.264, MJPEG
<b>Resolution / Max. Frame Rate</b>	5M / 30fps	5M / 30fps	5M / 30fps	5M / 30fps
<b>Streaming Capacity</b>	Multiple (Up to 10 Profiles)	Multiple (Up to 10 Profiles)	Multiple (Up to 10 Profiles)	Multiple (Up to 10 Profiles)
<b>Max. User Access</b>	20 (Unicast)	20 (Unicast)	20 (Unicast)	20 (Unicast)
<b>Min. Illumination</b>	Color: 0.07Lux B/W: 0.007Lux	Color: 0.07Lux B/W: 0Lux (IR LED on)	Color: 0.16Lux B/W: 0Lux (IR LED on)	Color: 0.07Lux B/W: 0Lux (IR LED on)
<b>Video Output</b>	CVBS 1.0Vpp, Micro USB type B	CVBS 1.0Vpp, Micro USB type B	CVBS 1.0Vpp, Micro USB type B	CVBS 1.0Vpp, Micro USB type B
<b>Lens</b>	-	3.7 ~ 9.4mm (2.5x) motorized V/F (F1.2)	3.7mm fixed (F1.6) (XNO-8020R) 4.6mm fixed (F1.6) (XNO-8030R) 7.0mm fixed (F1.6) (XNO-8040R)	3.9 ~ 9.4mm (2.4x) motorized V/F (F1.3)
<b>Angular Field of View</b>	-	H: 100.2°(Wide) ~ 38.7°(Tele) / V: 72.7°(Wide) ~ 29.0°(Tele) / D: 132.0°(Wide) ~ 48.6°(Tele)	H: 97.5° / V: 71.9° / D: 126.2° (XNO-8020R) H: 77.9° / V: 57.9° / D: 98.7° (XNO-8030R) H: 50.7° / V: 37.8° / D: 63.8° (XNO-8040R)	H: 92.1°(Wide) ~ 38.7°(Tele) / V: 67.2°(Wide) ~ 29.0°(Tele) / D: 119.9°(Wide) ~ 48.6°(Tele)
<b>Focus Control</b>	Simple focus / Manual	Simple focus (motorized V/F) / Manual	-	Simple focus (motorized V/F) / Manual
<b>IR Viewable Length</b>	-	50m (164.04ft)	30m (98.43ft)	30m (98.43ft)
<b>Pan / Tilt / Rotate</b>	-	-	-	0° ~ 354° / 0° ~ 67° / 0° ~ 355°
<b>Day &amp; Night</b>	True (ICR)	True (ICR)	True (ICR)	True (ICR)
<b>Backlight Compensation</b>	WDR (120dB)	WDR (120dB)	WDR (120dB)	WDR (120dB)
<b>Digital Noise Reduction</b>	SSNRV (2D+3D Noise filter)	SSNRV (2D+3D Noise filter)	SSNRV (2D+3D Noise filter)	SSNRV (2D+3D Noise filter)
<b>Digital Image Stabilization</b>	Support (Built in Gyro sensor)	Support	Support	Support
<b>Video &amp; Audio Analytics</b>	Tampering, Loitering, Directional detection, Defocus detection, Fog detection, Virtual line, Enter/Exit, (Dis)Appear, Audio detection, Motion detection, Face detection, Digital auto tracking, Sound classification	Tampering, Loitering, Directional detection, Defocus detection, Fog detection, Virtual line, Enter/Exit, (Dis)Appear, Audio detection, Motion detection, Face detection, Digital auto tracking, Sound classification	Tampering, Loitering, Directional detection, Defocus detection, Fog detection, Virtual line, Enter/Exit, (Dis)Appear, Audio detection, Motion detection, Face detection, Digital auto tracking, Sound classification, Heatmap, People counting, Queue management	Tampering, Loitering, Directional detection, Defocus detection, Fog detection, Virtual line, Enter/Exit, (Dis)Appear, Audio detection, Motion detection, Face detection, Digital auto tracking, Sound classification
<b>Protocol</b>	ONVIF profile S/G, SUNAPI	ONVIF profile S/G, SUNAPI	ONVIF profile S/G, SUNAPI	ONVIF profile S/G, SUNAPI
<b>Alarm I/O</b>	1 / 1	1 / 1	1 / 1	1 / 1
<b>Audio</b>	Bi-Directional	Bi-Directional	Bi-Directional	Bi-Directional
<b>Edge Storage</b>	SD/SDHC/SDXC, NAS, Local PC	SD/SDHC/SDXC, NAS, Local PC	SD/SDHC/SDXC, NAS, Local PC	SD/SDHC/SDXC, NAS, Local PC
<b>Environment Protection</b>	-	IP67, IP66, NEMA 4X, IK10	IP67, IP66, NEMA 4X, IK10	IK08
<b>Operating Temperature</b>	-10°C ~ +55°C (+14°F ~ +131°F)	-40°C ~ +55°C (-40°F ~ +131°F)	-30°C ~ +55°C (-22°F ~ +131°F) * Start up above -20°C (-4°F)	-10°C ~ +55°C (+14°F ~ +131°F)
<b>Power</b>	Max. 8.5W (24V AC) Max. 7.5W (12V DC) Max. 8.5W (PoE)	Max. 14.5W (24V AC) Max. 12.5W (12V DC) Max. 12.95W (PoE)	Max. 9.3W (12V DC) Max. 10.3W (PoE)	Max. 9W (12V DC) Max. 10W (PoE)
<b>Dimensions (WxHxD) / Weight</b>	73.1 x 66.6 x 147.8mm (2.88" x 2.62" x 5.82") 420g (0.93 lb)	Ø91.0 x 368.6mm (Ø3.58" x 14.51") (Without Sunshield) 2.18kg (4.81 lb)	Ø70.0 x 296.0mm (Ø2.76" x 11.65") (Without Sunshield) 1.22kg (2.69 lb)	Ø140.8 x 113.0mm (Ø5.54" x 4.45") 628g (1.39 lb) (XND-8080R) 732g (1.61 lb) (XND-8080RV)
<b>Additional Features</b>	Handover, WiseStream II, Advanced video analytics, Sound classification (Explosion, Gunshot, Glass breakage, Scream etc), Hallway View	Handover, WiseStream II, Advanced video analytics, Sound classification (Explosion, Gunshot, Glass breakage, Scream etc), Hallway View	Handover, WiseStream II, Advanced video analytics, Sound classification (Explosion, Gunshot, Glass breakage, Scream etc), Hallway View	Handover, WiseStream II, Advanced video analytics, Sound classification (Explosion, Gunshot, Glass breakage, Scream etc), Hallway View

© 2018 Hanwha Techwin Co.,LTD. All rights reserved.  
\* The latest product information / specification can be found at hanwha-security.com



**Wisenet X  
XND-8020R/8030R/8040R**



**Wisenet X  
XND-8020F**



**Wisenet X  
XNV-8080R**



**Wisenet X  
XNV-8080RS**

	5MP	5MP	5MP	5MP
<b>Resolution</b>	5MP	5MP	5MP	5MP
<b>Imaging Device</b>	1/1.8" 6M CMOS	1/1.8" 6M CMOS	1/1.8" 6M CMOS	1/1.8" 6M CMOS
<b>Video Compression Format</b>	H.265, H.264, MJPEG	H.265, H.264, MJPEG	H.265, H.264, MJPEG	H.265, H.264, MJPEG
<b>Resolution / Max. Frame Rate</b>	5M / 30fps	5M / 30fps	5M / 30fps	5M / 30fps
<b>Streaming Capacity</b>	Multiple (Up to 10 Profiles)	Multiple (Up to 10 Profiles)	Multiple (Up to 10 Profiles)	Multiple (Up to 10 Profiles)
<b>Max. User Access</b>	20 (Unicast)	20 (Unicast)	20 (Unicast)	20 (Unicast)
<b>Min. Illumination</b>	Color: 0.16Lux B/W: 0Lux (IR LED on)	Color: 0.16Lux B/W: 0.16Lux	Color: 0.07Lux B/W: 0Lux (IR LED on)	Color: 0.07Lux B/W: 0Lux (IR LED on)
<b>Video Output</b>	CVBS 1.0Vpp, Micro USB type B	Micro USB type B	CVBS 1.0Vpp, Micro USB type B	CVBS 1.0Vpp, Micro USB type B
<b>Lens</b>	3.7mm fixed (F1.6) (XND-8020R) 4.6mm fixed (F1.6) (XND-8030R) 7.0mm fixed (F1.6) (XND-8040R)	3.7mm fixed (F1.6)	3.9 ~ 9.4mm (2.4x) motorized V/F (F1.3)	3.9 ~ 9.4mm (2.4x) motorized V/F (F1.3)
<b>Angular Field of View</b>	H: 97.5° / V: 71.9° / D: 126.2° (XND-8020R) H: 77.9° / V: 57.9° / D: 98.7° (XND-8030R) H: 50.7° / V: 37.8° / D: 63.8° (XND-8040R)	H: 97.5° / V: 71.9° / D: 126.2°	H: 92.1°(Wide) ~ 38.7°(Tele) / V: 67.2°(Wide) ~ 29.0°(Tele) / D: 119.9°(Wide) ~ 48.6°(Tele)	H: 92.1°(Wide) ~ 38.7°(Tele) / V: 67.2°(Wide) ~ 29.0°(Tele) / D: 119.9°(Wide) ~ 48.6°(Tele)
<b>Focus Control</b>	-	Manual	Simple focus (motorized V/F) / Manual	Simple focus (motorized V/F) / Manual
<b>IR Viewable Length</b>	30m (98.43ft)	-	50m (164.04ft)	50m (164.04ft)
<b>Pan / Tilt / Rotate</b>	0° ~ 354° / 0° ~ 67° / 0° ~ 355°	0° ~ 355° / 0° ~ 47° / 0° ~ 353°	0° ~ 354° / 0° ~ 67° / 0° ~ 355°	0° ~ 354° / 0° ~ 67° / 0° ~ 355°
<b>Day &amp; Night</b>	True (ICR)	Auto (Electrical)	True (ICR)	True (ICR)
<b>Backlight Compensation</b>	WDR (120dB)	WDR (120dB)	WDR (120dB)	WDR (120dB)
<b>Digital Noise Reduction</b>	SSNRV (2D+3D Noise filter)	SSNRV (2D+3D Noise filter)	SSNRV (2D+3D Noise filter)	SSNRV (2D+3D Noise filter)
<b>Digital Image Stabilization</b>	Support	Support	Support	Support
<b>Video &amp; Audio Analytics</b>	Tampering, Loitering, Directional detection, Defocus detection, Fog detection, Virtual line, Enter/Exit, (Dis)Appear, Audio detection, Motion detection, Face detection, Digital auto tracking, Sound classification, Heatmap, People counting, Queue management	Tampering, Loitering, Directional detection, Defocus detection, Fog detection, Virtual line, Enter/Exit, (Dis)Appear, Audio detection, Motion detection, Face detection, Digital auto tracking, Sound classification, Heatmap, People counting, Queue management	Tampering, Loitering, Directional detection, Defocus detection, Fog detection, Virtual line, Enter/Exit, (Dis)Appear, Audio detection, Motion detection, Face detection, Digital auto tracking, Sound classification	Tampering, Loitering, Directional detection, Defocus detection, Fog detection, Virtual line, Enter/Exit, (Dis)Appear, Audio detection, Motion detection, Face detection, Digital auto tracking, Sound classification
<b>Protocol</b>	ONVIF profile S/G, SUNAPI	ONVIF profile S/G, SUNAPI	ONVIF profile S/G, SUNAPI	ONVIF profile S/G, SUNAPI
<b>Alarm I/O</b>	1 / 1	-	1 / 1	1 / 1
<b>Audio</b>	Bi-Directional	Uni-Directional	Bi-Directional	Bi-Directional
<b>Edge Storage</b>	SD/SDHC/SDXC, NAS, Local PC	SD/SDHC/SDXC, NAS, Local PC	SD/SDHC/SDXC, NAS, Local PC	SD/SDHC/SDXC, NAS, Local PC
<b>Environment Protection</b>	IK08	-	IP67, IP66, NEMA 4X, IK10	IP67, IP66, NEMA 4X, IK10+
<b>Operating Temperature</b>	-10°C ~ +55°C (+14°F ~ +131°F)	-10°C ~ +55°C (+14°F ~ +131°F)	-40°C ~ +55°C (-40°F ~ +131°F)	-40°C ~ +55°C (-40°F ~ +131°F)
<b>Power</b>	Max. 8W (12V DC) Max. 9W (PoE)	Max. 4.7W (PoE)	Max. 14W (24V AC) Max. 11.5W (12V DC) Max. 12.95W (PoE)	Max. 14W (24V AC) Max. 11.5W (12V DC) Max. 12.95W (PoE)
<b>Dimensions (WxHxD) / Weight</b>	Ø110.0 x 90.0mm (Ø4.33" x 3.54") 380g (0.84 lb)	Ø98.9 x 129.1mm (Ø3.89" x 5.08") 275g (0.61 lb)	Ø160.0 x 118.5mm (Ø6.30" x 4.67") 1.01kg (2.23 lb)	Ø162 X 120.5mm (Ø6.38" x 4.74") TBD
<b>Additional Features</b>	Handover, WiseStream II, Advanced video analytics, Sound classification (Explosion, Gunshot, Glass breakage, Scream etc), Hallway View	Handover, WiseStream II, Advanced video analytics, Sound classification (Explosion, Gunshot, Glass breakage, Scream etc)	Handover, WiseStream II, Advanced video analytics, Sound classification (Explosion, Gunshot, Glass breakage, Scream etc), Hallway View	Handover, WiseStream II, Advanced video analytics, Sound classification (Explosion, Gunshot, Glass breakage, Scream etc), Hallway View, SUS316L

© 2018 Hanwha Techwin Co.,LTD. All rights reserved.  
\* The latest product information / specification can be found at hanwha-security.com

# Product comparison



**Wisenet X**  
**XNV-8020R/8030R/8040R**



**Wisenet X**  
**XNF-8010R/8010RV/8010RVM**



**Wisenet X**  
**XNB-6005**



**Wisenet X**  
**XNB-6000**

	5MP	6MP	2MP	2MP
<b>Resolution</b>	5MP	6MP	2MP	2MP
<b>Imaging Device</b>	1/1.8" 6M CMOS	1/1.8" 6M CMOS	1/2" 2.17M CMOS	1/2.8" 2M CMOS
<b>Video Compression Format</b>	H.265, H.264, MJPEG	H.265, H.264, MJPEG	H.265, H.264, MJPEG	H.265, H.264, MJPEG
<b>Resolution / Max. Frame Rate</b>	5M / 30fps	2048 x 2048 / 30fps	2M / 60fps	2M / 60fps
<b>Streaming Capacity</b>	Multiple (Up to 10 Profiles)	Multiple (Up to 10 Profiles)	Multiple (Up to 10 Profiles)	Multiple (Up to 10 Profiles)
<b>Max. User Access</b>	20 (Unicast)	20 (Unicast)	20 (Unicast)	20 (Unicast)
<b>Min. Illumination</b>	Color: 0.16Lux B/W: 0Lux (IR LED on)	Color: 0.1Lux B/W: 0Lux (IR LED on)	Color: 0.006Lux B/W: 0.0006Lux	Color: 0.01Lux B/W: 0.001Lux
<b>Video Output</b>	CVBS 1.0Vpp, Micro USB type B	CVBS 1.0Vpp, DIP connector type	CVBS 1.0Vpp, Micro USB type B	CVBS 1.0Vpp, Micro USB type B
<b>Lens</b>	3.7mm fixed (F1.6) (XNV-8020R) 4.6mm fixed (F1.6) (XNV-8030R) 7.0mm fixed (F1.6) (XNV-8040R)	1.6mm fixed (F1.6)	-	-
<b>Angular Field of View</b>	H: 97.5° / V: 71.9° / D: 126.2° (XNV-8020R) H: 77.9° / V: 57.9° / D: 98.7° (XNV-8030R) H: 50.7° / V: 37.8° / D: 63.8° (XNV-8040R)	H: 192° / V: 192° / D: 192°	-	-
<b>Focus Control</b>	-	Simple focus / Manual	Simple focus / Manual	Simple focus / Manual
<b>IR Viewable Length</b>	30m (98.43ft)	15m (49.21ft)	-	-
<b>Pan / Tilt / Rotate</b>	0° ~ 354° / 0° ~ 67° / 0° ~ 355°	-	-	-
<b>Day &amp; Night</b>	True (ICR)	True (ICR)	True (ICR)	True (ICR)
<b>Backlight Compensation</b>	WDR (120dB)	WDR (120dB)	WDR (150dB)	WDR (150dB)
<b>Digital Noise Reduction</b>	SSNRV (2D+3D Noise filter)	SSNRV (2D+3D Noise filter)	SSNRV (2D+3D Noise filter)	SSNRV (2D+3D Noise filter)
<b>Digital Image Stabilization</b>	Support	-	Support (Built in Gyro sensor)	Support (Built in Gyro sensor)
<b>Video &amp; Audio Analytics</b>	Tampering, Loitering, Directional detection, Defocus detection, Fog detection, Virtual line, Enter/Exit, (Dis)Appear, Audio detection, Motion detection, Face detection, Digital auto tracking, Sound classification, Heatmap, People counting, Queue management	Tampering, Loitering, Directional detection, Virtual line, Enter/Exit, (Dis)Appear, Audio detection, Motion detection, Sound classification, Heatmap, People counting, Queue management	Tampering, Loitering, Directional detection, Defocus detection, Fog detection, Virtual line, Enter/Exit, (Dis)Appear, Audio detection, Motion detection, Face detection, Digital auto tracking, Sound classification	Tampering, Loitering, Directional detection, Defocus detection, Fog detection, Virtual line, Enter/Exit, (Dis)Appear, Audio detection, Motion detection, Face detection, Digital auto tracking, Sound classification
<b>Protocol</b>	ONVIF profile S/G, SUNAPI	ONVIF profile S/G, SUNAPI	ONVIF profile S/G, SUNAPI	ONVIF profile S/G, SUNAPI
<b>Alarm I/O</b>	1 / 1	1 / 1	1 / 1	1 / 1
<b>Audio</b>	Bi-Directional	Bi-Directional	Bi-Directional	Bi-Directional
<b>Edge Storage</b>	SD/SDHC/SDXC, NAS, Local PC	SD/SDHC/SDXC, NAS, Local PC	SD/SDHC/SDXC, NAS, Local PC	SD/SDHC/SDXC, NAS, Local PC
<b>Environment Protection</b>	IP67, IP66, IK10	IP66, IK10 (XNF-8010RV/8010RVM)	-	-
<b>Operating Temperature</b>	-30°C ~ +55°C (-22°F ~ +131°F) * Start up above -20°C (-4°F)	-10°C ~ +55°C (+14°F ~ +131°F) (XNF-8010R) -40°C ~ +55°C (-40°F ~ +131°F) (XNF-8010RV/8010RVM)	-10°C ~ +55°C (+14°F ~ +131°F)	-10°C ~ +55°C (+14°F ~ +131°F)
<b>Power</b>	Max. 8W (12V DC) Max. 9W (PoE)	Max. 11W (12V DC), Max. 12W (PoE) (XNF-8010R) Max. 12W (12V DC), Max. 12.95W (PoE) (XNF-8010RV, XNF-8010RVM)	Max. 9W (24V AC) Max. 8W (12V DC) Max. 8.5W (PoE)	Max. 8W (24V AC) Max. 6.5W (12V DC) Max. 7.5W (PoE)
<b>Dimensions (WxHxD) / Weight</b>	Ø120.0 x 97.5mm (Ø4.72" x 3.84") 615g (1.36 lb)	Ø146 x 54.8mm (Ø5.75" x 2.16") 730g (1.61 lb) (XNF-8010R) Ø146 x 65.8mm (Ø5.75" x 2.59") 785g (1.73 lb) (XNF-8010RV) 790g (1.74 lb) (XNF-8010RVM)	73.1 x 66.6 x 147.8mm (2.88" x 2.62" x 5.82") 420g (0.93 lb)	73.1 x 66.6 x 147.8mm (2.88" x 2.62" x 5.82") 420g (0.93 lb)
<b>Additional Features</b>	Handover, WiseStream II, Advanced video analytics, Sound classification (Explosion, Gunshot, Glass breakage, Scream etc), Hallway View	M12 Connector (XNF-8010RVM), Built-in MIC, On board dewarping, Handover, WiseStream II, Heatmap, People counting	extraLUX, Handover, WiseStream II, Advanced video analytics, Sound classification (Explosion, Gunshot, Glass breakage, Scream etc), Hallway View	Handover, WiseStream II, Advanced video analytics, Sound classification (Explosion, Gunshot, Glass breakage, Scream etc), Hallway View



**Wisenet X**  
**XNB-6001**



**Wisenet X**  
**XNO-6120R**



**Wisenet X**  
**XNO-6085R**



**Wisenet X**  
**XNO-6080R**

	2MP	2MP	2MP	2MP
<b>Resolution</b>	2MP	2MP	2MP	2MP
<b>Imaging Device</b>	-	1/2.8" 2M CMOS	1/2" 2.17M CMOS	1/2.8" 2M CMOS
<b>Video Compression Format</b>	H.265, H.264, MJPEG	H.265, H.264, MJPEG	H.265, H.264, MJPEG	H.265, H.264, MJPEG
<b>Resolution / Max. Frame Rate</b>	2M / 60fps	2M / 60fps	2M / 60fps	2M / 60fps
<b>Streaming Capacity</b>	Multiple (Up to 10 Profiles)	Multiple (Up to 10 Profiles)	Multiple (Up to 10 Profiles)	Multiple (Up to 10 Profiles)
<b>Max. User Access</b>	20 (Unicast)	20 (Unicast)	20 (Unicast)	20 (Unicast)
<b>Min. Illumination</b>	-	Color: 0.03Lux B/W: 0Lux (IR LED on)	Color: 0.004Lux B/W: 0Lux (IR LED on)	Color: 0.015Lux B/W: 0Lux (IR LED on)
<b>Video Output</b>	CVBS 1.0Vpp, Micro USB type B	CVBS 1.0Vpp, Micro USB type B	CVBS 1.0Vpp, Micro USB type B	CVBS 1.0Vpp, Micro USB type B
<b>Lens</b>	-	5.2 ~ 62.4mm (Optical 12x) F1.6(Wide) / F3.0(Tele)	4.1 ~ 16.4mm (Optical 4x) motorized V/F F0.94(Wide) / F2.4(Tele)	2.8 ~ 12mm (4.3x) motorized V/F (F1.4)
<b>Angular Field of View</b>	-	H: 54.58°(Wide) ~ 5.30°(Tele) / V: 32.19°(Wide) ~ 3.00°(Tele) / D: 61.40°(Wide) ~ 6.06°(Tele)	H: 100° (Wide) ~ 26.2° (Tele) / V: 54° (Wide) ~ 14.8° (Tele) / D: 116° (Wide) ~ 30.0° (Tele)	H: 119.5° (Wide) ~ 27.9° (Tele) / V: 62.8° (Wide) ~ 15.7° (Tele) / D: 142.1° (Wide) ~ 32.0° (Tele)
<b>Focus Control</b>	-	Auto / Manual / One shot AF	Simple focus (motorized V/F) / Manual	Simple focus (motorized V/F) / Manual
<b>IR Viewable Length</b>	-	70m (229.66ft)	70m (229.66ft)	50m (164.04ft)
<b>Pan / Tilt / Rotate</b>	-	-	-	-
<b>Day &amp; Night</b>	-	True (ICR)	True (ICR)	True (ICR)
<b>Backlight Compensation</b>	WDR (120dB)	WDR (150dB)	WDR (150dB)	WDR (150dB)
<b>Digital Noise Reduction</b>	SSNRV (2D+3D Noise filter)	SSNRV (2D+3D Noise filter)	SSNRV (2D+3D Noise filter)	SSNRV (2D+3D Noise filter)
<b>Digital Image Stabilization</b>	Support	Support	Support (Built in Gyro sensor)	Support
<b>Video &amp; Audio Analytics</b>	Tampering, Loitering, Directional detection, Defocus detection, Fog detection, Virtual line, Enter/Exit, (Dis)Appear, Audio detection, Motion detection, Face detection, Digital auto tracking, Heatmap, People counting, Queue management	Tampering, Loitering, Directional detection, Defocus detection, Fog detection, Virtual line, Enter/Exit, (Dis)Appear, Audio detection, Motion detection, Face detection, Sound classification	Tampering, Loitering, Directional detection, Defocus detection, Fog detection, Virtual line, Enter/Exit, (Dis)Appear, Audio detection, Motion detection, Face detection, Digital auto tracking, Sound classification	Tampering, Loitering, Directional detection, Defocus detection, Fog detection, Virtual line, Enter/Exit, (Dis)Appear, Audio detection, Motion detection, Face detection, Digital auto tracking, Sound classification
<b>Protocol</b>	ONVIF profile S/G, SUNAPI	ONVIF profile S/G, SUNAPI	ONVIF Profile S&G, SUNAPI	ONVIF profile S/G, SUNAPI
<b>Alarm I/O</b>	1 / 1	1 / 1	1 / 1	1 / 1
<b>Audio</b>	Bi-Directional	Bi-Directional	Bi-Directional	Bi-Directional
<b>Edge Storage</b>	SD/SDHC/SDXC, NAS, Local PC	SD/SDHC/SDXC, NAS, Local PC	SD/SDHC/SDXC, NAS, Local PC	SD/SDHC/SDXC, NAS, Local PC
<b>Environment Protection</b>	-	IP67, IP66, NEMA 4X, IK10	IP67, IP66, NEMA 4X, IK10	IP67, IP66, NEMA 4X, IK10
<b>Operating Temperature</b>	-10°C ~ +55°C (+14°F ~ +131°F)	-40°C ~ +55°C (-40°F ~ +131°F) * Start up above -35°C (-31°F)	-40°C ~ +55°C (-40°F ~ +131°F) * Start up above -35°C (-31°F)	-40°C ~ +55°C (-40°F ~ +131°F)
<b>Power</b>	Max. 6.5W (12V DC) Max. 6W (PoE)	Max. 14.5W (24V AC) Max. 12.5W (12V DC) Max. 12.95W (PoE)	Max. 14.5W (24V AC) Max. 12.5W (12V DC) Max. 12.95W (PoE)	Max. 15W (24V AC) Max. 12W (12V DC) Max. 12.95W (PoE)
<b>Dimensions (WxHxD) / Weight</b>	131.1 x 28 x 86mm (5.16" x 1.10" x 3.39") 245g (0.54 lb)	Ø91.0 x 368.6mm (Ø3.58" x 14.51") 2.18Kg (4.81 lb)	Ø91.0 x 368.6mm (Ø3.58" x 14.51") 2.35Kg (5.18 lb)	Ø91.0 x 368.6mm (Ø3.58" x 14.51") (Without Sunshield) 2.18Kg (4.81 lb)
<b>Additional Features</b>	Handover, WiseStream II, Advanced video analytics	Handover, WiseStream II, Advanced video analytics, Sound classification (Explosion, Gunshot, Glass breakage, Scream etc), Hallway View	extraLUX, Handover, WiseStream II, Advanced video analytics, Sound classification (Explosion, Gunshot, Glass breakage, Scream etc), Hallway View	Handover, WiseStream II, Advanced video analytics, Sound classification (Explosion, Gunshot, Glass breakage, Scream etc), Hallway View

# Product comparison



**Wisenet X  
XNO-L6080R**



**Wisenet X  
XNO-6010R/6020R**



**Wisenet X  
XND-6085/6085V**



**Wisenet X  
XND-6080**



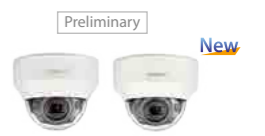
**Wisenet X  
XND-6080R**



**Wisenet X  
XND-6080V**



**Wisenet X  
XND-6080RV**



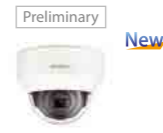
**Wisenet X  
XND-L6080R/L6080RV**

	2MP	2MP	2MP	2MP
Resolution	2MP	2MP	2MP	2MP
Imaging Device	1/2.8" 2M CMOS	1/2.8" 2M CMOS	1/2" 2.17M CMOS	1/2.8" 2M CMOS
Video Compression Format	H.265, H.264, MJPEG	H.265, H.264, MJPEG	H.265, H.264, MJPEG	H.265, H.264, MJPEG
Resolution / Max. Frame Rate	2M / 60fps	2M / 60fps	2M / 60fps	2M / 60fps
Streaming Capacity	Multiple (Up to 5 Profiles)	Multiple (Up to 10 Profiles)	Multiple (Up to 10 Profiles)	Multiple (Up to 10 Profiles)
Max. User Access	20 (Unicast)	20 (Unicast)	20 (Unicast)	20 (Unicast)
Min. Illumination	Color : 0.1Lux B/W : 0Lux (IR LED on)	Color : 0.055Lux (XNO-6010R), 0.015Lux (XNO-6020R) B/W : 0Lux (IR LED on)	Color : 0.004Lux B/W : 0.0004Lux	Color : 0.015Lux B/W : 0.0015Lux
Video Output	CVBS 1.0Vpp, Micro USB type B	CVBS 1.0Vpp, Micro USB type B	CVBS 1.0Vpp, Micro USB type B	CVBS 1.0Vpp, Micro USB type B
Lens	3.2 ~ 10mm motorized V/F (TBD)	2.4mm fixed (F2.0) (XNO-6010R) 4mm fixed (F1.4) (XNO-6020R)	4.1 ~ 16.4mm (Optical 4x) F0.94(Wide) / F2.4(Tele)	2.8 ~ 12mm (4.3x) motorized V/F (F1.4)
Angular Field of View	TBD	H : 139.0° / V : 73.0° / D : 167.0° (XNO-6010R) H : 88.6° / V : 47.5° / D : 104.8° (XNO-6020R)	H : 100° (Wide) ~ 26.2° (Tele) / V : 54° (Wide) ~ 14.8° (Tele) / D : 116° (Wide) ~ 30.0° (Tele)	H : 119.5° (Wide) ~ 27.9° (Tele) / V : 62.8° (Wide) ~ 15.7° (Tele) / D : 142.1° (Wide) ~ 32.0° (Tele)
Focus Control	Simple focus (motorized V/F) / Manual	-	Simple focus (motorized V/F) / Manual	Simple focus (motorized V/F) / Manual
IR Viewable Length	30m (98.43ft)	20m (65.61ft) (XNO-6010R) 30m (98.43ft) (XNO-6020R)	-	-
Pan / Tilt / Rotate	-	-	±175° / ±73° / ±175°	0° ~ 354° / 0° ~ 67° / 0° ~ 355°
Day & Night	True (ICR)	True (ICR)	True (ICR)	True (ICR)
Backlight Compensation	WDR (120dB)	WDR (150dB)	WDR (150dB)	WDR (150dB)
Digital Noise Reduction	SSNRV (2D+3D Noise filter)	SSNRV (2D+3D Noise filter)	SSNRV (2D+3D Noise filter)	SSNRV (2D+3D Noise filter)
Digital Image Stabilization	Support	Support	Support (Built in Gyro sensor)	Support
Video & Audio Analytics	Tampering, Motion detection	Tampering, Loitering, Directional detection, Defocus detection, Fog detection, Virtual line, Enter/Exit, (Dis)Appear, Audio detection, Motion detection, Face detection, Digital auto tracking, Sound classification, Heatmap, People counting, Queue management	Tampering, Loitering, Directional detection, Defocus detection, Fog detection, Virtual line, Enter/Exit, (Dis)Appear, Audio detection, Motion detection, Face detection, Digital auto tracking, Sound classification	Tampering, Loitering, Directional detection, Defocus detection, Fog detection, Virtual line, Enter/Exit, (Dis)Appear, Audio detection, Motion detection, Face detection, Digital auto tracking, Sound classification
Protocol	ONVIF profile S/G, SUNAPI	ONVIF profile S/G, SUNAPI	ONVIF profile S/G, SUNAPI	ONVIF profile S/G, SUNAPI
Alarm I/O	-	1 / 1	1 / 1	1 / 1
Audio	-	Bi-Directional	Bi-Directional	Bi-Directional
Edge Storage	SD/SDHC/SDXC, NAS, Local PC	SD/SDHC/SDXC, NAS, Local PC	SD/SDHC/SDXC, NAS, Local PC	SD/SDHC/SDXC, NAS, Local PC
Environment Protection	IP67, IP66, NEMA 4X, IK10	IP67, IP66, NEMA 4X, IK10	IP51, IK08	IK08
Operating Temperature	-40°C ~ +55°C (-40°F ~ +131°F)	-30°C ~ +55°C (-22°F ~ +131°F) * Start up above -20°C (-4°F)	-30°C ~ +55°C (-22°F ~ +131°F) * Start up above -10°C (+14°F)	-10°C ~ +55°C (+14°F ~ +131°F)
Power	TBD (PoE)	Max. 8.8W (12V DC) Max. 9.7W (PoE)	Max. 8.6W (12V DC) Max. 10.2W (PoE)	Max. 6W (12V DC) Max. 6.5W (PoE)
Dimensions (WxHxD) / Weight	TBD	Ø70 x 301.5mm (Ø2.76" x 11.87") (XNO-6010R) Ø70 x 296mm (Ø2.76" x 11.65") (XNO-6020R) (Without sunshield) 1.22kg (2.69 lb)	Ø160.0 x 140.0mm (Ø6.30" x 5.51") 1.10 kg (2.43 lb) (XND-6085) 1.25 kg (2.76 lb) (XND-6085V)	Ø140.8 x 113.0mm (Ø5.54" x 4.45") 610g (1.34 lb)
Additional Features	WiseStream II, Lens distortion correction, Defog, Hallway View	Handover, WiseStream II, Advanced video analytics, Sound classification (Explosion, Gunshot, Glass breakage, Scream etc), Hallway View	extraLUX, Handover, WiseStream II, Advanced video analytics, Sound classification (Explosion, Gunshot, Glass breakage, Scream etc), Hallway View	Handover, WiseStream II, Advanced video analytics, Sound classification (Explosion, Gunshot, Glass breakage, Scream etc), Hallway View

	2MP	2MP	2MP	2MP
Resolution	2MP	2MP	2MP	2MP
Imaging Device	1/2.8" 2M CMOS	1/2.8" 2M CMOS	1/2.8" 2M CMOS	1/2.8" 2M CMOS
Video Compression Format	H.265, H.264, MJPEG	H.265, H.264, MJPEG	H.265, H.264, MJPEG	H.265, H.264, MJPEG
Resolution / Max. Frame Rate	2M / 60fps	2M / 60fps	2M / 60fps	2M / 60fps
Streaming Capacity	Multiple (Up to 10 Profiles)	Multiple (Up to 10 Profiles)	Multiple (Up to 10 Profiles)	Multiple (Up to 5 Profiles)
Max. User Access	20 (Unicast)	20 (Unicast)	20 (Unicast)	20 (Unicast)
Min. Illumination	Color : 0.015Lux B/W : 0Lux (IR LED on)	Color : 0.015Lux B/W : 0.0015Lux	Color : 0.015Lux B/W : 0Lux (IR LED on)	Color : 0.1Lux B/W : 0Lux (IR LED on)
Video Output	CVBS 1.0Vpp, Micro USB type B	CVBS 1.0Vpp, Micro USB type B	CVBS 1.0Vpp, Micro USB type B	CVBS 1.0Vpp, Micro USB type B
Lens	2.8 ~ 12mm (4.3x) motorized V/F (F1.4)	2.8 ~ 12mm (4.3x) motorized V/F (F1.4)	2.8 ~ 12mm (4.3x) motorized V/F (F1.4)	3.2 ~ 10mm motorized V/F (TBD)
Angular Field of View	H : 119.5° (Wide) ~ 27.9° (Tele) / V : 62.8° (Wide) ~ 15.7° (Tele) / D : 142.1° (Wide) ~ 32.0° (Tele)	H : 119.5° (Wide) ~ 27.9° (Tele) / V : 62.8° (Wide) ~ 15.7° (Tele) / D : 142.1° (Wide) ~ 32.0° (Tele)	H : 119.5° (Wide) ~ 27.9° (Tele) / V : 62.8° (Wide) ~ 15.7° (Tele) / D : 142.1° (Wide) ~ 32.0° (Tele)	TBD
Focus Control	Simple focus (motorized V/F) / Manual	Simple focus (motorized V/F) / Manual	Simple focus (motorized V/F) / Manual	Simple focus (motorized V/F) / Manual
IR Viewable Length	30m (98.43ft)	-	30m (98.43ft)	30m (98.43ft)
Pan / Tilt / Rotate	0° ~ 354° / 0° ~ 67° / 0° ~ 355°	0° ~ 354° / 0° ~ 67° / 0° ~ 355°	0° ~ 354° / 0° ~ 67° / 0° ~ 355°	0° ~ 354° / 0° ~ 67° / 0° ~ 355°
Day & Night	True (ICR)	True (ICR)	True (ICR)	True (ICR)
Backlight Compensation	WDR (150dB)	WDR (150dB)	WDR (150dB)	WDR (120dB)
Digital Noise Reduction	SSNRV (2D+3D Noise filter)	SSNRV (2D+3D Noise filter)	SSNRV (2D+3D Noise filter)	SSNRV (2D+3D Noise filter)
Digital Image Stabilization	Support	Support	Support	Support
Video & Audio Analytics	Tampering, Loitering, Directional detection, Defocus detection, Fog detection, Virtual line, Enter/Exit, (Dis)Appear, Audio detection, Motion detection, Face detection, Digital auto tracking, Sound classification	Tampering, Loitering, Directional detection, Defocus detection, Fog detection, Virtual line, Enter/Exit, (Dis)Appear, Audio detection, Motion detection, Face detection, Digital auto tracking, Sound classification	Tampering, Loitering, Directional detection, Defocus detection, Fog detection, Virtual line, Enter/Exit, (Dis)Appear, Audio detection, Motion detection, Face detection, Digital auto tracking, Sound classification	Tampering, Motion detection
Protocol	ONVIF profile S/G, SUNAPI	ONVIF profile S/G, SUNAPI	ONVIF profile S/G, SUNAPI	ONVIF profile S/G, SUNAPI
Alarm I/O	1 / 1	1 / 1	1 / 1	-
Audio	Bi-Directional	Bi-Directional	Bi-Directional	-
Edge Storage	SD/SDHC/SDXC, NAS, Local PC	SD/SDHC/SDXC, NAS, Local PC	SD/SDHC/SDXC, NAS, Local PC	SD/SDHC/SDXC, NAS, Local PC
Environment Protection	IK08	IK08	IK08	IK08
Operating Temperature	-10°C ~ +55°C (+14°F ~ +131°F)	-10°C ~ +55°C (+14°F ~ +131°F)	-10°C ~ +55°C (+14°F ~ +131°F)	-10°C ~ +55°C (+14°F ~ +131°F)
Power	Max. 9W (12V DC) Max. 10W (PoE)	Max. 6W (12V DC) Max. 6.5W (PoE)	Max. 9W (12V DC) Max. 10W (PoE)	TBD (PoE)
Dimensions (WxHxD) / Weight	Ø140.8 x 113.0mm (Ø5.54" x 4.45") 624g (1.38 lb)	Ø140.8 x 113.0mm (Ø5.54" x 4.45") 714g (1.57 lb)	Ø140.8 x 113.0mm (Ø5.54" x 4.45") 724g (1.60 lb)	Ø140.8 x 113.0mm (Ø5.54" x 4.45") 624g (1.38 lb) (XND-L6080R) 714g (1.60 lb) (XND-L6080RV)
Additional Features	Handover, WiseStream II, Advanced video analytics, Sound classification (Explosion, Gunshot, Glass breakage, Scream etc), Hallway View	Handover, WiseStream II, Advanced video analytics, Sound classification (Explosion, Gunshot, Glass breakage, Scream etc), Hallway View	Handover, WiseStream II, Advanced video analytics, Sound classification (Explosion, Gunshot, Glass breakage, Scream etc), Hallway View	WiseStream II, Lens distortion correction, Defog, Hallway View



# Product comparison



**Wisenet X**  
**XND-L6080V**



**Wisenet X**  
**XND-6020R**



**Wisenet X**  
**XND-6011F**



**Wisenet X**  
**XND-6010**



**Wisenet X**  
**XNV-6120/6120R**



**Wisenet X**  
**XNV-6120RS**



**Wisenet X**  
**XNV-6085**



**Wisenet X**  
**XNV-6080**

	2MP	2MP	2MP	2MP
<b>Resolution</b>	2MP	2MP	2MP	2MP
<b>Imaging Device</b>	1/2.8" 2M CMOS	1/2.8" 2M CMOS	1/2.8" 2M CMOS	1/2.8" 2M CMOS
<b>Video Compression Format</b>	H.265, H.264, MJPEG	H.265, H.264, MJPEG	H.265, H.264, MJPEG	H.265, H.264, MJPEG
<b>Resolution / Max. Frame Rate</b>	2M / 60fps	2M / 60fps	2M / 60fps	2M / 60fps
<b>Streaming Capacity</b>	Multiple (Up to 5 Profiles)	Multiple (Up to 10 Profiles)	Multiple (Up to 10 Profiles)	Multiple (Up to 10 Profiles)
<b>Max. User Access</b>	20 (Unicast)	20 (Unicast)	20 (Unicast)	20 (Unicast)
<b>Min. Illumination</b>	Color: 0.1Lux B/W: 0.01Lux	Color: 0.015Lux B/W: 0Lux (IR LED on)	Color: 0.055Lux B/W: 0.055Lux	Color: 0.055Lux B/W: 0.055Lux
<b>Video Output</b>	CVBS 1.0Vpp, Micro USB type B	CVBS 1.0Vpp, Micro USB type B	Micro USB type B	CVBS 1.0Vpp, Micro USB type B
<b>Lens</b>	3.2 ~ 10mm motorized V/F (TBD)	4mm fixed (F1.4)	2.8mm fixed (F2.0)	2.4mm fixed (F2.0)
<b>Angular Field of View</b>	TBD	H: 88.6° / V: 47.5° / D: 104.8°	H: 112° / V: 62° / D: 130°	H: 139.0° / V: 73.0° / D: 167.0°
<b>Focus Control</b>	Simple focus (motorized V/F) / Manual	-	Manual	-
<b>IR Viewable Length</b>	-	30m (98.43ft)	-	-
<b>Pan / Tilt / Rotate</b>	0° ~ 354° / 0° ~ 67° / 0° ~ 355°	0° ~ 354° / 0° ~ 67° / 0° ~ 355°	0° ~ 355° / 0° ~ 47° / 0° ~ 353°	0° ~ 354° / 0° ~ 67° / 0° ~ 355°
<b>Day &amp; Night</b>	True (ICR)	True (ICR)	Auto (Electrical)	True (ICR)
<b>Backlight Compensation</b>	WDR (120dB)	WDR (150dB)	WDR (150dB)	WDR (150dB)
<b>Digital Noise Reduction</b>	SSNRV (2D+3D Noise filter)	SSNRV (2D+3D Noise filter)	SSNRV (2D+3D Noise filter)	SSNRV (2D+3D Noise filter)
<b>Digital Image Stabilization</b>	Support	Support	Support	Support
<b>Video &amp; Audio Analytics</b>	Tampering, Motion detection	Tampering, Loitering, Directional detection, Defocus detection, Fog detection, Virtual line, Enter/Exit, (Dis)Appear, Audio detection, Motion detection, Face detection, Digital auto tracking, Sound classification, Heatmap, People counting, Queue management	Tampering, Loitering, Directional detection, Defocus detection, Fog detection, Virtual line, Enter/Exit, (Dis)Appear, Audio detection, Motion detection, Face detection, Digital auto tracking, Sound classification, Heatmap, People counting, Queue management	Tampering, Loitering, Directional detection, Defocus detection, Fog detection, Virtual line, Enter/Exit, (Dis)Appear, Audio detection, Motion detection, Face detection, Digital auto tracking, Sound classification, Heatmap, People counting, Queue management
<b>Protocol</b>	ONVIF profile S/G, SUNAPI	ONVIF profile S/G, SUNAPI	ONVIF profile S/G, SUNAPI	ONVIF profile S/G, SUNAPI
<b>Alarm I/O</b>	-	1 / 1	-	1 / 1
<b>Audio</b>	-	Bi-Directional	Uni-Directional	Bi-Directional
<b>Edge Storage</b>	SD/SDHC/SDXC, NAS, Local PC	SD/SDHC/SDXC, NAS, Local PC	SD/SDHC/SDXC, NAS, Local PC	SD/SDHC/SDXC, NAS, Local PC
<b>Environment Protection</b>	IK08	IK08	-	IK08
<b>Operating Temperature</b>	-10°C ~ +55°C (+14°F ~ +131°F)	-10°C ~ +55°C (+14°F ~ +131°F)	-10°C ~ +55°C (+14°F ~ +131°F)	-10°C ~ +55°C (+14°F ~ +131°F) * Start up above -35°C (-31°F)
<b>Power</b>	TBD (PoE)	Max. 8W (12V DC) Max. 9W (PoE)	Max. 4.7W	Max. 5.5W (12V DC) Max. 6W (PoE)
<b>Dimensions (WxHxD) / Weight</b>	Ø140.8 x 113.0mm (Ø5.54" x 4.45") 714g (1.60 lb)	Ø110.0 x 90.0mm (Ø4.33" x 3.54") 380g (0.84 lb)	Ø98.9 x 129mm (Ø3.89" x 5.08") 275g (0.61 lb)	Ø110.0 x 90.0mm (Ø4.33" x 3.54") 365g (0.80 lb)
<b>Additional Features</b>	WiseStream II, Lens distortion correction, Defog, Hallway View	Handover, WiseStream II, Advanced video analytics, Sound classification (Explosion, Gunshot, Glass breakage, Scream etc), Hallway View	Handover, WiseStream II, Advanced video analytics, Sound classification (Explosion, Gunshot, Glass breakage, Scream etc), Hallway View	Handover, WiseStream II, Advanced video analytics, Sound classification (Explosion, Gunshot, Glass breakage, Scream etc), Hallway View

	2MP	2MP	2MP	2MP
<b>Resolution</b>	2MP	2MP	2MP	2MP
<b>Imaging Device</b>	1/2.8" 2M CMOS	1/2.8" 2M CMOS	1/2" 2.17M CMOS	1/2.8" 2M CMOS
<b>Video Compression Format</b>	H.265, H.264, MJPEG	H.265, H.264, MJPEG	H.265, H.264, MJPEG	H.265, H.264, MJPEG
<b>Resolution / Max. Frame Rate</b>	2M / 60fps	2M / 60fps	2M / 60fps	2M / 60fps
<b>Streaming Capacity</b>	Multiple (Up to 10 Profiles)	Multiple (Up to 10 Profiles)	Multiple (Up to 10 Profiles)	Multiple (Up to 10 Profiles)
<b>Max. User Access</b>	20 (Unicast)	20 (Unicast)	20 (Unicast)	20 (Unicast)
<b>Min. Illumination</b>	Color: 0.03Lux B/W: 0.003Lux (XNV-6120) Color: 0.03Lux B/W: 0Lux (IR LED on) (XNV-6120R)	Color: 0.03Lux B/W: 0Lux (IR LED on)	Color: 0.004Lux B/W: 0.0004Lux	Color: 0.015Lux B/W: 0.0015Lux
<b>Video Output</b>	CVBS 1.0Vpp, Micro USB type B	CVBS 1.0Vpp, Micro USB type B	CVBS 1.0Vpp, Micro USB type B	CVBS 1.0Vpp, Micro USB type B
<b>Lens</b>	5.2 ~ 62.4mm (Optical 12x) F1.6(Wide) / F3.0(Tele)	5.2 ~ 62.4mm (Optical 12x) F1.6(Wide) / F3.0(Tele)	4.1 ~ 16.4mm (Optical 4x) F0.94(Wide) / F2.4(Tele)	2.8 ~ 12mm (4.3x) motorized V/F (F1.4)
<b>Angular Field of View</b>	H: 54.58°(Wide) ~ 5.30°(Tele) / V: 32.19°(Wide) ~ 3.00°(Tele) / D: 61.40°(Wide) ~ 6.06°(Tele)	H: 54.58°(Wide) ~ 5.30°(Tele) / V: 32.19°(Wide) ~ 3.00°(Tele) / D: 61.40°(Wide) ~ 6.06°(Tele)	H: 100°(Wide) ~ 26.2°(Tele) / V: 54°(Wide) ~ 14.8°(Tele) / D: 116°(Wide) ~ 30.0°(Tele)	H: 119.5°(Wide) ~ 27.9°(Tele) / V: 62.8°(Wide) ~ 15.7°(Tele) / D: 142.1°(Wide) ~ 32.0°(Tele)
<b>Focus Control</b>	Auto / Manual / One shot AF	Auto / Manual / One shot AF	Simple focus (motorized V/F) / Manual	Simple focus (motorized V/F) / Manual
<b>IR Viewable Length</b>	70m (229.66ft) (XNV-6120R)	70m (229.66ft)	-	-
<b>Pan / Tilt / Rotate</b>	0° ~ 354° / 0° ~ 75° / 0° ~ 355°	0° ~ 354° / 0° ~ 75° / 0° ~ 355°	±175° / ±73° / ±175°	0° ~ 354° / 0° ~ 67° / 0° ~ 355°
<b>Day &amp; Night</b>	True (ICR)	True (ICR)	True (ICR)	True (ICR)
<b>Backlight Compensation</b>	WDR (150dB)	WDR (150dB)	WDR (150dB)	WDR (150dB)
<b>Digital Noise Reduction</b>	SSNRV (2D+3D Noise filter)	SSNRV (2D+3D Noise filter)	SSNRV (2D+3D Noise filter)	SSNRV (2D+3D Noise filter)
<b>Digital Image Stabilization</b>	Support (Built in Gyro sensor)	Support (Built in Gyro sensor)	Support (Built in Gyro sensor)	Support
<b>Video &amp; Audio Analytics</b>	Tampering, Loitering, Directional detection, Defocus detection, Fog detection, Virtual line, Enter/Exit, (Dis)Appear, Audio detection, Motion detection, Face detection, Sound classification	Tampering, Loitering, Directional detection, Defocus detection, Fog detection, Virtual line, Enter/Exit, (Dis)Appear, Audio detection, Motion detection, Face detection, Sound classification	Tampering, Loitering, Directional detection, Defocus detection, Fog detection, Virtual line, Enter/Exit, (Dis)Appear, Audio detection, Motion detection, Face detection, Digital auto tracking, Sound classification	Tampering, Loitering, Directional detection, Defocus detection, Fog detection, Virtual line, Enter/Exit, (Dis)Appear, Audio detection, Motion detection, Face detection, Digital auto tracking, Sound classification
<b>Protocol</b>	ONVIF profile S/G, SUNAPI	ONVIF profile S/G, SUNAPI	ONVIF profile S/G, SUNAPI	ONVIF profile S/G, SUNAPI
<b>Alarm I/O</b>	1 / 1	1 / 1	1 / 1	1 / 1
<b>Audio</b>	Bi-Directional	Bi-Directional	Bi-Directional	Bi-Directional
<b>Edge Storage</b>	SD/SDHC/SDXC, NAS, Local PC	SD/SDHC/SDXC, NAS, Local PC	SD/SDHC/SDXC, NAS, Local PC	SD/SDHC/SDXC, NAS, Local PC
<b>Environment Protection</b>	IP67, IP66, NEMA 4X, IK10	IP67, IP66, NEMA 4X, IK10+	IP67, IP66, NEMA 4X, IK10	IP67, IP66, NEMA 4X, IK10
<b>Operating Temperature</b>	-40°C ~ +55°C (-40°F ~ +131°F) * Start up above -35°C (-31°F)	-40°C ~ +55°C (-40°F ~ +131°F) * Start up above -35°C (-31°F)	-40°C ~ +55°C (-40°F ~ +131°F) * Start up above -35°C (-31°F)	-40°C ~ +55°C (-40°F ~ +131°F)
<b>Power</b>	Max. 8.2W (24V AC), Max. 7W (12V DC), Max. 7.8W (PoE) (XNV-6120) Max. 14W (24V AC), Max. 11.5W (12V DC), Max. 12.95W (PoE) (XNV-6120R)	Max. 14W (24V AC) Max. 11.5W (12V DC) Max. 12.95W (PoE)	Max. 13.5W (24V AC), Max. 11.1W (12V DC), Max. 12.1W (PoE)	Max. 8.2W (24V AC) Max. 7W (12V DC) Max. 7.8W (PoE)
<b>Dimensions (WxHxD) / Weight</b>	Ø160.0 x 128.5mm (Ø6.30" x 5.06") 985g (2.17 lb) (XNV-6120) 995g (2.19 lb) (XNV-6120R)	Ø162 x 134.5mm (Ø6.38" x 5.3") TBD	TBD	Ø160.0 x 118.5mm (Ø6.30" x 4.67") 985g (2.17 lb)
<b>Additional Features</b>	Handover, WiseStream II, Advanced video analytics, Sound classification (Explosion, Gunshot, Glass breakage, Scream etc), Hallway View	Handover, WiseStream II, Advanced video analytics, Sound classification (Explosion, Gunshot, Glass breakage, Scream etc), Hallway View, SUS316L	extraLUX, Handover, WiseStream II, Advanced video analytics, Sound classification (Explosion, Gunshot, Glass breakage, Scream etc) Hallway View	Handover, WiseStream II, Advanced video analytics, Sound classification (Explosion, Gunshot, Glass breakage, Scream etc), Hallway View



# Product comparison



Wisenet X  
XNV-6080R



Wisenet X  
XNV-6080RS



Preliminary  
Wisenet X  
XNV-L6080



Preliminary  
Wisenet X  
XNV-L6080R



New  
Wisenet X  
XNV-6022R



New  
Wisenet X  
XNV-6022RM



Wisenet X  
XNV-6020R



New  
Wisenet X  
XNV-6013M

	2MP	2MP	2MP	2MP
Resolution	2MP	2MP	2MP	2MP
Imaging Device	1/2.8" 2M CMOS	1/2.8" 2M CMOS	1/2.8" 2M CMOS	1/2.8" 2M CMOS
Video Compression Format	H.265, H.264, MJPEG	H.265, H.264, MJPEG	H.265, H.264, MJPEG	H.265, H.264, MJPEG
Resolution / Max. Frame Rate	2M / 60fps	2M / 60fps	2M / 60fps	2M / 60fps
Streaming Capacity	Multiple (Up to 10 Profiles)	Multiple (Up to 10 Profiles)	Multiple (Up to 5 Profiles)	Multiple (Up to 5 Profiles)
Max. User Access	20 (Unicast)	20 (Unicast)	20 (Unicast)	20 (Unicast)
Min. Illumination	Color: 0.015Lux B/W: 0Lux (IR LED on)	Color: 0.015Lux B/W: 0Lux (IR LED on)	Color: 0.1Lux B/W: 0.01Lux	Color: 0.1 Lux, B/W: 0Lux (IR LED on)
Video Output	CVBS 1.0Vpp, Micro USB type B	CVBS 1.0Vpp, Micro USB type B	CVBS 1.0Vpp, Micro USB type B	CVBS 1.0Vpp, Micro USB type B
Lens	2.8 ~ 12mm (4.3x) motorized V/F (F1.4)	2.8 ~ 12mm (4.3x) motorized V/F (F1.4)	3.2 ~ 10mm motorized V/F (TBD)	3.2 ~ 10mm motorized V/F (TBD)
Angular Field of View	H: 119.5°(Wide) ~ 27.9°(Tele) / V: 62.8°(Wide) ~ 15.7°(Tele) / D: 142.1°(Wide) ~ 32.0°(Tele)	H: 119.5°(Wide) ~ 27.9°(Tele) / V: 62.8°(Wide) ~ 15.7°(Tele) / D: 142.1°(Wide) ~ 32.0°(Tele)	TBD	TBD
Focus Control	Simple focus (motorized V/F) / Manual	Simple focus (motorized V/F) / Manual	Simple focus (motorized V/F) / Manual	Simple focus (motorized V/F) / Manual
IR Viewable Length	50m (164.04ft)	50m (164.04ft)	-	30m (98.43ft)
Pan / Tilt / Rotate	0° ~ 354° / 0° ~ 67° / 0° ~ 355°	0° ~ 354° / 0° ~ 67° / 0° ~ 355°	0° ~ 354° / 0° ~ 67° / 0° ~ 355°	0° ~ 354° / 0° ~ 67° / 0° ~ 355°
Day & Night	True (ICR)	True (ICR)	True (ICR)	True (ICR)
Backlight Compensation	WDR (150dB)	WDR (150dB)	WDR (120dB)	WDR (120dB)
Digital Noise Reduction	SSNRV (2D+3D Noise filter)	SSNRV (2D+3D Noise filter)	SSNRV (2D+3D Noise filter)	SSNRV (2D+3D Noise filter)
Digital Image Stabilization	Support	Support	Support	Support
Video & Audio Analytics	Tampering, Loitering, Directional detection, Defocus detection, Fog detection, Virtual line, Enter/Exit, (Dis)Appear, Audio detection, Motion detection, Face detection, Digital auto tracking, Sound classification	Tampering, Loitering, Directional detection, Defocus detection, Fog detection, Virtual line, Enter/Exit, (Dis)Appear, Audio detection, Motion detection, Face detection, Digital auto tracking, Sound classification	Tampering, Motion detection	Tampering, Motion detection
Protocol	ONVIF profile S/G, SUNAPI	ONVIF profile S/G, SUNAPI	ONVIF profile S/G, SUNAPI	ONVIF profile S/G, SUNAPI
Alarm I/O	1 / 1	1 / 1	-	-
Audio	Bi-Directional	Bi-Directional	-	-
Edge Storage	SD/SDHC/SDXC, NAS, Local PC	SD/SDHC/SDXC, NAS, Local PC	SD/SDHC/SDXC, NAS, Local PC	SD/SDHC/SDXC, NAS, Local PC
Environment Protection	IP67, IP66, NEMA 4X, IK10	IP67, IP66, NEMA 4X, IK10+	IP67, IP66, NEMA 4X, IK10	IP67, IP66, NEMA 4X, IK10
Operating Temperature	-40°C ~ +55°C (-40°F ~ +131°F)	-40°C ~ +55°C (-40°F ~ +131°F)	-40°C ~ +55°C (-40°F ~ +131°F)	-40°C ~ +55°C (-40°F ~ +131°F)
Power	Max. 14W (24V AC) Max. 11.5W (12V DC) Max. 12.95W (PoE)	Max. 14W (24V AC) Max. 11.5W (12V DC) Max. 12.95W (PoE)	TBD (PoE)	TBD (PoE)
Dimensions (WxHxD) / Weight	Ø160.0 x 118.5mm (Ø6.30" x 4.67") 995g (2.19 lb)	Ø162 x 120.5mm (Ø6.38" x 4.74") TBD	Ø160.0 x 118.5mm (Ø6.30" x 4.67") 985g (2.17 lb)	Ø160.0 x 118.5mm (Ø6.30" x 4.67") 995g (2.19 lb)
Additional Features	Handover, WiseStream II, Advanced video analytics, Sound classification (Explosion, Gunshot, Glass breakage, Scream etc), Hallway View	Handover, WiseStream II, Advanced video analytics, Sound classification (Explosion, Gunshot, Glass breakage, Scream etc), Hallway View, SUS316L	WiseStream II, Lens distortion correction, Defog, Hallway View	WiseStream II, Lens distortion correction, Defog, Hallway View

	2MP	2MP	2MP	2MP
Resolution	2MP	2MP	2MP	2MP
Imaging Device	1/2.8" 2M CMOS	1/2.8" 2M CMOS	1/2.8" 2M CMOS	1/2.8" 2M CMOS
Video Compression Format	H.265, H.264, MJPEG	H.265, H.264, MJPEG	H.265, H.264, MJPEG	H.265, H.264, MJPEG
Resolution / Max. Frame Rate	2M / 60fps	2M / 60fps	2M / 60fps	2M / 60fps
Streaming Capacity	Multiple (Up to 10 Profiles)	Multiple (Up to 10 Profiles)	Multiple (Up to 10 Profiles)	Multiple (Up to 10 Profiles)
Max. User Access	20 (Unicast)	20 (Unicast)	20 (Unicast)	20 (Unicast)
Min. Illumination	Color: 0.055Lux B/W: 0Lux (IR LED on)	Color: 0.055Lux B/W: 0Lux (IR LED on)	Color: 0.015Lux B/W: 0Lux (IR LED on)	Color: 0.055Lux B/W: 0.0055Lux
Video Output	Micro USB type B	Micro USB type B	CVBS 1.0Vpp, Micro USB type B	Micro USB type B
Lens	3.6mm fixed (F2.0)	3.6mm fixed (F2.0)	4mm fixed (F1.4)	2.8mm fixed (F2.0)
Angular Field of View	H: 96.4° / V: 50.5° / D: 116°	H: 96.4° / V: 50.5° / D: 116°	H: 88.6° / V: 47.5° / D: 104.8°	H: 110.2° / V: 62.7° / D: 125.4°
Focus Control	Manual	Manual	Manual	Manual
IR Viewable Length	15m (49.21ft)	15m (49.21ft)	30m (98.43ft)	-
Pan / Tilt / Rotate	±5° / 0° ~ 67° / ±90°	±5° / 0° ~ 67° / ±90°	0° ~ 354° / 0° ~ 67° / 0° ~ 355°	±5° / 12° / ±90°
Day & Night	True (ICR)	True (ICR)	True (ICR)	True (ICR)
Backlight Compensation	WDR (150dB)	WDR (150dB)	WDR (150dB)	WDR (150dB)
Digital Noise Reduction	SSNRV (2D+3D Noise filter)	SSNRV (2D+3D Noise filter)	SSNRV (2D+3D Noise filter)	SSNRV (2D+3D Noise filter)
Digital Image Stabilization	Support	Support	Support	Support
Video & Audio Analytics	Tampering, Loitering, Directional detection, Defocus detection, Fog detection, Virtual line, Enter/Exit, (Dis)Appear, Audio detection, Motion detection, Face detection, Digital auto tracking, Sound classification	Tampering, Loitering, Directional detection, Defocus detection, Fog detection, Virtual line, Enter/Exit, (Dis)Appear, Audio detection, Motion detection, Face detection, Digital auto tracking, Sound classification	Tampering, Loitering, Directional detection, Defocus detection, Fog detection, Virtual line, Enter/Exit, (Dis)Appear, Audio detection, Motion detection, Face detection, Digital auto tracking, Sound classification, Heatmap, People counting, Queue management	Tampering, Loitering, Directional detection, Defocus detection, Fog detection, Virtual line, Enter/Exit, (Dis)Appear, Audio detection, Motion detection, Face detection, Digital auto tracking, Sound classification
Protocol	ONVIF Profile S & G, SUNAPI	ONVIF Profile S & G, SUNAPI	ONVIF profile S/G, SUNAPI	ONVIF profile S/G, SUNAPI
Alarm I/O	-	-	1 / 1	-
Audio	Bi-Directional	Bi-Directional	Bi-Directional	Bi-Directional
Edge Storage	SD/SDHC/SDXC, NAS, Local PC	SD/SDHC/SDXC, NAS, Local PC	SD/SDHC/SDXC, NAS, Local PC	SD/SDHC/SDXC, NAS, Local PC
Environment Protection	IP66, NEMA 4X, IK10	IP66, NEMA 4X, IK10	IP67, IP66, IK10	IP67, IK10, NEMA4X, IP6K9K
Operating Temperature	-30°C ~ +55°C (-22°F ~ +131°F) * Start up above -20°C (-4°F)	-30°C ~ +55°C (-22°F ~ +131°F) * Start up above -20°C (-4°F)	-30°C ~ +55°C (-22°F ~ +131°F) * Start up above -20°C (-4°F)	-40°C ~ +60°C (-40°F ~ +140°F) * Start up above -30°C (-22°F)
Power	TBD (PoE)	TBD (PoE)	Max. 8W (12V DC) Max. 9W (PoE)	TBD (PoE)
Dimensions (WxHxD) / Weight	99.0 x 52.0 x 100.0mm (3.9" x 2.05" x 3.94") TBD	99.0 x 52.0 x 100.0mm (3.9" x 2.05" x 3.94") TBD	Ø120.0 x 97.5mm (Ø4.72" x 3.84") 615g (1.36 lb)	105 x 74 x 128mm (4.13" x 2.91" x 5.04") (TBD)
Additional Features	Handover, WiseStream II, Advanced video analytics, Sound classification (Explosion, Gunshot, Glass breakage, Scream etc), Hallway View	Handover, WiseStream II, Advanced video analytics, Sound classification (Explosion, Gunshot, Glass breakage, Scream etc), Hallway View, M12 Connector	Handover, WiseStream II, Advanced video analytics, Sound classification (Explosion, Gunshot, Glass breakage, Scream etc), Hallway View	Handover, WiseStream II, Advanced video analytics, Sound classification (Explosion, Gunshot, Glass breakage, Scream etc), Hallway View, M12 Connector

# Product comparison



Wisenet X  
XNV-6012M/6012



Wisenet X  
XNV-6011



Wisenet X  
XNV-6010



Wisenet X  
XNP-6370RH

	2MP	2MP	2MP	2MP
Resolution	2MP	2MP	2MP	2MP
Imaging Device	1/2.8" 2M CMOS	1/2.8" 2M CMOS	1/2.8" 2M CMOS	1/1.9" 2M CMOS
Video Compression Format	H.265, H.264, MJPEG	H.265, H.264, MJPEG	H.265, H.264, MJPEG	H.265, H.264, MJPEG
Resolution / Max. Frame Rate	2M / 60fps	2M / 60fps	2M / 60fps	2M / 60fps
Streaming Capacity	Multiple (Up to 10 Profiles)	Multiple (Up to 10 Profiles)	Multiple (Up to 10 Profiles)	Multiple (Up to 10 Profiles)
Max. User Access	20 (Unicast)	20 (Unicast)	20 (Unicast)	15 (Unicast)
Min. Illumination	Color : 0.055Lux B/W : 0.0055Lux	Color : 0.055Lux B/W : 0.055Lux	Color : 0.055Lux B/W : 0.0055Lux	Color : 0.05Lux B/W : 0Lux (IR LED on)
Video Output	Micro USB type B	CVBS 1.0Vpp, Micro USB type B	CVBS 1.0Vpp, Micro USB type B	CVBS 1.0Vpp
Lens	2.4mm fixed (F2.0)	2.8mm fixed (F2.0)	2.4mm fixed (F2.0)	6 ~ 222mm (IR Corrected Optical 37x) F1.5(Wide) / F4.6(Tele)
Angular Field of View	H : 139° / V : 73° / D : 167°	H : 112° / V : 62° / D : 130°	H : 139.0° / V : 73.0° / D : 167.0°	H : 59.3°(Wide) ~ 1.9°(Tele) / V : 35.8°(Wide) ~ 1.1°(Tele)
Focus Control	Manual	Manual	Manual	AF / One-shot AF / Manual
IR Viewable Length	-	-	-	350m (1,148.29ft)
Pan / Tilt / Rotate	±5° / 0 ~ 67° / ±90°	0° ~ 353° / 0° ~ 59° / 0° ~ 353°	0° ~ 354° / 0° ~ 67° / 0° ~ 355°	360° Endless / 190° (-5° ~ 185°) / -
Day & Night	True (ICR)	Auto (Electrical)	True (ICR)	True (ICR)
Backlight Compensation	WDR (150dB)	WDR (150dB)	WDR (150dB)	WDR (120dB)
Digital Noise Reduction	SSNRV (2D+3D Noise filter)	SSNRV (2D+3D Noise filter)	SSNRV (2D+3D Noise filter)	SSNRV (2D+3D Noise filter)
Digital Image Stabilization	Support	Support	Support	Support (Built in Gyro sensor)
Video & Audio Analytics	Tampering, Loitering, Directional detection, Defocus detection, Fog detection, Virtual line, Enter/Exit, (Dis)Appear, Audio detection, Motion detection, Face detection, Digital auto tracking, Sound classification	Tampering, Loitering, Directional detection, Defocus detection, Fog detection, Virtual line, Enter/Exit, (Dis)Appear, Face detection, Motion detection, Digital auto tracking, People counting, Queue management	Tampering, Loitering, Directional detection, Defocus detection, Fog detection, Virtual line, Enter/Exit, (Dis)Appear, Audio detection, Motion detection, Face detection, Digital auto tracking, Sound classification, Heatmap, People counting, Queue management	Tampering, Crossing, Enter/Exit, (Dis)Appear, Audio detection
Protocol	ONVIF profile S/G, SUNAPI	ONVIF profile S/G, SUNAPI	ONVIF profile S/G, SUNAPI	ONVIF profile S/G, SUNAPI
Alarm I/O	-	-	1 / 1	4 / 2 (Relay)
Audio	Bi-directional	-	Bi-Directional	Bi-Directional
Edge Storage	SD/SDHC/SDXC, NAS, Local PC	SD/SDHC/SDXC, NAS, Local PC	SD/SDHC/SDXC, NAS, Local PC	SD/SDHC/SDXC, NAS, Local PC
Environment Protection	IP66, IK10, NEMA4X	IP66, IK10, NEMA4X	IP67, IP66, NEMA 4X, IK10	IP66, IK10
Operating Temperature	-30°C ~ +55°C (-22°F ~ +131°F) * Start up above -20°C (-4°F)	-30°C ~ +55°C (-22°F ~ +131°F) * Start up above -20°C (-4°F)	-30°C ~ +55°C (-22°F ~ +131°F) * Start up above -20°C (-4°F)	-50°C ~ +55°C (-58°F ~ +131°F)
Power	TBD (PoE)	Max. 6.5W (PoE)	Max. 5.5W (12V DC) Max. 6W (PoE)	Max. 60.0W / 90.0W - Heater off / on, IR on (24V AC)
Dimensions (WxHxD) / Weight	99.0 x 52.0 x 100.0mm (3.9" x 2.05" x 3.94") (TBD)	Ø112.8 x 63.7mm (Ø4.44" x 2.51") 420g (0.93 lb)	Ø120.0 x 97.5mm (Ø4.72" x 3.84") 625g (1.38 lb)	Ø236.9 x 407.7mm (Ø9.33" x 16.05") 7.1kg (15.65 lb)
Additional Features	Handover, WiseStream II, Advanced video analytics, Sound classification, (Explosion, Gunshot, Glass breakage, Scream etc), Hallway View, M12 Connector (XNV-6012M)	Handover, WiseStream II, Advanced video analytics, Hallway View	Handover, WiseStream II, Advanced video analytics, Sound classification (Explosion, Gunshot, Glass breakage, Scream etc), Hallway View	Defog, WiseStream, Auto tracking



Wisenet X  
XNP-6320H



Wisenet X  
XNP-6320



Wisenet X  
XNP-6320HS



Wisenet X  
XNP-6120H



Wisenet X  
XNP-6040H

	2MP	2MP	2MP	2MP	2MP
Resolution	2MP	2MP	2MP	2MP	2MP
Imaging Device	1/2.8" 2.4M CMOS	1/2.8" 2.4M CMOS	1/2.8" 2.4M CMOS	1/2.8" 2M CMOS	1/2.8" 2M CMOS
Video Compression Format	H.265, H.264, MJPEG	H.265, H.264, MJPEG	H.265, H.264, MJPEG	H.265, H.264, MJPEG	H.265, H.264, MJPEG
Resolution / Max. Frame Rate	2M / 60fps	2M / 60fps	2M / 60fps	2M / 60fps	2M / 60fps
Streaming Capacity	Multiple (Up to 10 Profiles)	Multiple (Up to 10 Profiles)	Multiple (Up to 10 Profiles)	Multiple (Up to 10 Profiles)	Multiple (Up to 10 Profiles)
Max. User Access	20 (Unicast)	20 (Unicast)	20 (Unicast)	20 (Unicast)	20 (Unicast)
Min. Illumination	Color : 0.05Lux B/W : 0.005Lux	Color : 0.05Lux B/W : 0.005Lux	Color : 0.05Lux B/W : 0.005Lux	Color : 0.03Lux B/W : 0.003Lux	Color : 0.015Lux B/W : 0.0015Lux
Video Output	CVBS 1.0Vpp, Micro USB type B	CVBS 1.0Vpp, Micro USB type B	CVBS 1.0Vpp, Micro USB type B	CVBS 1.0Vpp, Micro USB type B	CVBS 1.0Vpp, Micro USB type B
Lens	4.44 ~ 142.6mm (Optical 32x) F1.6 (Wide) / F4.4 (Tele)	4.44 ~ 142.6mm (Optical 32x) F1.6 (Wide) / F4.4 (Tele)	4.44 ~ 142.6mm (Optical 32x) F1.6 (Wide) / F4.4 (Tele)	5.2 ~ 62.4mm (Optical 12x) F1.6(Wide) / F3.0(Tele)	2.8 ~ 12mm (Optical 4.3x) (F1.4)
Angular Field of View	H : 61.8°(Wide) ~ 2.19°(Tele) / V : 36.2°(Wide) ~ 1.24°(Tele)	H : 61.8°(Wide) ~ 2.19°(Tele) / V : 36.2°(Wide) ~ 1.24°(Tele)	H : 61.8°(Wide) ~ 2.19°(Tele) / V : 36.2°(Wide) ~ 1.24°(Tele)	H : 54.58°(Wide) ~ 5.30°(Tele) / V : 32.19°(Wide) ~ 3.00°(Tele)	H : 119.5°(Wide) ~ 27.9°(Tele) / V : 62.8°(Wide) ~ 15.7°(Tele) / D : 142.1°(Wide) ~ 32.0°(Tele)
Focus Control	Auto / Manual / One shot AF	Auto / Manual / One shot AF	Auto / Manual / One shot AF	Auto / Manual / One shot AF	Auto / Manual / One shot AF
IR Viewable Length	-	-	-	-	-
Pan / Tilt / Rotate	360° Endless / 210° (-15° ~ 195°)	360° Endless / 210° (-15° ~ 195°)	360° Endless / 210° (-15° ~ 195°)	360° Endless / 190° (-5° ~ 185°)	0° ~ 355° / 0° ~ 90°
Day & Night	True (ICR)	True (ICR)	True (ICR)	True (ICR)	True (ICR)
Backlight Compensation	WDR (150dB)	WDR (150dB)	WDR (150dB)	WDR (150dB)	WDR (150dB)
Digital Noise Reduction	SSNRV (2D+3D Noise filter)	SSNRV (2D+3D Noise filter)	SSNRV (2D+3D Noise filter)	SSNRV (2D+3D Noise filter)	SSNRV (2D+3D Noise filter)
Digital Image Stabilization	Support (Built in Gyro sensor)	Support (Built in Gyro sensor)	Support (Built in Gyro sensor)	Support (Built in Gyro sensor)	Support (Built in Gyro sensor)
Video & Audio Analytics	Tampering, Loitering, Directional detection, Fog detection, Virtual line, Enter/Exit, (Dis)Appear, Audio detection, Motion detection, Sound classification	Tampering, Loitering, Directional detection, Fog detection, Virtual line, Enter/Exit, (Dis)Appear, Audio detection, Motion detection, Sound classification	Tampering, Loitering, Directional detection, Fog detection, Virtual line, Enter/Exit, (Dis)Appear, Audio detection, Motion detection, Sound classification	Tampering, Loitering, Directional detection, Fog detection, Virtual line, Enter/Exit, (Dis)Appear, Audio detection, Motion detection, Sound classification	Tampering, Loitering, Directional detection, Defocus detection, Fog detection, Virtual line, Enter/Exit, (Dis)Appear, Audio detection, Face detection, Motion detection, Digital Auto Tracking, Sound classification
Protocol	ONVIF profile S/G, SUNAPI	ONVIF profile S/G, SUNAPI	ONVIF profile S/G, SUNAPI	ONVIF profile S/G, SUNAPI	ONVIF profile S/G, SUNAPI
Alarm I/O	4 / 2 (Relay)	4 / 2 (Relay)	4 / 2 (Relay)	1 / 1	1 / 1
Audio	Bi-Directional	Bi-Directional	Bi-Directional	Bi-Directional	Bi-Directional
Edge Storage	SD/SDHC/SDXC, NAS, Local PC	SD/SDHC/SDXC, NAS, Local PC	SD/SDHC/SDXC, NAS, Local PC	SD/SDHC/SDXC, NAS, Local PC	SD/SDHC/SDXC, NAS, Local PC
Environment Protection	IP66, IK10	IK10 (with SHP-3701H)	IP67, IP66, NEMA4X, IK10	IP66, IK10	IP66, IK10
Operating Temperature	-50°C ~ +55°C (-58°F ~ +131°F) (24V AC) -35°C ~ +55°C (-31°F ~ +131°F) (PoE+) * Start up above -30°C (-22°F)	-10°C ~ +55°C (+14°F ~ +131°F)	-50°C ~ +55°C (-58°F ~ +131°F) (24V AC) * Start up above -40°C (-40°F) -35°C ~ +55°C (-31°F ~ +131°F) (PoE+) * Start up above -25°C (-13°F)	-30°C ~ +55°C (-22°F ~ +131°F)	-30°C ~ +55°C (-22°F ~ +131°F)
Power	Max. 24.0W - Heater off (24V AC, PoE+) Max. 65.0W - Heater on (24V AC)	Max. 20.0W (24V AC, PoE+)	Max. 24.0W - Heater off (24V AC, PoE+) Max. 65.0W - Heater on (24V AC)	Max. 12W (12V DC, PoE)	Max. 8.6W (12V DC) Max. 9.6W (PoE)
Dimensions (WxHxD) / Weight	Ø220.0 x 293.6mm (Ø8.66" x 11.56") 3.3kg (7.28 lb)	Ø152.0 x 218.0mm (Ø5.98" x 8.58") 2.2kg (4.85 lb)	Ø227 x 296mm (Ø8.94" x 11.65") TBD	Ø168.0 x 161.5mm (Ø6.61" x 6.36") 1.9kg (4.19 lb)	Ø136.1 x 106.1mm (Ø5.36" x 4.18") 0.78 kg (1.72 lb)
Additional Features	WiseStream II, Advanced video analytics, Auto Tracking, Sound classification (Explosion, Gunshot, Glass breakage, Scream etc)	WiseStream II, Advanced video analytics, Auto Tracking, Sound classification (Explosion, Gunshot, Glass breakage, Scream etc)	WiseStream II, Advanced video analytics, Auto Tracking, Sound classification (Explosion, Gunshot, Glass breakage, Scream etc), SU5316L	WiseStream II, Advanced video analytics, Auto Tracking, Sound classification (Explosion, Gunshot, Glass breakage, Scream etc)	WiseStream II, Advanced video analytics, Auto Tracking, Sound classification (Explosion, Gunshot, Glass breakage, Scream etc)