

# TEAM nISCA

Plastic Card Printers



# Reliable, affordable, high quality output plastic card printers. Secure identity solutions for all markets and applications.



## Corporations/Organizations

- Employee badges
- Visitor management
- Access control
- Time attendance
- Business cards



## Education

- K-12 school ID cards
- College & university student ID cards
- Photo IDs for faculty and staff
- School visitor badges
- Bookstore, cafeteria & media transactions



## Government

- Driver's license
- Credentials for employees, officials, military, visitors
- National ID cards
- National healthcare
- Voter, first responder & law enforcement IDs

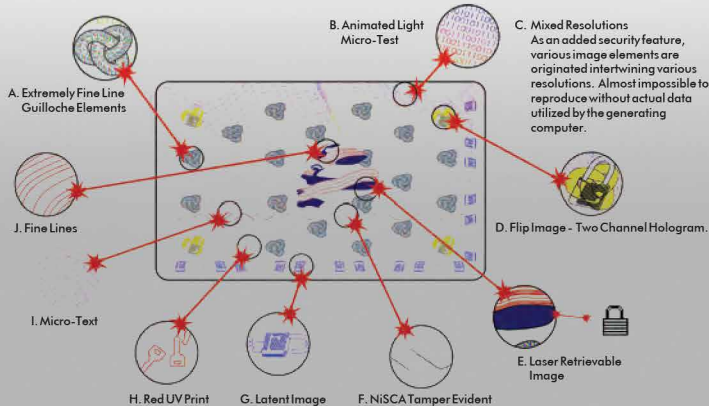


## Other Applications

- Loyalty cards
- Membership cards
- Hospital employee badges
- Transit passes
- Event badges



# The More Security Features, the Less Counterfeiting.



## PR-C101 Quality and Reliability in a Single-Sided, Entry Level Printer

- ✓ 24-bit Color
- ✓ Removable Card Hopper
- ✓ High Durability, Low Maintenance,
- ✓ 50,000 Cards Mean Time Between Failure (MTBF)
- ✓ Compact and Light Weight
- ✓ Rotating LCD Panel



# Smart Printers. Affordable Solutions.



## PR-C151 Dual-Sided, Direct-to-Card Printer with Laminator Option

- ✓ 24-bit Color
- ✓ Dual Sided Printing
- ✓ Built-in Ethernet Interface
- ✓ 100,000 Mean Time Between Failure (MTBF)
- ✓ Supports Magnetic & Contactless Encoding
- ✓ Optional Laminator Available

# A Printer that Meets Your Needs.

## **PR-C201** Retransfer Printer, Over-the-Edge Printing, Full Bleed

- ✓ 24-bit Color
- ✓ 600 DPI
- ✓ High Durability, Low Maintenance
- ✓ Built-in Ethernet Interface
- ✓ 100,000 Cards Mean Time Between Failure (MTBF)
- ✓ Supports Magnetic, Contactless & IC Contact Encoding
- ✓ Optional Laminator Available



| PRODUCT SPECIFICATIONS   | PR-C101             | PR-C151                   | PR-C201                                     |
|--|---------------------|---------------------------|---|
| DPI  | 300                 | 300                       | 600   |
| 24-bit continuous tone printing                                  | Yes                 | Yes                       | Yes   |
| Dual-sided printing  | No                  | Yes                       | Yes   |
| Inline encoding options  | MIFARE, Desfire     | Magnetic & Contactless    | Magnetic, Contactless & IC Contact Encoding |
| Separate image and function memory                               | Yes                 | Yes                       | Yes   |
| Extended image memory, MB  | Yes, 8              | Yes, 32                   | Yes, 64                                     |
| Printing speed YMCKO <sup>1</sup> , cards/hour                   | 150                 | 144                       | 145   |
| Printing speed resin, cards/hour                                 | 643                 | 600                       |   |
| Printing speed single-sided w/ lamination, cards/hour            | N/A                 | 144                       | 160   |
| Printing speed double-sided w/ lamination, cards/hour            | N/A                 | 60                        | 100   |
| Ultraviolet printing capability                                  | No                  | Yes                       | Yes   |
| Micro printing capability  | Yes                 | Yes                       | Yes   |
| Built in Ethernet interface                                      | No                  | Yes                       | Yes   |
| Card size  | CR80                | CR80                      | CR79 & CR80                                 |
| Card thickness, mil  | 30, 10 <sup>2</sup> | 20 to 50, 10 <sup>2</sup> | 20 to 50                                    |
| Card input/output hopper   | 100/30              | 100/100                   | 250/250                                     |
| Windows 2000/XP/VISTA/7/8 32 or 64 bit<br>Mac OSX 10.5 and above | Yes <sup>3</sup>    | Yes <sup>5</sup>          | Yes <sup>5</sup>                            |
| Security overlaminate add-on module                              | No                  | Yes PR-L151               | Yes PR-L201                                 |

<sup>1</sup> Due to policy of continuous development, we reserve the right to alter details of specification and equipment without notice.

<sup>2</sup> Optional 10 mil kit available (PR5600-THN)

<sup>3</sup> Mac driver must be purchased from DVR Consulting, Inc. for PR-C101 ([www.badges.com](http://www.badges.com)).

<sup>4</sup> Please contact Team NiSCA for more information.

<sup>5</sup> Not compatible with Windows 2000.

